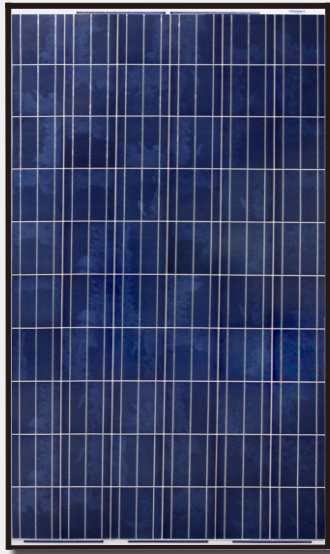


CS6P

235/240/245/250/255P



CS6P is a robust solar module with 60 solar cells. These modules can be used for on-grid solar applications. Our meticulous design and production techniques ensure a high-yield, long-term performance for every module produced. Our rigorous quality control and in-house testing facilities guarantee Canadian Solar's modules meet the highest quality standards possible.

Best Quality

- 235 quality control points in module production
- EL screening to eliminate product defects
- Current binning to improve system performance
- Potential-Induced Degradation (PID) free
- Accredited Salt mist/Ammonia resistant
- Top performance by PVUSA Test Conditions (PTC) rating

Best Warranty Insurance

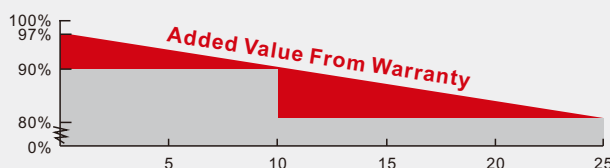
- 25 years worldwide coverage
- 100% warranty term coverage
- Providing third party bankruptcy rights
- Non-cancellable
- Immediate coverage
- Insured by 3 world top insurance companies

Comprehensive Certificates

- IEC 61215, IEC 61730, IEC61701 ED2, UL1703, IEC62716, KEMCO, CEC Listed, CE, JET and MCS
- ISO9001: 2008: Quality Management System
- ISO/TS16949:2009: The automotive quality management system
- ISO14001:2004: Standards for Environmental management system
- QC080000 HSPM: The Certification for Hazardous Substances Regulations
- OHSAS 18001:2007 International standards for occupational health and safety
- REACH Compliance

Key Features

- High module efficiency up to 15.85%
- Positive power tolerance: 0 ~ +5W
- Robust frame to up to 5400 Pa load
- Anti-reflective with self-cleaning surface
- Outstanding performance at low irradiance
- High energy yield at Low NOCT
- **Backed By Our New 10/25 Linear Power Warranty Plus our added 25 year insurance coverage**



- 10 year product warranty on materials and workmanship
- 25 year linear power output warranty

CS6P-235/240/245/250/255P

Electrical Data

STC	CS6P-235P	CS6P-240P	CS6P-245P	CS6P-250P	CS6P-255P
Nominal Maximum Power (Pmax)	235W	240W	245W	250W	255W
Optimum Operating Voltage (Vmp)	29.8V	29.9V	30.0V	30.1V	30.2V
Optimum Operating Current (Imp)	7.90A	8.03A	8.17A	8.30A	8.30A
Open Circuit Voltage (Voc)	36.9V	37.0V	37.1V	37.2V	37.4V
Short Circuit Current (Isc)	8.46A	8.59A	8.74A	8.87A	9.00A
Module Efficiency	14.61%	14.92%	15.23%	15.54%	15.85%
Operating Temperature	-40°C~+85°C				
Maximum System Voltage	1000V (IEC)/600V (UL)				
Maximum Series Fuse Rating	15A				
Application Classification	Class A				
Power Tolerance	0 ~ +5W				

Under Standard Test Conditions (STC) of irradiance of 1000W/m², spectrum AM 1.5 and cell temperature of 25°C

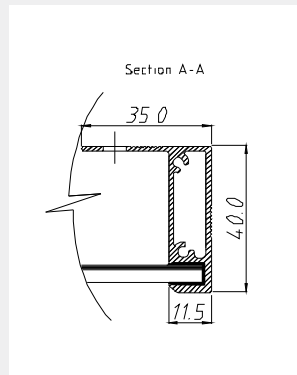
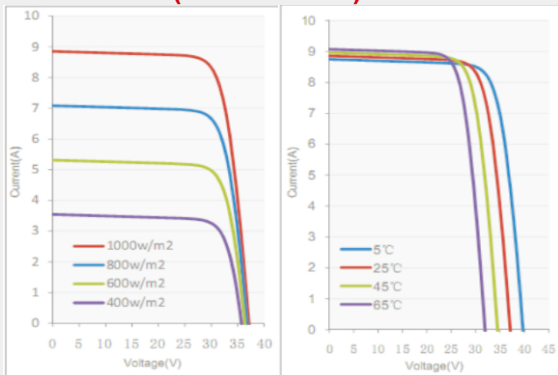
NOCT	CS6P-235P	CS6P-240P	CS6P-245P	CS6P-250P	CS6P-255P
Nominal Maximum Power (Pmax)	170W	174W	178W	181W	185W
Optimum Operating Voltage (Vmp)	27.2V	27.3V	27.4V	27.5V	27.5V
Optimum Operating Current (Imp)	6.27A	6.38A	6.49A	6.60A	6.71A
Open Circuit Voltage (Voc)	33.9V	34.0V	34.1V	34.2V	34.4V
Short Circuit Current (Isc)	6.86A	6.96A	7.08A	7.19A	7.29A

Under Normal Operating Cell Temperature, Irradiance of 800 W/m², spectrum AM 1.5, ambient temperature 20°C, wind speed 1 m/s

Mechanical Data

Cell Type	Poly-crystalline 156 x 156mm, 2 or 3 Busbars
Cell Arrangement	60 (6 x 10)
Dimensions	1638 x 982 x 40mm (64.5 x 38.7 x 1.57in)
Weight	19kg (41.9 lbs)
Front Cover	3.2mm Tempered glass
Frame Material	Anodized aluminium alloy
J-BOX	IP65, 3 diodes
Cable	4mm ² (IEC)/12AWG(UL), 1000mm
Connectors	MC4 or MC4 Comparable
Standard Packaging (Modules per Pallet)	24pcs
Module Pieces per container (40 ft. Container)	672pcs (40'HQ)

I-V Curves (CS6P-255P)



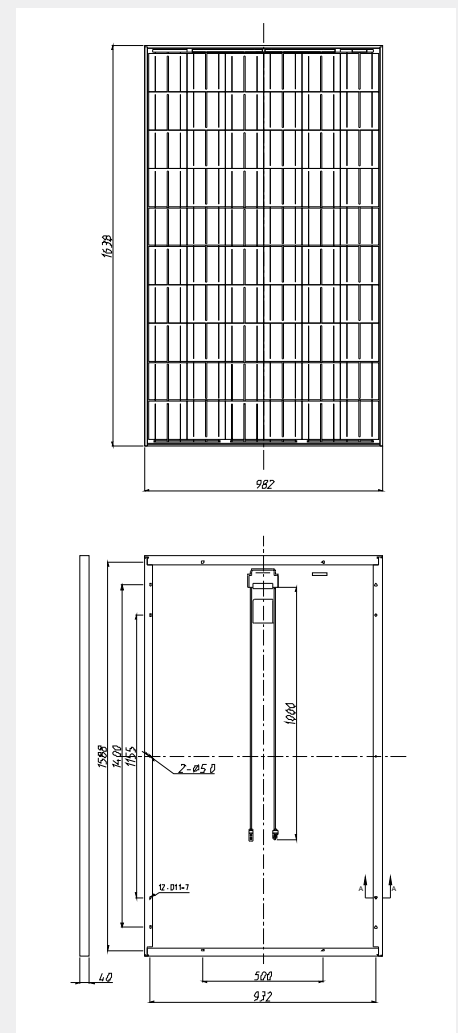
Temperature Characteristics

Temperature Coefficient	Pmax	-0.43%/°C
	Voc	-0.34%/°C
	Isc	0.065%/°C
Normal Operating Cell Temperature		45±2°C

Performance at Low Irradiance

Industry leading performance at low irradiation environment, +95.5% module efficiency from an irradiance of 1000w/m² to 200w/m² (AM 1.5, 25 °C)

Engineering Drawings



*Specifications included in this datasheet are subject to change without prior notice.

About Canadian Solar

Canadian Solar Inc. is one of the world's largest solar companies. As a leading vertically-integrated manufacturer of ingots, wafers, cells, solar modules and solar systems, Canadian Solar delivers solar power products of uncompromising quality to worldwide customers. Canadian Solar's world class team of professionals works closely with our customers to provide them with solutions for all their solar needs.

Canadian Solar was founded in Canada in 2001 and was successfully listed on NASDAQ Exchange (symbol: CSIQ) in November 2006. Canadian Solar has module manufacturing capacity of 2.05GW and cell manufacturing capacity of 1.3GW.

Headquarters | 545 Speedvale Avenue West
Guelph | Ontario N1K 1E6 | Canada
Tel: +1 519 837 1881
Fax: +1 519 837 2550
inquire.ca@canadiansolar.com
www.canadiansolar.com