

IV/F
 PORTLAND TERMINAL COMPANY
 (SEE NOTE 4a)



DESIGNER

CWS ARCHITECTS
 ARCHITECTURE | INTERIOR DESIGN
 434 CUMBERLAND AVENUE
 PORTLAND, MAINE 04101
 T: 207.774.4441
 F: 207.774.4016
 WWW.CWSARCH.COM

OWNER

COMMUNITY HOUSING
 OF MAINE INC.

ONE CITY CENTER, 4TH FLOOR
 PORTLAND, MAINE 04101

PROJECT

548 SAINT JOHN STREET
 APARTMENT

548 SAINT JOHN STREET
 PORTLAND, MAINE 04101

DRAWING

OVERALL SITEPLAN

CWS PROJECT NUMBER: 16.019

REVISIONS

03/13/2017

1 REVISION FOR (2) PARKING SPACES

DRAWING NUMBER

L1.10

SCALE:

CWS ARCHITECTS
 APPROVED SITE PLAN
 DATE: 9/08/2017

DATE OF APPROVAL

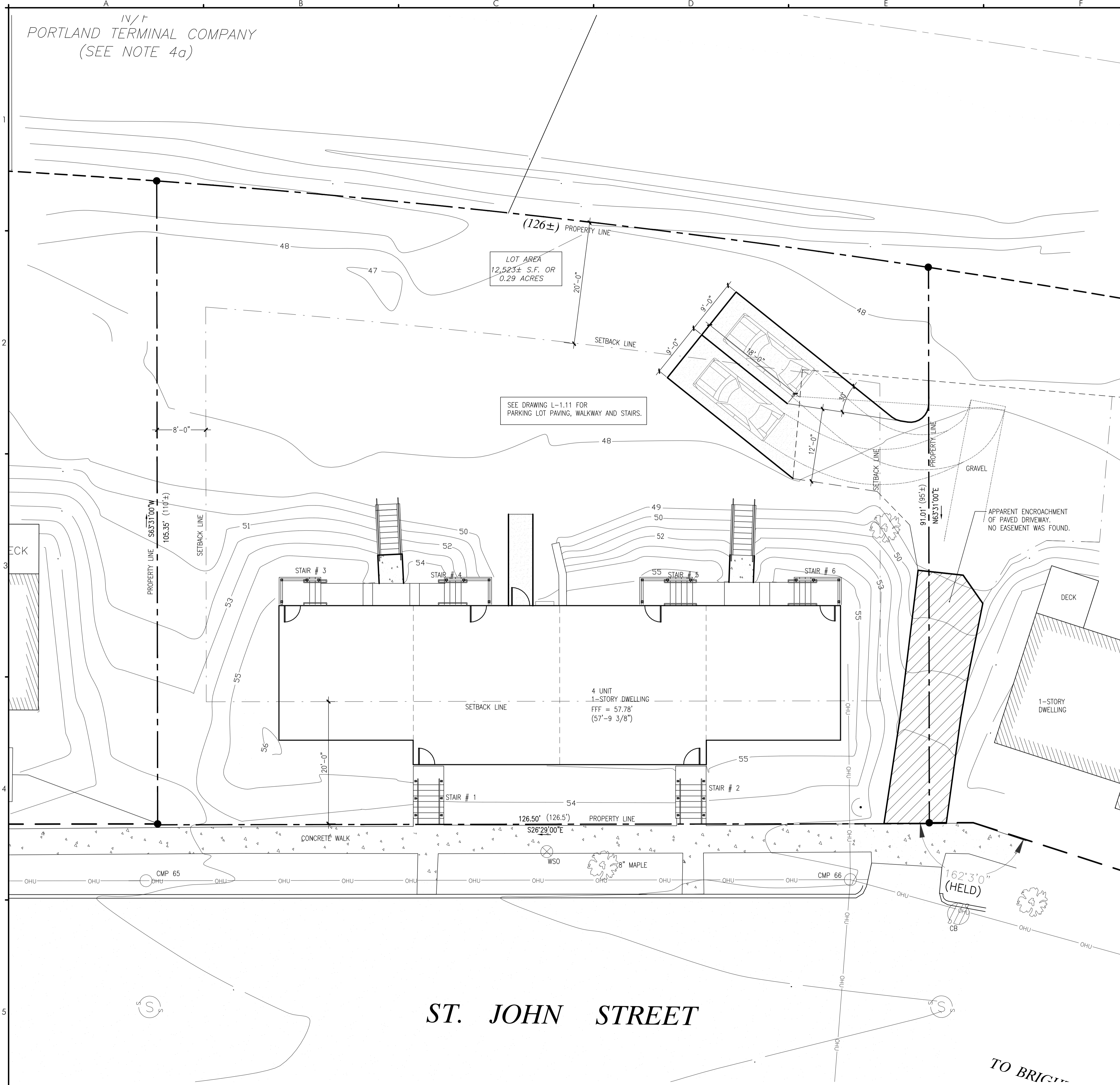
3-30-17

PLANNER

Barbara Barrydt

PROJECT NO.

#2017-068



TYPE	CONSTRUCTION	USE
PAVEMENT	<p>NEW 1 1/2" (MIN.) TO 3"(MAX) MDOT TYPE "A" GRAVEL EXISTING SUBBASE TO REMAIN</p>	PARKING LOT & ACCESS DRIVE
PAVEMENT	<p>NEW 1 1/2" (MIN.) TO 3"(MAX) MDOT TYPE "A" GRAVEL EXISTING SUBBASE TO REMAIN</p>	SIDEWALKS
WOODMULCH	<p>WOODMULCH PREPARED SUBGRADE</p>	PLANT BEDS
LOAM AND SEED	<p>PREPARED TOPSOIL, NO STONES OVER 3/4" DIA. PREPARED SUBGRADE</p>	LAWN AREA

NOTE: ALL COURSE THICKNESSES AFTER FINAL COMPACTION.

SCHEDULE OF SURFACE FINISHES NOT TO SCALE

A5 SITEPLAN

REFERENCED FROM: SCALE: 1/8" = 1'-0"

F5 SCHEDULE OF SURFACE FINISHES

REFERENCED FROM: SCALE: N.T.S.