

CWS ARCHITECTS
ARCHITECTURE | INTERIOR DESIGN
434 CUMBERLAND AVENUE
PORTLAND, MAINE 04101
T: 207.774.4441
F: 207.774.4016
WWW.CWSARCH.COM

OWNER
COMMUNITY HOUSING
OF MAINE INC.

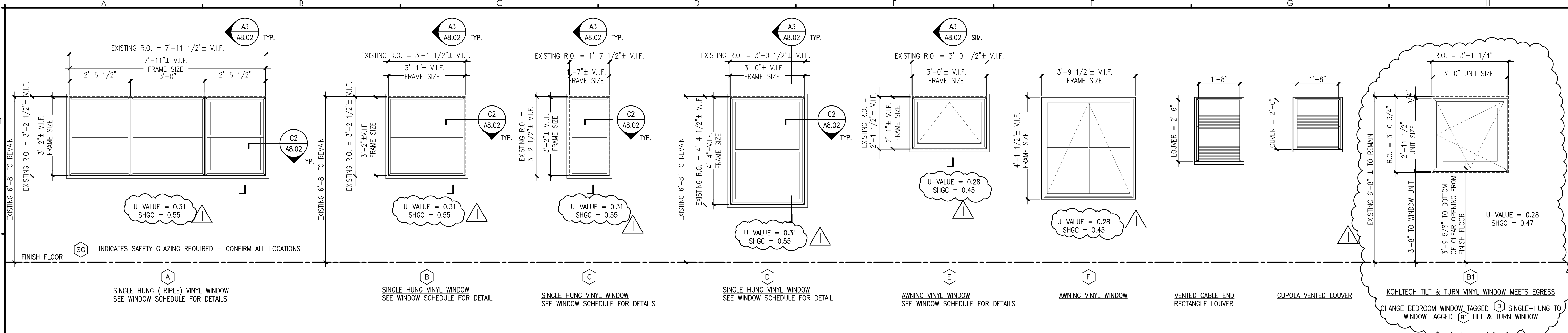
PROJECT
548 SAINT JOHN STREET
APARTMENT

DRAWING
WINDOW AND DOOR
ELEVATIONS AND DETAILS

REVISIONS	DATE	DESCRIPTION
5/02/2017		
REVISION 01		

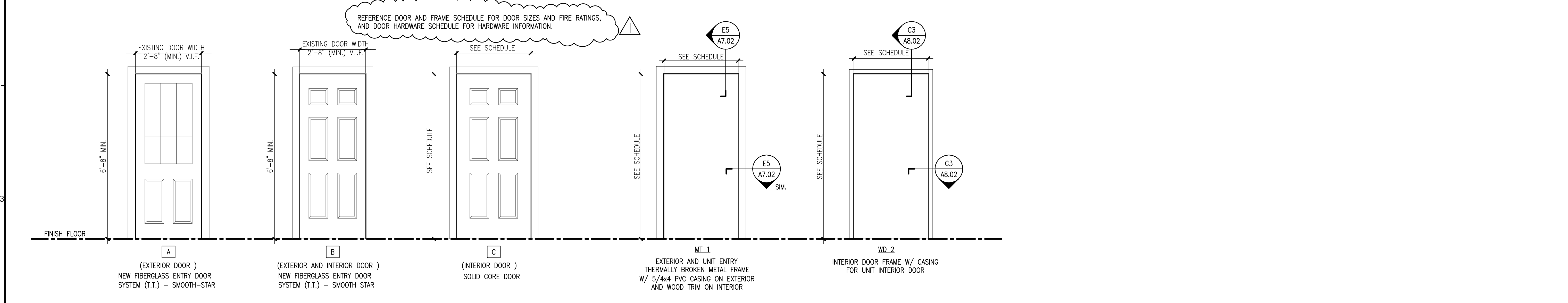
DRAWING NUMBER
A8.01

SCALE: AS NOTED
DATE: 3/08/2017



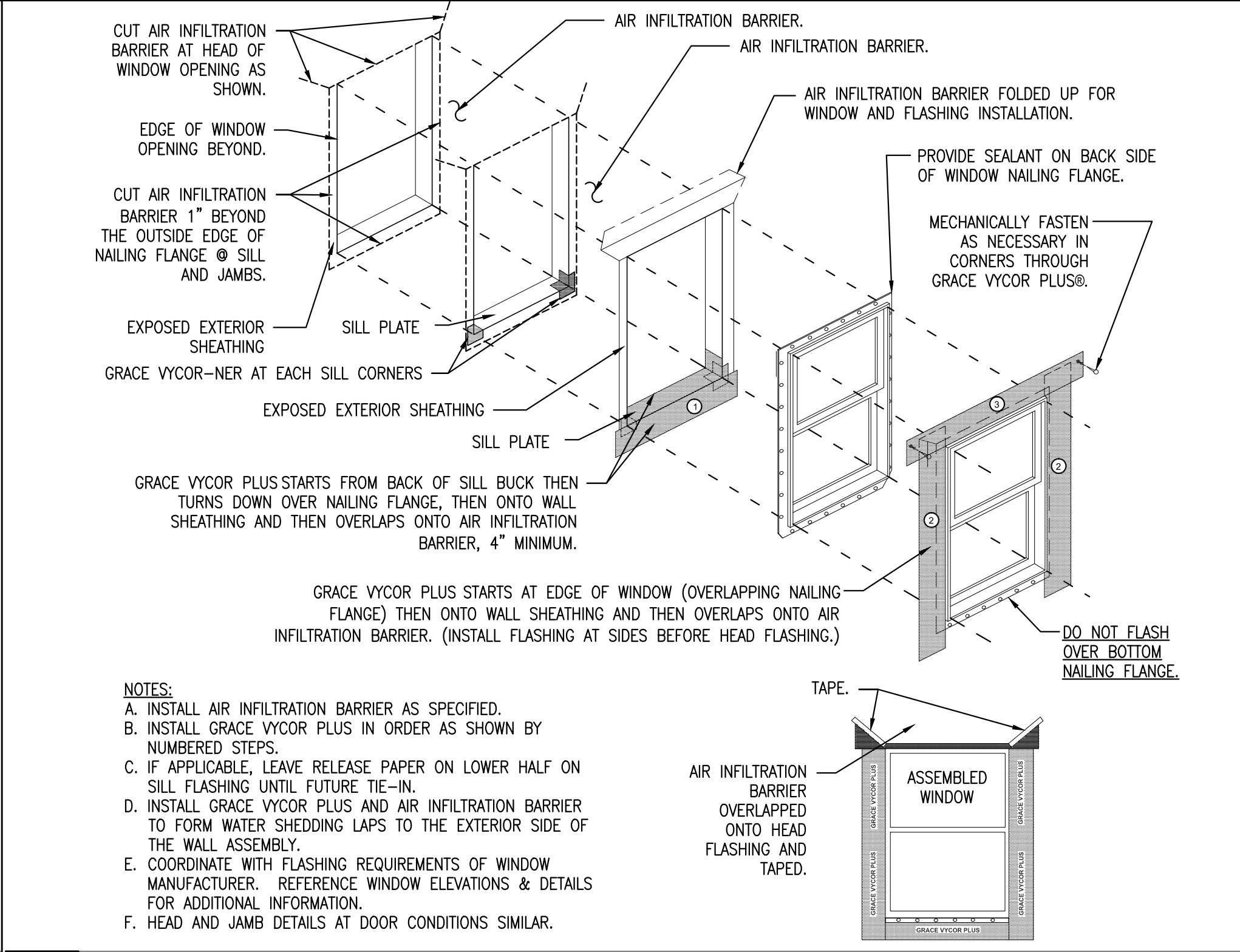
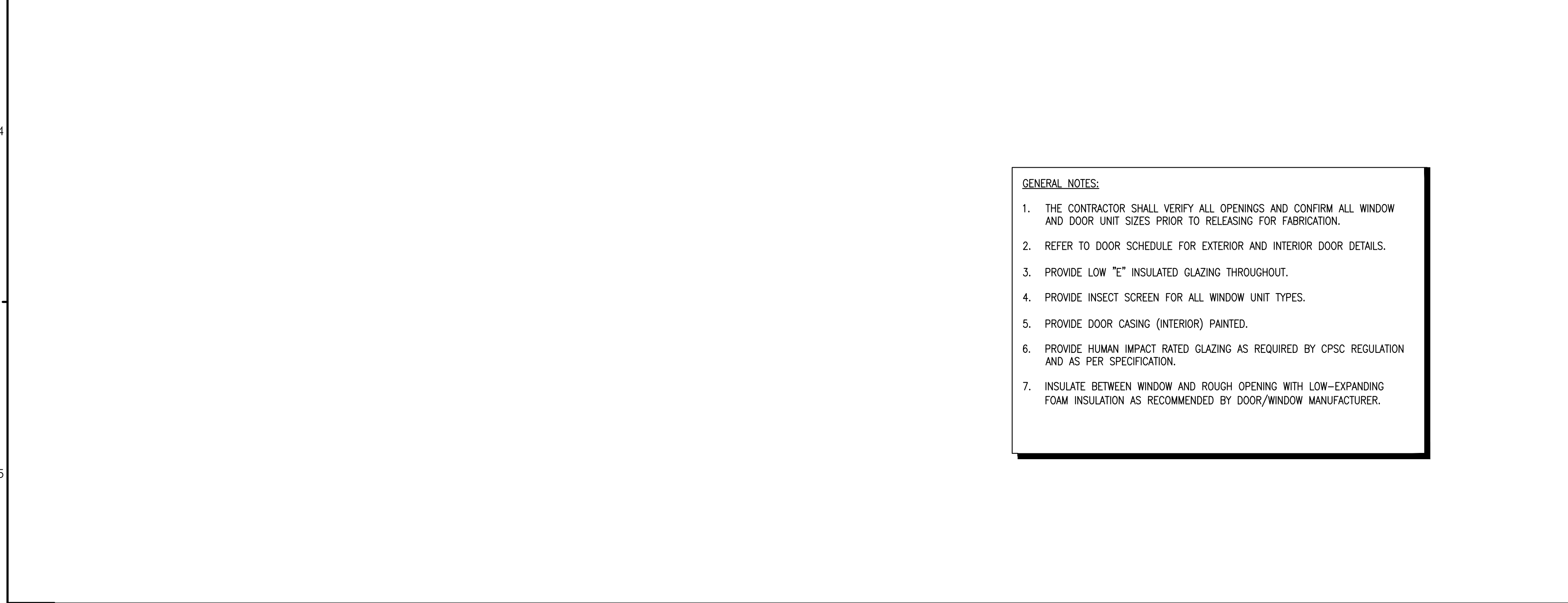
A2 WINDOW ELEVATIONS

REFERENCED FROM: SCALE: 1/2" = 1'-0"



A3 DOOR ELEVATIONS AND DOOR FRAME ELEVATIONS

REFERENCED FROM: SCALE: 1/2" = 1'-0"



E5 FLASHING DETAIL AT WINDOWS

REFERENCED FROM: SCALE: 3" = 1'-0"

A5

REFERENCED FROM: SCALE: 1/2" = 1'-0"