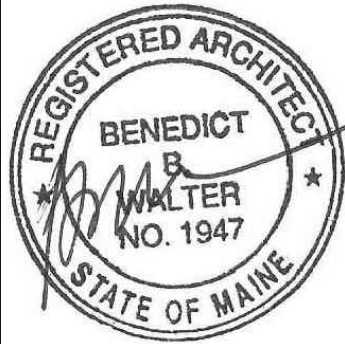


N/F
 PORTLAND TERMINAL COMPANY
 (SEE NOTE 4a)



CWS ARCHITECTS
 ARCHITECTURE | INTERIOR DESIGN
 434 CUMBERLAND AVENUE
 PORTLAND, MAINE 04101
 T: 207.774.4441
 F: 207.774.4016
 WWW.CWSARCH.COM

DESIGNER

OWNER

COMMUNITY HOUSING
 OF MAINE INC.

ONE CITY CENTER, 4TH FLOOR
 PORTLAND, MAINE 04101

PROJECT

548 SAINT JOHN STREET
 APARTMENT

548 SAINT JOHN STREET
 PORTLAND, MAINE 04101

DRAWING

OVERALL SITEPLAN

CWS PROJECT NUMBER: 16.019

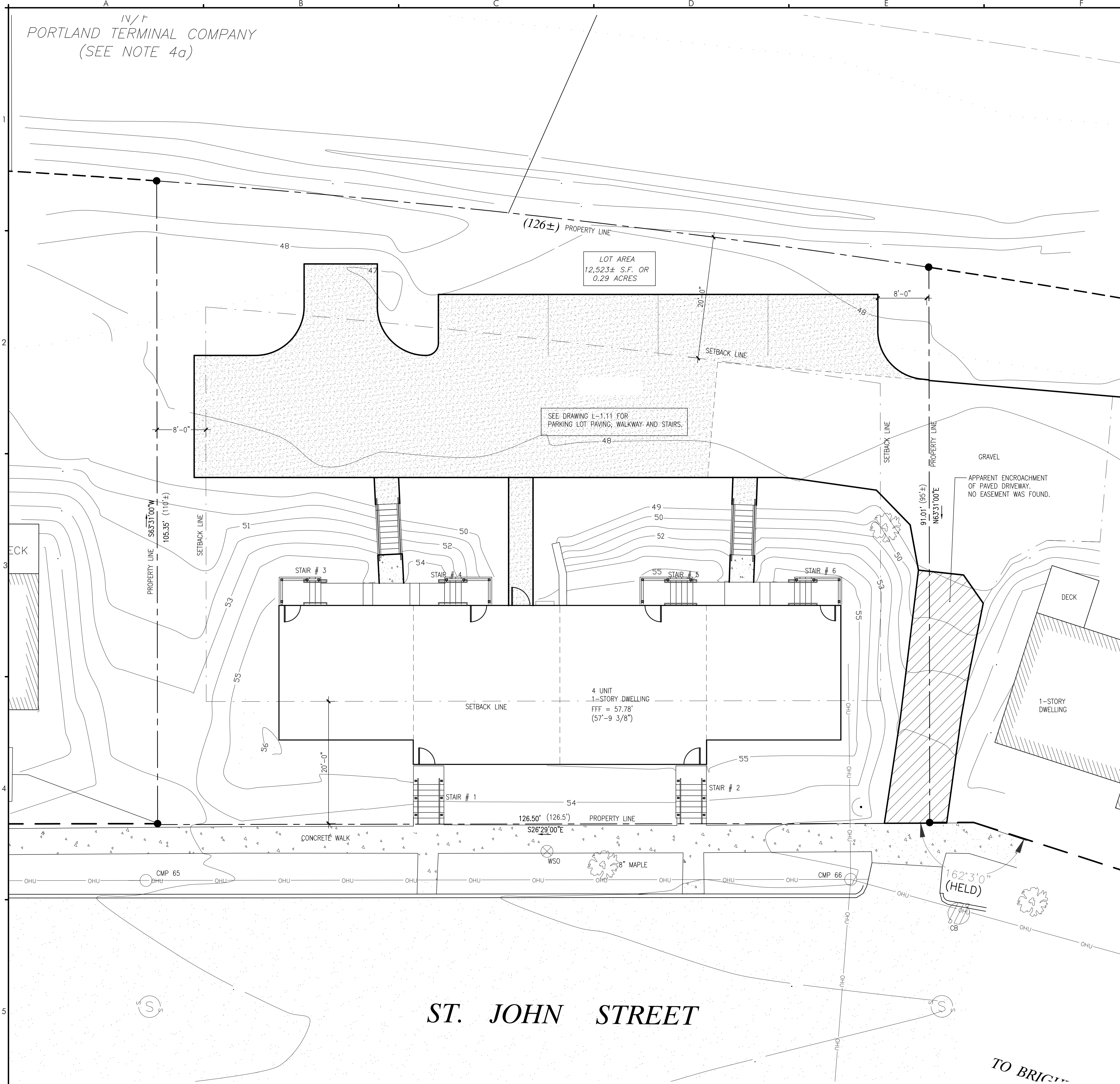
REVISIONS

NO.	DESCRIPTION

DRAWING NUMBER

L1.10

SCALE: AS NOTED
 DATE: 1/13/2017



TYPE	CONSTRUCTION	USE
PAVEMENT	<ul style="list-style-type: none"> NEW 1 1/2" (MIN.) TO 3"(MAX) MDOT TYPE "A" GRAVEL EXISTING SUBBASE TO REMAIN 	PARKING LOT & ACCESS DRIVE
PAVEMENT	<ul style="list-style-type: none"> NEW 1 1/2" (MIN.) TO 3"(MAX) MDOT TYPE "A" GRAVEL EXISTING SUBBASE TO REMAIN 	SIDEWALKS
WOODMULCH	<ul style="list-style-type: none"> WOODMULCH PREPARED SUBGRADE 	PLANT BEDS
LOAM AND SEED	<ul style="list-style-type: none"> PREPARED TOPSOIL, NO STONES OVER 3/4" DIA. PREPARED SUBGRADE 	LAWN AREA

NOTE: ALL COURSE THICKNESSES AFTER FINAL COMPACTION.

SCHEDULE OF SURFACE FINISHES NOT TO SCALE

A5 SITEPLAN
 REFERENCED FROM: SCALE: 1/8" = 1'-0"

F5 SCHEDULE OF SURFACE FINISHES
 REFERENCED FROM: SCALE: N.T.S.