

DESIGNER

CWS ARCHITECTS
ARCHITECTURE | INTERIOR DESIGN
434 CUMBERLAND AVENUE
PORTLAND, MAINE 04101
T: 207.774.4441
F: 207.774.4016
WWW.CWSARCH.COM

OWNER

COMMUNITY HOUSING
OF MAINE INC.

ONE CITY CENTER, 4TH FLOOR
PORTLAND, MAINE 04101

PROJECT

548 SAINT JOHN STREET
APARTMENT

548 SAINT JOHN STREET
PORTLAND, MAINE 04101

DRAWING

BUILDING ELEVATIONS
REMOVALS

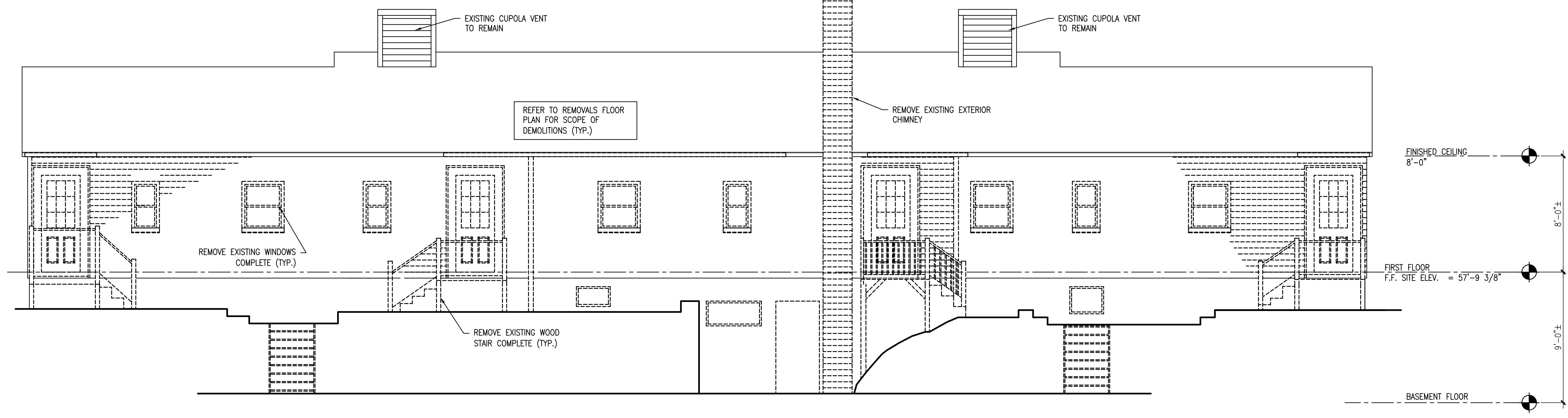
CWS PROJECT NUMBER: 16.019

REVISIONS

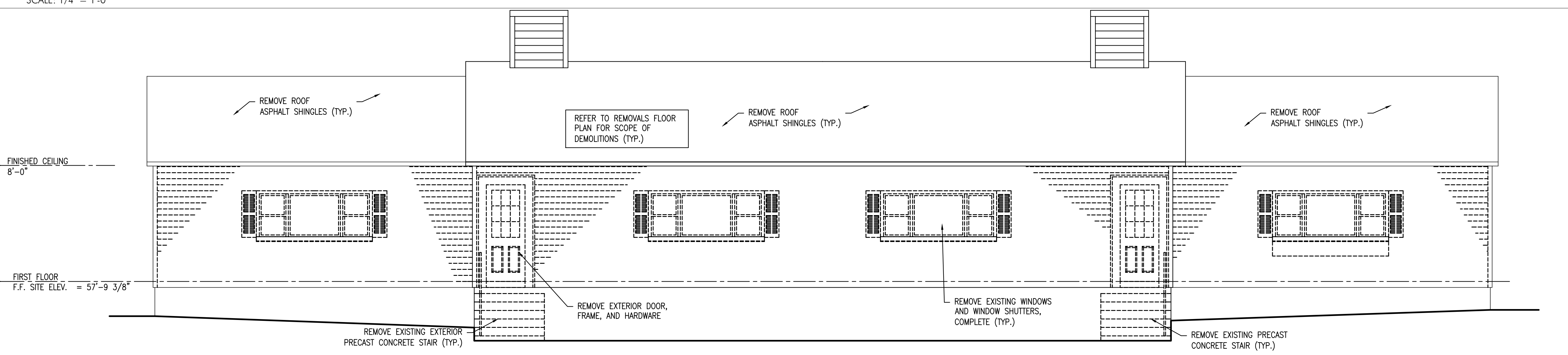
DRAWING NUMBER

D3.01

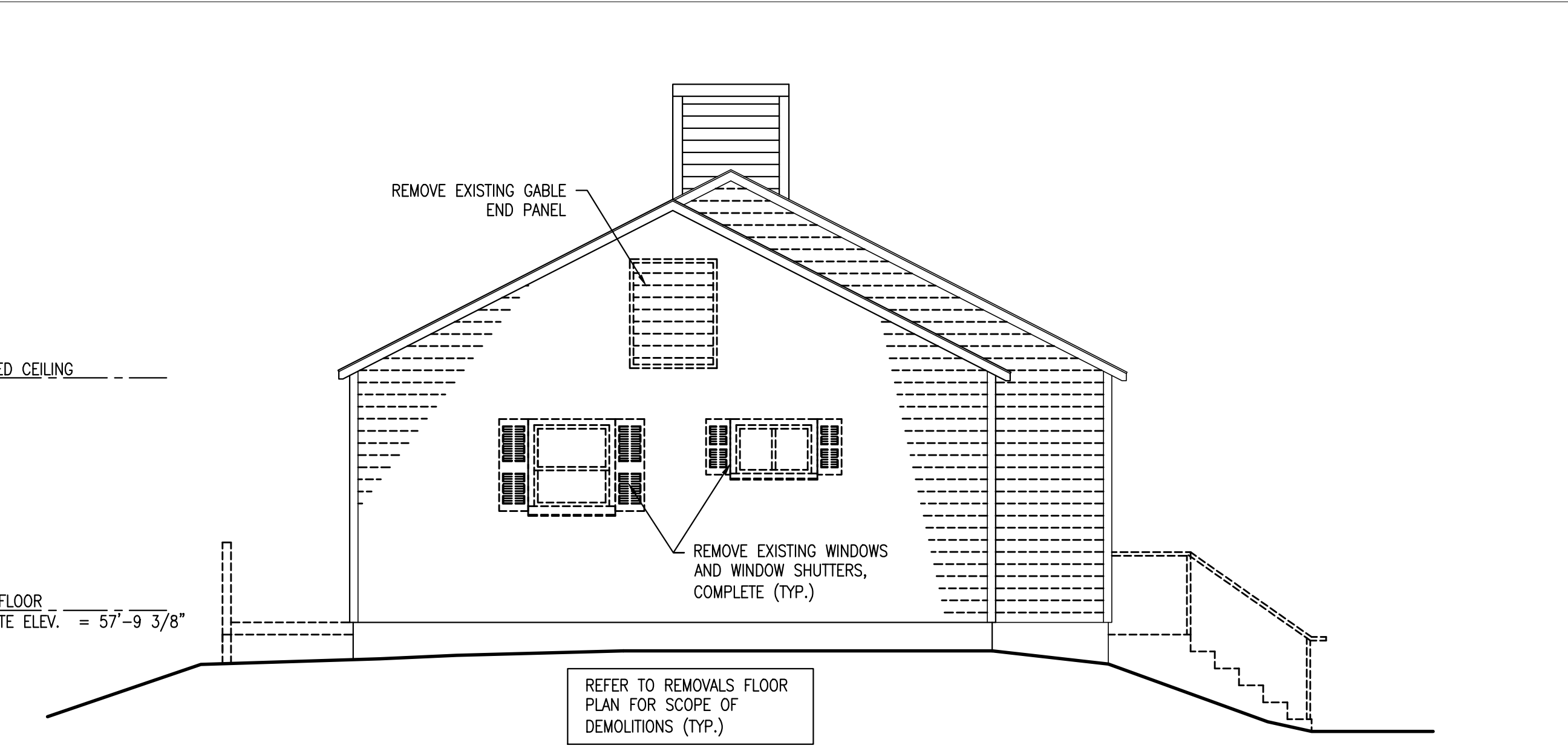
SCALE: AS NOTED
DATE: 1/13/2017



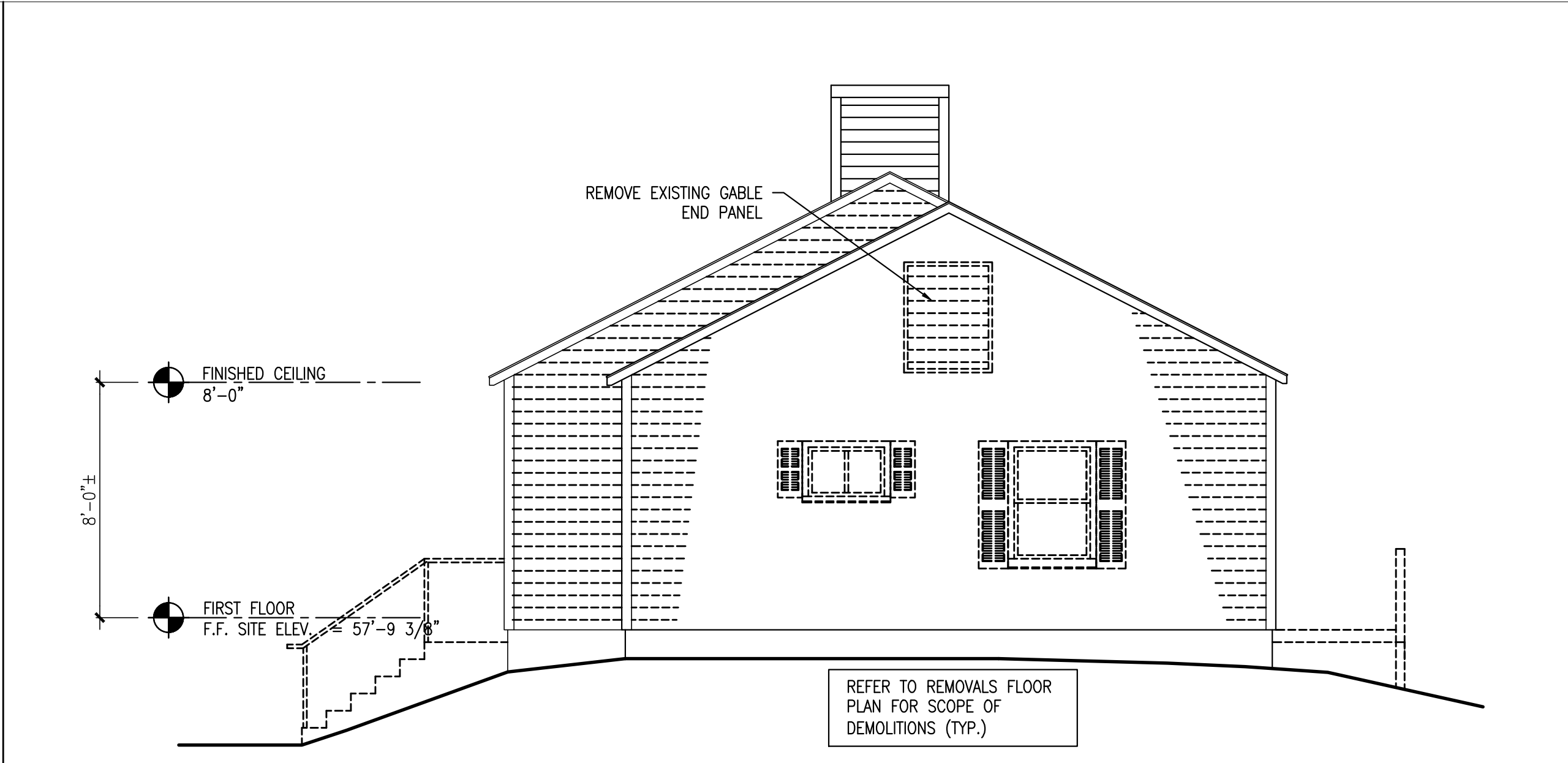
A2 BUILDING ELEVATION REMOVALS
REFERENCED FROM: SCALE: 1/4" = 1'-0"



A3 BUILDING ELEVATION REMOVALS
REFERENCED FROM: SCALE: 1/4" = 1'-0"



A5 BUILDING ELEVATION REMOVALS
REFERENCED FROM: SCALE: 1/4" = 1'-0"



E5 BUILDING ELEVATION REMOVALS
REFERENCED FROM: SCALE: 1/4" = 1'-0"

© 2017 CWS Architects, Inc. All rights reserved. No part of this drawing may be reproduced without the written consent of CWS Architects, Inc.