

DESIGNER

CWS ARCHITECTS  
ARCHITECTURE | INTERIOR DESIGN  
434 CUMBERLAND AVENUE  
PORTLAND, MAINE 04101  
T: 207.774.4441  
F: 207.774.4016  
WWW.CWSARCH.COM

OWNER

COMMUNITY HOUSING  
OF MAINE INC.  
  
ONE CITY CENTER, 4TH FLOOR  
PORTLAND, MAINE 04101

PROJECT

548 SAINT JOHN STREET  
APARTMENT

DRAWING

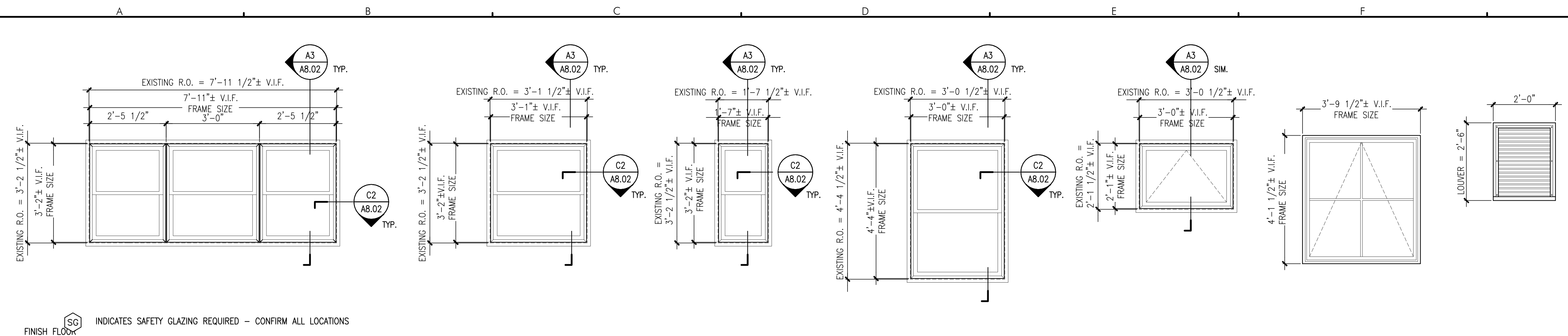
WINDOW AND DOOR  
ELEVATIONS AND DETAILS

REVISIONS

NO.	DESCRIPTION

DRAWING NUMBER  
**A8.01**

SCALE: AS NOTED  
DATE: 1/13/2017

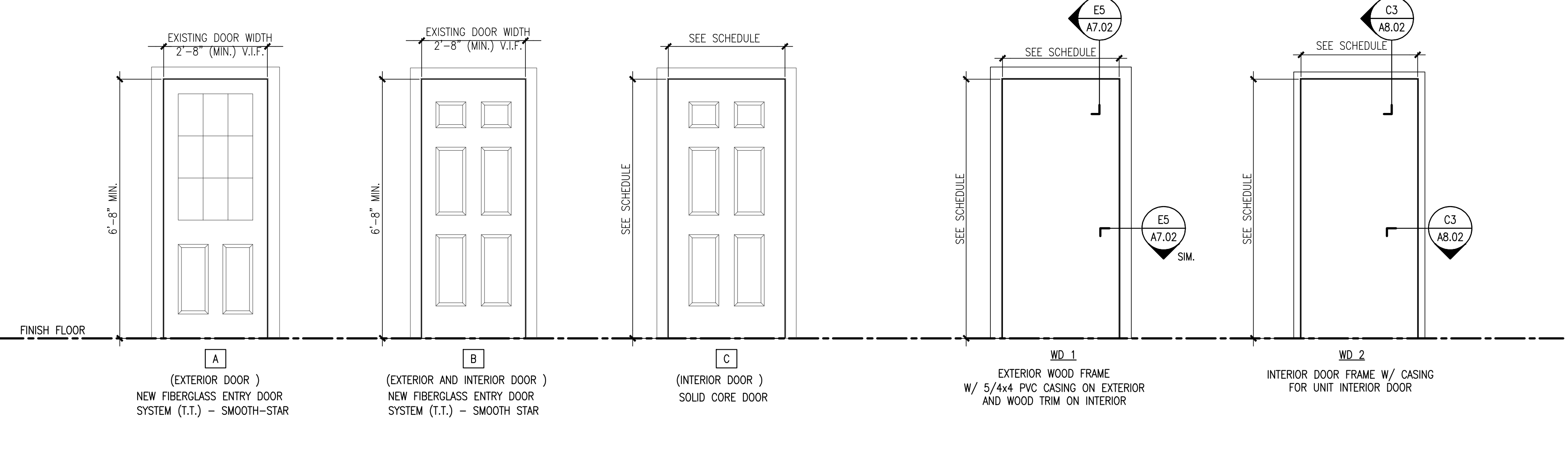


INDICATES SAFETY GLAZING REQUIRED - CONFIRM ALL LOCATIONS

A SINGLE HUNG (TRIPLE) VINYL WINDOW SEE WINDOW SCHEDULE FOR DETAILS  
B SINGLE HUNG VINYL WINDOW SEE WINDOW SCHEDULE FOR DETAIL  
C SINGLE HUNG VINYL WINDOW SEE WINDOW SCHEDULE FOR DETAILS  
D SINGLE HUNG VINYL WINDOW SEE WINDOW SCHEDULE FOR DETAIL  
E AWNING VINYL WINDOW SEE WINDOW SCHEDULE FOR DETAILS  
F AWNING VINYL WINDOW  
G VENTED CABLE END LOUVER

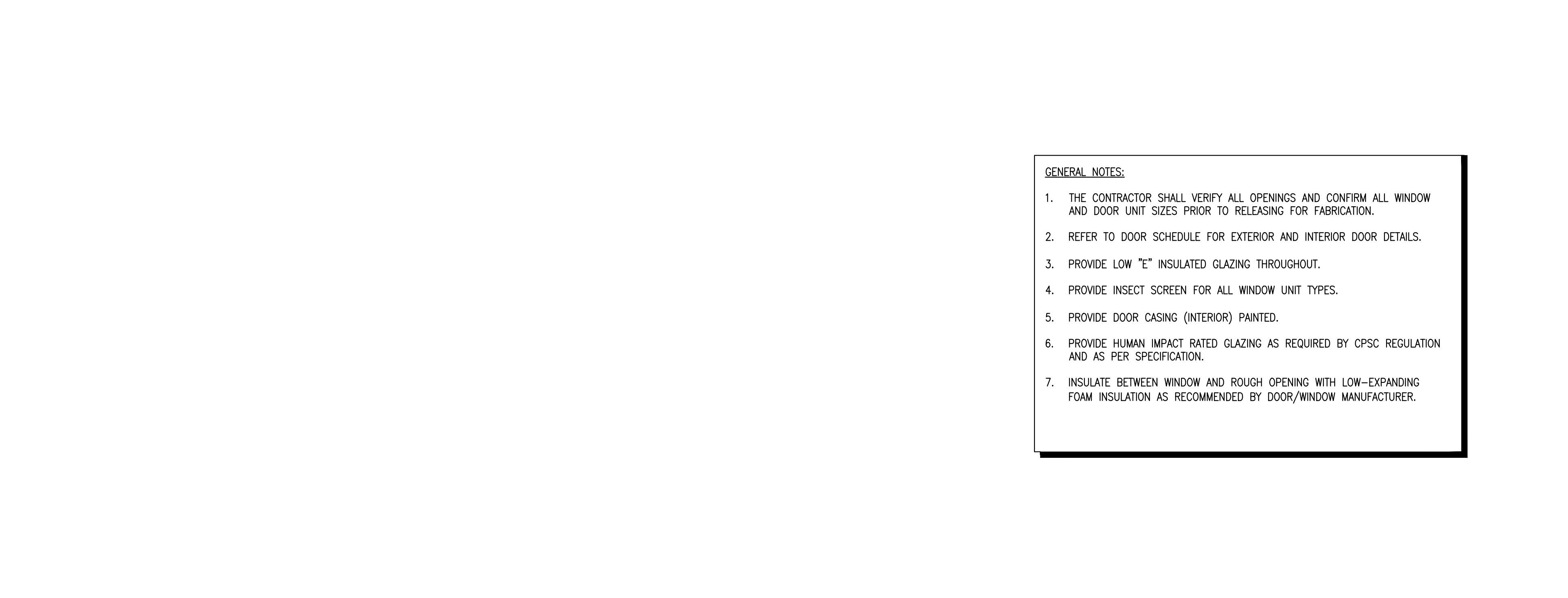
**A2 WINDOW ELEVATIONS**

REFERENCED FROM: SCALE: 1/2" = 1'-0"



**A3 DOOR ELEVATIONS AND DOOR FRAME ELEVATIONS**

REFERENCED FROM: SCALE: 1/2" = 1'-0"

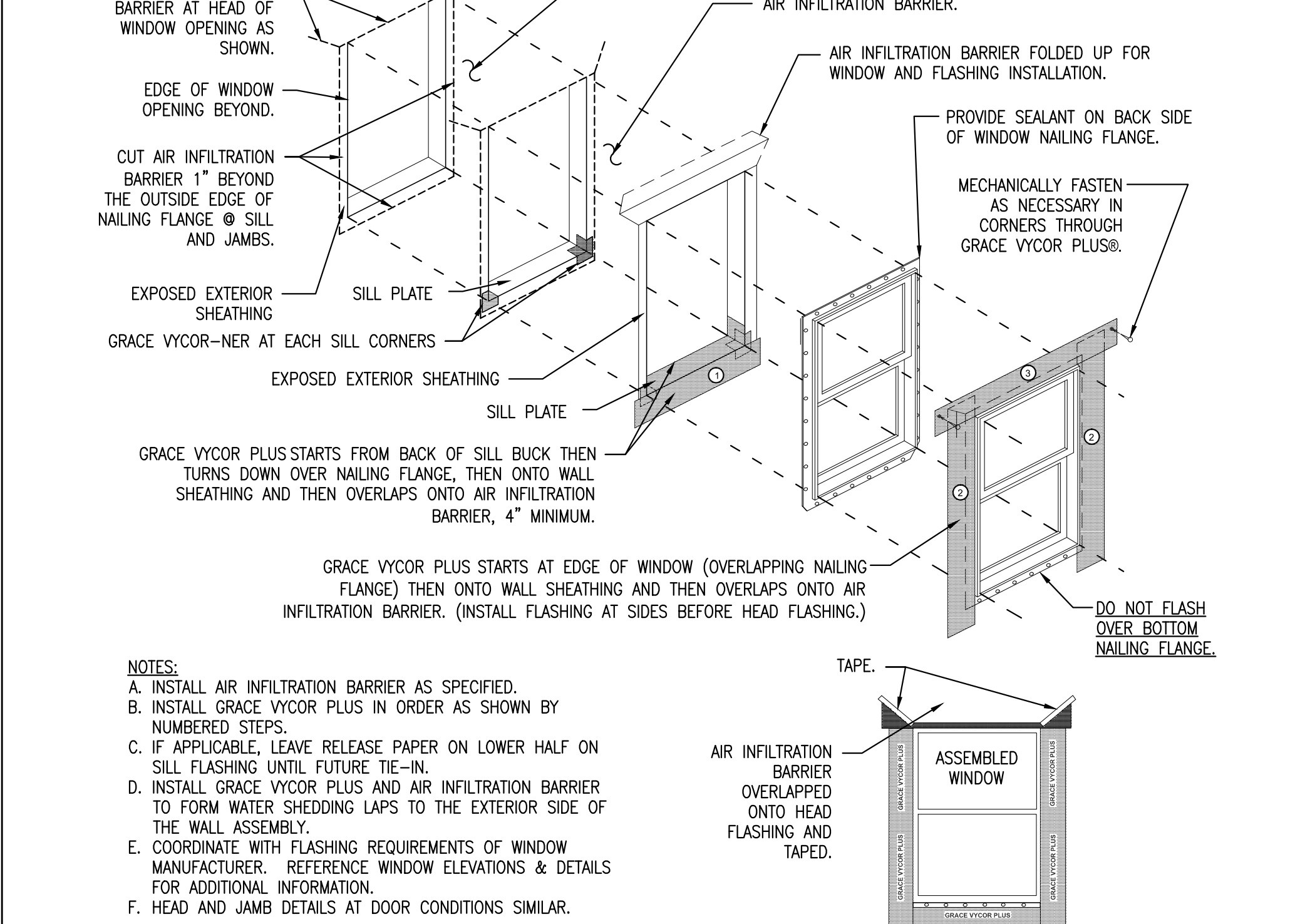


**A5**

REFERENCED FROM: SCALE: 1/2" = 1'-0"

**E3**

REFERENCED FROM: SCALE:



**E5 FLASHING DETAIL AT WINDOWS**

REFERENCED FROM: SCALE: 3" = 1'-0"