

**CWS ARCHITECTS**  
ARCHITECTURE | INTERIOR DESIGN  
68 CUMBERLAND AVENUE  
PORTLAND, MAINE 04101  
T: 207.774.4441  
F: 207.774.4016  
WWW.CWSARCH.COM

**OWNER**  
COMMUNITY HOUSING  
OF MAINE INC.  
ONE CITY CENTER, 4TH FLOOR  
PORTLAND, MAINE 04101

**PROJECT**  
548 SAINT JOHN STREET  
APARTMENT

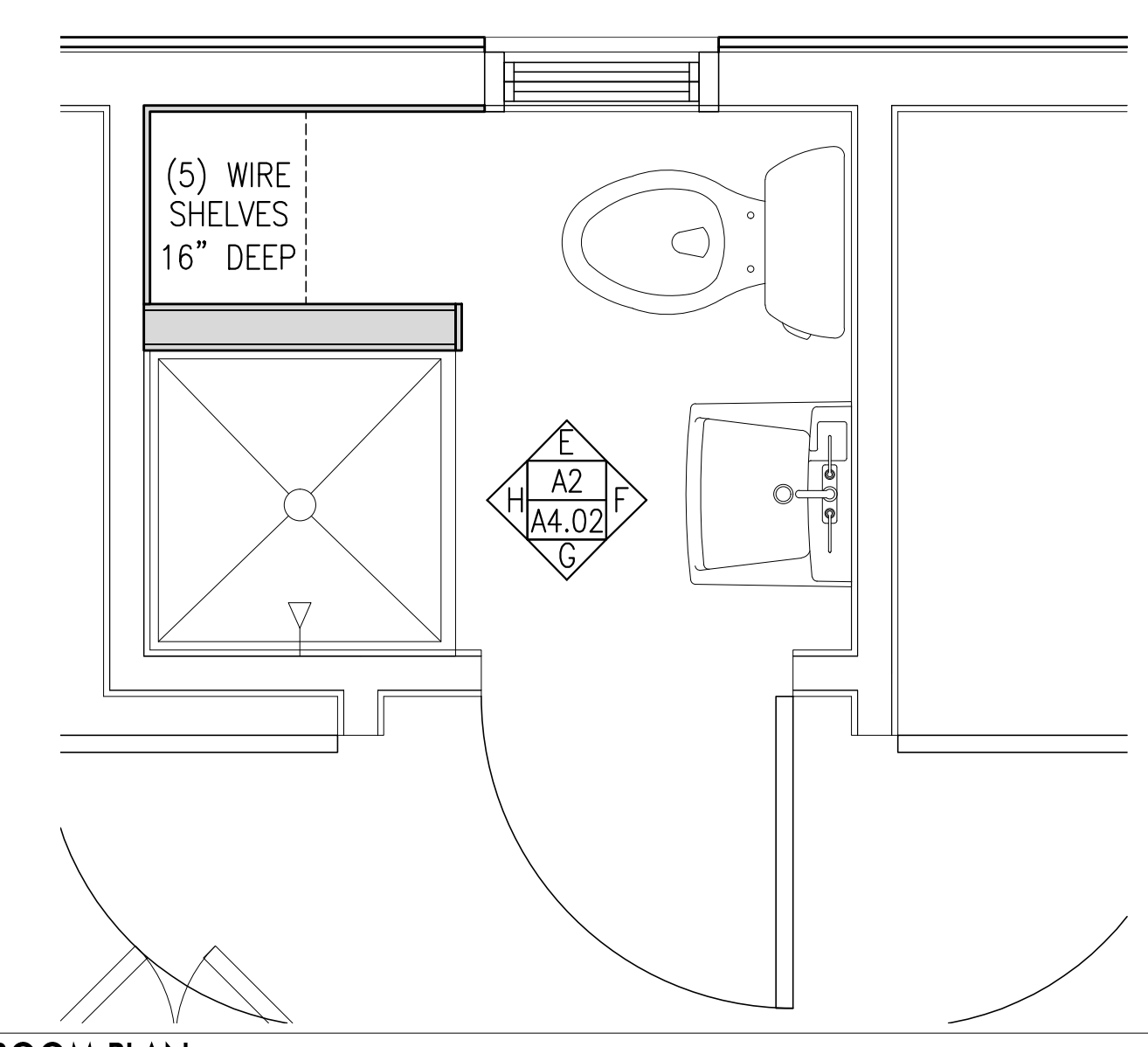
**DRAWING**  
ENLARGED BATHROOM  
PLANS AND BATHROOM  
INTERIOR ELEVATIONS

**REVISIONS**

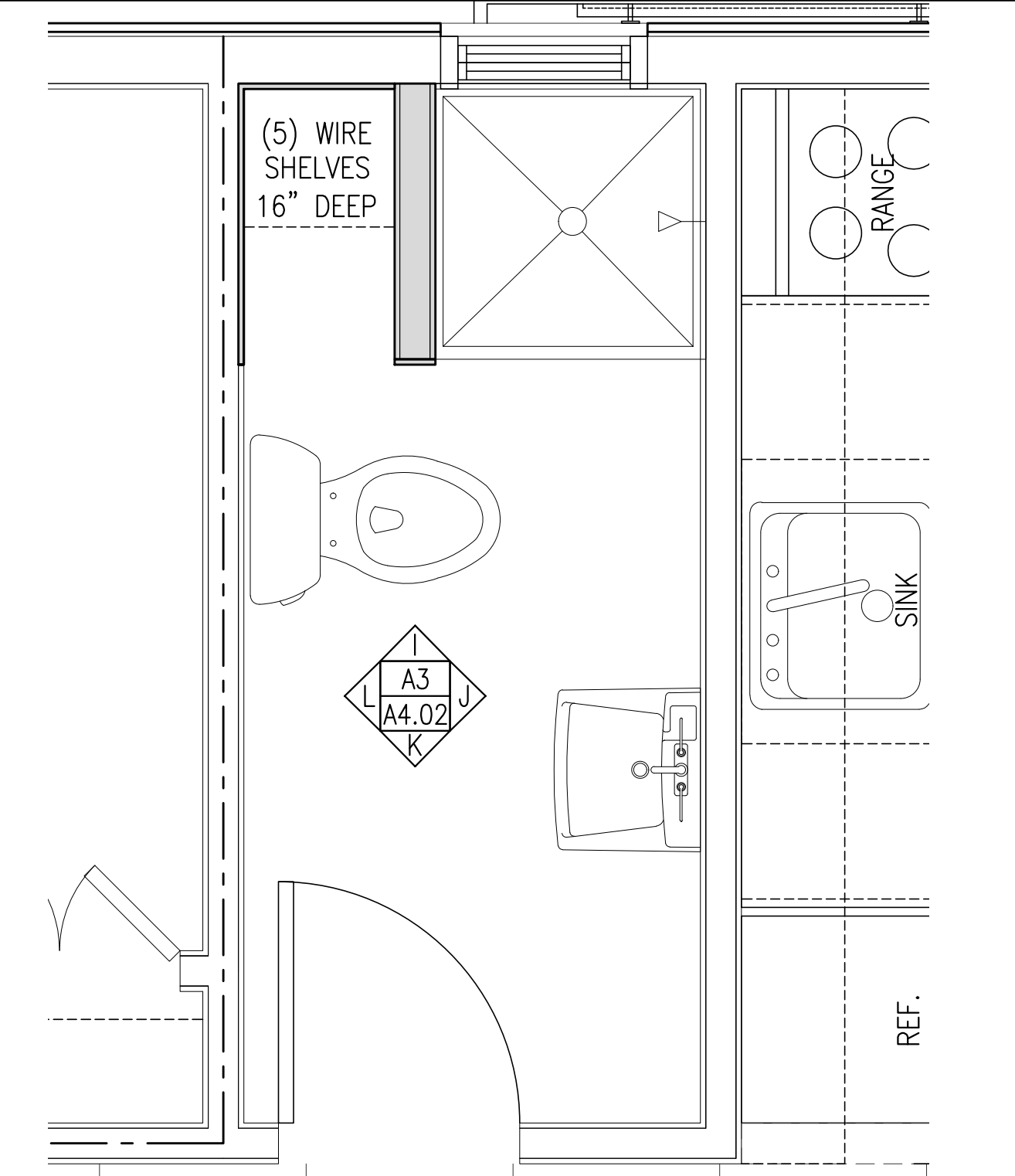
NO.	DESCRIPTION

DRAWING NUMBER  
**A4.02**

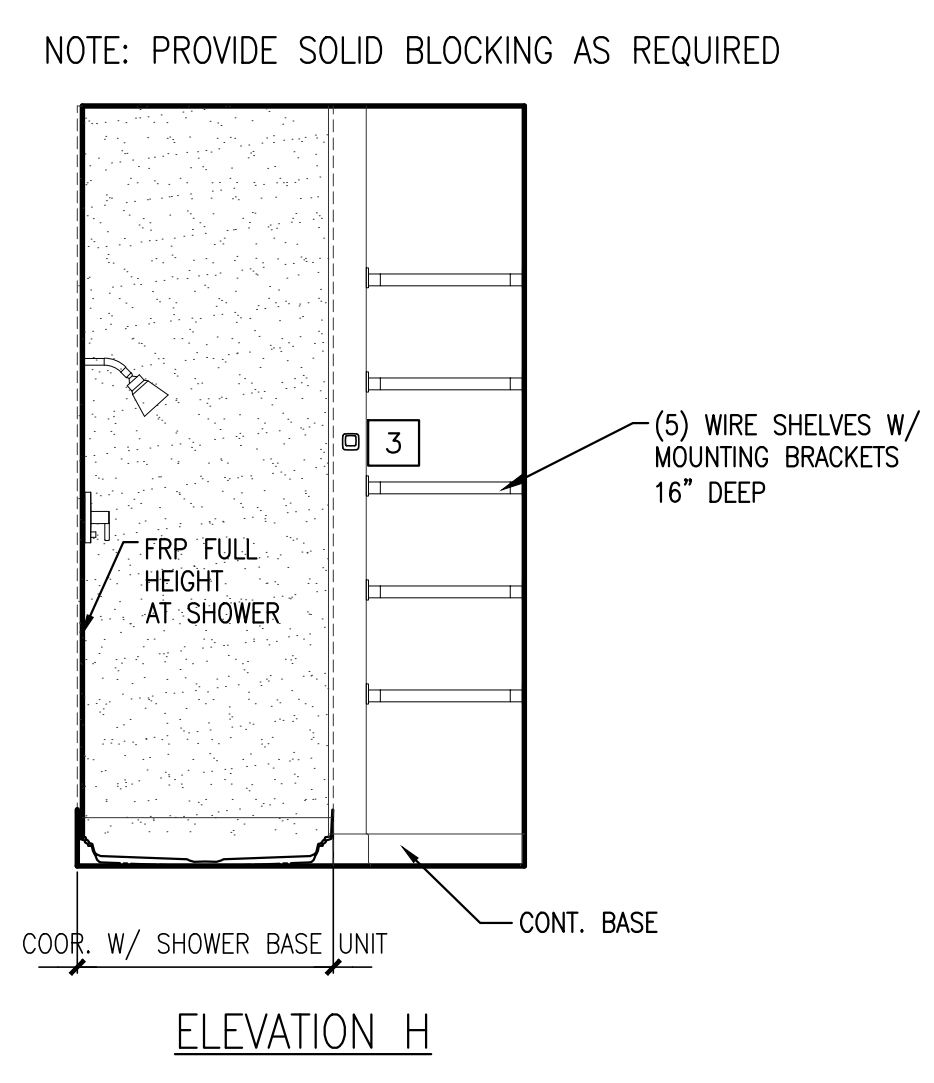
SCALE: AS NOTED  
DATE: 1/13/2017



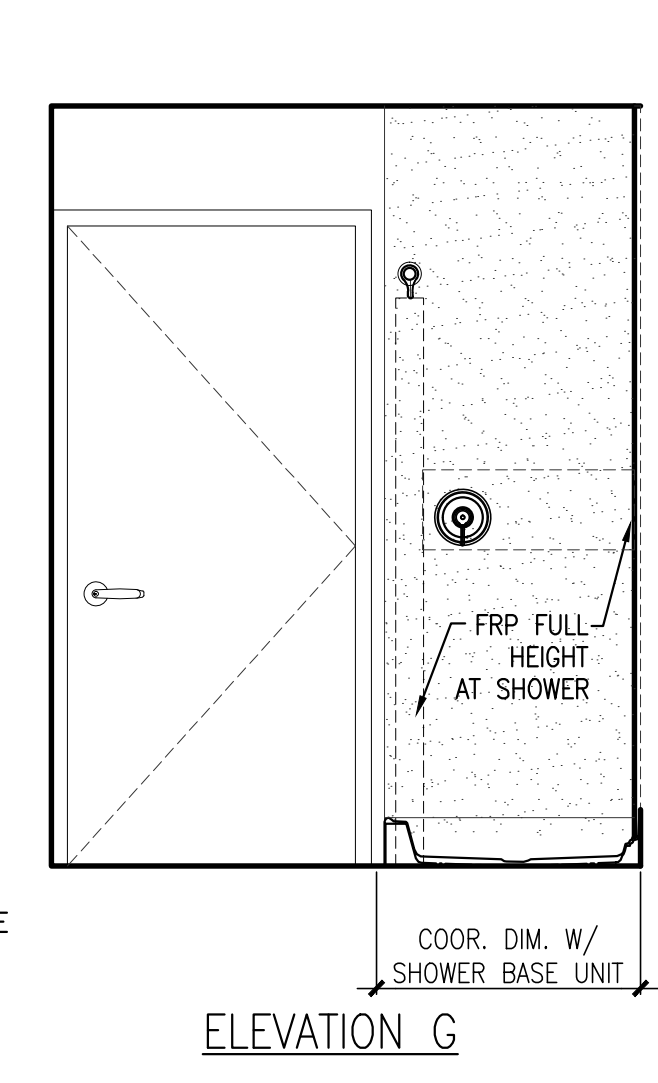
**F2 BATHROOM PLAN**  
REFERENCED FROM: SCALE: 1/2" = 1'-0"



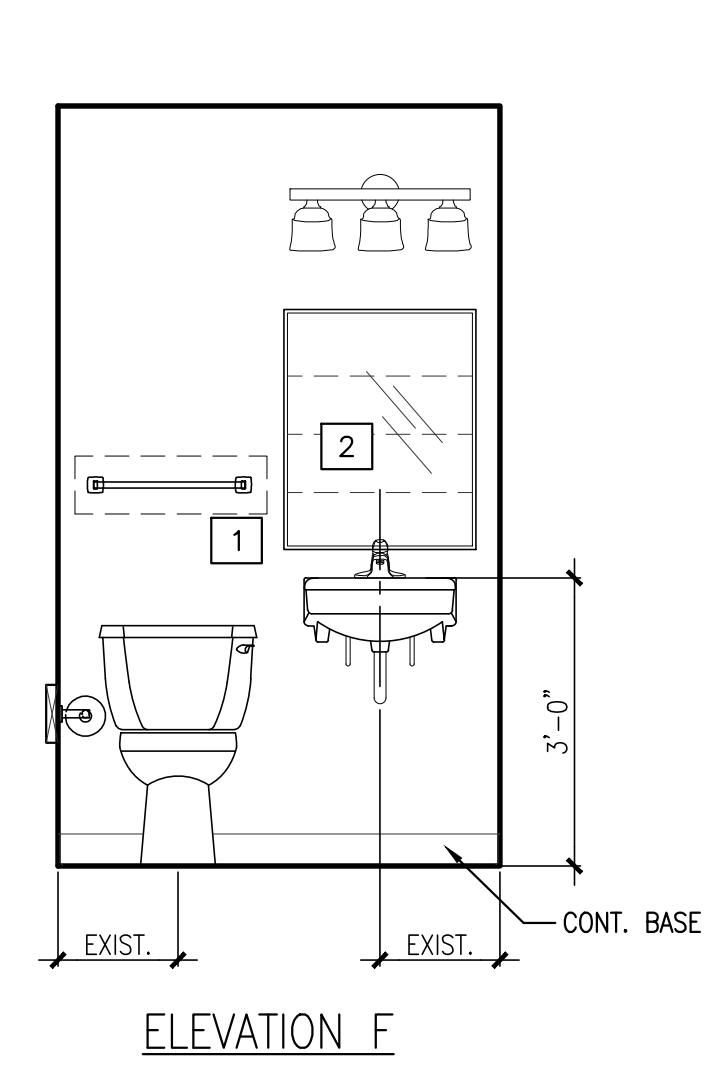
**F3 BATHROOM PLAN**  
REFERENCED FROM: SCALE: 1/2" = 1'-0"



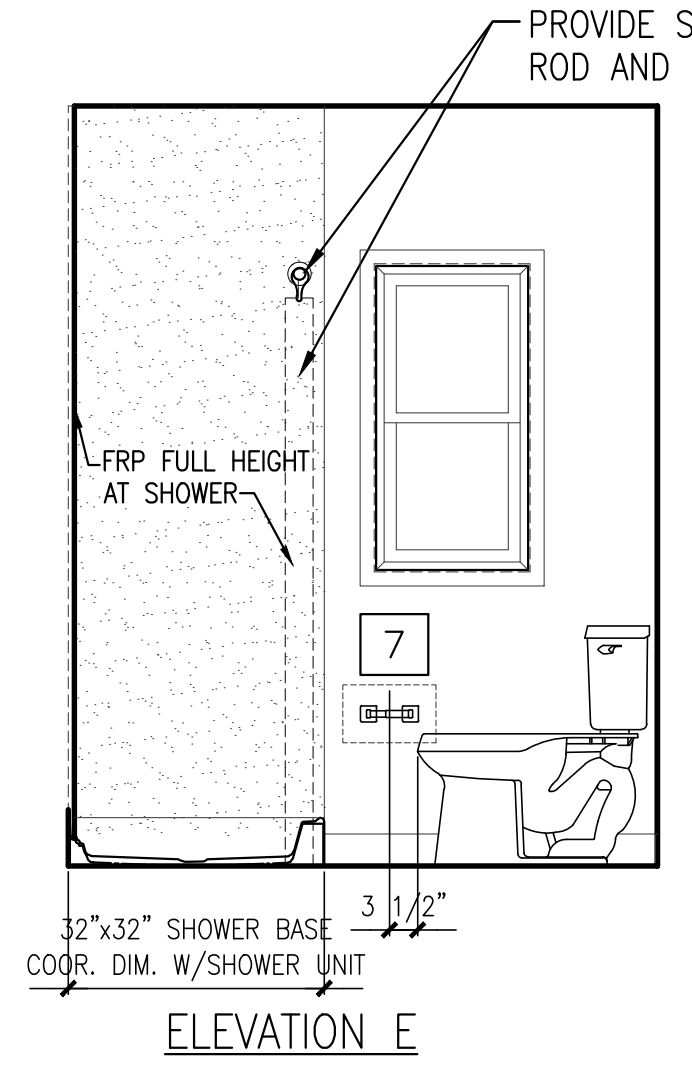
**ELEVATION H**



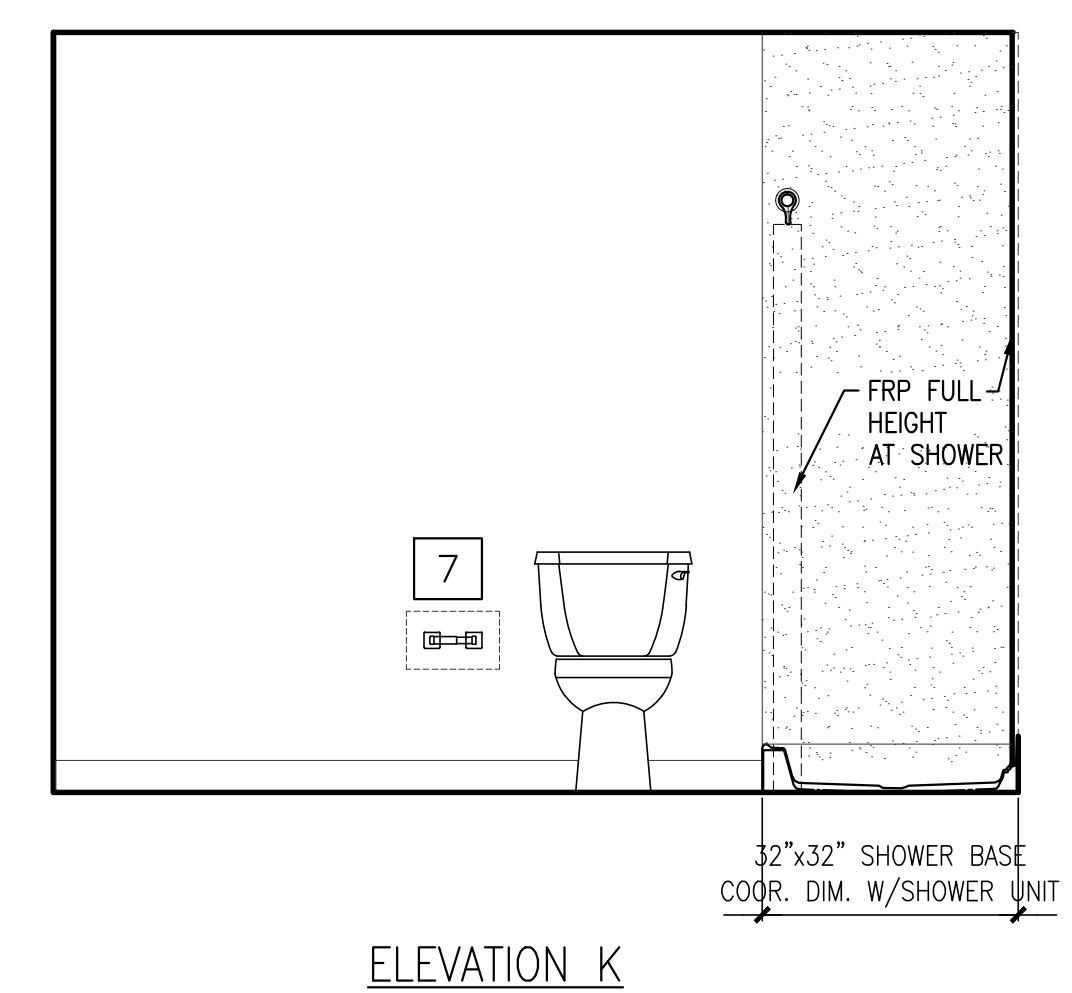
**ELEVATION G**



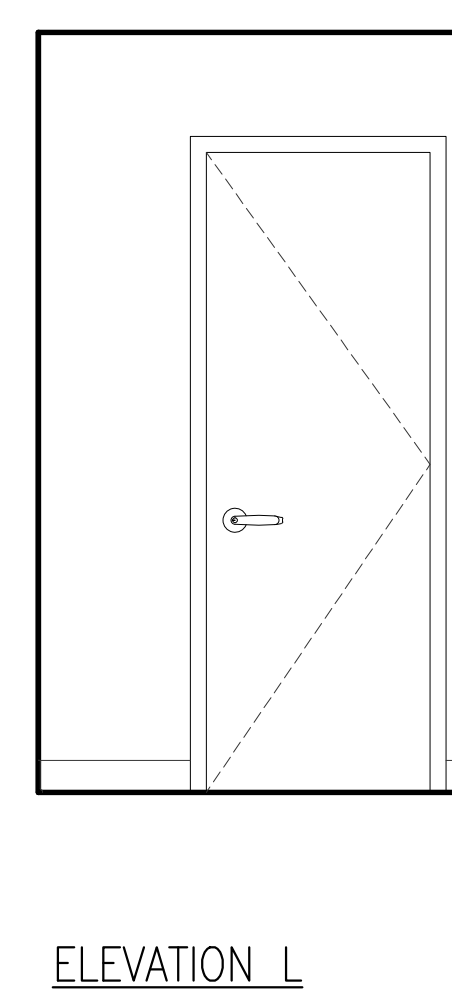
**ELEVATION F**



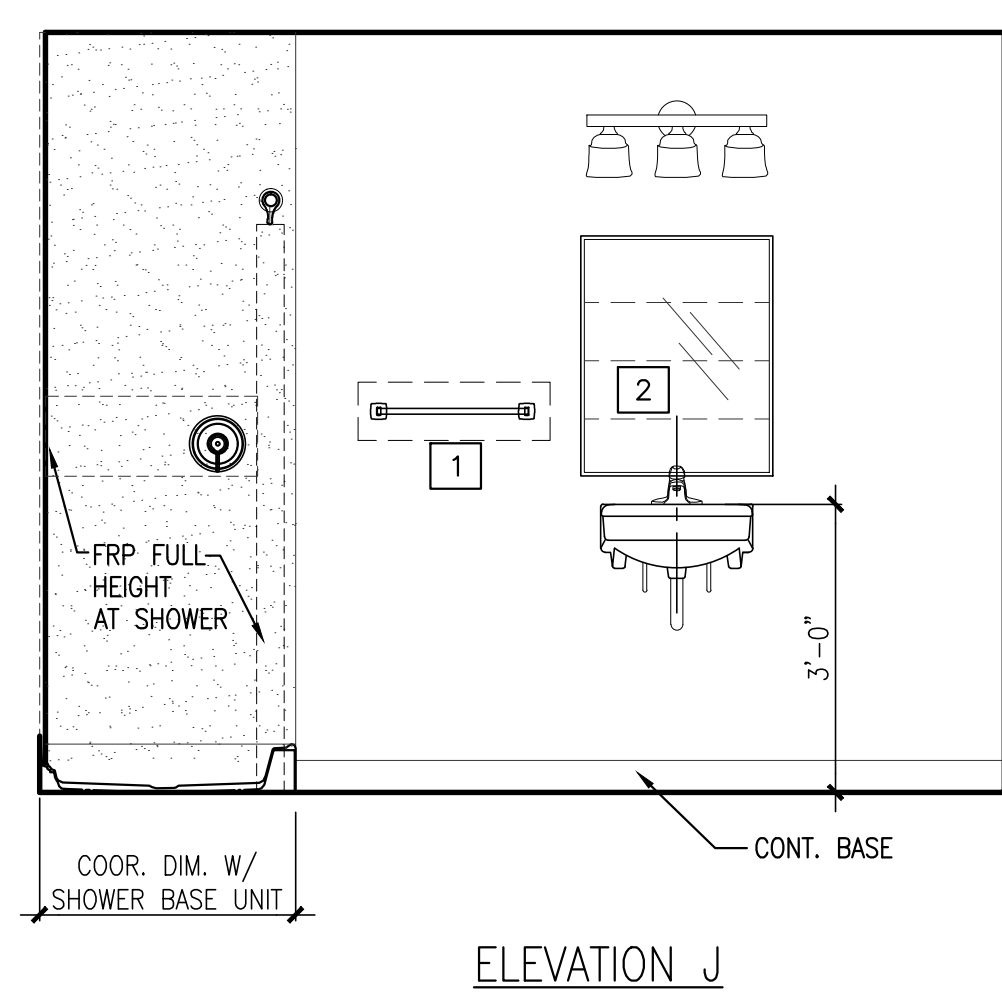
**ELEVATION E**



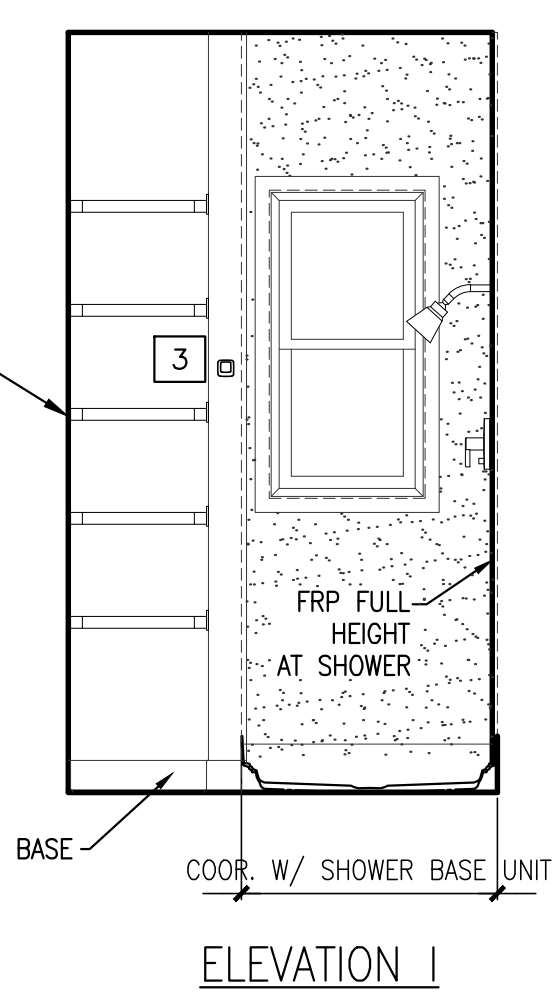
**ELEVATION K**



**ELEVATION L**



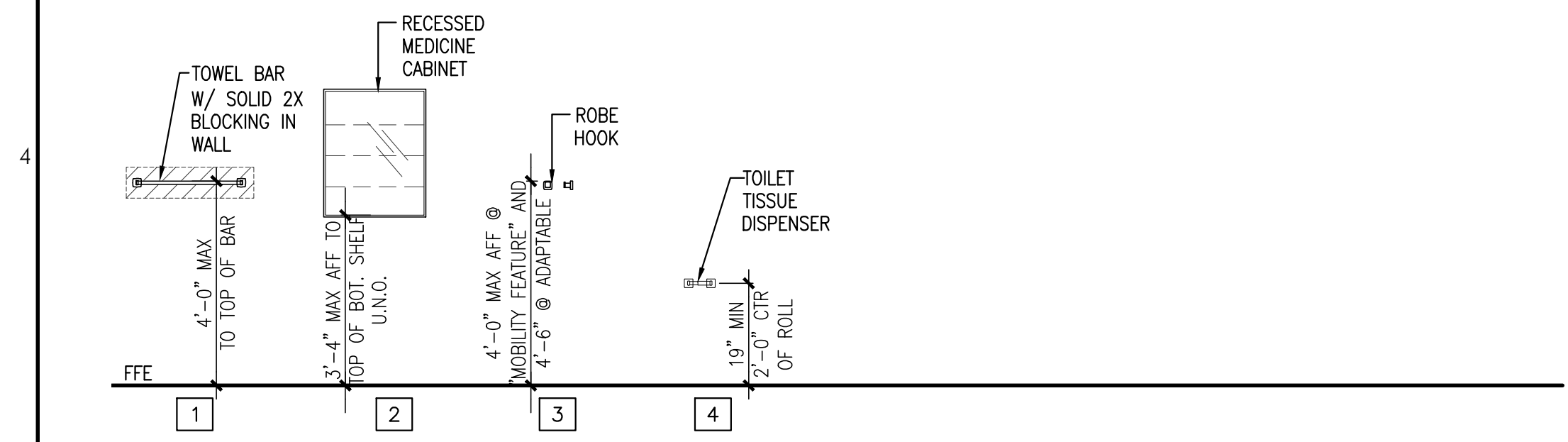
**ELEVATION J**



**ELEVATION I**

**A2 BATHROOM INTERIOR ELEVATION**  
REFERENCED FROM: SCALE: 1/2" = 1'-0"

**A3 BATHROOM INTERIOR ELEVATION**  
REFERENCED FROM: SCALE: 1/2" = 1'-0"



**BATHROOM AND PUBLIC TOILET ROOM ACCESSORY MOUNTING HEIGHTS**

**BATHROOM AND PUBLIC TOILET ROOM ACCESSORY LEGEND**

- 1 18" TOWEL BAR, EXTRA-HEAVY-DUTY
- 2 RECESSED MEDICINE CABINET
- 3 ROBE HOOK, SINGLE
- 4 TOILET TISSUE DISPENSER, SINGLE-ROLL, SURFACE MOUNTED

**DOOR STOP SYMBOLS LEGEND**

- ▣ WALL MOUNTED STOP
- DOOR MOUNTED ROLLER BUMPER

NOTE: REF. UNIT LAYOUT FLOOR PLANS FOR DOOR STOP LOCATIONS.

**GENERAL NOTES:**

- 1.) CONTRACTOR SHALL PROVIDE SOLID BLOCKING AS REQUIRED FOR ALL TOILET ACCESSORIES, SHOWER GRAB BARS, AND DOOR STOPS.
- 2.) PROVIDE FINISH FLOORING UNDER ALL BASE CABINETS, REMOVABLE SINK CABINETS FRONT AND REMOVABLE PANEL AT SINK AND OPEN WORK SURFACE.
- 3.) PROVIDE FINISH WALL WITH WALL BASE BEHIND ALL REMOVABLE CABINETS AND SINK ENCLOSURES.
- 4.) VERIFY DOOR STOP/BUMPER LOCATIONS IN FIELD PRIOR TO STOP/BUMPER INSTALLATION, TYPICAL.

**A5 MOUNTING HEIGHTS**  
REFERENCED FROM: SCALE: 3/8" = 1'-0"