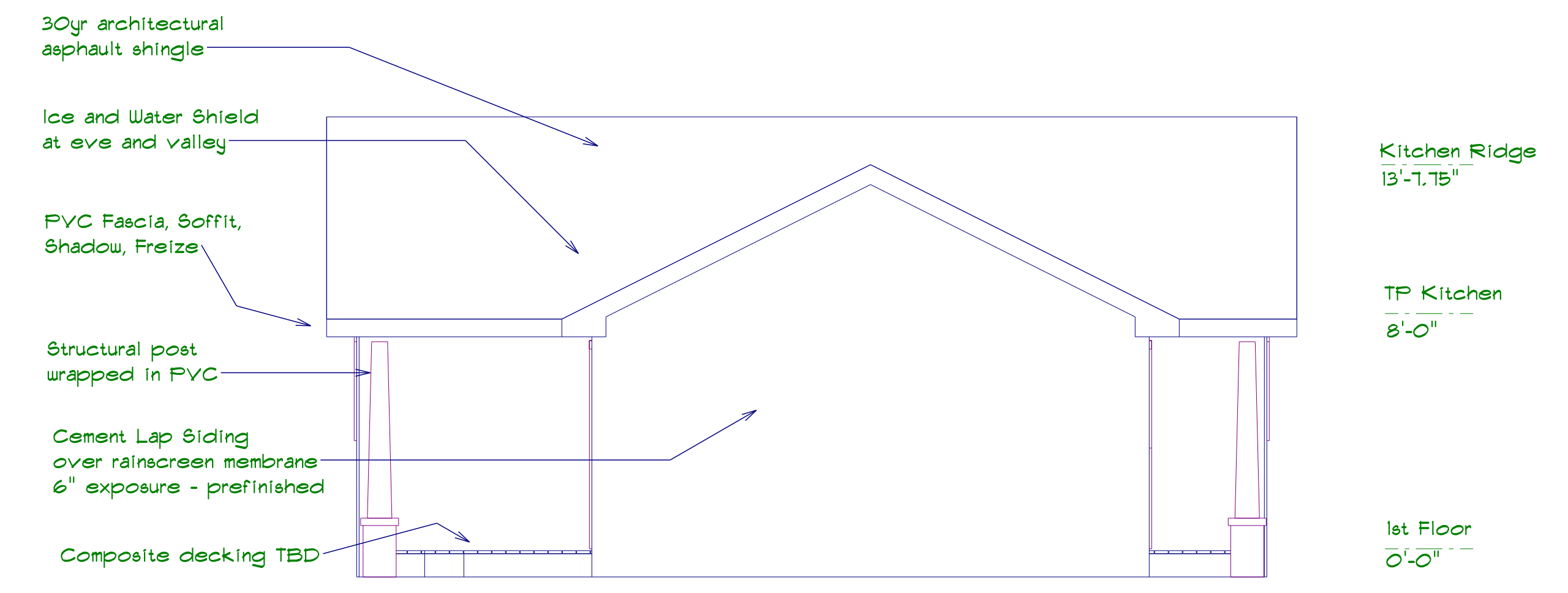


HOUSE EAST



HOUSE NORTH

~Deck joists to be PT 2x8 @ 16" O.C. and will be hangered to ledger and girter with approved metal hanger. Joist size and spacing meets criteria as specified in table 502.3.1a in irc 2009

~Deck girter to be PT 2-2x10 not to exceed 13' as specified by table 502.3.3a in irc 2009

~Deck ledger will be attached using 4" Maine Deck Brackets and will be attached in two locations using a joist-to-joist through bolt fastener.

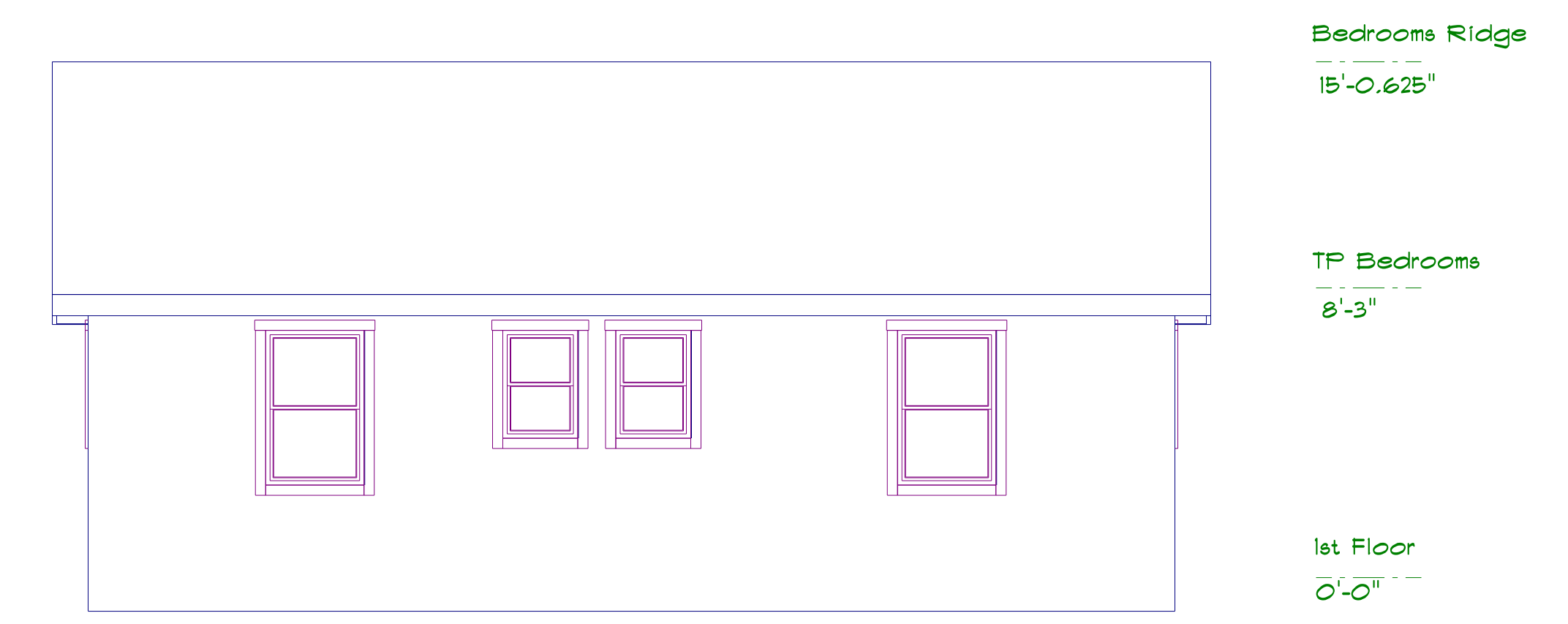
~Structural posts shall be a minimum of 4"x4" and shall sit on a 6"x48" tapered pre-cast concrete pier with a 18"x6" round pre-cast concrete footing. The footing will be burried a minimum of 48" below grade. This meets criteria specified in section R401 and table 403.1

~Deck heights will be below 30" within 4' of the edge of any deck surface. Gaurd rails will be wood with the top rail set at 36". Balusters will vertical and will be spaced 4" O.C.

~Deck stairs will be a maximum 7" rise and a minimum 11" run. Handrails will be wood and will be set at 34" high from the leading edge of each step. Hand rail profile will meet the criteria of a graspable hand rail as specified by section R311.1.7.3 in irc 2009.



HOUSE WEST



HOUSE SOUTH

<p>BASSETT CUSTOM HOME BUILDERS INC DURHAM, MAINE BBASSETT9105@GMAIL.COM 207.212.9105</p>	TERRY DURREL AND MARK ROGERS	
	HOPE HOUSE RENOVATION	
	563 ST JOHN STREET PORTLAND, MAINE	