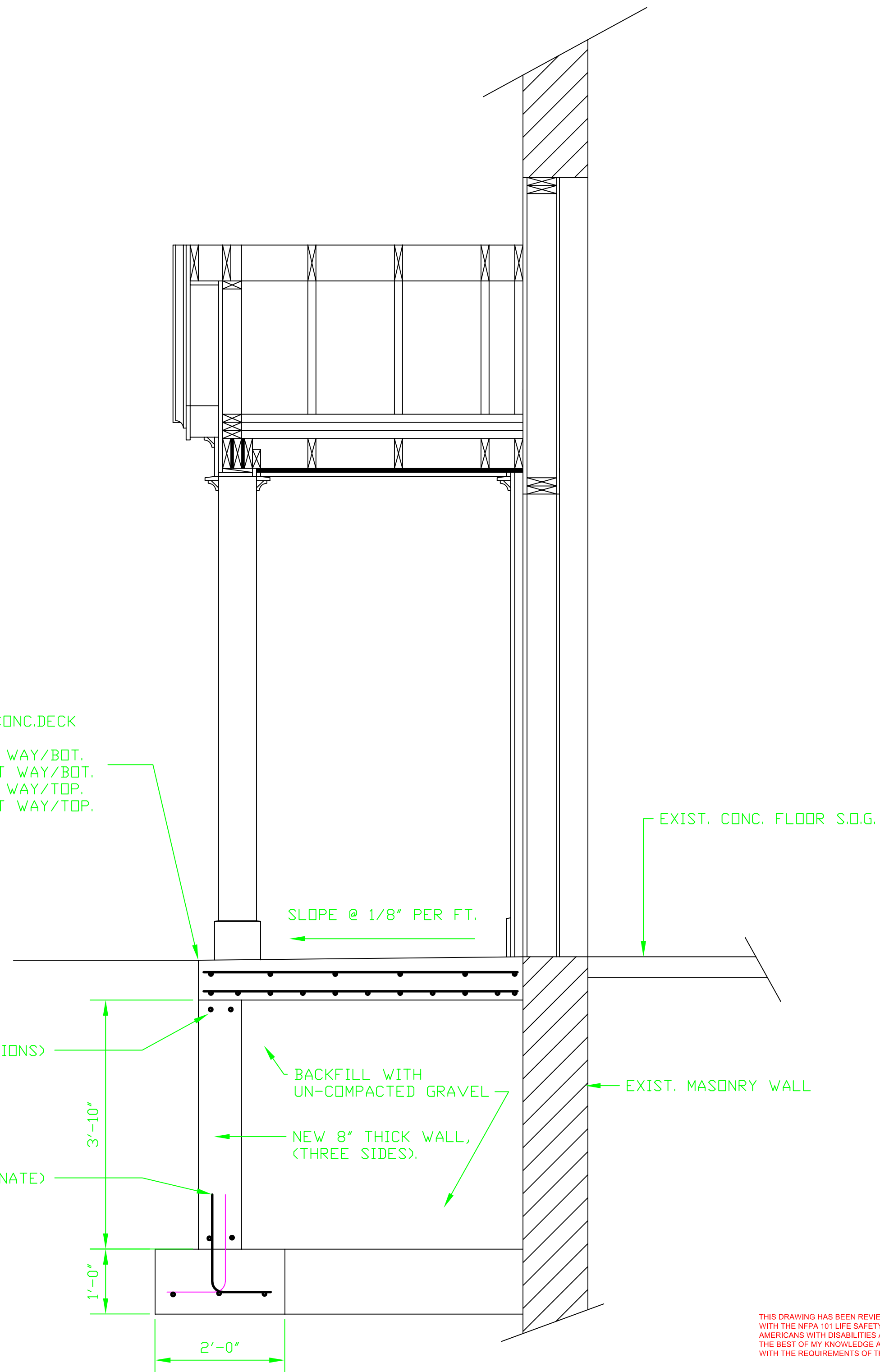


NEW 8" SUSPENDED CONC. DECK
 REINF. AS FOLLOWS:
 # @ ' D.C. LONG WAY/BOT.
 # @ ' D.C. SHORT WAY/BOT.
 # @ ' D.C. LONG WAY/TOP.
 # @ ' D.C. SHORT WAY/TOP.

#5 BARS CONT. (TYPICAL @ 7 LOCATIONS)

#5 DOWELS (10"x20") @ 18"D.C. (ALTERNATE)



THIS DRAWING HAS BEEN REVIEWED FOR COMPLIANCE WITH THE NFPA 101 LIFE SAFETY CODE 2000 AND THE AMERICANS WITH DISABILITIES ACT OF 1991 AND TO THE BEST OF MY KNOWLEDGE AND BELIEF, CONFORMS WITH THE REQUIREMENTS OF THESE ORDINANCES.

SECTION "A - A"

GENERAL NOTES:

NO.	REVISION/ISSUE	DATE

CONVERSION OF EXISTING
 METER DEPARTMENT SHOP TO
 TRAINING AND MEETING FACILITY
 FOR
 PORTLAND WATER DISTRICT
 225 DOUGLAS ST., PORTLAND, MAINE

ZACHAU CONSTRUCTION, INC.
 1185 U.S. ROUTE ONE P.O. BOX J
 FREEPORT, MAINE 04032-0916
 TEL: (207) 865-9925 FAX: (207) 865-9926

DRAWING FILE NAME:

BY: **DJB** DATE: **8-16-02**

SCALE: **3/4" = 1'-0"**

A6