

ALPHAarchitects  
 17 CHESTNUT STREET  
 PORTLAND, ME 04101  
 PHONE: 207.761.9500  
 FAX: 207.761.9595  
 design@alphaarchitects.com

COPYRIGHT

Reuse or reproduction of the contents of this document is not permitted without written permission of ALPHA ARCHITECTS

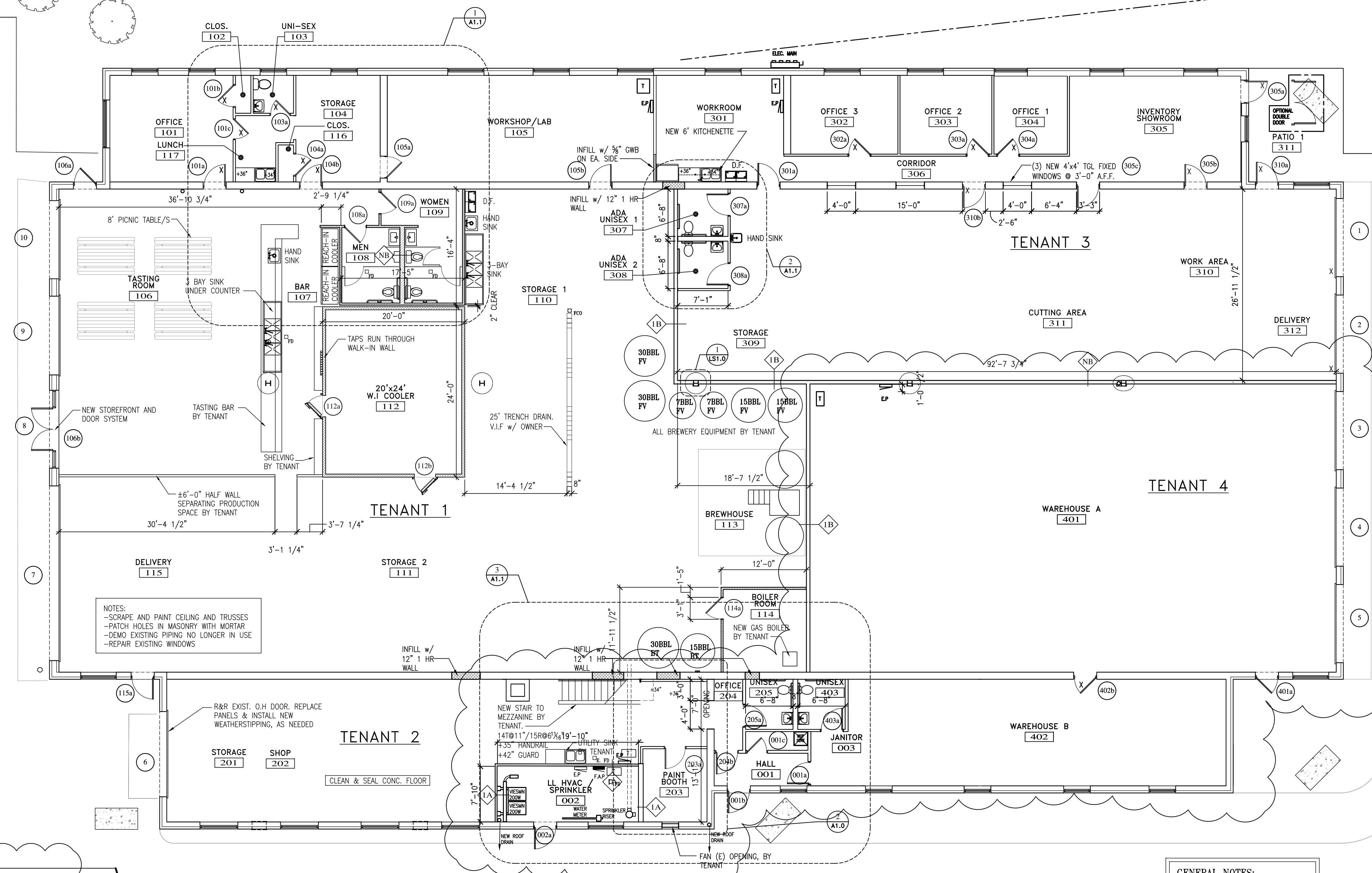


**Westfield Building**  
 17 Westfield Street  
 Portland, ME. 04102

JOB: 15162

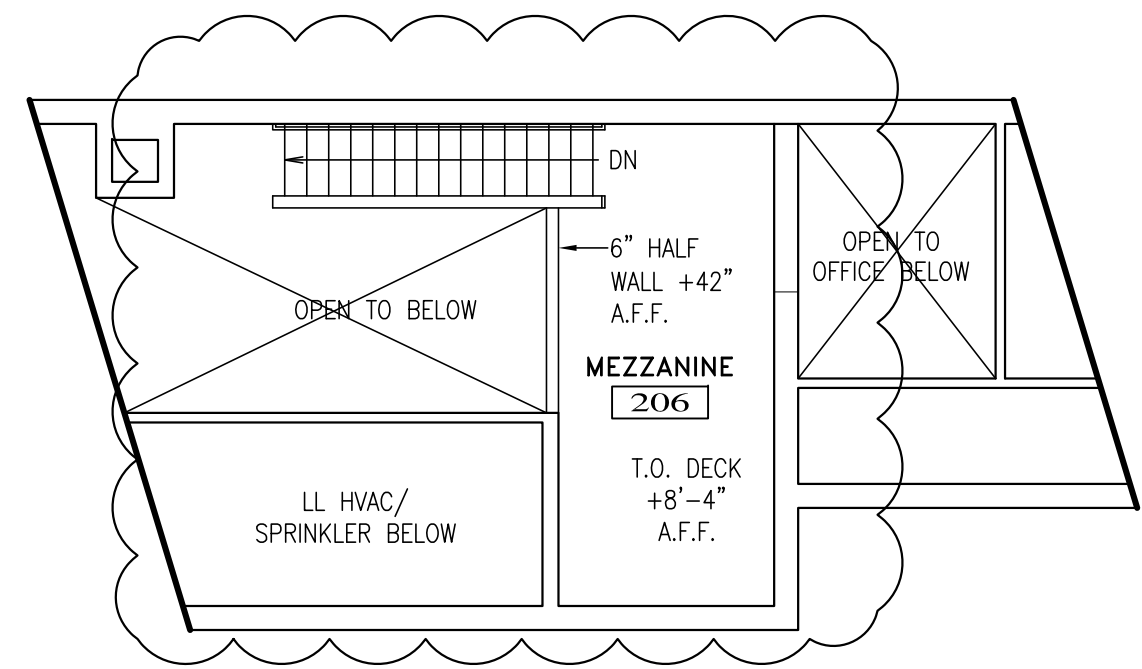
ISSUE DATE	
PRELIM	08-18-15
PLANNING	1-19-16
CD's	1-27-15
REV. 1	2-4-16
REV. 2	5-6-16
PRINT	5-12-16

ARCHITECTURAL FLOOR PLAN  
**A1.0**



NOTES:  
 -SCRAPE AND PAINT CEILING AND TRUSSES  
 -PATCH HOLES IN MASONRY WITH MORTAR  
 -DEMO EXISTING PIPING NO LONGER IN USE  
 -REPAIR EXISTING WINDOWS

GENERAL NOTES:  
 G.C. TO REFER TO 'EXHIBIT 'B'  
 PRIOR TO CONSTRUCTION.



2 TENANT 2 MEZZANINE PLAN  
 A1.0 SCALE: 1/8" = 1'-0"

FLOOR PLAN  
 SCALE: 1/8" = 1'-0"

5-12-16