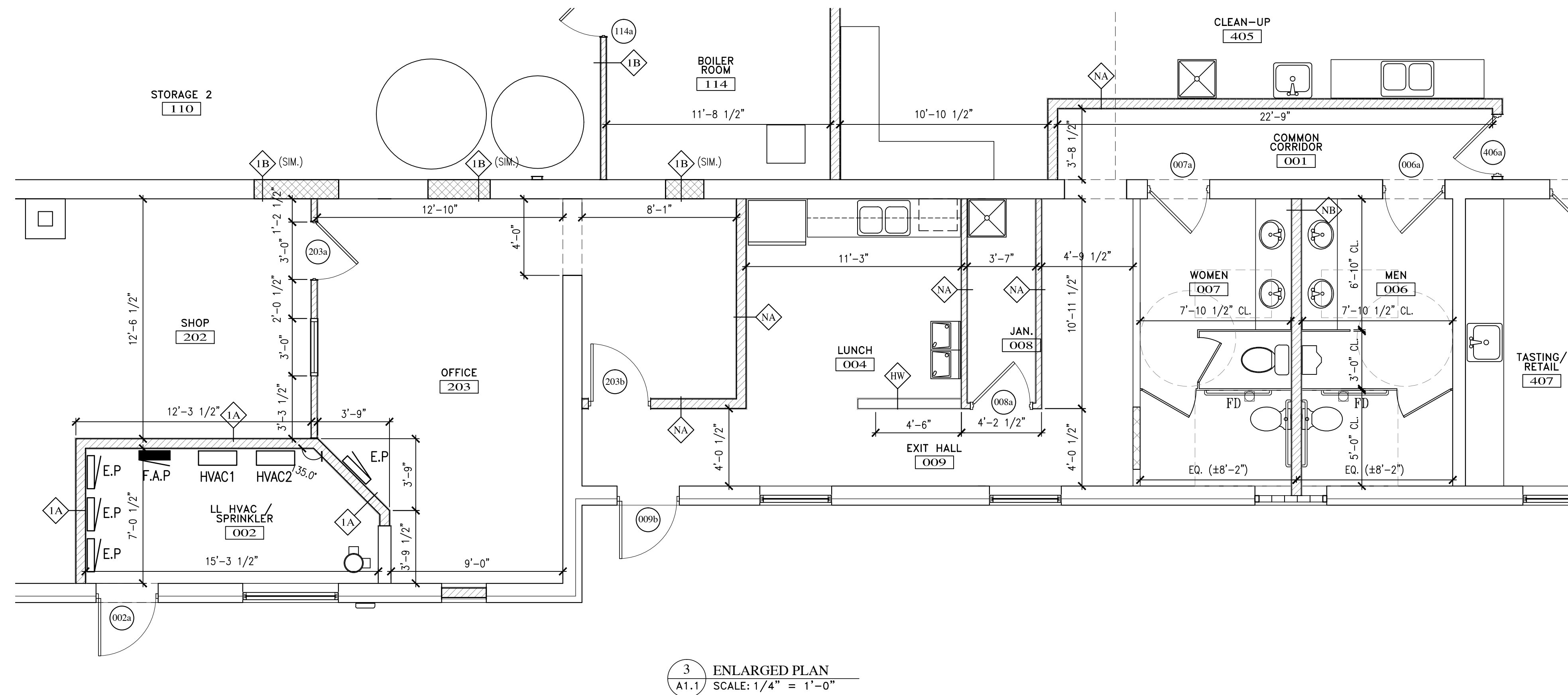
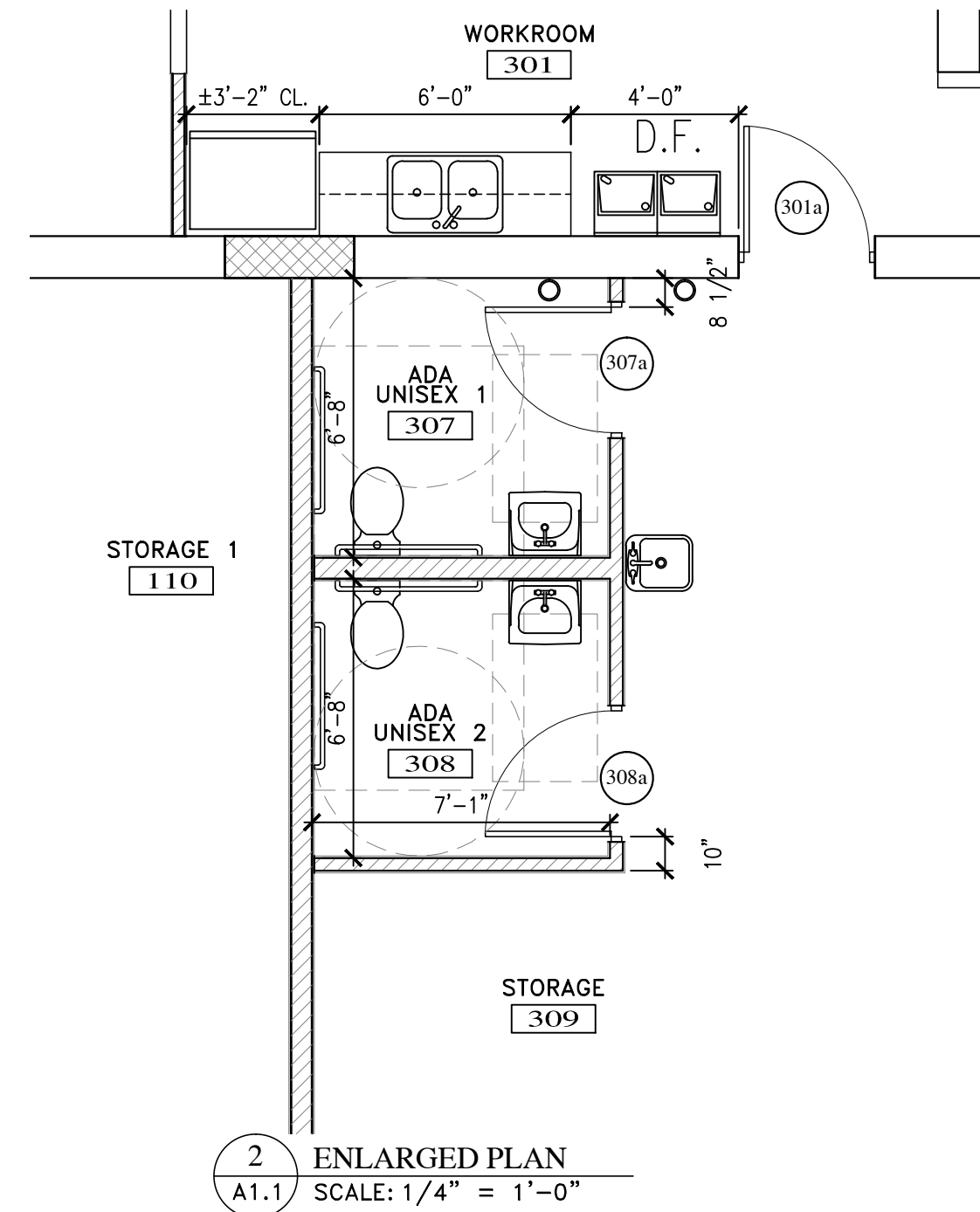
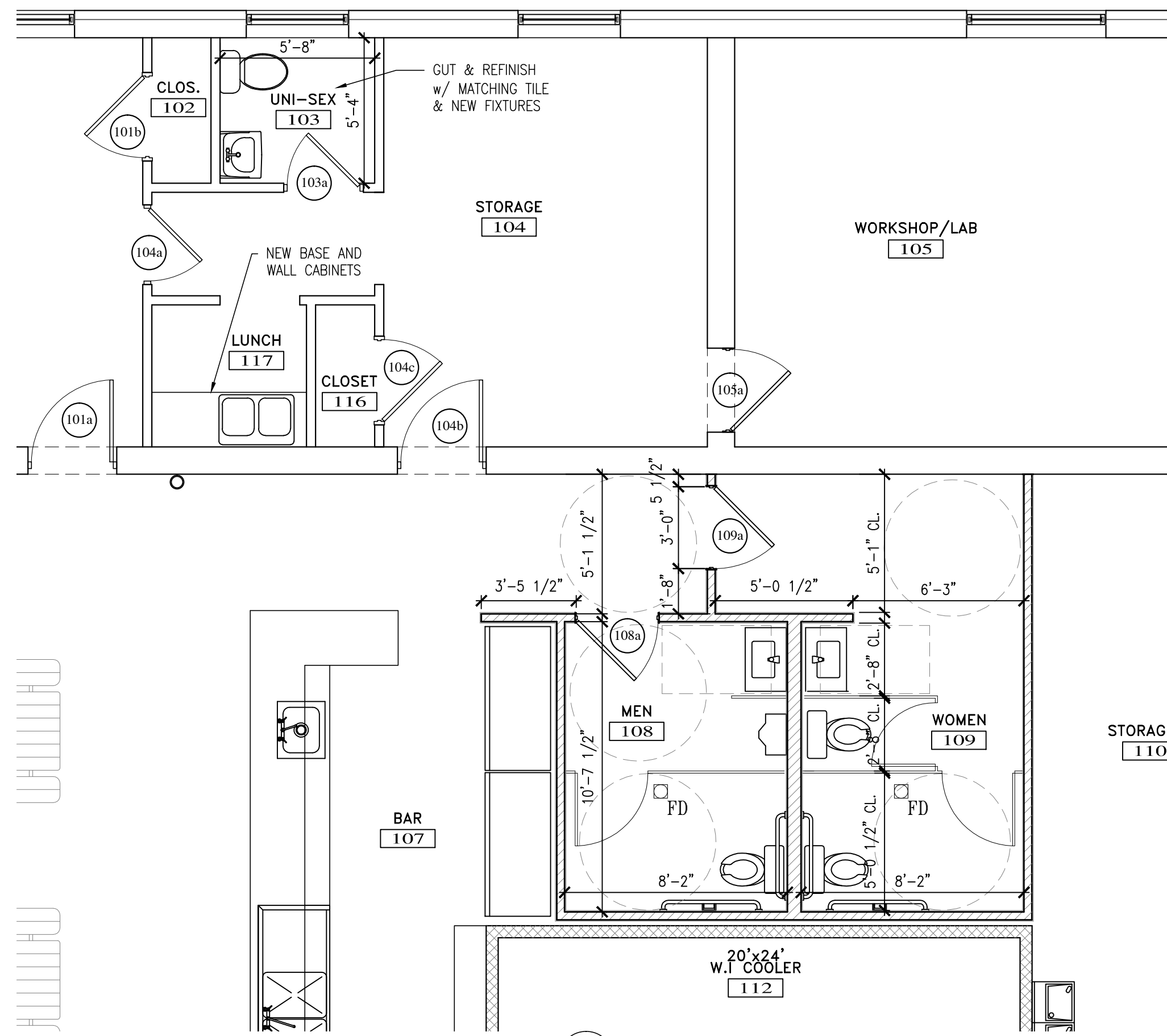


**ABBREVIATIONS:**

- LP = ADA LOOP PULL
- L = ADA LEVER
- LL = ADA LOCKING LEVER
- CL = DOOR CLOSER
- CB = CRASH BAR
- TTDB = THUMB TURN DEAD BOLT
- DS = DOOR STOP
- ST = WALL STOP
- PP = PUSH PLATE
- KP = KICK PLATE
- VP = VISION PANEL
- WS = WEATHER STRIPPING SYSTEM
- xS = (x = #) SHELVES

DOOR NO.	LOCATION	DOOR				REMARKS		
		TYPE	MAT.	SIZE			HARDWARE	
				W	H			T
002A	LL HVAC / SPRINKLER	NEW	METAL INSUL	3-0	7-0	1 1/2"	L, CL, WS	PEEP, PAINT
006A	MEN	NEW SC	BIRCH VENEER	3-0	6-8	1 3/8"	L, CL, KP	STAIN, POLYURETHANE
007A	WOMEN	NEW SC	BIRCH VENEER	3-0	6-8	1 3/8"	L, CL, KP	STAIN, POLYURETHANE
008A	JANITOR	NEW SC	BIRCH VENEER	3-0	6-8	1 3/8"	L, TTDB, ST	STAIN, POLYURETHANE
009B	EXIT HALL	NEW	METAL INSUL	3-0	7-0	1 1/2"	L, CL, WS	PAINT, PEEP
101A	OFFICE	EXIST.	METAL	3-0	7-0	1 1/2"	NEW L	CLEAN, PRIME, PAINT & LUBE
101B	OFFICE	EXIST.	METAL	3-0	7-0	1 1/2"	NEW L	CLEAN, PRIME, PAINT & LUBE
103A	UNISEX	EXIST.	METAL	2-8	6-8	1 3/8"	NEW L	CLEAN, PRIME, PAINT & LUBE
104A	STORAGE	EXIST.	METAL	2-8	6-8	1 3/8"	NEW L, ST	CLEAN, PRIME, PAINT & LUBE
104B	STORAGE	EXIST.	METAL	3-0	7-0	1 1/2"	NEW L	PAINT
104C	STORAGE	EXIST.	METAL	3-0	6-8	1 3/8"	NEW L	PAINT
105A	WORKSHOP/LAB	NEW	METAL	3-0	6-8	1 3/8"	L, TTDB, ST	PAINT
106A	TASTING ROOM	NEW	METAL INSUL	3-0	7-0	1 1/2"	CB, CL, WS, LP	PEEP, PAINT
106B	TASTING ROOM	NEW 4" STRFRNT	ALUM/GLASS	2)3-0	7-0	1 1/2"	CB, CL, WS, LP	FULL TGL, CLEAR ANODIZED ALUM
108A	MEN	NW SC	BIRCH VENEER	3-0	6-8	1 3/8"	CL, LP, KP	STAIN, POLYURETHANE
109A	WOMEN	NW SC	BIRCH VENEER	3-0	6-8	1 3/8"	CL, LP, KP	STAIN, POLYURETHANE
112A	COOLER	SPECIAL	ALUM INSUL	3-0	6-8	±4"	CL, PANC	LOCKOUT PROTECTION BY MANUF'R
112B	COOLER	SPECIAL	ALUM INSUL	3-0	6-8	±4"	CL, PANC	LOCKOUT PROTECTION BY MANUF'R
114A	BOILER ROOM	NEW	METAL	3-0	6-8	1 1/2"	L, TTDB	45 MINUTE, PAINT
115A	DELIVERY	NEW	METAL INSUL	3-0	7-0	1 1/2"	CB, CL, WS, LP	PEEP, PAINT
203A	OFFICE	NEW SC	BIRCH VENEER	3-0	6-8	1 3/8"	L, ST	STAIN, POLYURETHANE
203B	OFFICE	NEW SC	BIRCH VENEER	3-0	6-8	1 3/8"	L, CL, KP	STAIN, POLYURETHANE, PEEP
301A	WORKROOM	NEW 1/2 TGL	BIRCH VENEER	3-0	6-8	1 3/8"	L, ST	STAIN, POLYURETHANE
302A	OFFICE 3	EXIST.	BIRCH VENEER	3-0	6-8	1 3/8"	L	POLYURETHANE, LUBE
303A	OFFICE 2	EXIST.	BIRCH VENEER	3-0	6-8	1 3/8"	L, ST	POLYURETHANE, LUBE
304A	OFFICE 1	EXIST.	BIRCH VENEER	3-0	6-8	1 3/8"	L, ST	POLYURETHANE, LUBE
305A	INVENTORY	EXIST.	ALUM TGL	3-0	7-0	1 1/2"	LP, CL, TTDB, WS	REMOVE BLADE PULL, LUBRICATE
305B	INVENTORY	EXIST.	METAL W/ VP	3-0	6-10	1 3/8"	L, EXISTING CL	CLEAN, PRIME, PAINT & LUBE
307A	ADA UNISEX 1	NEW SC	BIRCH VENEER	3-0	6-8	1 3/8"	L, CL, KP	STAIN, POLYURETHANE
308A	ADA UNISEX 2	NEW SC	BIRCH VENEER	3-0	6-8	1 3/8"	L, CL, KP	STAIN, POLYURETHANE
310A	WORK AREA	NEW	METAL INSUL	3-0	7-0	1 1/2"	L, CL, WS	PAINT
310B	CUTTING AREA	NEW 1/2 TGL	BIRCH VENEER	3-0	7-0	1 3/8"	L, CL	STAIN, POLYURETHANE
401A	OFFICE	NEW SC	BIRCH VENEER	3-0	6-8	1 3/8"	L, ST	STAIN, POLYURETHANE
406A	ROASTING	NEW SC	BIRCH VENEER	3-0	6-8	1 3/8"	LL, KP, CL	STAIN, POLYURETHANE
406B	ROASTING	NEW	METAL INSUL	3-0	7-0	1 1/2"	L, CL, WS	PAINT
407A	TASTING	NEW 4" STRFRNT	ALUM/GLASS	2)3-0	7-0	1 1/2"	LP TTDB, CL, WS	FULL TGL, CLEAR ANODIZED ALUM
407B	TASTING	EXISTING 1/2 GL	METAL	3-0	7-0	1 1/2"	L	CLEAN, PRIME, PAINT, LUBE, REMOVE DB



**Westfield Building**  
 17 Westfield Street

JOB: 15162

ISSUE DATE

PRELIM	08-18
P BOARD	-
SFMO	-
CDs	-
REV. 1	-
PRINT	01-08

ENLARGED PLANS & DOOR SCHEDULE  
**A1.1**