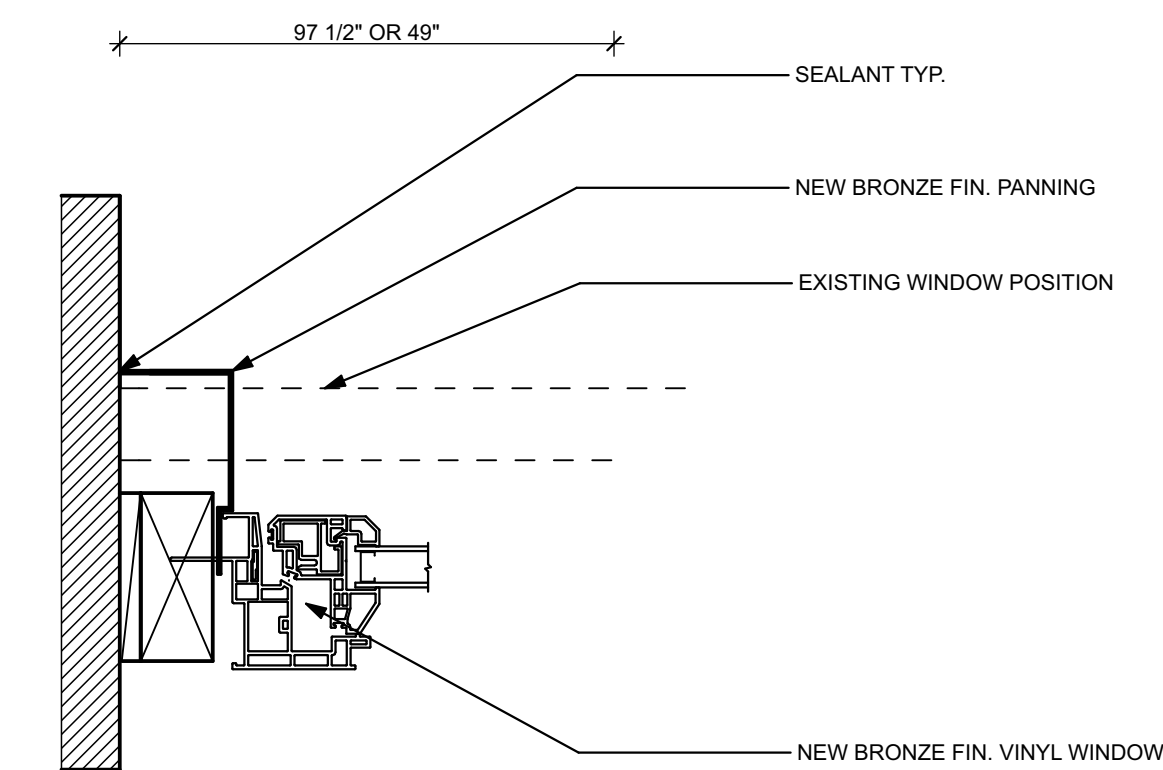
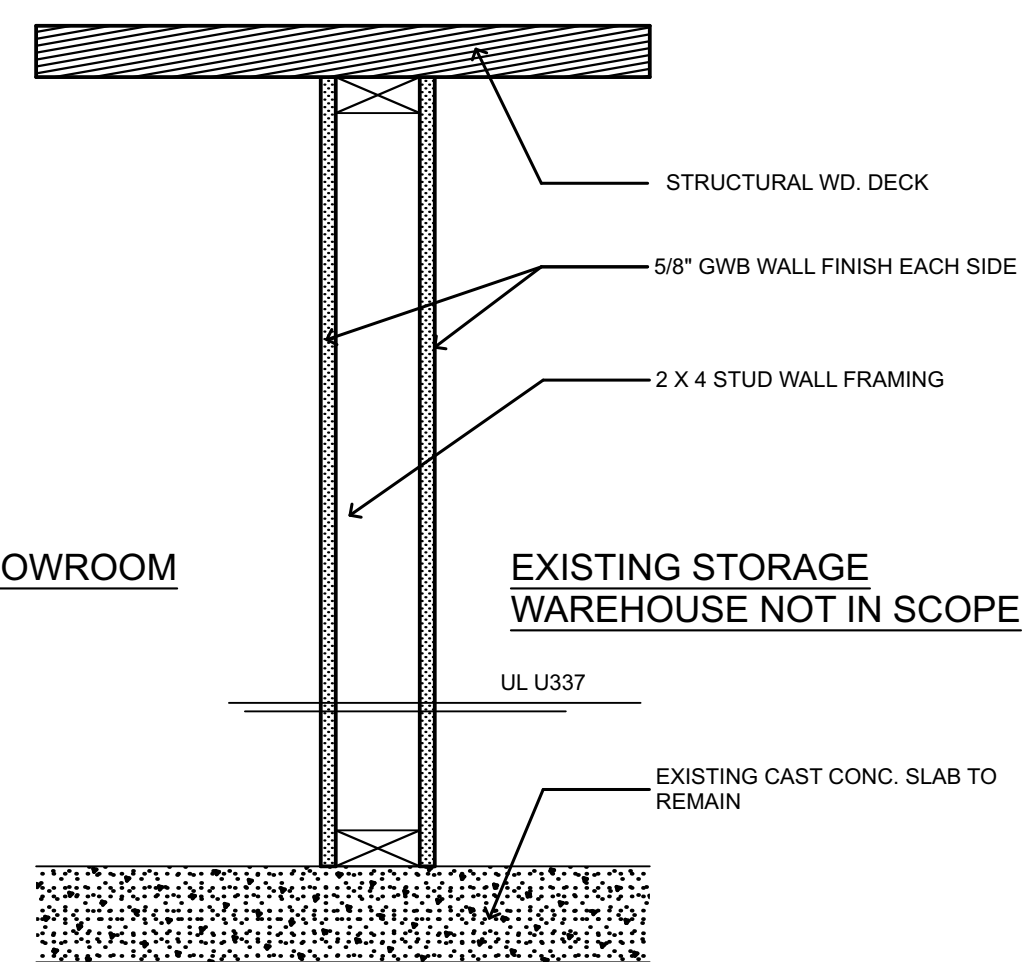


HEAD AND SILL DETAILS

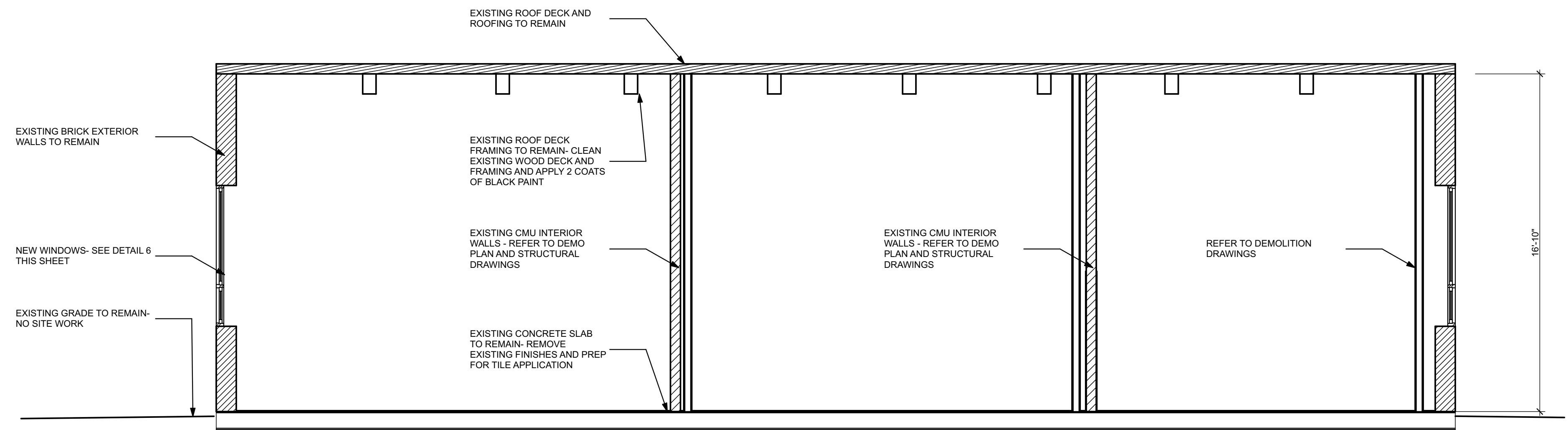


JAMB DETAIL

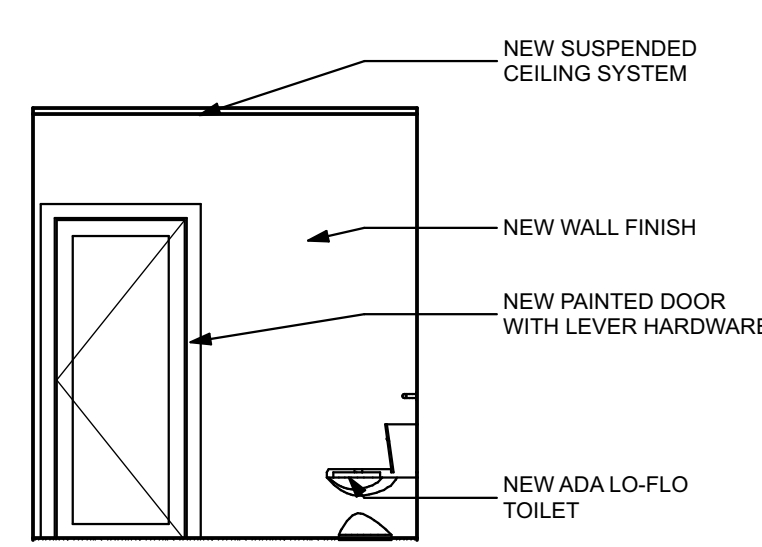
6 WINDOW DETAILS
A3.1 SCALE: 3\"/>



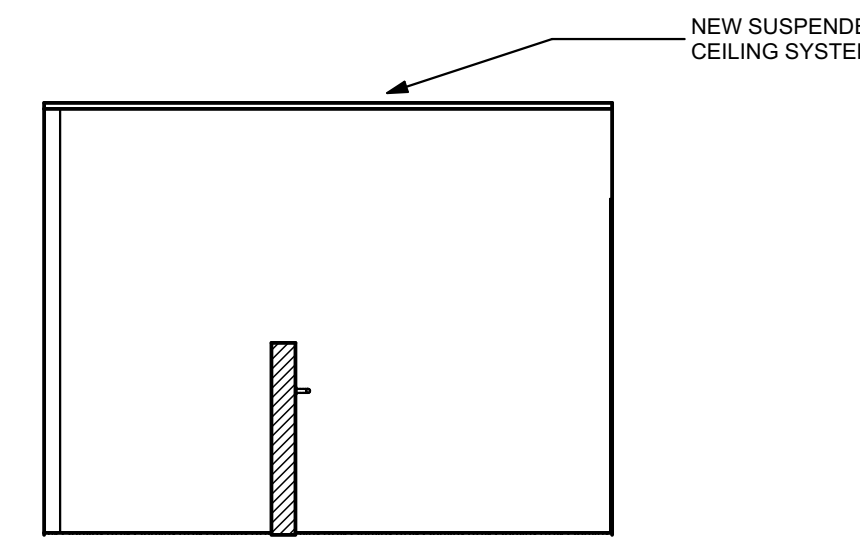
7 1 HR. RATED WALL DETAIL
A3.1 SCALE: 1 1/2\"/>



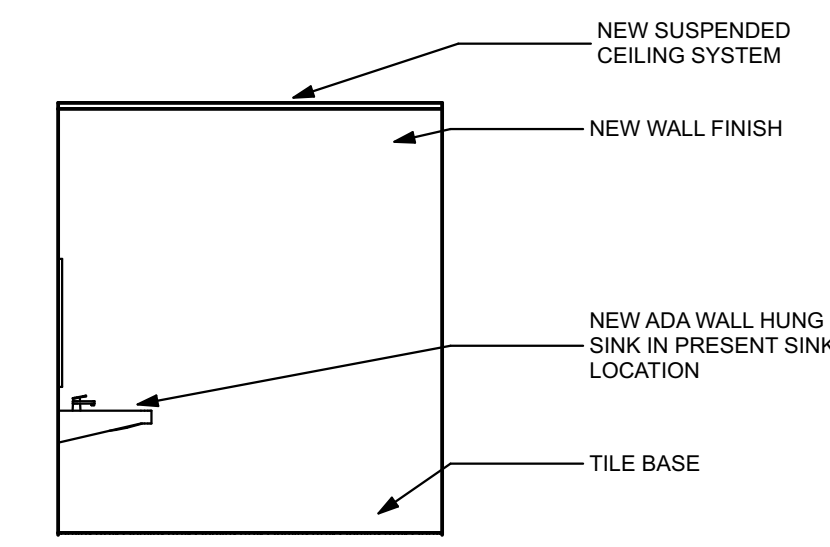
1 SECTION
A3.1 SCALE: 1/4\"/>



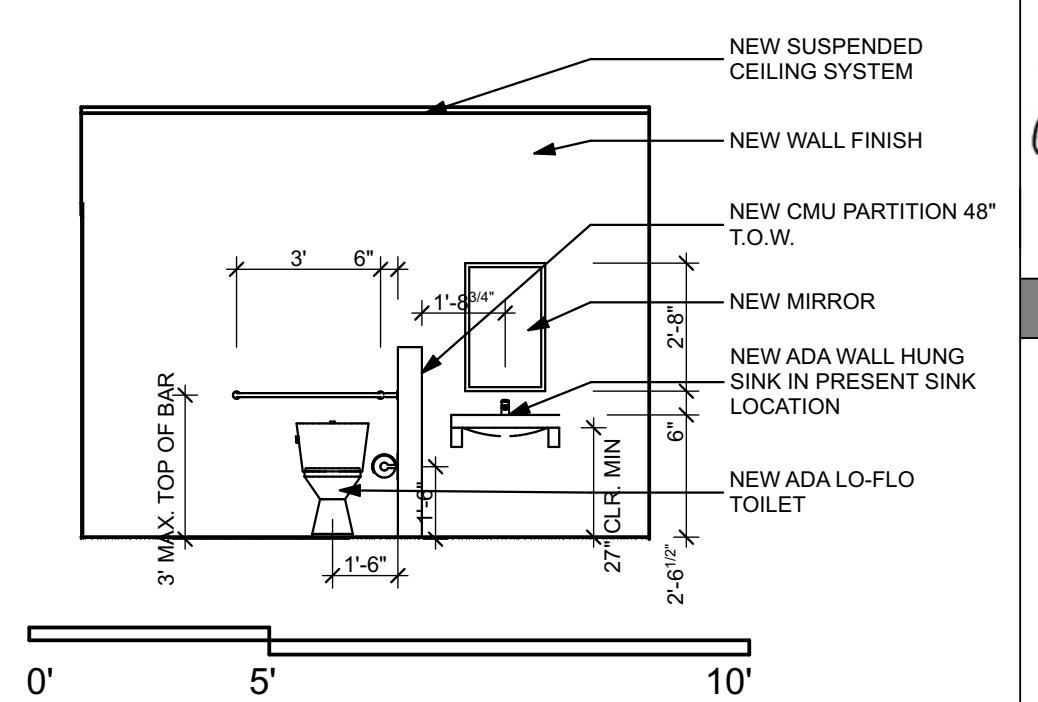
5 ROOM ELEVATION
A3.1 SCALE: 1/4\"/>



4 ROOM ELEVATION
A3.1 SCALE: 1/4\"/>

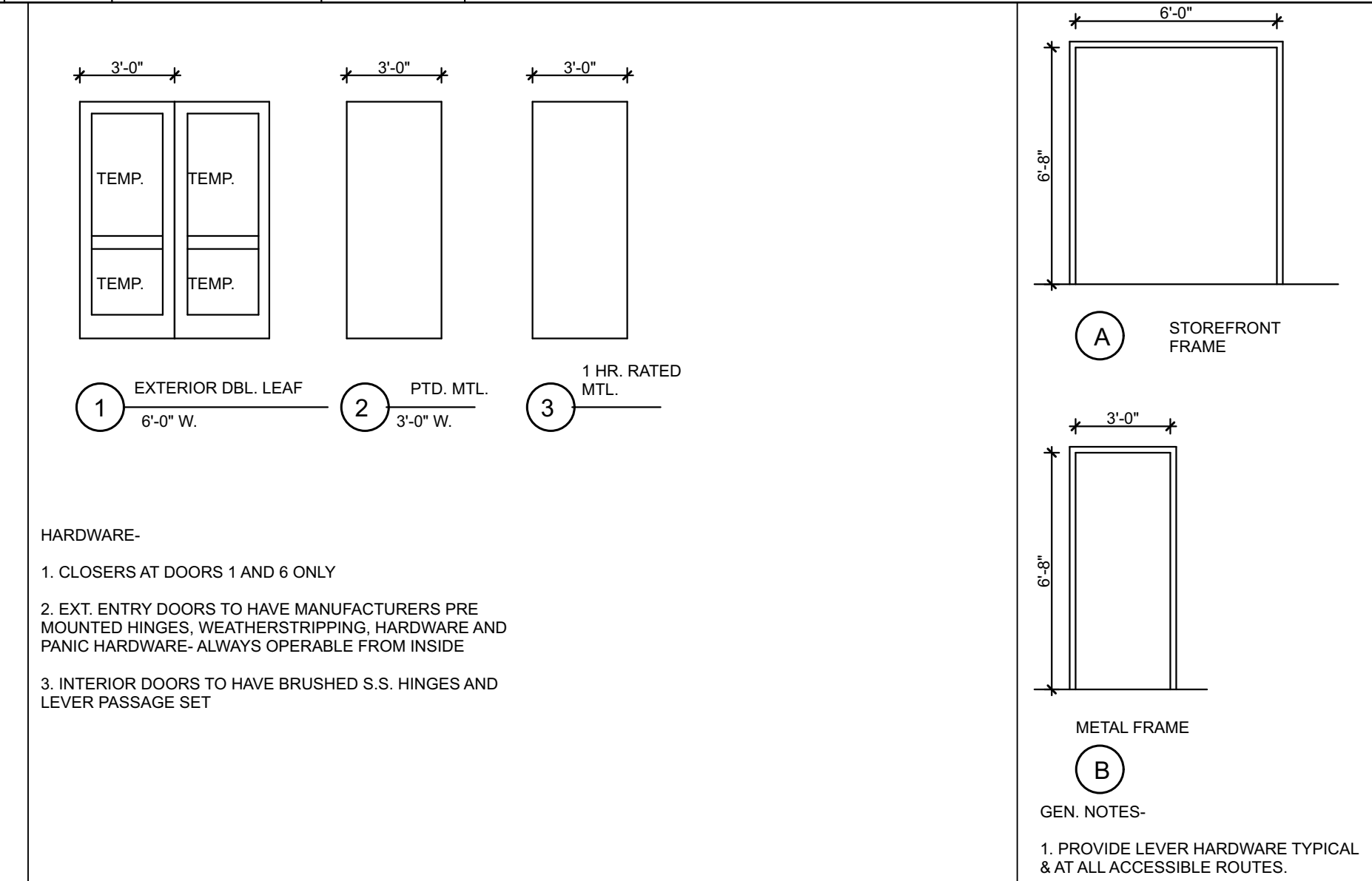


3 ROOM ELEVATION
A3.1 SCALE: 1/4\"/>



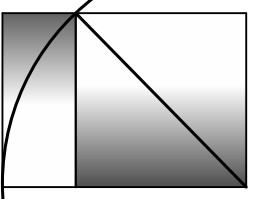
2 ROOM ELEVATION
A3.1 SCALE: 1/4\"/>

DOOR SCHEDULE									
DOOR NO.	FUNCTION	DOOR				FRAME		FIRE RATING	NOTES
		TYPE	WIDTH	HEIGHT	MAT'L	TYPE	MATERIAL		
1	EGRESS	1	6'-0"	6'-8"	ALUM.	A	ALUM.	N.A.	EGRESS DOOR WITH PANIC HARDWARE & CLOSER
2	INT.	2	3'-0"	6'-8"	MTL.	B	MTL.	N.A.	BATHROOM ACCESS W/ PUSH PLATE AND HANDSET ONLY- NO LOCK
3	INT.	2	3'-0"	6'-8"	MTL.	B	MTL.	N.A.	HC BATHROOM ACCESS W/ LEVER HARDWARE, PRIVACY LOCK W/ INT. ALWAYS UN LOCKED, NO CLOSER
4	INT.	2	3'-0"	6'-8"	MTL.	B	MTL.	N.A.	BATHROOM ACCESS W/ PUSH PLATE AND HANDSET ONLY- NO LOCK
5	INT.	2	3'-0"	6'-8"	MTL.	B	MTL.	N.A.	BATHROOM ACCESS W/ PUSH PLATE AND HANDSET ONLY- NO LOCK
6	INT.	3	3'-0"	6'-8"	MTL.	B	MTL.	1 HR.	1 HR. RATED W/ PUSH PLATE AND HANDSET ONLY- NO LOCK, CLOSER



- HARDWARE-
- CLOSERS AT DOORS 1 AND 6 ONLY
 - EXT. ENTRY DOORS TO HAVE MANUFACTURERS PRE MOUNTED HINGES, WEATHERSTRIPPING, HARDWARE AND PANIC HARDWARE- ALWAYS OPERABLE FROM INSIDE
 - INTERIOR DOORS TO HAVE BRUSHED S.S. HINGES AND LEVER PASSAGE SET

GEN. NOTES-
1. PROVIDE LEVER HARDWARE TYPICAL & AT ALL ACCESSIBLE ROUTES.



DESCRIPTION
DATE
MARK

DATE: PERMIT 7.25.16
CHECKED BY: JD
DRAWN BY: JD/CC
JOB: FITZ-2016
SHEET TITLE: