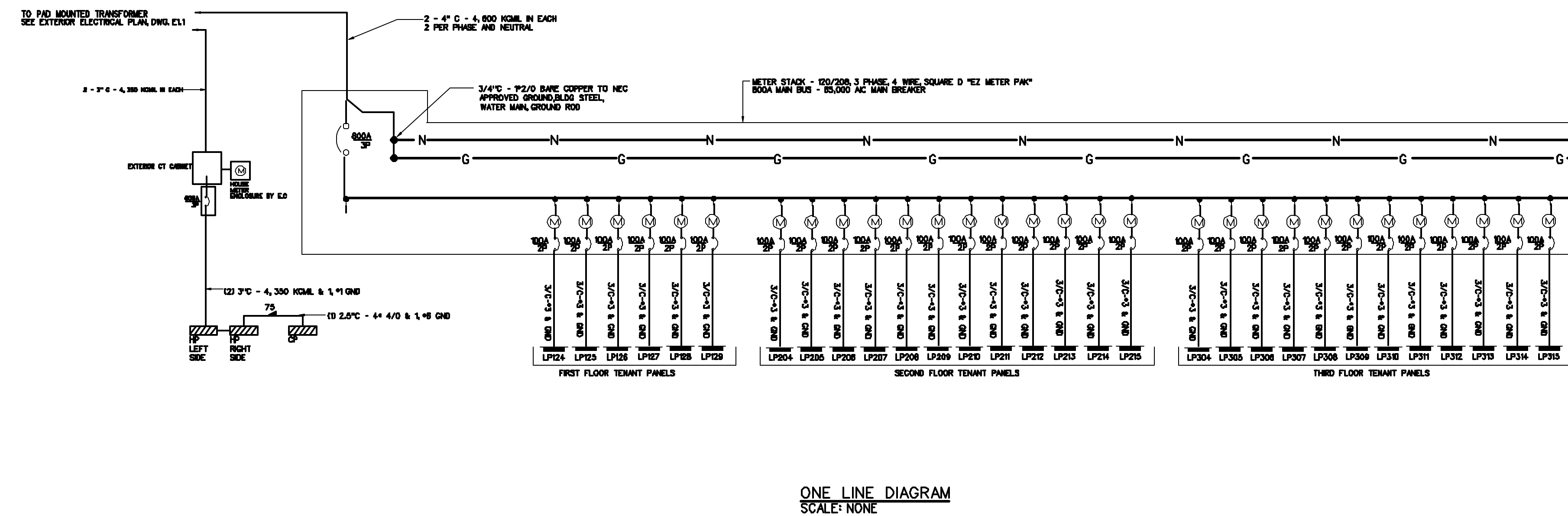
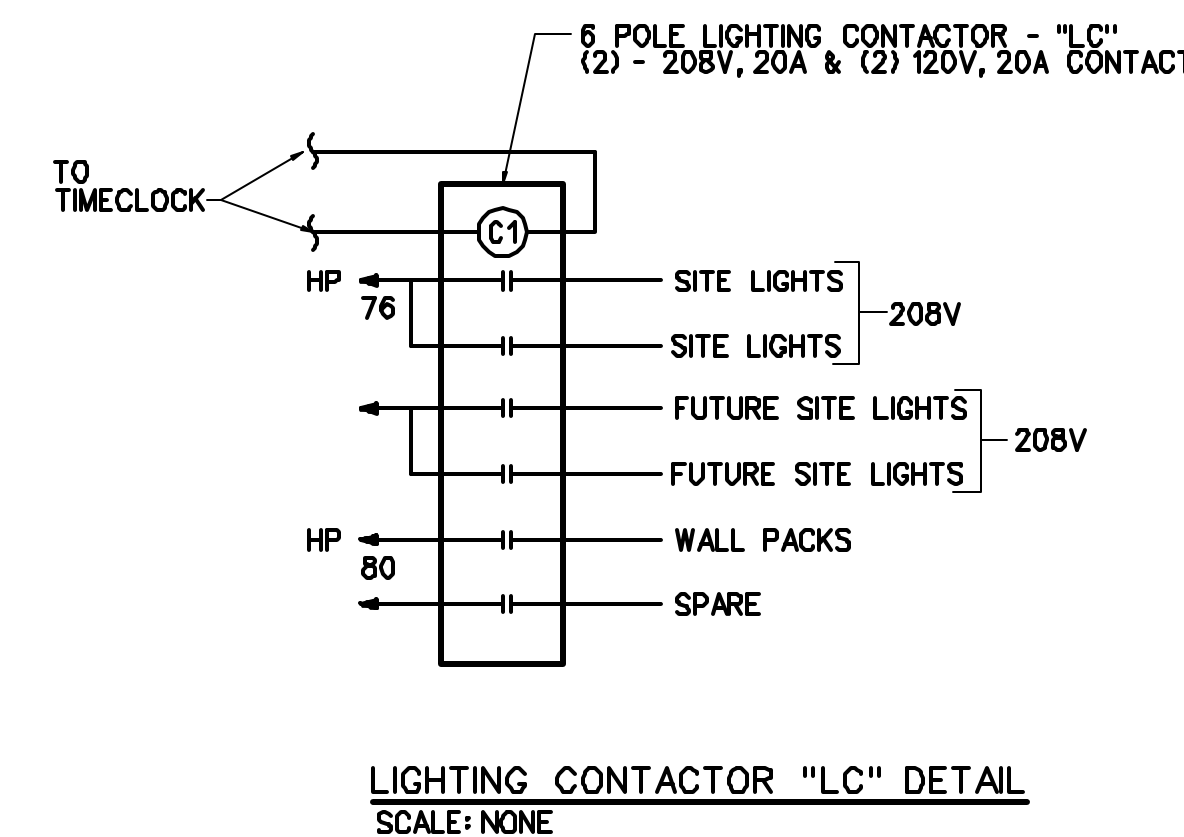
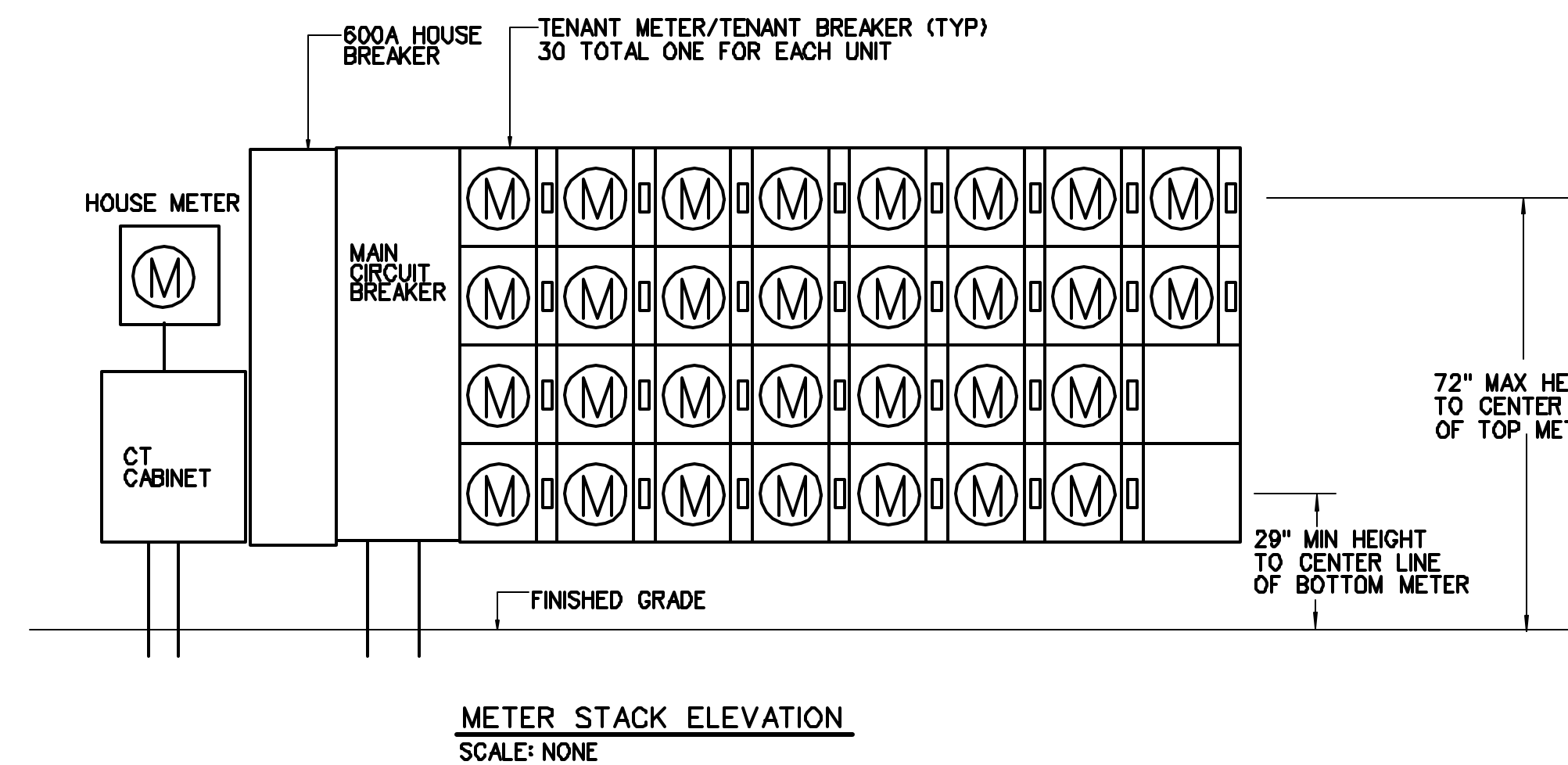


LIGHTING FIXTURE SCHEDULE

TYPE	DESCRIPTION	LAMPS QUANTITY & TYPE	REMARKS
A	KENALL MR17FL-S-MW-42P-120	2 - 42W TRIPLE TUBE	CEILING SURFACE.
B	COLUMBIA *WC4-332-3EB8LH-120	2 - F32T8/SPX35	SURFACE MOUNTED WRAPAROUND
C	PROGRESS *P7105-69 (120V)	1 - 100W A-LAMP	WALL MOUNT. VERIFY MOUNTING HEIGHT WITH ARCHITECT
D	PROGRESS *P6692-21 (120V)	1 - 32W TT CF	CEILING RECESSED
E	ATLIGHT *PNL-R-U	LEDS FURNISHED WITH FIXTURE	UNIVERSAL CEILING, END, WALL MOUNT. SINGLE OR DOUBLE FACE.
F	NOT USED		
G	PROGRESS *P7007-30EB (120V)	1 - F17T8	MOUNT UNDERCABINET, 2" FROM WALL
H	PRESCOLITE *WB4	1 - 75W A-19	WALL MOUNT IN ELEVATOR PIT
J	NOT USED		
K	KENALL MR13FL-S-MW-13	2 - 13W CF	SURFACE MOUNTED
L	PROGRESS *P7094-30EB	2 - F17T8/SPX35	WALL MOUNT ABOVE MIRROR
M	LITHONIA *TWAC 70M 120	1 - 70W MH	WALL PACK - MOUNT AT 9'-0" AFG TO BOTTOM OF FIXTURE
M1	LITHONIA *TWAC 70M 120 PE	1 - 70W MH	WALL PACK - MOUNT AT 9'-0" AFG TO BOTTOM OF FIXTURE - W/ BUTTON TYPE PHOTOCELL
N	COLUMBIA *P224-332SM-LD32-S-EB8LH120	3 - F32T8/SPX35	SURFACE MOUNTED PARABOLIC - W/ 1, 1 LAMP & 1, 2 LAMP ELECTRONIC BALLAST
P	KENALL M013ED-MW-50M-120	1 - 50W MH	WALL MOUNT - SECOND FLOOR BALCONY
Q	PROGRESS *5088-10	1-60W A-LAMP	PENDANT MOUNTED - COMMUNITY ROOM COUNTER
R	COLUMBIA *CS4-232-EB8LH120	2 - F32T8/SPX35	SURFACE MOUNTED
S	EXTERIOR FLOOD W/MOTION DETECTOR	2 100W par 38	WALL MOUNTED FLOOD - MOUNT AT 9'-0" AFG TO BOTTOM OF FIXTURE - ON MOTION SENSOR AIM AT THE GROUND

SYMBOL LEGEND

- LOAD CENTER, 120/208V, 1PHS, 3WIRE
- POWER PANEL 120/208, 3PHS, 4WIRE
- ELECTRIC MOTOR DRIVEN EQUIPMENT
- UNFUSED DISCONNECT SWITCH - 250 VOLT SIZE & NO. POLES AS NOTED.
- COMBINATION CIRCUIT BREAKER & MAGNETIC MOTOR STARTER - NEMA SIZE 1 W/4 AUX. CONTACTS AND HAND-OFF-AUTO SWITCH W/RED POWER ON PILOT LIGHT.
- MANUAL MOTOR STARTER SWITCH WITH THERMAL OVERLOAD DEVICE, MOUNTED AT UNIT
- JUNCTION BOX - "H" DENOTES RANGE HOOD, "DS" DENOTES DISPOSAL, "DW" DENOTES DISHWASHER
- LIGHTING FIXTURES- CAPITAL LETTERS DENOTE TYPE AS PER LIGHTING FIXTURE SCHEDULE. LOWER CASE LETTERS INDICATE SWITCH CONTROL- "ob" INDICATES INBOARD LAMPS CONTROLLED BY SWITCH "b"-OUTBOARD CONTROLLED BY SWITCH "d" DIAGONAL INDICATES NIGHT LIGHT (UNSWITCHED)
- EXIT LIGHT FIXTURE-UNSWITCHED
- SELF CONTAINED EMERGENCY LIGHTING UNIT W/ 2 HEADS. PRESCOLITE *EMAX, 12 WATTS FOR 90 MIN. - UNSWITCHED
- RACEWAY & WIRING OR NM CABLE RUN CONCEALED IN WALLS/CEILINGS.
- RACEWAY & WIRING RUN EXPOSED
- RACEWAY & WIRING RUN CONCEALED UNDER FLOOR OR BELOW FINISH GRADE
- HOME RUN TO PANEL- ARROWS INDICATE QUANTITY OF CIRCUITS- NUMERALS DENOTE CIRCUIT NUMBERS
- BRANCH CIRCUIT WIRING SHALL CONSIST OF 2*12, 1*12G, 1/2"C UNLESS OTHERWISE NOTED. ASTERISK INDICATES #10 AWG FOR ALL CIRCUITS CONTAINED IN HOMERUN.
- SINGLE POLE SWITCH, 120 VOLT, 20 AMP, SPEC GRADE, GROUNDING TYPE, MOUNT 48" AFF. 3-3-WAY, 4-4-WAY, P-PILOT, WP-WEATHERPROOF. LOWER CASE LETTER INDICATES FIXTURE OR CONTROLLED LOAD. PILOT LIGHT SWITCHES SHALL BE PROVIDED W/ ENGRAVED NAMEPLATE IDENTIFYING USE.
- BURNER EMERGENCY SWITCH - RED WITH RED PLATE SURFACE MOUNT 72" AFF.
- DUPLEX RECEPTACLE- 20A, 125V SPEC GRADE GROUNDING TYPE AND MATCHING PLATE - MOUNT 24" AFF. "D" DENOTES DOUBLE DUPLEX
- DUPLEX RECEPTACLE- GROUND FAULT OUTLET 20A, 125V- WITH MATCHING PLATE FURNISHED W/ OUTLET. FLUSH MOUNTED 45" AFF EXCEPT AS NOTED.
- WEATHERPROOF
- FIRE ALARM HEAT DETECTOR, FIXED TEMPERATURE 135°F -120 VOLTS
- FIRE ALARM HEAT DETECTOR, FIXED TEMPERATURE 200°F
- SMOKE DETECTOR, PHOTOELECTRIC TYPE- SYSTEM CONNECTED
- APARTMENT SMOKE DETECTOR ANNUNCIATOR - AT RECEPTION
- FIRE ALARM CONTROL PANEL SURFACE MOUNT 78" AFF TO TOP
- FIRE ALARM PULL STATION MOUNT 48" AFF
- FIRE ALARM AUDIO/VISUAL, MOUNT 6'-8" AFF - "MH" DENOTES MINI HORN NUMERALS DENOTE CANDELA RATINGS
- FIRE ALARM VISUAL STROBE ONLY - MOUNT 6'-8" AFF NUMERALS DENOTE CANDELA RATINGS
- DIGITAL ALARM COMMUNICATOR TRANSMITTER
- INTERCOM PANEL IN UNIT
- INTERCOM PANEL
- ELECTRIC DOOR RELEASE
- SPRINKLER SYSTEM FLOW SWITCH
- SPRINKLER SYSTEM TAMPER SWITCH
- SPRINKLER SYSTEM PRESSURE SWITCH
- INSTALLED BY SPRINKLER CONTRACTOR - WIRED BY E.C.
- TELEPHONE OUTLET AND CTV OUTLET IN THE SAME SINGLE GANG BOX. E.C. SHALL PROVIDE CTV CABLE BACK TO SERVICE BOX AND T-4 PAIR TELEPHONE CABLE BACK TO TEL. BACKBOARD.
- TELEPHONE CONNECTION MOUNT 18" AFF - W/1-4 PAIR CABLE TO TEL. BACKBOARD. "W" INDICATES WALL MOUNTED AT 48"
- MOTION SENSOR
- MAGNETIC DOOR HOLDER - SUPPLIED BY G.C., WIRED BY E.C.
- KEY SWITCH FOR AUTOMATIC DOOR OPENER POWER
- COMBINATION VOICE/DATA JACK- (2)CAT 5E JACKS WITH MATCHING PLATE, RUN (2) CAT5E CABLES BACK TO ELECTRICAL ROOM (1) VOICE & (1) DATA. TERMINATE, LABEL AND TEST.



Owner:
**YC PORTLAND L.P.
C/O AVESTA**
307 CUMBERLAND AVE
PORTLAND, MAINE 04101
(207) 563-7777

Client:
YORK-CUMBERLAND
HOUSING DEVELOPMENT

LOGAN PLACE
PORTLAND, MAINE

Project No: 01409 SRO

Drawing Title:
**DETAILS, LEGEND
AND SCHEDULES**

Scale: AS NOTED
Date: JANUARY 14, 2004

Revisions:

Drawing Number:
E4.1