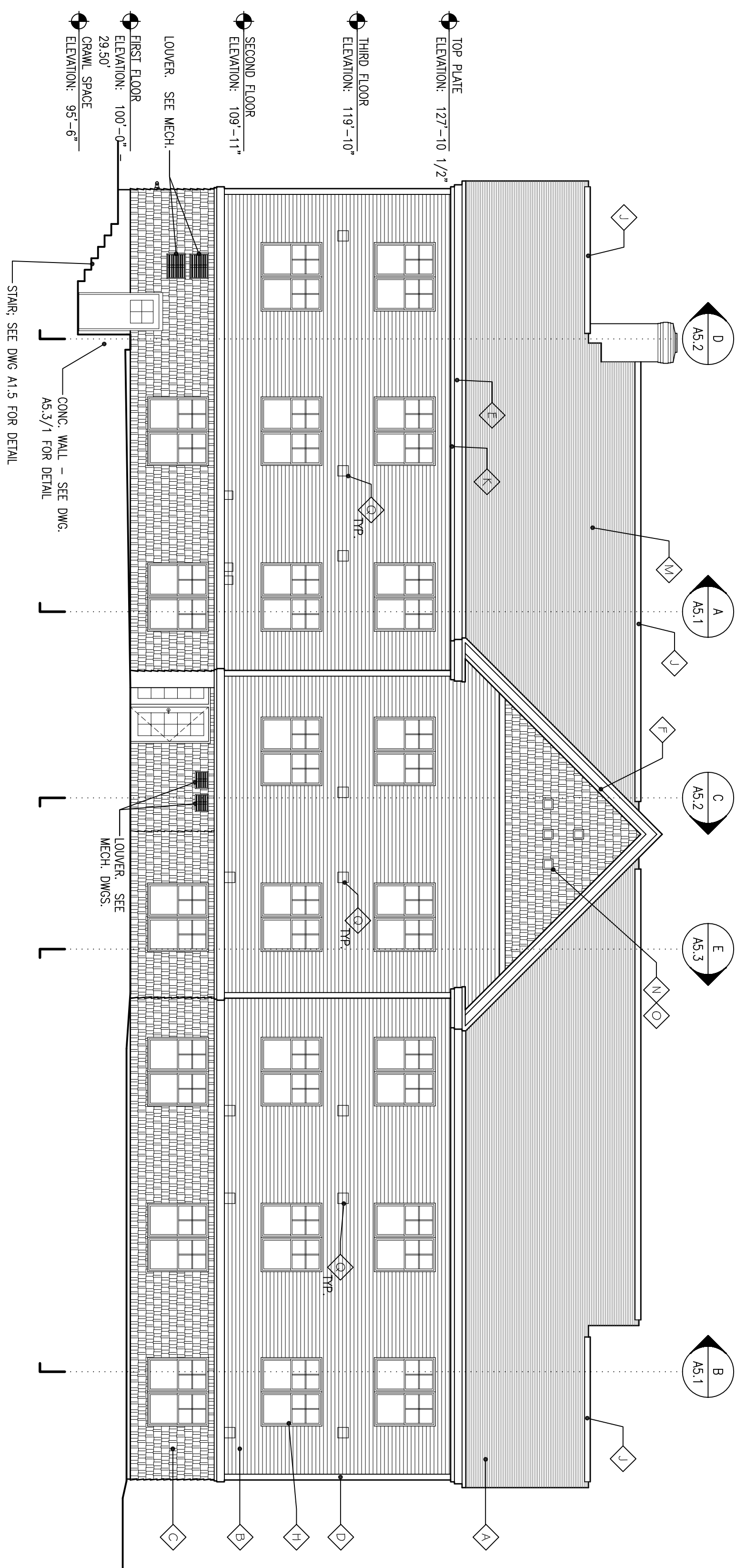
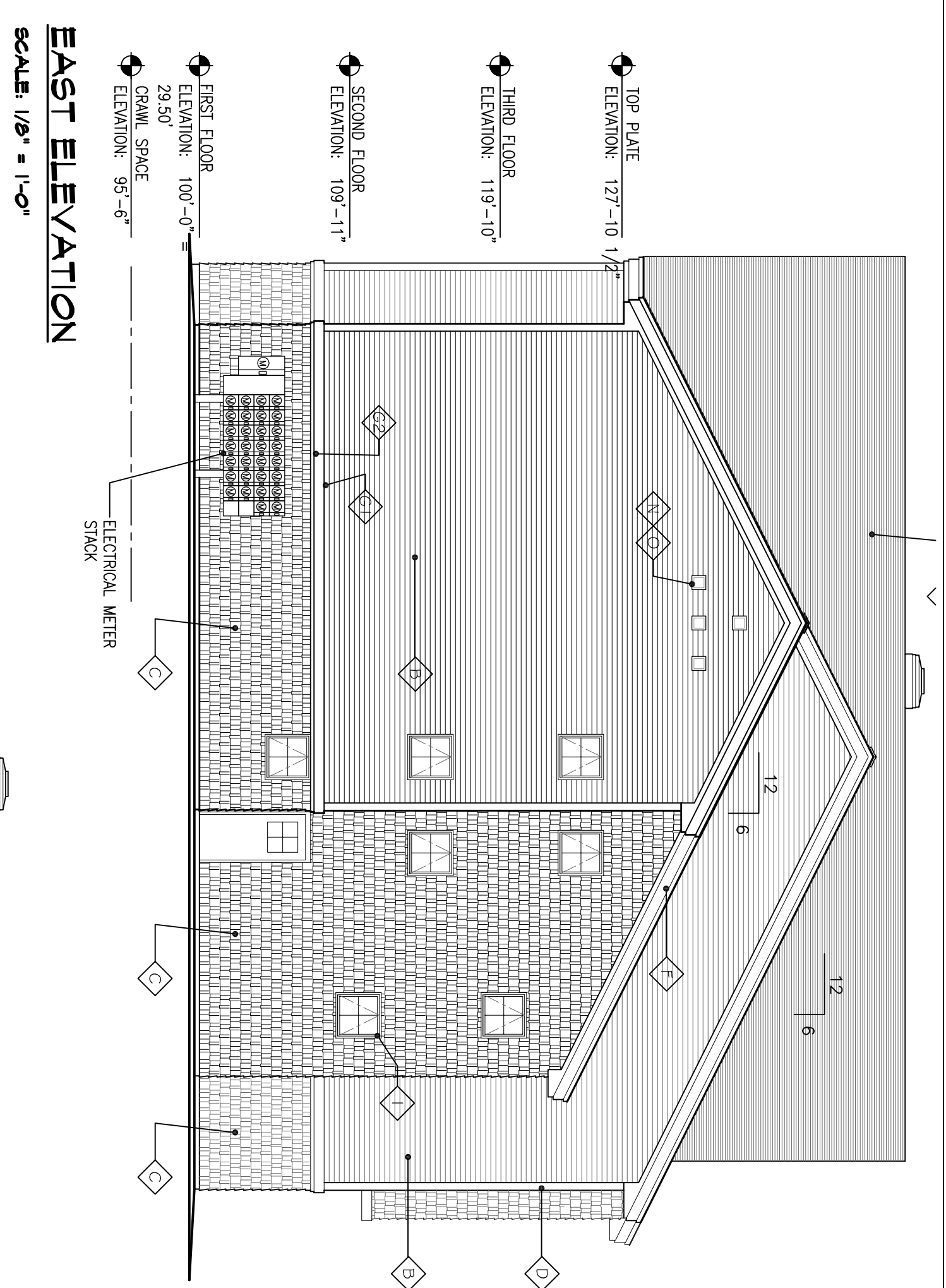


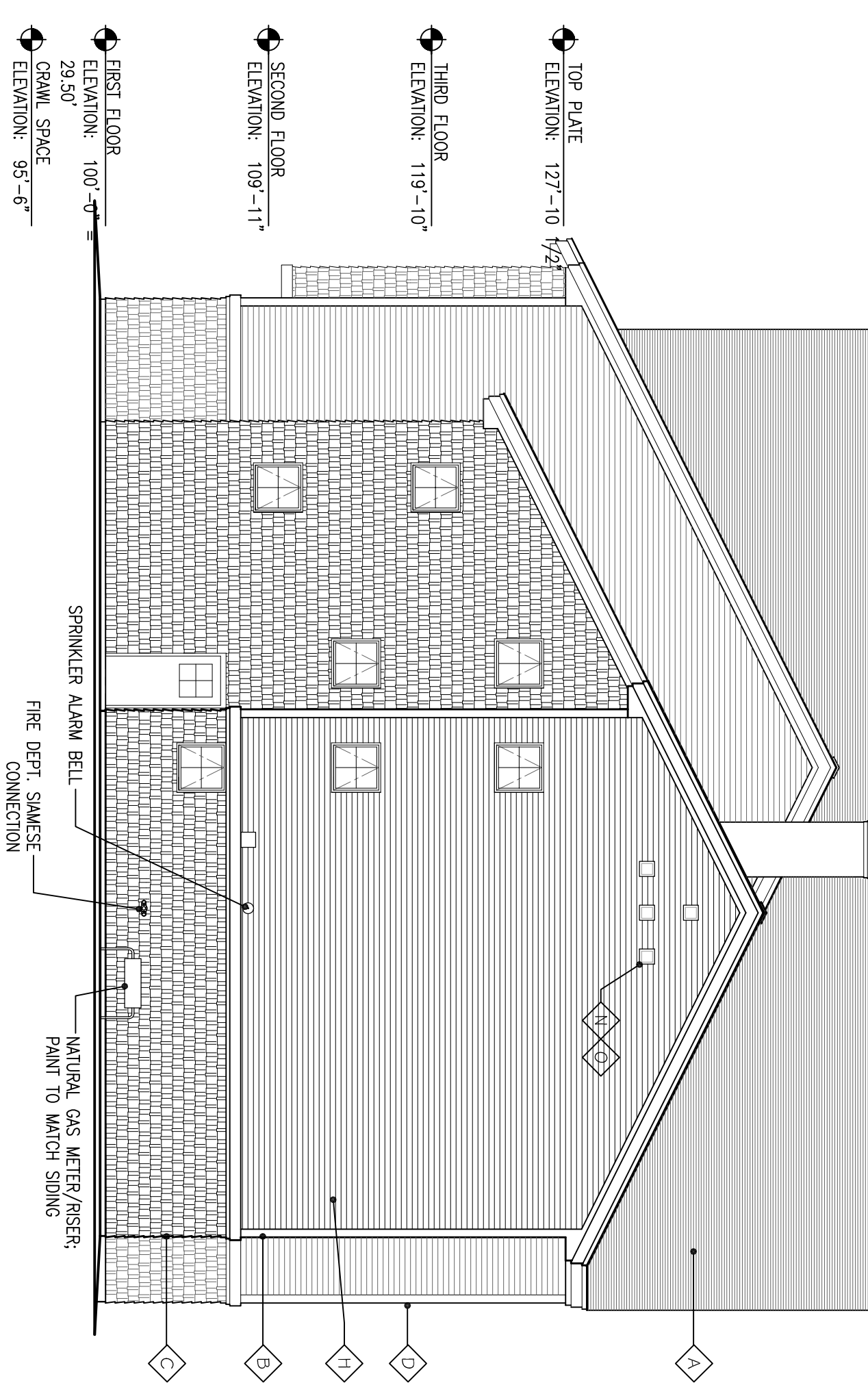
**NORTH ELEVATION**  
SCALE: 1/8" = 1'-0"



**SOUTH ELEVATION**  
SCALE: 1/8" = 1'-0"

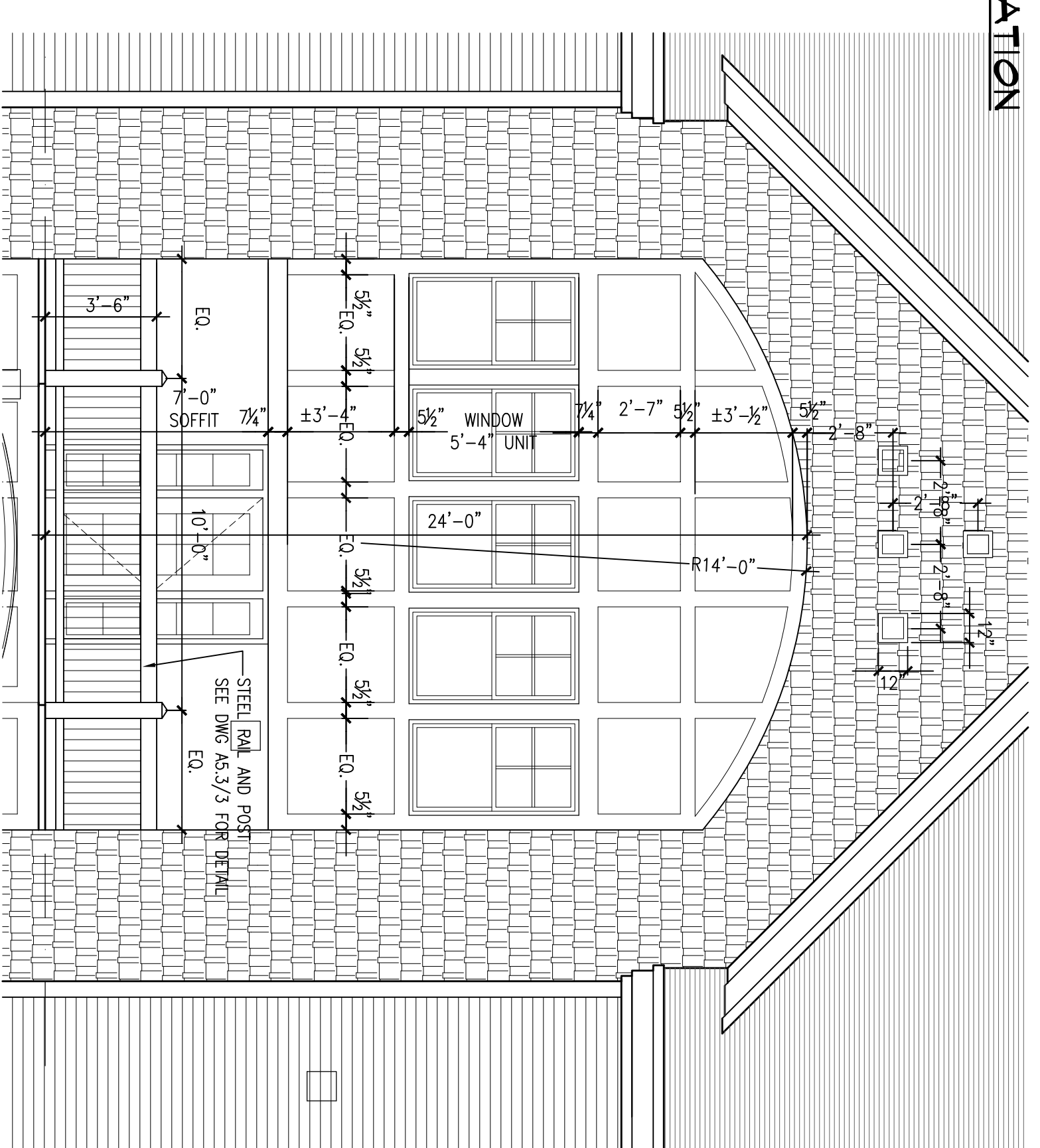


**EAST ELEVATION**  
SCALE: 1/8" = 1'-0"



**WEST ELEVATION**  
SCALE: 1/8" = 1'-0"

**FRONT ELEVATION PANEL**  
SCALE: 1/4" = 1'-0"



- EXTERIOR ELEVATION NOTES**
- A. 25 YEAR ORGANIC FELT BASE ASPHALT ROOF SHINGLES (TYP)
  - B. DOUBLE 4" VINYL CLAYBOARD SIDING, J CHANNELS AND INTERIOR CORNER POSTS TO MATCH SIDING COLOR - FINISH COLOR TO BE SELECTED.
  - C. DOUBLE 7" CAST POLYPROPYLENE SINGLE SIDING - CERTAINTED CEDAR IMPRESSIONS SQUARE CODE - FINISH COLOR TO BE SELECTED.
  - D. SOLID PVC 3/4" CORNER BOARD - FINISH COLOR TO BE SELECTED.
  - E. SOLID PVC FASCIA TRIM - FINISH COLOR TO BE SELECTED.
  - F. SOLID PVC RAKE TRIM - FINISH COLOR TO BE SELECTED.
  - G1. 3/8" SOLID PVC HORIZONTAL LINEAL (TYP) FINISH COLOR TO BE SELECTED.
  - G2. 1 1/4" SOLID PVC HORIZONTAL LINEAL (TYP) FINISH COLOR TO BE SELECTED.

- H. PARADIGM STANDARD DESIGNER DOUBLE-HUNG WINDOW
- I. ALTERNATE #1 MODERN SERIES 200 TRIPLE HUNG WINDOW SEE WINDOW SCHEDULE FOR DETAILS
- J. PARADIGM STANDARD DESIGNER AWNING WINDOW
- K. PARADIGM STANDARD DESIGNER AWNING WINDOW
- L. CONTINUOUS RIDGE VENT (TYP. @ ALL CONTINUOUS RIDGE LINES)
- M. VENTED VINYL BEADBOARD SOFFIT W/ MINIMUM VENT AREA OF 5.5 SQUARE INCHES PER SQUARE FOOT OF PANEL. CERTAINTED CERTANUM TRIPLE FOUR, FULLY VENTED OR EQUAL - FINISH COLOR TO BE SELECTED.
- N. BR9500- 12"Dx7 1/4" POLY-CLASSIC TAPERED ROUND COLUMNS
- O. W.R. GRACE ICE AND WEATHERSHIELD (TYP) - 3 LAYERS AT VALLEYS - 2 LAYERS AT EAVES - 1 LAYER AT ROOF/WALL INTERSECTIONS
- P. 3/4" SOLID PVC TRIM
- Q. 3/8" SOLID PVC TRIM
- R. .032 ALUM STEP FLASHING TYPICAL AT ROOF/WALL INTERSECTION (INSTALL OVER ICE AND WEATHERSHIELD AS ALSO SPECIFIED)
- S. ALUMINUM WALL CAP. SEE MECH DRAWINGS. PAINT TO MATCH SIDING.

**CWS Architects**

- Architecture
- Space Planning
- Value Design

154 Cumberland Avenue  
Portland, ME 04101  
Phone: (207)774-4441  
Fax: (207)774-4016  
[www.CWSArch.com](http://www.CWSArch.com)

**LOGAN PLACE**  
PORTLAND, MAINE

Project No: 01409 SP0  
Drawing Title: \_\_\_\_\_

Scale: AS NOTED  
Date: JANUARY 14, 2004

Revisions:

- △
- △
- △
- △
- △

Drawing Number: **A3.1**

Director  
**YC PORTLAND LP,  
C/O AVESTA**  
307 CUMBERLAND AVE.  
PORTLAND, MAINE 04101  
(207) 553-7777

Client  
**YORK-CUMBERLAND**  
HOUSING DEVELOPMENT