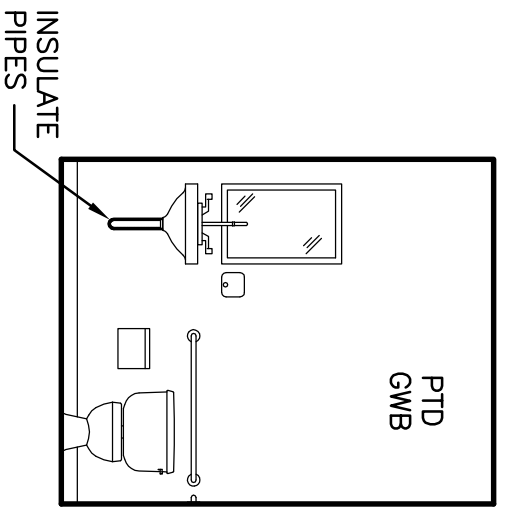
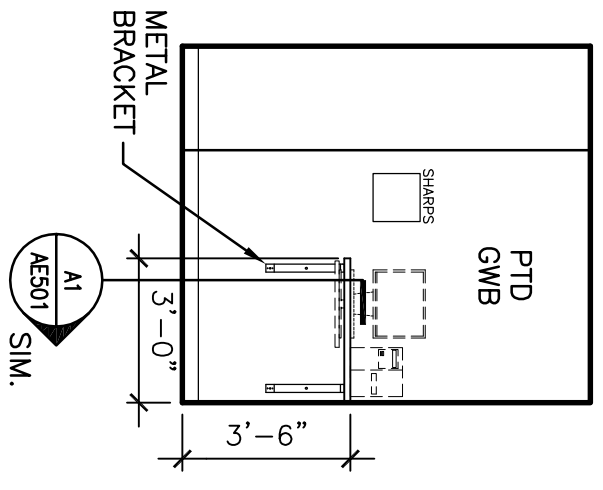
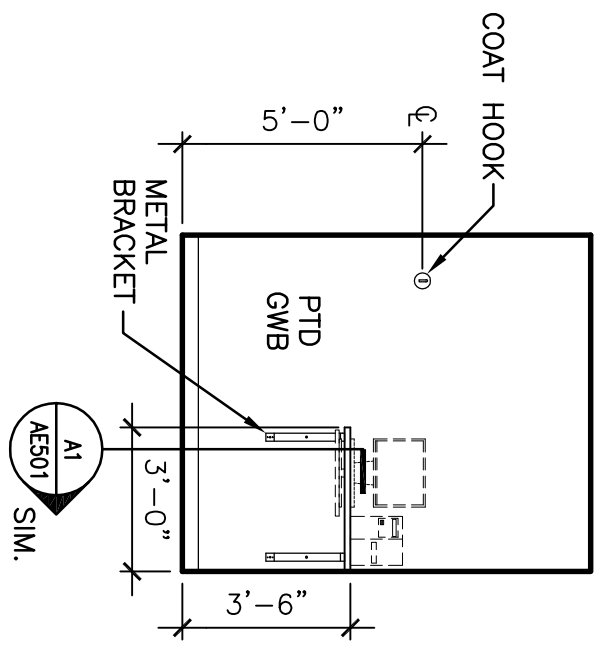


B1 WORK AREA 1150

1/4" = 1'-0"



A1 DRAW 1146
1/4" = 1'-0"

A2 DRAW 1148
1/4" = 1'-0"

A3 TOILET 1147
1/4" = 1'-0"

144 Fore Street/P.O. Box 618
Portland, Maine 04104
tel. (207) 772-3846
fax. (207) 772-1070
www.smrinc.com

ARCHITECTURE
ENGINEERING
PLANNING
INTERIOR DESIGN
COMMISSIONING



**MERCY HOSPITAL
FORE RIVER MOB LAB**
PORTLAND, MAINE

**ISSUED FOR PRICING
6-24-09**

REV	DESCRIPTION	DATE

SCALE:	AS NOTED
PROJECT MANAGER:	GDP
JC/DRAWN BY:	CAH
A/E OF RECORD:	GDP
CAD FILE:	AE201-09067-00
PROJECT NO.:	09067-00
DATE:	
SHEET TITLE:	
INTERIOR ELEVATIONS	
SHEET No.	AE201