

# LANDMARK HEALTHCARE FACILITIES LLC

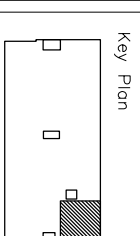
## Mercy Hospital Fore River Medical Pavilion Casco Bay Gastroenterology

Suite No.: 490  
Floor No.: 4th Floor



Building Rendering

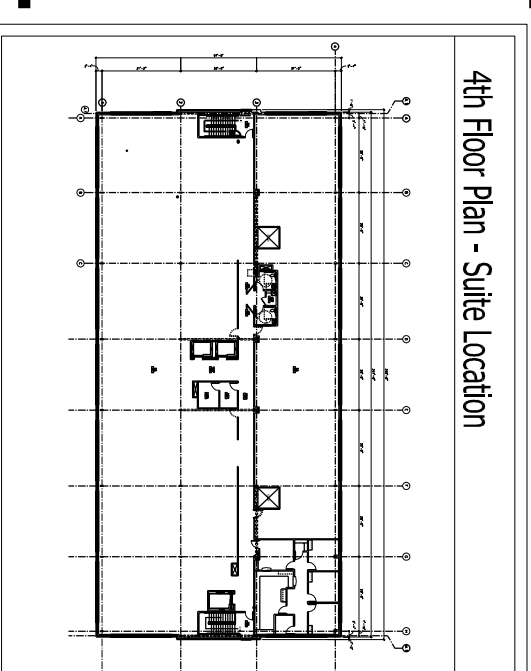
**LANDMARK  
HEALTHCARE  
FACILITIES, LLC**  
839 North Jefferson Street  
Milwaukee, Wisconsin 53202  
Telephone: (414) 277-0500  
Facsimile: (414) 277-1055



Key Plan



Revisions



4th Floor Plan - Suite Location

<b>Architectural</b>	<b>Structural</b>	<b>Mechanical/Plumbing</b>	<b>Electrical</b>	<b>Fire Protection</b>
Francis Cauffman 2120 Arch Street Philadelphia, PA 19103 Ph 215.568.8250 Fx 215.568.2639	ODonnell & Naccarato 111 S. Independence Mall Suite 950 Philadelphia, PA 19106 Ph 215-925-3788 Fx 215-627-1051	AKF ENGINEERS, LLP 1500 Walnut Street Suite 1400 Philadelphia, PA 19102 Ph 215-735-7290 Fx 215-735-6706	AKF ENGINEERS, LLP 1500 Walnut Street Suite 1400 Philadelphia, PA 19102 Ph 215-735-7290 Fx 215-735-6706	AKF ENGINEERS, LLP 1500 Walnut Street Suite 1400 Philadelphia, PA 19102 Ph 215-735-7290 Fx 215-735-6706
T1.1 Title Sheet	H-1.0 HVAC Cover Sheet	E-1.0 Electrical Cover Sheet	FP-1.0 Fire Protection Cover Sheet	
T1.2 Title Sheet	H-2.0 HVAC Floor Plan	E-2.0 Electrical Floor Plan - Power	FP-2.0 Fire Protection Floor Plan	
A6.1 Floor Plan - Architectural (Partial)	H-3.0 HVAC Schedules	E-3.0 Electrical Floor Plan - Lighting	FP-3.0 Fire Protection Schedules & Details	
A6.2 Floor Plan - Furnishings, Power and Equipment Locations	P-1.0 Plumbing Cover Sheet	E-4.0 Electrical Schedules		
A7.1 Room Finish Schedule and Details	P-1.1 Plumbing General Notes	E-4.1 Electrical Schedules		
A8.1 Interior Elevations	P-2.0 Plumbing Floor Plan	E-5.0 Electrical Details		
A8.2 Standard Casework Elevations	P-3.0 Plumbing Schedules			
A8.3 Casework Sections	P-4.0 Plumbing Details			
A8.4 Casework and Countertop Details	P-5.0 Plumbing Risers			
A9.1 Reflected Ceiling Plan				
A10.1 Partition Types				
A10.2 Partition Types and Details				
A10.3 Interior Details				
A10.4 Interior Details				
A11.1 Door Schedule and Details				
A11.2 Equipment by Tenant Schedule				

### Building Data / Code Summary

1,288 S.F.

- Code Reference: Building Code - International Building Code 2003  
Accessibility Code - Maine Accessibility Code ICC / ANSI A117.1  
Plumbing Code - International Plumbing Code 2003  
Fire Protection Code - NFPA Code / City of Portland  
Mechanical Code - International Mechanical Code 2003  
Electrical Code - NEC National Electric Code 2005
- Occupancy / Use Group: Business Use Group B (IBC Code 2003)  
New Business Occupancy (NFPA-101)
- Construction Type: Type IIB with approv. automatic sprinkler system / IBC 2003  
Type II (000) - Unprotected, Noncombustible with approved supervised automatic sprinkler system / NFPA-101/220.  
NFPA 13 - Install of Sprinkler Systems, Ordinary Hazard
- Fire Resistance:  
Exterior Wall - 0 Hr.  
Shaft Wall - 1 Hr.  
Corridor Wall - 0 Hr.  
Demising Wall - 2 Hr.  
Floor/Roof Construction - 0 Hr.  
Columns/Beams - 0 Hr.
- Fire Protection System: Fully Sprinkled, Manual Fire Alarm

Sheet  
Title Sheet

Project  
**MERCURY HOSPITAL  
Medical Office Bldg.  
Portland, Maine  
Casco Bay  
Gastroenterology**

Suite 490

Date  
**February 22, 2008**

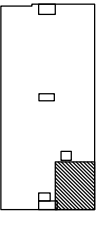
Project No.  
**F07-5256.08**

Sheet No.  
**T1.1**

**LANDMARK  
HEALTHCARE  
FACILITIES, LLC**

839 North Jefferson Street  
Milwaukee, Wisconsin 53202  
Telephone: (414) 277-0500  
Facsimile: (414) 277-1055

Key Plan



Revisions

**GENERAL NOTES**

1. SUITE AREAS SHALL BE FINISHED IN THE CORE AND SHELL BUILDING PHASE AS NOTED BELOW:
  - A) EXTERIOR STUD WALLS: EXPOSED STUDS, INSULATION AND VAPOR BARRIER IF INDICATED BY WALL SECTIONS
  - B) EXTERIOR CONCRETE WALLS: EXPOSED STUDS OR FURRING, INSULATION AND VAPOR BARRIER
  - C) INTERIOR FIRE RATED PARTITIONS: TAPED GYPSUM BOARD
  - D) INTERIOR NON-RATED PARTITIONS: EXPOSED STUDS (AND INSULATION IF APPLICABLE BY WALL TYPE)
  - E) CEILING: EXPOSED STRUCTURE
  - F) FLOORS ON GRADE: GRANULAR FILL OVER VAPOR BARRIER WITH CONCRETE SLAB, INCLUDE IN SHELL AND CORE CONTRACT. SLABS IN TENANT SUITES TO BE POURED AS TENANT CONSTRUCTION DRAWINGS BECOME AVAILABLE.
  - G) FLOORS AT UPPER LEVEL: EXPOSED STRUCTURE
  - H) COLUMNS UNRATED: EXPOSED STEEL OR CONCRETE
  - J) COLUMNS RATED: FIRE PROOFING ON STEEL OR EXPOSED CONCRETE
2. EXTERIOR WALL BELOW FINISH CEILING SHALL BE INSULATED WITH UN-FACED BATT INSULATION IN METAL STUDS AND VAPOR BARRIER ONLY IN SUITE AREAS. DRYWALL AND FINISH SHALL BE PROVIDED IN SUITE AREA BUILD-OUT CONTRACT AFTER OUTLETS HAVE BEEN LOCATED.
3. EXTERIOR WALL ABOVE FINISH CEILING SHALL BE SIMILAR TO NOTE 2 ABOVE PLUS EXTERIOR WALL SHALL RECEIVE 1/4" GYPSUM BOARD TO PROTECT INSULATION AND VAPOR BARRIER ABOVE CEILING. CONTRACTORS SHALL VERIFY FINISH CEILING HEIGHT WITH LANDMARK PRIOR TO START OF CONSTRUCTION AND SHALL PLACE 1/4" GYPSUM BOARD STARTING 6" ABOVE FINISH CEILINGS.
4. SPACE ABOVE "CEILING" IS A RETURN AIR PLENUM. WIRING IN PLENUMS SHALL COMPLY WITH THE REQUIREMENTS OF THE APPLICABLE EDITION OF THE NATIONAL ELECTRIC CODE. LOW VOLTAGE WIRING ABOVE CEILINGS OF CORRIDORS, TELEPHONE AND ELECTRICAL ROOMS IN THE BASE BUILDING, WHICH ARE NON-PLENUM AREAS, MAY BE EXPOSED WHEN THE FLOOR/ CEILING OR ROOF CEILING IS NOT A U.L. ASSEMBLY. BUT MUST COMPLY WITH PLENUM REQUIREMENTS WHEN PART OF A U.L. ASSEMBLY. LOW VOLTAGE WIRING IS NOT TO BE RUN IN THE CEILING SPACE ABOVE PUBLIC RESTROOMS, ELEVATOR ROOMS, OR MECHANICAL ROOMS.
5. EXTERIOR WALL AT BRACE FRAME SHALL BE INSULATED WITH UN-FACED BATT INSULATION AND A VAPOR BARRIER IN SUITE AREA. A SECOND PARTITION SIMILAR TO TYPE "K" SHALL BE PROVIDED AROUND BRACE FRAME. DRYWALL AND FINISH SHALL BE PROVIDED IN A SUITE AREA BUILD-OUT AFTER OUTLETS HAVE BEEN LOCATED. REFER TO DETAIL 5 "FINISH AT STRUCTURAL BRACE FRAME" ON SHEET A10.2
6. SEE SHEETS A10.1 AND A10.2 FOR PARTITION TYPES.
7. DIMENSIONS ARE FACE OF WALL TO FACE OF WALL (NOMINAL).

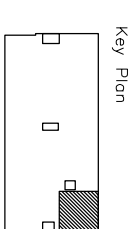
Sheet  
**Title Sheet**

Project  
**MERCY HOSPITAL  
Medical Office Bldg.  
Portland, Maine  
Casco Bay  
Gastroenterology  
Suite 490**

Date  
**February 22, 2008**

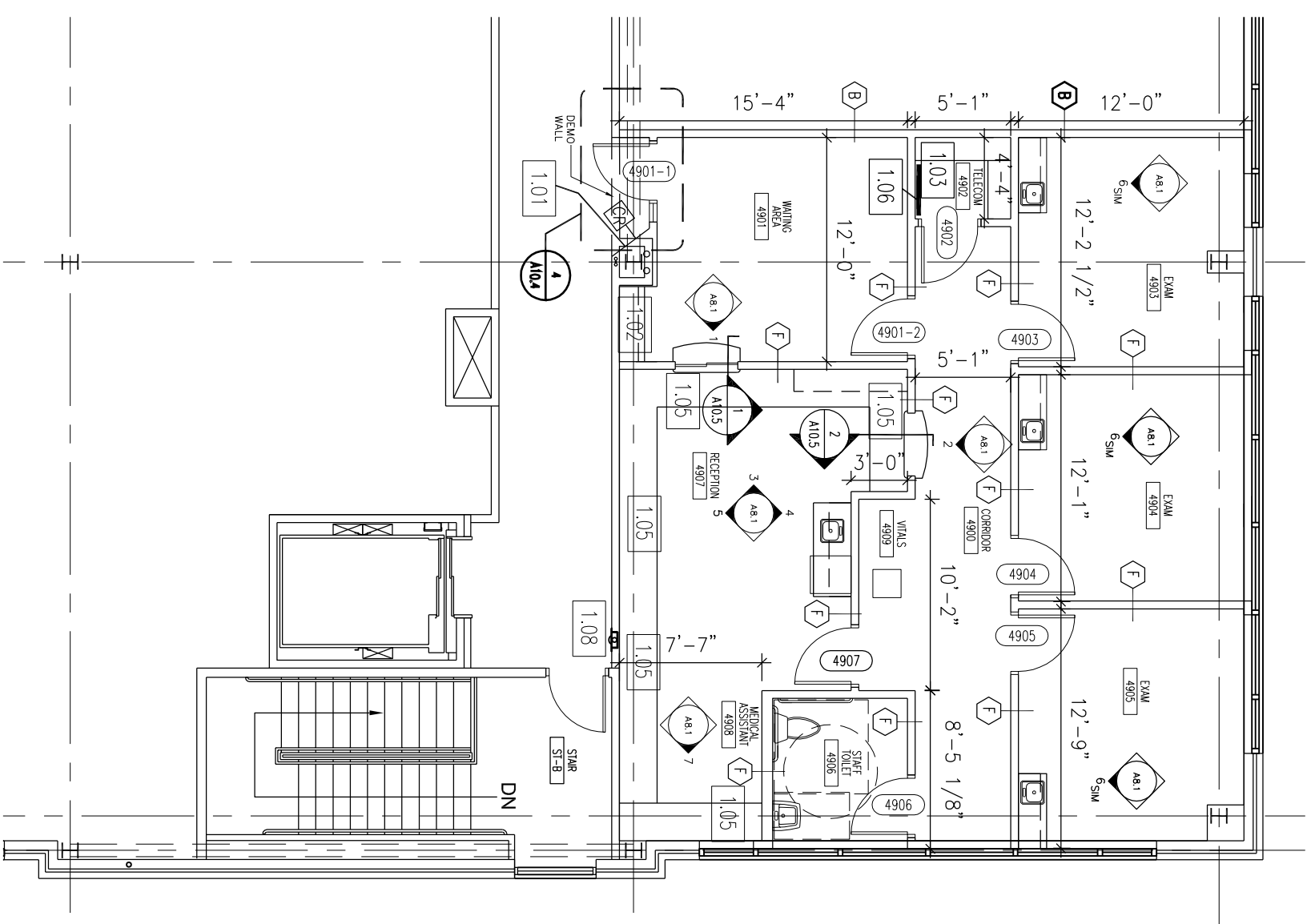
Project No.  
**F07-5256.08**

Sheet No.  
**T1.2**



Revisions

Sheet  
**Floor Plan -  
Architectural  
(Partial)**



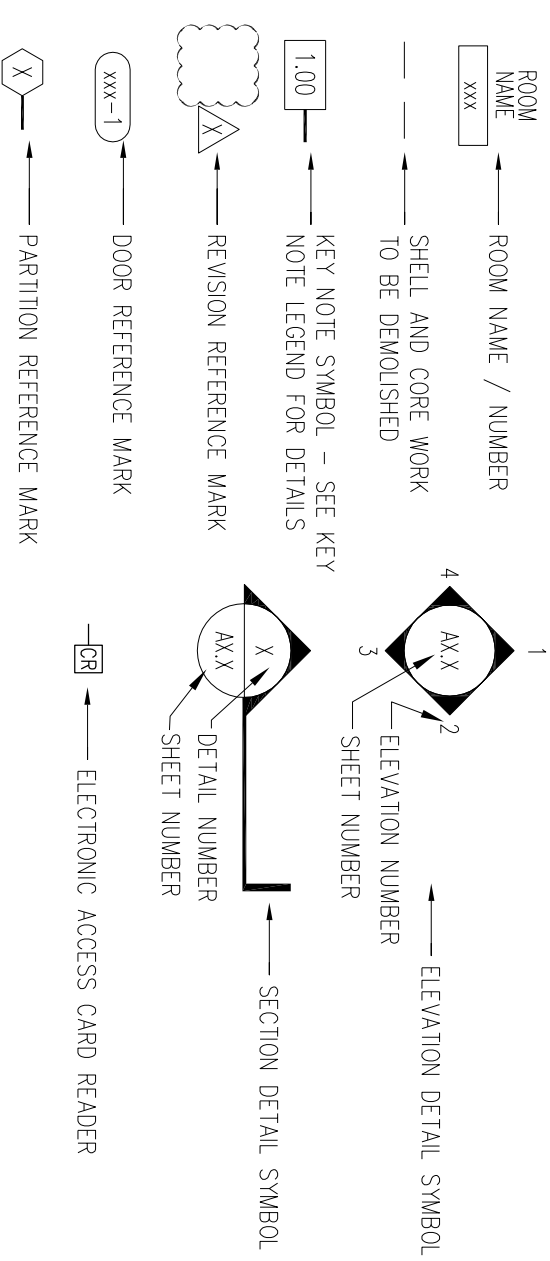
**GENERAL NOTES**

1. PROVIDE INSULATION AND GYPSUM BOARD FINISH ON METAL STUDS PROVIDED IN SHELL AND CORE WORK - FIELD VERIFY AND CLARIFY ALL CONDITIONS PRIOR TO BIDDING.
2. USE WATER RESISTANT GYPSUM BOARD IN TOILET ROOMS AND OTHER SIMILAR ROOMS.
3. ALL CHANGES TO SHELL AND CORE WORK DUE TO TENANT WORK SHALL BE INCLUDED IN THE COST FOR TENANT WORK.
4. DIMENSIONS ARE FACE TO FACE (NOMINAL) OF FINISH MATERIAL, UNLESS NOTED OTHERWISE.
5. PROVIDE MINI-BLINDS IN ALL TENANT SUITE WINDOWS ANCHORED TO ALUMINUM FRAME.

**KEY NOTE LEGEND**

- 1.01 SUITE ENTRY PLAQUE - SEE DETAIL 4/A10.4
- 1.02 COAT RACK - SEE DETAIL 2/A10.4
- 1.03 (5) 1'-4" PLASTIC LAMINATE SHELVES ON ADJUSTABLE STANDARDS
- 1.04 ALIGN SURFACE WITH ADJACENT SURFACE
- 1.05 GROMMET HOLE IN COUNTERTOP
- 1.06 TELEPHONE BACKBOARD
- 1.07 GYPSUM BOARD FINISH ON SHELL AND CORE METAL STUDS PROVIDED BY OTHERS
- 1.08 FIRE EXTINGUISHER AND BRACKET

**LEGEND**



**FLOOR PLAN**

SCALE: 1/8" = 1'-0"

Project  
**MERCY HOSPITAL  
Medical Office Bldg.  
Portland, Maine  
Casco Bay  
Gastroenterology  
Suite 490**

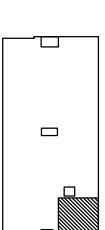
Date  
**February 22, 2008**

Project No.  
**F07-5256.08**

Sheet No.

**A6.1**

Key Plan



Revisions

Sheet  
**Floor Plan -  
Furnishings, Power  
and Equipment  
Locations**

Project  
**MERCY HOSPITAL  
Medical Office Bldg.  
Portland, Maine**

Casco Bay  
Gastroenterology

Suite 490

Date  
**February 22, 2008**

Project No.  
**F07-5256.08**

Sheet No.

**A6.2**

**GENERAL NOTES**

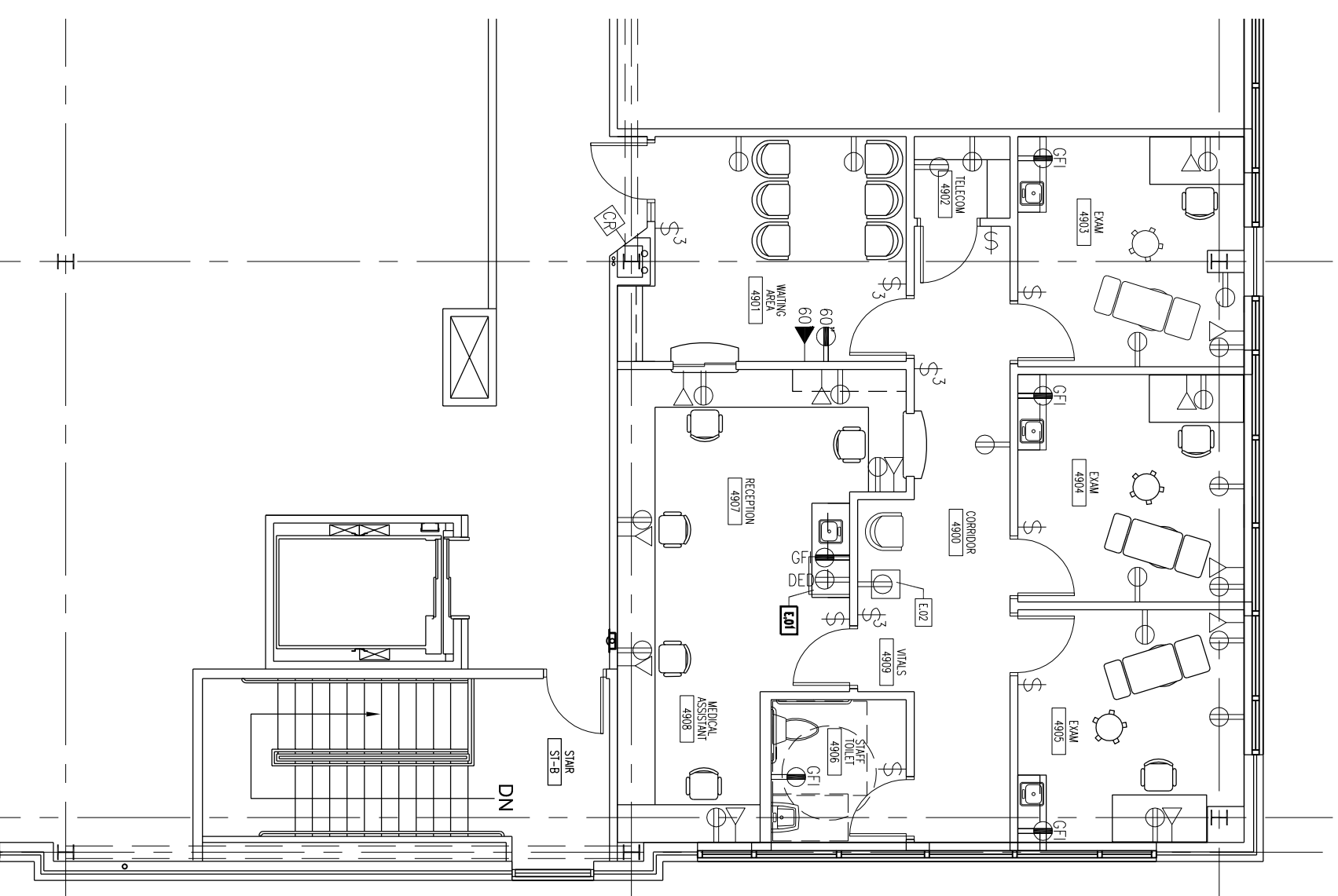
1. THE FOLLOWING WORK, INCLUDING SYSTEMS, DEVICES AND WIRING, IS NOT INCLUDED IN THE CONTRACT BUT MAY BE PROVIDED BY OTHERS:
  - A. TELEPHONE AND COMPUTER SYSTEMS
  - B. MEDICAL GAS SYSTEMS
  - C. PNEUMATIC TUBE SYSTEMS
  - D. SECURITY AND TIME CLOCK SYSTEMS
  - E. NURSE CALL / NURSE NOTIFICATION SYSTEMS
  - F. TOILET PAPER, TOWELS, SOAP DISPENSORS
  - G. CHART HOLDERS AND MAGAZINE RACKS
2. JUNCTION BOX AND CONDUIT TO AN ACCESSIBLE CEILING SHALL BE PROVIDED FOR TELEPHONE / COMPUTER SYSTEMS.
3. JUNCTION BOX AND CONDUIT TO AN ACCESSIBLE CEILING MAY BE PROVIDED FOR SECURITY, NURSE CALL, NURSE NOTIFICATION, AND OTHER SYSTEMS, IF REQUESTED BY THE TENANT.
4. ALL FREESTANDING FURNITURE AND EQUIPMENT TO BE PROVIDED BY TENANT. FREESTANDING FURNITURE SHOWN FOR REFERENCE ONLY.

**MECHANICAL NOTES**

1. PERIMETER ROOMS WILL BE ZONED TOGETHER AND SHALL BE CONDITIONED WITH ELECTRIC REHEAT COILS IN FAN POWERED VAV TERMINAL UNITS AND CONTROLLED WITH ONE THERMOSTAT.
2. INTERIOR ROOMS WILL BE ZONED TOGETHER AND SHALL BE CONDITIONED WITH SHUT-OFF FAN POWERED VAV TERMINAL UNITS AND CONTROLLED WITH ONE THERMOSTAT.
3. RETURN AIR SHALL BE THROUGH A PLENUM TYPE RETURN AIR LIGHT FIXTURE.
4. ROOFTOP MOUNTED CENTRAL EXHAUST SHALL BE PROVIDED FOR TOILET ROOMS.

**LEGEND**

- |  |   |  |  |
|--|---|--|--|
|  | DUPLEX RECEPTACLE MOUNTED 18" AFF                       |  | SINGLE POLE SWITCH                                     |
|  | DUPLEX RECEPTACLE MOUNTED ABOVE COUNTER                 |  | THREE WAY SINGLE POLE SWITCH                           |
|  | DUPLEX RECEPTACLE MOUNTED ABOVE COUNTER - GFI           |  | EQUIPMENT KEY NOTE SYMBOL SEE A11.2 EQUIPMENT SCHEDULE |
|  | DUPLEX MTD. AT HEIGHT NOTED -CONFIRM HEIGHT WITH OWNER  |  | ELECTRONIC ACCESS CARD READER                          |
|  | TELEPHONE / COMPUTER JUNCTION BOX MOUNTED 18" AFF       |  |  |
|  | TELEPHONE / COMPUTER JUNCTION BOX MOUNTED ABOVE COUNTER |  |  |



**1 FLOOR PLAN**

SCALE: 1/8" = 1'-0"

## GENERAL NOTES

- HOLLOW METAL DOOR AND WINDOW FRAMES IN CORRIDOR WALLS SHALL BE PAINTED TO MATCH SHELL AND CORE HOLLOW METAL FRAMES.
- ALL OTHER HOLLOW METAL DOOR AND WINDOW FRAMES IN TENANT SUITE SHALL BE PAINTED TO MATCH RUBBER BASE COLOR.
- RUBBER FLOOR TRANSITION STRIP COLOR SHALL MATCH RUBBER BASE COLOR.

## RFS LEGEND

DESIGNATION	XX-X	COLOR
	└───┘	MATERIAL
FLOORS	FIELD COLOR	ACCENT OR BORDER COLOR
WALLS	FIELD COLOR	ACCENT OR BORDER COLOR

## INTERIOR FINISH LEGEND

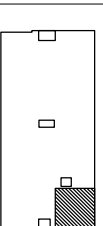
CPT - CARPET	CPT-1	CAMBRIDGE, "ABERDEEN
	CPT-2	CAMBRIDGE, "ABERDEEN
	CPT-3	CAMBRIDGE, "ABERDEEN
	CPT-4	CAMBRIDGE, "ABERDEEN
	CPT-5	CAMBRIDGE, "ABERDEEN
	CPT-6	CAMBRIDGE, "ABERDEEN
	CPT-7	CAMBRIDGE, "ST. ANDREW #26710"
	CPT-8	CAMBRIDGE, "ST. ANDREW #26706"
	CPT-9	CAMBRIDGE, "ST. ANDREW #26704"
	CPT-10	CAMBRIDGE, "ST. ANDREW #26707"
	CPT-11	CAMBRIDGE, "ST. ANDREW #26711"
	CPT-12	CAMBRIDGE, "ST. ANDREW #26708"
	CPT-13	CAMBRIDGE, "CROSSROADS 36 #CRS16"
	CPT-14	CAMBRIDGE, "CROSSROADS 36 #CRS31"
	CPT-15	CAMBRIDGE, "CROSSROADS 36 #CRS18"
	CPT-16	CAMBRIDGE, "CROSSROADS 36 #CRS36"
	CPT-17	CAMBRIDGE, "CROSSROADS 36 #CRS13"
	CPT-18	CAMBRIDGE, "CROSSROADS 36 #CRS37"
	CB	CARPET BASE TO MATCH
VCT - VINYL TILE	VCT-1	TARGETT, "DESERT SAND #1337"
RB - RUBBER BASE	RB-1	JOHNSONITE, "BEIGE #49"
	RB-2	JOHNSONITE, "CHARCOAL #20"
	RB-3	JOHNSONITE, "THUNDER #168"
	RB-4	JOHNSONITE, "BROWN #47"
CT - CERAMIC TILE	CT-1	DAL-TILE, "ALMOND MATT #X735"
	CT-2	DAL-TILE, "BROWNSTONE MOSAICS #DK156"
PT - PAINT	PT-1	BEN MOORE, "SEA URCHIN #1052"
	PT-2	BEN MOORE, "CAYMAN ISLANDS #952"
	PT-3	BEN MOORE, "NATURE'S ESSENTIALS #1521"
WVC - VINYL WALL COVERING	WVC-1	KOROSEAL, "CIP MOUNTAIN TRIAL #19"
	WVC-2	KOROSEAL, "CIP TAWNY TAUPE #36"
	WVC-3	KOROSEAL, "CIP LA TERRA #46"
	WVC-4	KOROSEAL, "CIP SAND STONE #04"
	WVC-5	KOROSEAL, "CIP TOASTED ALMOND #12"
	WVC-6	KOROSEAL, "CIP ACAPULCO #07"
	WVC-7	KOROSEAL, "CIP FLINT #24"
	WVC-8	KOROSEAL, "CIP PRAIRIE DUST #15"
	WVC-9	KOROSEAL, "CIP SEAL ROCK #81"
	WVC-10	KOROSEAL, "CIP ISLE #88"
	WVC-11	KOROSEAL, "CIP FOUNTAIN HEAD #30"
	WVC-12	KOROSEAL, "CIP ARROWHEAD #97"
	WVC-13	KOROSEAL, "CIP TUMBLEWEED #23"
ACT - ACOUSTICAL CEILING CEILING	ACT-1	USG, "F FISSURED SL #132"

## ROOM FINISH SCHEDULE

ROOM NO.	ROOM NAME	FLOOR			WALLS				CEILING
		FINISH	BASE		NORTH	SOUTH	EAST	WEST	
4900	CORRIDOR	CPT-	CB-		PT-	PT-	PT-	PT-	ACT-1
4901	WAITING AREA	CPT-	CB-		PT-	PT-	PT-	PT-	ACT-1
4902	TELECOM CLOSET	CPT-	CB-		PT-	PT-	PT-	PT-	ACT-1
4903	EXAM	CPT-	CB-		PT-	PT-	PT-	PT-	ACT-1
4904	EXAM	CPT-	CB-		PT-	PT-	PT-	PT-	ACT-1
4905	EXAM	CPT-	CB-		PT-	PT-	PT-	PT-	ACT-1
4906	STAFF TOILET	CPT-	CB-		PT-	PT-	PT-	PT-	ACT-1
4907	RECEPTION OFFICE	CPT-	CB-		PT-	PT-	PT-	PT-	ACT-1
4908	MEDICAL ASSISTANT	CPT-	CB-		PT-	PT-	PT-	PT-	ACT-1
4909	VITALS AREA	CPT-	CB-		PT-	PT-	PT-	PT-	ACT-1

**LANDMARK HEALTHCARE FACILITIES, LLC**  
 839 North Jefferson Street  
 Milwaukee, Wisconsin 53202  
 Telephone: (414) 277-0500  
 Facsimile: (414) 277-1055

Key Plan



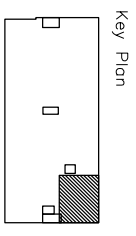
Revisions

Sheet  
**Room Finish Schedule and Details**

Project  
**MERCY HOSPITAL**  
 Medical Office Bldg.  
 Portland, Maine  
 Casco Bay  
 Gastroenterology  
 Suite 490

Date  
**February 22, 2008**  
 Project No.  
**F07-5256.08**

Sheet No.  
**A7.1**



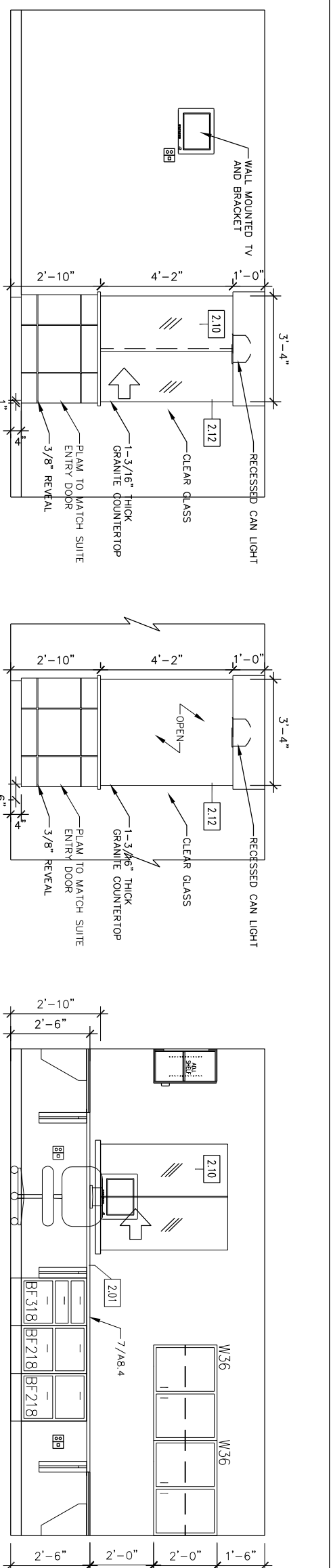
Revisions

Sheet  
**Interior  
Elevations**

Project  
**MERCY HOSPITAL  
Medical Office Bldg.  
Portland, Maine  
Casco Bay  
Gastroenterology  
Suite 490**

Date  
**February 22, 2008**  
Project No.  
**F07-5256.08**

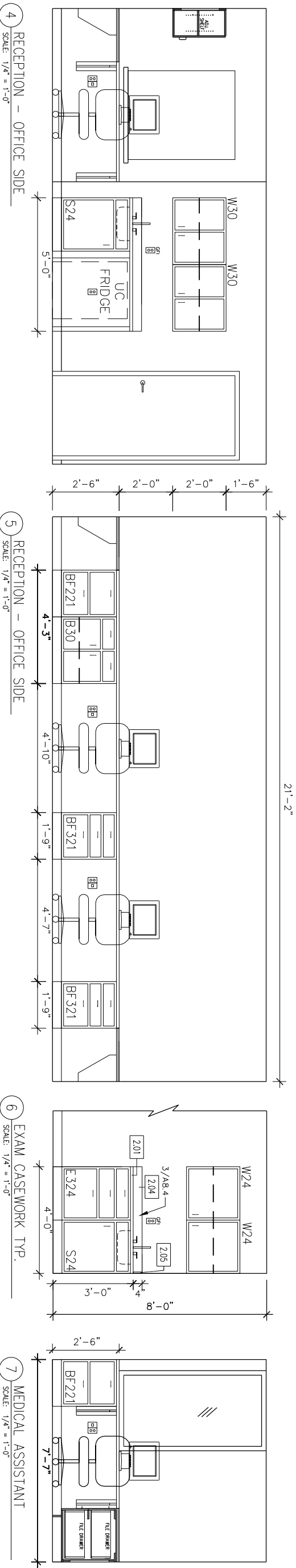
Sheet No.  
**A8.1**



1 RECEPTION - CHECK-IN  
SCALE: 1/4" = 1'-0"

2 RECEPTION - CHECK-OUT  
SCALE: 1/4" = 1'-0"

3 RECEPTION - OFFICE SIDE  
SCALE: 1/4" = 1'-0"



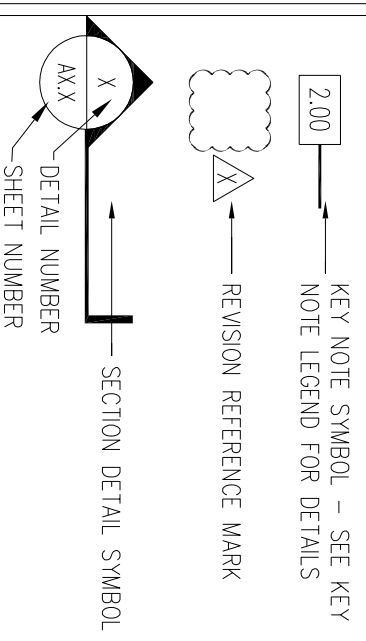
4 RECEPTION - OFFICE SIDE  
SCALE: 1/4" = 1'-0"

5 RECEPTION - OFFICE SIDE  
SCALE: 1/4" = 1'-0"

6 EXAM CASEWORK TYP.  
SCALE: 1/4" = 1'-0"

7 MEDICAL ASSISTANT  
SCALE: 1/4" = 1'-0"

**LEGEND**

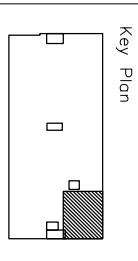


**KEY NOTE LEGEND**

2.01	PLASTIC LAMINATE COUNTERTOP	2.11	UNDERCOUNTER REFRIGERATOR SPACE
2.02	3 1/2" PLASTIC LAMINATE APRON	2.12	GYPSUM BOARD CASSED OPENING
2.03	3 1/2" PLASTIC LAMINATE VALANCE	2.13	12" PLASTIC LAMINATE WRITING SURFACE
2.04	4" PLASTIC LAMINATE BACKSPLASH	2.14	GROMMET HOLE IN COUNTERTOP
2.05	4" PLASTIC LAMINATE SIDESPLASH	2.15	CAM LOCK
2.06	PLASTIC LAMINATE END PANEL	2.16	SPECIMEN PASS-THRU CABINET
2.07	PLASTIC LAMINATE FILLER PANEL		
2.08	1'-4" PLASTIC LAMINATE SUPPORT BRACKET		
2.09	1'-0" PLASTIC LAMINATE SUPPORT BRACKET		
2.10	SLIDING GLASS RECEPTION COUNTER		

**GENERAL NOTES**

1. PLASTIC LAMINATE CABINETS SHALL BE PL-\*\*\*\*, FORMICA #\*\*\*\*\*, UNLESS NOTED OTHERWISE.
2. PLASTIC LAMINATE COUNTERTOPS SHALL BE PL-\*\*\*\*, FORMICA #\*\*\*\*\*, UNLESS NOTED OTHERWISE.
3. PROVIDE END SPLASH AT WALL AT COUNTERTOPS WITH BACKSPLASHES AND SINKS.
4. DIMENSIONS ARE FACE TO FACE (NOMINAL) OF FINISH MATERIAL, UNLESS NOTED OTHERWISE.
5. BASE FINISH MATERIAL AND ELECTRICAL DEVICES ARE NOT INDICATED FOR DRAWING CLARITY.
6. ALL FREESTANDING FURNITURE AND EQUIPMENT TO BE PROVIDED BY TENANT. FREESTANDING FURNITURE SHOWN FOR REFERENCE ONLY.



Revisions

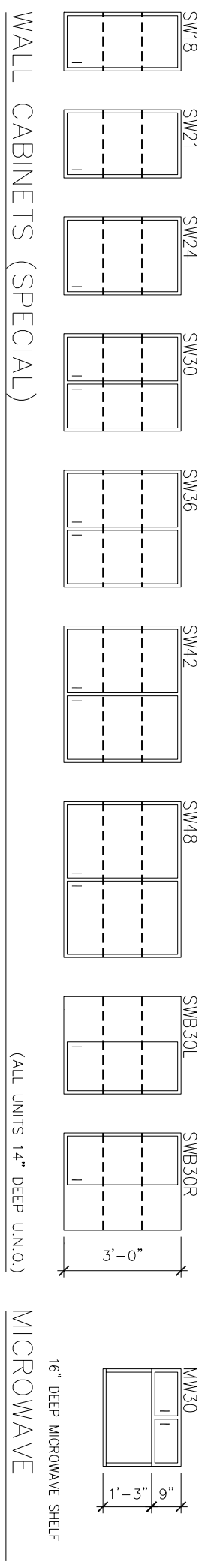
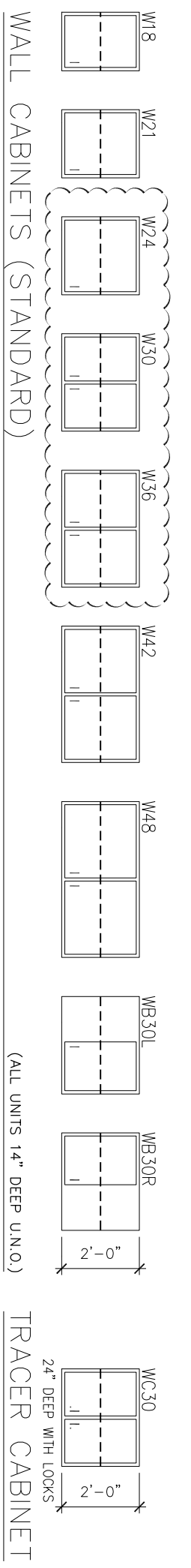
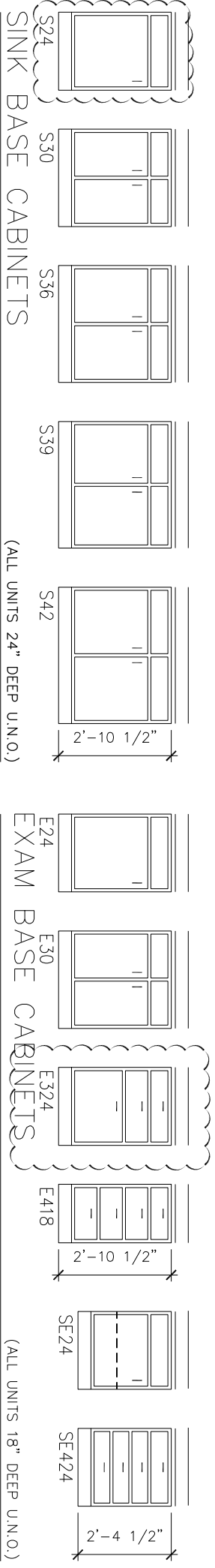
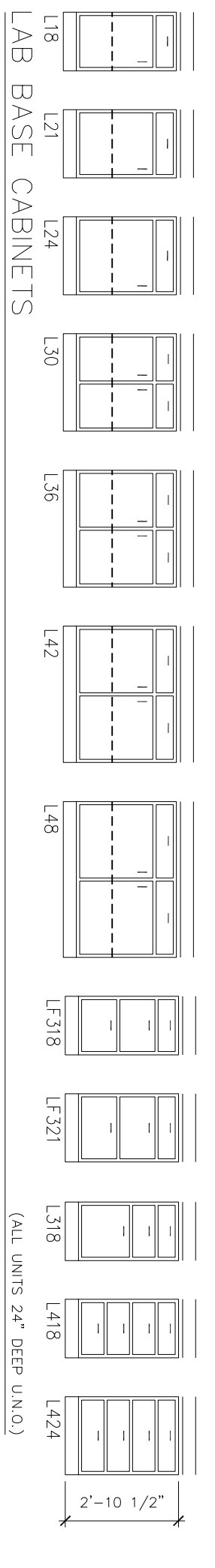
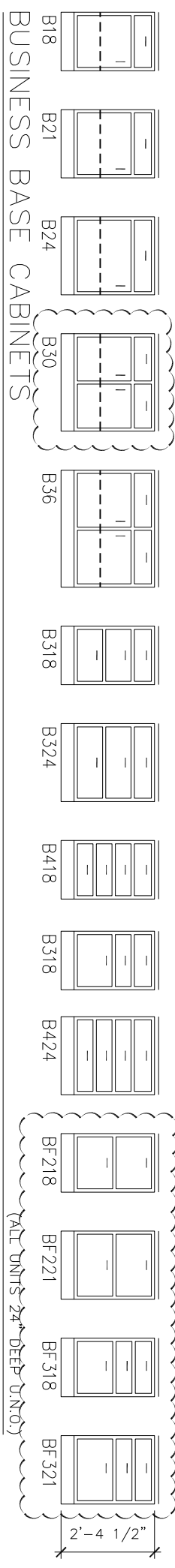
Sheet  
**Standard  
Casework  
Elevations**

Project  
**MERCY HOSPITAL  
Medical Office Bldg.  
Portland, Maine  
Casco Bay  
Gastroenterology  
Suite 490**

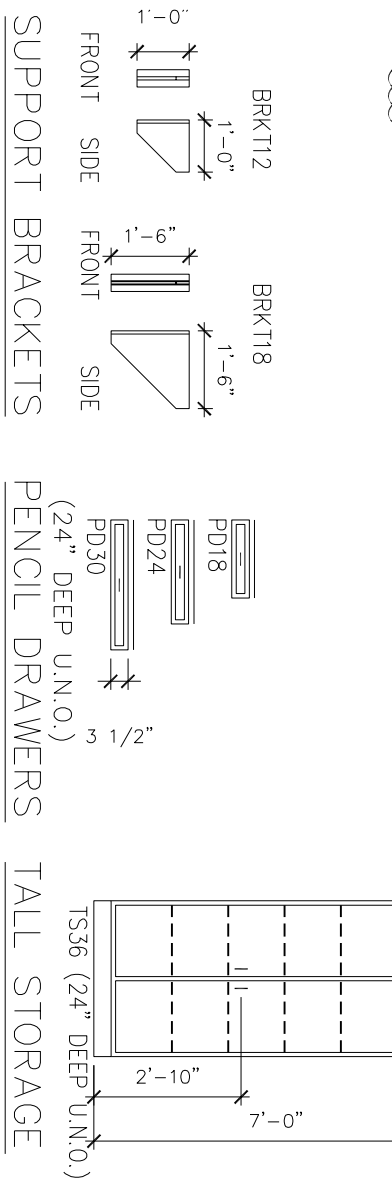
Date  
**February 22, 2008**  
Project No.  
**F07-5256.08**  
Sheet No.  
**A8.2**

**LAB BASE CABINETS**

- B324- BUSINESS DRAWER BASE CABINET  
WIDTH IN INCHES  
NO. OF DRAWERS
- BF218- BUSINESS FILE DRAWER BASE CABINET  
WIDTH IN INCHES  
NO. OF DRAWERS
- L324- LAB DRAWER BASE CABINET  
WIDTH IN INCHES  
NO. OF DRAWERS
- LF318- LAB FILE DRAWER BASE CABINET  
WIDTH IN INCHES  
NO. OF DRAWERS
- S24- SINK BASE CABINET  
WIDTH IN INCHES
- E24- EXAM BASE CABINET  
WIDTH IN INCHES
- E424- EXAM BASE CABINET  
WIDTH IN INCHES  
NO. OF DRAWERS
- SE24- SPECIAL EXAM BASE CABINET  
WIDTH IN INCHES
- SE424- SPECIAL EXAM BASE CABINET  
WIDTH IN INCHES  
NO. OF DRAWERS
- W18- WALL CABINET  
WIDTH IN INCHES
- SW18- SPECIAL WALL CABINET  
WIDTH IN INCHES
- PD24- PENCIL DRAWER  
WIDTH IN INCHES
- TS36- TALL STORAGE CABINET
- WB30L- LEFT BLIND CORNER WALL CABINET
- WB30R- RIGHT BLIND CORNER WALL CABINET
- WC30- TRACER COMPUTER WALL CABINET
- MW30- MIRCORWAVE WALL CABINET

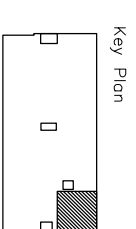


INDICATES DETAIL WAS USED



**GENERAL NOTES**

- ALL CABINET AND COUNTERTOP MATERIAL IS 3/4" THICK UNLESS NOTED OTHERWISE.
- THE BOTTOM OF ALL DRAWERS IS 5/16" (8MM) ABOVE EITHER THE CABINET BOTTOM OR THE HORIZONTAL BRACES.
- WALL AND BASE CABINET BACKS AND DRAWER BOTTOMS ARE 1/4" THICK. ALL OTHER CABINET AND COUNTER TOP COMPONENTS ARE 3/4" THICK UNLESS NOTED OTHERWISE.
- ALL EXPOSED COUNTERTOP CORNERS ARE TO BE RADIUSSED.



Revisions

Sheet  
**Casework  
Sections**

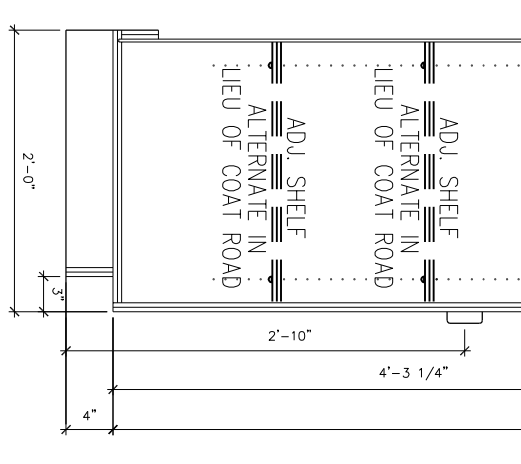
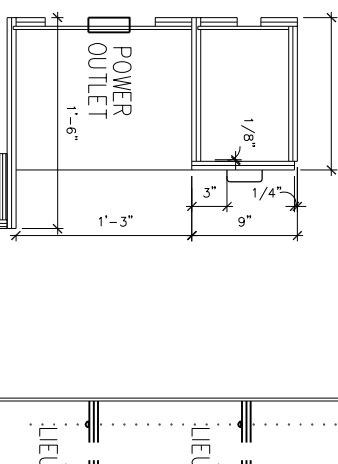
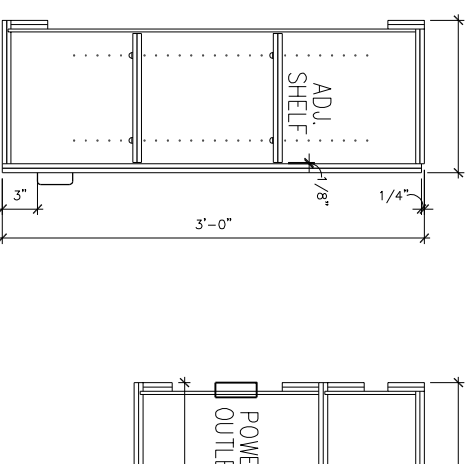
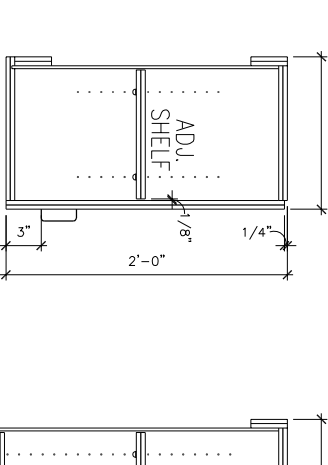
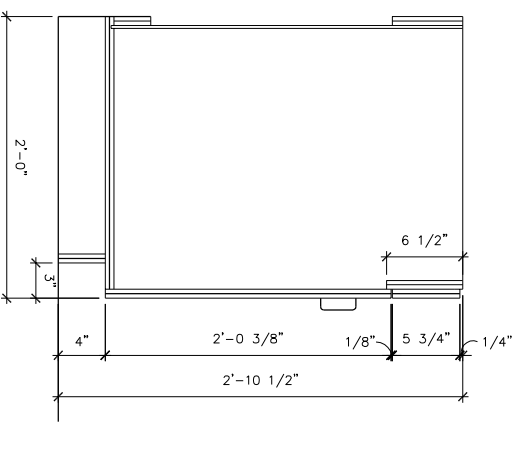
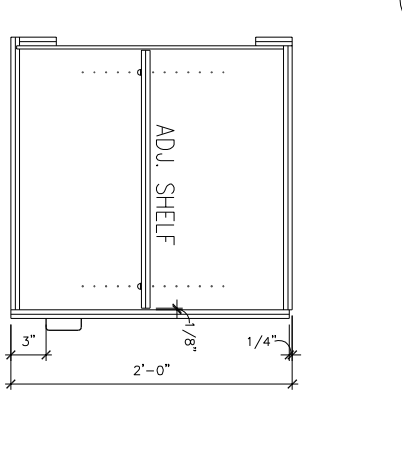
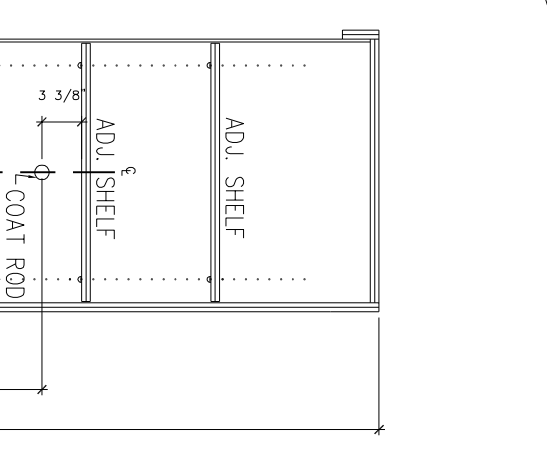
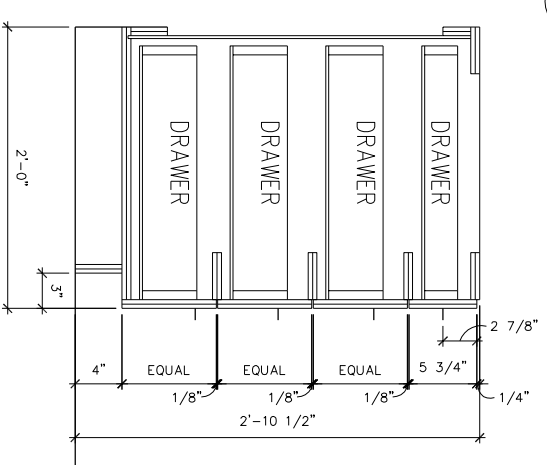
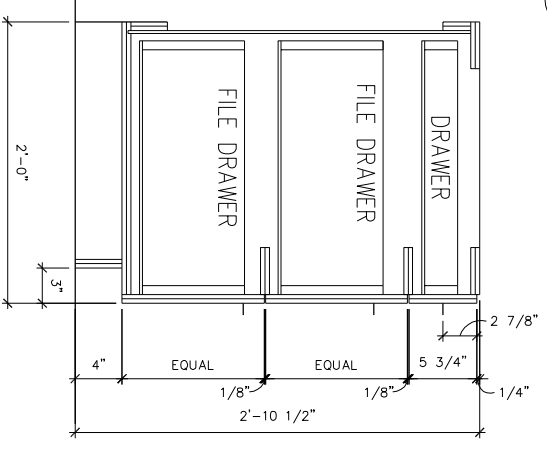
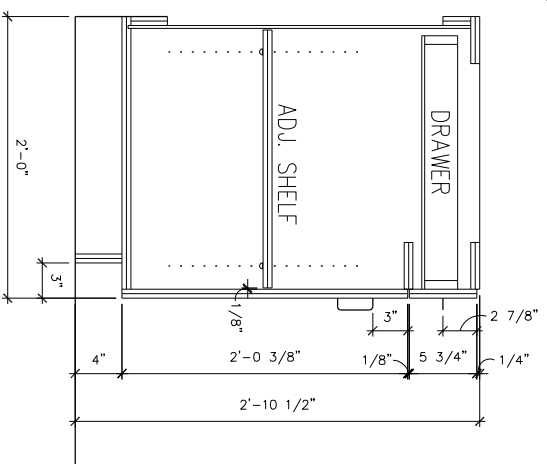
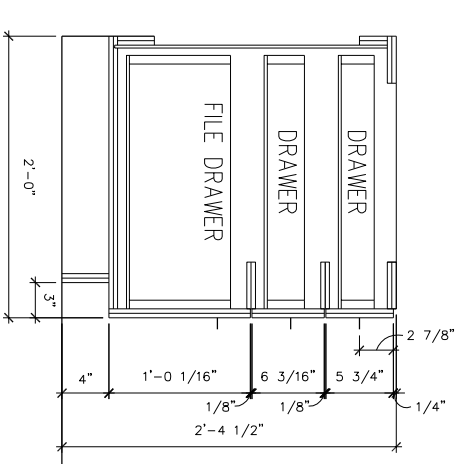
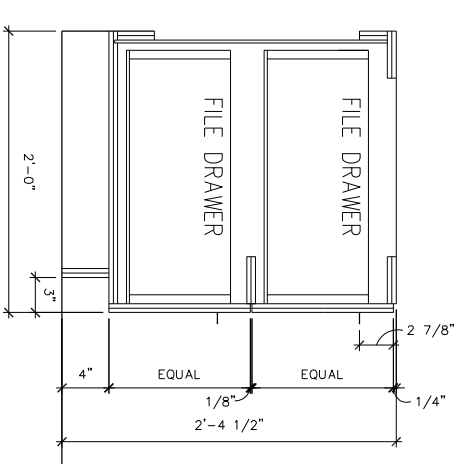
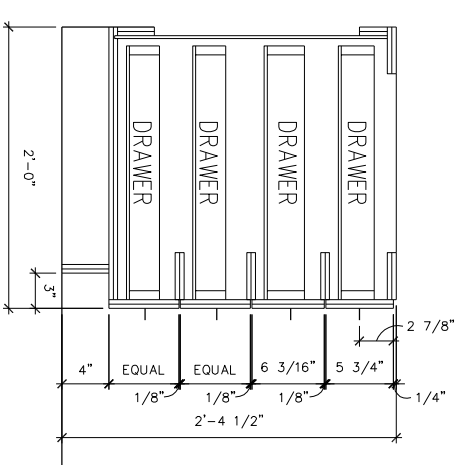
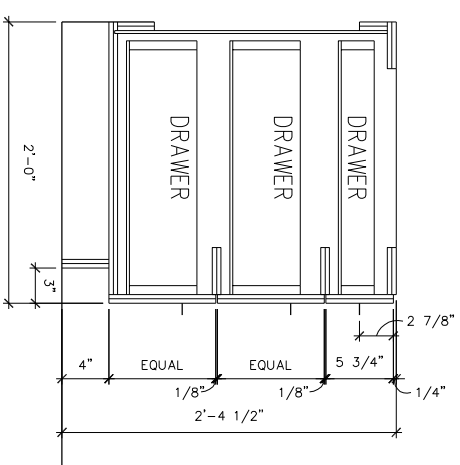
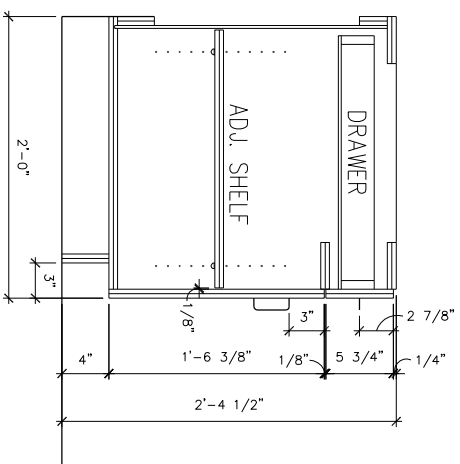
Project  
**MERCY HOSPITAL  
Medical Office Bldg.  
Portland, Maine  
Casco Bay  
Gastroenterology  
Suite 490**

Date  
**February 22, 2008**

Project No.  
**F07-5256.08**

Sheet No.

**A8.3**



**GENERAL NOTES**

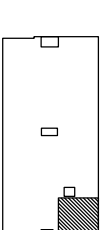
1. ALL CABINET AND COUNTERTOP MATERIAL IS 3/4" THICK UNLESS NOTED OTHERWISE.
2. THE BOTTOM OF ALL DRAWERS IS 5/16" (8MM) ABOVE EITHER THE CABINET BOTTOM OR THE HORIZONTAL BRACES.
3. WALL AND BASE CABINET BACKS AND DRAWER BOTTOMS ARE 1/4" THICK. ALL OTHER CABINET AND COUNTERTOP COMPONENTS ARE 3/4" THICK UNLESS NOTED OTHERWISE.
4. ALL EXPOSED COUNTERTOP CORNERS ARE TO BE RADIUSSED.

INDICATES DETAIL WAS USED

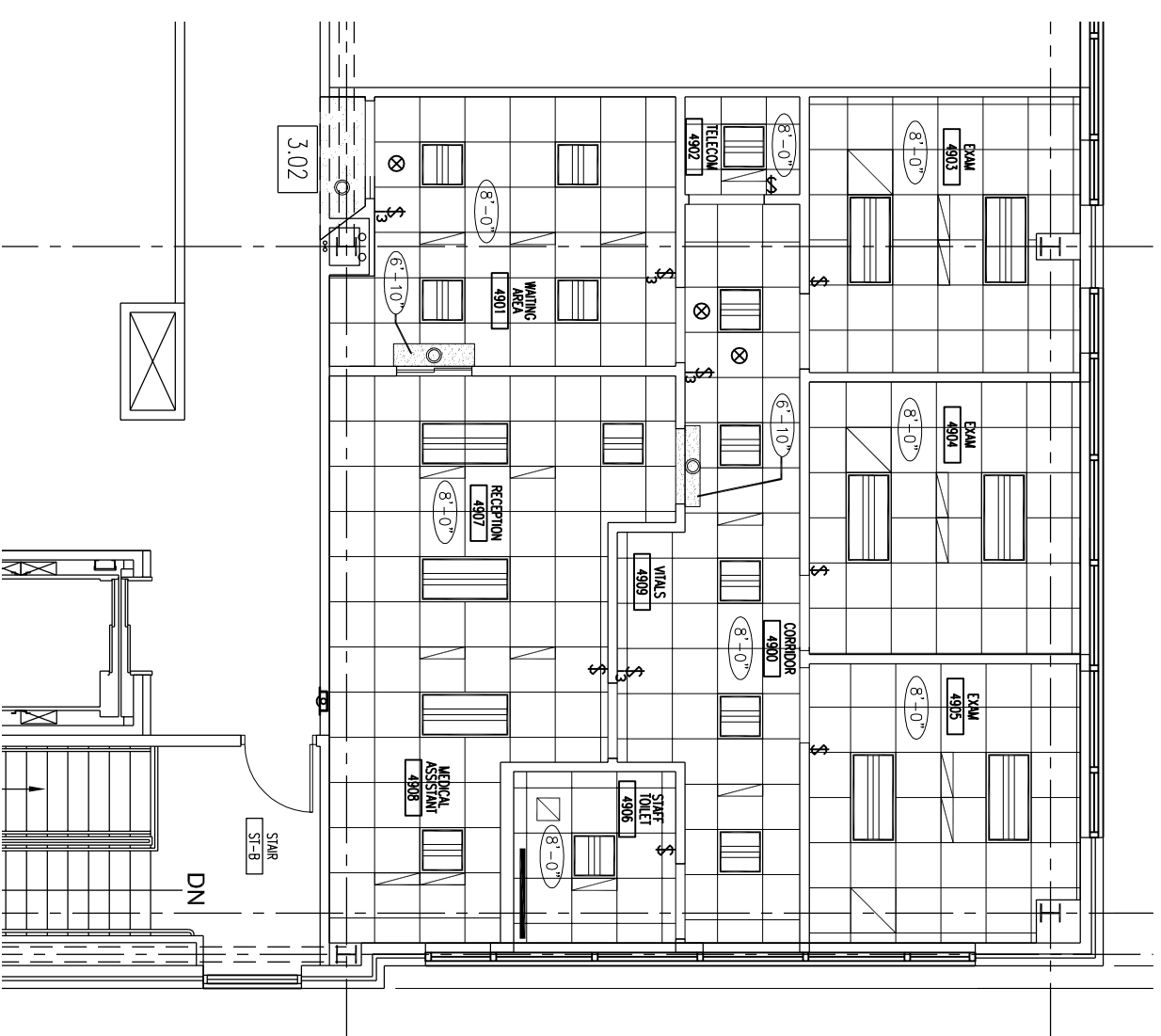




Key Plan



Revisions



**1 FLOOR PLAN**  
SCALE: 1/8" = 1'-0"

**KEY NOTE LEGEND**

- 3.01 CUBICAL CURTAIN TRACK  
CURTAIN SHALL BE PROVIDED BY TENANT
- 3.02 7'-2" GYPSUM BOARD SOFFIT
- 3.03 7'-0" GYPSUM BOARD HEADER
- 3.04 7'-0" GYPSUM BOARD CASSED OPENING

**LEGEND**

- ROOM NAME / NUMBER  
xxx → ROOM NAME / NUMBER
- KEY NOTE SYMBOL - SEE KEY NOTE LEGEND FOR DETAILS  
1.00 → KEY NOTE SYMBOL - SEE KEY NOTE LEGEND FOR DETAILS
- REVISION REFERENCE MARK  
X → REVISION REFERENCE MARK
- CEILING HEIGHT AFF  
8'-0" → CEILING HEIGHT AFF
- ACOUSTICAL TILE CEILING  
[Grid pattern] → ACOUSTICAL TILE CEILING
- SUSPENDED GYPSUM BOARD CEILING OR SOFFIT  
[Stippled area] → SUSPENDED GYPSUM BOARD CEILING OR SOFFIT
- 2' x 4' FLUORESCENT LIGHT DIRECT/INDIRECT FIXTURE  
[Rectangular symbol] → 2' x 4' FLUORESCENT LIGHT DIRECT/INDIRECT FIXTURE
- 2' x 2' FLUORESCENT LIGHT DIRECT/INDIRECT FIXTURE  
[Smaller rectangular symbol] → 2' x 2' FLUORESCENT LIGHT DIRECT/INDIRECT FIXTURE
- STANDARD WALLMOUNTED VANITY  
Focal Point - Verve II 48  
Contact: Doug Wright - 609-217-2977  
[Rectangular symbol] → STANDARD WALLMOUNTED VANITY
- INCANDESCENT CAN LIGHT  
[Circular symbol] → INCANDESCENT CAN LIGHT
- EXIT SIGN - SEE ELEC. DWGS.  
[Circle with X symbol] → EXIT SIGN - SEE ELEC. DWGS.
- VARIOUS HVAC DIFFUSERS - SEE MECH. DWGS.  
[Diagonal line symbol] → VARIOUS HVAC DIFFUSERS - SEE MECH. DWGS.
- MINI BLINDS SECURED TO ALUMINUM WINDOW HEAD  
[Horizontal line symbol] → MINI BLINDS SECURED TO ALUMINUM WINDOW HEAD

ISSUED FOR 100% CONSTRUCTION DOCUMENTATION

Sheet  
**Partial 4th  
Floor Reflected  
Ceiling Plan**

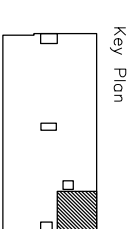
Project  
**MERCY HOSPITAL  
Medical Office Bldg.  
Portland, Maine**

Casco Bay  
Gastroenterology  
Suite 490

Date  
**February 22, 2008**

Project No.  
**F07-5256.08**

Sheet No.  
**A9.1**



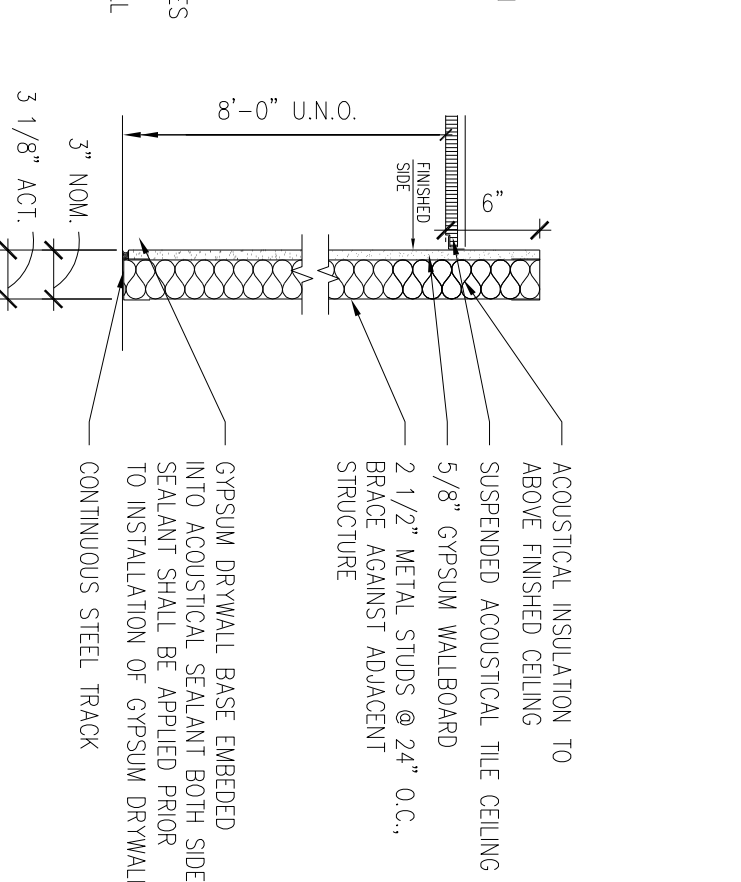
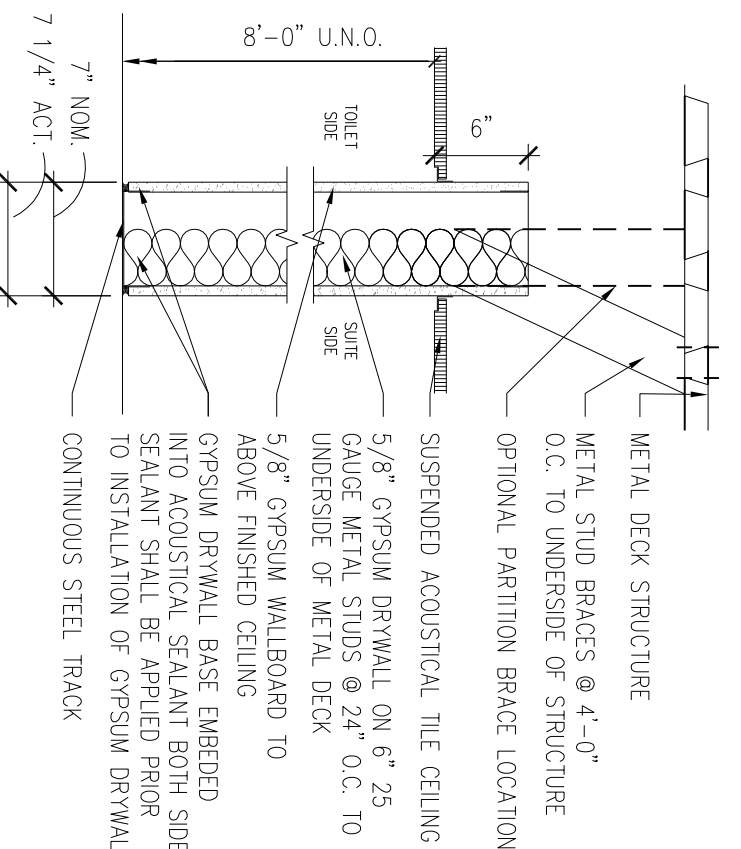
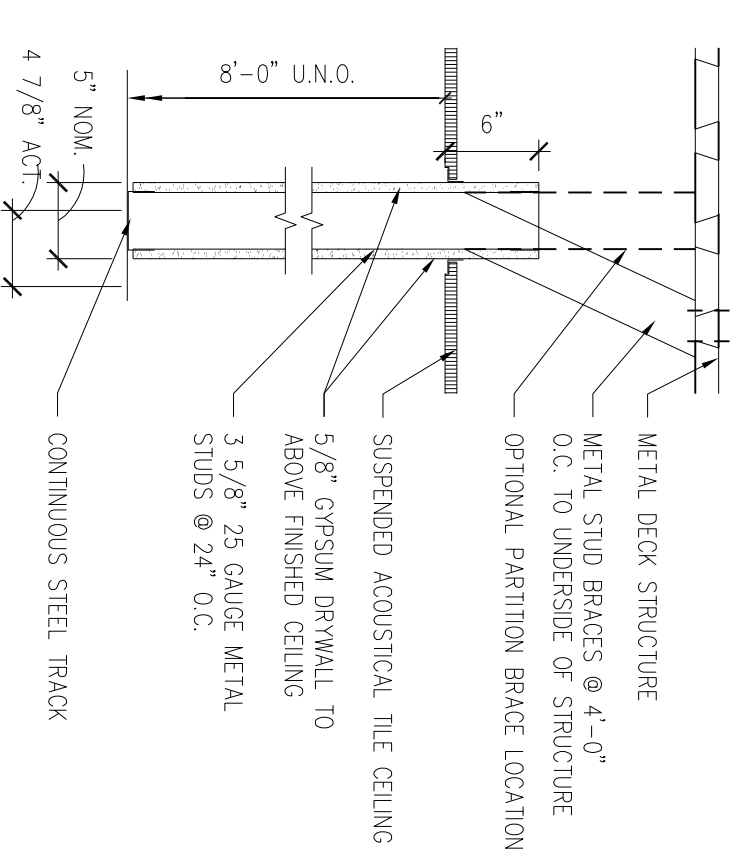
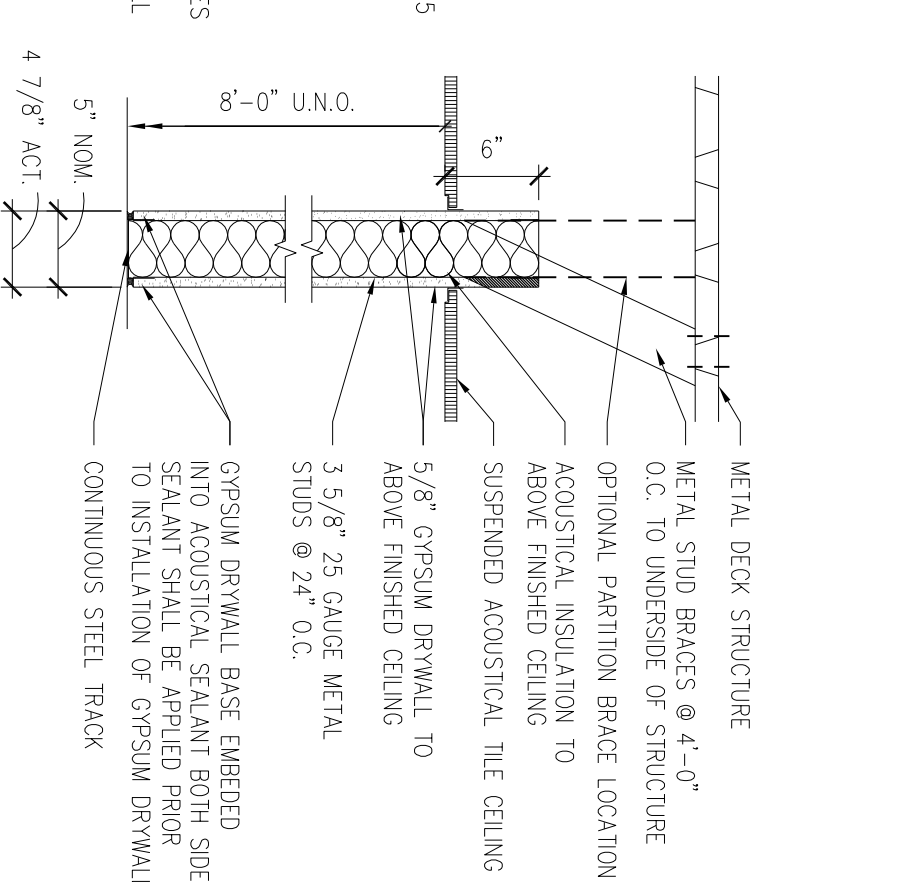
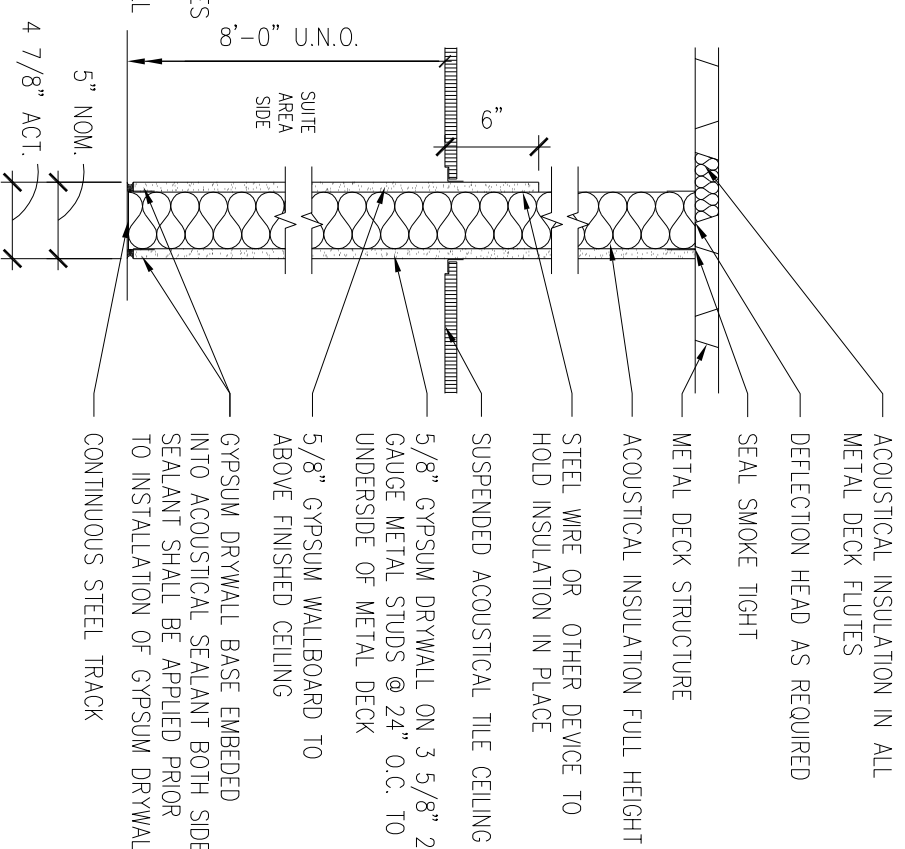
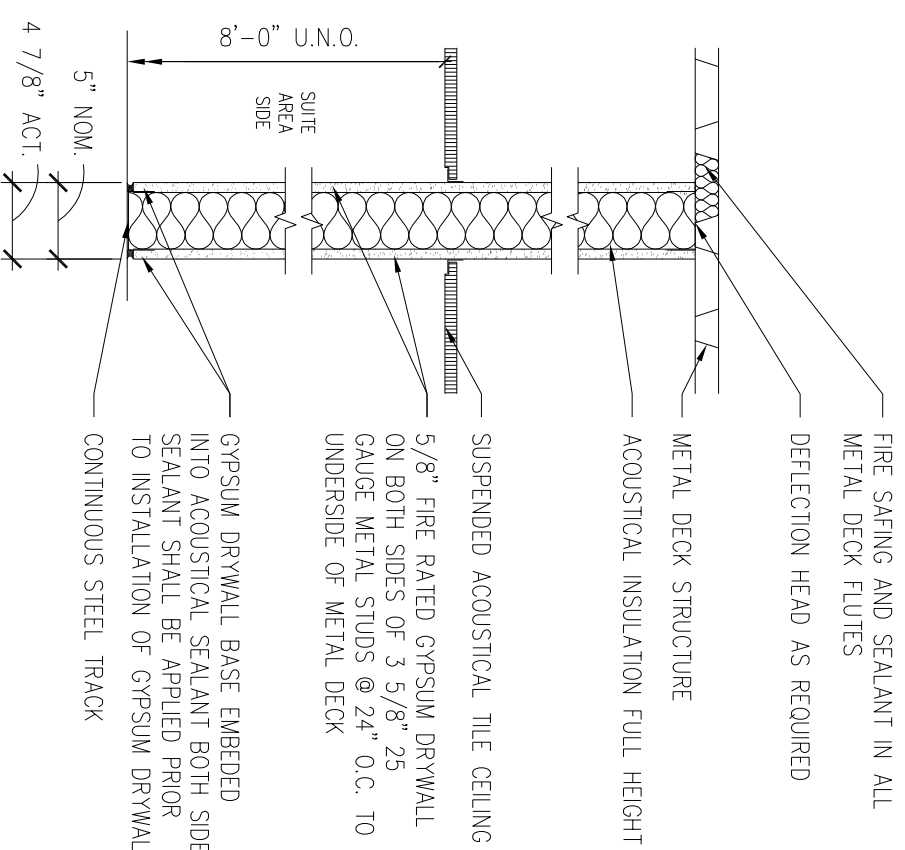
Revisions

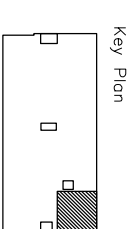
Sheet  
**Partition Types  
and Details**

Project  
**MERCY HOSPITAL  
Medical Office Bldg.  
Portland, Maine  
Casco Bay  
Gastroenterology  
Suite 490**

Date  
**February 22, 2008**  
Project No.  
**F07-5256.08**

Sheet No.  
**A10.1**





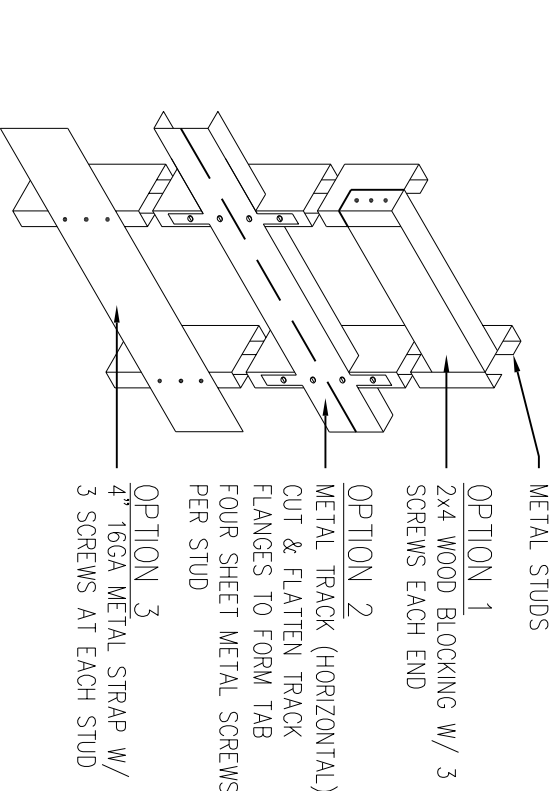
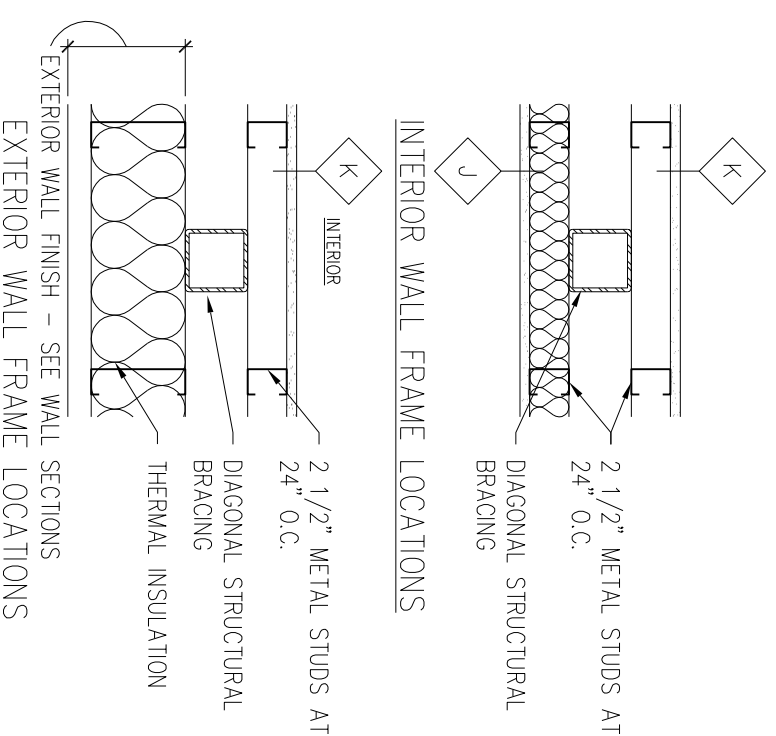
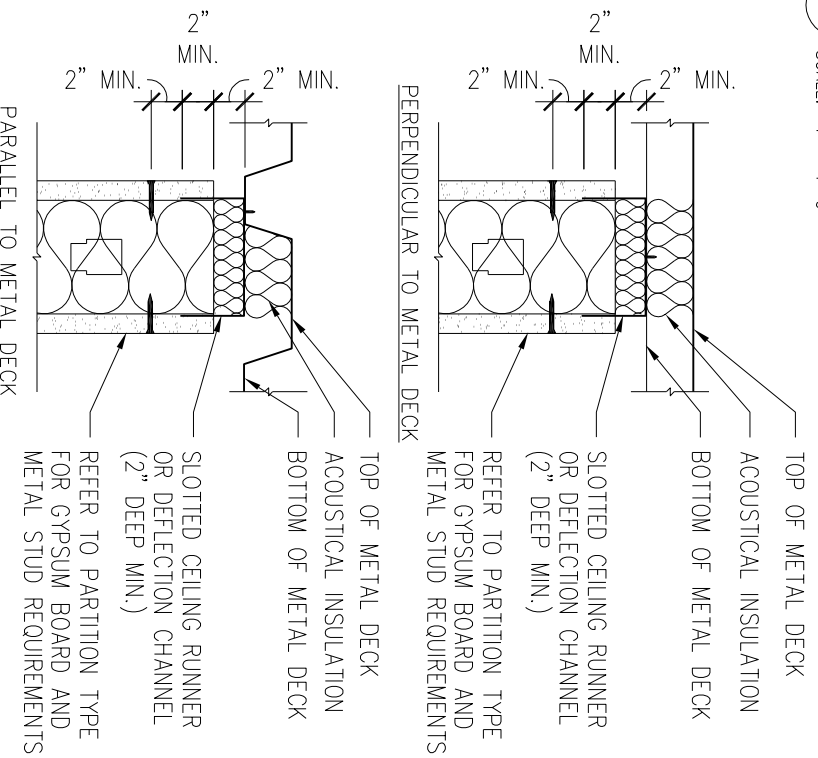
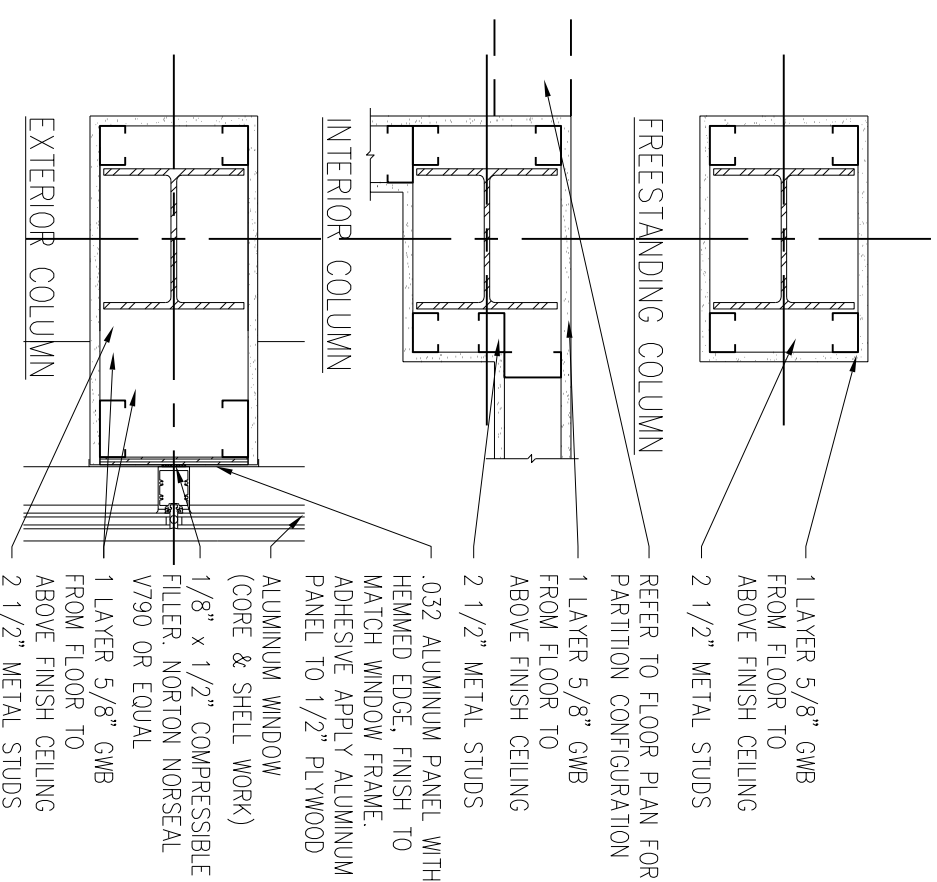
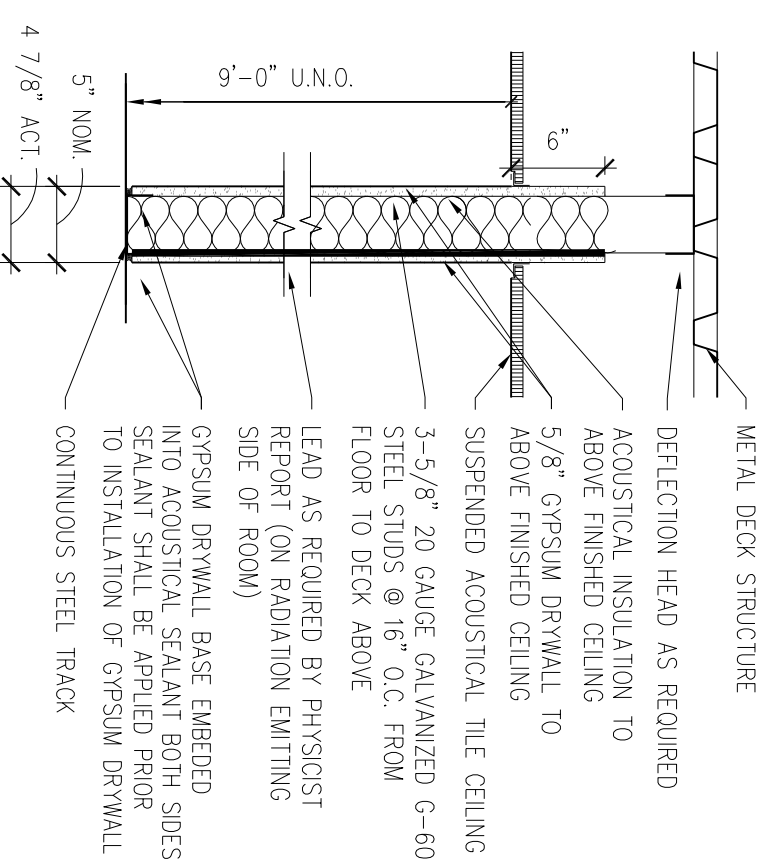
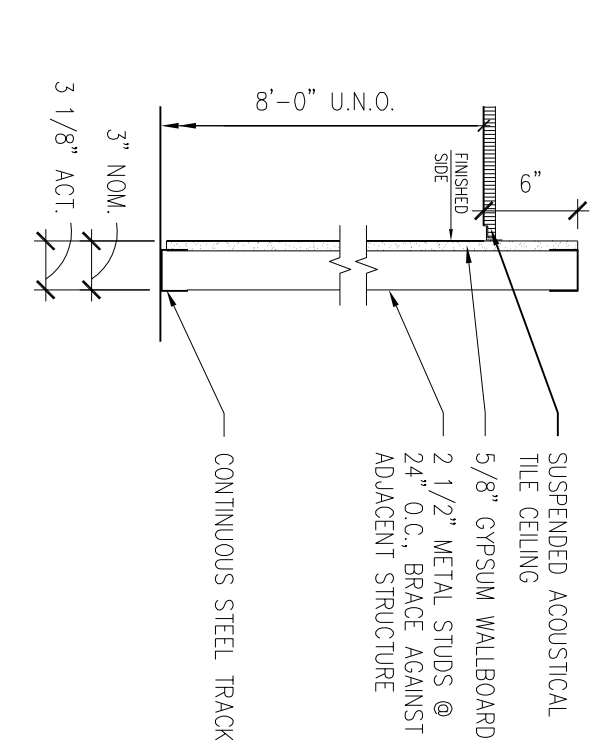
Revisions

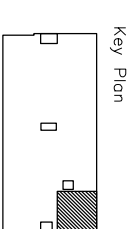
Sheet  
**Partition Types  
and Details**

Project  
**MERCY HOSPITAL  
Medical Office Bldg.  
Portland, Maine  
Casco Bay  
Gastroenterology  
Suite 490**

Date  
**February 22, 2008**  
Project No.  
**F07-5256.08**

Sheet No.  
**A10.2**





Revisions

Sheet  
**Interior Details**

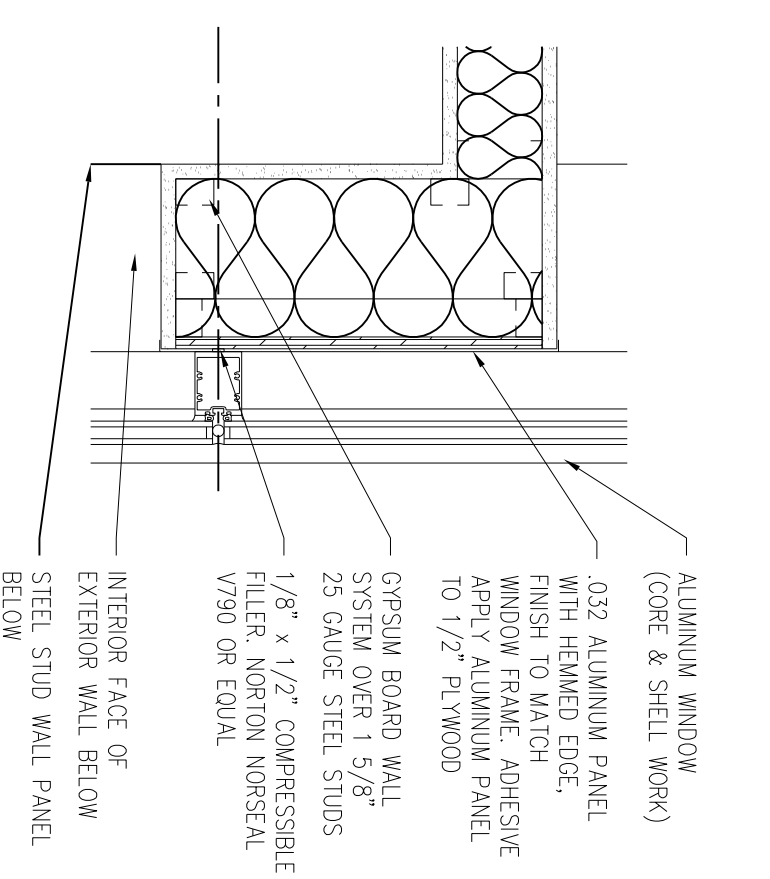
Project  
**MERCY HOSPITAL  
Medical Office Bldg.  
Portland, Maine  
Casco Bay  
Gastroenterology  
Suite 490**

Date  
**February 22, 2008**

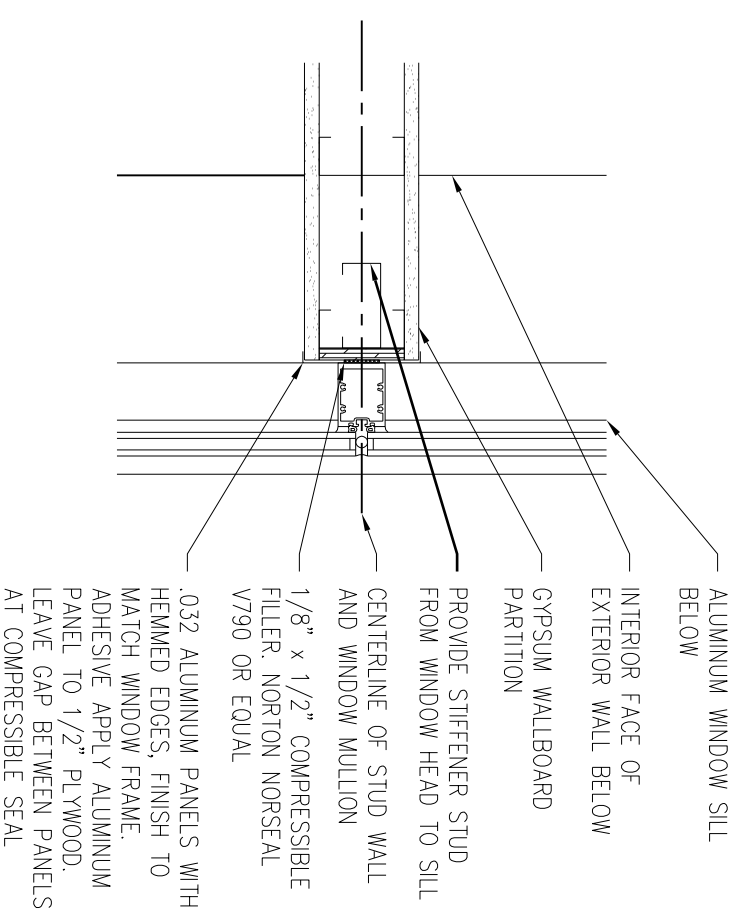
Project No.  
**F07-5256.08**

Sheet No.

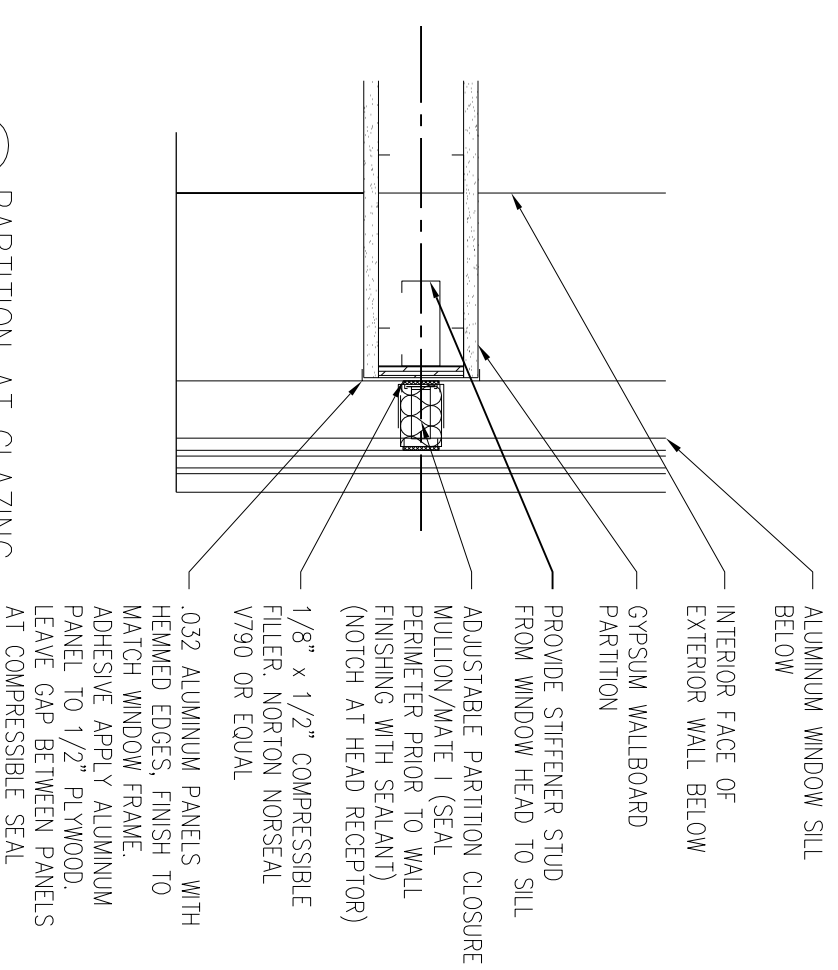
**A10.3**



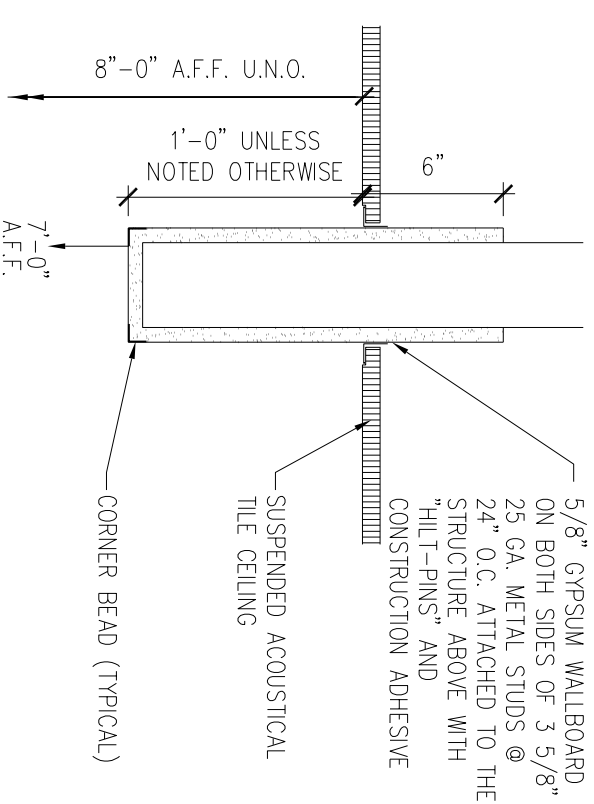
1 PARTITION TO MULLION  
SCALE: 1 1/2" = 1'-0"



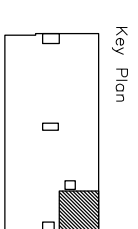
3 PARTITION AT MULLION  
SCALE: 1 1/2" = 1'-0"



2 PARTITION AT GLAZING  
SCALE: 1 1/2" = 1'-0"



4 DROPPED HEADER  
SCALE: 1 1/2" = 1'-0"



Revisions

Sheet  
**Interior Details**

Project  
**MERCY HOSPITAL  
Medical Office Bldg.  
Portland, Maine  
Casco Bay  
Gastroenterology  
Suite 490**

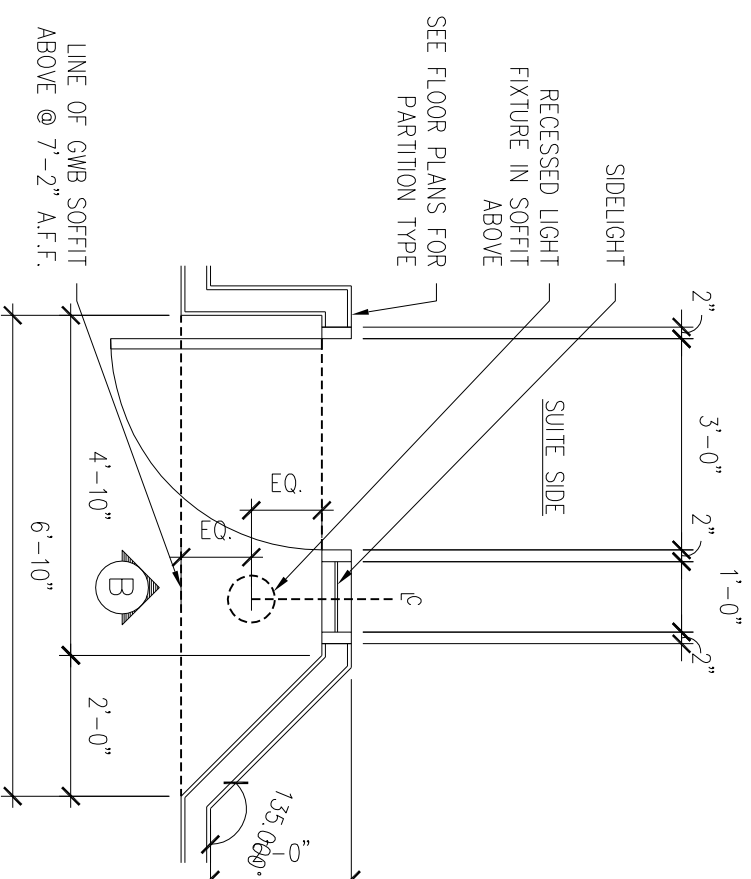
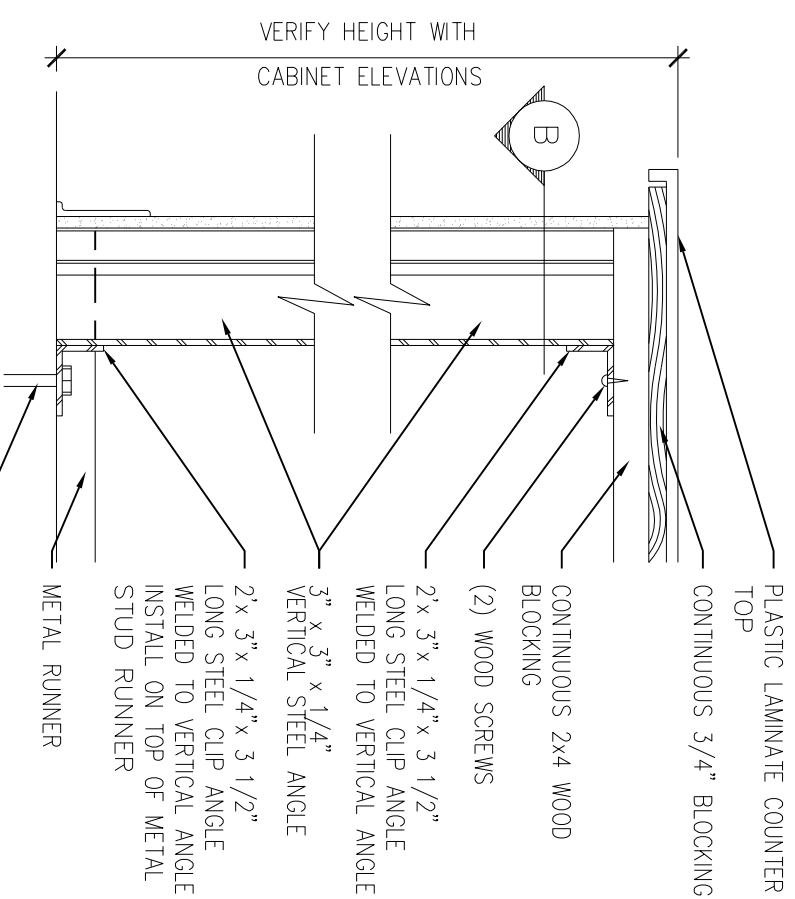
Date  
**February 22, 2008**

Project No.  
**F07-5256.08**

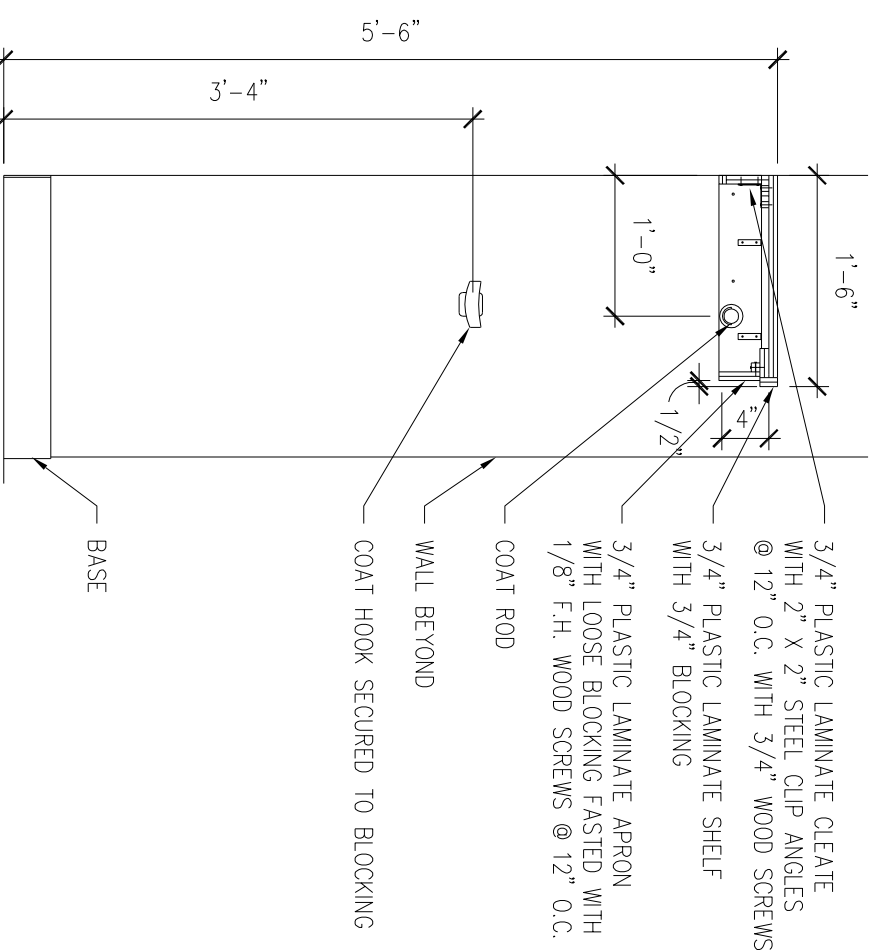
Sheet No.  
**A10.4**

# DETAIL NOT USED

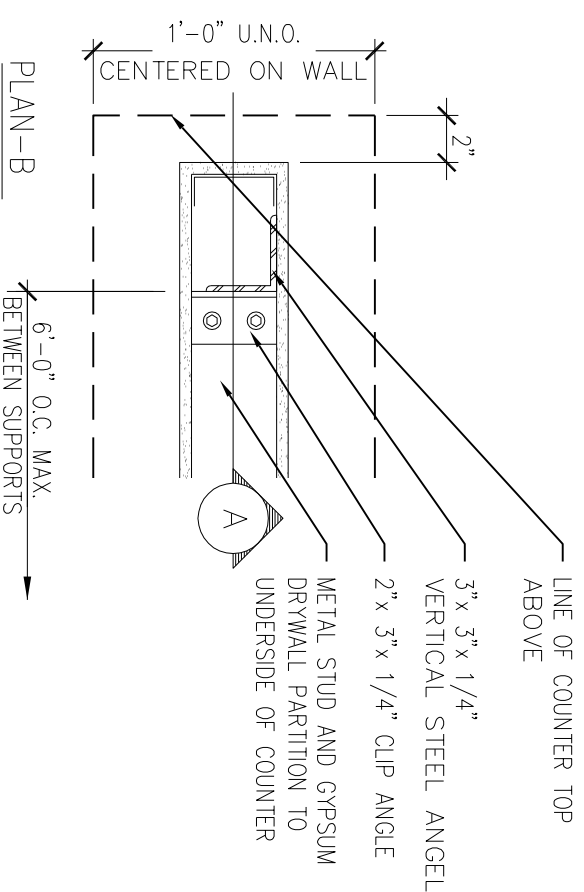
1 NURSE STATION COUNTER  
SCALE: 3/4" = 1'-0"



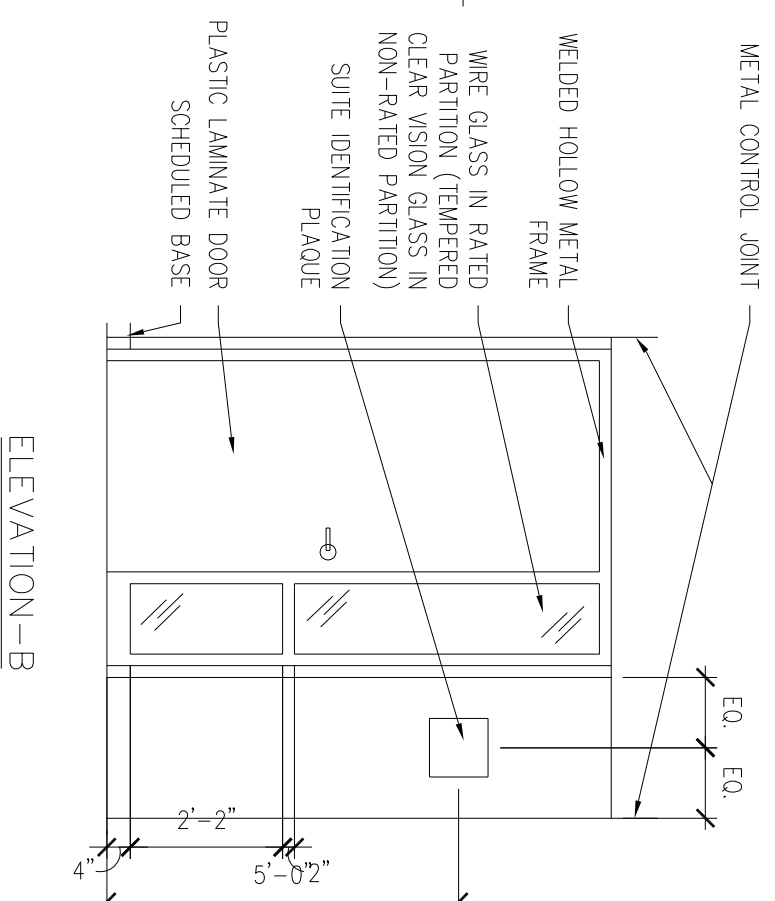
PLAN-A



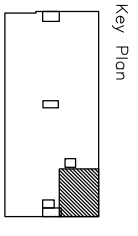
2 COAT RACK  
SCALE: 3/4" = 1'-0"



3 WALL BRACE  
SCALE: 1 1/2" = 1'-0"



4 RECESSED SUITE ENTRY  
SCALE: 3/8" = 1'-0"



Revisions

Sheet  
**Interior Details**

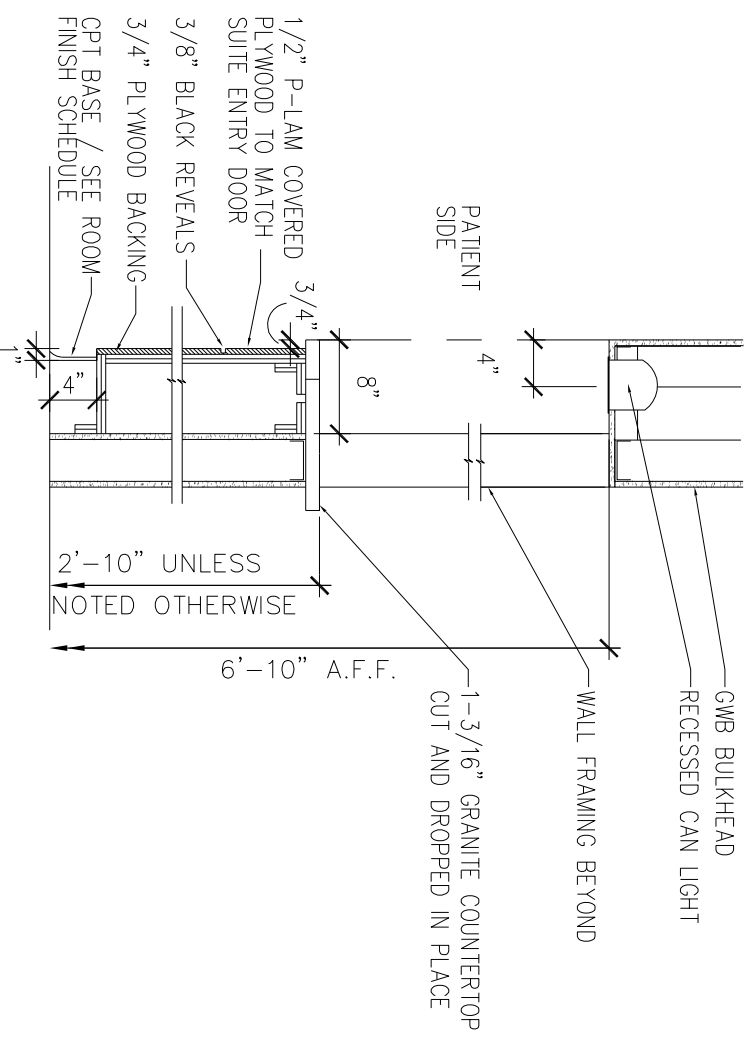
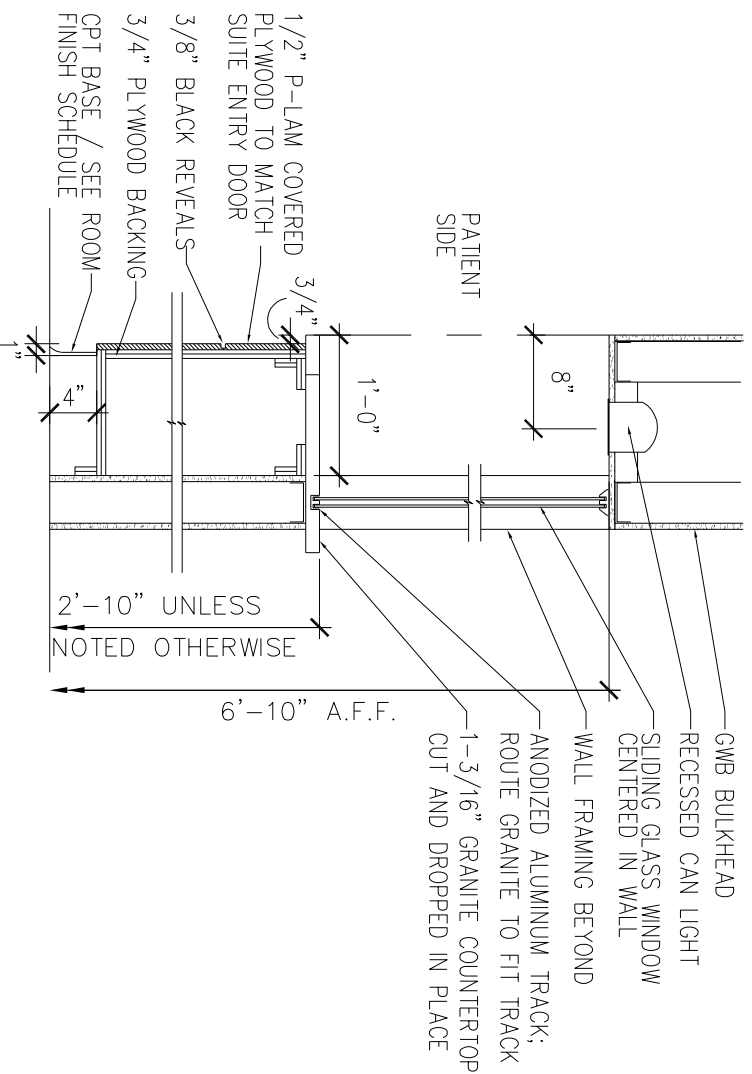
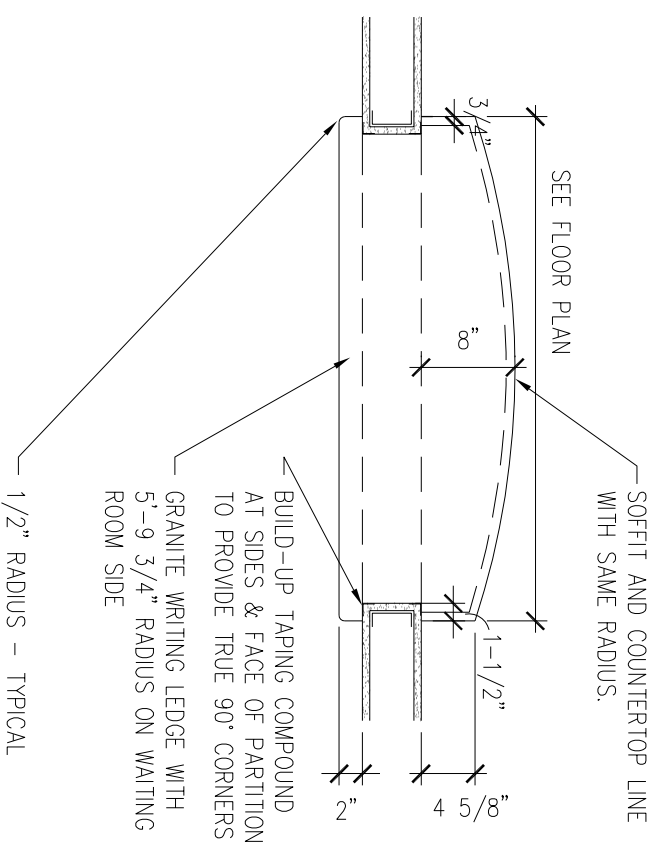
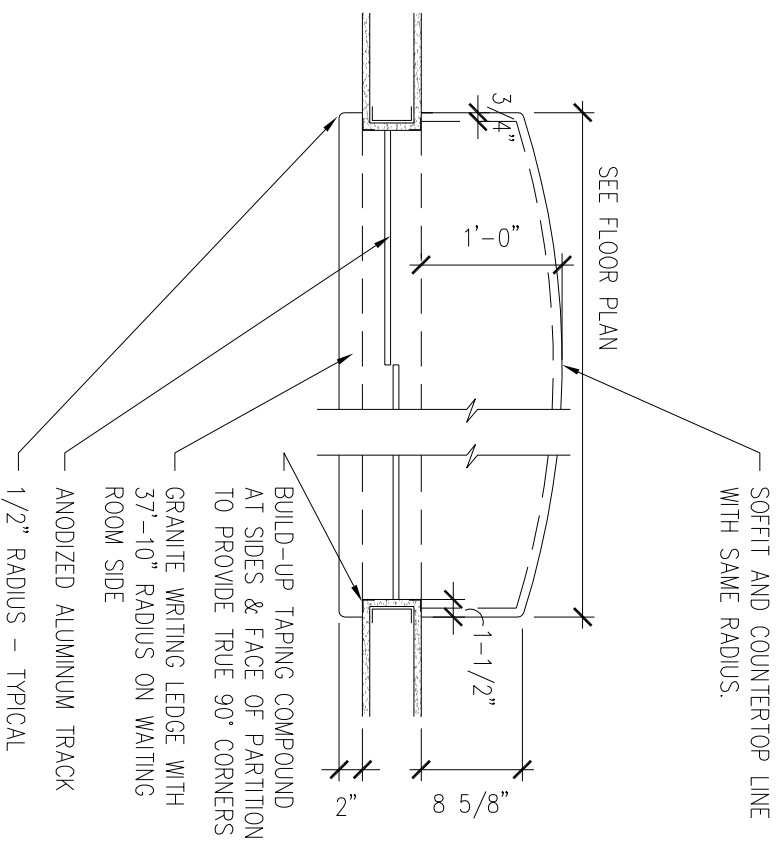
Project  
**MERCY HOSPITAL  
Medical Office Bldg.  
Portland, Maine  
Casco Bay  
Gastroenterology  
Suite 490**

Date  
**February 22, 2008**

Project No.  
**F07-5256.08**

Sheet No.

**A10.5**



**1** CHECK-IN COUNTER  
SCALE: 3/4" = 1'-0"

**2** CHECK-OUT COUNTER  
SCALE: 3/4" = 1'-0"



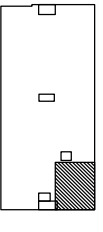


FURNISHINGS, FIXTURES AND EQUIPMENT SCHEDULE

ROOM NO.	ITEM NO.	EQUIPMENT NAME	ROOM LOCATION	SIZE	FURNISHED BY	INSTALLED BY	ROUGH-IN ONLY BY CONTRACTOR	EQUIPMENT BOOK	NOTES
4907	E.01	UNDERCOUNTER FRIDGE	RECEPTION OFFICE	-	OWNER	OWNER	-	-	-
4909	E.02	VITALS MACHINE	VITALS - CORRIDOR	-	OWNER	OWNER	-	-	-
-	E.03	-	-	-	-	-	-	-	-
-	E.04	-	-	-	-	-	-	-	-
-	E.05	-	-	-	-	-	-	-	-
-	E.06	-	-	-	-	-	-	-	-
-	E.000	-	-	-	-	-	-	-	-
-	E.000	-	-	-	-	-	-	-	-
-	E.000	-	-	-	-	-	-	-	-
-	E.000	-	-	-	-	-	-	-	-

**LANDMARK HEALTHCARE FACILITIES, LLC**  
 839 North Jefferson Street  
 Milwaukee, Wisconsin 53202  
 Telephone: (414) 277-0500  
 Facsimile: (414) 277-1055

Key Plan



Revisions

Equipment by  
 Tenant Schedule

GENERAL NOTES

1. ALL CONSTRUCTION SHALL BE COORDINATED WITH REQUIREMENTS OF THE TENANT'S FURNISHINGS FIXTURES AND EQUIPMENT.
2. INFORMATION CONTAINED IN THESE DOCUMENTS IS FOR REFERENCE ONLY.
3. ALL FREESTANDING FURNITURE AND EQUIPMENT TO BE PROVIDED BY TENANT. FREESTANDING FURNITURE SHOWN FOR REFERENCE ONLY.

Project  
**MERCY HOSPITAL**  
 Medical Office Bldg.  
 Portland, Maine  
 Casco Bay  
 Gastroenterology  
 Suite 490

Date  
**February 22, 2008**

Project No.  
**F07-5256.08**

Sheet No.  
**A11.2**