

FUNNEL DRAIN ABOVE CEILING DETAIL (G10)  
NOT TO SCALE

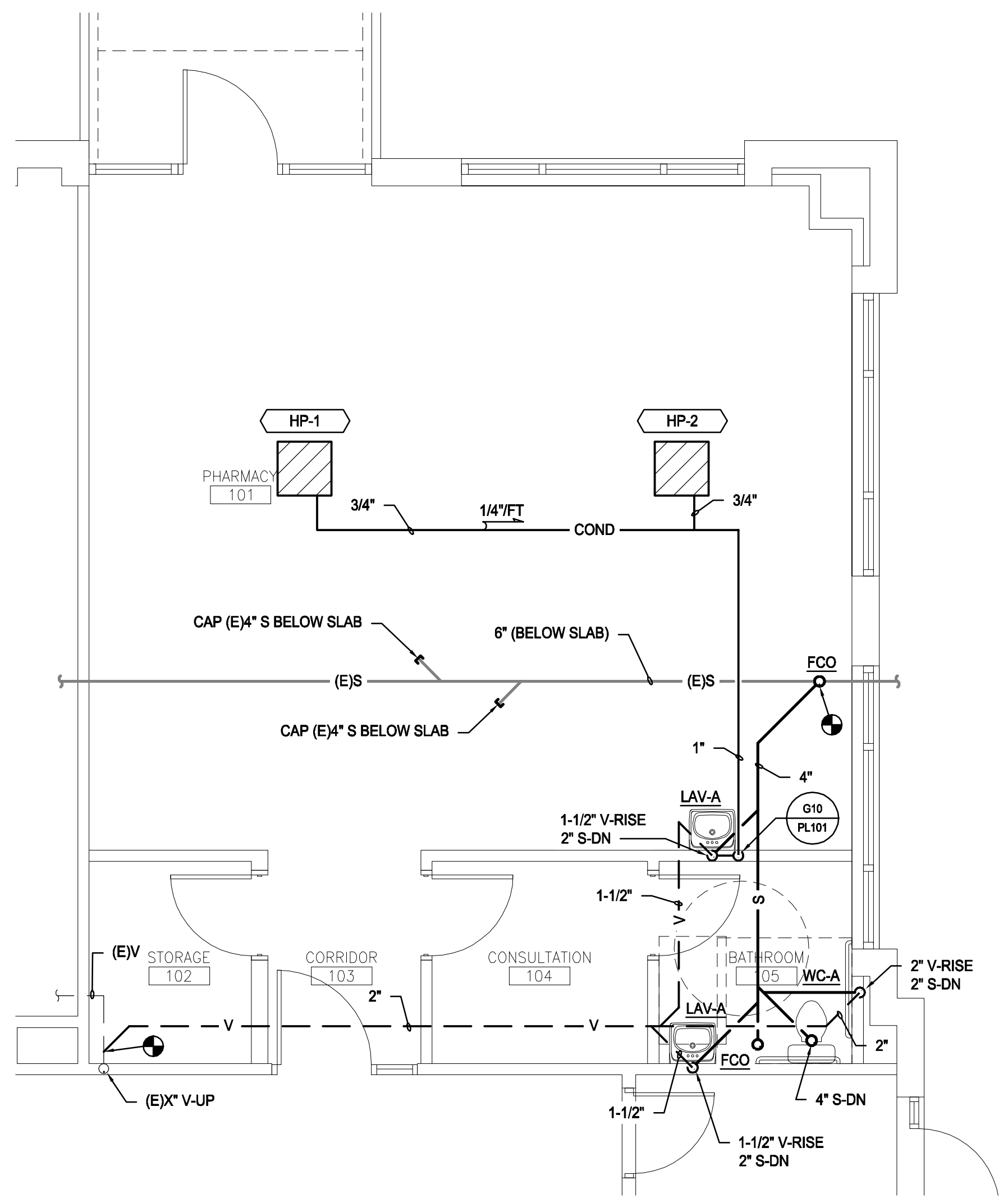
| PLUMBING FIXTURE SCHEDULE |                                  |   |  |  |   |       |
|---------------------------|----------------------------------|---|--|--|---|-------|
| TAG                       | DESCRIPTION                      | FIXTURE   | FAUCET/DRAIN   | TRIM   | SUPPORT   | NOTES |
| WC-A                      | FLOOR MOUNTED WATER CLOSET - ADA | AMERICAN STANDARD #3461.001 "MADERA" VITREOUS CHINA, SIPHON JET TYPE, 1-1/2" TOP SPUD, "EVERCLEAN" SURFACE COATING. | SLOAN "ROYAL" FLUSHOMETER #111-1.28 EXPOSED FLUSH VALVE, 1.28 GPF                        | CHURCH #8500 SSCT SEAT - WHITE   | -   | 1     |
| LAV-A                     | WALL HUNG LAVATORY - ADA         | AMERICAN STANDARD # 0385.012 "LUCERNE" VITREOUS CHINA, 20"x18", (3) HOLES ON 2" CENTERS.                            | CHICAGO #VE2805-317CP 0.5 GPM FAUCET, CHICAGO #337-CP GRID DRAIN, CHROME PLATED FINISHES | McGUIRE #170LK LOOSE KEY ANGLE STOPS, ESCUTCHEONS AND RISERS-CHROME PLATED | ZURN #Z-1231-EZ CONCEALED ARM LAVATORY SUPPORT SYSTEM | 2     |

NOTES:  
 1. MOUNT FLUSH LEVER AT ADA TOILET ON SIDE AWAY FROM WALL.  
 2. PROTECT EXPOSED PIPED WITH TRUEBRO #102-EZ INSULATION KIT.

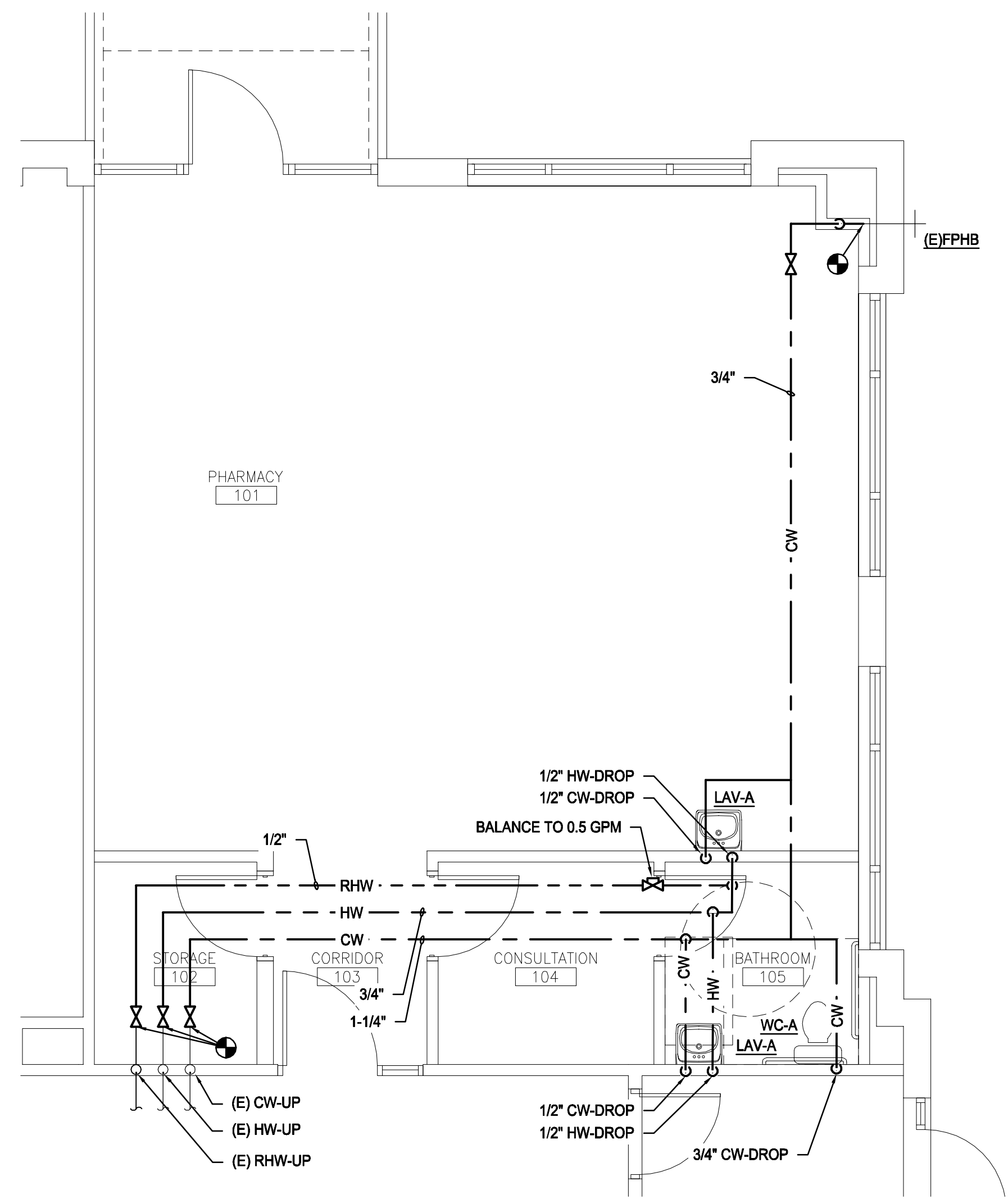
| PLUMBING FIXTURE CONNECTION SCHEDULE |        |      |        |        |       |
|--------------------------------------|--------|------|--------|--------|-------|
| FIXTURE                              | CW     | HW   | WASTE  | VENT   | NOTES |
| FLUSH VALVE WATER CLOSET             | 1-1/4" | -    | 4"     | 2"     | 1     |
| LAVATORY                             | 1/2"   | 1/2" | 1-1/2" | 1-1/2" | 2     |

NOTES:  
 1. PROVIDE SHOCK ABSORBER W/ ISOLATION VALVE ACCESSIBLE  
 2. PROVIDE AIR CHAMBERS ON HW & CW CONNECTIONS

| SHOCK ABSORBER SCHEDULE |                     |                 |            |
|-------------------------|---------------------|-----------------|------------|
| TYPE                    | FIXTURE UNIT RATING | BASIS OF DESIGN |            |
|                         |                     | MANUF.          | FIGURE NO. |
| A'                      | 1-10                | ZURN            | 100        |
| B'                      | 12-32               | ZURN            | 200        |
| C'                      | 33-60               | ZURN            | 300        |
| D'                      | 61-113              | ZURN            | 400        |
| E'                      | 114-164             | ZURN            | 500        |
| F'                      | 155-330             | ZURN            | 600        |



FIRST FLOOR DWV PIPING PLAN (A9)  
1/4" = 1'-0"



FIRST FLOOR SUPPLY PIPING PLAN (A2)  
1/4" = 1'-0"

GENERAL NOTE:

SEE P-001 FOR LEGEND AND ABBREVIATIONS.

KEYED NOTES:

| REV | DESCRIPTION | DATE   |
|-----|-------------|--------|
| 0   | PERMIT SET  | 7-1-16 |

PERMIT SET  
7-1-16

CURRENT ISSUE STATUS:

PROJECT NORTH:

SMRT Architects and Engineers  
 144 Fore Street  
 Portland, Maine 04104  
 1.877.700.7678  
 www.smrtinc.com

ARCHITECTURE | ENGINEERING | PLANNING | INTERIORS | ENERGY

MILLER DRUG FITUP  
 MERCY FORE RIVER MOB

195 Fore River Parkway, Portland, ME 04102

FIRST FLOOR PLUMBING PLANS

SHEET TITLE:

SCALE: AS NOTED

PROJECT MANAGER: KD PROJECT NO: 16087

A/E OF RECORD: C/JH

JOB CAPTAIN: SHK

DRAWN BY: CWF

SMRT FILE: PL101-16087 SHEET No. PL101