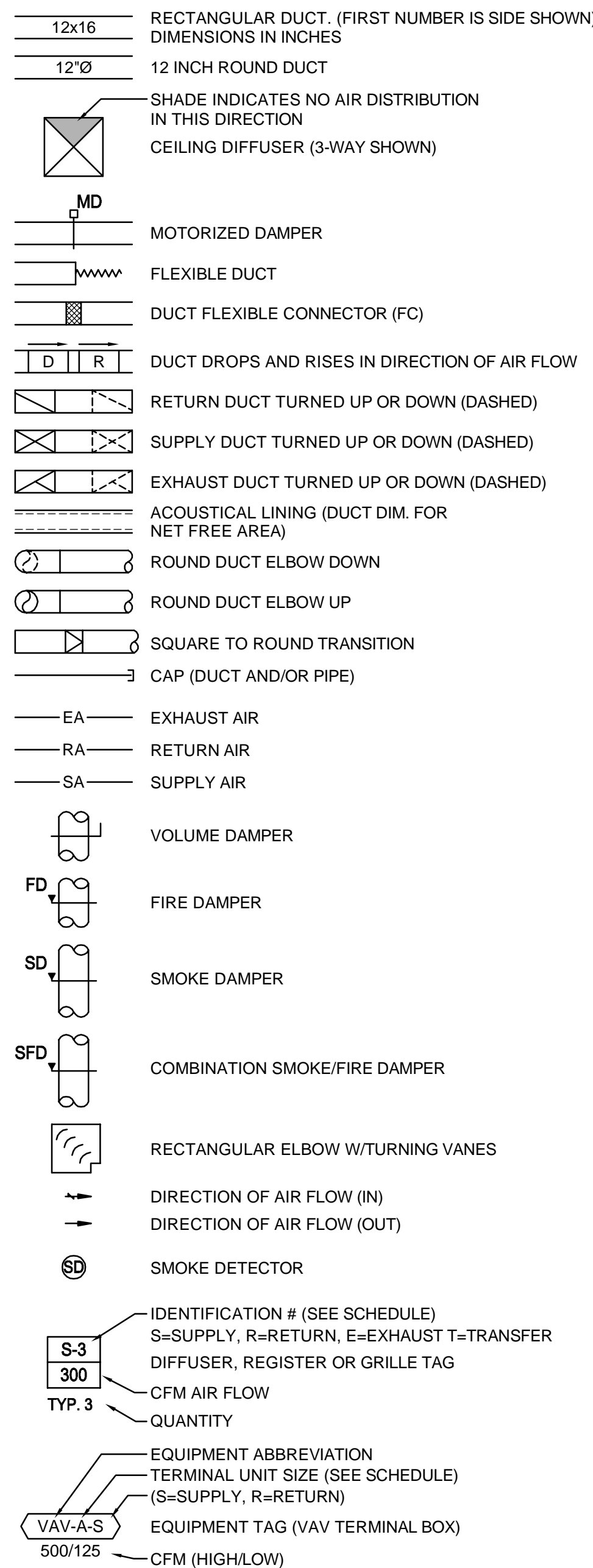
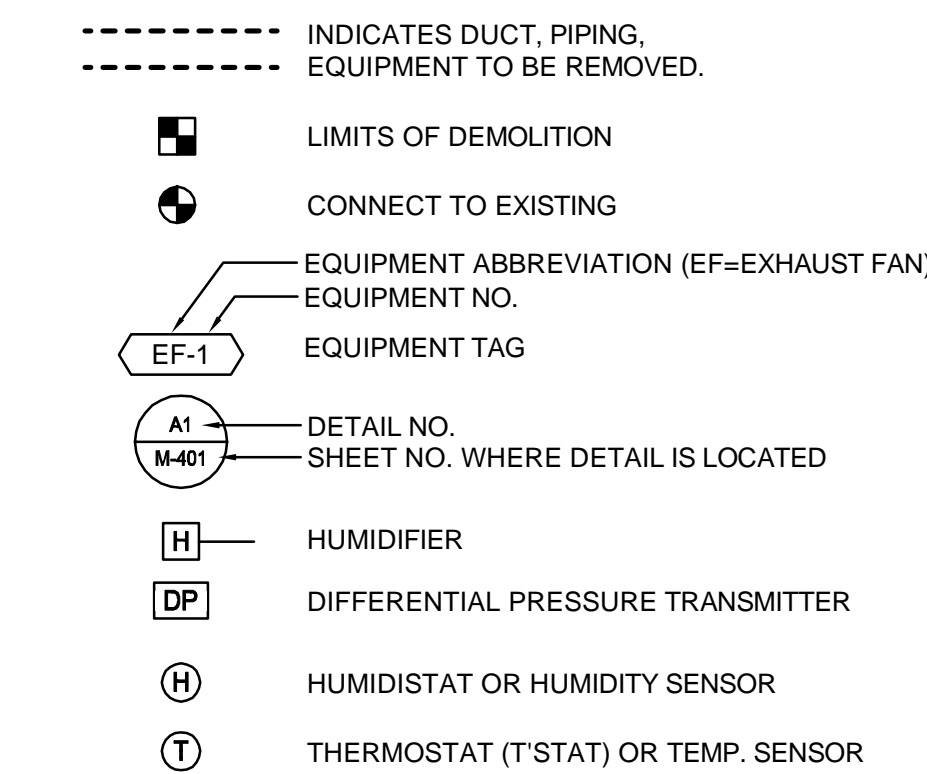


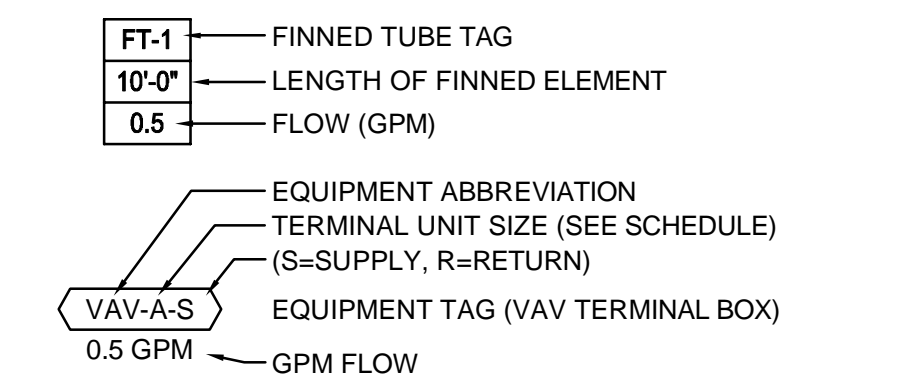
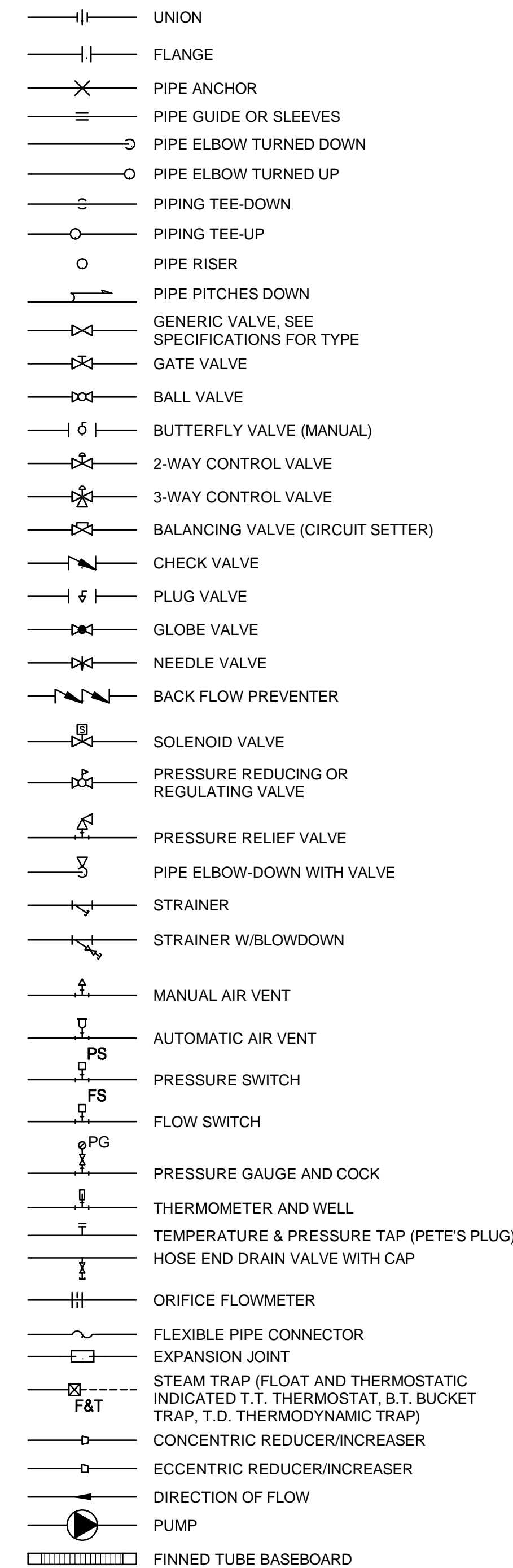
### AIR DISTRIBUTION SYMBOLS



### GENERAL SYMBOLS



### PIPING SYMBOLS



### ABBREVIATIONS

AAV	AUTOMATIC AIR VENT	ENC	ENCLOSURE	PSE	PROCESS SOLVENT EXHAUST
ACC	AIR COOLED CONDENSER	ER	EXHAUST REGISTER	PP	POLY-PROPYLENE
ACU	AIR CONDITIONING UNIT	(E)	EXISTING	PPE	PRE PURCHASED EQUIPMENT
ACV	AUTOMATIC CONTROL VALVE	EXIST.	EXISTING	PRS	PRESSURE REDUCING STATION
AD	ACCESS DOOR	FBO	FURNISHED BY OWNER	PRV	PRESSURE REDUCING VALVE
AE	ACID EXHAUST	FBP	FACE AND BYPASS	PVD	PNEUMATIC VOLUME DAMPER
AFF	ABOVE FINISHED FLOOR	FC	FLEXIBLE CONNECTION	(R)	REMOVE
AFMS	AIR FLOW MEASURING STATION	FD	FIRE DAMPER	RA	RETURN AIR
AHU	AIR HANDLING UNIT	FG	FIBERGLASS	(REL.)	RELOCATED
ATC	AUTOMATIC TEMPERATURE CONTROL	F & T	FLOAT AND THERMOSTATIC	RF	RETURN FAN
AV	AIR VENT	FO	FLAT OVAL	RG	RETURN GRILLE
BB	BASEBOARD	FTR	FINNED TUBE RADIATION	RHC	REHEAT COIL
BDD	BACKDRAFT DAMPER	FS	FLOW SWITCH	RM	ROOM
BG	BLAST GATE	GC	GENERAL CONTRACTOR	RR	RETURN REGISTER
BLDG	BUILDING	GPM	GALLONS PER MINUTE	RV	RELIEF VALVE
BOD	BOTTOM OF DUCT	H	HUMIDIFIER	SA	SUPPLY AIR
BOP	BOTTOM OF PIPE	HB	HOSE BIB	SCV	SELF CONTAINED VALVE
BTU	BRITISH THERMAL UNIT	HRU	HEAT RECOVERY UNIT	SD	SMOKE DETECTOR
CBD	COUNTER BALANCED DAMPER	HTR	HEATER	SF	SUPPLY FAN
CD	CEILING DIFFUSER	H & V	HEATING AND VENTILATION	SG	SUPPLY GRILLE
CFE	CAPPED FOR FUTURE	HVAC	HEATING, VENTILATING AND AIR CONDITIONING	SR	SUPPLY REGISTER
CFM	CUBIC FEET PER MINUTE	HW	HOT WATER	SS	STAINLESS STEEL
CLG	CEILING	HX	HEAT EXCHANGER	TE	TEMPERATURIZED ELEMENT (SENSOR)
CONT	CONTINUATION	IN WG	INCHES WATER GAUGE	TG	TRANSFER GRILLE
COORD	COORDINATE	LD	LINED DUCT	TOD	TOP OF DUCT
CP	CONDENSATE PUMP & RECEIVER	MAU	MAKE UP AIR UNIT	TOP	TOP OF PIPE
CT	COOLING TOWER	MAX	MAXIMUM	TTS	TIGHT TO STEEL
CTE	CONNECT TO EXISTING	MBH	1000 BTU/HR.	TV	TURNING VANE(S)
CU	COPPER	ME	MECHANICAL ENGINEER	TYP	TYPICAL
CUH	CABINET UNIT HEATER	MFR	MANUFACTURER	UH	UNIT HEATER
CV	CONTROL VALVE	MIN	MINIMUM	UIC	UP IN CHASE
CW	COLD WATER	MD	MOTOR OPERATED DAMPER	UIW	UP IN WALL
DC	DOUBLE CONTAINED	MPV	MULTI-PURPOSE VALVE	UV	UNIT VENTILATOR
DDC	DIRECT DIGITAL CONTROL	MTD	MOUNTED	VAV	VARIABLE AIR VOLUME BOX
DIA	DIAMETER	MUA	MAKE UP AIR	VB	VACUUM BREAKER
DIC	DOWN IN CHASE	NPW	NON-POTABLE WATER	VTR	VENT THRU ROOF
DIW	DOWN IN WALL	NTS	NOT TO SCALE	VD	MANUAL VOLUME DAMPER
DN	DOWN	OA	OUTSIDE AIR	VCFF	VALVED AND CAPPED FOR FUTURE
DT	DROP AND TRANSITION	OBD	OPPOSED BLADE DAMPER	VFD	VARIABLE FREQUENCY DRIVE
DWG	DRAWING	OED	OPEN ENDED DUCT	VOC	VOLATILE ORGANIC COMPOUNDS
DWH	DOMESTIC WATER HEATER	PAE	PROCESS ACID EXHAUST	W/	WITH
EA	EXHAUST AIR	PHE	PROCESS HEAT EXHAUST		
EF	EXHAUST FAN				

### PIPING SYSTEMS

CD	CONDENSATE DRAIN	HG	HOT GAS	R	RELIEF LINE
CHWS	CHILLED WATER SUPPLY	HPS	HIGH PRESSURE STEAM	RL	REFRIGERANT LIQUID
CHWR	CHILLED WATER RETURN	HPR	HIGH PRESSURE CONDENSATE RETURN	RS	REFRIGERANT SUCTION
CWS	CONDENSER WATER SUPPLY	HWS	HOT WATER SUPPLY	TWS	TEMPERED CHILLED WATER SUPPLY
CWR	CONDENSER WATER RETURN	HWR	HOT WATER RETURN	TWR	TEMPERED CHILLED WATER RETURN
DB	DISTRIBUTION VALVE BOX	LPS	LOW PRESSURE STEAM	ZB	ZONE VALVE BOX
FCS	FREE COOLING SUPPLY	LPR	LOW PRESSURE RETURN		
FCR	FREE COOLING RETURN	MPS	MEDIUM PRESSURE STEAM		
FOS	FUEL OIL SUPPLY	MPR	MEDIUM PRESSURE RETURN		
FOR	FUEL OIL RETURN	NPW	NON POTABLE COLD WATER		
FOV	FUEL OIL VENT	PCWS	PROCESS COOLING WATER SUPPLY		
GCR	GRAVITY STEAM CONDENSATE RETURN	PCWR	PROCESS COOLING WATER RETURN		
GLY	GLYCOL	PC	PUMPED STEAM CONDENSATE		
HCR	HOT/ CHILLED WATER RETURN	PD	PUMPED DISCHARGE		
HCS	HOT/ CHILLED WATER SUPPLY	PW	POTABLE WATER		

**GENERAL NOTE**  
 1. ALL GENERAL NOTES, SYMBOL LISTS, AND DETAILS ARE TO BE CONSIDERED AS APPLICABLE TO ALL HVAC AND PLUMBING DRAWINGS FOR THIS PROJECT. SYMBOLS AND ABBREVIATIONS SHOWN ON THIS SHEET ARE FOR REFERENCE ONLY AND DO NOT INDICATE THEIR INCORPORATION INTO THE DESIGN.

0	PERMIT SET	7-1-16
REV	DESCRIPTION	DATE

**PERMIT SET**  
7-1-16

CURRENT ISSUE STATUS:

SMRT Architects and Engineers  
 144 Fore Street  
 Portland, Maine 04104  
 1.877.700.7678  
 www.smrtinc.com

ARCHITECTURE | ENGINEERING | PLANNING | INTERIORS | ENERGY

**MILLER DRUG FITUP**  
**MERCY FORE RIVER MOB**

195 Fore River Parkway, Portland, ME 04102

**HVAC LEGEND AND ABBREVIATIONS**

SHEET TITLE:

SCALE: AS NOTED

PROJECT MANAGER:	KD	PROJECT NO.:	16087
A/E OF RECORD:	CJH		
JOB CAPTAIN:	SHK		
DRAWN BY:	CWF		
SMRT FILE:	M-001-16087	SHEET No.:	M-001

© COPYRIGHT 2015 SMRT INC.