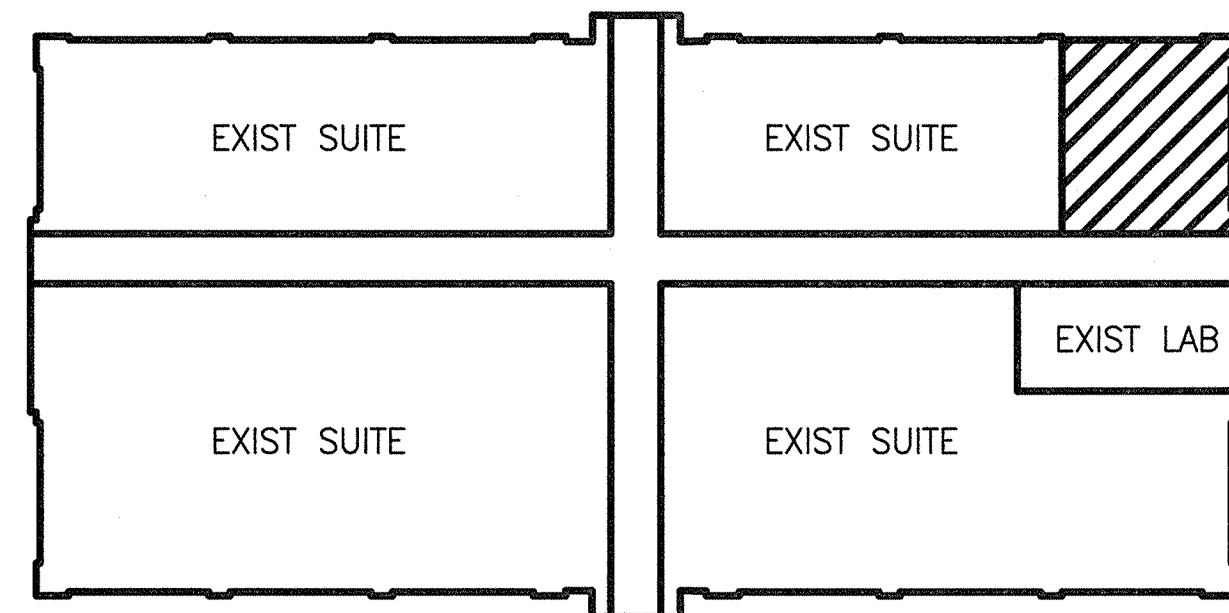


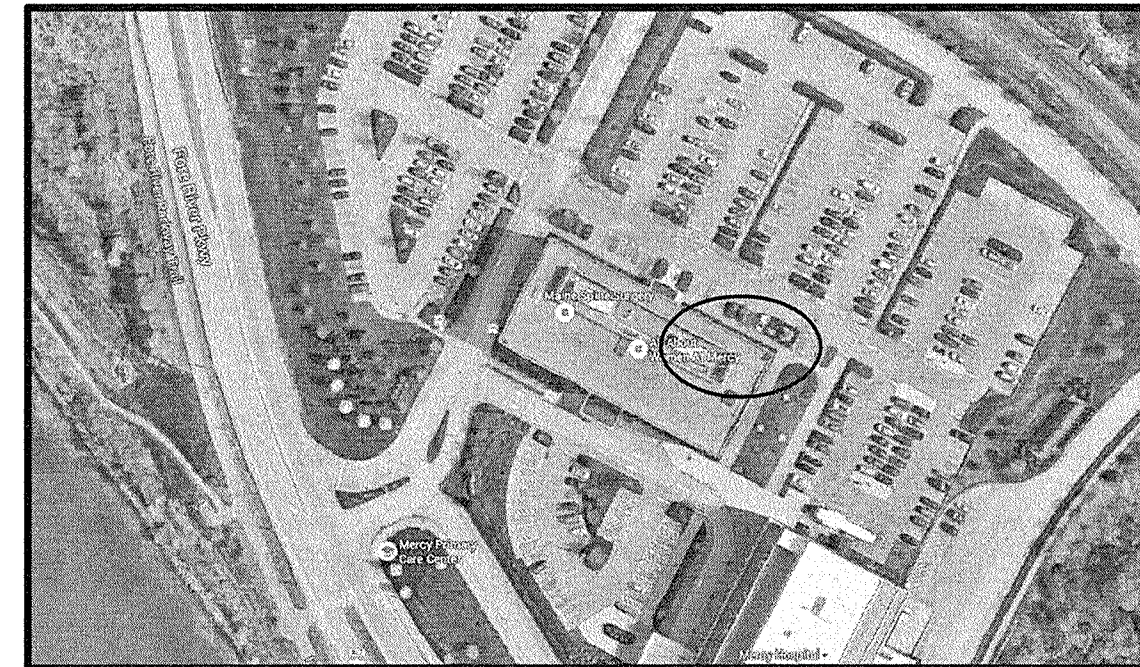
MILLER DRUG FITUP - MERCY FORE RIVER MOB

PORTLAND, MAINE

KEY PLAN



PROJECT LOCATION



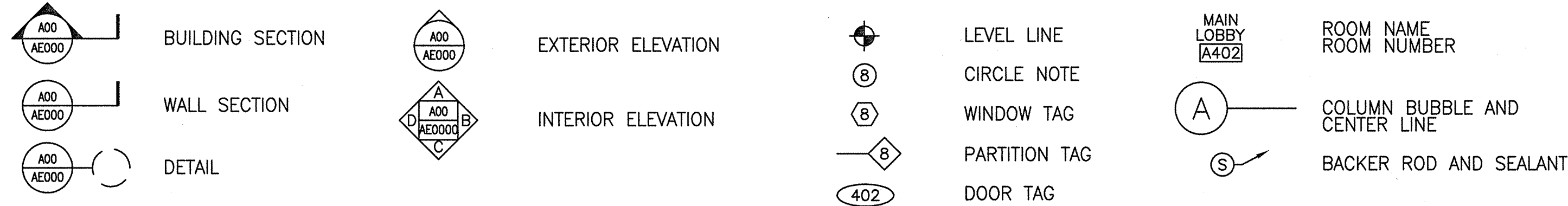
DRAWING LIST

<u>GENERAL</u>	
G1001	COVER SHEET
<u>ARCHITECTURAL</u>	
A-001	LIFE SAFETY AND WALL TYPES
AE101	FLOOR PLANS
AE121	REFLECTED CEILING PLAN
AE201	ELEVATIONS & SECTIONS
AE601	SCHEDULES & DETAILS
<u>STRUCTURAL</u>	
SG001	STRUCTURAL GENERAL NOTES
SF101	CANOPY FRAMING PLAN
<u>MECHANICAL</u>	
M-001	HVAC LEGEND & ABBREVIATIONS
M-002	HVAC SPECIFICATIONS
MH101	FIRST FLOOR HVAC DUCTWORK & PIPING PLAN
<u>PLUMBING</u>	
P-001	PLUMBING LEGEND & ABBREVIATIONS
P-002	PLUMBING SPECIFICATIONS
PL101	FIRST FLOOR PLUMBING PLANS
<u>ELECTRICAL</u>	
E-001	LEGEND AND GENERAL NOTES
E-002	SPECIFICATIONS
E-003	SPECIFICATIONS
E-004	SPECIFICATIONS
E-101	FIRST FLOOR ELECTRICAL PLANS

PROJECT GENERAL NOTES:

- FIELD VERIFY ALL DIMENSIONS AND LAYOUT PRIOR TO PROCEEDING WITH WORK. NOTIFY ARCHITECT IN WRITING OF ANY DISCREPANCIES OR INCONSISTENCIES. FAILURE TO REPORT ANY DISCREPANCIES WITHIN THESE CONSTRUCTION DOCUMENTS TO THE ARCHITECT WILL NOT BE GROUNDS FOR ADDITIONAL COST OR CHANGE ORDERS.
- CONTRACTOR SHALL BE RESPONSIBLE FOR PROVIDING ALL MATERIALS (UNLESS NOTED OTHERWISE), AND WORKMANSHIP IN ACCORDANCE WITH FEDERAL, STATE, CITY AND LOCAL BUILDING CODES AND THEIR REQUIREMENTS.
- CONTRACTOR AND ALL TRADES SHALL NOTE REQUIREMENTS OF "GENERAL NOTES" ON ALL SHEETS.
- EACH TRADE TO PROVIDE SMOKE OR FIRE SEALANT AT PENETRATIONS AS REQUIRED FOR WALL TYPE. ALL SEALANT, FIRE STOPPING, AND SMOKE STOPPING ASSEMBLIES SHALL BE U.L. RATED.
- DIMENSIONS ARE CENTERLINE OF STUD PARTITIONS, UNLESS INDICATED OTHERWISE.
- REFER TO ALL CONSTRUCTION DOCUMENTS FOR REQUIREMENTS WHICH MAY AFFECT THE WORK IN ANOTHER DISCIPLINE AND COORDINATE WORK.
- REFER TO DETAILS FOR ADDITIONAL DIMENSIONAL INFORMATION.
- DOOR JAMBS SHALL BE LOCATED 6" FROM CORNER IN STUD PARTITIONS, UNLESS INDICATED OTHERWISE.
- PROVIDE BLOCKING IN WALLS AS NECESSARY WHERE CASEWORK, SHELVES, HANDRAILS, AND MISC. EQUIPMENT ARE LOCATED.
- DO NOT SCALE DRAWINGS.
- "PROVIDE" MEANS "FURNISH AND INSTALL".
- ELEVATIONS INDICATED ON THE GENERAL, ARCHITECTURAL, MECHANICAL, ELECTRICAL, FIRE PROTECTION AND PLUMBING DRAWINGS ARE BASED ON AN ASSIGNED REFERENCE ELEVATION OF THE CONCRETE SLAB = 0'-0".

SYMBOL LEGEND



ABBREVIATIONS

AC, A/C	AIR CONDITIONING	FB	FLAT BAR	MB	MARKER BOARD	SACT	SUSPENDED ACOUSTIC
ACCU	AIR CONDITIONING CONDENSER UNIT	FBO	FURNISHED BY OTHERS	MDO	MEDIUM DENSITY OVERLAY	SC	TILE CEILING
ACPLAS	ACOUSTICAL PLASTER	FCO	FLOOR CLEAN-OUT	MO	MASONRY OPENING	SF	SOLID CORE
ACT	ACOUSTIC TILE	FCU	FAN COIL UNIT	MR	MOISTURE-RESISTANT	SK	SQUARE FOOT; SUPPLY FAN
AFF	ABOVE FINISHED FLOOR	FD	FLOOR DRAIN	MUA	MAKE-UP AIR	SN	SHEAR KEY
AP	ACCESS PANEL	FE	FIRE EXTINGUISHER			SP	SANITARY NAPKIN (DISPENSER)
		FF	FINISHED FLOOR; FAR FACE	N	NOSING	SS	SPECIAL
BCE	BOTTOM CHORD EXTENSION	FO	FRAMED OPENING	NIC	NOT IN CONTRACT	STL	STAINLESS STEEL
BD	BOARD	FRP	FIBERGLASS REINFORCED PLASTIC	NS	NEAR SIDE		STEEL
BEJ	BUILDING EXPANSION JOINT	FS	FLOOR SINK	NTS	NOT TO SCALE	T	TREAD
BLP	BORROWED LIGHT PANEL			OC	ON CENTER	TB	TACKBOARD
BO	BOTTOM OF	GB	GRAB BAR	OF	OUTSIDE FACE	T&B	TOP AND BOTTOM
BOF	BOTTOM OF FOOTING	GC	GENERAL CONTRACTOR	OH	OPPOSITE HAND; OVERHEAD	TBM	TEMPORARY BENCHMARK
BOS	BOTTOM OF STEEL	GDT	GYPNUM DROP-IN TILE			TCE	TOP CHORD EXTENSION
BS	BOTH SIDES	GRD	BUILDING GRID LINE	PA	PUBLIC ADDRESS	TJ	TIE JOIST
BSE	BRICK SHELF ELEVATION	GV	GRAVITY VENT	PAF	POWDER-ACTUATED FASTENER	TO	TOP OF
		GWB	GYPNUM WALL BOARD	PAF	POWDER-ACTUATED FASTENER	TOC	TOP OF CONCRETE
C	CHANNEL	H	HORIZONTAL	PEFS	PRECOMPRESSED EXPANDABLE	TOF	TOP OF FOOTING
CB	CATCH BASIN; CHALKBOARD	HC	HANDICAPPED; HOLLOW CORE	PL	PLATE	TOHC	TOP OF HOLLOW CORE
CEM BD	CEMENTITIOUS BACKER BOARD	HM	HOLLOW METAL	PLAM	PLASTIC LAMINATE	TOM	TOP OF MASONRY
CFM	CUBIC FEET PER MINUTE	HP	HIGH POINT	PLF	POUNDS PER LINEAR FOOT	TOP	TOP OF PIER
CIP	CAST IN PLACE	HRU	HEAT RECOVERY UNIT	PP	POWER PANEL	TOS	TOP OF STEEL; TOP OF SLAB
CJ	CONTROL JOINT; CONSTRUCTION	H&V	HEATING AND VENTILATING	PHC	PRECAST HOLLOW CORE	TOW	TOP OF WALL
		HVAC	HEATING, VENTILATING AND	PSF	POUNDS PER SQUARE FOOT	TP	TOILET PAPER (DISPENSER)
CMU	CONCRETE MASONRY UNIT	IF	INSIDE FACE			TS	
CT	CERAMIC TILE	IJ	ISOLATION JOINT	UH	UNIT HEATER		
CUH	CABINET UNIT HEATER	IMP	IMPACT RESISTANT	UNO	UNLESS NOTED OTHERWISE	V	VENT PIPE; VERTICAL
COL	COLUMN GRID LINE	INSUL	INSULATION			VB	VAPOR BARRIER
CONT	CONTINUOUS	INV	INVERT	PVC	POLYVINYL CHLORIDE	VCT	VINYL COMPOSITION TILE
		JS	JOIST SUBSTITUTE	R	RISER; RADIUS	VP	VISION PANEL
DF	DRINKING FOUNTAIN			RD	ROOF DRAIN	VTR	VENT THROUGH THE ROOF
DR	DISPLAY RAIL						
DW	DISHWASHER						

REV	DESCRIPTION	DATE
0	PERMIT SET	7-1-16

PERMIT SET
7-1-16

CURRENT ISSUE STATUS:

PROJECT NORTH:

SMRT Architects and Engineers
144 Fore Street
Portland, Maine 04104
1.877.700.7678
www.smrtinc.com

ARCHITECTURE | ENGINEERING | PLANNING | INTERIORS | ENERGY

**MILLER DRUG FITUP
MERCY FORE RIVER MOB**

195 Fore River Parkway, Portland, ME 04102

COVER SHEET

SHEET TITLE:

0 1/4" 1/2" 1" 2" 3"

SCALE: AS NOTED

PROJECT MANAGER:	KD	PROJECT NO:	16087
A/E OF RECORD:	KD		
JOB CAPTAIN:	SHK		
DRAWN BY:	SHK		
SMRT FILE:	G001-16087	SHEET No.	G1001

© COPYRIGHT 2015 SMRT INC.