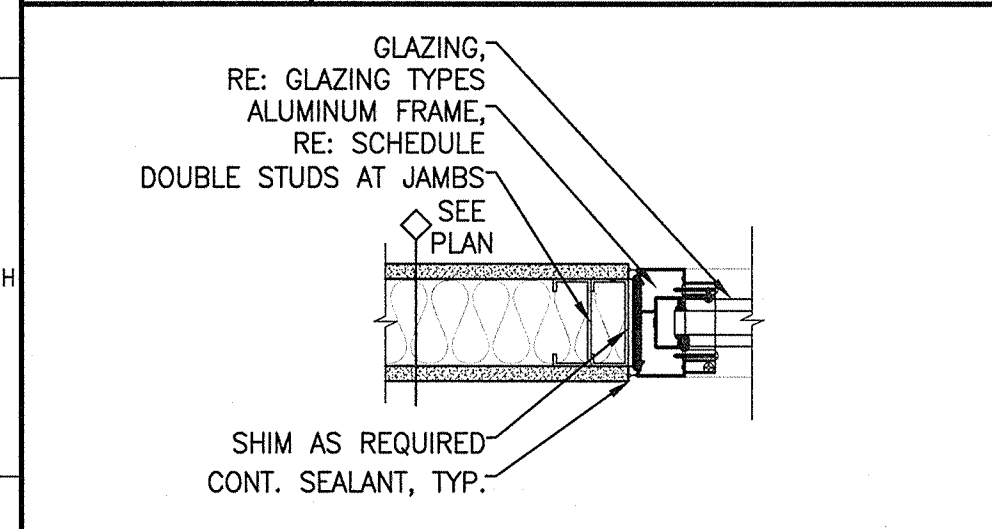
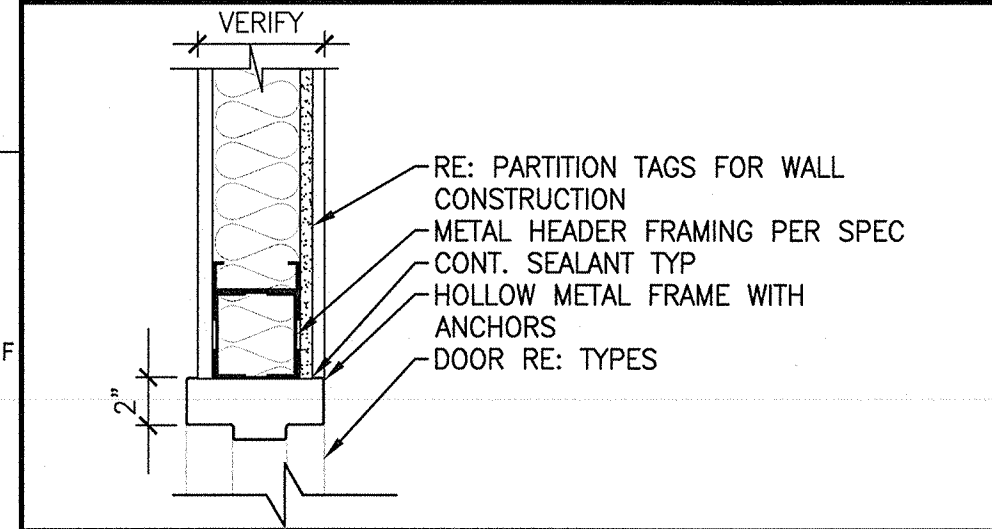


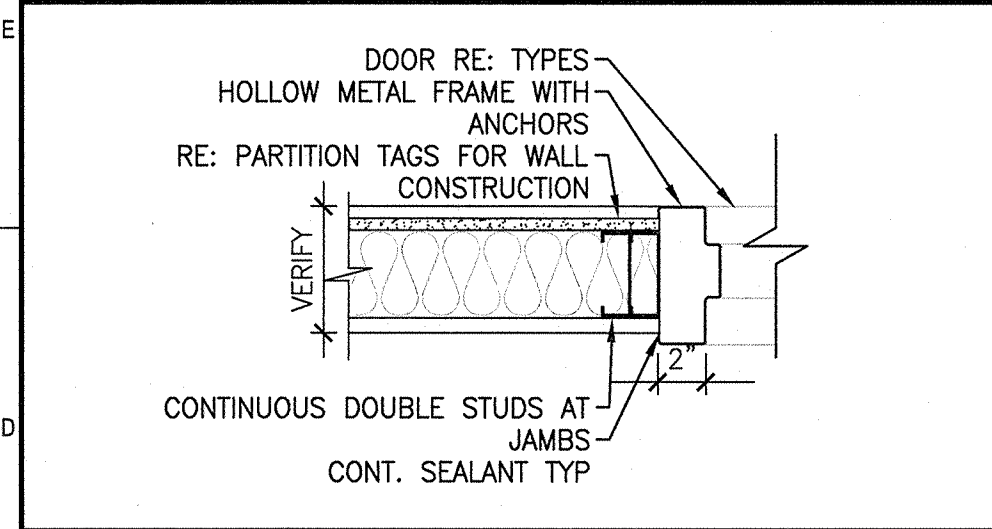
J14 SIDELIGHT HEAD
1 1/2" = 1'-0" AE601



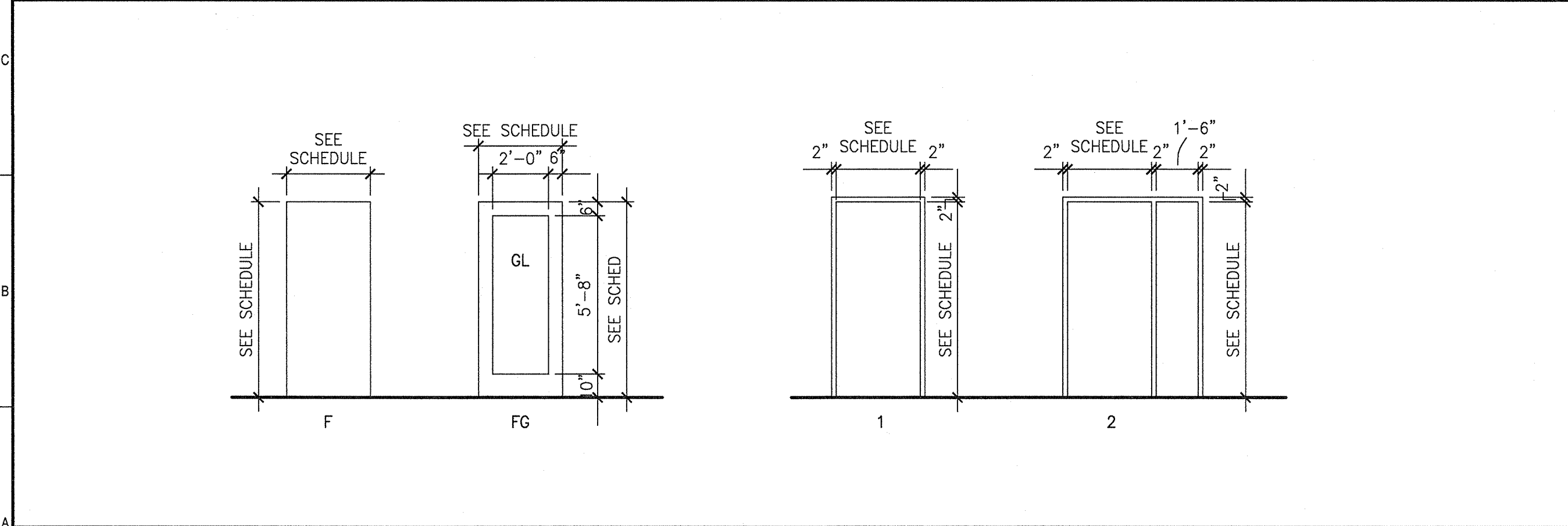
G14 SIDELIGHT JAMB
1 1/2" = 1'-0" AE601



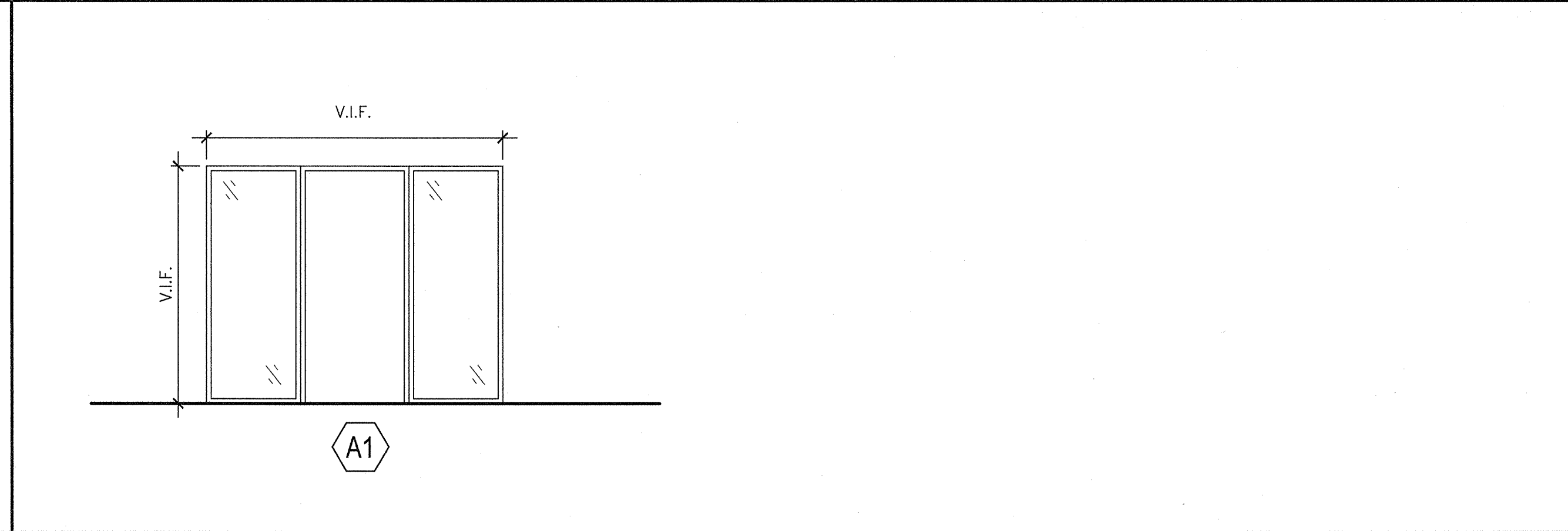
E14 DOOR HEADER DETAIL
1 1/2" = 1'-0" AE601



C14 DOOR JAMB DETAIL
1 1/2" = 1'-0" AE601



A14 DOOR AND HOLLOW METAL FRAME TYPES
1/4" = 1'-0" AE601



A7 WINDOW TYPES
1/4" = 1'-0" AE601

FINISH SCHEDULE NOTES:

- REFER TO FLOOR PLANS, WALL TAGS AND WALL LEGEND FOR WALL TYPE DEFINITIONS.
- REFER TO PARTITION LEGEND FOR TYPE OF GWB COMPOSITION REQUIRED. ABUSE RESISTANT, MOISTURE RESISTANT OR OTHER TYPICAL.
- ALL WALLS TO BE PAINTED W/ PTD-1 UNLESS NOTED OTHERWISE.

FINISH ABBREVIATIONS:

- ACT1 ACOUSTICAL CEILING TILE & GRID SYSTEM
- BOS BOTTOM OF STRUCTURE
- CMU CONCRETE MASONRY UNIT, EPOXY PAINTED
- CPT CARPET
- CT CERAMIC TILE
- EPTD EPOXY PAINTED
- EXP EXPOSED STRUCTURE
- GWB1 GYPSUM WALL BOARD, EPOXY PAINTED
- GWB2 GYPSUM WALL BOARD, PAINTED
- PTD PAINTED
- RB RESILIENT BASE
- VCT VINYL COMPOSITION TILE

FINISH MATERIALS:

- ACT-1: ARMSTRONG, 2x2 DUNE 1774 HUMIGUARD, SQUARE LAY IN CEILING, 15/16" METAL GRID SYSTEM.
- PTD-1: (FIELD) SHERWIN WILLIAMS, COLOR: TBD.
- PTD-2: (TRIM) SHERWIN WILLIAMS, COLOR: TBD.
- PTD-3: (CEILING) SHERWIN WILLIAMS, EXTRA WHITE SW7006.
- RB-1: JOHNSONITE 4-INCH COVE WALL BASE, COLOR: TBD.
- RUB-1: JOHNSONITE MICROTONE SPECKLED RUBBER TILE, SIZE: 24x24, SURFACE TEXTURE: HAMMERED, COLOR: TBD.
- SV-1: MANNINGTON COMMERCIAL, REALITIES MAPLE GROVE, COLOR: TBD.

DOOR HARDWARE SETS

- HWS-1: HINGES, LEVER STYLE LOCKSET, PUSH BUTTON ACCESS, WALL STOP, SILENCERS
- HWS-2: HINGES, LEVER STYLE LOCKSET, PUSH BUTTON ACCESS, CLOSER, WALL STOP, SILENCERS
- HWS-3: HINGES, LEVER STYLE LOCKSET, CARD READER, CLOSER, WALL STOP, SILENCERS.

DOOR ABBREVIATIONS

- AL/ALUM ALUMINUM
- CL CHAIN LINK
- HM HOLLOW METAL
- HWS HARDWARE SCHEDULE
- INS INSULATED
- S/S STAINLESS STEEL
- STL STEEL SHEET OR PLATE DOOR
- TEMP TEMPERED GLASS
- WD COMMERCIAL GRADE WOOD DOOR
- WIRE WIRE GLASS
- SM SECURITY MESH
- Y INDICATES YELLOW FILM ON GLASS

ROOM FINISH SCHEDULE

ROOM NUMBER	ROOM NAME	FLOOR	BASE	WALLS				CEILING MATERIAL	ROOM NUMBER	REMARKS
				NORTH	SOUTH	EAST	WEST			
101	PHARMACY	RUB-1	RB-1	PTD-1	PTD-1	PTD-1	PTD-1	ACT-1	101	-
102	STORAGE	SV-1	RB-1	PTD-1	PTD-1	PTD-1	PTD-1	ACT-1	102	-
103	CORRIDOR	RUB-1	RB-1	PTD-1	PTD-1	PTD-1	PTD-1	ACT-1	103	-
104	CONSULTATION	SV-1	RB-1	PTD-1	PTD-1	PTD-1	PTD-1	ACT-1	104	-
105	BATHROOM	RUB-1	RB-1	PTD-1	PTD-1	PTD-1	PTD-1	ACT-1	105	-

DOOR SCHEDULE

DOOR NUMBER	DOOR			GLAZING	FRAME				HWS	FIRE RATING (MIN.)	DOOR NUMBER	REMARKS
	SIZE	MATERIAL	ELEVATION		MATERIAL	ELEVATION	HEAD	JAMB				
101	3'-6"x7'-0"	ALUM	FG	TEMP	ALUM	-	-	-	ALUM*	-	101	*HARDWARE BY FRAME MANUFACTURER, CARD READER ON EXTERIOR
102	3'-0"x7'-0"	WD	F	-	HM	1	E14	C14	HWS-2	-	102	-
103	3'-6"x7'-0"	WD	FG	TEMP	HM	2	E14	C14	HWS-3	-	103	-
104	3'-0"x7'-0"	WD	FG	TEMP	HM	1	E14	C14	HWS-1	-	104	-
105	3'-0"x7'-0"	WD	F	-	HM	1	E14	C14	HWS-1	-	105	-

GENERAL NOTES:

- SEE G1001 FOR GENERAL PROJECT NOTES.
- ALL SWINGING DOORS TO BE 1-3/4" THICK (U.N.O.). BLAST RESISTANT DOOR THICKNESS PER MANUFACTURER.
- ALL DOORS SHALL BE 3/4" UNDERCUT (TYPICAL) EXCEPT WHEN THERE IS A BOTTOM FRAME OR SILL THRESHOLD OR SPECIFICALLY NOTED OTHERWISE. ALL DOORS WITH BOTTOM FRAMES OR SILL THRESHOLDS SHALL HAVE MANUFACTURERS RECOMMENDED STANDARD UNDERCUT.
- GLAZING NOTED ON DOOR SCHEDULE IS FOR THE DOOR AND SIDELIGHTS IN THE FRAME (TYPICAL). ALL GLAZING IN DOORS AND SIDELIGHTS TO BE SAFETY RATED CLASS I IN ACCORDANCE W/ CPSC16 CFR 1201.
- PAINT ALL NEW DOOR FRAMES PTD-2 (SEE FINISH MATERIAL).
- FINISH ALL WOOD DOORS TO MATCH EXISTING.
- FIELD VERIFY ALL DOOR SIZES IN EXISTING OPENINGS PRIOR TO FABRICATION.
- REINSTALL HOLD OPENS AND ALARM DEVICES ON ANY REPLACED EXISTING DOORS AS REQUIRED. REPLACE ANY OF THESE COMPONENTS AS REQUIRED IF CONDITION WARRANTS.
- DOOR HARDWARE FINISH TO MATCH EXISTING. COORDINATE ANY DISCREPANCIES OR INCONSISTENCIES WITH THE OWNER.

0	PERMIT SET	7-1-16
REV	DESCRIPTION	DATE

PERMIT SET
7-1-16

CURRENT ISSUE STATUS:

PROJECT NORTH: July 16

SMRT Architects and Engineers
144 Fore Street
Portland, Maine 04104
1.877.700.7678
www.smrtinc.com

ARCHITECTURE | ENGINEERING | PLANNING | INTERIORS | ENERGY

**MILLER DRUG FITUP
MERCY FORE RIVER MOB**

195 Fore River Parkway, Portland, ME 04102

SCHEDULES & DETAILS

SHEET TITLE:

SCALE: AS NOTED

PROJECT MANAGER:	KD	PROJECT NO.:	16087
A/E OF RECORD:	KDD		
JOB CAPTAIN:	SHK		
DRAWN BY:	SHK		
SMRT FILE:	AE601-16087	SHEET No.:	AE601

© COPYRIGHT 2015 SMRT INC.