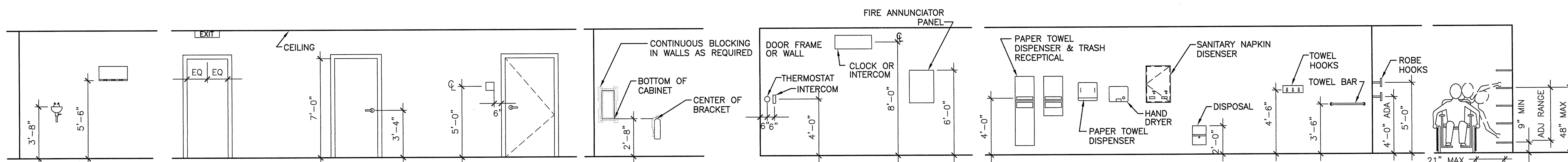


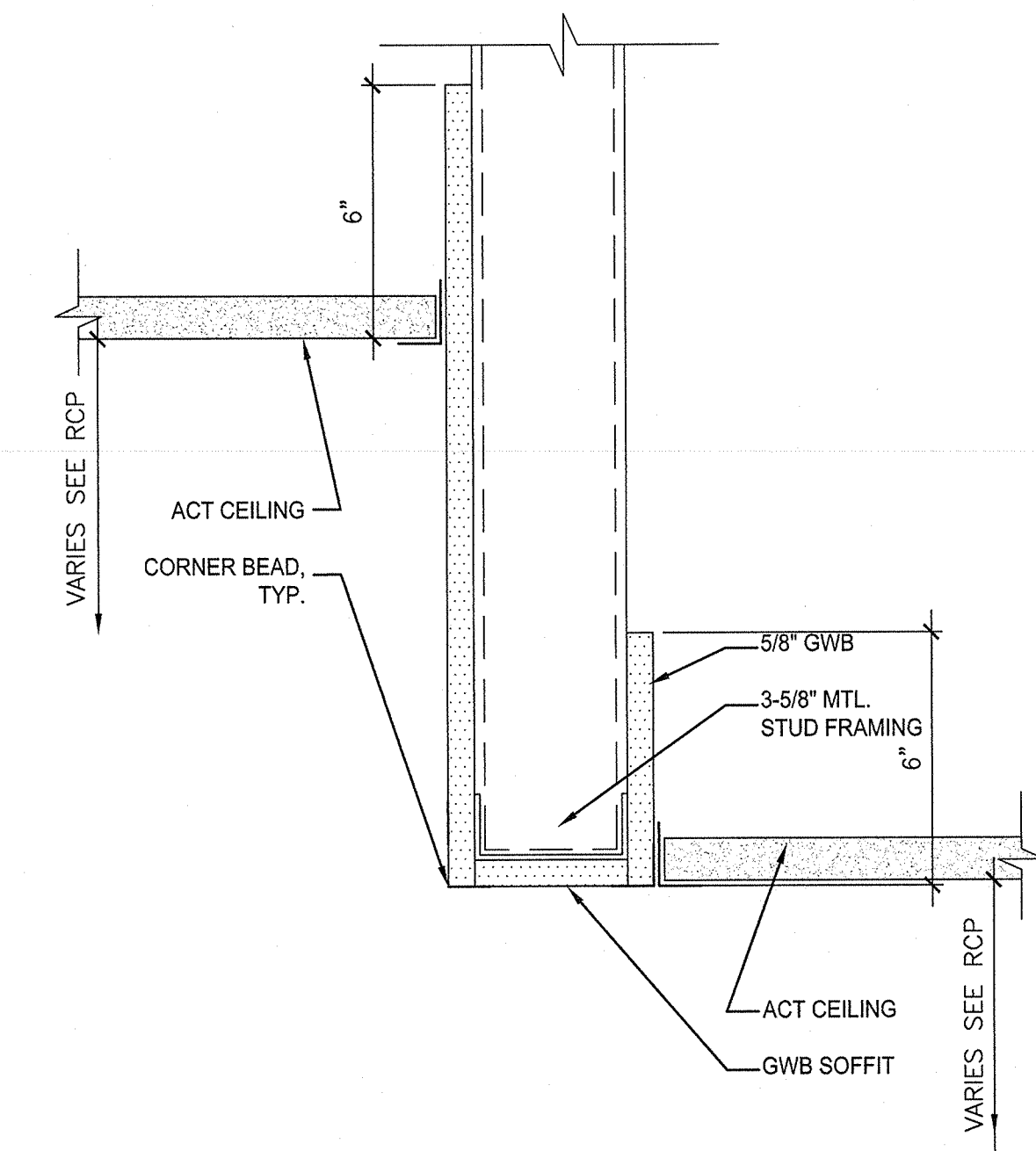
GENERAL NOTES:

1. SEE G1001 FOR GENERAL PROJECT NOTES.



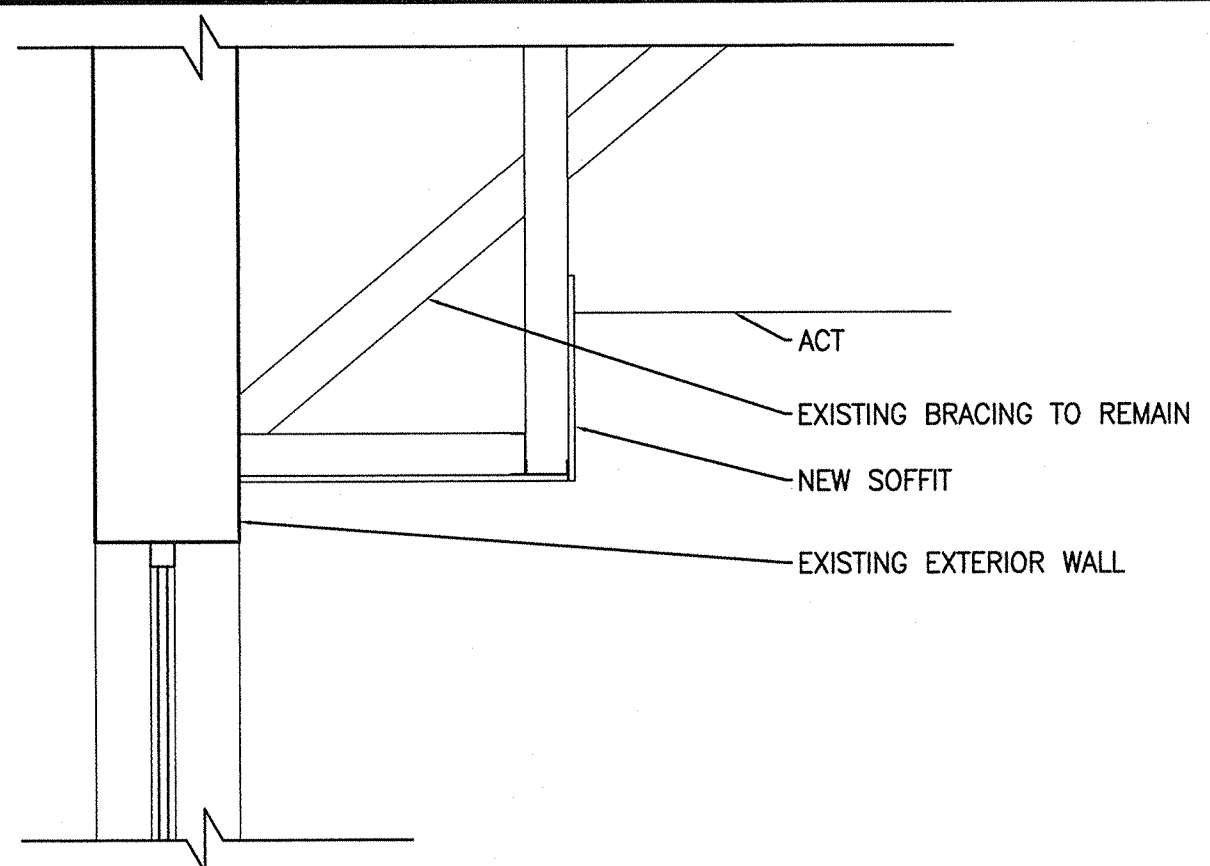
H14 TYPICAL MOUNTING HEIGHTS

N/A AE121



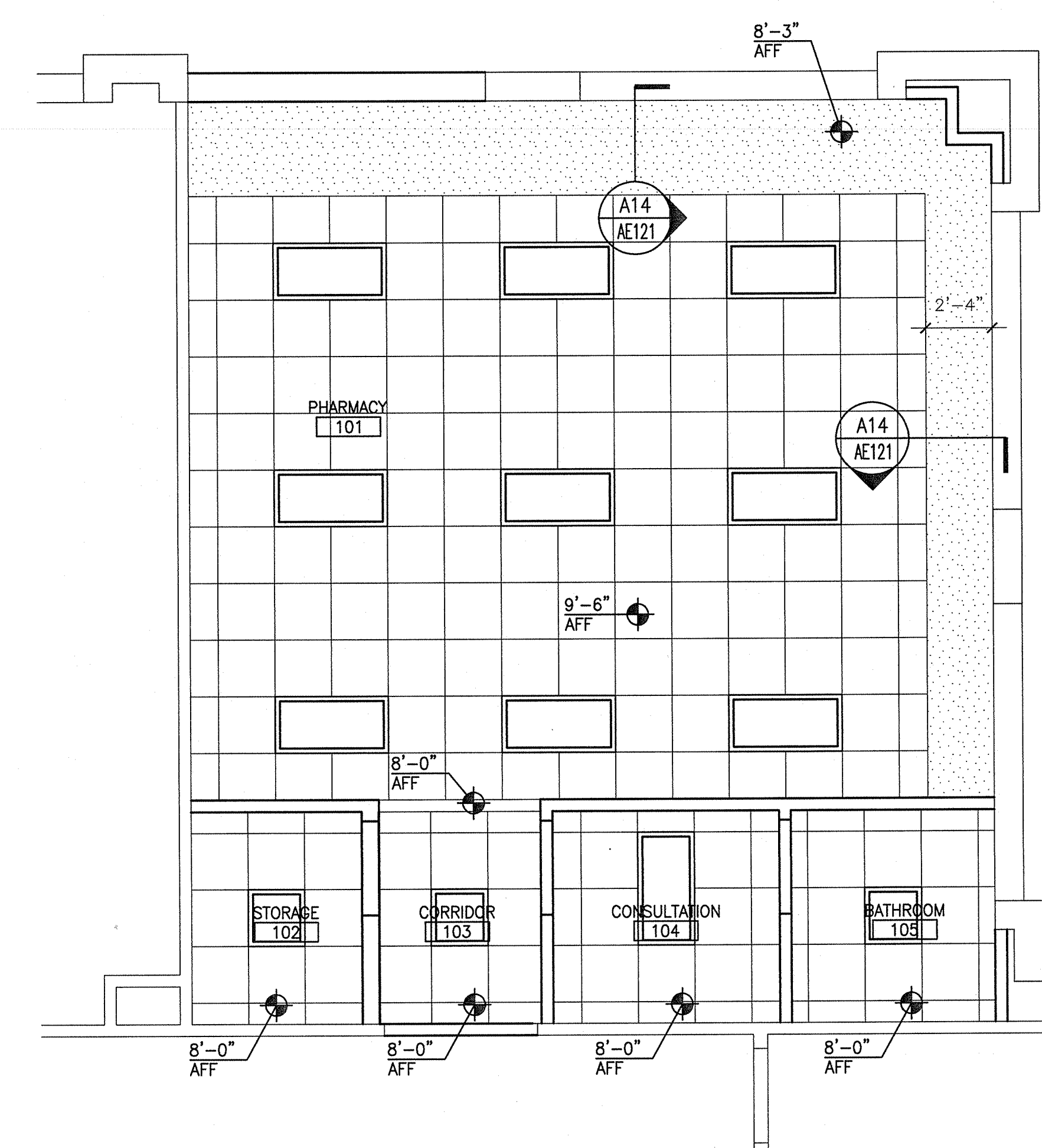
D14 SOFFIT DETAIL SECTION

3" = 1'-0" AE121



A14 SOFFIT DETAIL SECTION

3/4" = 1'-0" AE121



REFLECTED CEILING LEGEND:

- 2x2 SUSPENDED CEILING PANEL AND GRID ASSEMBLY
- GWB CEILING
- 2x4 LAY-IN LIGHT FIXTURE
- 2x2 LAY-IN LIGHT FIXTURE
- 1x4 PENDANT LIGHT FIXTURE
- DOWN LIGHT
- CEILING MOUNTED EXIT LIGHT
- RETURN AIR GRILLE
- SUPPLY AIR GRILLE
- EXHAUST AIR GRILLE
- SPRINKLER HEAD
- CEILING MOUNTED SPEAKER
- CEILING MOUNTED SMOKE DETECTOR
- CEILING MOUNTED OCCUPANCY SENSOR

REV	DESCRIPTION	DATE
0	PERMIT SET	7-1-16

PERMIT SET 7-1-16

CURRENT ISSUE STATUS:

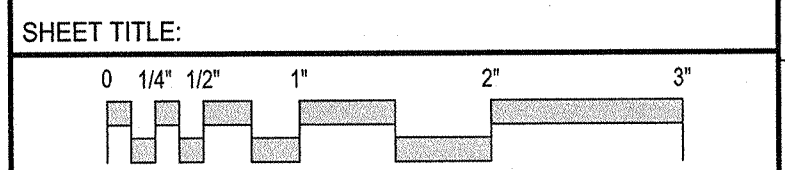
PROJECT NORTH:

1 July 16

SMRT Architects and Engineers
144 Fore Street
Portland, Maine 04104
1.877.700.7678
www.smrtinc.com
ARCHITECTURE | ENGINEERING | PLANNING | INTERIORS | ENERGY

**MILLER DRUG FITUP
MERCY FORE RIVER MOB**

195 Fore River Parkway, Portland, ME 04102
REFLECTED CEILING PLAN



PROJECT MANAGER:	KD	PROJECT NO:	16087
A/E OF RECORD:	KD		
JOB CAPTAIN:	SHK		
DRAWN BY:	SHK		
SMRT FILE:	AE121-16087	SHEET No.	AE121