

CODE REVIEW SUMMARY

PROJECT DESCRIPTION:
PROJECT CONSISTS OF AN INTERIOR FIT-UP FOR A NEW PHARMACY RETAIL SPACE WITHIN AN EXISTING BUILDING. WORK CONSISTS OF A NEW FLOOR SLAB, INTERIOR PARTITIONS, STOREFRONT SYSTEM, EXTERIOR CANOPY, DOORS, AND CEILING. SPACES INCLUDE THE RETAIL SPACE, A STORAGE SPACE, A CONSULTATION SPACE, AND AN ACCESSIBLE BATHROOM.

LIFE SAFETY CODE:
NFPA, INCLUDING 101 LIFE SAFETY CODE, 2009 EDITION

BUILDING CODE:
INTERNATIONAL BUILDING CODE (IBC) 2009

HANDICAPPED ACCESSIBILITY STANDARD:
AMERICANS WITH DISABILITIES ACT ACCESSIBILITY GUIDELINES

USE GROUP CLASSIFICATION(S):
NFPA 101: EXISTING BUSINESS (CHAPTER 39)

OCCUPANCY CLASSIFICATION(S):
IBC: BUSINESS

CONSTRUCTION TYPE:
NFPA 101: TYPE II (000) UNPROTECTED NON-COMBUSTIBLE
IBC: TYPE 2B

BUILDING IS PROTECTED THROUGHOUT BY AUTOMATIC FIRE SPRINKLER SYSTEM IN CONFORMANCE WITH NFPA 13

TENANT AREA: 925 SF

MEANS OF EGRESS
BUSINESS OCCUPANT LOAD: 100 SF PER OCCUPANT
925 SF / 100 SF PER OCCUPANT = 10 OCCUPANTS

MINIMUM NUMBER OF EXITS:
10 OCCUPANTS < 50 OCCUPANTS = 1 EXIT

EXIT ACCESS DIMENSIONS:
CORRIDORS: 44 INCHES (60" PER FGI GUIDELINES FOR HEALTHCARE)
DOORS, MINIMUM CLEAR WIDTH: 32 INCHES
DEAD END CORRIDORS: 50 FT
COMMON PATH OF TRAVEL MAXIMUM: 100 FT
TRAVEL DISTANCE MAXIMUM: 300 FT

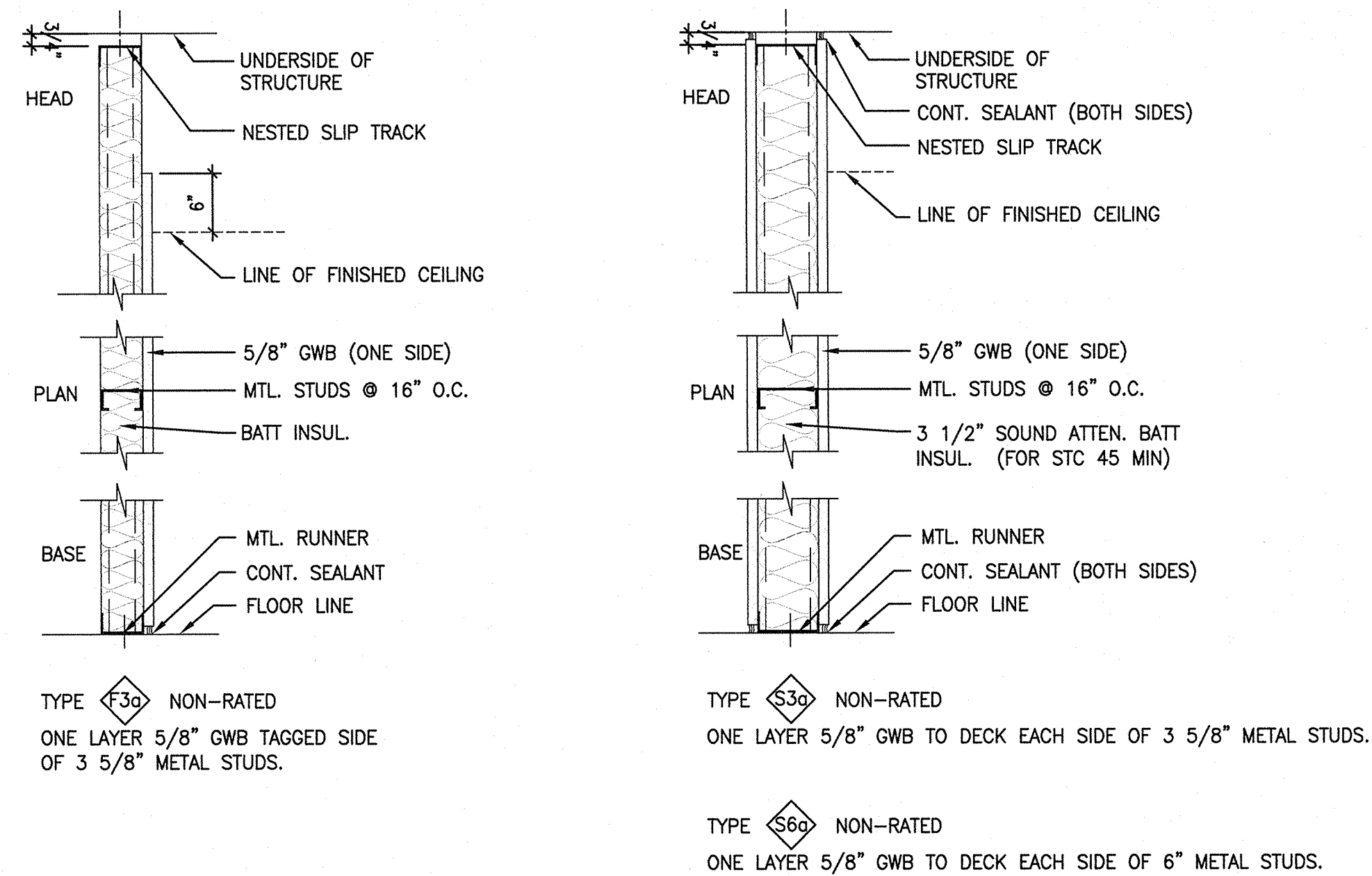
PROTECTION FROM HAZARDS
WATER BASED AUTOMATIC FIRE PROTECTION SYSTEM CONFORMING WITH NFPA 13, TYPICAL THROUGHOUT THE BUILDING UNLESS NOTED OTHERWISE SPECIFIC OCCUPANCY AREAS WILL BE FIRE OR SMOKE SEPARATED AS IDENTIFIED ABOVE.

EXTINGUISHMENT
PORTABLE FIRE EXTINGUISHERS IN ACCORDANCE WITH NFPA 101, SECTION 9.7.4.1

DETECTION, ALARM AND COMMUNICATION SYSTEMS
FIRE ALARM SYSTEM REQUIRED IN ACCORDANCE WITH NFPA 101, SECTION 906.

ARRANGEMENT OF EXITS:
DEAD END CORRIDOR: 50' MAX.
COMMON PATH OF TRAVEL: 100' MAX IN BUSINESS OCCUPANCY.
TRAVEL DISTANCE: 300' MAX IN BUSINESS OCCUPANCY.

NOTES: EACH TRADE TO PROVIDE SMOKE OR FIRE SEALANT AT PENETRATIONS AS REQUIRED FOR WALL TYPE. ALL FIRE SEALANT, FIRE STOPPING ASSEMBLIES SHALL BE U.L. RATED

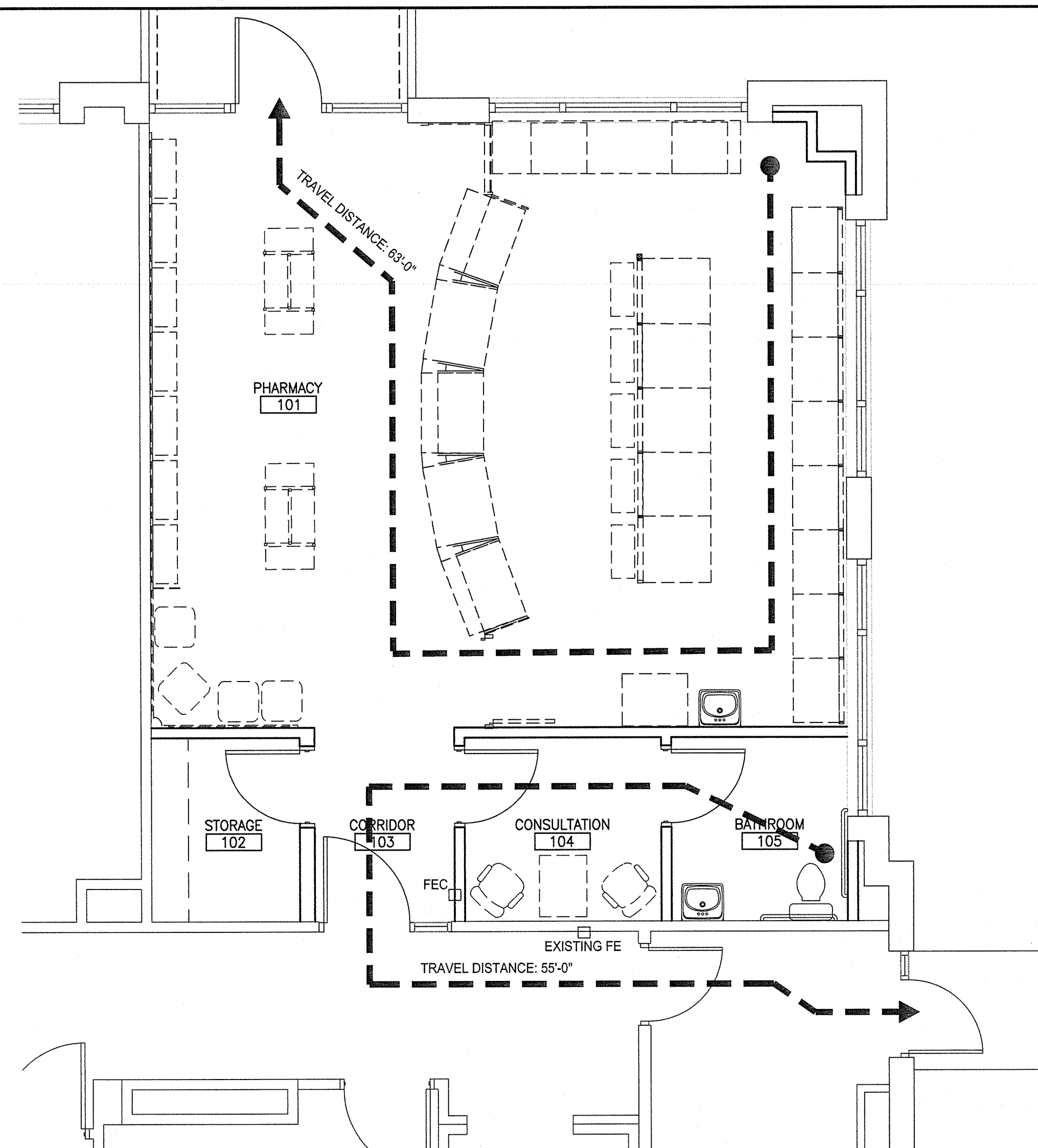


GENERAL NOTES:

1. SEE G1001 FOR GENERAL PROJECT NOTES.

G7 WALL TYPES

1 1/2" = 1'-0" A-001



LIFE SAFETY SYMBOL LEGEND:

- EXIT DISCHARGE
- 1 HR RATED FIRE BARRIER
- 2 HR RATED FIRE BARRIER
- TRAVEL DISTANCE
- FIRE EXTINGUISHER CABINET
- FIRE EXTINGUISHER
- EXIT SIGN
- FIRE ALARM VISIBLE ONLY NOTIFICATION INDICATOR
- FIRE ALARM AUDIBLE/VISIBLE NOTIFICATION INDICATOR

1	PERMIT SET	8-24-16
0	PERMIT SET	7-1-16
REV	DESCRIPTION	DATE

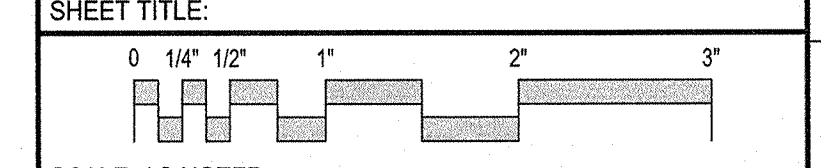
PERMIT SET
8-24-16
CURRENT ISSUE STATUS:

PROJECT NORTH:

SMRT Architects and Engineers
144 Fore Street
Portland, Maine 04104
1.877.700.7678
www.smrtinc.com

MILLER DRUG FITUP
MERCY FORE RIVER MOB
195 Fore River Parkway, Portland, ME 04102

LIFE SAFETY & WALL TYPES



SCALE: AS NOTED

PROJECT MANAGER:	KD	PROJECT NO:	16087
A/E OF RECORD:	KD		
JOB CAPTAIN:	SHK		
DRAWN BY:	SHK		
SMRT FILE:	A-001-16087	SHEET No.	A-001

A14 CODE REVIEW SUMMARY

N/A A-001

A7 LIFE SAFETY PLAN

1/4" = 1'-0" A-001