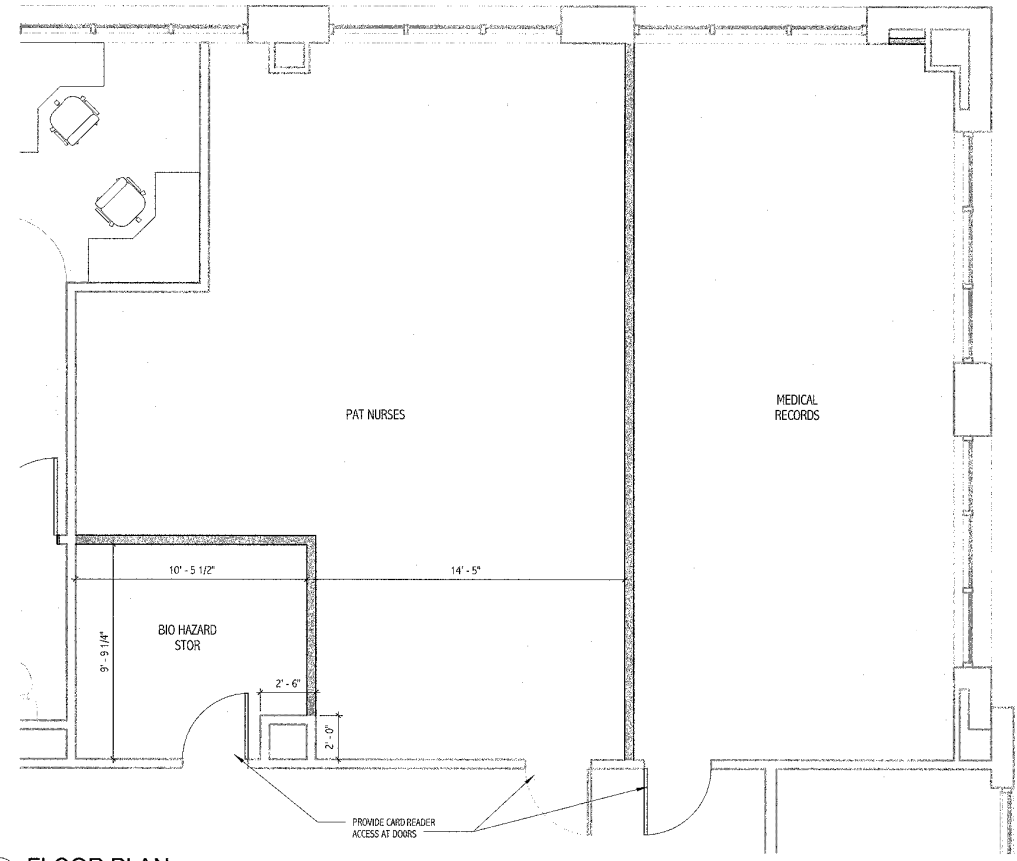


PLAN NOTES:

1. CONTRACTOR IS RESPONSIBLE FOR REVIEWING CODE COMPLIANCE PLANS AND NOTIFYING THE ARCHITECT OF CONFLICTS BETWEEN WHAT IS IN THE FIELD AND ON THE CODE DOCUMENTS.
2. DIMENSIONS ARE FACE OF CONCRETE, FACE OF MASONRY AND FACE OF GYP BOARD, UNLESS NOTED OTHERWISE.
3. DOOR JAMBS (HINGE SIDE) SHALL BE 6" FROM CORNER IN STUD PARTITIONS AND 8" FROM CORNER IN MASONRY PARTITIONS UNLESS NOTED OTHERWISE.
4. REFER TO DETAILS FOR ADDITIONAL DIMENSIONING INFORMATION.
5. FURNITURE AND OWNER PROVIDED EQUIPMENT ARE INDICATED BY DASHED LINE TYPE.
6. CONTRACTOR IS RESPONSIBLE FOR THE COORDINATION OF OWNER PROVIDED EQUIPMENT INCLUDING BUT NOT LIMITED TO DIMENSIONAL INFORMATION, AND MECHANICAL, ELECTRICAL AND PLUMBING REQUIREMENTS.
7. ALL NEW ROOMS, ROOMS WITH USE CHANGES, AND ROOMS NOT CURRENTLY SIGNED REQUIRE ADA APPROVED SIGNAGE, CONTRACTOR TO PROVIDE.
8. PATCH AND PAINT ALL WALLS.
9. FINAL CLEANING TO BE COMPLETED BY CONTRACTOR
10. KEYS TO BE PROVIDED BY CONTRACTOR



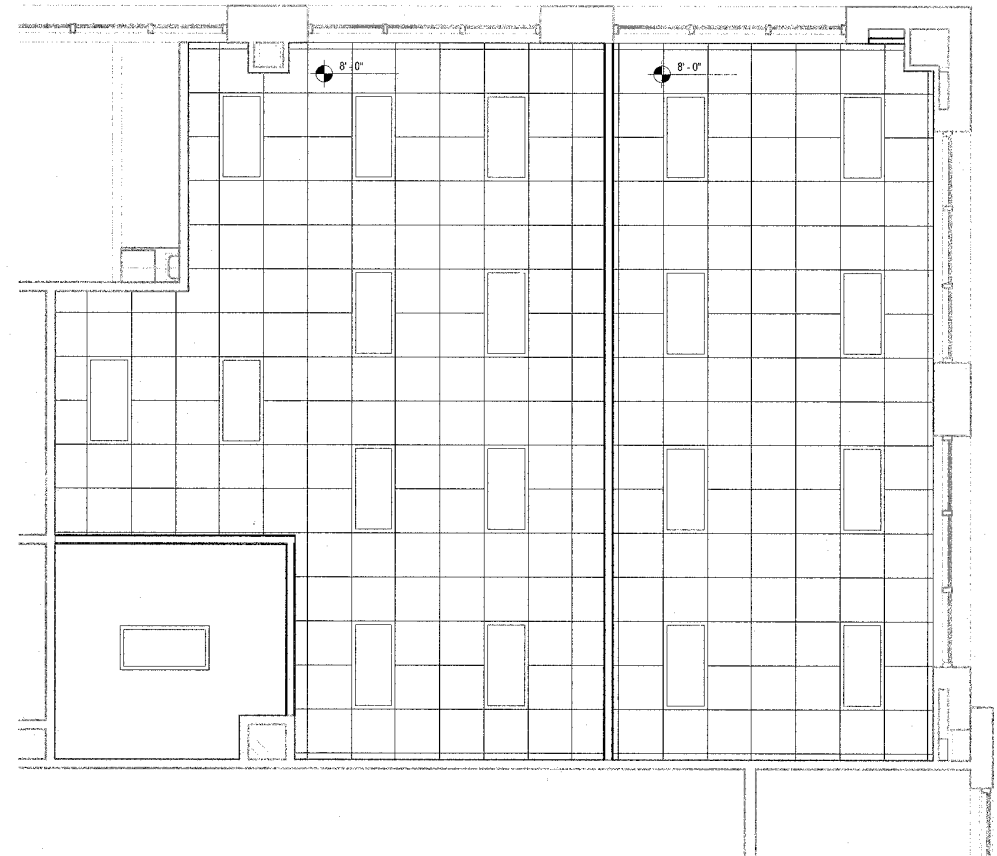
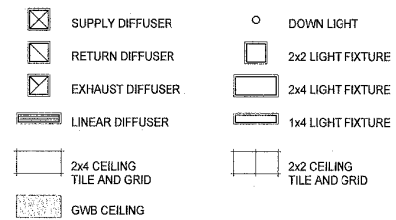
1 FLOOR PLAN
1/4" = 1'-0"

SUITE 90 SCHEDULE OF WORK					
Name	FLOOR NOTES	CEILING NOTES	ELECTICAL NOTES	PREVIOUS USE	GENERAL NOTES
BIO HAZARD STOR	VCT	GYP BD	NEW LIGHTING AND ELECTRICAL AS NEEDED	N/A	NEW SIGNAGE NEEDED AT CORRIDOR, PROVIDE CARD READER ACCESS AT DOOR & REQUIRED ELECTRICAL
PAT NURSES	CPT	ACT	PROVIDE POWER & DATA FOR NEW WORK STATIONS	N/A	NEW SIGNAGE NEEDED AT CORRIDOR, PROVIDE CARD READER ACCESS AT DOOR & REQUIRED ELECTRICAL
MEDICAL RECORDS	CPT	ACT	PROVIDE POWER & DATA FOR NEW WORK STATIONS	N/A	NEW SIGNAGE NEEDED AT CORRIDOR, PROVIDE CARD READER ACCESS AT DOOR & REQUIRED ELECTRICAL

CEILING NOTES:

1. LIGHT LAYOUT WILL BE FINALIZED BASED ON FURNITURE SELECTION.
2. LIGHT FIXTURES ARE TO MATCH EXISTING FIXTURES USED IN OFFICES IN THE FACILITY.
3. EXCEPT WHERE INDICATED, CENTER CEILING GRIDS IN ROOMS. USE HALF TILES OF GREATER @ PERIMETERS WHEN POSSIBLE.
4. ALIGN CEILING ITEMS AS SHOWN, WITH COMMON CENTERLINES TYPICALLY. CENTER ITEMS IN CEILING, OR IN AREAS UNLESS INDICATED OTHERWISE.
5. WHERE REGULAR OR BEVELED TILE IS USED, PAINT ALL CUT EDGES TO MATCH.
6. CAULK JOINT BETWEEN CEILING GRID (WALL ANGLE) AND WALL WHERE GAPS ARE LARGER THAN 1/8" OR GREATER.
7. PROVIDE ACCESS PANELS AS REQUIRED IN GWB CEILINGS FOR ACCESS AS REQUIRED BY ALL TRADES.
8. FIRE SPRINKLERS SHALL BE CENTERED IN CEILING TILE OR HALF TILE AS SHOWN. FIRE SPRINKLERS SHALL BE LOCATED IN ALIGNMENT WITH OTHER CEILING ITEMS AND SHALL BE PLACED IN COORDINATION WITH LIGHT FIXTURE POSITIONS INDICATED, TYPICAL.
9. FIRE SPRINKLERS ARE SHOWN FOR COORDINATION PURPOSES ONLY. ADDITIONAL SPRINKLER HEADS MAY BE REQUIRED FOR CODE COMPLIANCE, AS DETERMINED BY THE FIRE PROTECTION DESIGNER. SPRINKLERS ARE NOT SHOWN IN ALL AREAS WHERE REQUIRED. FIRE PROTECTION CONTRACTOR SHALL BE RESPONSIBLE FOR PROVIDING A COMPLETE AND FULLY CODE COMPLIANT SYSTEM INCLUDING HEADS NOT INDICATED IN THIS DRAWING. SIDEWALL MOUNT SPRINKLER HEADS UNDER BALCONIES ARE NOT SHOWN IN THE CEILING PLANS. SEE MECHANICAL, ELECTRICAL AND PLUMBING DRAWINGS FOR ADDITIONAL INFORMATION.
10. WHERE ARCHITECTURAL DRAWINGS DEPICT MECHANICAL OR ELECTRICAL ITEMS OR EQUIPMENT (LIGHTS, DIFFUSERS, ETC.) INSTALLATION OF SUCH ITEMS SHALL BE COORDINATED WITH EACH RESPECTIVE TRADE SUB-CONTRACTOR.
12. WHERE DRAWINGS DO NOT ACCESS INSTALLATION METHODOLOGY, THE CONTRACTOR SHALL BE BOUND TO PERFORM IN STRICT COMPLIANCE WITH THE MANUFACTURER'S SPECIFICATIONS, AND STANDARD INDUSTRY STANDARDS.

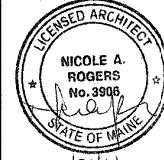
CEILING LEGEND:



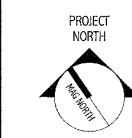
2 REFLECTED CEILING PLAN
1/4" = 1'-0"

144 Fore Street, Box 618
Portland, Maine 04104
Tel: (207) 775-3846
Fax: (207) 772-1070
www.smrtinc.com

ARCHITECTURE
ENGINEERING
PLANNING
INTERIOR DESIGN
COMMISSIONING



07/28/14



SUITE 390 FIT-UP
PORTLAND, ME
CURRENT ISSUE STATUS:

PERMIT SET
07/28/14

REV	DATE	DESCRIPTION

GRAPHIC SCALE:
0' 1'

SCALE: As Indicated
PROJECT MANAGER: COP
DRAWN BY: IAR
AGE OF RECORD: IAR
PROJECT NO: 13162
DATE: 03/18/14

SHEET TITLE:
PLANS

SHEET No.
AE-101