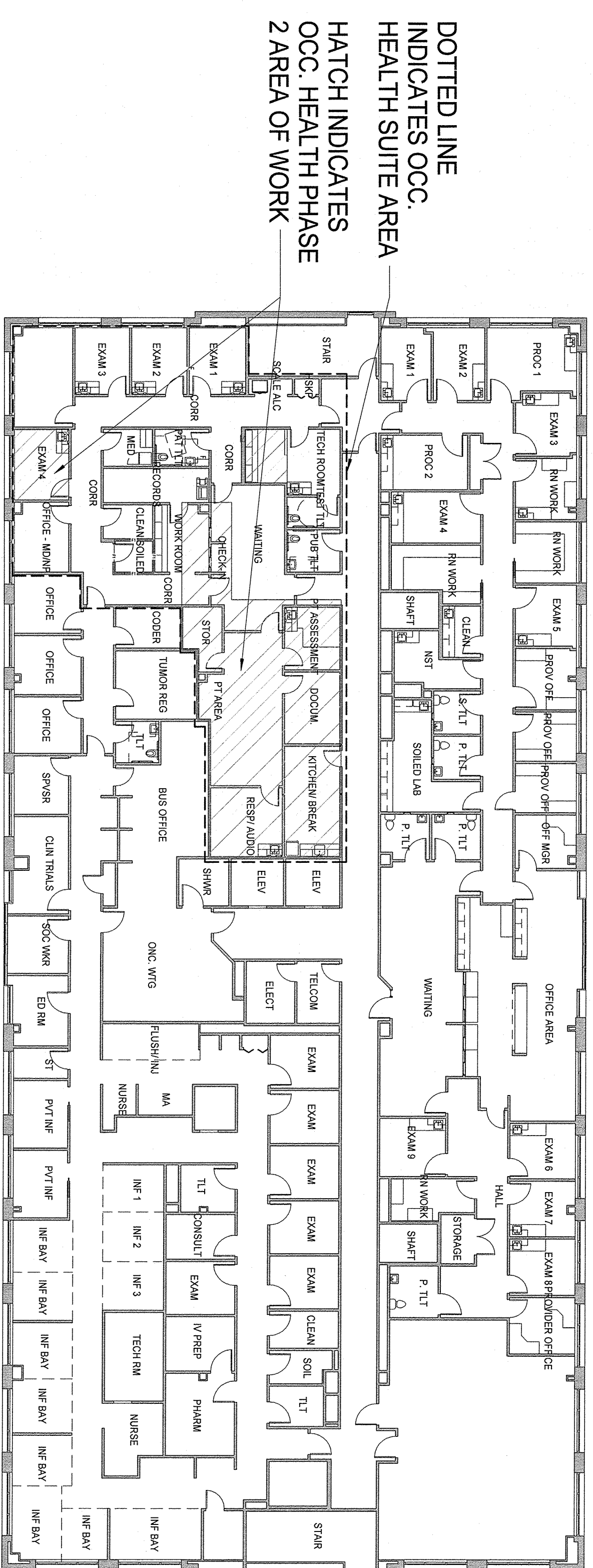


MERCY HOSPITAL

OCCUPATIONAL HEALTH SUITE - PHASE 2

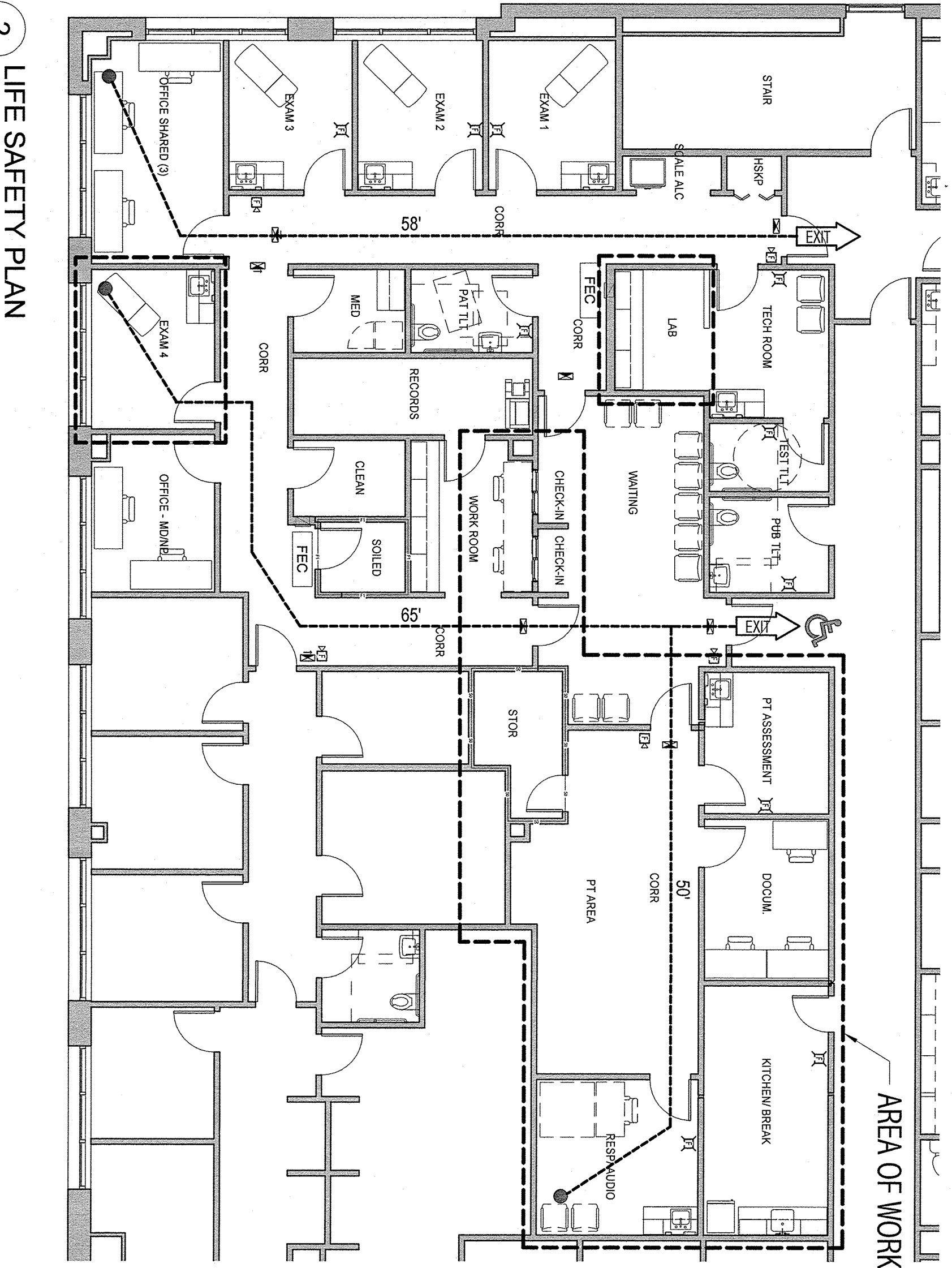
FORE RIVER M.O.B.

PERMIT SET



DOTTED LINE INDICATES OCC. HEALTH SUITE AREA
HATCH INDICATES OCC. HEALTH PHASE 2 AREA OF WORK

1 LEVEL 3 FLOOR PLAN
1/8" = 1'-0"



LIFE SAFETY LEGEND

- H2 — 2 HOUR RATED HORIZONTAL EXIT & SMOKE BARRIER
- O2 — 2 HOUR RATED OCCUPANCY SEPARATION & SMOKE BARRIER
- F2 — 2 HOUR RATED FIRE BARRIER
- F1 — 1 HOUR RATED FIRE BARRIER
- S2 — 2 HOUR RATED SMOKE BARRIER
- S1 — 1 HOUR RATED SMOKE BARRIER
- SO — SMOKE PARTITION
- — EXIT DISCHARGE
- ⊙ — SMOKE CONTAINMENT BARRIER
- 172 — TRAVEL DISTANCE
- FEQ — FIRE EXTINGUISHER CABINET
- FE — FIRE EXTINGUISHER WALL HUNG
- EXIT — EGRESS DOOR
- E — FIRE ALARM VISIBLE ONLY
- F — FIRE ALARM AUDIBLE/VISIBLE NOTIFICATION APPLIANCE (GENERAL EVACUATION)
- Ⓜ — EXIT SIGN
- ♿ — ACCESSIBLE ENTRY/EGRESS

2 LIFE SAFETY PLAN
1/8" = 1'-0"

CODE AND STANDARD APPLICABLE TO SCOPE OF PROFESSIONAL SERVICES REQUESTED

LIFE SAFETY CODE:
NFPA, INCLUDING 101 LIFE SAFETY CODE 2012 EDITION
AUTHORITY HAVING JURISDICTION:
MAINE DEPARTMENT OF PUBLIC SAFETY
FIRE MARSHAL'S OFFICE
45 COMMERCE DRIVE, SUITE 1
AUGUSTA, ME 04330
207-626-5884

BUILDING CODE:
INTERNATIONAL BUILDING CODE (IBC) 2009
AUTHORITY HAVING JURISDICTION:
CITY OF PORTLAND
PLANNING AND DEVELOPMENT DEPARTMENT
588 CONGRESS STREET
PORTLAND, ME 04101

HANDICAPPED ACCESSIBILITY STANDARD:
AMERICANS WITH DISABILITIES ACT ACCESSIBILITY GUIDELINES
AUTHORITY HAVING JURISDICTION:
FIRE MARSHAL'S OFFICE
45 COMMERCE DRIVE, SUITE 1
AUGUSTA, ME 04330
207-626-5884

BASIC LIFE SAFETY AND BUILDING CODE CRITERIA

DESCRIPTION OF BUILDING FUNCTION
EXISTING, FOUR STORY COMMERCIAL OFFICE BUILDING (DOCTORS OFFICE)

OCCUPANCY CLASSIFICATION
IBC: EXISTING BUSINESS (CHAPTER 39)

USE GROUP CLASSIFICATION
IBC: BUSINESS

SPECIFIC OCCUPANCY AREAS (BOCA TABLE 302.1.1)

WASTE & SOILED COLLECTION LINEN ROOM
STORAGE ROOMS >50 SF AND <100 SF
STORAGE ROOMS GREATER THAN 100 SF

ACCESSORY USE AREA (BOCA, 302.1.2)
NONE IDENTIFIED

SPECIAL USE AND OCCUPANCY
NONE IDENTIFIED

TYPE OF CONSTRUCTION
NFPA: TYPE II (III) PROTECTED NON-COMBUSTIBLE
IBC: TYPE 2B

BUILDING IS PROTECTED THROUGHOUT BY AUTOMATIC FIRE SPRINKLER SYSTEM IN CONFORMANCE WITH NFPA 13

TENANT AREA
AREA 2, 190 SF EXISTING
924 SF ADDITIONAL
3132 SF TOTAL

MEANS OF EGRESS
OCCUPANT LOAD
BUSINESS = 160 SF / OCCUPANT
3132 SF / 100 SF = 31 OCCUPANTS

MINIMUM NUMBER OF EXITS
31 < 500 OCCUPANTS = 2 EXITS

EXIT ACCESS DIMENSIONS
CORRIDORS
DOORS, MINIMUM CLEAR WIDTH
DEAD END CORRIDORS
50 FT.
300 FT.
TRAVEL DISTANCE MAXIMUM
300 FT.

ILLUMINATION OF MEANS OF EGRESS
EGRESS WILL BE ILLUMINATED BY BATTERY TYPE LIGHT FIXTURES.

PROTECTION FROM HAZARDS
WATER BASED AUTOMATIC FIRE PROTECTION SYSTEM CONFORMING WITH NFPA 13, TYPICAL THROUGHOUT THE BUILDING UNLESS NOTED OTHERWISE. SPECIFIC OCCUPANCY AREAS WILL BE FIRE OR SMOKE SEPARATED AS IDENTIFIED ABOVE.

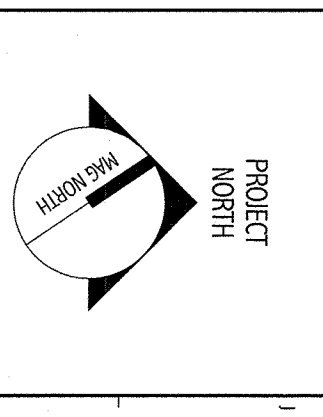
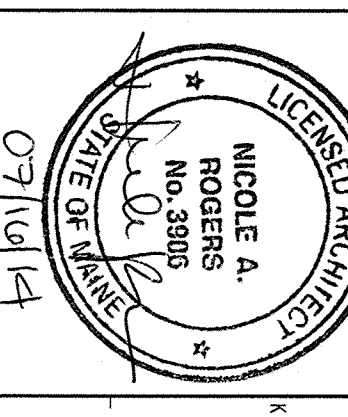
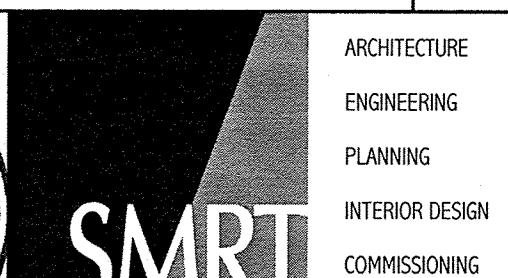
EXTINGUISHMENT
PORTABLE FIRE EXTINGUISHERS IN ACCORDANCE WITH NFPA 101, SECTION 917.4.1.

DETECTION, ALARM AND COMMUNICATION SYSTEMS
FIRE ALARM SYSTEM REQUIRED IN ACCORDANCE WITH NFPA 101, SECTION 906

FURNISHINGS
NO REQUIREMENTS

NOTES:
1. EACH TRADE TO PROVIDE SMOKE OR FIRE SEALANT AT PENETRATIONS AS REQUIRED FOR WALL TYPE, ALL FIRE SEALANT, FIRE STOPPING ASSEMBLIES SHALL BE U.L. RATED.

144 Fore Street/P.O. Box 618
Portland, Maine 04104
tel. (207) 772-3846
fax. (207) 772-1070
www.smrinc.com



OCCUPATIONAL HEALTH SUITE - PHASE 2
PORTLAND, ME
PERMIT SET
07/16/14

NO.	DESCRIPTION	DATE	CURRENT ISSUE STATUS:

GRAPHIC SCALE
0" = 1'

SCALE: As indicated

PROJECT MANAGER: MAB

DATE OF RECORD: 11/16/14

PROJECT NO.: 13162

DATE: 07/16/14

SHEET TITLE: PROJECT INFO & LIFE SAFETY

SHEET NO.: AF-100