

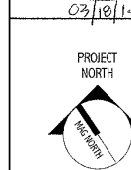
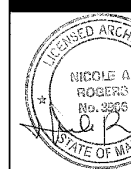
MERCY HOSPITAL OCCUPATIONAL HEALTH SUITE

FORE RIVER M.O.B.

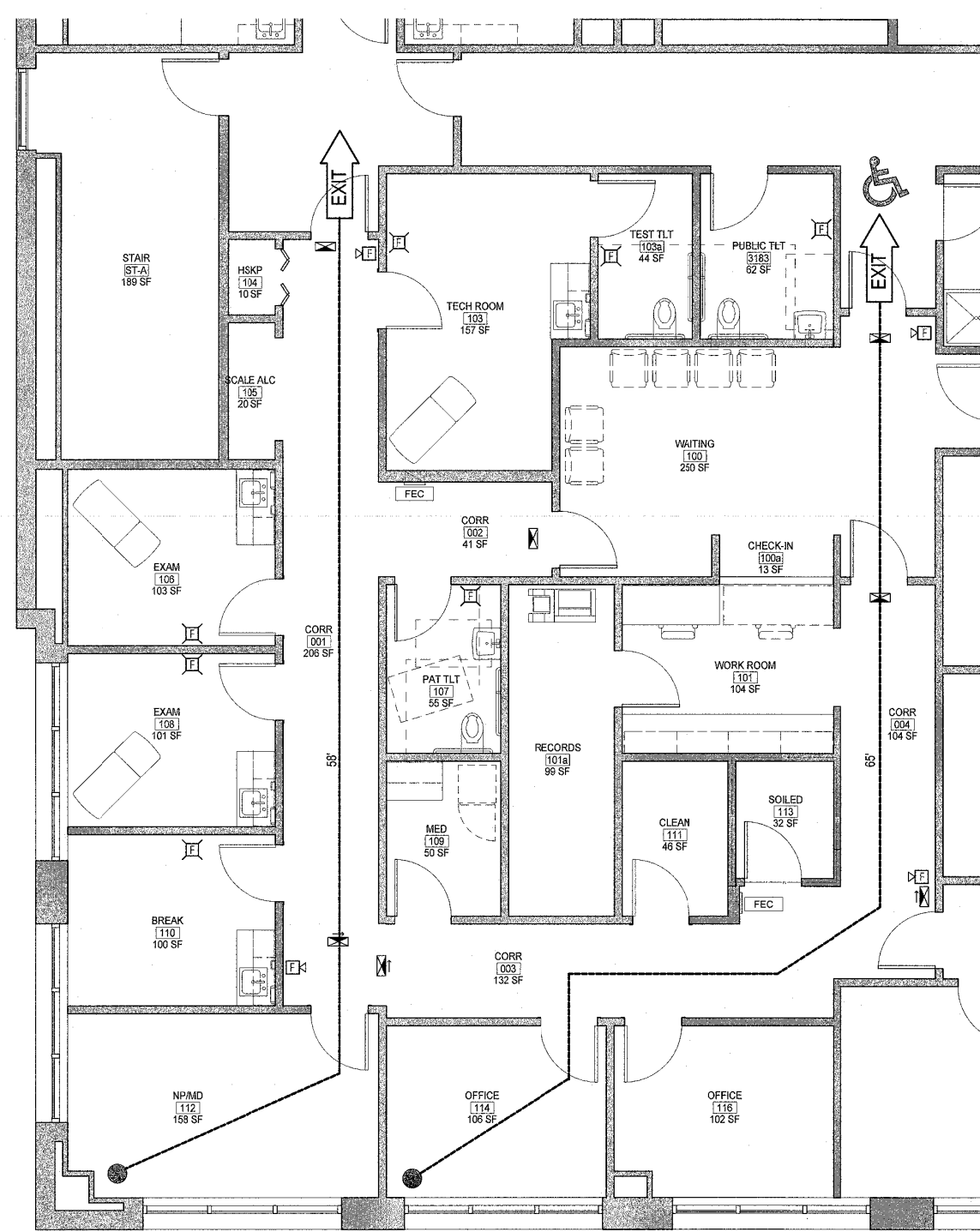
PERMIT SET

144 Fore Street, 5th Fl. S15
Portland, Maine 04104
Tel: (207) 775-3846
Fax: (207) 775-1070
www.earlinc.com

ARCHITECTURE
ENGINEERING
PLANNING
INTERIOR DESIGN
COMMISSIONING



OCCUPATIONAL HEALTH SUITE
PORTLAND, ME
PERMIT SET
03/17/14
CURRENT CODE STATUS:



LIFE SAFETY LEGEND

- H2 — 2 HOUR RATED HORIZONTAL EXIT & SMOKE BARRIER
- O2 — 2 HOUR RATED OCCUPANCY SEPARATION & SMOKE BARRIER
- F2 — 2 HOUR RATED FIRE BARRIER
- F1 — 1 HOUR RATED FIRE BARRIER
- S2 — 2 HOUR RATED SMOKE BARRIER
- S1 — 1 HOUR RATED SMOKE BARRIER
- S0 — SMOKE PARTITION
- ⊙ EXIT DISCHARGE
- ⊙ SMOKE CONTAINMENT BARRIER
- 172' TRAVEL DISTANCE
- FEC FIRE EXTINGUISHER CABINET
- FE FIRE EXTINGUISHER WALL HUNG
- EXIT EGRESS DOOR
- F FIRE ALARM VISIBLE ONLY
- F FIRE ALARM AUDIBLE/VISIBLE NOTIFICATION APPLIANCE (GENERAL EVACUATION)
- EXIT SIGN
- ♿ ACCESSIBLE ENTRY/EGRESS

NOTE:
1. REUSE EXISTING EXIT SIGNS AND DEVICES
2. MEET REQUIREMENTS FOR FOOTCANDLE LEVEL FOR EMERGENCY LIGHTING
3. REUSE EXISTING FIRE EXTINGUISHER CABINETS

CODE AND STANDARD APPLICABLE TO SCOPE OF PROFESSIONAL SERVICES REQUESTED

LIFE SAFETY CODE:
NFPA, INCLUDING 101 LIFE SAFETY CODE, 2012 EDITION
AUTHORITY HAVING JURISDICTION:
MAINE DEPARTMENT OF PUBLIC SAFETY
FIRE MARSHAL'S OFFICE
45 COMMERCE DRIVE, SUITE 1
AUGUSTA, ME 04330
207-628-3884

BUILDING CODE:
INTERNATIONAL BUILDING CODE (IBC) 2009
AUTHORITY HAVING JURISDICTION:
CITY OF PORTLAND
PLANNING & URBAN DEVELOPMENT DEPARTMENT
389 CONGRESS STREET
PORTLAND, ME 04101

HANDICAPPED ACCESSIBILITY STANDARD:
AMERICANS WITH DISABILITIES ACT ACCESSIBILITY GUIDELINES
AUTHORITY HAVING JURISDICTION:
FIRE MARSHAL'S OFFICE
45 COMMERCE DRIVE, SUITE 1
AUGUSTA, ME 04330
207-628-3884

BASIC LIFE SAFETY AND BUILDING CODE CRITERIA
DESCRIPTION OF BUILDING FUNCTION
EXISTING, FOUR STORY COMMERCIAL OFFICE BUILDING (DOCTORS OFFICE)

OCCUPANCY CLASSIFICATION
IBC: EXISTING BUSINESS (CHAPTER 39)

USE GROUP CLASSIFICATION
IBC: BUSINESS

SPECIFIC OCCUPANCY AREAS (BOCA TABLE 302.1.1)
DESCRIPTION
WASTE & SOILED COLLECTION LINEN ROOM
STORAGE ROOMS >50 SF AND <100 SF
STORAGE ROOMS GREATER THAN 100 SF

SEPARATION
SPRINKLERS + 1 HOUR
SPRINKLERS + SMOKE PARTITIONS
SPRINKLERS + SMOKE PARTITIONS

ACCESSORY USE AREA (BOCA, 302.1.2)
NONE IDENTIFIED

SPECIAL USE AND OCCUPANCY
NONE IDENTIFIED

TYPE OF CONSTRUCTION
NFPA: TYPE II (III) PROTECTED NON-COMBUSTIBLE
IBC: TYPE 2B

BUILDING IS PROTECTED THROUGHOUT BY AUTOMATIC FIRE SPRINKLER SYSTEM IN CONFORMANCE WITH NFPA 13

TENANT AREA
AREA: 2,200 SF

MEANS OF EGRESS
OCCUPANT LOAD:
BUSINESS = 100 SF / OCCUPANT
2190 SF / 100 SF = 22 OCCUPANTS

MINIMUM NUMBER OF EXITS
22 < 500 OCCUPANTS = 2 EXITS

EXIT ACCESS DIMENSIONS
CORRIDORS 44 INCHES (60" PER FG GUIDELINES FOR HEALTHCARE)
DOORS: MINIMUM CLEAR WIDTH 32 INCHES
DEAD END CORRIDORS 50 FT.
COMMON PATH OF TRAVEL MAXIMUM 100 FT.
TRAVEL DISTANCE MAXIMUM 300 FT.

ILLUMINATION OF MEANS OF EGRESS
EGRESS WILL BE ILLUMINATED BY BATTERY TYPE LIGHT FIXTURES.

PROTECTION FROM HAZARDS
WATER BASED AUTOMATIC FIRE PROTECTION SYSTEM CONFORMING WITH NFPA 13, TYPICAL THROUGHOUT THE BUILDING UNLESS NOTED OTHERWISE SPECIFIC OCCUPANCY AREAS AREAS WILL BE FIRE OR SMOKE SEPARATED AS IDENTIFIED ABOVE

EXTINGUISHMENT
PORTABLE FIRE EXTINGUISHERS IN ACCORDANCE WITH NFPA 101, SECTION 9.7.4.1.

DETECTION, ALARM AND COMMUNICATION SYSTEMS
FIRE ALARM SYSTEM REQUIRED IN ACCORDANCE WITH NFPA 101, SECTION 908

FURNISHINGS
NO REQUIREMENTS

NOTES:
1. EACH TRADE TO PROVIDE SMOKE OR FIRE SEALANT AT PENETRATIONS AS REQUIRED FOR WALL TYPE. ALL FIRE SEALANT, FIRE STOPPING ASSEMBLIES SHALL BE U.L. RATED.

1 LIFE SAFETY PLAN
1/4" = 1'-0"

NO.	DATE	DESCRIPTION

GRAPHIC SCALE:
0" 1"

SCALE: As Indicated
PROJECT MANAGER: CDP
DRAWN BY: NAB
DATE OF RECORD: NAB
PROJECT NO.: 13162
DATE: 03/18/14

SHEET TITLE:
PROJECT INFO & LIFE SAFETY

SHEET No.: AE-100