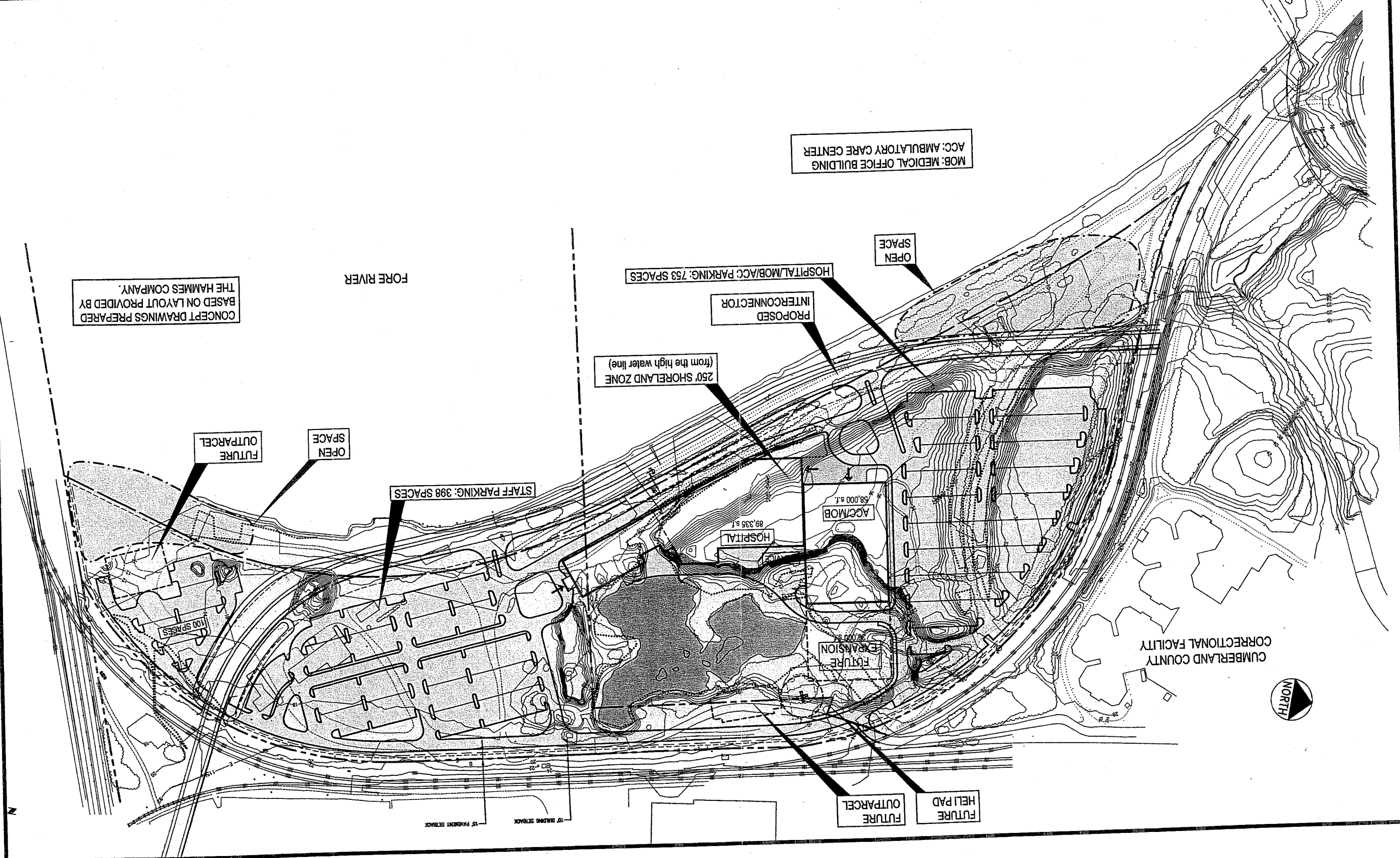
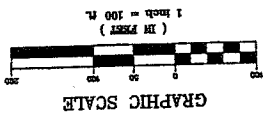


7B-A-1

175 Fore River Parkway
IH to IH Contract Zone
Mercy Hospital

on spreadsheet

PROJECT MERCY HOSPITAL RELOCATION PROJECT		SHEET TITLE CONCEPT MASTER PLAN	
CLIENT MERCY HEALTH SYSTEMS OF MAINE		DRAWN: KEM DATE: OCT, 2001	
REVISIONS		CHECKED: SRB JOB NO. 2149	
REV	DATE	DESCRIPTION	FILE NAME: 2149-OPTIONS
2	10/18/01	REVISED CONCEPT RESUBMITTED TO PLANNING AUTHORITY	
1	9/21/01	SUBMITTED TO PENNSYLVANIA PLANNING AUTHORITY	
P.E.		DESIGNED: SRB SCALE: 1"=100'	
LIC. #		DRAWN: KEM DATE: OCT, 2001	
SHEET #		SHEET 5A	
PROJECT		PROJECT	



CONCEPT DRAWINGS PREPARED BY
BASED ON LAYOUT PROVIDED BY
THE HAMMES COMPANY.

MOB: MEDICAL OFFICE BUILDING
ACC: AMBULATORY CARE CENTER

OPEN
SPACE

HOSPITAL/MOB/ACC PARKING: 753 SPACES

PROPOSED
INTERCONNECTOR

250' SHORELAND ZONE
(from the high water line)

STAFF PARKING: 398 SPACES

FUTURE
OUTPARCEL

OPEN
SPACE

CUMBERLAND COUNTY
CORRECTIONAL FACILITY



FUTURE
HELL PAD

FUTURE
OUTPARCEL

44. 20



Deluca-Hoffman Associates, Inc.
778 MAIN STREET, SUITE 8
SOUTH PORTLAND, ME 04106
(207) 775-1121
DHAI@MAINE.RR.COM

FILE NAME:	2194P-PREVOUSEXPERIENCE		
CHECKED:	SRB	JOB NO.	2194P
DESIGNED:	SRB	SCALE:	1" = 1000'+
DRAWN:	JDL	DATE:	MARCH 2001

MERCY HEALTH CARE SYSTEMS PORTLAND, MAINE

AERIAL PHOTOGRAPH WITH CONNECTOR ROAD ALIGNMENT

5



AA26

1.5 acres

BCK



CUMBERLAND COUNTY
CORRECTIONAL FACILITY

FUTURE
HELI PAD

FUTURE
OUTPARCEL

FUTURE
EXPANSION
29,000 s.f.

ACC/MOB
58,000 s.f.

HOSPITAL
89,335 s.f.

STAFF PARKING: 398 SPACES

100 SPACES

OPEN
SPACE

FUTURE
OUTPARCEL

4 acres +/-

250' SHORELAND ZONE
(from the high water line)

PROPOSED
INTERCONNECTOR

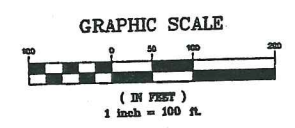
HOSPITAL/MOB/ACC PARKING: 753 SPACES


OPEN
SPACE

FORE RIVER

CONCEPT DRAWINGS PREPARED
BASED ON LAYOUT PROVIDED BY
THE HAMMES COMPANY.

MOB: MEDICAL OFFICE BUILDING
ACC: AMBULATORY CARE CENTER



PROJECT		MERCY HOSPITAL RELOCATION PROJECT		 DeLUCA-HOFFMAN ASSOCIATES, INC. 778 MAIN STREET, SUITE 8 SOUTH PORTLAND, ME 04106 (207) 775-1121 DRA@MAINE.HRR.COM
SHEET TITLE		CONCEPT MASTER PLAN		
CLIENT		MERCY HEALTH SYSTEMS OF MAINE		DRAWN: KEW DATE: OCT. 2001 DESIGNED: SRB SCALE: 1"=100' CHECKED: SRB JOB NO. 2149 FILE NAME: 2149-OPTIONS SHEET 5A
REV	DATE	DESCRIPTION	REVISIONS	P.E. UC #
2	10/19/01	REVISED CONCEPT SUBMITTED TO PLANNING AUTHORITY		
1	8/21/01	SUBMITTED TO PORTLAND PLANNING AUTHORITY		



G:\2149p\PREVEXPERIENCE.dwg Tue Mar 20 08:12:35 2001



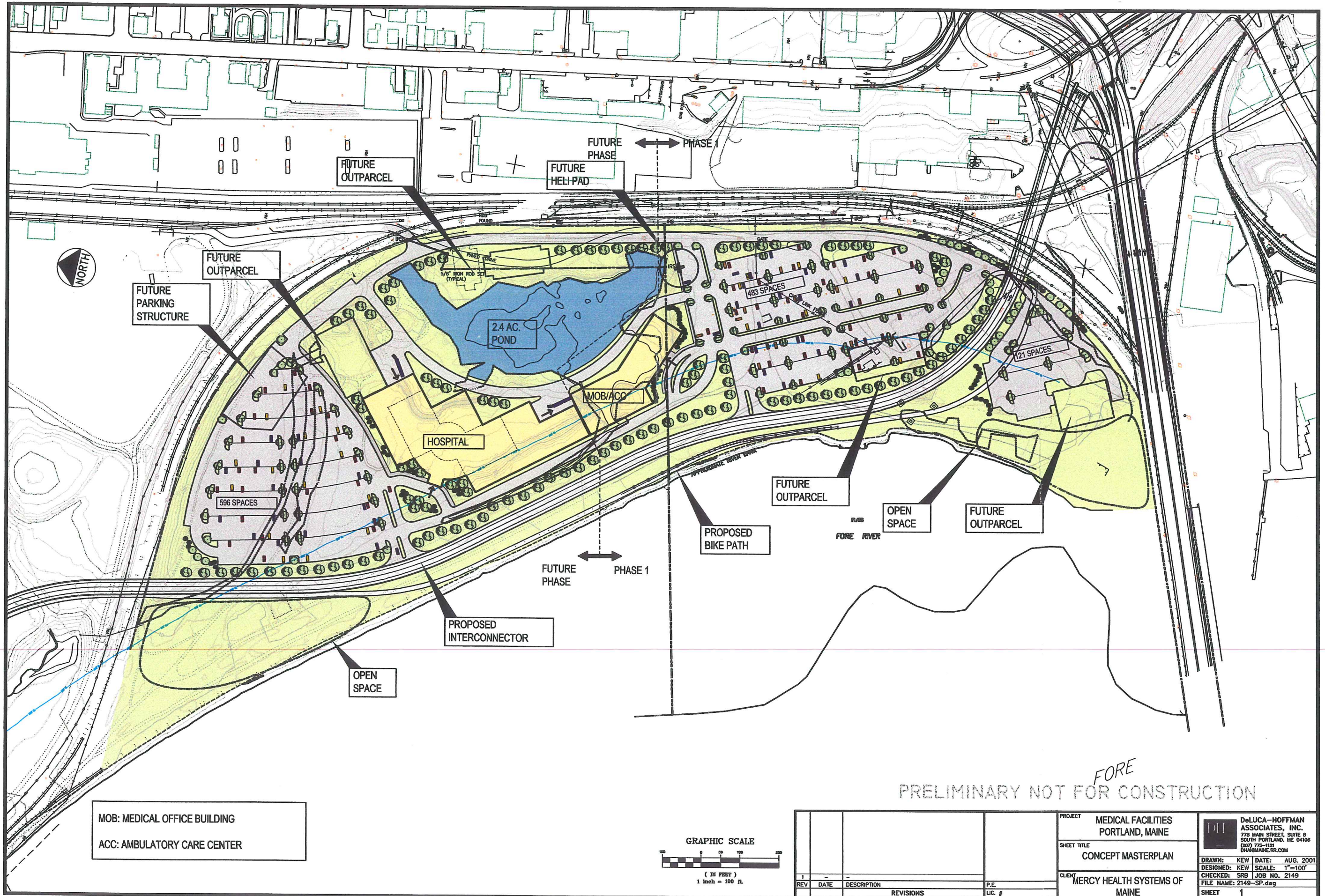
DeLuca-Hoffman Associates, Inc.
 778 MAIN STREET, SUITE 8
 SOUTH PORTLAND, ME 04106
 (207) 775-1121
 DHAI@MAINE.RR.COM

DRAWN:	JDL	DATE:	MARCH 2001
DESIGNED:	SRB	SCALE:	1" = 1000'
CHECKED:	SRB	JOB NO.	2194P
FILE NAME:	2194P-PREVIUSEXPERIENCE		

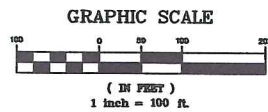
**MERCY HEALTH CARE SYSTEMS
 PORTLAND, MAINE**

**AERIAL PHOTOGRAPH
 WITH CONNECTOR ROAD ALIGNMENT**

FIGURE
5



MOB: MEDICAL OFFICE BUILDING
 ACC: AMBULATORY CARE CENTER



REV	DATE	DESCRIPTION	P.E.	LIC. #
1	-	-	-	-
REVISIONS				

PROJECT: MEDICAL FACILITIES
 PORTLAND, MAINE

SHEET TITLE: CONCEPT MASTERPLAN

CLIENT: MERCY HEALTH SYSTEMS OF
 MAINE

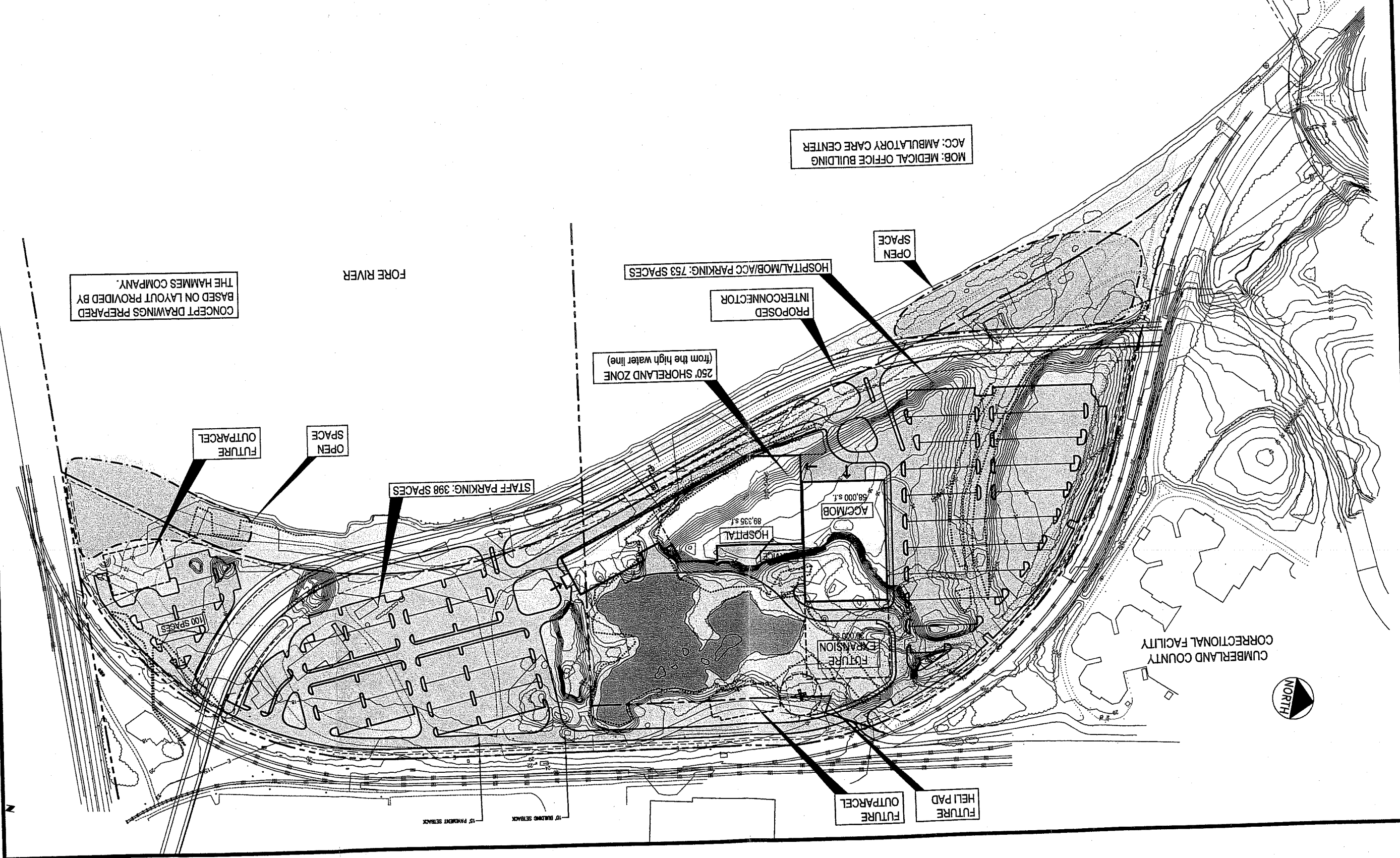
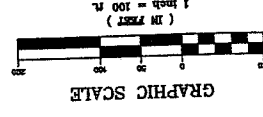
DeLUCA-HOFFMAN
 ASSOCIATES, INC.
 779 MAIN STREET, SUITE B
 SOUTH PORTLAND, ME 04106
 (207) 775-1121
 DRA@MAINE.RR.COM

DRAWN: KEW DATE: AUG. 2001
 DESIGNED: KEW SCALE: 1"=100'
 CHECKED: SRB JOB NO. 2149
 FILE NAME: 2149-SP.dwg
 SHEET 1

PROJECT	MERCY HOSPITAL RELOCATION PROJECT
SHEET TITLE	CONCEPT MASTER PLAN
CLIENT	MERCY HEALTH SYSTEMS OF MAINE
DRAWN: KEM DATE: OCT, 2001	
DESIGNED: SRB SCALE: 1"=100'	
CHECKED: SRB JOB NO. 2149	
FILE NAME: 2149-OPTIONS	
SHEET	5A

REV	DATE	DESCRIPTION
1	9/2/01	SUBMITTED TO PORTLAND PLANNING AUTHORITY
2	10/19/01	REVISED CONCEPT, RESUBMITTED TO PLANNING AUTHORITY

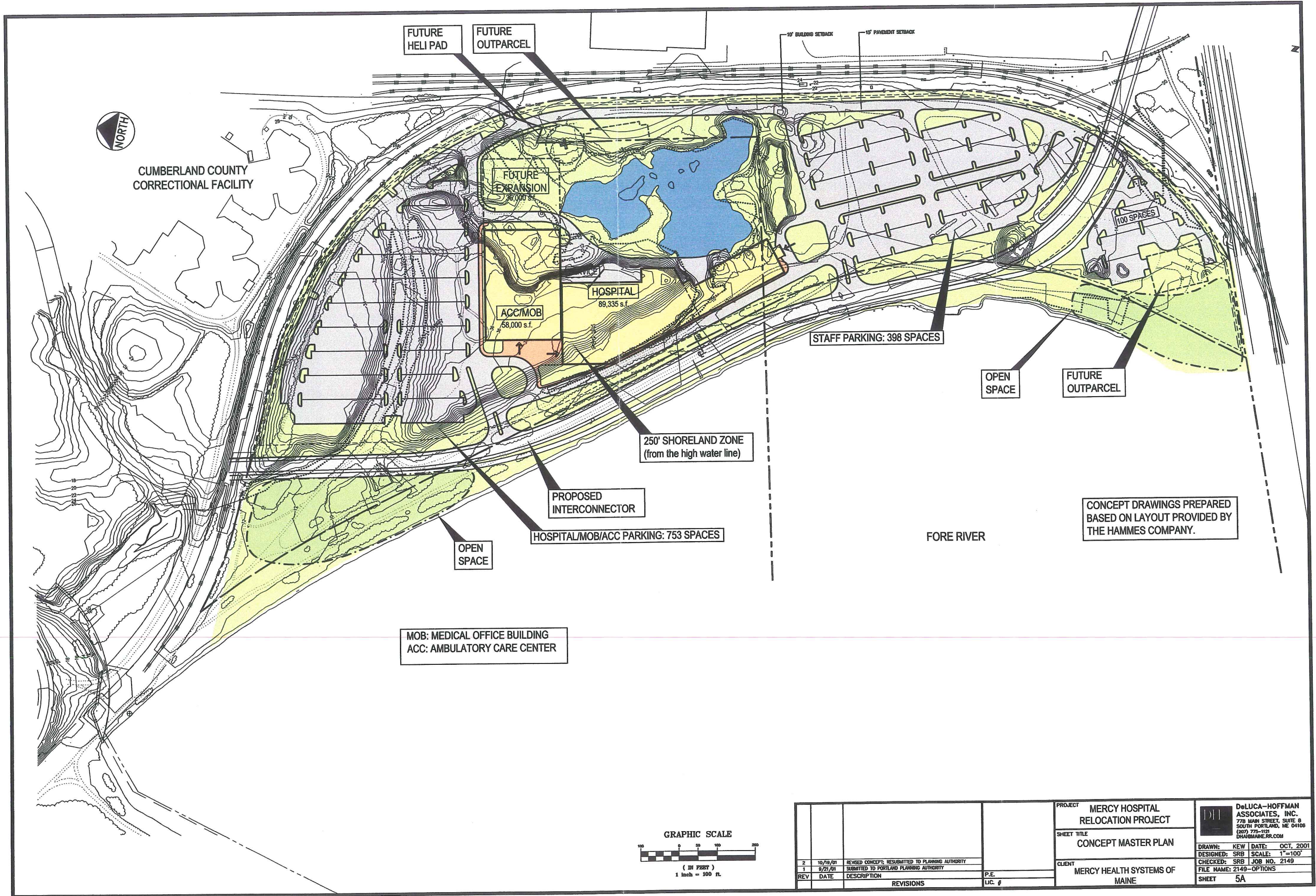
REV	DATE	DESCRIPTION
1	9/2/01	SUBMITTED TO PORTLAND PLANNING AUTHORITY
2	10/19/01	REVISED CONCEPT, RESUBMITTED TO PLANNING AUTHORITY



CONCEPT DRAWINGS PREPARED BY
BASED ON LAYOUT PROVIDED BY
THE HAMMES COMPANY.



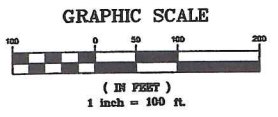
CUMBERLAND COUNTY
CORRECTIONAL FACILITY



CUMBERLAND COUNTY
CORRECTIONAL FACILITY

MOB: MEDICAL OFFICE BUILDING
ACC: AMBULATORY CARE CENTER

CONCEPT DRAWINGS PREPARED
BASED ON LAYOUT PROVIDED BY
THE HAMMES COMPANY.



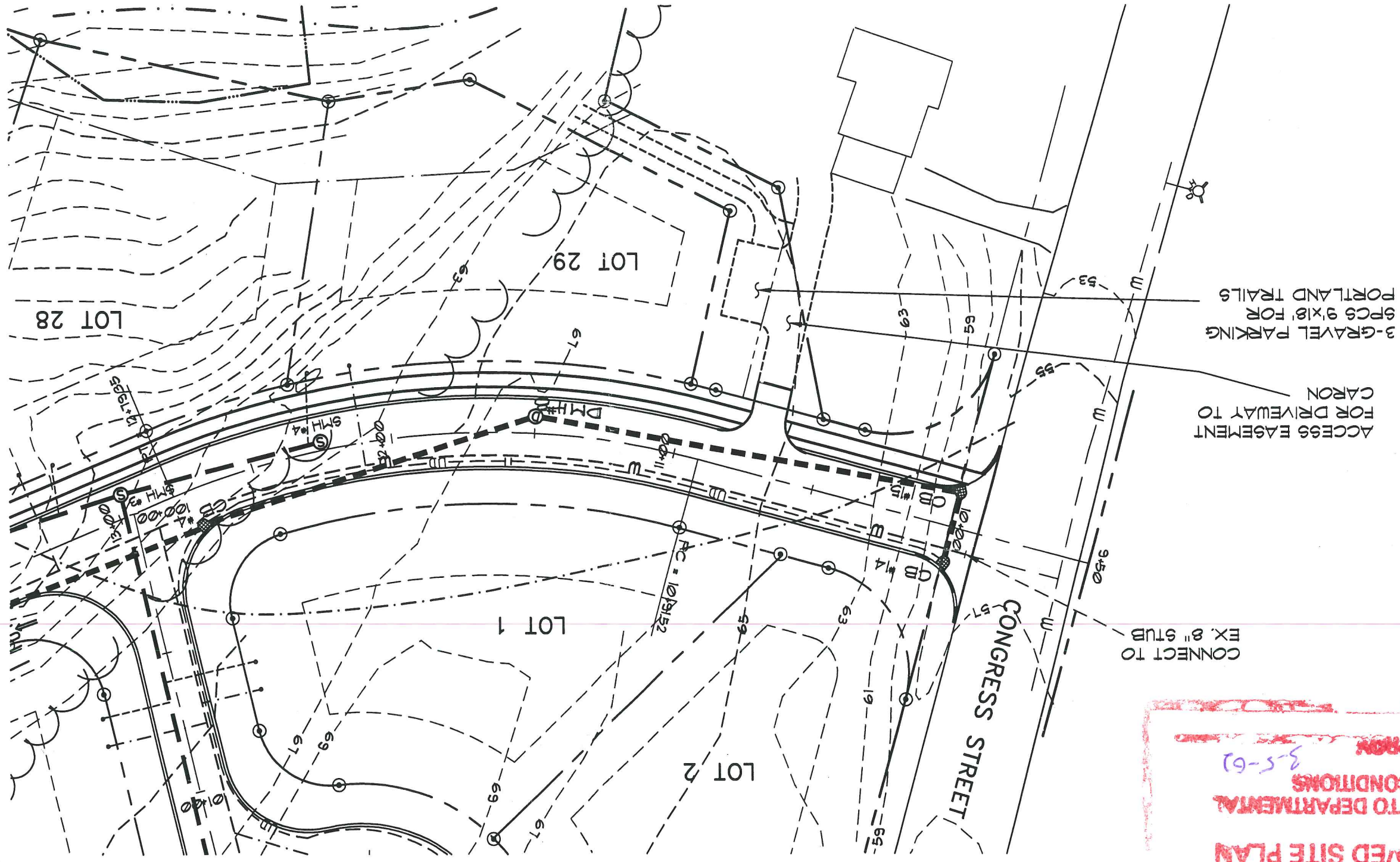
REV	DATE	DESCRIPTION	P.E.	LIC. #
2	10/19/01	REVISED CONCEPT; RESUBMITTED TO PLANNING AUTHORITY		
1	9/21/01	SUBMITTED TO PORTLAND PLANNING AUTHORITY		
REVISIONS				

PROJECT	MERCY HOSPITAL RELOCATION PROJECT
SHEET TITLE	CONCEPT MASTER PLAN
CLIENT	MERCY HEALTH SYSTEMS OF MAINE
DRAWN:	KEW DATE: OCT. 2001
DESIGNED:	SRB SCALE: 1"=100'
CHECKED:	SRB JOB NO. 2149
FILE NAME:	2149-OPTIONS
SHEET	5A

DeLUCA-HOFFMAN ASSOCIATES, INC.
778 MAIN STREET, SUITE 8
SOUTH PORTLAND, ME 04106
(207) 775-1121
DHA@MAINE.RR.COM

CITY OF PORTLAND
 APPROVED SITE PLAN
 SUBJECT TO DEPARTMENTAL
 CONDITIONS
 3-5-62
 DATE OF APPROVAL

Revised



GRAPHIC SCALE



RIVERS EDGE DRIVE PARTIAL PLAN
 PARTIAL PLAN OF SHEET P1
 SCALE: 1" = 40'

Date: MAR. 1, 2002
 Scale: AS SHOWN
 STORMDRAIN REALIGNMENT

RIVER'S EDGE
 CONGRESS STREET • PORTLAND • MAINE
 Prepared for:
 Stroudwater Farm Associates

HIGH POINT ELEV = 60.66
 HIGH POINT STA = 11+58.58
 PVI STA = 11+58.58
 PVI ELEV = 61.78
 A.D. = -6.00
 K = 25.00
 150.00' VC

CB #14, RIM 56.80
 STA. 10+00, 13.4'L
 CB #15, RIM 56.80
 STA. 10+00, 13.4'R

BVCS: 10+83.58
 BVCE: 59.53

DMH #8, RIM 60.42
 STA. 11+50, 6'R

SMH #4, RIM 59.69
 STA. 12+25, 3'R
 EVCS: 12+33.58
 EVCE: 59.53

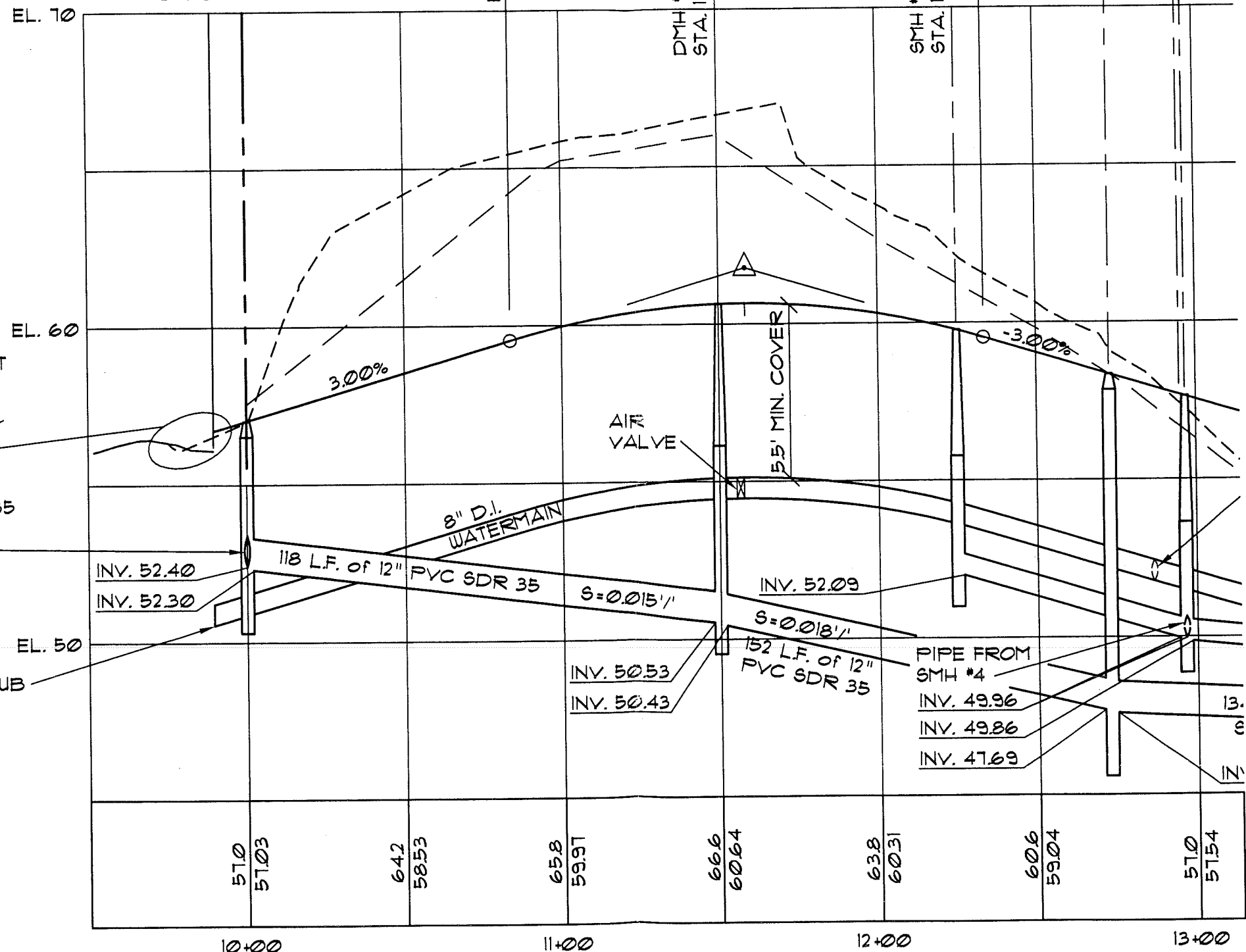
CB #4, RIM 51.91
 STA. 12+13, 14.2'L

¢ CUL-DE-SAC #1
 SMH #3, RIM 51.39
 STA. 12+96.55, 8'R

ADJUST ROAD INTERSECT
 AS REQ'D, CONGRESS
 STREET PAVEMENT WAS
 MODIFIED AFTER SURVEY
 WAS CONDUCTED.

23 L.F. of 12"φ PVC SDR 35
 S=0.017' FROM CB #14
 INV. @ CB #14 52.63

CONNECT TO EX. 8" STUB



RIVER'S EDGE
 CONGRESS STREET • PORTLAND • MAINE
 Prepared for:
 Stroudwater Farm Associates

Date:
 MAR. 1, 2002
 Scale:
 AS SHOWN

RIVERS EDGE DRIVE PARTIAL PROFILE

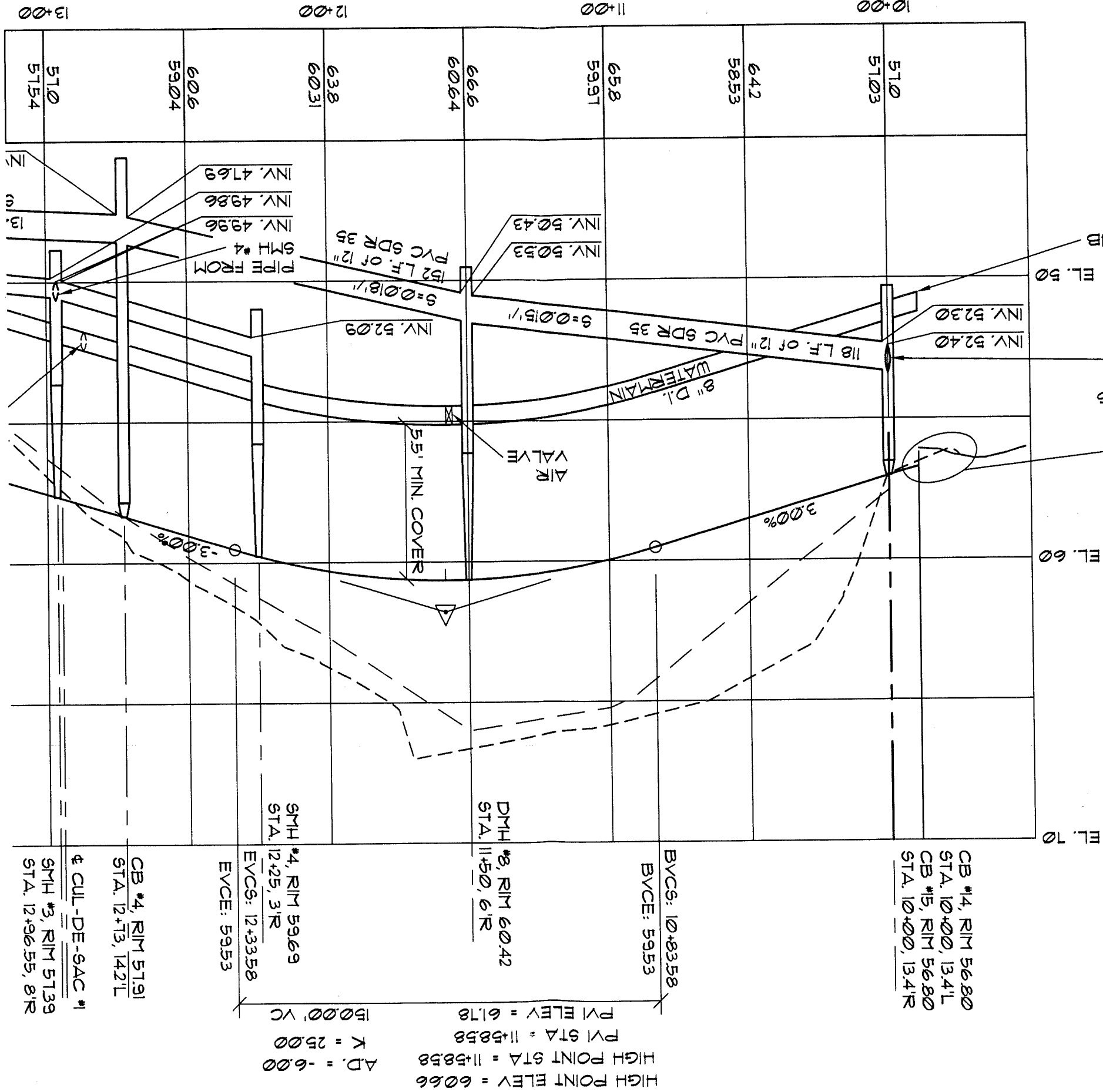
PARTIAL PROFILE OF SHEET P1

SCALE: HORIZ. 1"=40'
 VERT. 1"=4'

STORMDRAIN
 REALIGNMENT

RIVERS EDGE DRIVE PARTIAL PROFILE

SCALE: HORIZ. 1"=40'
VERT. 1"=4'



ADJUST ROAD INTERSECT AS REQ'D, CONGRESS STREET PAVEMENT WAS MODIFIED AFTER SURVEY WAS CONDUCTED.
 23 L.F. OF 12" PVC SDR 35 6=0.01' FROM CB #14
 INV. # CB #14 52.63
 INV. 52.40
 INV. 52.30
 EL. 50
 CONNECT TO EX. 8" STUB

HIGH POINT ELEV = 60.66
 HIGH POINT STA = 11+58.58
 PVI STA = 11+58.58
 PVI ELEV = 61.78
 A.D. = -6.00
 K = 25.00
 150.00' VC

DMH #8, RIM 60.42
 STA. 11+50, 6'R
 SMH #4, RIM 59.69
 STA. 12+25, 3'R
 EVCS: 12+33.58
 EVCE: 59.53
 CB #4, RIM 51.91
 STA. 12+73, 14.2'L
 CUL-DE-SAC #1
 SMH #3, RIM 51.39
 STA. 12+96.55, 8'R

STORMDRAIN REALIGNMENT
 Date: MAR. 1, 2002
 Scale: AS SHOWN

RIVER'S EDGE
 CONGRESS STREET • PORTLAND • MAINE
 Prepared for:
 Stroudwater Farm Associates

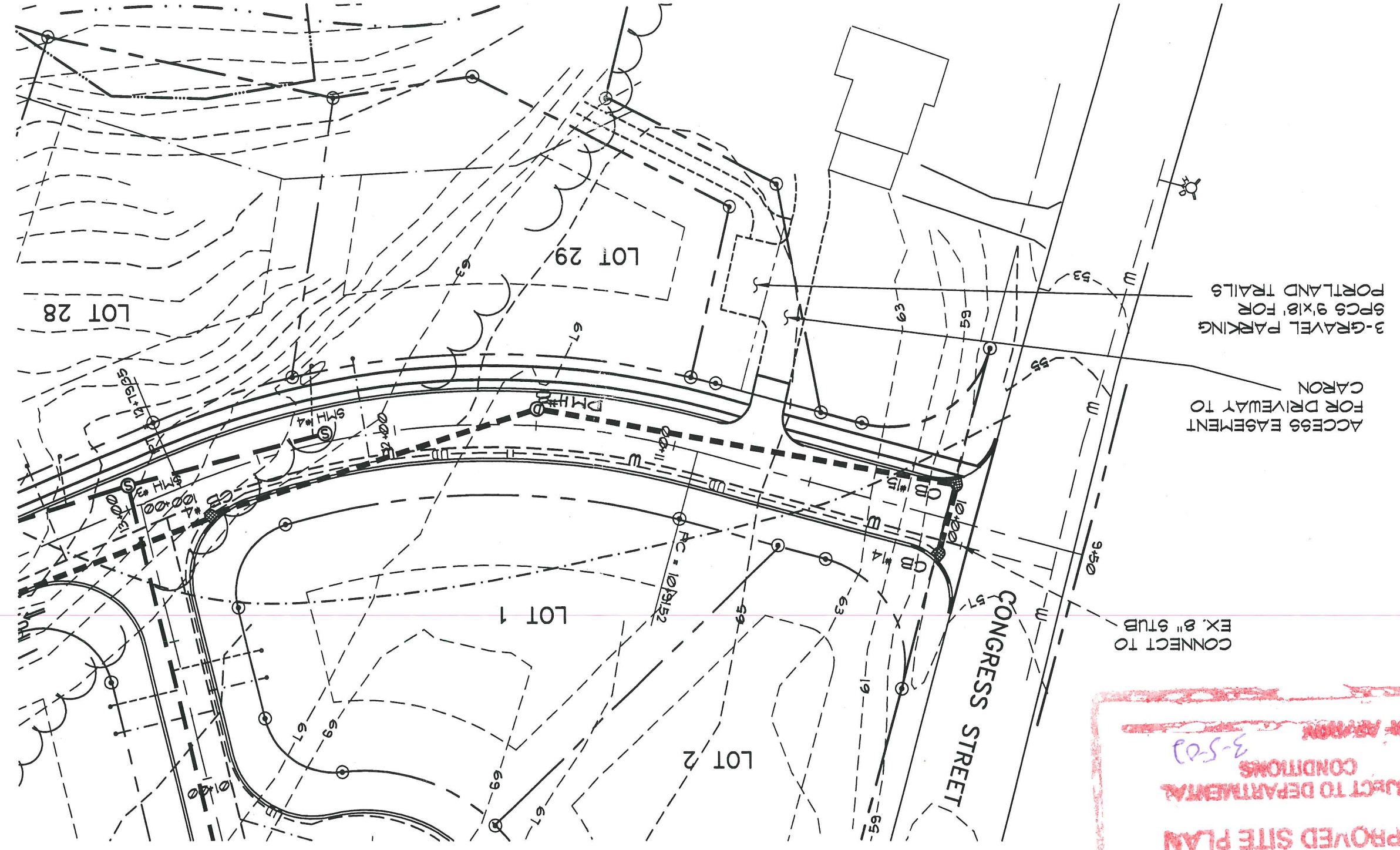
1 inch = 40 ft.
(IN FEET)



GRAPHIC SCALE

RIVERS EDGE DRIVE PARTIAL PLAN
PARTIAL PLAN OF SHEET P1
SCALE: 1"=40'

Date: MAR. 1, 2002
Scale: AS SHOWN
STORMDRAIN REALIGNMENT



CITY OF PORTLAND
APPROVED SITE PLAN
SUBJECT TO DEPARTMENTAL
CONDITIONS
3-5-02
DATE OF APPROVAL

Revised

RIVER'S EDGE
CONGRESS STREET • PORTLAND • MAINE
Prepared for:
Stroudwater Farm Associates



Deluca-Hoffman Associates, Inc.
778 MAIN STREET, SUITE 8
SOUTH PORTLAND, ME 04106
(207) 775-1121
DHAM@MAINE.RR.COM

DRAWN:	JDL	DATE:	MARCH 2001
DESIGNED:	SRB	SCALE:	1" = 1000'+
CHECKED:	SRB	JOB NO.:	2194P
FILE NAME:	2194P-PROVISEXPERIENCE		

MERCY HOSPITAL DEVELOPMENT PROPOSAL

AERIAL PHOTOGRAPH w/ CONNECTOR ROAD ALIGNMENT





Deluca-Hoffman Associates, Inc.
778 MAIN STREET, SUITE 8
SOUTH PORTLAND, ME 04106
(207) 775-1121
DHA@MAINE.RR.COM

FILE NAME:	2194P-PREVIOUS EXPERIENCE		
CHECKED:	SRB	JOB NO.	2194P
DESIGNED:	SRB	SCALE:	1" = 1000'+
DRAWN:	JDL	DATE:	MARCH 2001

MERCY HOSPITAL DEVELOPMENT PROPOSAL

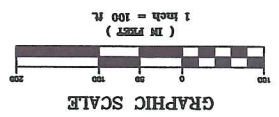
AERIAL PHOTOGRAPH w/ CONNECTOR ROAD ALIGNMENT

5

FIGURE

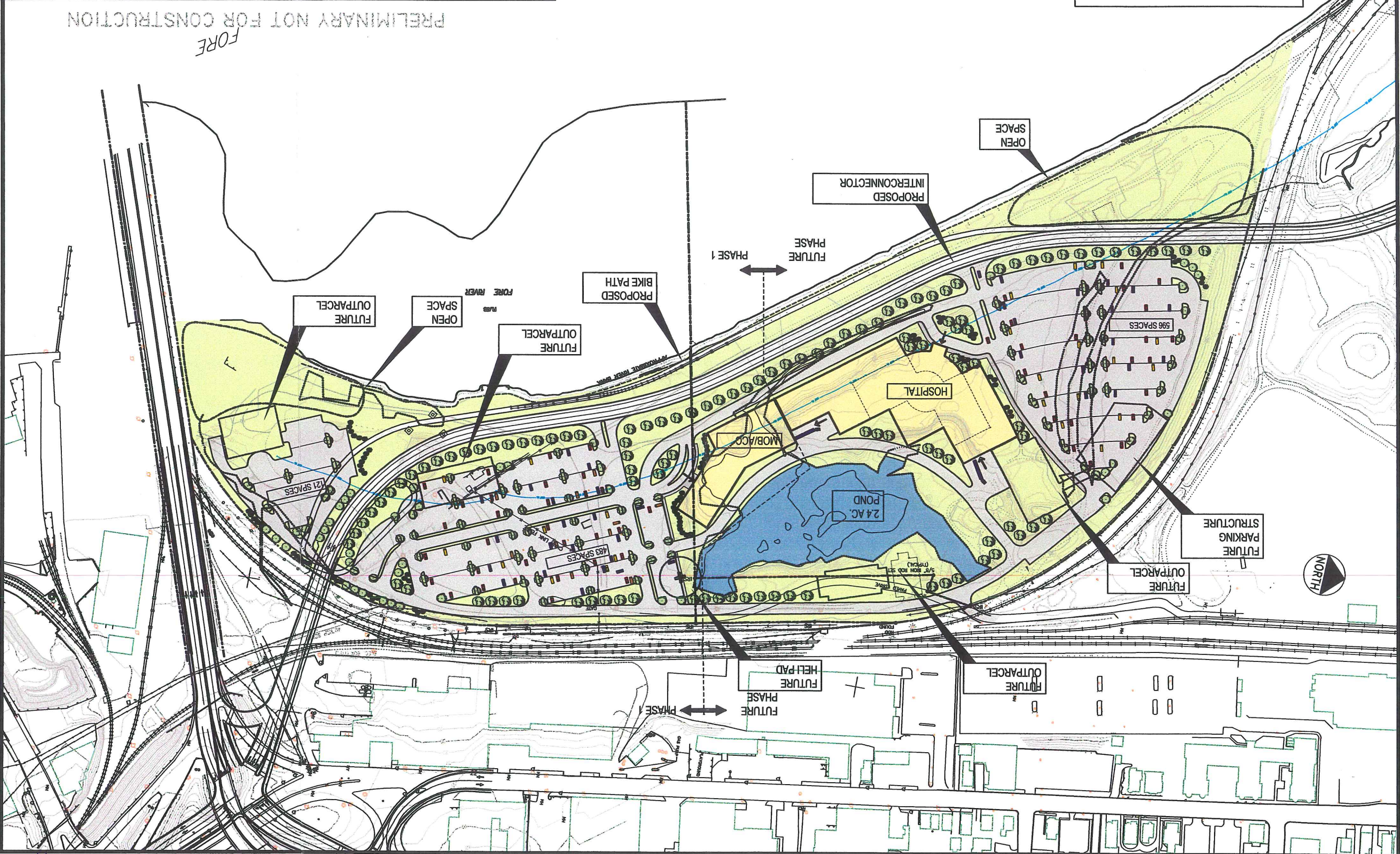


PROJECT	MEDICAL FACILITIES	PORTLAND, MAINE
SHEET TITLE	CONCEPT MASTERPLAN	
CLIENT	MERCY HEALTH SYSTEMS OF MAINE	
FILE NAME:	2149-SP.dwg	SHEET 1
CHECKED:	SRB JOB NO. 2149	
DESIGNED:	KEM SCALE: 1"=100'	
DRAWN:	KEM DATE: AUG. 2001	
D'LUCA-HOFFMAN ASSOCIATES, INC. 770 MAIN STREET, SUITE 8 PORTLAND, ME 04108 DHANRAJ@DHLA.COM		



MOB: MEDICAL OFFICE BUILDING
ACC: AMBULATORY CARE CENTER

PRELIMINARY NOT FOR CONSTRUCTION
FORE



#1