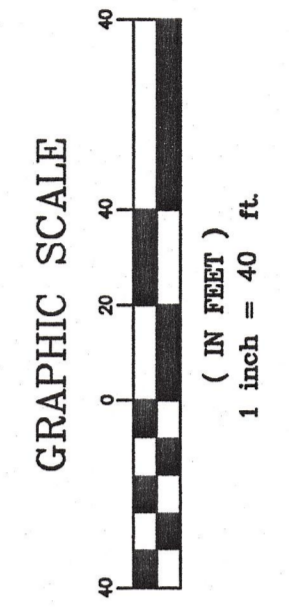


CITY OF PORTLAND  
 APPROVED SITE PLAN  
 Subject to Dept. Conditions  
 Date of Approval: 5-11-08 # 2005-0003  
 as amendments to Mercy Plans approved  
 dated 8-8-06 (# 2005-0048)



**DH**  
 DALUCA-HOFFMAN  
 ASSOCIATES, INC.  
 778 MAIN STREET, SUITE 8  
 PORTLAND, ME 04106  
 PHONE: 603.763.1111  
 FAX: 603.763.1112  
 WWW.DHALUCAHOFFMAN.COM

PROJECT: MERCY AT THE FORE  
 SHEET TITLE: UTILITY PLAN - SOUTH  
 CLIENT: MERCY HOSPITAL

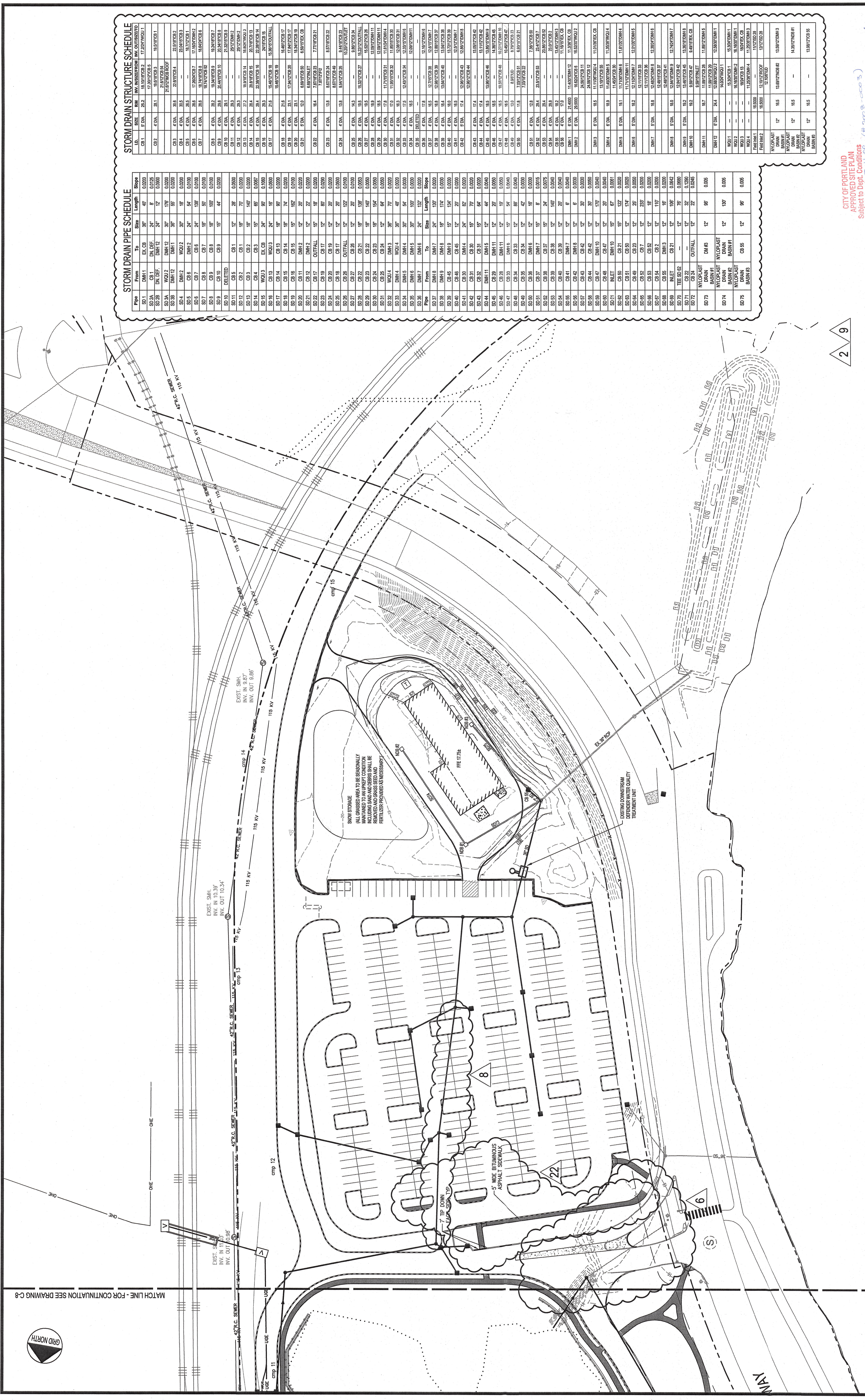
DESIGNED: DEB DATE: 11.01.01  
 CHECKED: SRB SCALE: 1"=40'  
 FILE NAME: 2145.01-UP3  
 SHEET: C-11

REV.	DATE	DESCRIPTION	REVISIONS
9	11.02.07	FINAL APPROVAL PLANS SUBMITTED TO CITY OF PORTLAND / REVISED POWER AND FUEL STORAGE	
8	10.03.07	FINAL APPROVAL PLANS SUBMITTED TO CITY OF PORTLAND	
7	9.15.06	FINAL APPROVAL PLANS SUBMITTED TO CITY OF PORTLAND	
6	7.28.06	REVISED TO CITY OF PORTLAND	
5	7.28.06	REVISED TO CITY OF PORTLAND	
4	6.21.06	REVISED TO CITY OF PORTLAND	
3	6.03.06	REVISED TO CITY OF PORTLAND	
2	6.03.06	REVISED TO CITY OF PORTLAND	
1	11.02.02	SITE LOCATION OF DEVELOPMENT PERMIT SUBMISSION	

MUD FLATS



MATCH LINE - FOR CONTINUATION SEE DRAWING C-10



**STORM DRAIN PIPE SCHEDULE**

From	To	Size	Length	Slope
S01	DMH1	12"	10.00	0.000
S02	DMH2	12"	10.00	0.000
S03	DMH3	12"	10.00	0.000
S04	DMH4	12"	10.00	0.000
S05	DMH5	12"	10.00	0.000
S06	DMH6	12"	10.00	0.000
S07	DMH7	12"	10.00	0.000
S08	DMH8	12"	10.00	0.000
S09	DMH9	12"	10.00	0.000
S10	DMH10	12"	10.00	0.000
S11	DMH11	12"	10.00	0.000
S12	DMH12	12"	10.00	0.000
S13	DMH13	12"	10.00	0.000
S14	DMH14	12"	10.00	0.000
S15	DMH15	12"	10.00	0.000
S16	DMH16	12"	10.00	0.000
S17	DMH17	12"	10.00	0.000
S18	DMH18	12"	10.00	0.000
S19	DMH19	12"	10.00	0.000
S20	DMH20	12"	10.00	0.000
S21	DMH21	12"	10.00	0.000
S22	DMH22	12"	10.00	0.000
S23	DMH23	12"	10.00	0.000
S24	DMH24	12"	10.00	0.000
S25	DMH25	12"	10.00	0.000
S26	DMH26	12"	10.00	0.000
S27	DMH27	12"	10.00	0.000
S28	DMH28	12"	10.00	0.000
S29	DMH29	12"	10.00	0.000
S30	DMH30	12"	10.00	0.000
S31	DMH31	12"	10.00	0.000
S32	DMH32	12"	10.00	0.000
S33	DMH33	12"	10.00	0.000
S34	DMH34	12"	10.00	0.000
S35	DMH35	12"	10.00	0.000
S36	DMH36	12"	10.00	0.000
S37	DMH37	12"	10.00	0.000
S38	DMH38	12"	10.00	0.000
S39	DMH39	12"	10.00	0.000
S40	DMH40	12"	10.00	0.000
S41	DMH41	12"	10.00	0.000
S42	DMH42	12"	10.00	0.000
S43	DMH43	12"	10.00	0.000
S44	DMH44	12"	10.00	0.000
S45	DMH45	12"	10.00	0.000
S46	DMH46	12"	10.00	0.000
S47	DMH47	12"	10.00	0.000
S48	DMH48	12"	10.00	0.000
S49	DMH49	12"	10.00	0.000
S50	DMH50	12"	10.00	0.000
S51	DMH51	12"	10.00	0.000
S52	DMH52	12"	10.00	0.000
S53	DMH53	12"	10.00	0.000
S54	DMH54	12"	10.00	0.000
S55	DMH55	12"	10.00	0.000
S56	DMH56	12"	10.00	0.000
S57	DMH57	12"	10.00	0.000
S58	DMH58	12"	10.00	0.000
S59	DMH59	12"	10.00	0.000
S60	DMH60	12"	10.00	0.000
S61	DMH61	12"	10.00	0.000
S62	DMH62	12"	10.00	0.000
S63	DMH63	12"	10.00	0.000
S64	DMH64	12"	10.00	0.000
S65	DMH65	12"	10.00	0.000
S66	DMH66	12"	10.00	0.000
S67	DMH67	12"	10.00	0.000
S68	DMH68	12"	10.00	0.000
S69	DMH69	12"	10.00	0.000
S70	DMH70	12"	10.00	0.000
S71	DMH71	12"	10.00	0.000
S72	DMH72	12"	10.00	0.000
S73	DMH73	12"	10.00	0.000
S74	DMH74	12"	10.00	0.000
S75	DMH75	12"	10.00	0.000

CITY OF PORTLAND  
 APPROVED SITE PLAN  
 Subject to Dept. Conditions  
 Date of Approval: 3/1/2008  
 as amended to Heavy Road Approval  
 dated 8/1/08 to 8/1/08

- ▲ CSK-2 8.25.06
- ▲ CSK-4 10.17.06
- ▲ CSK-9 10.17.06
- ▲ CSK-11 1.06.06
- ▲ CSK-22 8.16.07

**MUD FLATS**

MATCH LINE - FOR CONTINUATION SEE DRAWING C-8

PROJECT: MERCY AT THE FORE

SHEET TITLE: GRADING AND DRAINAGE PLAN - SOUTH

CLIENT: MERCY HOSPITAL

DESIGNED BY: J. STEPHEN R. BUSHEI

CHECKED BY: J. STEPHEN R. BUSHEI

DATE: 11/01/07

SCALE: 1"=20'

FILE NAME: 2143101-023

SHEET: C-9

DELUCA-HOFFMAN ASSOCIATES, INC. 5001 PORTLAND, ME 04106

DRY: 11/01/07

DESIGNED: 11/01/07

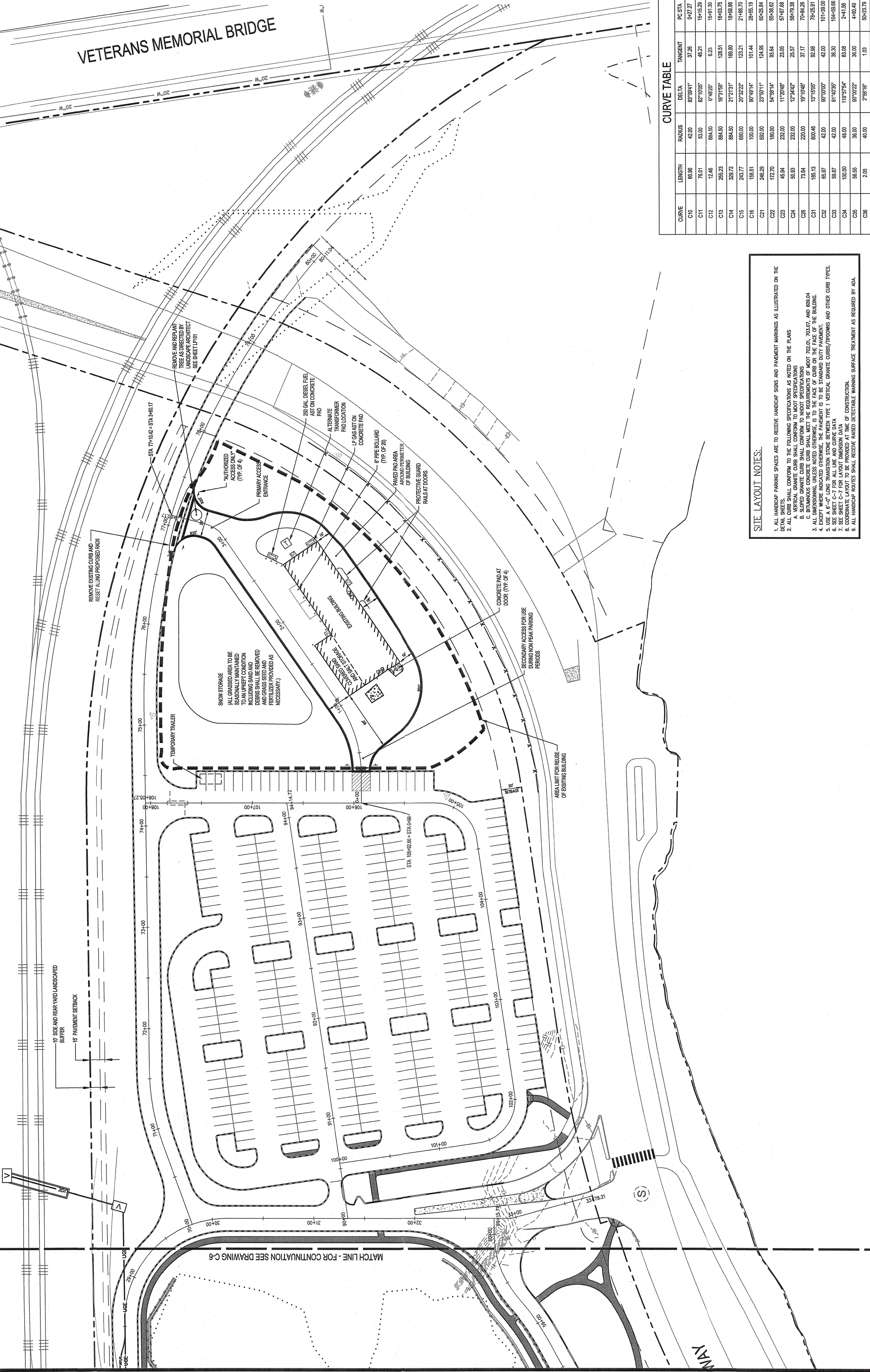
SCALE: 1"=20'

FILE NAME: 2143101-023

SHEET: C-9

REVISIONS

REV	DATE	DESCRIPTION
1	11/01/07	DATE OF DEVELOPMENT FROM SUBMISSION
2	11/01/07	DATE OF DEVELOPMENT FROM SUBMISSION
3	11/01/07	DATE OF DEVELOPMENT FROM SUBMISSION
4	11/01/07	DATE OF DEVELOPMENT FROM SUBMISSION
5	11/01/07	DATE OF DEVELOPMENT FROM SUBMISSION
6	11/01/07	DATE OF DEVELOPMENT FROM SUBMISSION
7	11/01/07	DATE OF DEVELOPMENT FROM SUBMISSION
8	11/01/07	DATE OF DEVELOPMENT FROM SUBMISSION
9	11/01/07	DATE OF DEVELOPMENT FROM SUBMISSION
10	11/01/07	DATE OF DEVELOPMENT FROM SUBMISSION
11	11/01/07	DATE OF DEVELOPMENT FROM SUBMISSION
12	11/01/07	DATE OF DEVELOPMENT FROM SUBMISSION
13	11/01/07	DATE OF DEVELOPMENT FROM SUBMISSION
14	11/01/07	DATE OF DEVELOPMENT FROM SUBMISSION
15	11/01/07	DATE OF DEVELOPMENT FROM SUBMISSION
16	11/01/07	DATE OF DEVELOPMENT FROM SUBMISSION
17	11/01/07	DATE OF DEVELOPMENT FROM SUBMISSION
18	11/01/07	DATE OF DEVELOPMENT FROM SUBMISSION
19	11/01/07	DATE OF DEVELOPMENT FROM SUBMISSION
20	11/01/07	DATE OF DEVELOPMENT FROM SUBMISSION
21	11/01/07	DATE OF DEVELOPMENT FROM SUBMISSION
22	11/01/07	DATE OF DEVELOPMENT FROM SUBMISSION
23	11/01/07	DATE OF DEVELOPMENT FROM SUBMISSION
24	11/01/07	DATE OF DEVELOPMENT FROM SUBMISSION
25	11/01/07	DATE OF DEVELOPMENT FROM SUBMISSION
26	11/01/07	DATE OF DEVELOPMENT FROM SUBMISSION
27	11/01/07	DATE OF DEVELOPMENT FROM SUBMISSION
28	11/01/07	DATE OF DEVELOPMENT FROM SUBMISSION
29	11/01/07	DATE OF DEVELOPMENT FROM SUBMISSION
30	11/01/07	DATE OF DEVELOPMENT FROM SUBMISSION
31	11/01/07	DATE OF DEVELOPMENT FROM SUBMISSION
32	11/01/07	DATE OF DEVELOPMENT FROM SUBMISSION
33	11/01/07	DATE OF DEVELOPMENT FROM SUBMISSION
34	11/01/07	DATE OF DEVELOPMENT FROM SUBMISSION
35	11/01/07	DATE OF DEVELOPMENT FROM SUBMISSION
36	11/01/07	DATE OF DEVELOPMENT FROM SUBMISSION
37	11/01/07	DATE OF DEVELOPMENT FROM SUBMISSION
38	11/01/07	DATE OF DEVELOPMENT FROM SUBMISSION
39	11/01/07	DATE OF DEVELOPMENT FROM SUBMISSION
40	11/01/07	DATE OF DEVELOPMENT FROM SUBMISSION
41	11/01/07	DATE OF DEVELOPMENT FROM SUBMISSION
42	11/01/07	DATE OF DEVELOPMENT FROM SUBMISSION
43	11/01/07	DATE OF DEVELOPMENT FROM SUBMISSION
44	11/01/07	DATE OF DEVELOPMENT FROM SUBMISSION
45	11/01/07	DATE OF DEVELOPMENT FROM SUBMISSION
46	11/01/07	DATE OF DEVELOPMENT FROM SUBMISSION
47	11/01/07	DATE OF DEVELOPMENT FROM SUBMISSION
48	11/01/07	DATE OF DEVELOPMENT FROM SUBMISSION
49	11/01/07	DATE OF DEVELOPMENT FROM SUBMISSION
50	11/01/07	DATE OF DEVELOPMENT FROM SUBMISSION
51	11/01/07	DATE OF DEVELOPMENT FROM SUBMISSION
52	11/01/07	DATE OF DEVELOPMENT FROM SUBMISSION
53	11/01/07	DATE OF DEVELOPMENT FROM SUBMISSION
54	11/01/07	DATE OF DEVELOPMENT FROM SUBMISSION
55	11/01/07	DATE OF DEVELOPMENT FROM SUBMISSION
56	11/01/07	DATE OF DEVELOPMENT FROM SUBMISSION
57	11/01/07	DATE OF DEVELOPMENT FROM SUBMISSION
58	11/01/07	DATE OF DEVELOPMENT FROM SUBMISSION
59	11/01/07	DATE OF DEVELOPMENT FROM SUBMISSION
60	11/01/07	DATE OF DEVELOPMENT FROM SUBMISSION
61	11/01/07	DATE OF DEVELOPMENT FROM SUBMISSION
62	11/01/07	DATE OF DEVELOPMENT FROM SUBMISSION
63	11/01/07	DATE OF DEVELOPMENT FROM SUBMISSION
64	11/01/07	DATE OF DEVELOPMENT FROM SUBMISSION
65	11/01/07	DATE OF DEVELOPMENT FROM SUBMISSION
66	11/01/07	DATE OF DEVELOPMENT FROM SUBMISSION
67	11/01/07	DATE OF DEVELOPMENT FROM SUBMISSION
68	11/01/07	DATE OF DEVELOPMENT FROM SUBMISSION
69	11/01/07	DATE OF DEVELOPMENT FROM SUBMISSION
70	11/01/07	DATE OF DEVELOPMENT FROM SUBMISSION
71	11/01/07	DATE OF DEVELOPMENT FROM SUBMISSION
72	11/01/07	DATE OF DEVELOPMENT FROM SUBMISSION
73	11/01/07	DATE OF DEVELOPMENT FROM SUBMISSION
74	11/01/07	DATE OF DEVELOPMENT FROM SUBMISSION
75	11/01/07	DATE OF DEVELOPMENT FROM SUBMISSION
76	11/01/07	DATE OF DEVELOPMENT FROM SUBMISSION
77	11/01/07	DATE OF DEVELOPMENT FROM SUBMISSION
78	11/01/07	DATE OF DEVELOPMENT FROM SUBMISSION
79	11/01/07	DATE OF DEVELOPMENT FROM SUBMISSION
80	11/01/07	DATE OF DEVELOPMENT FROM SUBMISSION
81	11/01/07	DATE OF DEVELOPMENT FROM SUBMISSION
82	11/01/07	DATE OF DEVELOPMENT FROM SUBMISSION
83	11/01/07	DATE OF DEVELOPMENT FROM SUBMISSION
84	11/01/07	DATE OF DEVELOPMENT FROM SUBMISSION
85	11/01/07	DATE OF DEVELOPMENT FROM SUBMISSION
86	11/01/07	DATE OF DEVELOPMENT FROM SUBMISSION
87	11/01/07	DATE OF DEVELOPMENT FROM SUBMISSION
88	11/01/07	DATE OF DEVELOPMENT FROM SUBMISSION
89	11/01/07	DATE OF DEVELOPMENT FROM SUBMISSION
90	11/01/07	DATE OF DEVELOPMENT FROM SUBMISSION
91	11/01/07	DATE OF DEVELOPMENT FROM SUBMISSION
92	11/01/07	DATE OF DEVELOPMENT FROM SUBMISSION
93	11/01/07	DATE OF DEVELOPMENT FROM SUBMISSION
94	11/01/07	DATE OF DEVELOPMENT FROM SUBMISSION
95	11/01/07	DATE OF DEVELOPMENT FROM SUBMISSION
96	11/01/07	DATE OF DEVELOPMENT FROM SUBMISSION
97	11/01/07	DATE OF DEVELOPMENT FROM SUBMISSION
98	11/01/07	DATE OF DEVELOPMENT FROM SUBMISSION
99	11/01/07	DATE OF DEVELOPMENT FROM SUBMISSION
100	11/01/07	DATE OF DEVELOPMENT FROM SUBMISSION



**LINE TABLE**

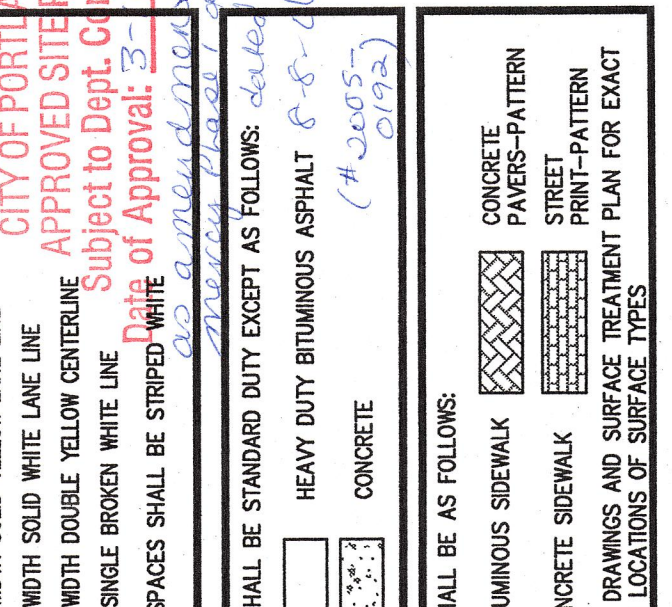
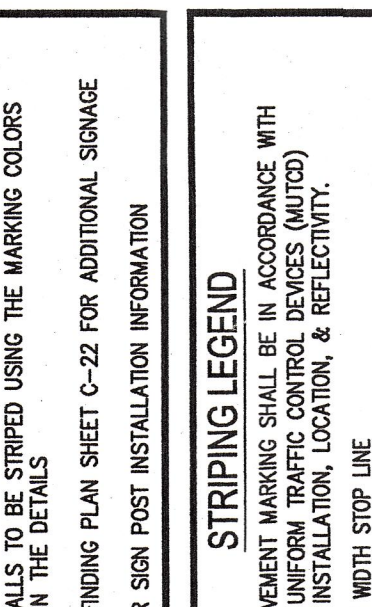
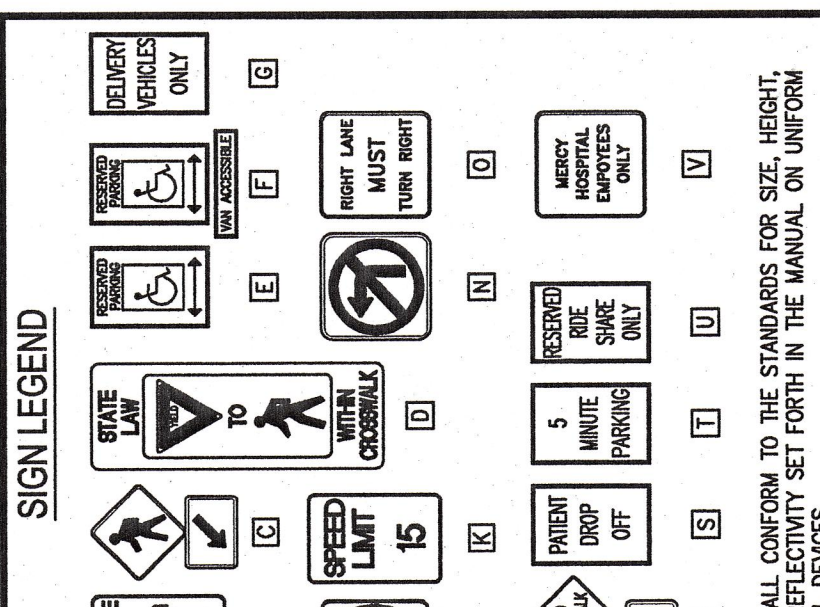
LINE	LENGTH	BEARING
L14	27.27	S84°44'30"W
L15	615.29	S27°42'25"W
L17	422.72	N74°49'14"W
L18	282.09	S87°00'00"W
L19	82.43	S84°17'23"W
L21	231.00	S27°42'25"W
L22	105.49	S27°42'25"W
L23	166.43	N27°54'14"W
L24	214.83	S87°13'25"E
L25	648.83	N27°42'25"W
L27	285.50	N27°42'25"W
L28	75.37	N27°11'49"W
L29	45.75	S19°00'00"W
L30	11.85	S19°00'00"W
L31	84.26	N27°42'25"W
L32	56.71	N27°42'25"W
L33	44.72	S17°02'25"W
L34	13.00	S17°02'25"W
L35	254.89	S17°02'25"W
L36	285.14	N27°42'25"W
L37	23.79	N27°42'25"E

**LINE TABLE**

LINE	LENGTH	BEARING
L1	31.50	S200°00'00"E
L2	10.00	S200°00'00"E
L3	10.00	S200°00'00"E
L4	10.00	S200°00'00"E
L5	10.00	S200°00'00"E
L6	10.00	S200°00'00"E
L7	10.00	S200°00'00"E
L8	10.00	S200°00'00"E
L9	10.00	S200°00'00"E
L10	10.00	S200°00'00"E
L11	10.00	S200°00'00"E
L12	10.00	S200°00'00"E
L13	10.00	S200°00'00"E
L14	10.00	S200°00'00"E
L15	10.00	S200°00'00"E
L16	10.00	S200°00'00"E
L17	10.00	S200°00'00"E
L18	10.00	S200°00'00"E
L19	10.00	S200°00'00"E
L20	10.00	S200°00'00"E
L21	10.00	S200°00'00"E
L22	10.00	S200°00'00"E
L23	10.00	S200°00'00"E
L24	10.00	S200°00'00"E
L25	10.00	S200°00'00"E
L26	10.00	S200°00'00"E
L27	10.00	S200°00'00"E
L28	10.00	S200°00'00"E
L29	10.00	S200°00'00"E
L30	10.00	S200°00'00"E
L31	10.00	S200°00'00"E
L32	10.00	S200°00'00"E
L33	10.00	S200°00'00"E
L34	10.00	S200°00'00"E
L35	10.00	S200°00'00"E
L36	10.00	S200°00'00"E
L37	10.00	S200°00'00"E
L38	10.00	S200°00'00"E
L39	10.00	S200°00'00"E
L40	10.00	S200°00'00"E
L41	10.00	S200°00'00"E
L42	10.00	S200°00'00"E
L43	10.00	S200°00'00"E
L44	10.00	S200°00'00"E
L45	10.00	S200°00'00"E
L46	10.00	S200°00'00"E
L47	10.00	S200°00'00"E
L48	10.00	S200°00'00"E
L49	10.00	S200°00'00"E
L50	10.00	S200°00'00"E
L51	10.00	S200°00'00"E
L52	10.00	S200°00'00"E
L53	10.00	S200°00'00"E
L54	10.00	S200°00'00"E
L55	10.00	S200°00'00"E
L56	10.00	S200°00'00"E
L57	10.00	S200°00'00"E
L58	10.00	S200°00'00"E
L59	10.00	S200°00'00"E
L60	10.00	S200°00'00"E
L61	10.00	S200°00'00"E
L62	10.00	S200°00'00"E
L63	10.00	S200°00'00"E
L64	10.00	S200°00'00"E
L65	10.00	S200°00'00"E
L66	10.00	S200°00'00"E
L67	10.00	S200°00'00"E
L68	10.00	S200°00'00"E
L69	10.00	S200°00'00"E
L70	10.00	S200°00'00"E
L71	10.00	S200°00'00"E
L72	10.00	S200°00'00"E
L73	10.00	S200°00'00"E
L74	10.00	S200°00'00"E
L75	10.00	S200°00'00"E
L76	10.00	S200°00'00"E
L77	10.00	S200°00'00"E
L78	10.00	S200°00'00"E
L79	10.00	S200°00'00"E
L80	10.00	S200°00'00"E
L81	10.00	S200°00'00"E
L82	10.00	S200°00'00"E
L83	10.00	S200°00'00"E
L84	10.00	S200°00'00"E
L85	10.00	S200°00'00"E
L86	10.00	S200°00'00"E
L87	10.00	S200°00'00"E
L88	10.00	S200°00'00"E
L89	10.00	S200°00'00"E
L90	10.00	S200°00'00"E
L91	10.00	S200°00'00"E
L92	10.00	S200°00'00"E
L93	10.00	S200°00'00"E
L94	10.00	S200°00'00"E
L95	10.00	S200°00'00"E
L96	10.00	S200°00'00"E
L97	10.00	S200°00'00"E
L98	10.00	S200°00'00"E
L99	10.00	S200°00'00"E
L100	10.00	S200°00'00"E

**CURVE TABLE**

CURVE	LENGTH	RADIUS	DELTA	PC/STA	PT/STA
C01	69.96	42.00	89°34'47"	72.25	104.21
C11	13.46	84.00	6°42'25"	104.21	104.35
C13	253.33	84.00	91°37'50"	104.35	145.68
C14	333.72	84.00	217°13'17"	104.35	248.07
C15	263.77	65.00	202°22'22"	104.35	248.07
C16	158.51	100.00	89°49'14"	104.44	263.59
C21	246.29	62.00	259°31'11"	104.45	304.73
C22	172.70	180.00	54°58'34"	63.64	59.92
C23	45.84	232.00	17°24'47"	23.67	59.92
C24	53.93	232.00	17°24'47"	59.92	79.82
C25	73.64	232.00	17°24'47"	59.92	79.82
C26	185.13	800.46	19°19'57"	62.38	79.25
C27	63.37	42.00	97°00'00"	42.00	101.00
C28	59.87	42.00	81°42'25"	83.30	104.00
C29	100.50	48.00	118°37'54"	83.30	241.58
C30	58.55	38.00	89°02'22"	38.00	342.08
C31	2.05	40.00	2°59'39"	1.03	50.03
C32	71.77	100.00	41°17'19"	71.77	59.03
C33	308.29	620.00	29°34'39"	197.59	794.81



**CURVE TABLE**

CURVE	LENGTH	RADIUS	DELTA	PC/STA	PT/STA
C01	69.96	42.00	89°34'47"	72.25	104.21
C11	13.46	84.00	6°42'25"	104.21	104.35
C13	253.33	84.00	91°37'50"	104.35	145.68
C14	333.72	84.00	217°13'17"	104.35	248.07
C15	263.77	65.00	202°22'22"	104.35	248.07
C16	158.51	100.00	89°49'14"	104.44	263.59
C21	246.29	62.00	259°31'11"	104.45	304.73
C22	172.70	180.00	54°58'34"	63.64	59.92
C23	45.84	232.00	17°24'47"	23.67	59.92
C24	53.93	232.00	17°24'47"	59.92	79.82
C25	73.64	232.00	17°24'47"	59.92	79.25
C26	185.13	800.46	19°19'57"	62.38	79.25
C27	63.37	42.00	97°00'00"	42.00	101.00
C28	59.87	42.00	81°42'25"	83.30	104.00
C29	100.50	48.00	118°37'54"	83.30	241.58
C30	58.55	38.00	89°02'22"	38.00	342.08
C31	2.05	40.00	2°59'39"	1.03	50.03
C32	71.77	100.00	41°17'19"	71.77	59.03
C33	308.29	620.00	29°34'39"	197.59	794.81

**SITE LAYOUT NOTES:**

- ALL HANDICAP PARKING SPACES ARE TO RECEIVE HANDICAP SIGNS AND PAVEMENT MARKINGS AS ILLUSTRATED ON THE DETAIL SHEETS.
- ALL CURBS SHALL CONFORM TO THE FOLLOWING SPECIFICATIONS AS NOTED ON THE PLANS:  
A. 3" HIGH GRANITE CURB SHALL CONFORM TO MOST SPECIFICATIONS.  
B. 3" HIGH GRANITE CURB SHALL CONFORM TO MOST SPECIFICATIONS.  
C. 3" HIGH GRANITE CURB SHALL CONFORM TO MOST SPECIFICATIONS.
- ALL DIMENSIONS UNLESS NOTED OTHERWISE, IS TO THE FACE OF CURB OR FACE OF THE BUILDING.
- EXCEPT WHERE INDICATED OTHERWISE, THE PAVEMENT IS TO BE SWAMP DUTY PAVEMENT.
- SEE SHEET C-7 FOR ALL LINE AND CURVE DATA.
- CONCRETE FINISHES TO BE INDICATED AT TIME OF CONSTRUCTION.
- CONCRETE FINISHES TO BE INDICATED AT TIME OF CONSTRUCTION.
- ALL HANDICAP SPACES SHALL RECEIVE PAVED DETECTABLE WARNING SURFACE TREATMENT AS REQUIRED BY ADA.

**REVISIONS**

REV	DATE	DESCRIPTION
1	11/01/01	PRELIMINARY SITE PLAN APPROVAL TO CITY OF PORTLAND
2	11/01/01	PRELIMINARY SITE PLAN APPROVAL TO CITY OF PORTLAND
3	11/01/01	PRELIMINARY SITE PLAN APPROVAL TO CITY OF PORTLAND
4	11/01/01	PRELIMINARY SITE PLAN APPROVAL TO CITY OF PORTLAND
5	11/01/01	PRELIMINARY SITE PLAN APPROVAL TO CITY OF PORTLAND
6	11/01/01	PRELIMINARY SITE PLAN APPROVAL TO CITY OF PORTLAND
7	11/01/01	PRELIMINARY SITE PLAN APPROVAL TO CITY OF PORTLAND
8	11/01/01	PRELIMINARY SITE PLAN APPROVAL TO CITY OF PORTLAND
9	11/01/01	PRELIMINARY SITE PLAN APPROVAL TO CITY OF PORTLAND
10	11/01/01	PRELIMINARY SITE PLAN APPROVAL TO CITY OF PORTLAND

**PROJECT**  
MERCY AT THE FORE

**SHEET TITLE**  
SITE LAYOUT PLAN - SOUTH

**CLIENT**  
MERCY HOSPITAL

**DESIGNED BY**  
D. HOFFMAN

**DRAWN BY**  
D. HOFFMAN

**CHECKED BY**  
D. HOFFMAN

**DATE**  
11.01.01

**SCALE**  
1" = 40'

**FILE NAME**  
2145101 - MFC

**REVISIONS**

REV	DATE	DESCRIPTION
1	11/01/01	PRELIMINARY SITE PLAN APPROVAL TO CITY OF PORTLAND
2	11/01/01	PRELIMINARY SITE PLAN APPROVAL TO CITY OF PORTLAND
3	11/01/01	PRELIMINARY SITE PLAN APPROVAL TO CITY OF PORTLAND
4	11/01/01	PRELIMINARY SITE PLAN APPROVAL TO CITY OF PORTLAND
5	11/01/01	PRELIMINARY SITE PLAN APPROVAL TO CITY OF PORTLAND
6	11/01/01	PRELIMINARY SITE PLAN APPROVAL TO CITY OF PORTLAND
7	11/01/01	PRELIMINARY SITE PLAN APPROVAL TO CITY OF PORTLAND
8	11/01/01	PRELIMINARY SITE PLAN APPROVAL TO CITY OF PORTLAND
9	11/01/01	PRELIMINARY SITE PLAN APPROVAL TO CITY OF PORTLAND
10	11/01/01	PRELIMINARY SITE PLAN APPROVAL TO CITY OF PORTLAND

**REVISIONS**

REV	DATE	DESCRIPTION
1	11/01/01	PRELIMINARY SITE PLAN APPROVAL TO CITY OF PORTLAND
2	11/01/01	PRELIMINARY SITE PLAN APPROVAL TO CITY OF PORTLAND
3	11/01/01	PRELIMINARY SITE PLAN APPROVAL TO CITY OF PORTLAND
4	11/01/01	PRELIMINARY SITE PLAN APPROVAL TO CITY OF PORTLAND
5	11/01/01	PRELIMINARY SITE PLAN APPROVAL TO CITY OF PORTLAND
6	11/01/01	PRELIMINARY SITE PLAN APPROVAL TO CITY OF PORTLAND
7	11/01/01	PRELIMINARY SITE PLAN APPROVAL TO CITY OF PORTLAND
8	11/01/01	PRELIMINARY SITE PLAN APPROVAL TO CITY OF PORTLAND
9	11/01/01	PRELIMINARY SITE PLAN APPROVAL TO CITY OF PORTLAND
10	11/01/01	PRELIMINARY SITE PLAN APPROVAL TO CITY OF PORTLAND

**REVISIONS**

REV	DATE	DESCRIPTION
1	11/01/01	PRELIMINARY SITE PLAN APPROVAL TO CITY OF PORTLAND
2	11/01/01	PRELIMINARY SITE PLAN APPROVAL TO CITY OF PORTLAND
3	11/01/01	PRELIMINARY SITE PLAN APPROVAL TO CITY OF PORTLAND
4	11/01/01	PRELIMINARY SITE PLAN APPROVAL TO CITY OF PORTLAND
5	11/01/01	PRELIMINARY SITE PLAN APPROVAL TO CITY OF PORTLAND
6	11/01/01	PRELIMINARY SITE PLAN APPROVAL TO CITY OF PORTLAND
7	11/01/01	PRELIMINARY SITE PLAN APPROVAL TO CITY OF PORTLAND
8	11/01/01	PRELIMINARY SITE PLAN APPROVAL TO CITY OF PORTLAND
9	11/01/01	PRELIMINARY SITE PLAN APPROVAL TO CITY OF PORTLAND
10	11/01/01	PRELIMINARY SITE PLAN APPROVAL TO CITY OF PORTLAND

**REVISIONS**

REV	DATE	DESCRIPTION
1	11/01/01	PRELIMINARY SITE PLAN APPROVAL TO CITY OF PORTLAND
2	11/01/01	PRELIMINARY SITE PLAN APPROVAL TO CITY OF PORTLAND
3	11/01/01	PRELIMINARY SITE PLAN APPROVAL TO CITY OF PORTLAND
4	11/01/01	PRELIMINARY SITE PLAN APPROVAL TO CITY OF PORTLAND
5	11/01/01	PRELIMINARY SITE PLAN APPROVAL TO CITY OF PORTLAND
6	11/01/01	PRELIMINARY SITE PLAN APPROVAL TO CITY OF PORTLAND
7	11/01/01	PRELIMINARY SITE PLAN APPROVAL TO CITY OF PORTLAND
8	11/01/01	PRELIMINARY SITE PLAN APPROVAL TO CITY OF PORTLAND
9	11/01/01	PRELIMINARY SITE PLAN APPROVAL TO CITY OF PORTLAND
10	11/01/01	PRELIMINARY SITE PLAN APPROVAL TO CITY OF PORTLAND

**REVISIONS**

REV	DATE	DESCRIPTION
1	11/01/01	PRELIMINARY SITE PLAN APPROVAL TO CITY OF PORTLAND
2	11/01/01	PRELIMINARY SITE PLAN APPROVAL TO CITY OF PORTLAND
3	11/01/01	PRELIMINARY SITE PLAN APPROVAL TO CITY OF PORTLAND
4	11/01/01	PRELIMINARY SITE PLAN APPROVAL TO CITY OF PORTLAND
5	11/01/01	PRELIMINARY SITE PLAN APPROVAL TO CITY OF PORTLAND
6	11/01/01	PRELIMINARY SITE PLAN APPROVAL TO CITY OF PORTLAND
7	11/01/01	PRELIMINARY SITE PLAN APPROVAL TO CITY OF PORTLAND
8	11/01/01	PRELIMINARY SITE PLAN APPROVAL TO CITY OF PORTLAND
9	11/01/01	PRELIMINARY SITE PLAN APPROVAL TO CITY OF PORTLAND
10	11/01/01	PRELIMINARY SITE PLAN APPROVAL TO CITY OF PORTLAND

**REVISIONS**

REV	DATE	DESCRIPTION
1	11/01/01	PRELIMINARY SITE PLAN APPROVAL TO CITY OF PORTLAND
2	11/01/01	PRELIMINARY SITE PLAN APPROVAL TO CITY OF PORTLAND
3	11/01/01	PRELIMINARY SITE PLAN APPROVAL TO CITY OF PORTLAND
4	11/01/01	PRELIMINARY SITE PLAN APPROVAL TO CITY OF PORTLAND
5	11/01/01	PRELIMINARY SITE PLAN APPROVAL TO CITY OF PORTLAND
6	11/01/01	PRELIMINARY SITE PLAN APPROVAL TO CITY OF PORTLAND
7	11/01/01	PRELIMINARY SITE PLAN APPROVAL TO CITY OF PORTLAND
8	11/01/01	PRELIMINARY SITE PLAN APPROVAL TO CITY OF PORTLAND
9	11/01/01	PRELIMINARY SITE PLAN APPROVAL TO CITY OF PORTLAND
10	11/01/01	PRELIMINARY SITE PLAN APPROVAL TO CITY OF PORTLAND

**REVISIONS**

REV	DATE	DESCRIPTION
1	11/01/01	PRELIMINARY SITE PLAN APPROVAL TO CITY OF PORTLAND
2	11/01/01	PRELIMINARY SITE PLAN APPROVAL TO CITY OF PORTLAND
3	11/01/01	PRELIMINARY SITE PLAN APPROVAL TO CITY OF PORTLAND
4	11/01/01	PRELIMINARY SITE PLAN APPROVAL TO CITY OF PORTLAND
5	11/01/01	PRELIMINARY SITE PLAN APPROVAL TO CITY OF PORTLAND
6	11/01/01	PRELIMINARY SITE PLAN APPROVAL TO CITY OF PORTLAND
7	11/01/01	PRELIMINARY SITE PLAN APPRO

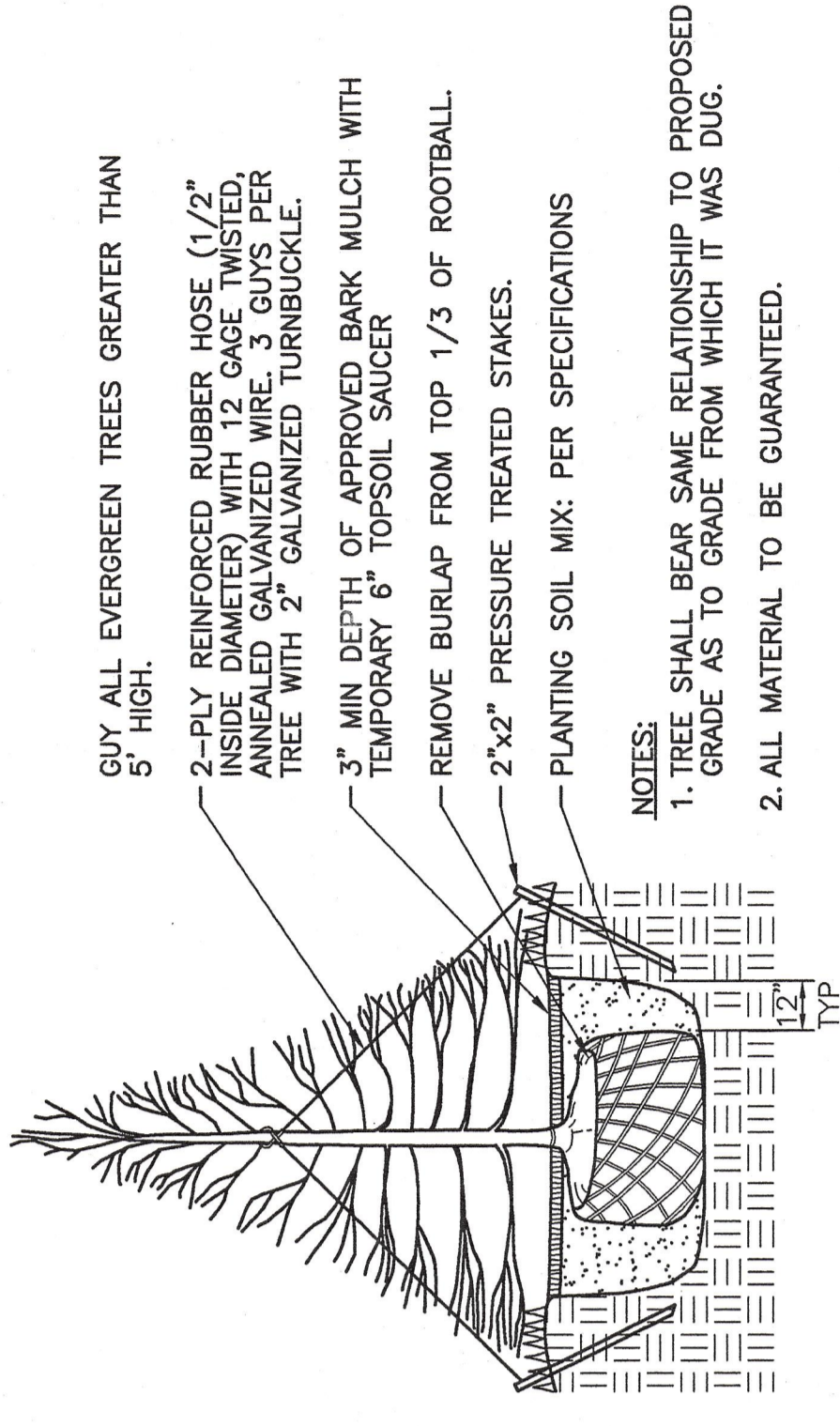
**PLANTING NOTES:**

1. THE LANDSCAPE CONTRACTOR SHALL SUPPLY AND INSTALL ALL PLANTS AND MATERIALS TO COMPLETE THE WORK. DISCREPANCIES BETWEEN QUANTITIES SHOWN ON THE DRAWINGS AND THE PLANT LIST SHALL BE REPORTED IMMEDIATELY TO THE ARCHITECT AND SHALL NOT ENTITLE THE CONTRACTOR TO ADDITIONAL REMUNERATION.
2. THE LANDSCAPE CONTRACTOR IS ADVISED THAT BELOW GROUND UTILITIES EXIST ON SITE, THE LOCATIONS OF WHICH SHALL BE DETERMINED BY THE CONTRACTOR PRIOR TO THE START OF WORK. THE CONTRACTOR SHALL BE RESPONSIBLE FOR ANY PROPOSED PLANTING CONFLICT WITH ANY UTILITY. THE ARCHITECT SHALL BE NOTIFIED IMMEDIATELY FOR DECISION.
3. ANY AND ALL PAVING, CURBING, UTILITIES, LAWNS, ETC., DAMAGED AS A RESULT OF THE LANDSCAPE CONTRACTOR'S OPERATIONS SHALL BE REPLACED OR REPAIRED BY THE CONTRACTOR AT NO ADDITIONAL COST TO THE OWNER.
4. ALL PLANTING BEDS INCLUDING TREE AND SHRUB PITS AS INDICATED SHALL RECEIVE 3" APPROVED CLEAN UNIFORM GROUND OR SHREDDED PINE OR HEMLOCK BARK MULCH.
5. LOCATIONS OF PROPOSED PLANTINGS AND BED LINES SHALL BE REVIEWED BY THE ARCHITECT PRIOR TO INSTALLATION.
6. THE LANDSCAPE CONTRACTOR SHALL RELOCATE ANY PLANT ACCORDING TO THE DIRECTION OF THE ARCHITECT.
7. ALL PLANT MATERIALS CALLED FOR AND INSTALLED SHALL MEET OR EXCEED SPECIFICATIONS OF THE "AMERICAN STANDARDS FOR NURSERY STOCK" (LATEST EDITION) AS SET FORTH BY THE AMERICAN ASSOCIATION OF NURSERYMEN.
8. ALL PLANTING BEDS SHALL BE DEFINED BY A NEAT SHOVEL-CUT BED LINE. BED LINES SHALL BE TRUE TO FORM AS SHOWN ON THE DRAWINGS, CONSISTING OF SMOOTH CURVES AND SHARP LINES AND CORNERS.
9. IF, BECAUSE OF CULTURE REQUIREMENTS, AVAILABILITY, OR OTHER CIRCUMSTANCES, THE LANDSCAPE CONTRACTOR BELIEVES A PARTICULAR PLANT CALLED FOR IS INAPPROPRIATE, THE LANDSCAPE CONTRACTOR SHALL REPORT THE SITUATION IMMEDIATELY TO THE ARCHITECT FOR DECISION.
10. ALL DISTURBED AREAS NOT OTHERWISE COVERED SHALL RECEIVE 6" LOAM AND SEED.

MARK	SCIENTIFIC NAME / COMMON NAME	SIZE CAL.	SIZE HT.	ROOT	REMARKS
FP	Fraxinus pennsylvanica/Green Ash	3"	—	B&B	Full
PA	—	—	6'-8'	B&B	—
PS	Pinus strobus/White Pine	—	6'-8'	B&B	—
TOT	Thuja occidentalis 'Techny'/Arborvitae	—	5'-6'	B&B	—

**L11 PLANT LIST**

NTS LP101



- GUY ALL EVERGREEN TREES GREATER THAN 5' HIGH.
- 2-PLY REINFORCED RUBBER HOSE (1/2" INSIDE DIAMETER) WITH 12 GAGE TWISTED ANNEALED GALVANIZED WIRE. 3 GUYS PER TREE WITH 2" GALVANIZED TURNBUCKLE.
- 3" MIN. DEPTH OF APPROVED BARK MULCH WITH TEMPORARY 6" TOPSOIL SAUCER
- REMOVE BURLAP FROM TOP 1/3 OF ROOTBALL.
- 2"x2" PRESSURE TREATED STAKES.
- PLANTING SOIL MIX: PER SPECIFICATIONS

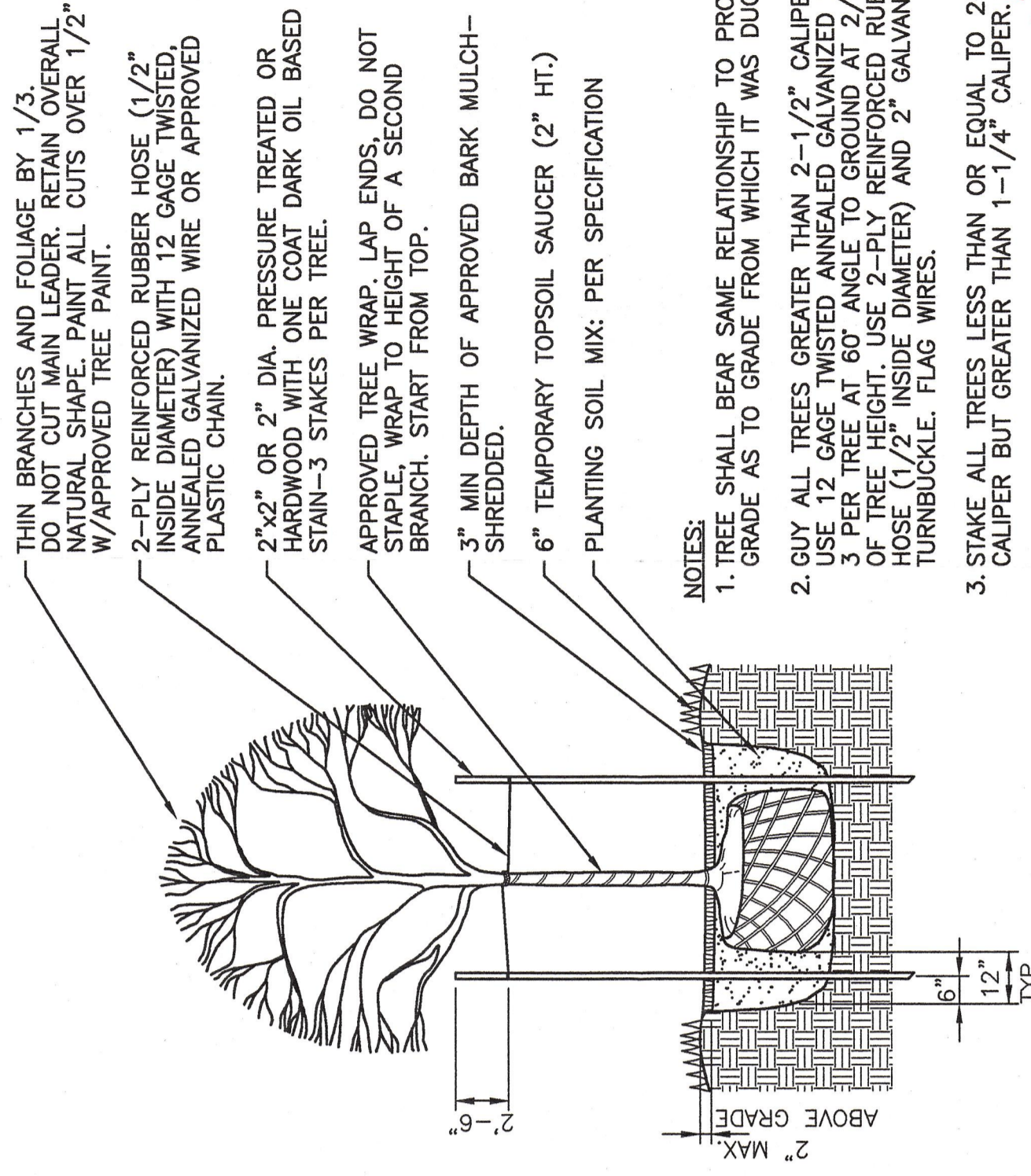
- NOTES:**
1. TREES SHALL BEAR SAME RELATIONSHIP TO PROPOSED 1" GRADE AS TO GRADE FROM WHICH IT WAS DUG.
  2. ALL MATERIAL TO BE GUARANTEED.

**G7 PLANTING NOTES**

NTS LP101

**G11 TYPICAL EVERGREEN TREE PLANTING DETAIL**

NTS LP101



- THIN BRANCHES AND FOLIAGE BY 1/3. MAIN LEADER: RETAIN. BRANCHES: REMOVE. ALL CUTS OVER 1/2" W/APPROVED TREE PAINT.
- 2-PLY REINFORCED RUBBER HOSE (1/2" INSIDE DIAMETER) WITH 12 GAGE TWISTED ANNEALED GALVANIZED WIRE OR APPROVED PLASTIC CHAIN.
- 2"x2" OR 2" DIA. PRESSURE TREATED OR HARDWOOD WITH ONE COAT DARK OIL BASED STAIN-3 STAKES PER TREE.
- APPROVED TREE WRAP. LAP ENDS, DO NOT SPIN. WRAP TO HEIGHT OF A SECOND BRANCH. START FROM TOP.
- 3" MIN. DEPTH OF APPROVED BARK MULCH-SHREDDED.
- 6" TEMPORARY TOPSOIL SAUCER (2" HT.)
- PLANTING SOIL MIX: PER SPECIFICATION

- NOTES:**
1. TREE SHALL BEAR SAME RELATIONSHIP TO PROPOSED 1" GRADE AS TO GRADE FROM WHICH IT WAS DUG.
  2. GUY ALL TREES GREATER THAN 2-1/2" CALIPER. 1/2 GAGE TWISTED ANNEALED GALVANIZED WIRE. 3 GUYS PER TREE WITH 2" GALVANIZED TURNBUCKLE. HOSE (1/2" INSIDE DIAMETER) AND 2" GALVANIZED TURNBUCKLE. FLAG WIRES.
  3. STAKE ALL TREES LESS THAN OR EQUAL TO 2-1/2" OF PORTLAND CALIPER BUT GREATER THAN 1-1/4" CALIPER. APPROVED SITE PLAN Subject to Dept. Conditions Date of Approval: 3-11-08 (4 2008-0003) recommended to Mercy Health approved dated 8-8-06 H 2008-08R
  4. ALL MATERIAL TO BE GUARANTEED.

**A11 TYPICAL DECIDUOUS TREE PLANTING DETAIL**

NTS LP101

144 Fore Street / P.O. Box 618  
 Portland, Maine 04104  
 Tel: (207) 772-3846  
 Fax: (207) 772-1070  
 www.smrtinc.com

ARCHITECTURE  
 ENGINEERING  
 PLANNING  
 INTERIOR DESIGN  
 COMMISSIONING

**SMRT**

LICENSED LANDSCAPE ARCHITECT  
 MARK G. JOHNSON  
 NO. 1857

ISSUED FOR CONSTRUCTION  
 5-1-08

MERCY HEALTH SYSTEM - FORE RIVER CAMPUS  
 STORAGE BUILDING RENOVATION  
 PORTLAND, MAINE

CURRENT ISSUE STATUS:  
 DATE: 5-1-08  
 DESCRIPTION: ISSUED FOR CONSTRUCTION

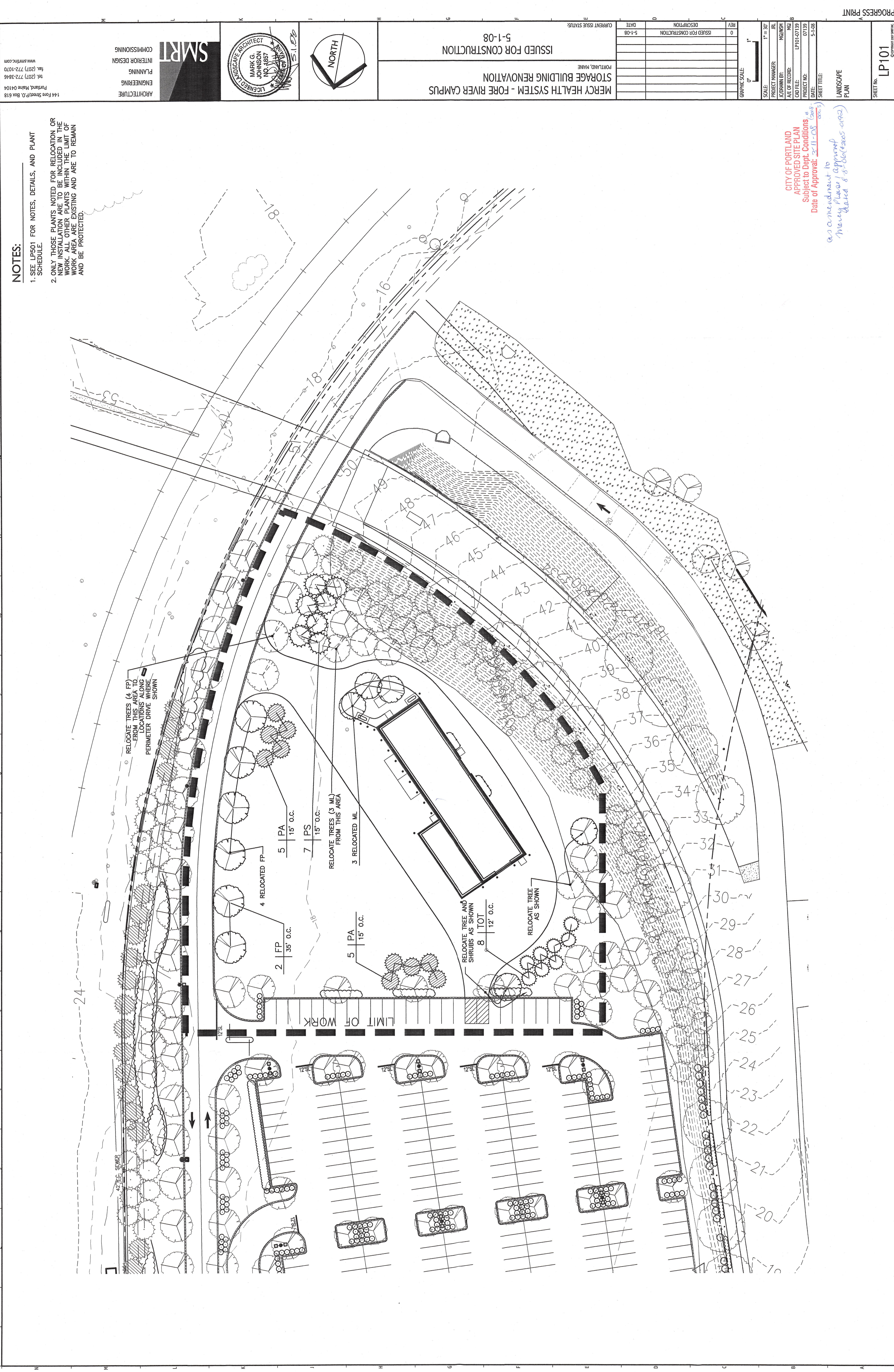
GRAPHIC SCALE: 0" = 1'

SCALE: AS SHOWN

PROJECT MANAGER: JRL  
 JOURNALIST: MJS/RSK  
 DATE OF RECORD: MJB  
 CODE FILE: LP501-07139  
 PROJECT NO.: 07139  
 DATE: 5-1-08  
 SHEET TITLE: LANDSCAPE DETAILS

SHEET No. **LP501**  
 CONTRACTOR: MARY HEALTH

PROGRESS PRINT



**NOTES:**

1. SEE LPS01 FOR NOTES, DETAILS, AND PLANT SCHEDULE.
2. ONLY THOSE PLANTS NOTED FOR RELOCATION OR ONLY THOSE PLANTS NOTED FOR REMOVAL TO BE INCLUDED IN THE WORK. ALL OTHER PLANTS WITHIN THE LIMIT OF WORK AREA ARE EXISTING AND ARE TO REMAIN AND BE PROTECTED.

CITY OF PORTLAND  
 APPROVED SITE PLAN  
 Subject to Dept. Conditions  
 Date of Approval: 3/11/08  
 geotechnical to  
 Mercy Plaza / Approval  
 dated 8/16/06 (Kearns 0102)

 ARCHITECTURE ENGINEERING PLANNING INTERIOR DESIGN COMMISSIONING 144 Fore Street, P.O. Box 618 Portland, Maine 04104 Tel: (207) 772-2846 Fax: (207) 772-1070 www.smrti.com	 MARK JOHNSON NO. 1187 LICENSED PROFESSIONAL ARCHITECT	 NORTH	MERCY HEALTH SYSTEM - FORE RIVER CAMPUS STORAGE BUILDING RENOVATION ISSUED FOR CONSTRUCTION 5-1-08	<table border="1" style="width: 100%; border-collapse: collapse;"> <thead> <tr> <th>REV</th> <th>DATE</th> <th>DESCRIPTION</th> </tr> </thead> <tbody> <tr> <td>0</td> <td>5-1-08</td> <td>ISSUED FOR CONSTRUCTION</td> </tr> </tbody> </table>	REV	DATE	DESCRIPTION	0	5-1-08	ISSUED FOR CONSTRUCTION	<table border="1" style="width: 100%; border-collapse: collapse;"> <tr> <td>SCALE:</td> <td>1" = 30'</td> </tr> <tr> <td>PROJECT MANAGER:</td> <td>MEGAN</td> </tr> <tr> <td>DESIGNED BY:</td> <td>MEGAN</td> </tr> <tr> <td>DATE OF RECORD:</td> <td>5-1-08</td> </tr> <tr> <td>DATE FILED:</td> <td>5-1-08</td> </tr> <tr> <td>PROJECT NO.:</td> <td>LP101-07193</td> </tr> <tr> <td>SHEET NO.:</td> <td>07193</td> </tr> <tr> <td>SHEET TITLE:</td> <td>LANDSCAPE PLAN</td> </tr> </table>	SCALE:	1" = 30'	PROJECT MANAGER:	MEGAN	DESIGNED BY:	MEGAN	DATE OF RECORD:	5-1-08	DATE FILED:	5-1-08	PROJECT NO.:	LP101-07193	SHEET NO.:	07193	SHEET TITLE:	LANDSCAPE PLAN
REV	DATE	DESCRIPTION																									
0	5-1-08	ISSUED FOR CONSTRUCTION																									
SCALE:	1" = 30'																										
PROJECT MANAGER:	MEGAN																										
DESIGNED BY:	MEGAN																										
DATE OF RECORD:	5-1-08																										
DATE FILED:	5-1-08																										
PROJECT NO.:	LP101-07193																										
SHEET NO.:	07193																										
SHEET TITLE:	LANDSCAPE PLAN																										

PROGRESS PRINT

SHEET NO. LP101

**ELEVATION NOTES:**

- EXISTING BUILDING ENVELOPE (DOORS, ROOFING, SIDING, ETC.) SHALL BE REMOVED IN ITS ENTIRETY.
- EXTERIOR HOLLOW METAL DOOR FRAMES AND DOORS SHALL BE PAINTED TO MATCH STANDING SEAM METAL ROOF.

**LEGEND:**

- WINDOW/LOUWER TYPE, SEE AE620 & AE621
- METAL PANEL TYPE, RE. AE500
- WALL TYPE, SEE G1002 FOR SCHEDULE

CITY OF PORTLAND  
 APPROVED SITE PLAN  
 Subject to Dept. Conditions  
 Date of Approval: 3-11-08  
 as amendment to meeting  
 Please 1 approval dated  
 8-06-2005-08D

