

## GENERAL NOTES

- NUMBERS ADJACENT TO DEVICE SYMBOL DENOTE DEVICE CIRCUIT/ADDRESS. DEVICE 01-1-02 WOULD BE THE SECOND DEVICE ON ADDRESSABLE LOOP 1.
- DETECTOR AND AUDIBLE CIRCUIT POLARITY SHALL BE OBSERVED.
- AUDIBLE/VISUAL CIRCUIT WIRING IS SUPERVISED. NO PARALLEL BRANCHING IS PERMISSIBLE.
- INSTALLATION SHALL BE IN STRICT CONFORMANCE WITH THE NATIONAL ELECTRIC CODE, NFPA 72, LOCAL CODE(S), AND/OR AUTHORITY HAVING JURISDICTION.
- INSTALLATION MATERIALS (I.E. CONDUIT, WIRE, FITTINGS, HANGERS, STANDARD BOXES, FIBER OPTICS CABLE, FITTINGS, AND ASSOCIATED EQUIPMENT) ARE NOT SUPPLIED BY SIEMENS.
- DETECTORS SHALL NOT BE MOUNTED IN DIRECT AIR STREAM OF AIR SUPPLY OUTLETS. PER NFPA 72 2-3.5.1
- WIRING SHALL BE PER PLAN WITH RESPECT TO CONDUCTOR SIZE, & OR CABLE TRAY, TYPE, QUANTITY AND COLOR CODE. CONDUCTORS SHALL BE PERMANENTLY, AND UNIQUELY MARKED FOR FUTURE IDENTIFICATION.
- INSTALLING CONTRACTOR SHALL RETURN ONE SET OF ACCURATELY MARKED DRAWINGS FOR "AS BUILT" PURPOSES.
- FOR ADDITIONAL INSTALLATION INSTRUCTIONS, REFER TO CATALOG CUT SHEETS AND/OR INSTALLATION INSTRUCTIONS.
- THE 120vac POWER ELECTRICAL WORK SUPPLYING FIRE ALARM SYSTEM PANELS MUST COMPLY WITH ARTICLE 725 AND 780 OF NFPA 70, N.E.C. AND NFPA 72 SPECIFICALLY SECTION 1-5.2.5.2. IN REFERENCE TO DEDICATED BRANCH POWER SOURCES. 120vac POWER SHALL NOT BE APPLIED TO FIRE ALARM PANEL WITHOUT DIRECT SUPERVISION OF FIRE ALARM TECHNICIAN.
- ALL SPEAKERSTROBE AND STROBE DEVICES SHALL BE MOUNTED AT A HEIGHT OF 80" A.F.F. OR 6" BELOW DROPPED CEILING, WHICHEVER IS LESS.
- ALL MANUAL PULL STATIONS SHALL BE MOUNTED AT 48" A.F.F. TO THE ACTIVATION DEVICE.
- ALL PANEL NUMBERS AND CIRCUITS WILL BE ON THE RECORD DRAWINGS SET.
- ALL 120VAC CIRCUITS ARE FROM DEDICATED CIRCUITS FROM THE EMERGENCY GENERATOR.
- ALL WIRING IS CLASS "A" UNLESS EXPLICITLY IDENTIFIED OTHERWISE. NO SINGLE SECTION OF CABLE OR RACEWAY MAY CONTAIN BOTH SUPPLY AND RETURN CONDUCTORS OF THE SAME CIRCUIT. SEE NFPA 70, 72 & MANFS. INSTRUCTIONS. MINIMUM SEPARATION [BETWEEN SUPPLY AND RETURN WIRING OF THE SAME CIRCUIT] IS 4" HORIZONTAL AND 2" VERTICAL.
- WIRING SHALL RUN CONTINUOUS FROM FACP TO FIRST DEVICE ON A CIRCUIT AND THEN FROM DEVICE TO DEVICE WITHOUT SPLICING IN PULL BOXES OR OTHER BACK BOXES OF DIFFERENT CIRCUITS. [EXCEPT FATC'S]
- ALL WIRING SHALL BE METERED, VERIFIED TO BE CONTINUOUS, FREE OF GROUND AND FREE OF SHORTS BETWEEN CONDUCTORS AND OTHER CIRCUITS PRIOR TO FINAL EQUIPMENT TRIM.
- ALL CABLES SHALL BE MARKED AS INDICATED ON FIRE ALARM RISER WITH A PERMANENT LABEL AT ALL DEVICES, JUNCTION BOXES AND FACP.
- THE ELECTRICAL CONTRACTOR SHALL CLEAN ALL DIRT AND DEBRIS FROM THE OUTSIDE AND INSIDE OF THE FIRE ALARM BACK BOXES AND JUNCTION BOXES AFTER COMPLETION OF THEIR INSTALLATION.
- DETECTORS MUST BE RATED FOR TEMPERATURE IN THE ENVIRONMENT IN WHICH IT IS LOCATED.
- ALL WIRING BETWEEN FLOORS SHALL BE LOCATED IN CONDUIT.
- PER NFPA 72 SECTION 5-3.6.1.3 DETECTORS SHALL NOT BE INSTALLED UNTIL AFTER THE CONSTRUCTION CLEAN-UP OF ALL TRADES IS COMPLETE AND FINAL. EXCEPTION: WHERE REQUIRED BY THE AUTHORITY HAVING JURISDICTION FOR PROTECTION DURING CONSTRUCTION. DETECTORS THAT HAVE BEEN INSTALLED PRIOR TO FINAL CLEAN-UP BY ALL TRADES SHALL BE CLEANED OR REPLACED IN ACCORDANCE WITH NFPA 72 CHAPTER 7.

## SYMBOL LEGEND

QUANT.	SYM.	DESCRIPTION	MODEL	BACK BOX
1	FACP	FIRE ALARM CONTROL PANEL	XLSV	CAB-3
1	FACR	FIRE ALARM CONTROL PANEL, REMOTE	XLSV-R	CAB-2
3	FAR	FIRE ALARM REMOTE ANNUNCIATOR	SSD	SEE INSTALLATION INSTRUCTIONS
8	SOP	SIGNAL DRIVER PANEL	PAD-3	N/A
1	FAC	FIRE ALARM INTERFACE CABINET	EA-31	INCLUDED
1	BAC	BUILDING AUTOMATION INTERFACE CABINET	F.B.O.	N/A
25	MPS	MANUAL PULL STATION	HMS-D	3.5" DEEP SINGLE GANG
174	SD	CEILING SMOKE DETECTOR/BASE	HFP-11 / DB-11	OCTAGON BOX
16	SDR	SMOKE DETECTOR W/ RELAY BASE	HFP-11 / DB-HR	4" SQUARE
62	RL	REMOTE INDICATING LAMP	RL-HW	SINGLE GANG
17	DT	DUCT SMOKE DETECTOR/ HOUSING	HFP-11/AD-11P	N/A
17	N/A	DUCT SAMPLING TUBE	ST-XXX	N/A
17	RTS	REMOTE TEST STATION	SEE DETAIL	SEE DETAIL
58	AIM	ADDRESSABLE INTERFACE MODULE, SINGLE INPUT	HTRI-S	4" SQUARE
34	AIMR	ADDRESSABLE INTERFACE MODULE W/ RELAY	HTRI-R	4" SQUARE
1	DSM	DUAL SYNC CONTROL UNIT	DSC	4" SQUARE
180	SLS	FIRE ALARM SPEAKER / STROBE	S-LP SERIES	4" SQ X 2 1/8" DEEP
35	US	FIRE ALARM STROBE UNIT	U-MCS	TWO GANG OR 4" SQUARE BOX
32	DH	DOOR HOLDER	F.B.O.	N/A
1	EB	FIRE ALARM EXTERIOR BEACON	NA	SEE INST. INSTRCTNS
6	DT135	CEILING THERMAL DETECTOR/ BASE	DT-135F	OCTAGON BOX
-	WS	WATERFLOW SWITCH (BY OTHERS)	NA	NA
-	TS	TAMPER SWITCH (BY OTHERS)	NA	NA
-	KB	KNOX BOX	NA	NA
1	MMB	MUNICIPAL MASTERBOX	NA	NA
6	FATC	FIRE ALARM TERMINAL CABINET	SSU00635	N/A
6	R1	REMOTE POLARIZED RELAY, 24VDC	RPR-1	NA
3	R2	REMOTE RELAY, 120VAC	F.B.O.	NA
6	ELCP	ELEVATOR SHUNT-TRIP CONTROL PANEL	SXL-EX	N/A

REVISIONS		
REV	DESCRIPTION	DATE
1	For Review	7-02-2007

# SIEMENS

BUILDING TECHNOLOGIES

**FIRE AND SECURITY  
DIVISION**

66 MUSSEY RD.

SCARBOROUGH, ME. 04074

1-207-885-4100

**Mercy Hospital-  
Fore River**

201 Fore River Parkway  
Portland, ME. 04102

**Fire Alarm System  
Notes, Details, &  
Equip List & Legend**

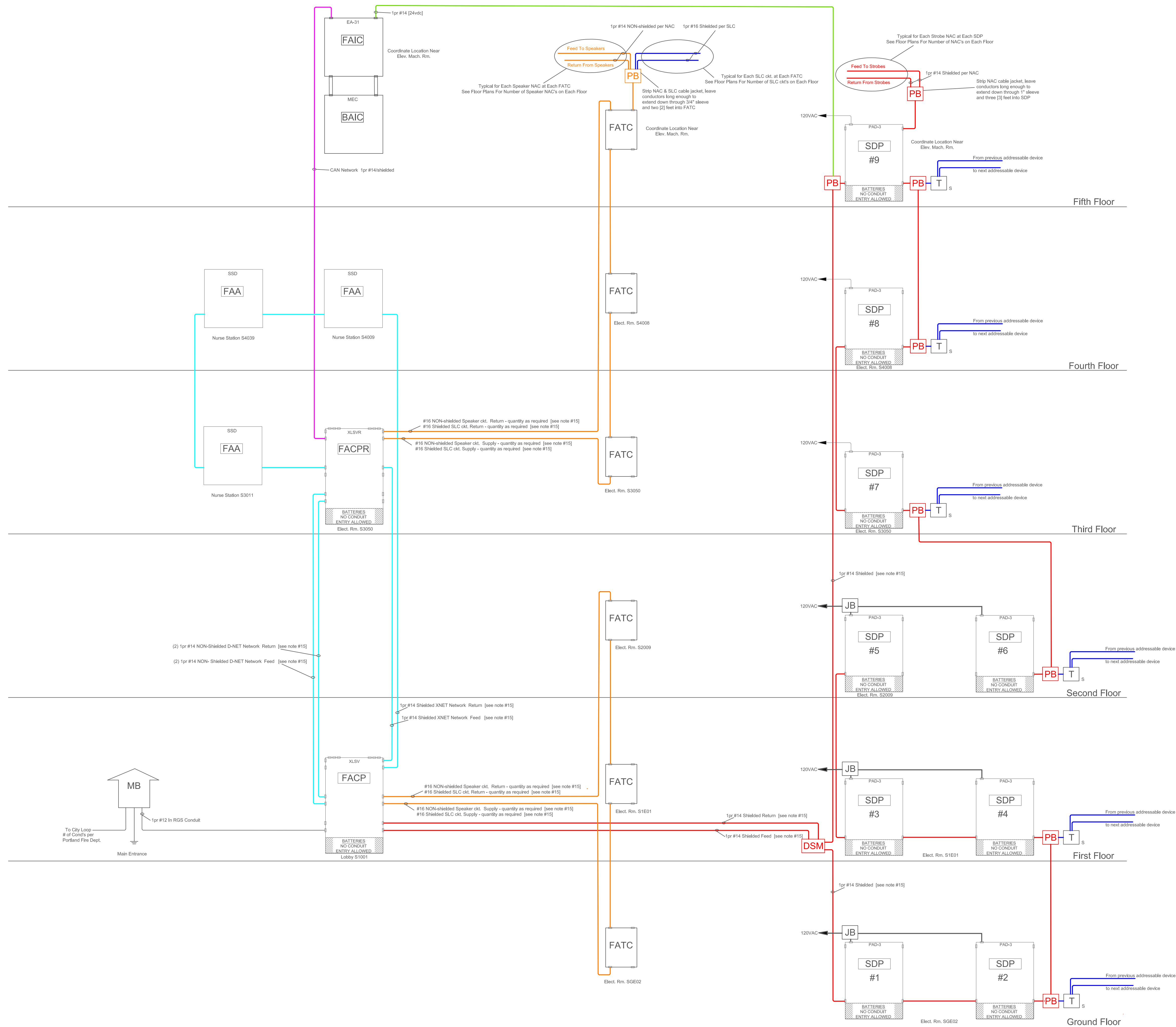
DWG NO.

**FA-1**

FILE NAME

JOB #

440P-019349



REVISIONS		
REV	DESCRIPTION	DATE
1	For Review	07-02-2007

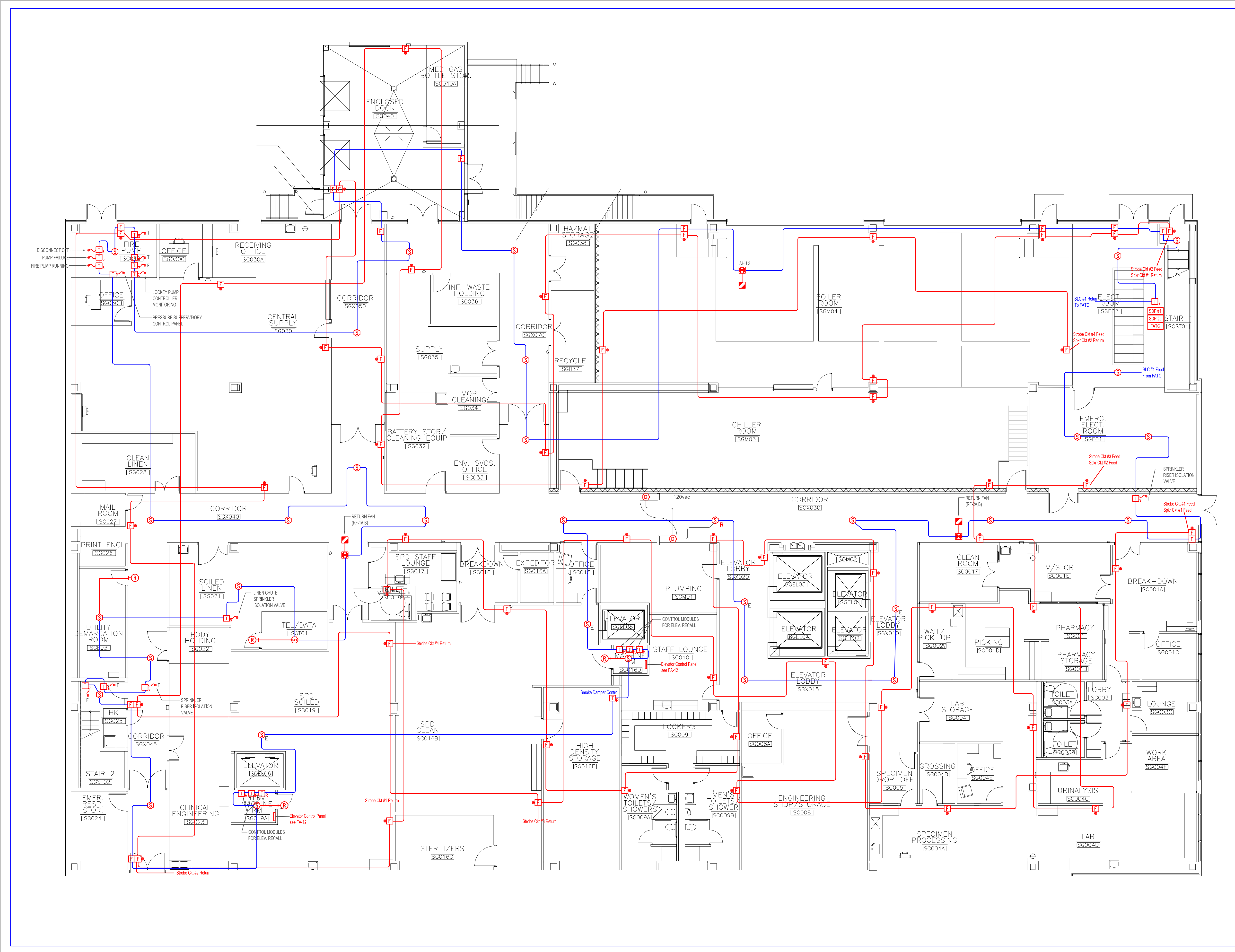
**SIEMENS**  
 BUILDING TECHNOLOGIES  
**FIRE AND SECURITY**  
**DIVISION**  
 66 MUSSEY RD.  
 SCARBOROUGH, ME. 04074  
 1-207-885-4100

**Mercy Hospital-**  
**Fore River**  
 201 Fore River Parkway  
 Portland, ME. 04102

**Fire Alarm System**  
**Control Equipment**  
**One Line Riser**

DWG NO.	<b>FA-2</b>
FILE NAME	JOB # <b>44OP-019349</b>

REVISIONS		
REV	DESCRIPTION	DATE
1	For Review	7-02-2007



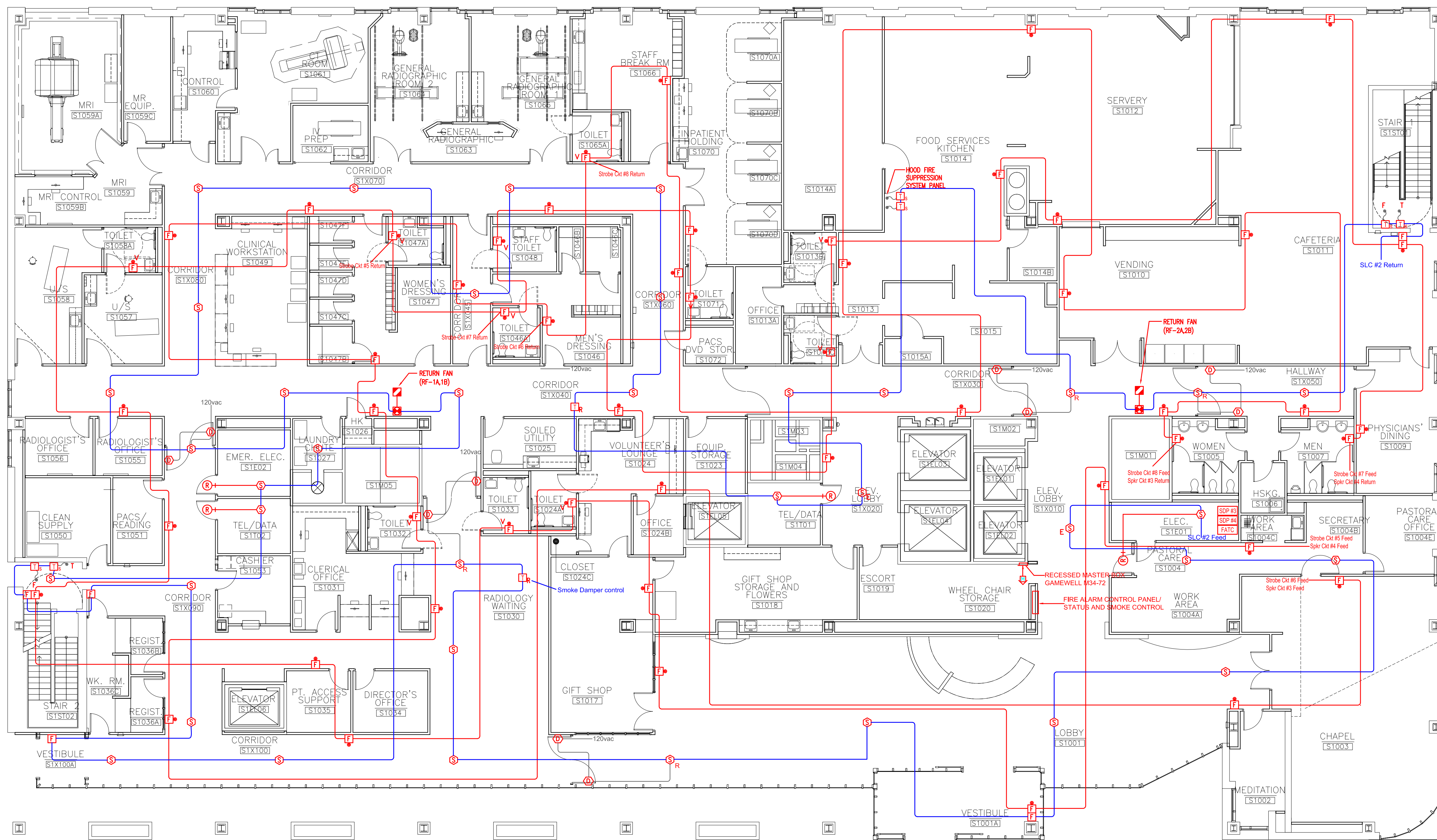
**SIEMENS**  
**BUILDING TECHNOLOGIES**  
**FIRE AND SECURITY**  
**DIVISION**  
 66 MUSSEY RD.  
 SCARBOROUGH, ME. 04074  
 1-207-885-4100

**Mercy Hospital-**  
**Fore River**  
 201 Fore River Parkway  
 Portland, ME. 04102

**Fire Alarm System**  
**Ground Floor**  
**Device Wiring**

DWG NO.	<b>FA-3</b>
FILE NAME	JOB # 44OP-019349

REVISIONS		
REV	DESCRIPTION	DATE
1	For Review	7-02-2007



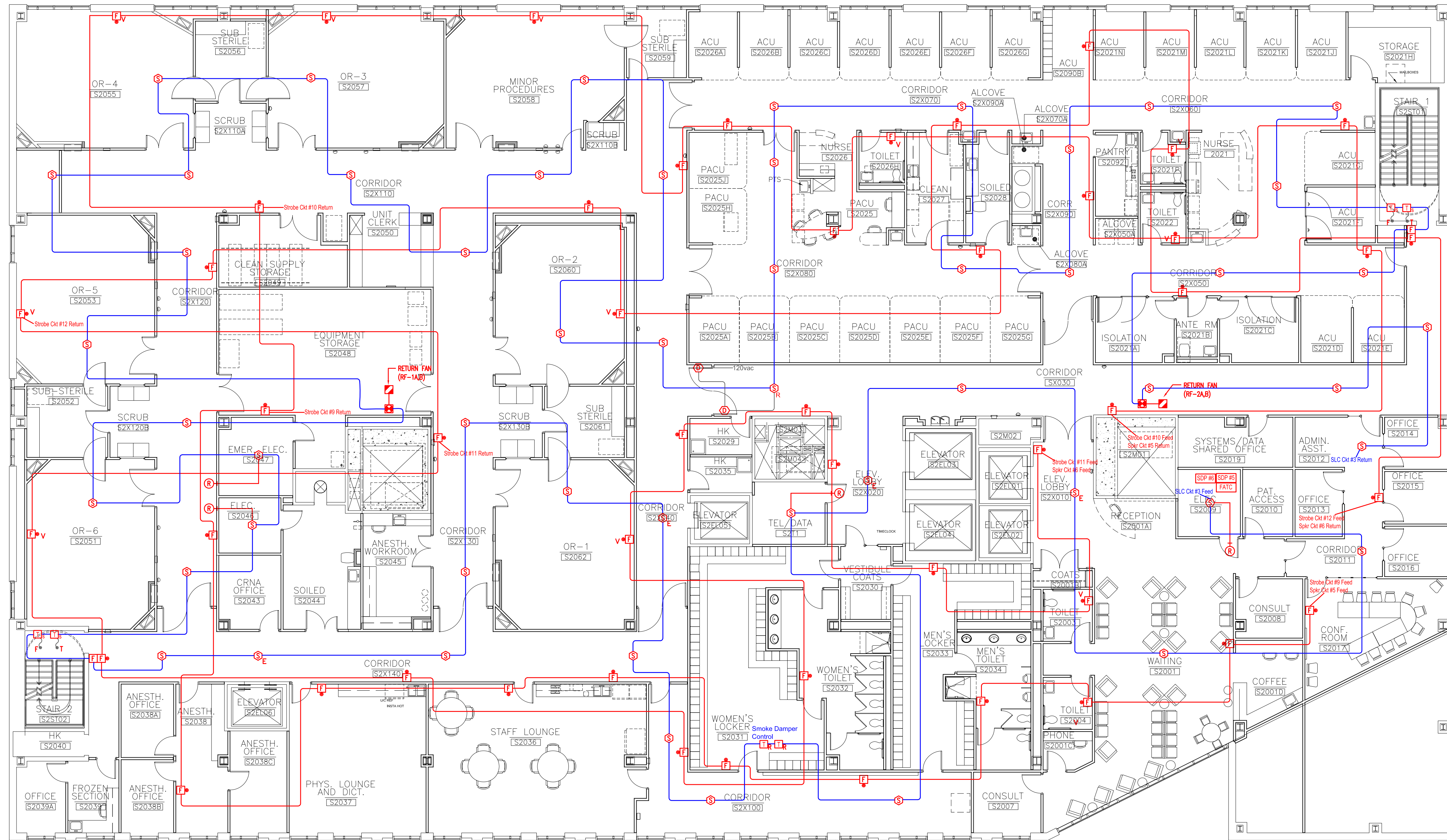
**SIEMENS**  
 BUILDING TECHNOLOGIES  
**FIRE AND SECURITY**  
 DIVISION  
 66 MUSSEY RD.  
 SCARBOROUGH, ME. 04074  
 1-207-885-4100

**Mercy Hospital-  
 Fore River**  
 201 Fore River Parkway  
 Portland, ME. 04102

**Fire Alarm System  
 First Floor  
 Device Wiring**

1 FIRST FLOOR PLAN  
 A1.01 1/8" = 1'-0"

REVISIONS		
REV	DESCRIPTION	DATE
1	For Review	7-02-2007



**SIEMENS**  
 BUILDING TECHNOLOGIES  
**FIRE AND SECURITY**  
 DIVISION  
 66 MUSSEY RD.  
 SCARBOROUGH, ME. 04074  
 1-207-885-4100

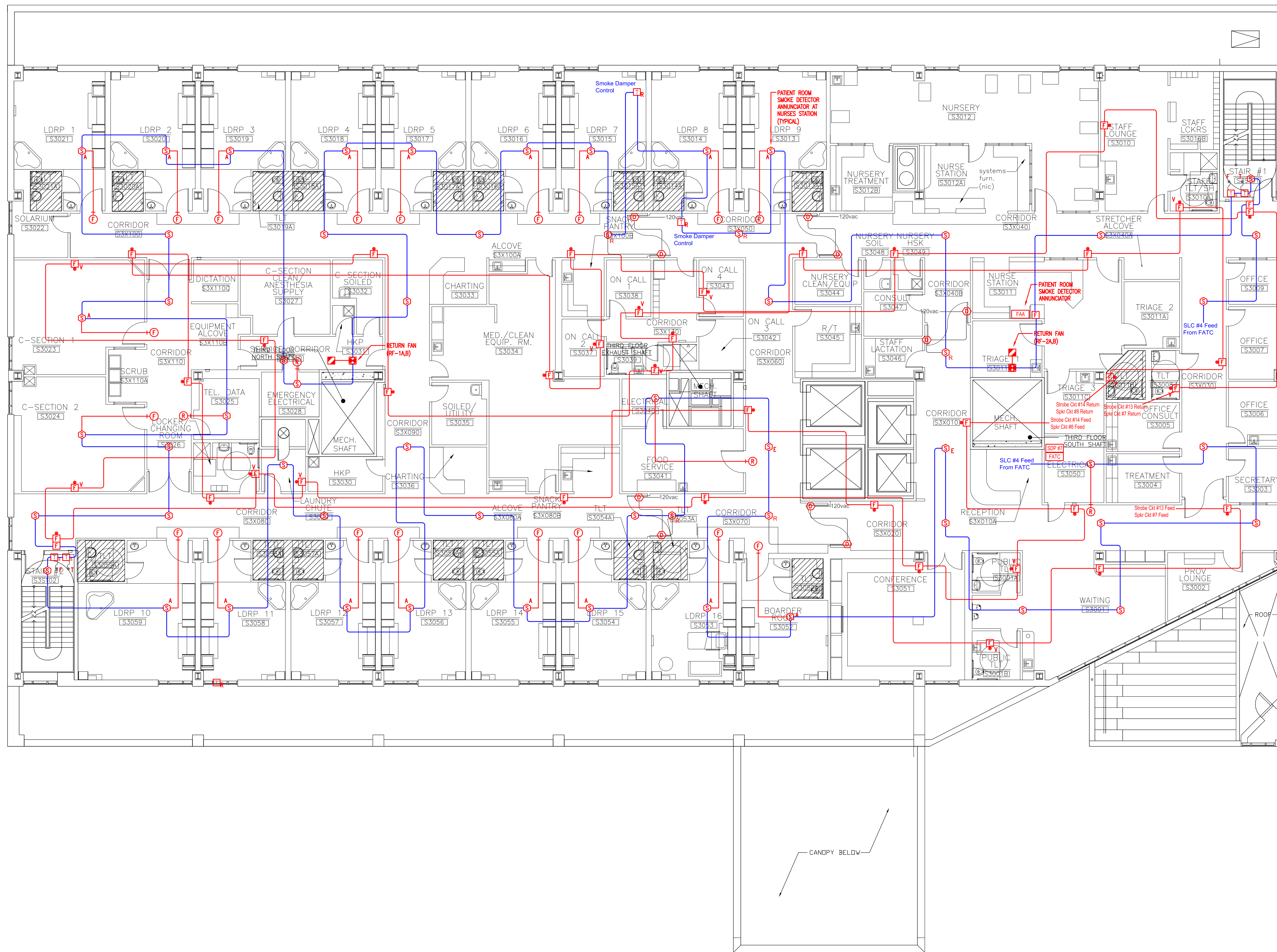
**Mercy Hospital-  
 Fore River**  
 201 Fore River Parkway  
 Portland, ME. 04102

**Fire Alarm System  
 Second Floor  
 Device Wiring**

1 SECOND FLOOR PLAN  
 A1.03 1/8" = 1'-0"

DWG NO. **FA-5**  
 FILE NAME JOB # 44OP-019349

REV	DESCRIPTION	DATE
1	For Review	7-02-2007

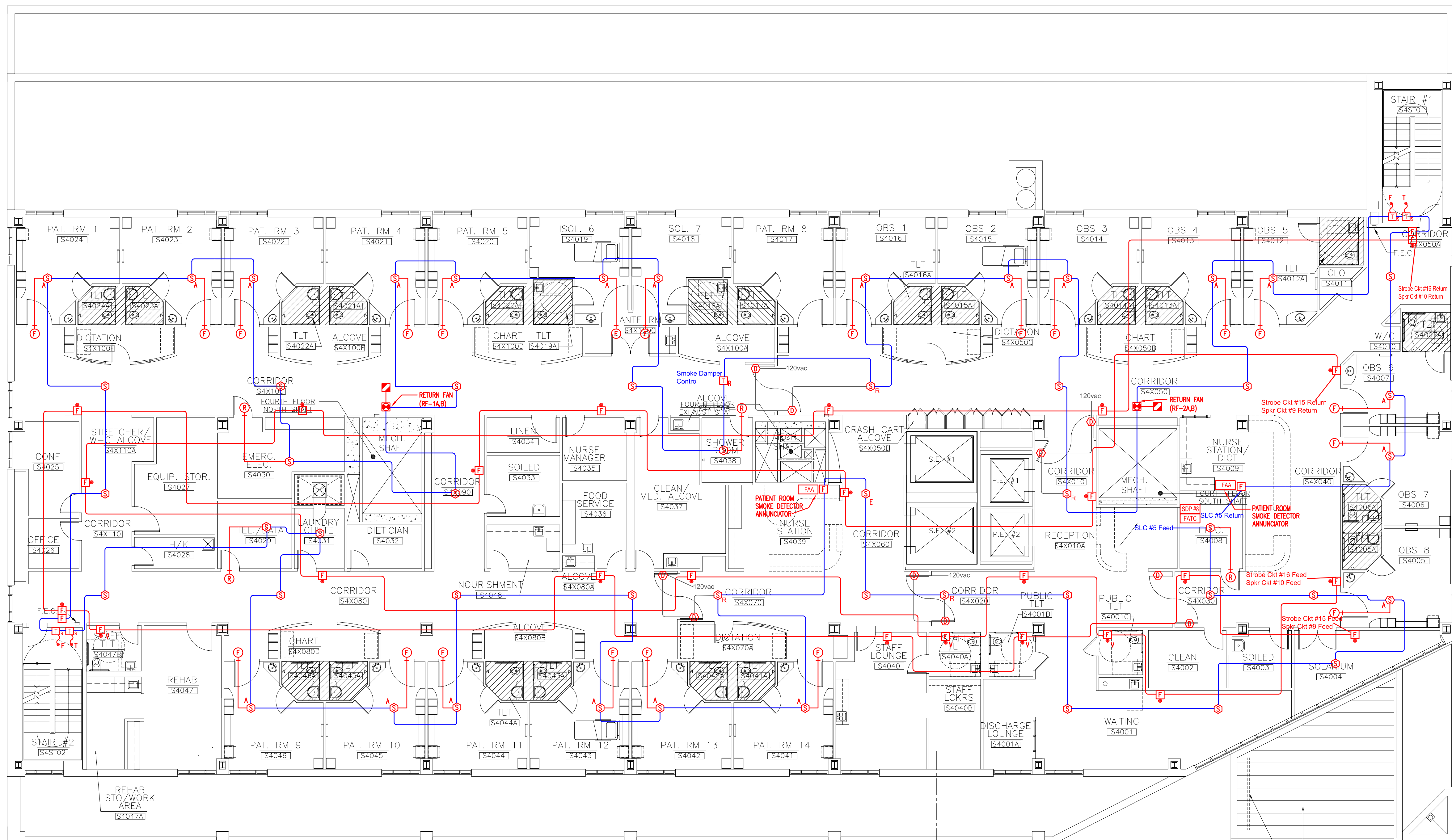


**SIEMENS**  
 BUILDING TECHNOLOGIES  
**FIRE AND SECURITY**  
 DIVISION  
 66 MUSSEY RD.  
 SCARBOROUGH, ME. 04074  
 1-207-885-4100

**Mercy Hospital-  
 Fore River**  
 201 Fore River Parkway  
 Portland, ME. 04102

**Fire Alarm System  
 Third Floor  
 Device Wiring**

DWG. NO.	<b>FA-6</b>
FILE NAME	JOB # 44OP-019349



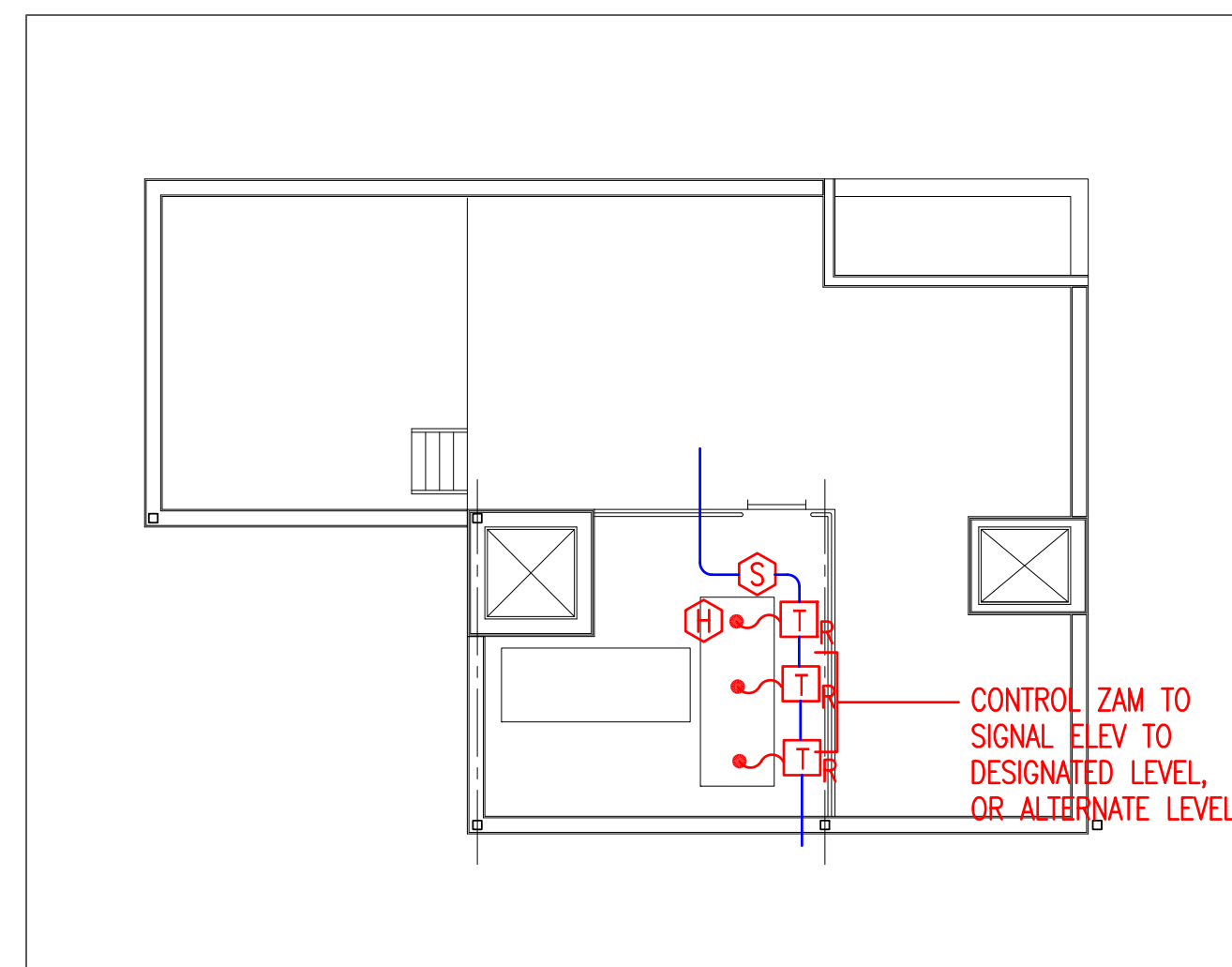
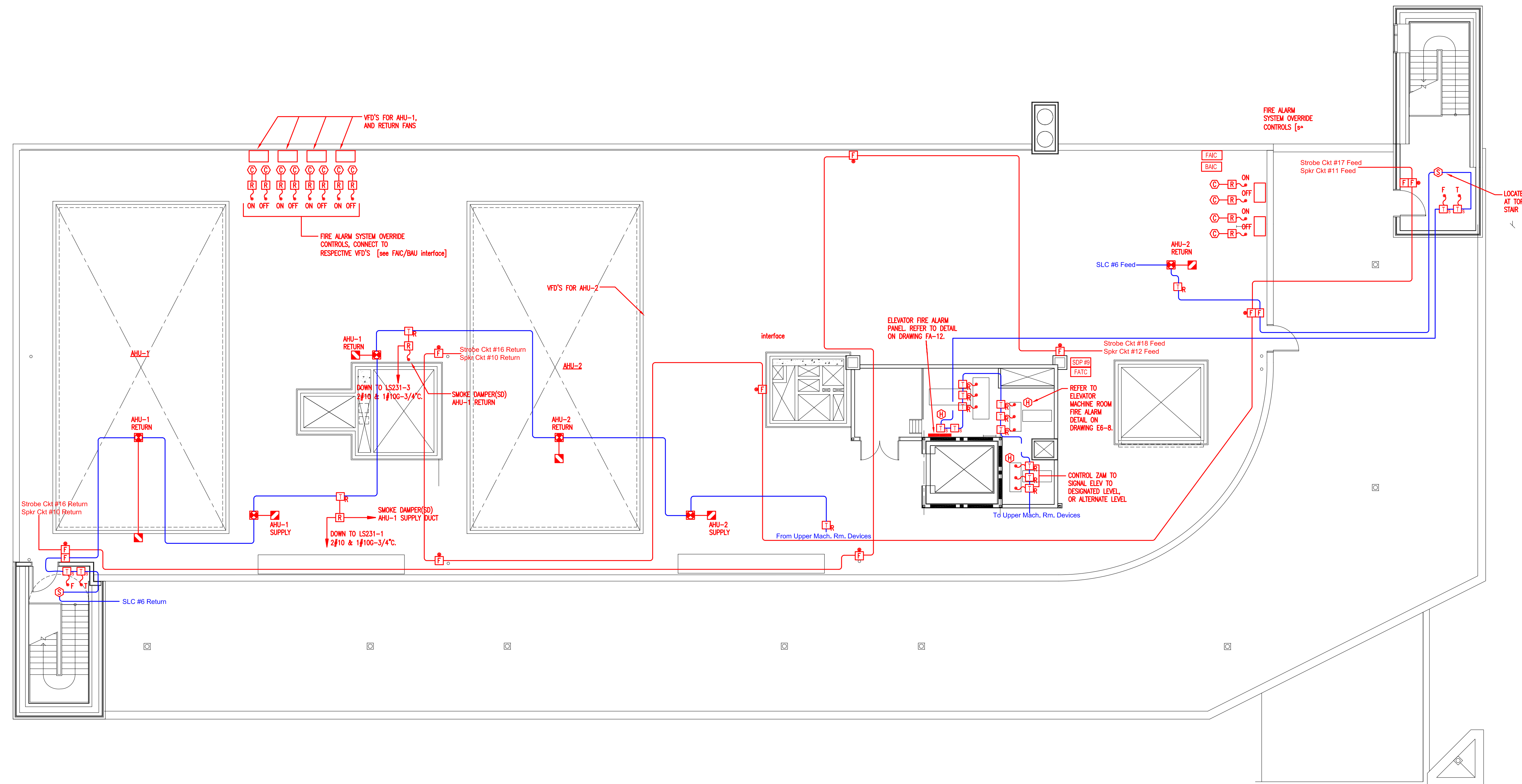
REV	DESCRIPTION	DATE
1	For Review	7-02-2007

**SIEMENS**  
**BUILDING TECHNOLOGIES**  
**FIRE AND SECURITY**  
**DIVISION**  
**66 MUSSEY RD.**  
**SCARBOROUGH, ME. 04074**  
**1-207-885-4100**

**Mercy Hospital-**  
**Fore River**  
 201 Fore River Parkway  
 Portland, ME. 04102

**Fire Alarm System**  
**Fourth Floor**  
**Device Wiring**

DWG NO.	<b>FA-7</b>
FILE NAME	JOB # 44OP-019349



REVISIONS		
REV	DESCRIPTION	DATE
1	For Review	7-02-2007

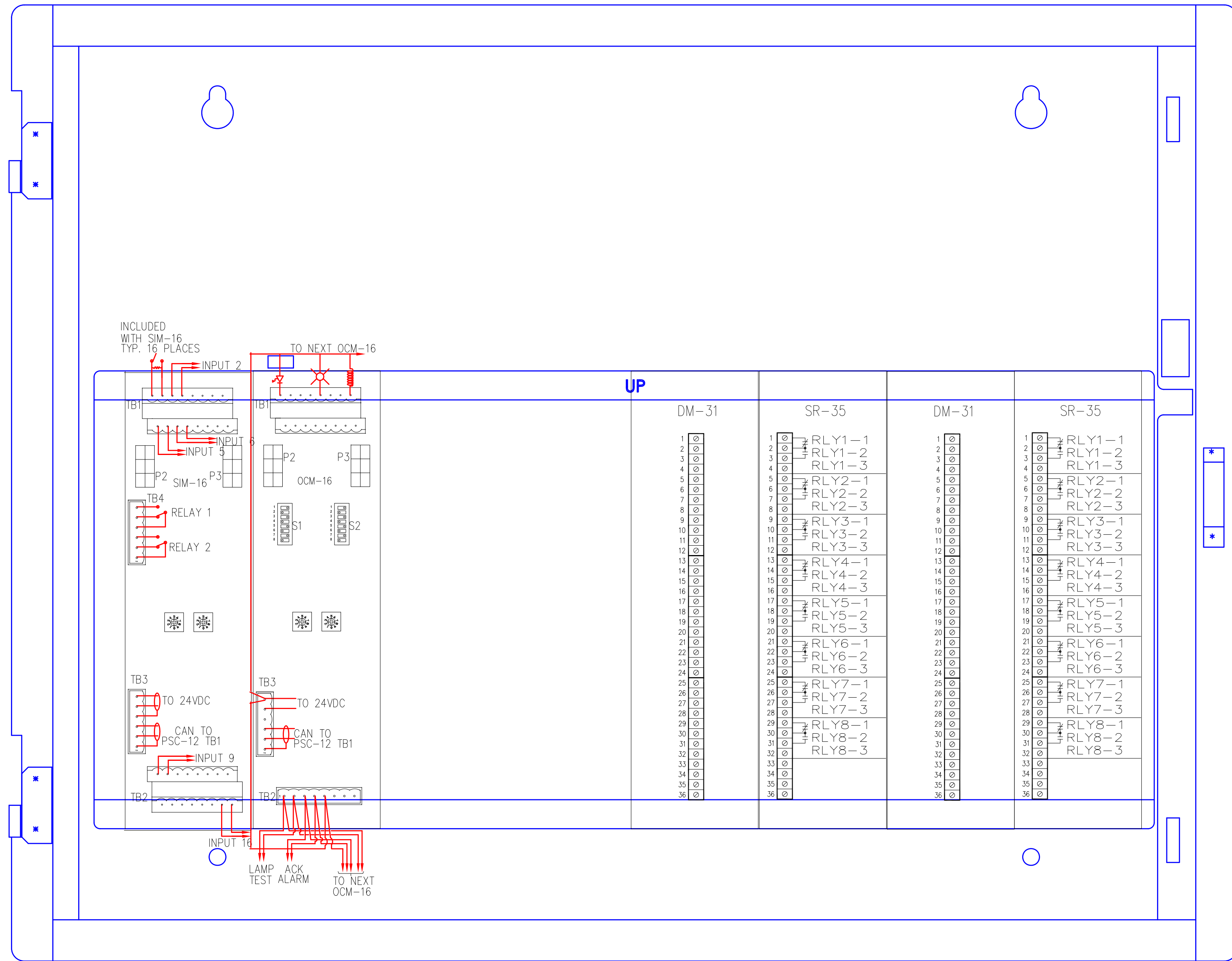
**SIEMENS**  
 BUILDING TECHNOLOGIES  
**FIRE AND SECURITY**  
**DIVISION**  
 66 MUSSEY RD.  
 SCARBOROUGH, ME. 04074  
 1-207-885-4100

**Mercy Hospital-**  
**Fore River**  
 201 Fore River Parkway  
 Portland, ME. 04102

**Fire Alarm System**  
**Fifth Floor**  
**Device Wiring**

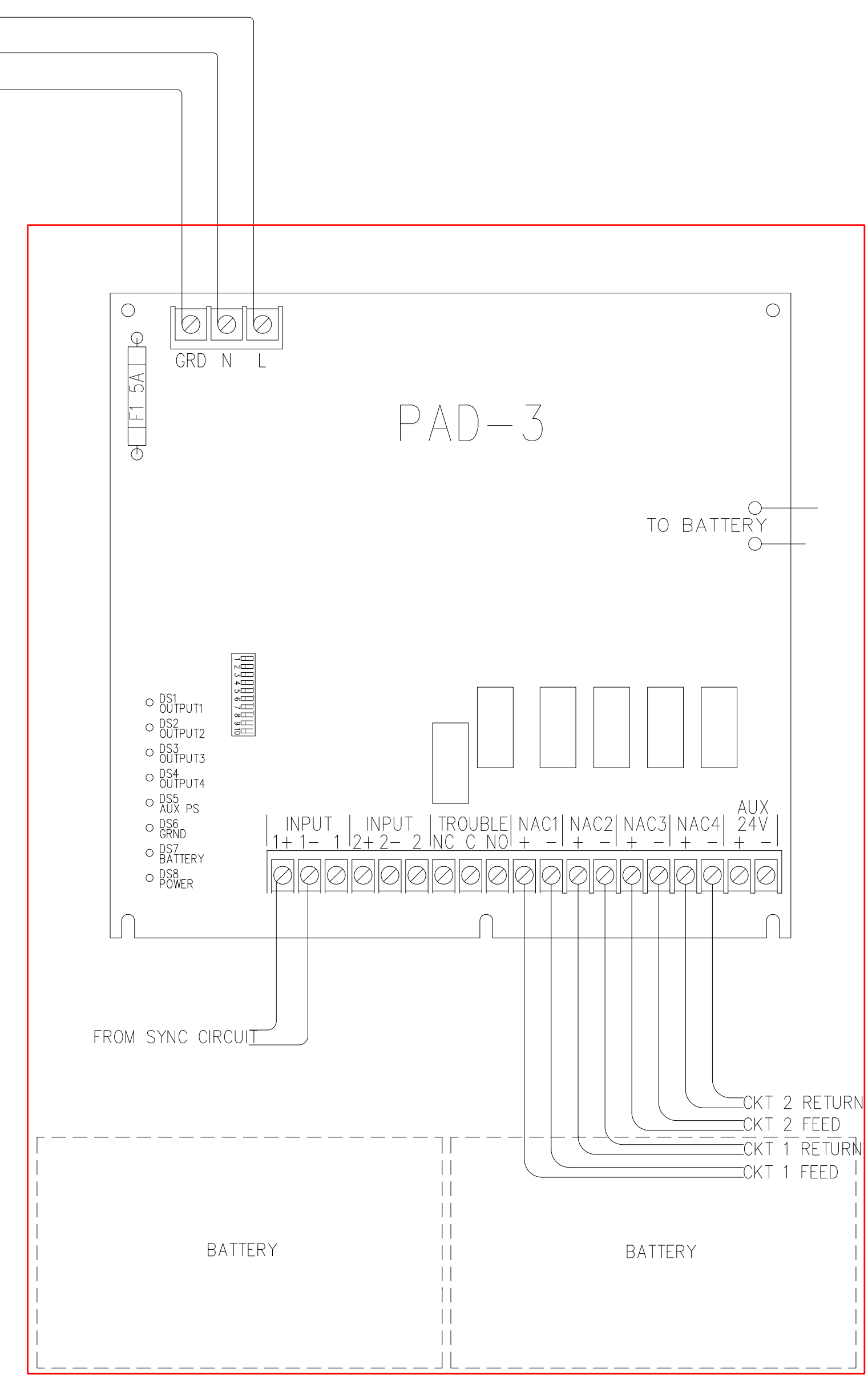
DWG NO. **FA-8**  
 FILE NAME JOB # **44OP-019349**





**FAIC**

DEDICATED EMERGENCY POWER  
120VAC-60HZ



**SDP**

REVISIONS		
REV	DESCRIPTION	DATE
1	For Review	7-02-2007

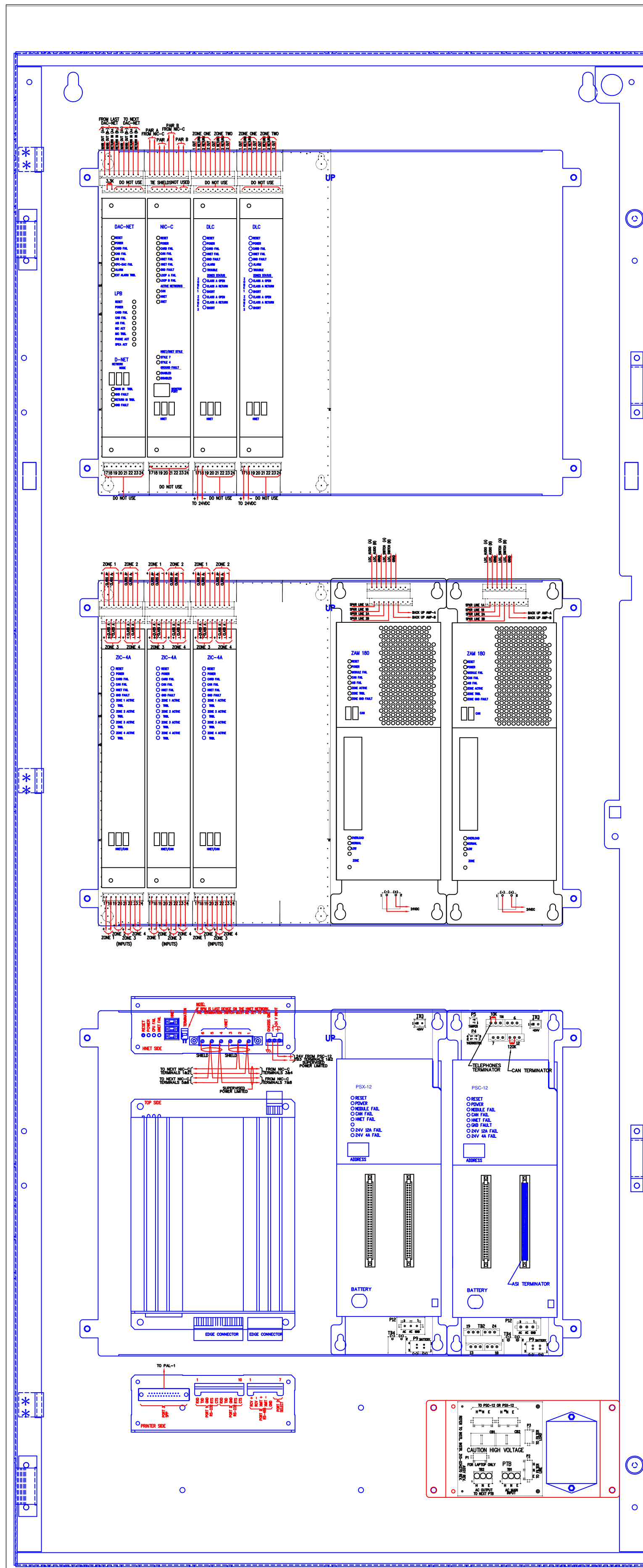
**SIEMENS**  
**BUILDING TECHNOLOGIES**  
**FIRE AND SECURITY**  
**DIVISION**  
 66 MUSSEY RD.  
 SCARBOROUGH, ME. 04074  
 1-207-885-4100

**Mercy Hospital -**  
**Fore River**  
 201 Fore River Parkway  
 Portland, ME. 04102

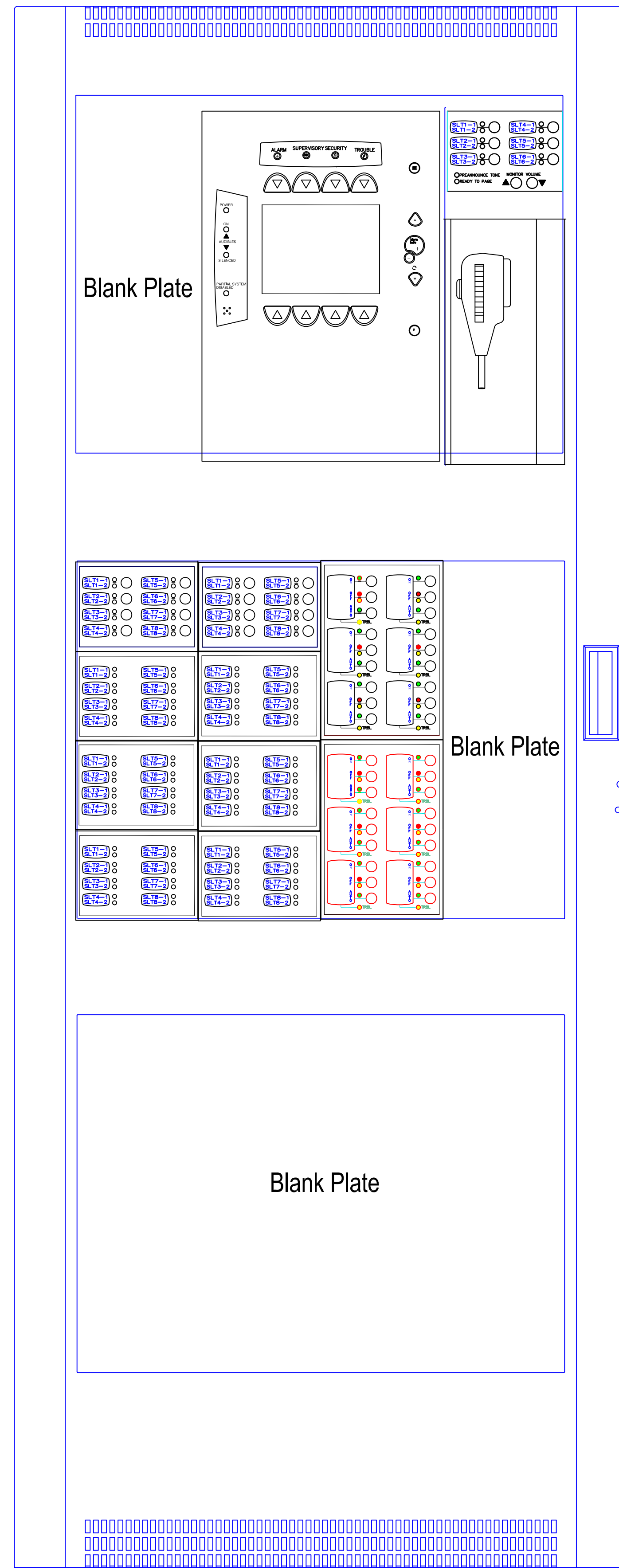
**SDP & FAIC**  
**DETAIL**

DWG NO. **FA-9**

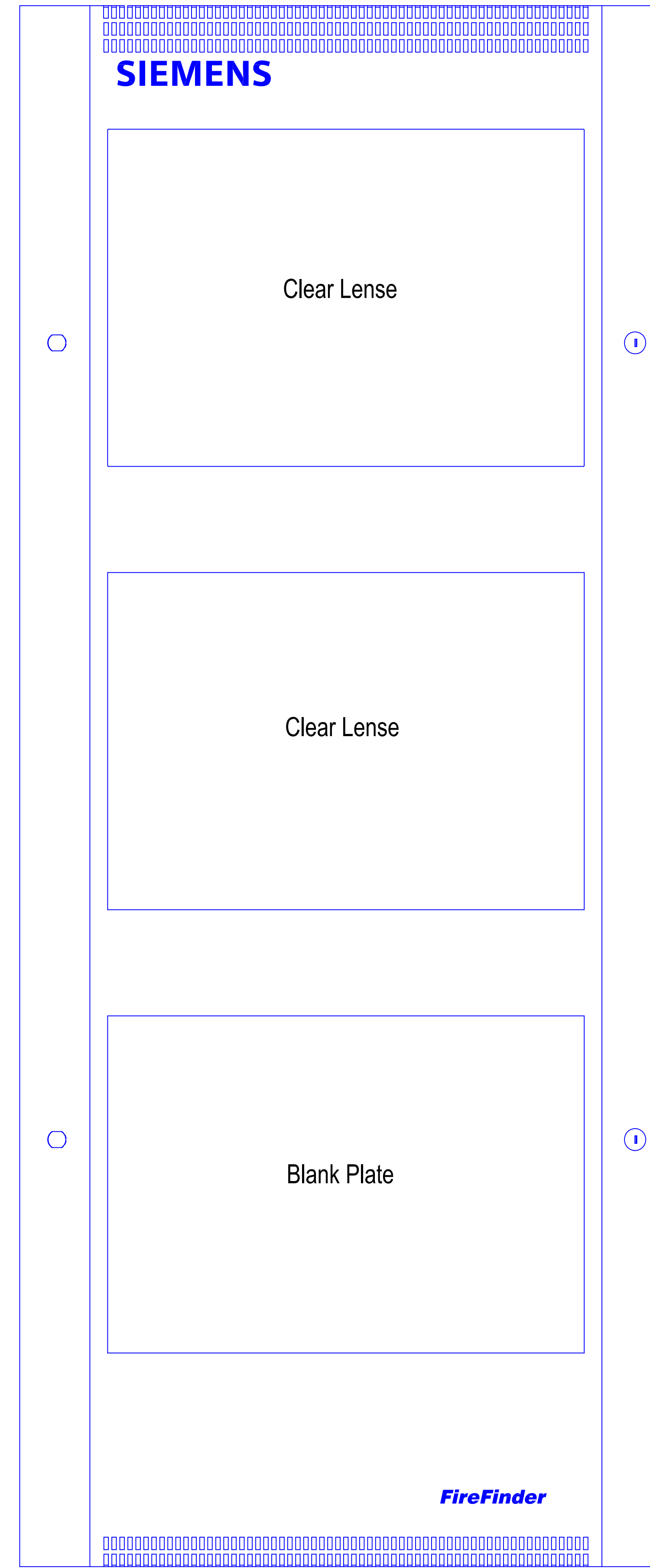
FILE NAME JOB # **44OP-019349**



CAB 3  
BACKBOX



CAB 3  
INNER DOOR



CAB 3  
OUTER DOOR

REVISIONS		
REV	DESCRIPTION	DATE
1	For Review	7-02-2007

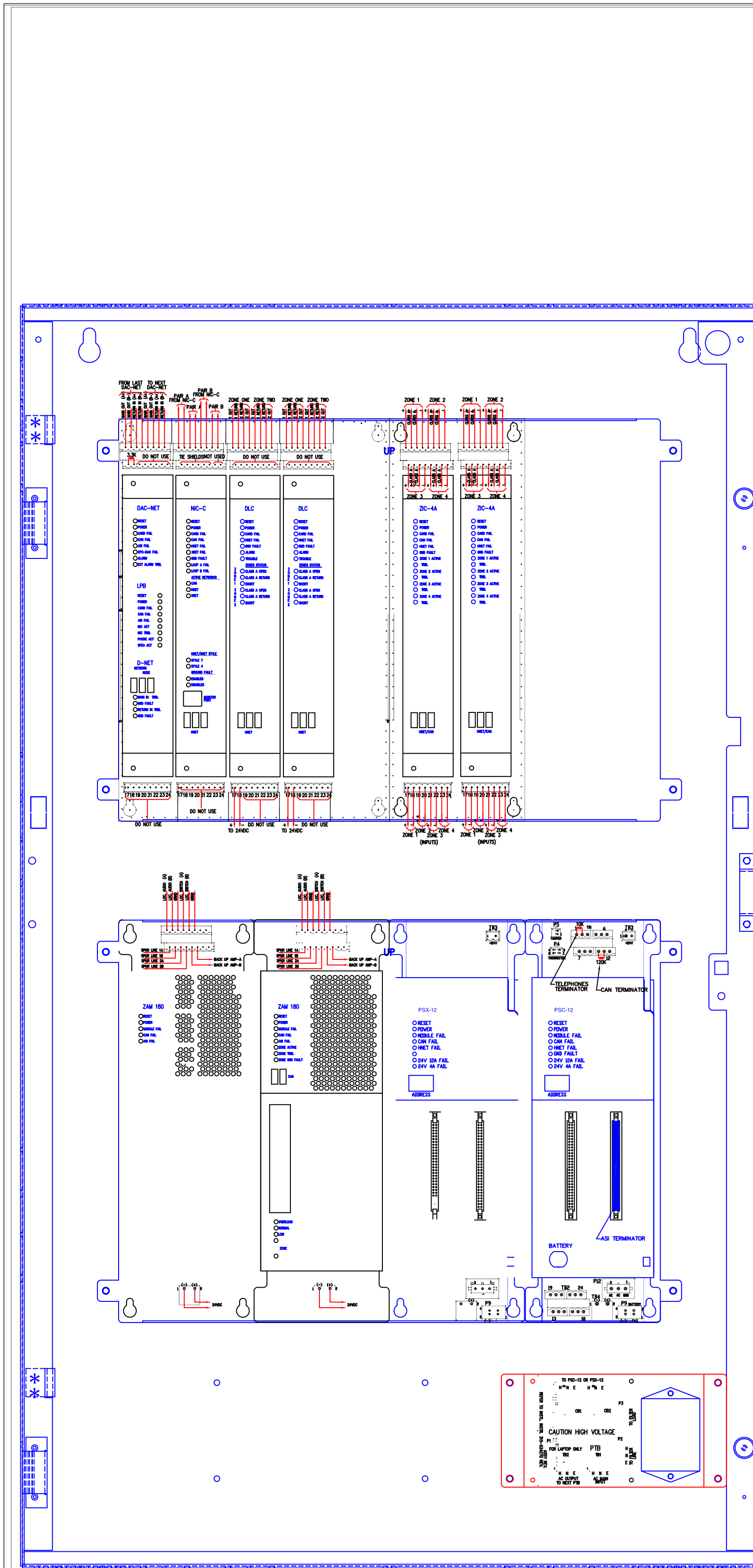
**SIEMENS**  
 BUILDING TECHNOLOGIES  
**FIRE AND SECURITY**  
 DIVISION  
 66 MUSSEY RD.  
 SCARBOROUGH, ME. 04074  
 1-207-885-4100

**Mercy Hospital-  
 Fore River**  
 201 Fore River Parkway  
 Portland, ME. 04102

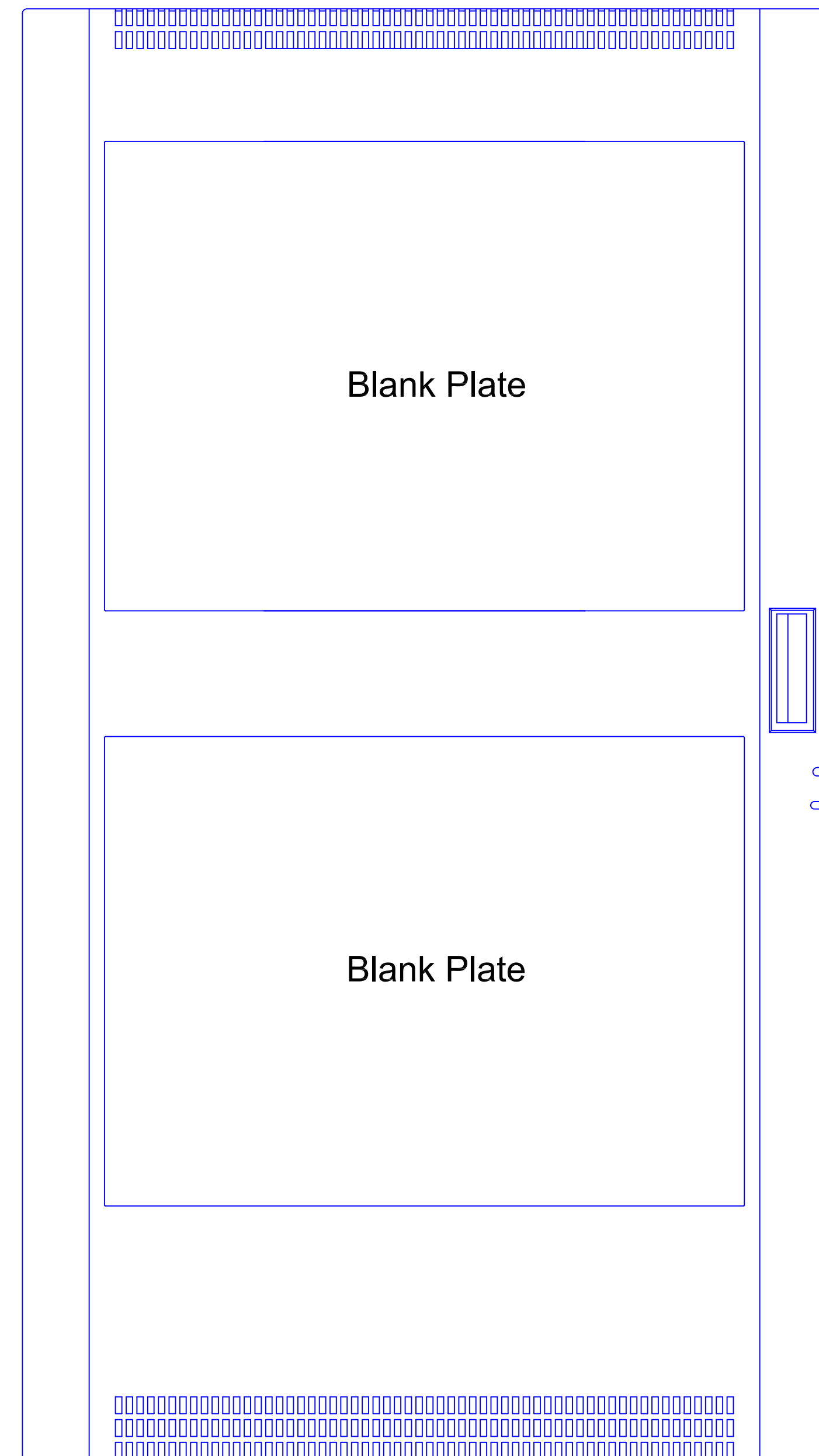
**Fire Alarm System  
 FACP  
 Internal Layout**

DWG. NO. **FA-10**

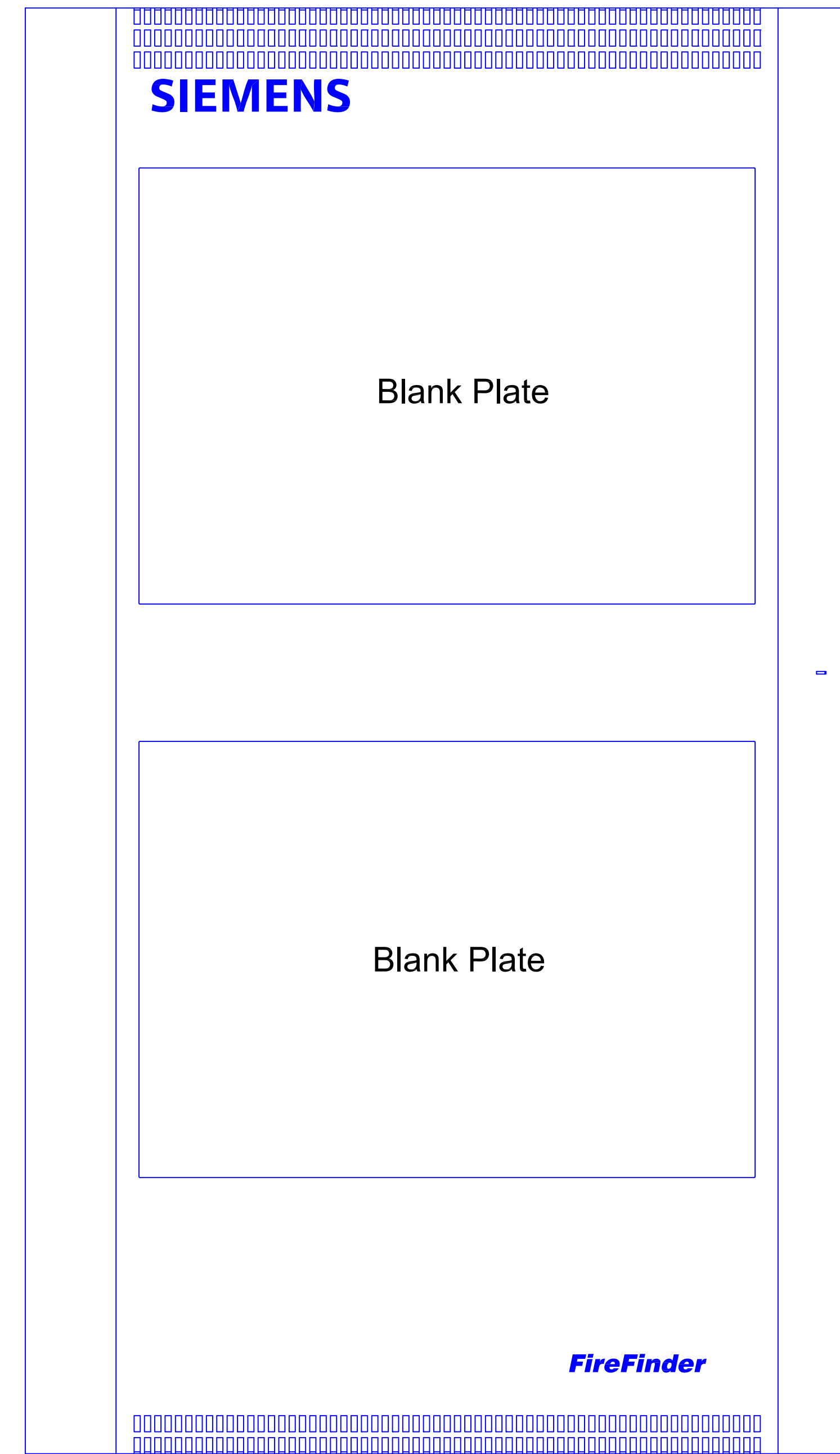
FILE NAME JOB # **44OP-019349**



CAB 2  
BACKBOX



CAB 2  
INNER DOOR



CAB 2  
OUTER DOOR

REVISIONS		
REV	DESCRIPTION	DATE
1	For Review	7-02-2007

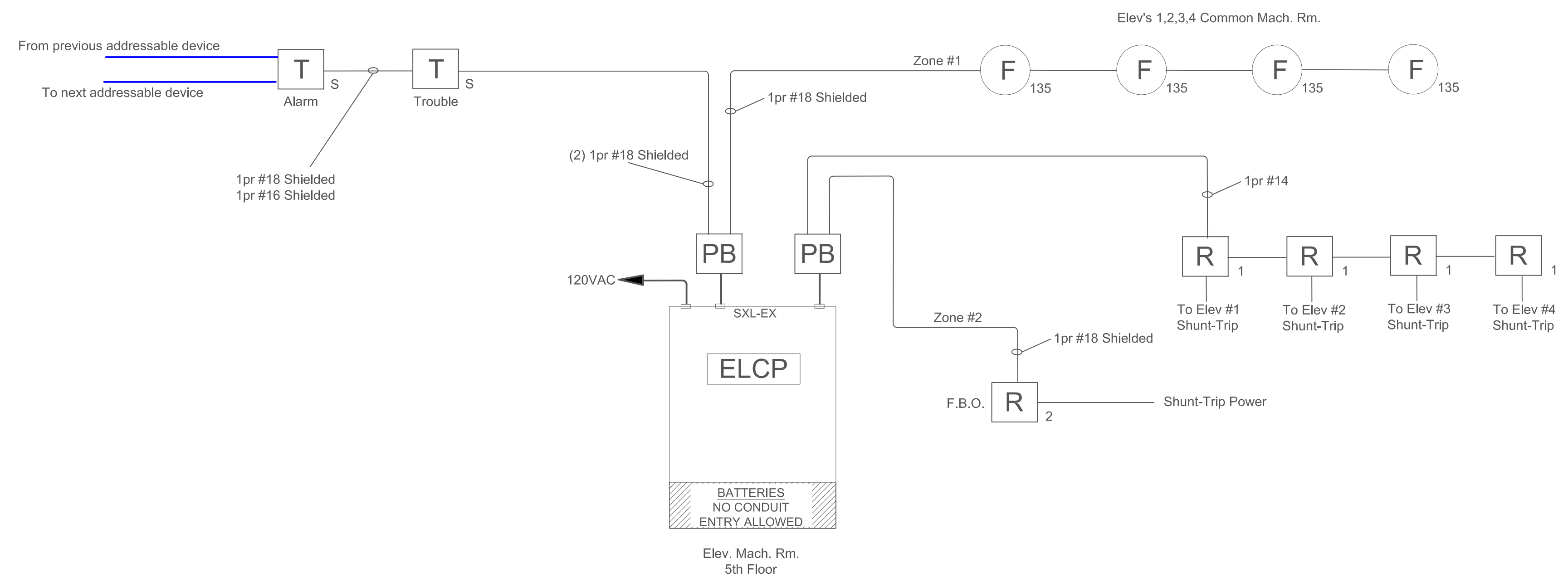
**SIEMENS**  
 BUILDING TECHNOLOGIES  
**FIRE AND SECURITY**  
 DIVISION  
 66 MUSSEY RD.  
 SCARBOROUGH, ME. 04074  
 1-207-885-4100

**Mercy Hospital-  
 Fore River**  
 201 Fore River Parkway  
 Portland, ME. 04102

**Fire Alarm System  
 FACPR  
 Internal Layout**

DWG NO.	<b>FA-11</b>
FILE NAME	JOB # 44OP-019349

Elevator Shunt-Trip Control Panel Riser  
Elev's 1,2,3,4



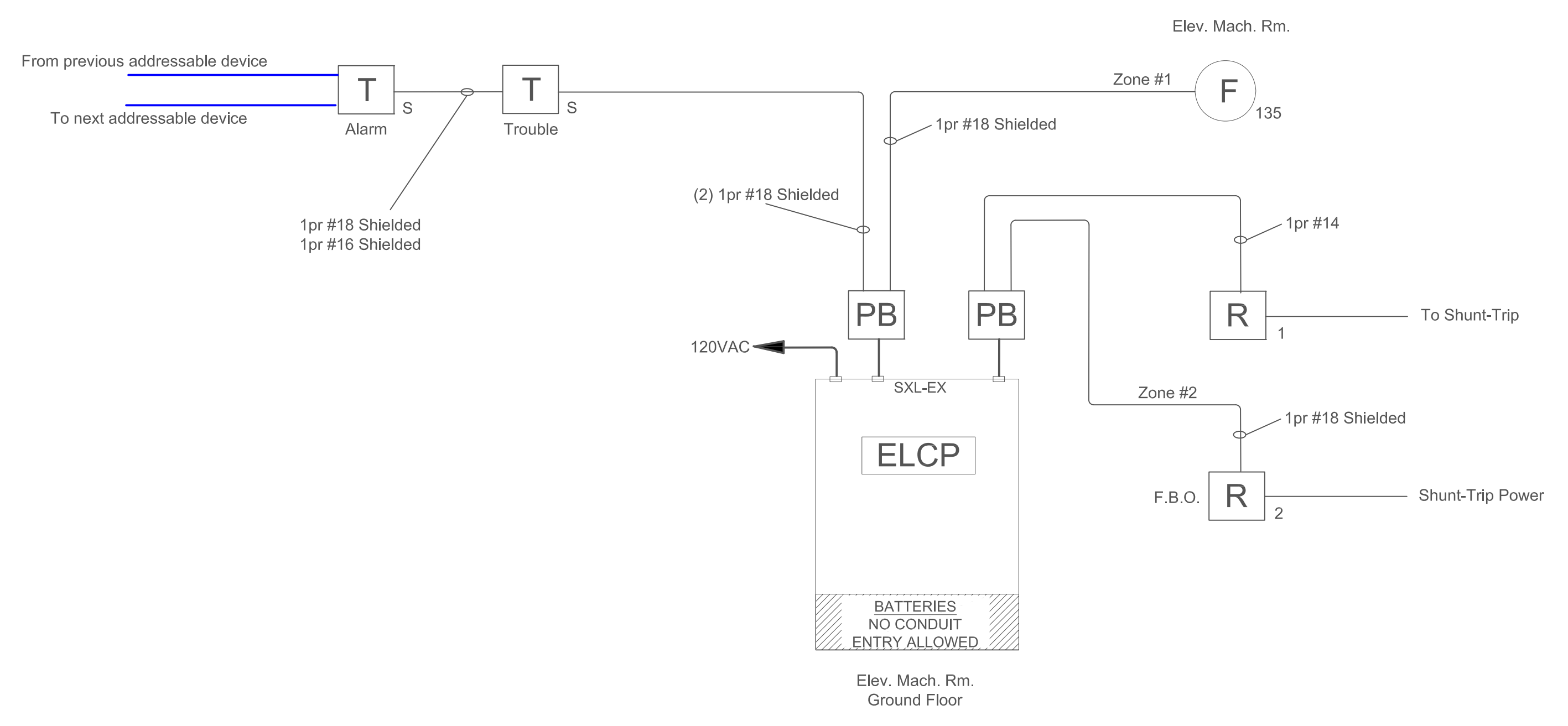
REVISIONS		
REV	DESCRIPTION	DATE
1	For Review	07-02-2007

**SIEMENS**  
 BUILDING TECHNOLOGIES  
**FIRE AND SECURITY**  
**DIVISION**  
 66 MUSSEY RD.  
 SCARBOROUGH, ME. 04074  
 1-207-885-4100

**Mercy Hospital-  
 Fore River**  
 201 Fore River Parkway  
 Portland, ME. 04102

**Fire Alarm System  
 Elevator Shunt-Trip  
 One Line Riser**

Elevator Shunt-Trip Control Panel Riser  
Elev's 5 or 6 (Typical)



DWG NO.	<b>FA-12</b>
FILE NAME	JOB # <b>44OP-019349</b>