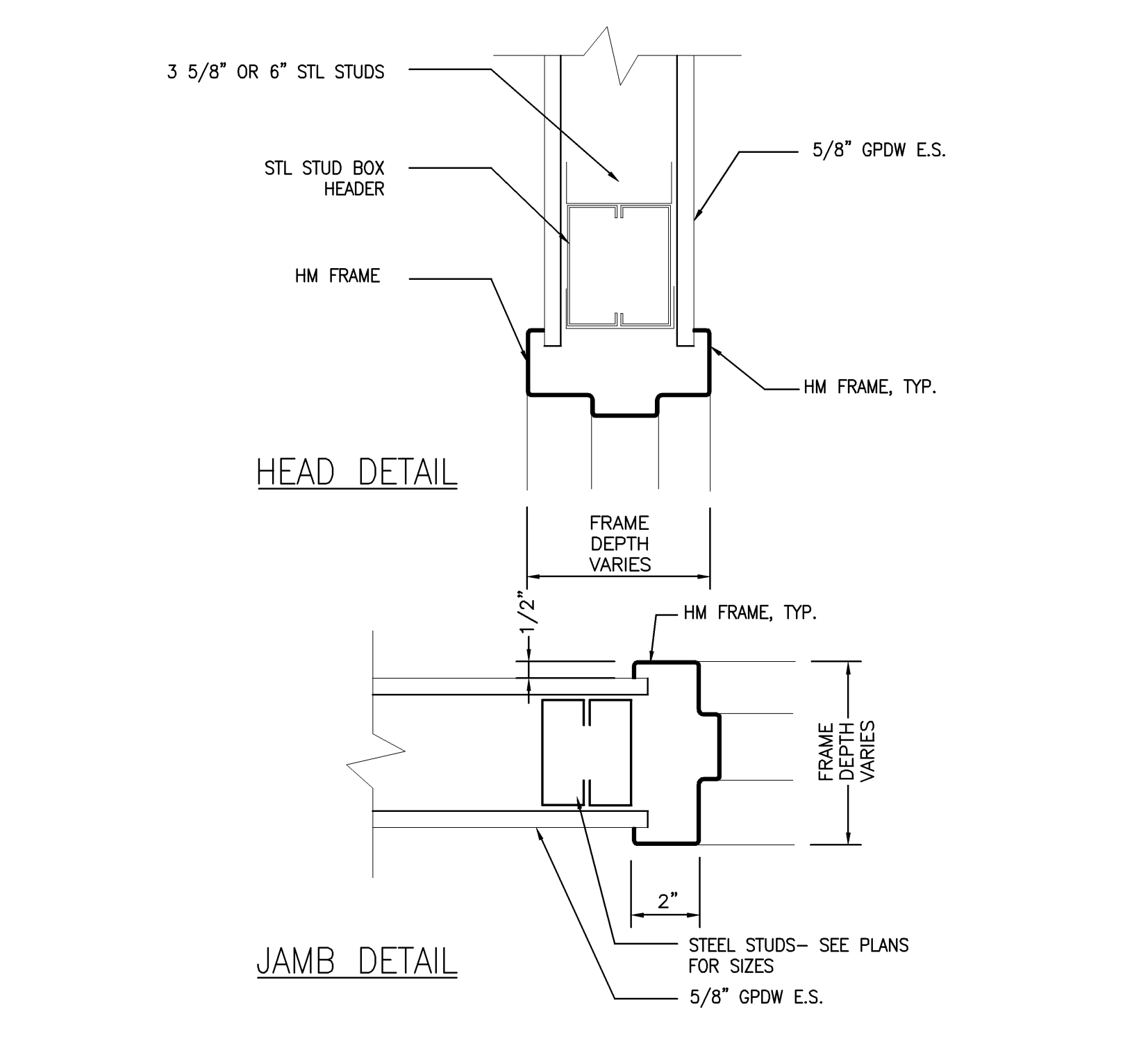
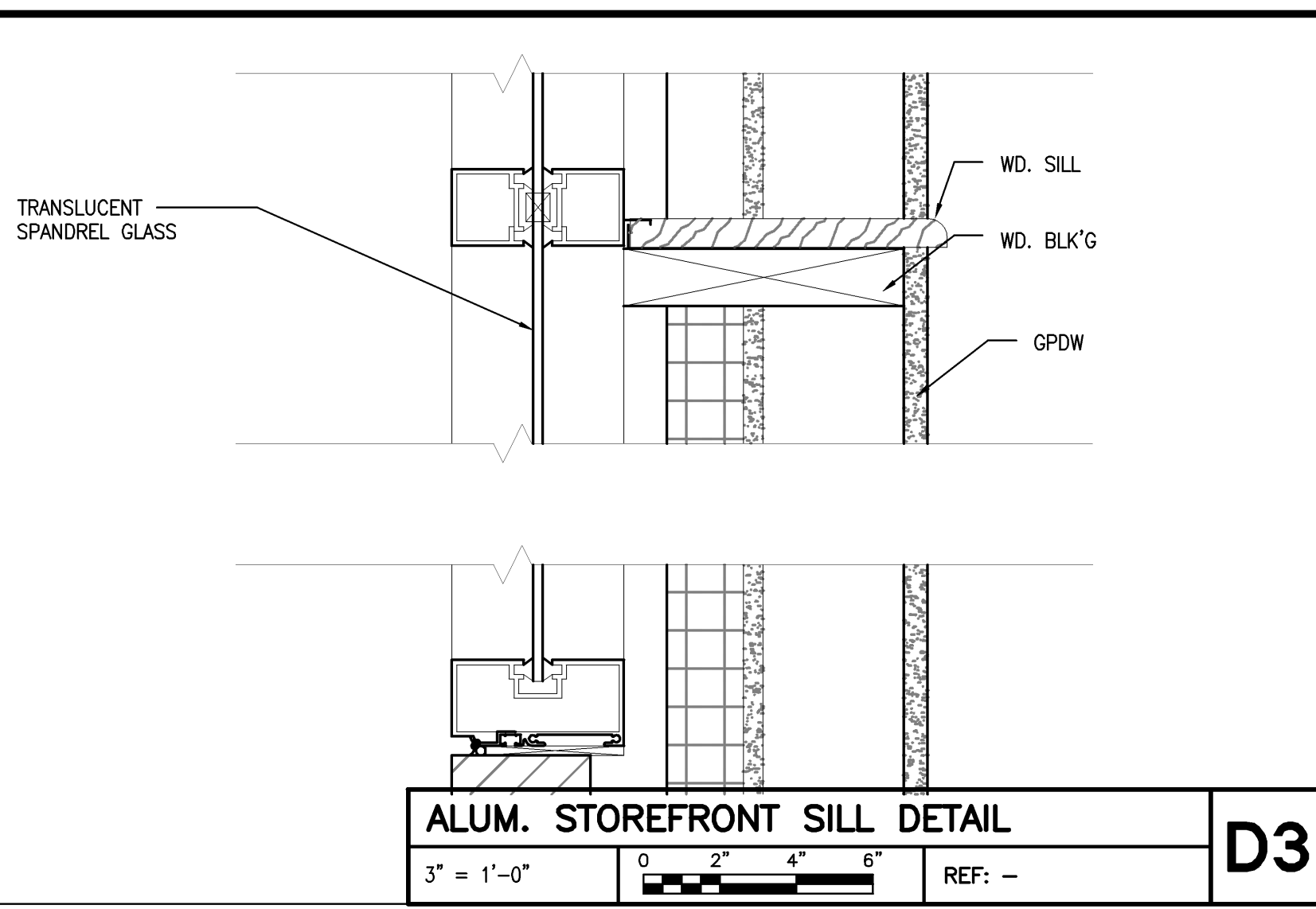
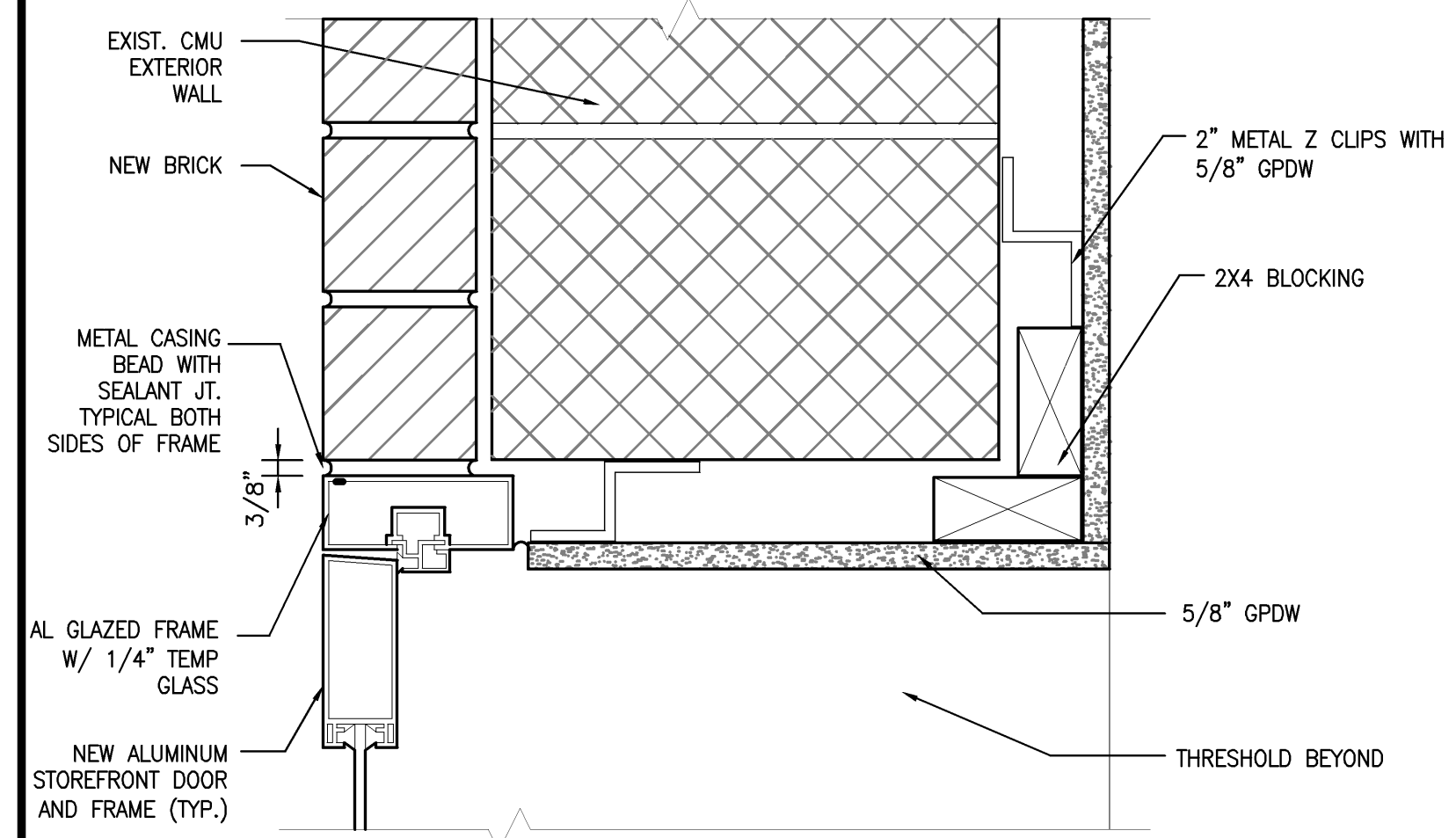


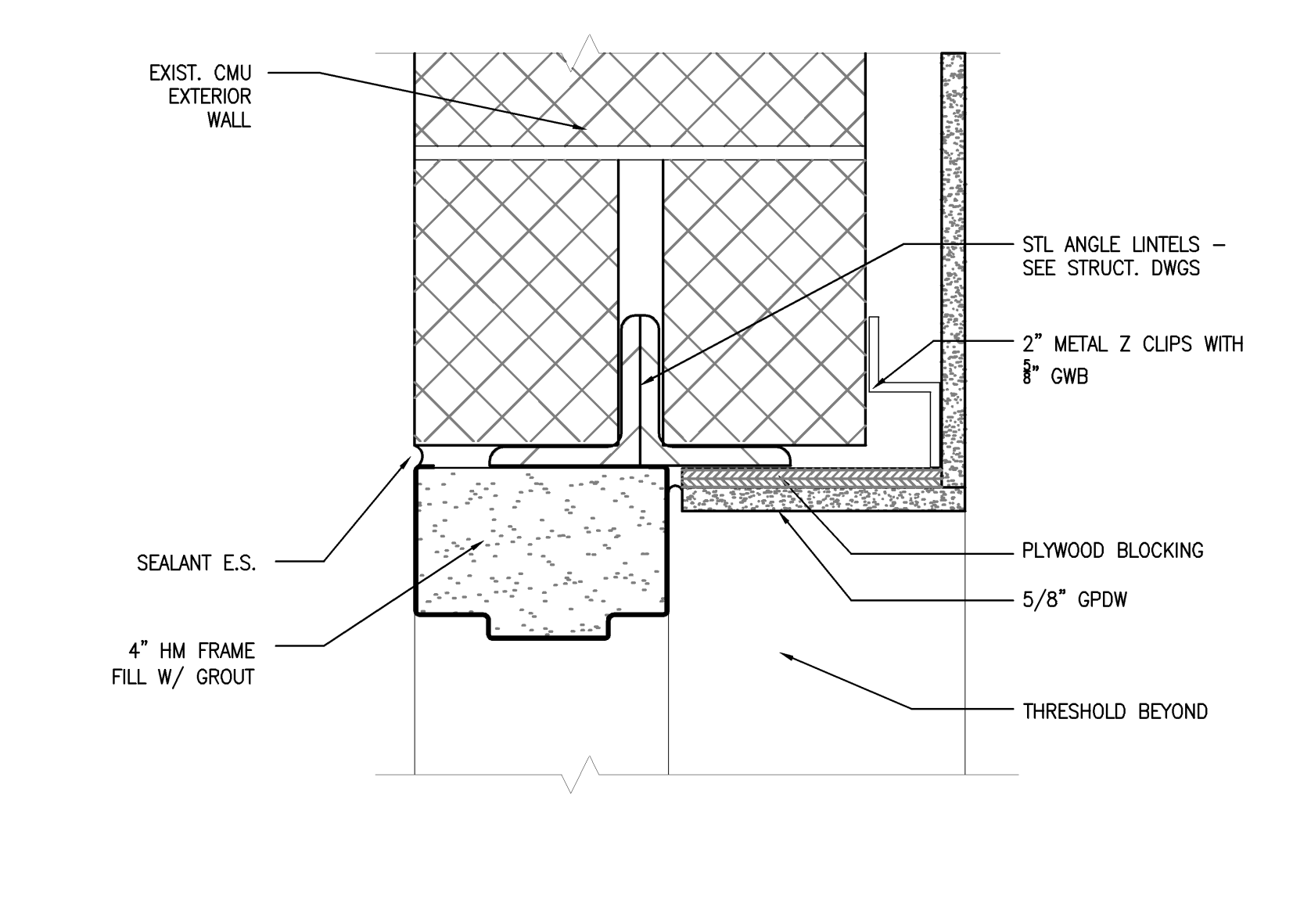
EXTERIOR ALUM. DOOR JAMB & SIDELIGHT
3" = 1'-0" REF: --



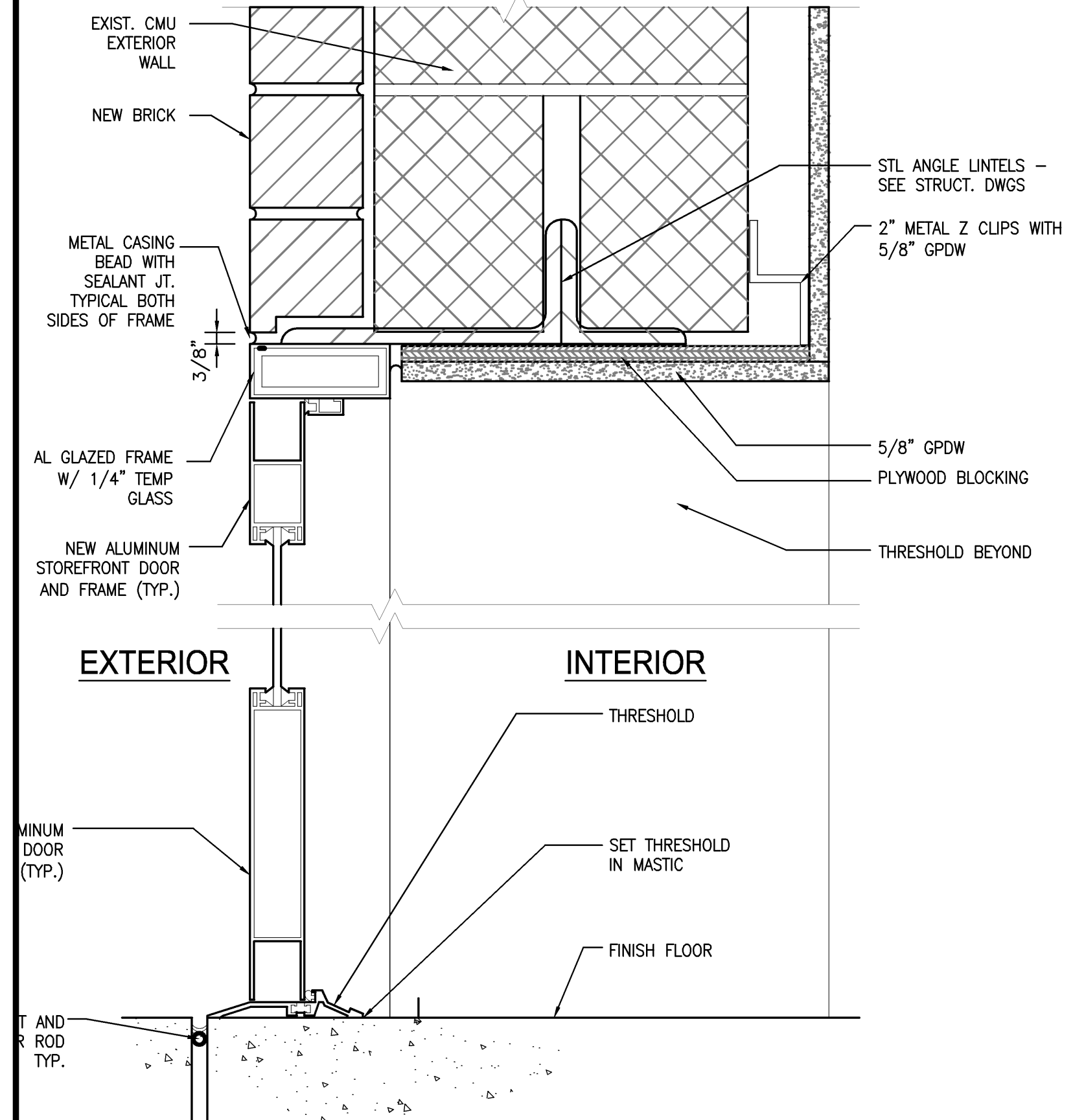
INTERIOR HOLLOW MTL. DOOR JAMB/HEAD
3" = 1'-0" REF: --



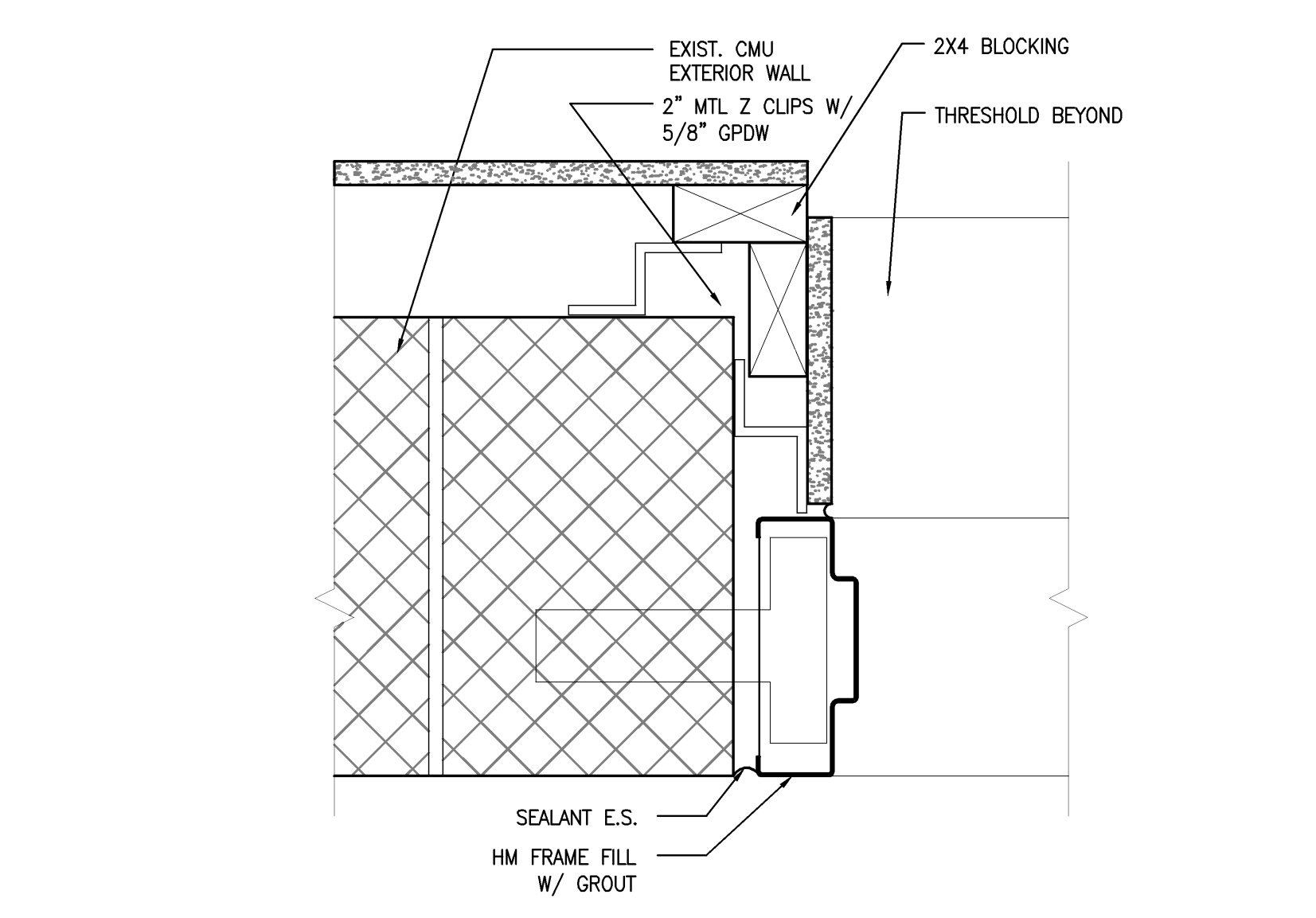
EXTERIOR ALUM. DOOR JAMB
3" = 1'-0" REF: --



EXTERIOR HOLLOW MTL. DOOR HEAD
3" = 1'-0" REF: --



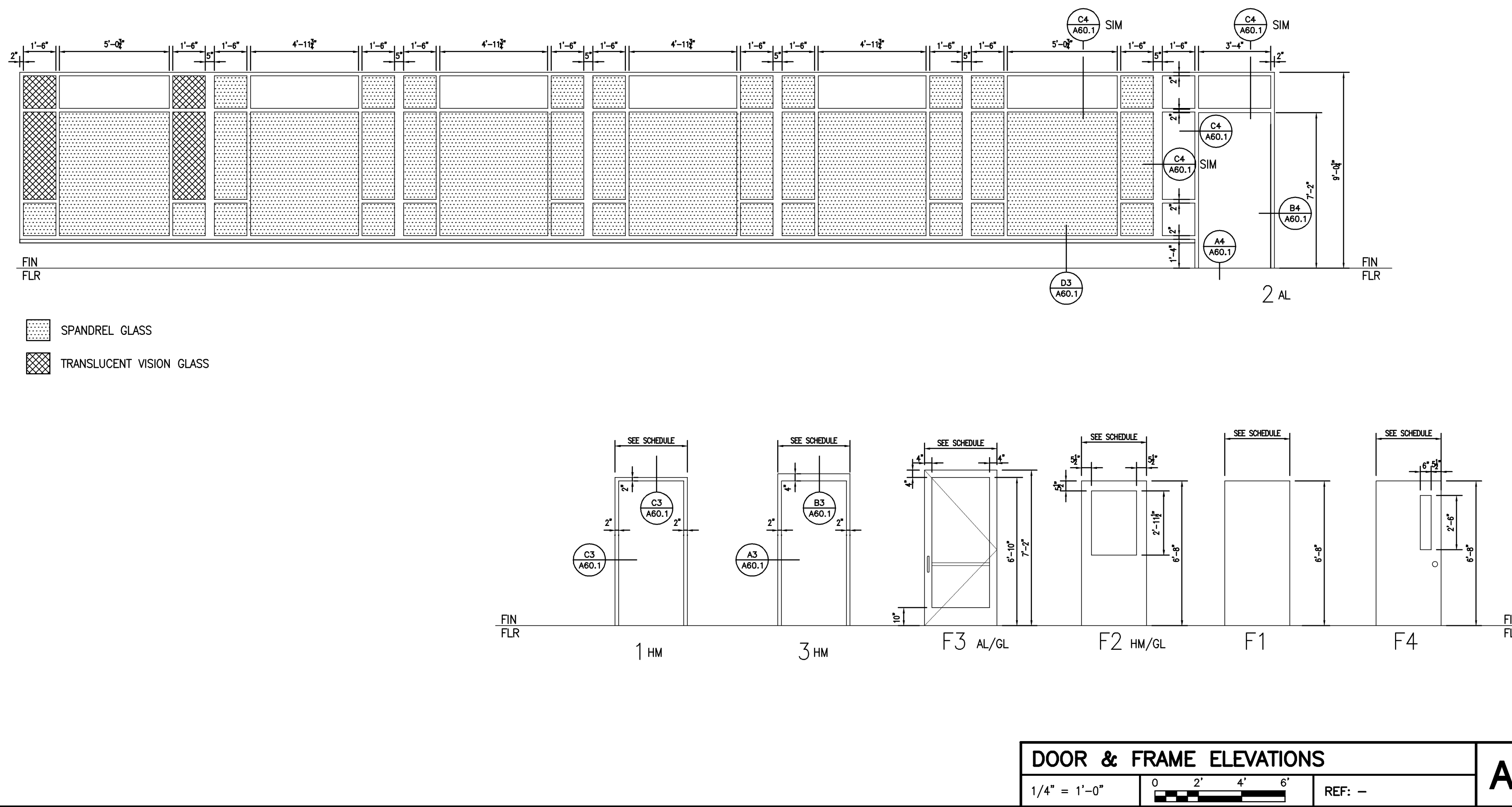
EXTERIOR ALUM. DOOR HEAD/SILL
3" = 1'-0" REF: --



EXTERIOR HOLLOW MTL. DOOR JAMB
3" = 1'-0" REF: --

Door & Frame Schedule

NO.	DOOR			FRAME		FIRE RATING LABEL	HW SET NO	NOTES				
	SIZE	MATL	TYPE	GLAZ	DETAIL							
	WD	HGT	THK									
101	3'-4"	7'-0"	1 3/4"	AL/GL	F3	TEMP	AL	2	A4/A60.1 B4/A60.1	---	---	Automatic opener - push paddle
102	3'-2"	7'-0"	1 3/4"	WD	F1	---	HM	1	C3/A60.1 C3/A60.1	---	---	
103	3'-2"	7'-0"	1 3/4"	WD	F1	---	HM	1	C3/A60.1 C3/A60.1	---	---	
104	3'-2"	7'-0"	1 3/4"	WD	F1	---	HM	1	C3/A60.1 C3/A60.1	---	---	
105	3'-2"	7'-0"	1 3/4"	WD	F4	TEMP	HM	1	C3/A60.1 C3/A60.1	---	---	
106	3'-2"	7'-0"	1 3/4"	WD	F1	---	HM	1	C3/A60.1 C3/A60.1	---	---	
107	3'-2"	7'-0"	1 3/4"	WD	F1	---	HM	1	C3/A60.1 C3/A60.1	---	---	
108	3'-2"	7'-0"	1 3/4"	WD	F1	---	HM	1	C3/A60.1 C3/A60.1	---	---	
109	3'-2"	7'-0"	1 3/4"	WD	F1	---	HM	1	C3/A60.1 C3/A60.1	---	---	
110	3'-2"	7'-0"	1 3/4"	WD	F1	---	HM	1	C3/A60.1 C3/A60.1	---	---	
111	3'-0"	7'-0"	1 3/4"	WD	F1	---	HM	1	C3/A60.1 C3/A60.1	---	---	
112	2'-6"	7'-0"	1 3/4"	WD	F1	---	HM	1	C3/A60.1 C3/A60.1	---	---	
113	3'-0"	7'-0"	1 3/4"	WD	F1	---	HM	1	C3/A60.1 C3/A60.1	---	---	
114	3'-2"	7'-0"	1 3/4"	WD	F1	---	HM	1	C3/A60.1 C3/A60.1	---	---	
115	3'-0"	7'-0"	1 3/4"	WD	F1	---	HM	1	C3/A60.1 C3/A60.1	---	---	
116	3'-0"	7'-0"	1 3/4"	WD	F1	---	HM	1	C3/A60.1 C3/A60.1	---	---	
117	3'-0"	7'-0"	1 3/4"	WD	F1	---	HM	1	C3/A60.1 C3/A60.1	---	---	
118	3'-0"	7'-0"	1 3/4"	WD	F1	---	HM	1	C3/A60.1 C3/A60.1	---	---	
119	3'-0"	7'-0"	1 3/4"	WD	F1	---	HM	1	C3/A60.1 C3/A60.1	---	---	
120	3'-0"	7'-0"	1 3/4"	WD	F1	---	HM	1	C3/A60.1 C3/A60.1	---	---	
122	3'-0"	7'-0"	1 3/4"	WD	F1	---	HM	1	C3/A60.1 C3/A60.1	---	---	
123	5'-0"	7'-0"	1 3/4"	WD	F1	---	HM	1	C3/A60.1 C3/A60.1	---	---	
124	3'-0"	7'-0"	1 3/4"	WD	F4	---	HM	1	C3/A60.1 B3/A60.1	---	---	
125	3'-0"	7'-0"	1 3/4"	WD	F1	---	HM	1	C3/A60.1 C3/A60.1	---	---	
126	3'-0"	7'-0"	1 3/4"	WD	F1	---	HM	1	C3/A60.1 C3/A60.1	---	---	
127	3'-0"	7'-0"	1 3/4"	WD	F1	---	HM	1	C3/A60.1 C3/A60.1	---	---	
128	3'-0"	7'-0"	1 3/4"	WD	F1	---	HM	1	C3/A60.1 C3/A60.1	---	---	
130	3'-2"	7'-0"	1 3/4"	WD	F1	---	HM	1	C3/A60.1 C3/A60.1	---	---	
133	3'-2"	7'-0"	1 3/4"	WD	F1	---	HM	1	C3/A60.1 C3/A60.1	---	---	
134	3'-2"	7'-0"	1 3/4"	WD	F1	---	HM	1	C3/A60.1 C3/A60.1	---	---	
135	3'-2"	7'-0"	1 3/4"	WD	F1	---	HM	1	C3/A60.1 C3/A60.1	---	---	
136	3'-2"	7'-0"	1 3/4"	WD	F1	---	HM	1	C3/A60.1 C3/A60.1	---	---	
137	3'-2"	7'-0"	1 3/4"	WD	F1	---	HM	1	C3/A60.1 C3/A60.1	---	---	
138	3'-2"	7'-0"	1 3/4"	WD	F1	---	HM	1	C3/A60.1 C3/A60.1	---	---	
139	3'-2"	7'-0"	1 3/4"	WD	F1	---	HM	1	C3/A60.1 C3/A60.1	---	---	
140	4'-0"	7'-0"	1 3/4"	HM	F2	---	HM	2	A3/A60.1 B3/A60.1	---	---	Card reader
141	2'-8"	7'-0"	1 3/4"	WD	F1	---	HM	1	C3/A60.1 C3/A60.1	---	---	
142	3'-2"	7'-0"	1 3/4"	WD	F1	---	HM	1	C3/A60.1 C3/A60.1	---	---	
143	3'-0"	7'-0"	1 3/4"	HM	F2	---	HM	2	A3/A60.1 B3/A60.1	---	---	
144	3'-2"	7'-0"	1 3/4"	WD	F1	---	HM	1	C3/A60.1 C3/A60.1	---	---	
145	3'-0"	7'-0"	1 3/4"	WD	F1	---	HM	1	C3/A60.1 C3/A60.1	---	---	
146A	3'-0"	7'-0"	1 3/4"	WD	F4	---	HM	1	C3/A60.1 C3/A60.1	---	---	
146B	3'-0"	7'-0"	1 3/4"	WD	F4	---	HM	1	C3/A60.1 C3/A60.1	---	---	
148	5'-0"	7'-0"	1 3/4"	WD	F1	---	HM	1	C3/A60.1 B3/A60.1	---	---	
149	3'-2"	7'-0"	1 3/4"	WD	F1	---	HM	1	C3/A60.1 C3/A60.1	---	---	
153	3'-2"	7'-0"	1 3/4"	WD	F1	---	HM	1	C3/A60.1 C3/A60.1	---	---	
154	3'-2"	7'-0"	1 3/4"	WD	F1	---	HM	1	C3/A60.1 C3/A60.1	---	---	
155	3'-2"	7'-0"	1 3/4"	WD	F1	---	HM	1	C3/A60.1 C3/A60.1	---	---	
156	3'-2"	7'-0"	1 3/4"	WD	F1	---	HM	1	C3/A60.1 C3/A60.1	---	---	
157	3'-2"	7'-0"	1 3/4"	WD	F1	---	HM	1	C3/A60.1 C3/A60.1	---	---	
159	3'-2"	7'-0"	1 3/4"	WD	F1	---	HM	1	C3/A60.1 C3/A60.1	---	---	
160	3'-0"	7'-0"	1 3/4"	SS	F4	---	SS	3	XX/A60.1 XX/A60.1	---	---	G.C. To re-locate exist. S.S. Door & frame
161	3'-0"	7'-0"	1 3/4"	WD	F1	---	HM	1	C3/A60.1 C3/A60.1	---	---	
162	3'-0"	7'-0"	1 3/4"	WD	F1	---	HM	1	C3/A60.1 C3/A60.1	---	---	
163	3'-0"	7'-0"	1 3/4"	WD	F1	---	HM	1	C3/A60.1 C3/A60.1	---	---	
164	3'-2"	7'-0"	1 3/4"	WD	F1	---	HM	1	C3/A60.1 C3/A60.1	---	---	
165	3'-0"	7'-0"	1 3/4"	WD	F1	---	HM	1	C3/A60.1 C3/A60.1	---	---	
166	2'-8"	7'-0"	1 3/4"	WD	F1	---	HM	1	C3/A60.1 C3/A60.1	---	---	



DOOR & FRAME SCHEDULE
NTS REF: --

HARRIMAN
Architects + Engineers
One Auburn Business Park
Auburn, Maine 04219
207.784.5100 tel
207.782.3017 fax
66 Pearl St., Suite 301
Beverly, Maine 04101
207.775.0053 tel
207.775.0460 fax
www.harriman.com
© 2007

Project Title
MERCY HEALTH CENTER
WESTGATE PLAZA
PORTLAND, MAINE
HA Project No. **07182**
Key Plan

07/08/08	ADDENDUM	
07/01/08	ISSUED FOR PERMIT	
06/26/08	100% REVIEW SET	
Mark	Date	Description
Issue	Dates	

Drawing Title
DOOR & FRAME SCHEDULE, ELEVATIONS & DETAILS
PA / PE: PSC Drawn By: JGJ
Drawing Number
A60.1