

- Consultant
CIVIL ENGINEER
 Deluca-Hoffman Associates, Inc.
 778 Main Street, Suite 8
 South Portland, ME 04106
 Phone: (207) 775-1121
 Fax: (207) 879-0896
- Consultant
ASSOCIATE ARCHITECT/STRUCTURAL ENGINEER
 SMRT
 144 Fore Street P.O. Box 618
 Portland, Maine 04104
 Phone: (207) 772-3846
 Fax: (207) 772-1070
- Consultant
MECHANICAL/ELECTRICAL ENGINEER
 Bord, Rao + Athanas Consulting Engineers, LLC
 The Arsenal on the Chertle
 311 Arsenal Street
 Watertown, MA 02472-5789
 Phone: 617.254.0016
 Fax: 617.924.9339
- Consultant
EQUIPMENT PLANNING
 Gene Burton & Associates
 1893 General George Patton Drive
 Franklin, Tennessee 37067
 Phone: (615) 376-3100
 Fax: (615) 376-3114
- Consultant
CONSTRUCTION MANAGER
 Gilbane Building Company
 7 Jackson Walkway
 Providence, Rhode Island 02903
 Phone: (401) 456-5905
 Fax: (401) 456-5516
- Consultant
FOOD SERVICE
 Inman Foodservice, LLC
 1808 West End Ave, Suite 1400
 Nashville, TN 37203
 Phone: (615) 321-5591
 Fax: (615) 321-5689

It is the responsibility of the Construction Manager/General Contractor and all Sub-Contractors to verify all dimensions and accept conditions of prior work by related trades before proceeding with any work.

Date
 11/10/06 Final-Issued for Construct
 Drawn By

Scale
 1/8" = 1'-0"

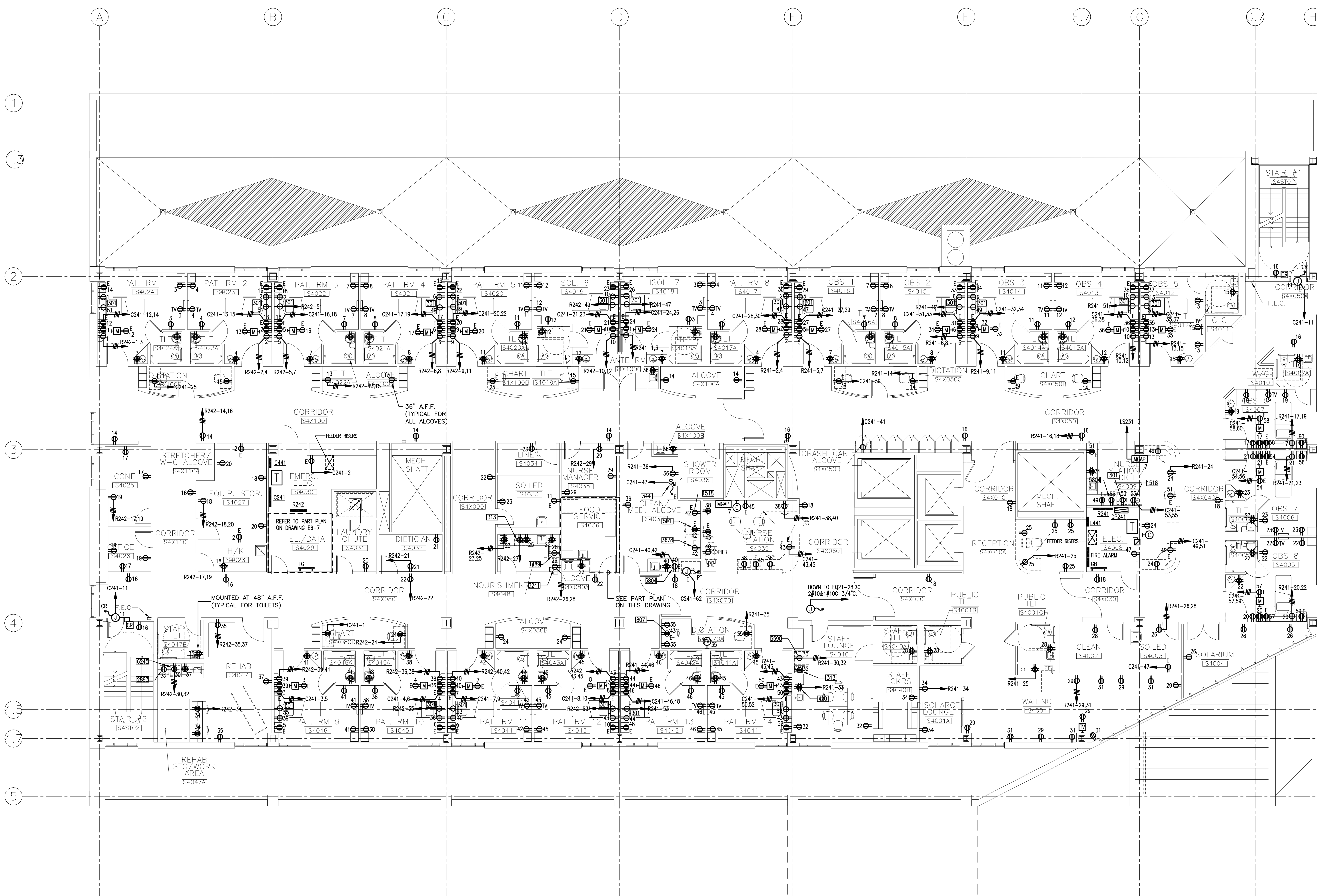
Francis
 Cauffman
 Foley
 Hoffmann

Francis Cauffman 2120 Arch Street
 Foley Hoffmann Philadelphia, PA 19103
 Architects Ltd. 215-568-8250

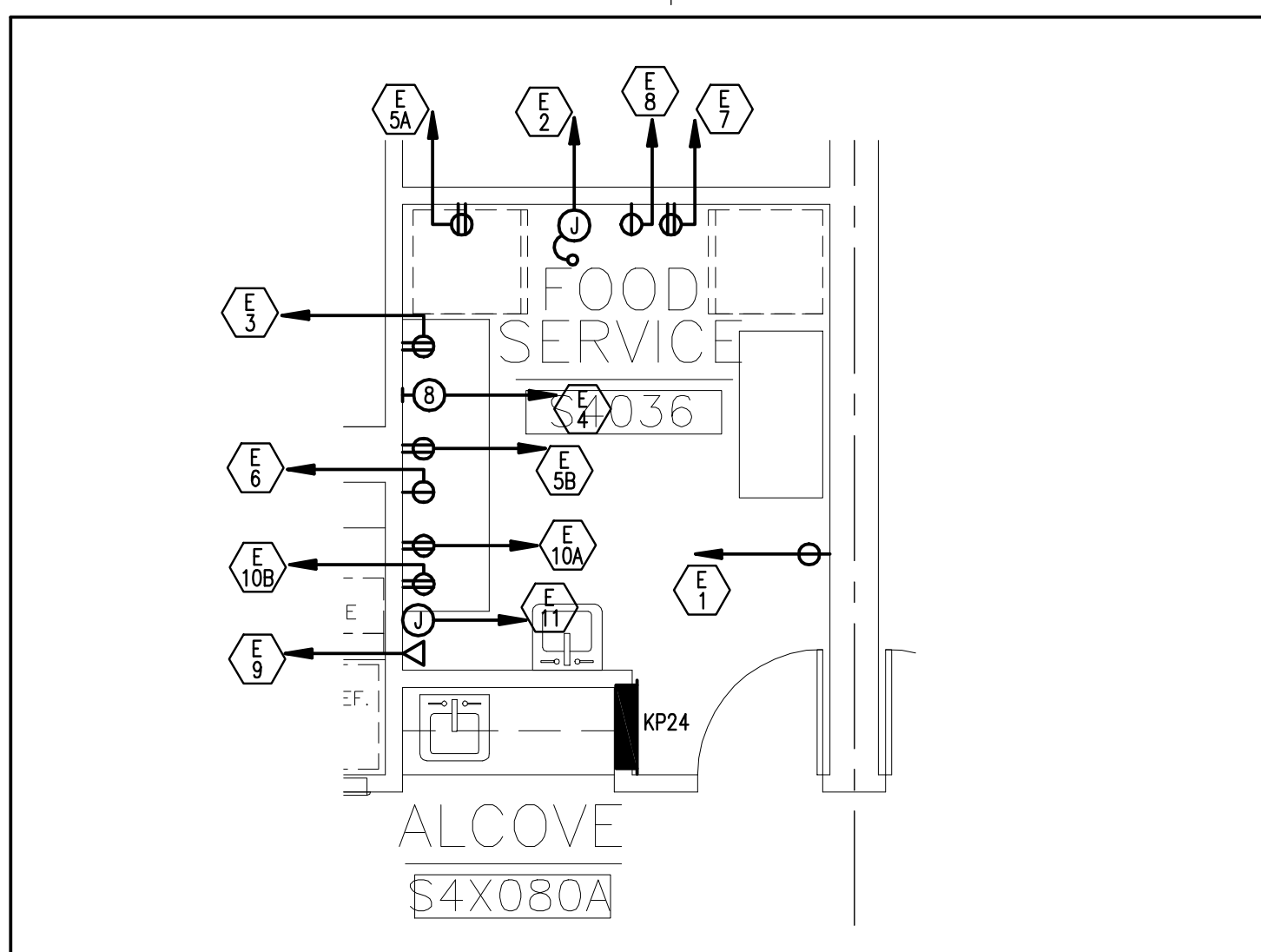
Project Title
 Mercy Health Care
 System of Maine
 FORE RIVER SHORT
 STAY HOSPITAL



Project Number
 F05-4898
 Drawing Title and Number
 ELECTRICAL
 POWER PLAN
 LEVEL 4



FOOD SERVICE S4036--SCHEDULE OF EQUIPMENT							INDICATES SHUNT TRIP BREAKER CONNECT TO HOOD SUPPRESSION SYSTEM			
ITEM	DESCRIPTION	LOAD HP	LOAD KW	AMP	VOLTAGE	CIRCUIT BREAKER	CONNECTION PLUG-IN DIRECT	PANEL/CIRCUIT (ST)	FEEDER & CONDUIT	NOTES
E1	REFRIGERATOR/FREEZER	1/5-1/3	-	14A	120V	20A-1P	●	C241-76	2#12 & 1#12G-3/4"	
E2	ICE/WATER DISPENSER	-	-	12A	120V	20A-1P	●	C241-78	2#12 & 1#12G-3/4"	
E3	ICED TEA BREWER	-	-	15A	120V	20A-1P	●	KP24-1	2#12 & 1#12G-3/4"	
E4	COFFEE BREWER	-	-	30A	120/208-1P	30A-2P	●	KP24-2,4	3#10 & 1#10G-3/4"	
E5A	CONVENIENCE OUTLET	-	-	16A	120V	20A-1P	●	KP24-3	2#12 & 1#12G-3/4"	
E5B	CONVENIENCE OUTLET	-	-	16A	120V	20A-1P	●	KP24-5	2#12 & 1#12G-3/4"	
E6	MICROWAVE OVEN	-	1.2	10.0A	120V	20A-1P	●	KP24-7	2#12 & 1#12G-3/4"	
E7	SODA DISPENSER	-	-	10A	120V	20A-1P	●	KP24-9	2#12 & 1#12G-3/4"	
E8	AMBIENT CARBONATOR	-	-	7A	120V	20A-1P	●	KP24-11	2#12 & 1#12G-3/4"	
REFER TO COMMUNICATION DRAWINGS										
E10A	CONVENIENCE OUTLET	-	-	16A	120V	20A-1P	●	KP24-6	2#12 & 1#12G-3/4"	
E10B	CONVENIENCE OUTLET	-	-	16A	120V	20A-1P	●	KP24-8	2#12 & 1#12G-3/4"	
E11	E.C TO PROVIDE EMPTY CONDUIT W/JUNCTION BOX FOR OWNER SUPPLIED POS/COMPUTER SYSTEM. VERIFY REQUIREMENTS AND LOCATION WITH OWNER/ARCH.									



NOTES:
 1. FOR KITCHEN EQUIPMENT EXACT LOCATION, MOUNTING HEIGHTS AND CONNECTIONS REQUIREMENTS, REFER TO KITCHEN CONSULTANT "MANAN FOODSERVICES GROUP" DOCUMENTS.

FOOD SERVICE S3041 PART PLAN-POWER 1/4"=1'-0"