

Consultant  
 CIVIL ENGINEER  
 DeLuca-Hoffman Associates, Inc.  
 778 Main Street, Suite 8  
 South Portland, ME 04106  
 Phone: (207) 775-1121  
 Fax: (207) 879-0896

Consultant  
 ASSOCIATE ARCHITECT/STRUCTURAL ENGINEER  
 SMRT  
 144 Fore Street P.O. Box 618  
 Portland, Maine 04104  
 Phone: (207) 772-3846  
 Fax: (207) 772-1070

Consultant  
 MECHANICAL/ELECTRICAL ENGINEER  
 Bard, Rao + Athanas Consulting Engineers, LLC  
 The Arsenal on the Charles  
 311 Arsenal Street  
 Watertown, MA 02472-5789  
 Phone: 617.254.0016  
 Fax: 617.924.9339

Consultant  
 EQUIPMENT PLANNING  
 Gene Burton & Associates  
 1893 General George Patton Drive  
 Franklin, Tennessee 37067  
 Phone: (615) 376-3100  
 Fax: (615) 376-3114

Consultant  
 CONSTRUCTION MANAGER  
 Gilbane Building Company  
 7 Jackson Walkway  
 Providence, Rhode Island 02903  
 Phone: (401) 456-5905  
 Fax: (401) 456-5516

Consultant  
 FOOD SERVICE  
 Inman Foodservice, LLC  
 1808 West End Ave, Suite 1400  
 Nashville, TN 37203  
 Phone: (615) 321-5591  
 Fax: (615) 321-5688

It is the responsibility of the Construction Manager/General Contractor and all Sub-Contractors to verify all dimensions and accept conditions of prior work by related trades before proceeding with any work.

Date  
 11/10/06 Final-Issued for Constructi  
 Drawn By

Scale  
 1/8" = 1'-0"

Francis

Cauffman

Foley

Hoffmann

Francis Cauffman 2120 Arch Street  
 Foley Hoffmann Philadelphia, PA 19103  
 Architects Ltd. 215-568-8250

Project Title

Mercy Health Care  
 System of Maine

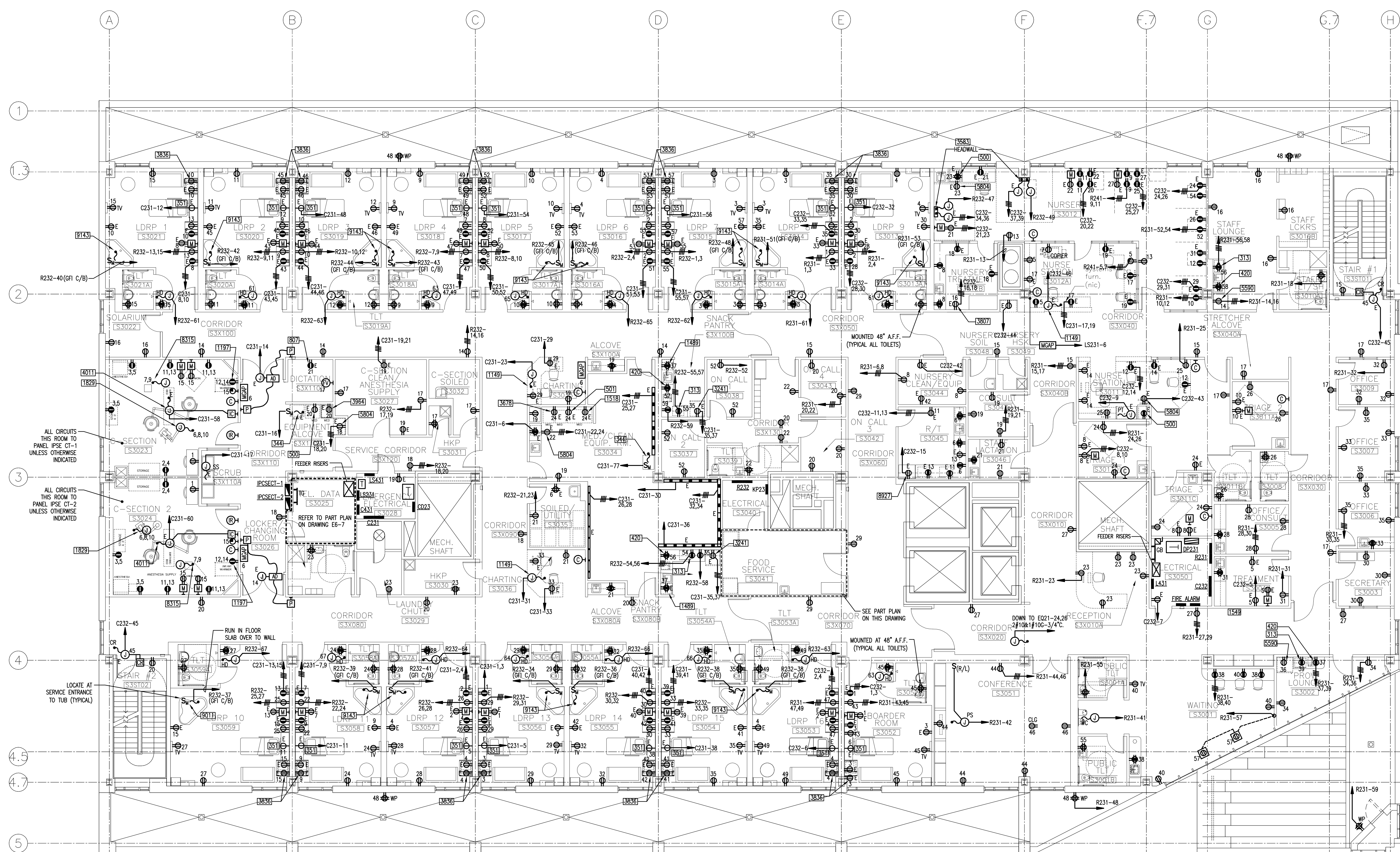
FORE RIVER SHORT  
 STAY HOSPITAL



Project Number  
 F05-4898

Drawing Title and Number  
 ELECTRICAL  
 POWER PLAN  
 LEVEL 3

E1-3

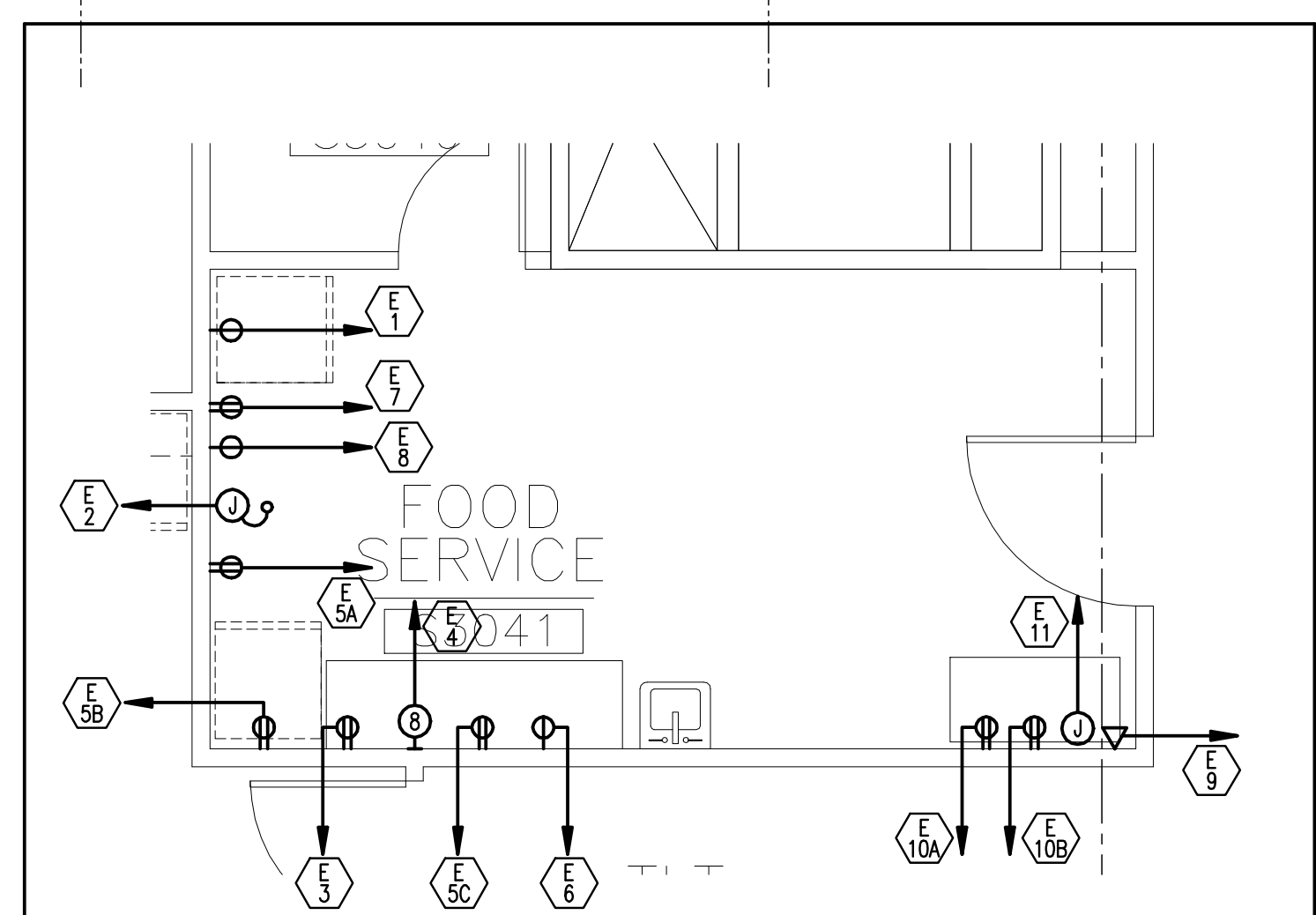


ALL CIRCUITS  
 THIS ROOM TO  
 PANEL RISE CT-1  
 UNLESS OTHERWISE  
 INDICATED

ALL CIRCUITS  
 THIS ROOM TO  
 PANEL RISE CT-2  
 UNLESS OTHERWISE  
 INDICATED

LOCATE AT  
 SERVICE ENTRANCE  
 TO TUB (TYPICAL)

FOOD SERVICE S3041-SCHEDULE OF EQUIPMENT										
ITEM	DESCRIPTION	LOAD HP	LOAD KW	AMP	VOLTAGE	CIRCUIT BREAKER	CONNECTION PLUG-IN DIRECT	PANEL/ CIRCUIT (ST)	FEEDER & CONDUIT	NOTES
E1	REFRIGERATOR/FREEZER	1/5-1/3	-	14A	120V	20A-1P	●	C231-76	2#12 & 1#126-3/4"	
E2	ICE/WATER DISPENSER	-	-	12A	120V	20A-1P	●	C231-78	2#12 & 1#126-3/4"	
E3	ICED TEA BREWER	-	-	15A	120V	30A-1P	●	KP23-1	2#12 & 1#126-3/4"	
E4	COFFEE BREWER	-	-	30A	120/208-1φ	30A-2P	●	KP23-2,4	3#10 & 1#106-3/4"	
ESA	CONVENIENCE OUTLET	-	-	16A	120V	20A-1P	●	KP23-3	2#12 & 1#126-3/4"	
ESB	CONVENIENCE OUTLET	-	-	16A	120V	20A-1P	●	KP23-5	2#12 & 1#126-3/4"	
ESC	CONVENIENCE OUTLET	-	-	16A	120V	20A-1P	●	K23-10	2#12 & 1#126-3/4"	
E6	MICROWAVE OVEN	-	1.2	10A	120V	20A-1P	●	KP23-7	2#12 & 1#126-3/4"	
E7	SODA DISPENSER	-	-	10A	120V	20A-1P	●	KP23-9	2#12 & 1#126-3/4"	
E8	AMBIENT CARBONATOR	-	-	7A	120V	20A-1P	●	KP23-11	2#12 & 1#126-3/4"	
E9	REFER TO COMMUNICATION DRAWINGS									
E10A	CONVENIENCE OUTLET	-	-	16A	120V	20A-1P	●	KP23-6	2#12 & 1#126-3/4"	
E10B	CONVENIENCE OUTLET	-	-	16A	120V	20A-1P	●	KP23-8	2#12 & 1#126-3/4"	
E11	E.C. TO PROVIDE EMPTY CONDUIT W/JUNCTION BOX FOR OWNER SUPPLIED POS/COMPUTER SYSTEM. VERIFY REQUIREMENTS AND LOCATION WITH OWNER/ARCH.									



NOTES:  
 1. FOR KITCHEN EQUIPMENT EXACT LOCATION, MOUNTING HEIGHTS AND CONNECTIONS REQUIREMENTS, REFER TO KITCHEN CONSULTANT "INMAN FOODSERVICES GROUP" DOCUMENTS.

FOOD SERVICE S3041 PART PLAN-POWER 1/4"=1'-0"