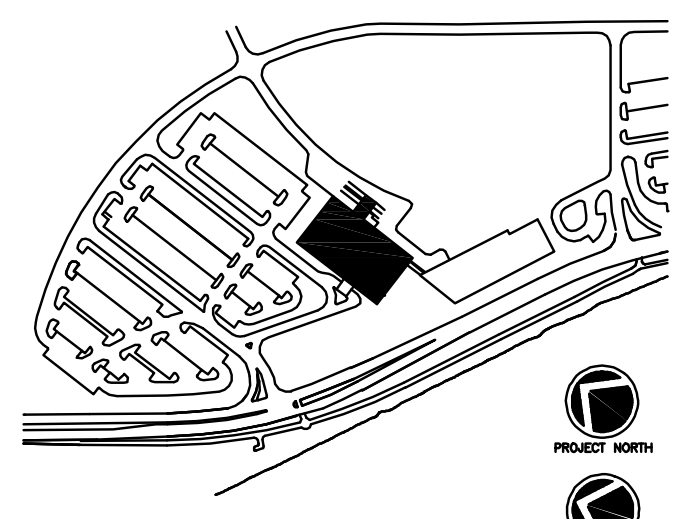
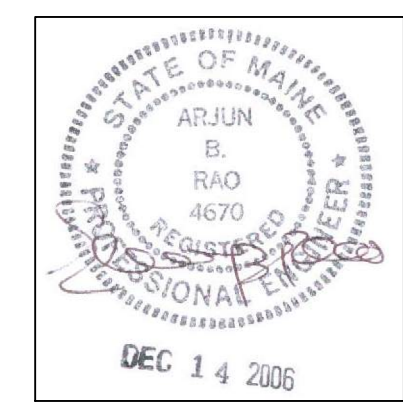


KEY NOTES:

1 IN ADDITION TO THE POWER INDICATED IN THESE ROOMS, ELECTRICAL CONTRACTOR SHALL REFER TO MANUFACTURERS INSTALLATION DRAWINGS FOR EQUIPMENT INCLUDING BUT NOT LIMITED TO WIRING, LIGHTS, DOOR INTERLOCKS, EPO'S, POWER AND CONTROL WIRING, CONDUIT, ETC. FOR A COMPLETE INSTALLATION.



Consultant
CIVIL ENGINEER
 DeLucco-Hoffman Associates, Inc.
 778 Main Street, Suite 8
 South Portland, ME 04106
 Phone: (207) 775-1121
 Fax: (207) 879-0896

Consultant
ASSOCIATE ARCHITECT/STRUCTURAL ENGINEER
 SMRT
 144 Fore Street P.O. Box 618
 Portland, Maine 04104
 Phone: (207) 772-3846
 Fax: (207) 772-1070

Consultant
MECHANICAL/ELECTRICAL ENGINEER
 The Arsenal on the Charles
 311 Arsenal Street
 Watertown, MA 02472-5789
 Phone: 617-254-0016
 Fax: 617-924-9339

Consultant
EQUIPMENT PLANNING
 Gene Burton & Associates
 1893 General George Patton Drive
 Franklin, Tennessee 37067
 Phone: (615) 376-3100
 Fax: (615) 376-3114

Consultant
CONSTRUCTION MANAGER
 Gilbane Building Company
 7 Jackson Walkway
 Providence, Rhode Island 02903
 Phone: (401) 456-5905
 Fax: (401) 456-5516

Consultant
FOOD SERVICE
 Inman Foodservice, LLC
 1808 West End Ave, Suite 1400
 Nashville, TN 37203
 Phone: (615) 321-5591
 Fax: (615) 321-5689

It is the responsibility of the Construction Manager/General Contractor and all Sub-Contractors to verify all dimensions and accept conditions of prior work by related trades before proceeding with any work.

Date
 11/10/06 Final-Issued for Construct
 Drawn By

Scale
 1/8" = 1'-0"

Francis
 Cauffman
 Foley
 Hoffmann

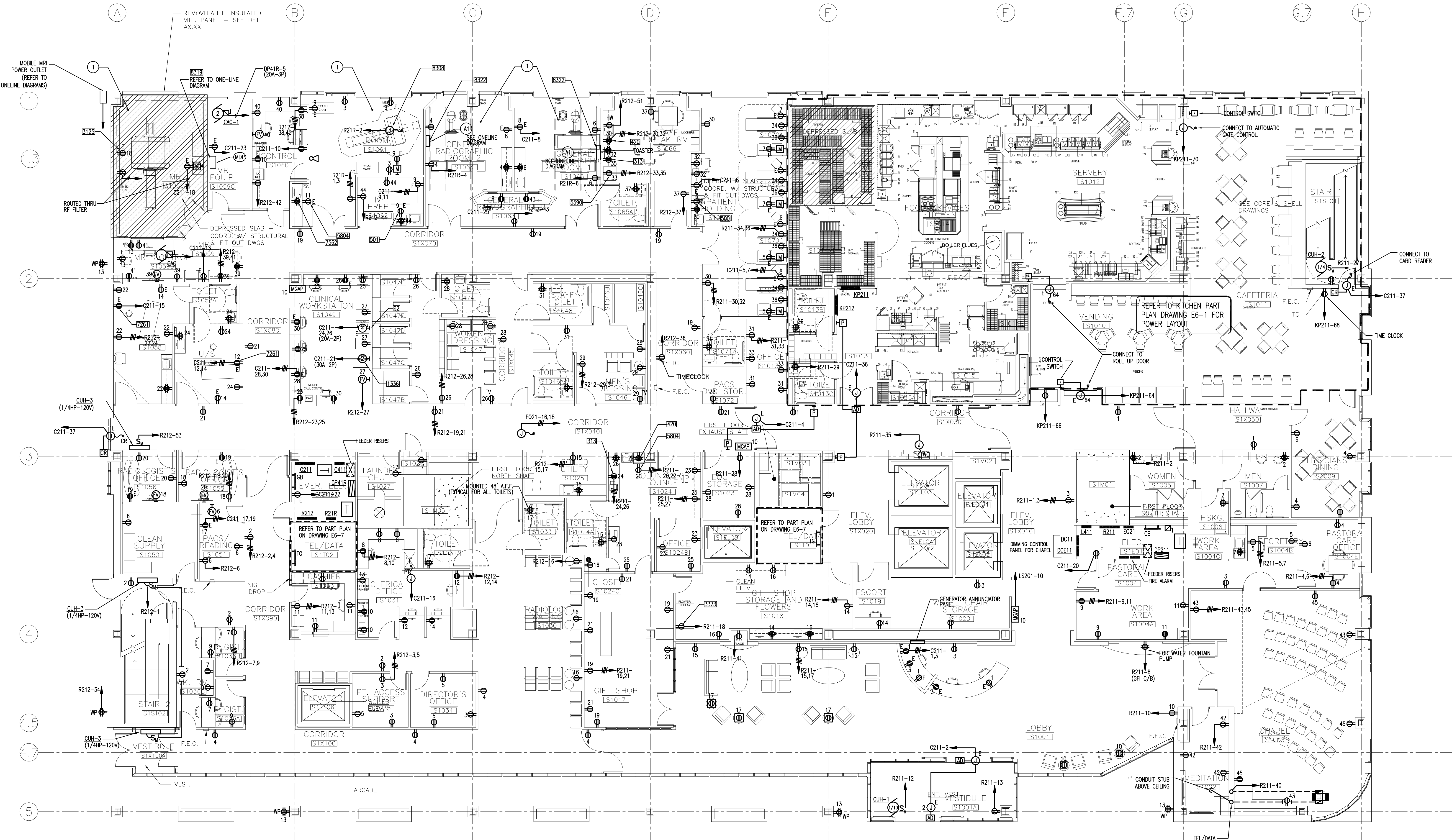
Francis Cauffman 2120 Arch Street
 Foley Hoffmann Philadelphia, PA 19103
 Architects Ltd. 215-568-8250

Project Title
 Mercy Health Care
 System of Maine
 FORE RIVER SHORT
 STAY HOSPITAL



Project Number
 F05-4898
 Drawing Title and Number
 ELECTRICAL
 POWER PLAN
 LEVEL 1

E1-1



1 FIRST FLOOR PLAN
 A1.01 1/8" = 1'-0"

J:\JOBS\2523000\DWG\ELEC\ONE-PWR-LEVEL 1.DWG 11-08-2006 11:19:11 - DLW