

Consultant
CIVIL ENGINEER
 DeLuca-Hoffman Associates, Inc.
 778 Main Street, Suite 8
 South Portland, ME 04106
 Phone: (207) 775-1121
 Fax: (207) 879-0896

Consultant
ASSOCIATE ARCHITECT/STRUCTURAL ENGINEER
 SMRT
 144 Fore Street P.O. Box 618
 Portland, Maine 04104
 Phone: (207) 772-3846
 Fax: (207) 772-1070

Consultant
MECHANICAL/ELECTRICAL ENGINEER
 Gene Burton & Associates
 The Arsenal on the Clarks
 311 Arsenal Street
 Watertown, MA 02472-5789
 Phone: (615) 376-3100
 Fax: (615) 376-3114

Consultant
EQUIPMENT PLANNING
 Gene Burton & Associates
 1893 General George Patton Drive
 Franklin, Tennessee 37067
 Phone: (615) 376-3100
 Fax: (615) 376-3114

Consultant
CONSTRUCTION MANAGER
 Gilbane Building Company
 7 Jackson Walkway
 Providence, Rhode Island 02903
 Phone: (401) 456-5905
 Fax: (401) 456-5516

Consultant
FOOD SERVICE
 Inman Foodservice, LLC
 1808 West End Ave, Suite 1400
 Nashville, TN 37203
 Phone: (615) 321-5591
 Fax: (615) 321-5689

It is the responsibility of the Construction Manager/General Contractor and all Sub-Contractors to verify all dimensions and accept conditions of prior work by related trades before proceeding with any work.

Date
 11/10/06 Final-Issued for Construction
 Drawn By

Scale
 1/8" = 1'-0"

**Francis
 Cauffman
 Foley
 Hoffmann**

Francis Cauffman 2120 Arch Street
 Foley Hoffmann Philadelphia, PA 19103
 Architects Ltd. 215-568-8250

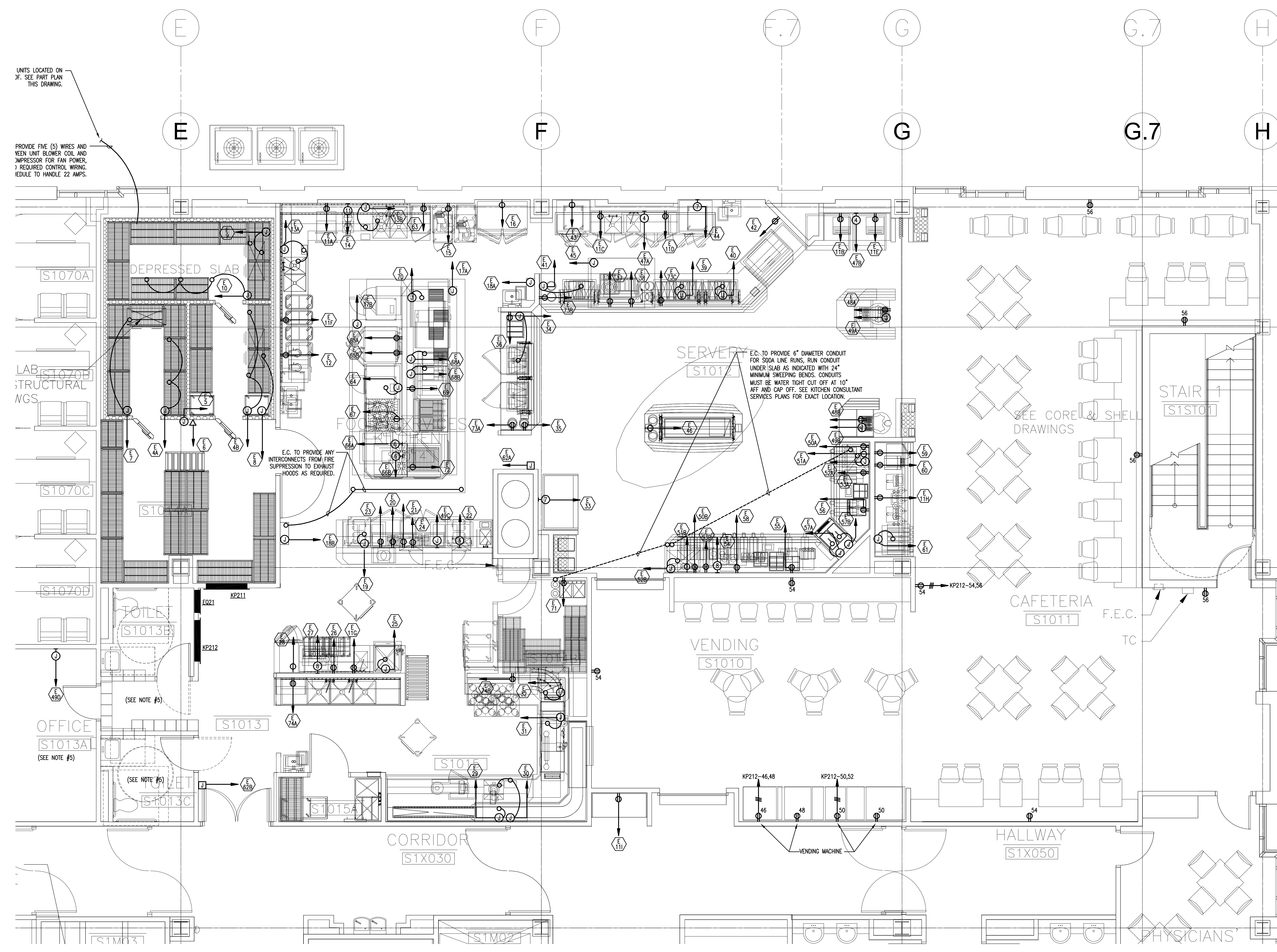
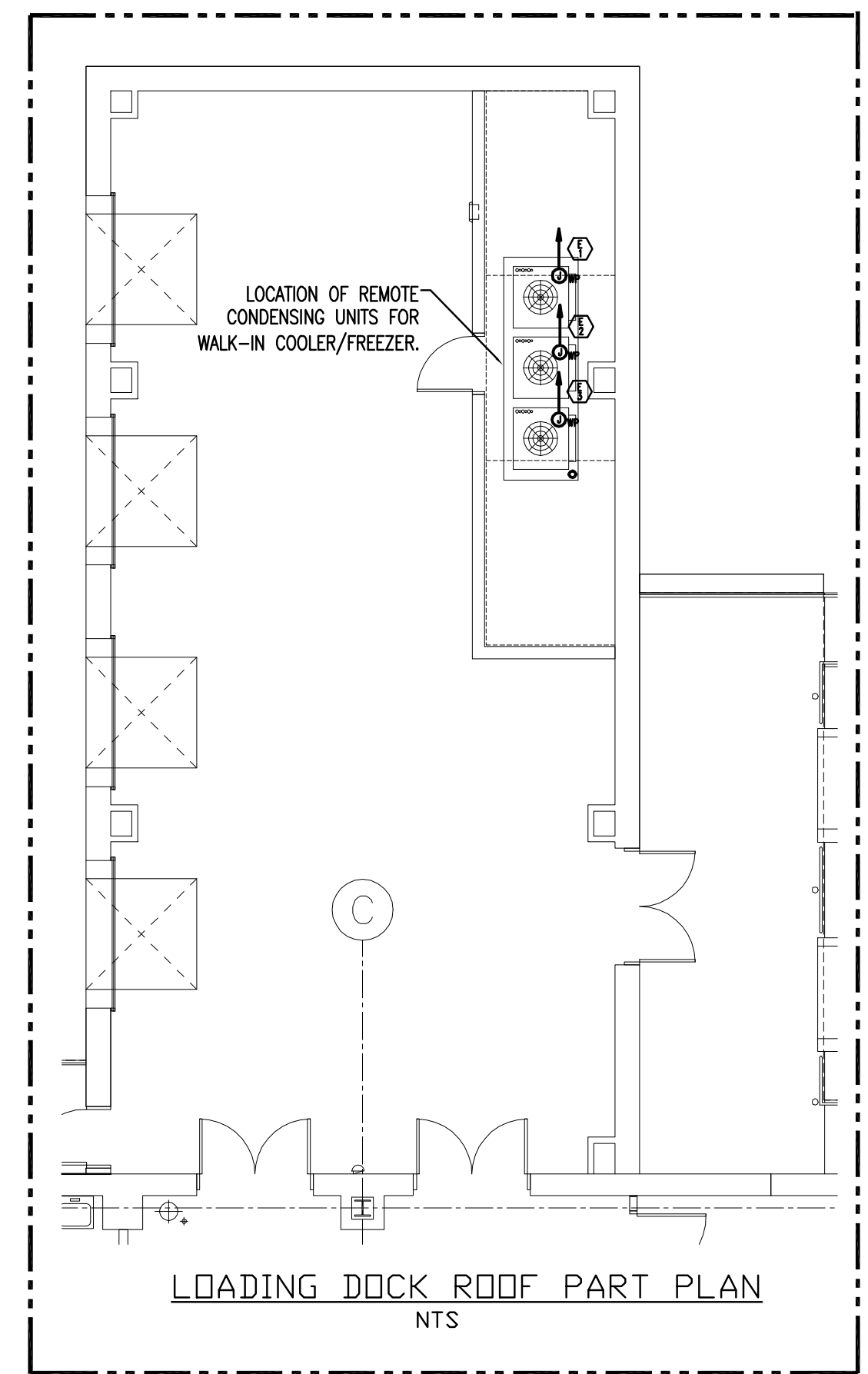
Project Title

Mercy Health Care
 System of Maine
 FORE RIVER SHORT
 STAY HOSPITAL



Project Number
 F05-4898

Drawing Title and Number
 ELECTRICAL
 PARTIAL
 KITCHEN PLAN
E6-1



- NOTES:
- FOR SYMBOLS AND GENERAL NOTES REFER TO DRAWING ED-0.
 - FOR KITCHEN EQUIPMENT SCHEDULE REFER TO DRAWING ES-6.
 - FOR KITCHEN EQUIPMENT EXACT LOCATION, MOUNTING HEIGHTS AND CONNECTIONS REQUIREMENTS, REFER TO KITCHEN CONSULTANT "INMAN FOODSERVICES GROUP" DOCUMENTS.
 - FOR KITCHEN FIRE ALARM REQUIREMENTS REFER TO LEVEL 1 FIRE ALARM PLAN DRAWING E3-1.
 - FOR ADDITIONAL POWER REQUIREMENTS REFER TO LEVEL 1 POWER PLAN DRAWING E1-1.

J:\JOBS\25230000\DWG\ELECTRICAL\KITCHEN\PART PLAN KITCHEN.DWG 11-03-2006 08:15:09 - jfr