

Consultant  
CIVIL ENGINEER  
DeLuca-Hoffman Associates, Inc.  
778 Main Street, Suite 8  
South Portland, ME 04106  
Phone: (207) 775-1121  
Fax: (207) 879-0896

Consultant  
ASSOCIATE ARCHITECT/STRUCTURAL ENGINEER  
SMRT  
144 Fore Street P.O. Box 618  
Portland, Maine 04104  
Phone: (207) 772-3846  
Fax: (207) 772-1070

Consultant  
MECHANICAL/ELECTRICAL ENGINEER  
The Arsenal on the Charles  
311 Arsenal Street  
Watertown, MA 02472-5789  
Phone: 617.254.0016  
Fax: 617.924.9339

Consultant  
EQUIPMENT PLANNING  
Gene Burton & Associates  
1893 General George Patton Drive  
Franklin, Tennessee 37067  
Phone: (615) 376-3100  
Fax: (615) 376-3114

Consultant  
CONSTRUCTION MANAGER  
Gibbons Building Company  
7 Jackson Walkway  
Providence, Rhode Island 02903  
Phone: (401) 456-5905  
Fax: (401) 456-5516

Consultant  
FOOD SERVICE  
Inman Foodservice, LLC  
1808 West End Ave, Suite 1400  
Nashville, TN 37203  
Phone: (615) 321-5591  
Fax: (615) 321-5689

It is the responsibility of the Construction Manager/General Contractor and all Sub-Contractors to verify all dimensions and accept conditions of prior work by related trades before proceeding with any work.

Date  
11/10/06 Final-Issued for Construction  
Drawn By

Scale  
1/8" = 1'-0"

Francis

Cauffman

Foley

Hoffmann

Francis Cauffman 2120 Arch Street  
Foley Hoffmann Philadelphia, PA 19103  
Architects Ltd. 215-568-8250

Project Title

Mercy Health Care System of Maine

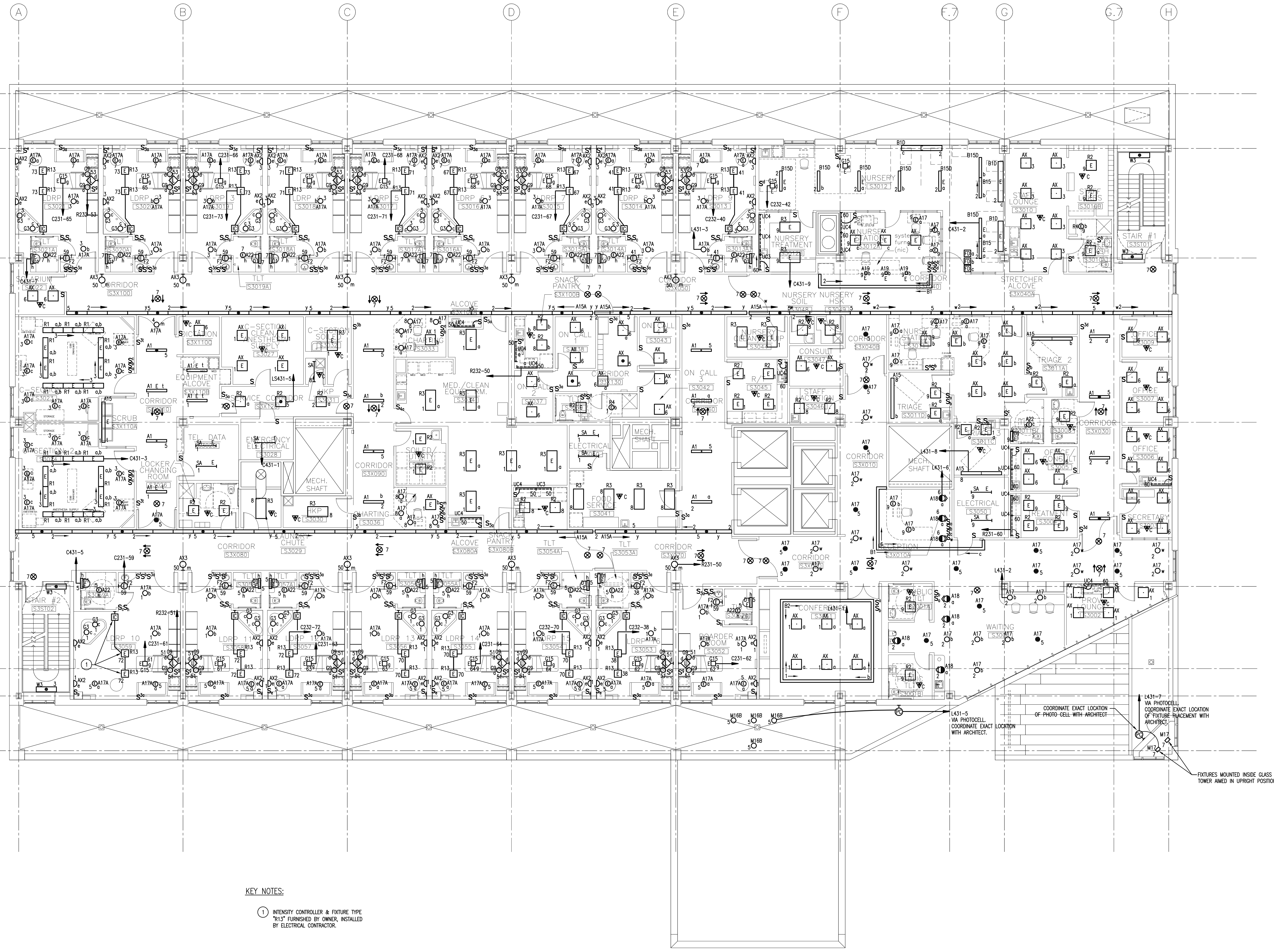
FORE RIVER SHORT STAY HOSPITAL



Project Number  
F05-4898

Drawing Title and Number  
ELECTRICAL LIGHTING PLAN LEVEL 3

E2-3



KEY NOTES:  
① INTENSITY CONTROLLER & FIXTURE TYPE "R13" FURNISHED BY OWNER, INSTALLED BY ELECTRICAL CONTRACTOR.