

Consultant
 CIVIL ENGINEER
 DeLuca-Hoffman Associates, Inc.
 776 Main Street, Suite 8
 South Portland, ME 04106
 Phone: (207) 775-1121
 Fax: (207) 879-0896

Consultant
 ASSOCIATE ARCHITECT/STRUCTURAL ENGINEER
 SMRT
 144 Fore Street P.O. Box 618
 Portland, Maine 04104
 Phone: (207) 772-3846
 Fax: (207) 772-1070

Consultant
 MECHANICAL/ELECTRICAL ENGINEER
 Bard, Roe + Athanas Consulting Engineers, LLC
 The Arsenal on the Charles
 311 Arsenal Street
 Watertown, MA 02472-5789
 Phone: (617) 376-3100
 Fax: (617) 924-9339

Consultant
 EQUIPMENT PLANNING
 Gene Burton & Associates
 1893 General George Patton Drive
 Franklin, Tennessee 37067
 Phone: (615) 376-3100
 Fax: (615) 376-3114

Consultant
 CONSTRUCTION MANAGER
 Silvano Building Company
 7 Jackson Walkway
 Providence, Rhode Island 02903
 Phone: (401) 456-5905
 Fax: (401) 456-5516

Consultant
 FOOD SERVICE
 Inman Foodservice, LLC
 1808 West End Ave, Suite 1400
 Nashville, TN 37203
 Phone: (615) 321-5591
 Fax: (615) 321-5689

It is the responsibility of the Construction Manager/General Contractor and all Sub-Contractors to verify all dimensions and accept conditions of prior work by related trades before proceeding with any work.

Date
 11/10/06 Final-Issued for Construction
 Drawn By

Scale
 1/8"=1'-0"

Francis

Cauffman

Foley

Hoffmann

Francis Cauffman 2120 Arch Street
 Foley Hoffmann Philadelphia, PA 19103
 Architects Ltd. 215-568-8250

Project Title

Mercy Health Care System of Maine

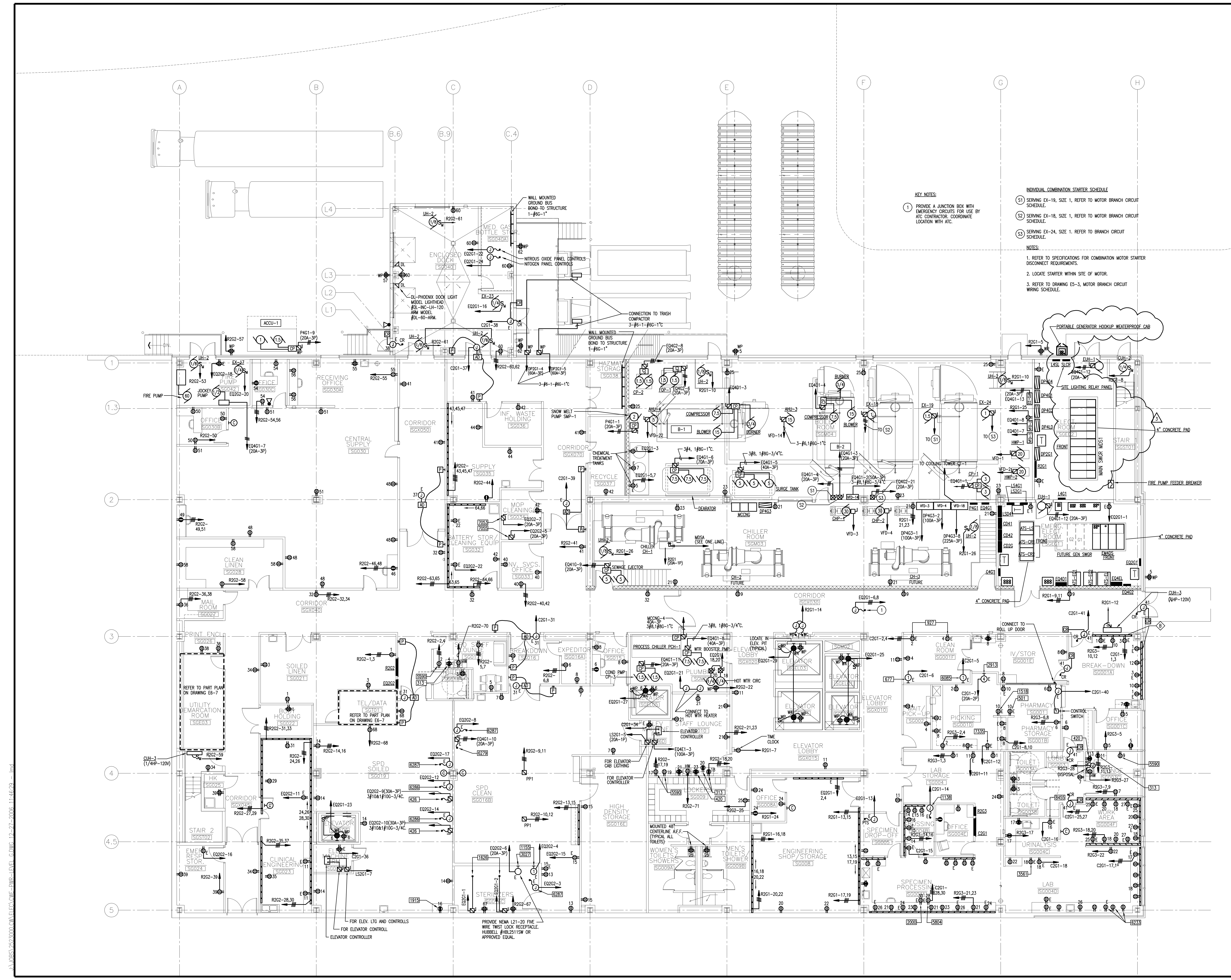
FORE RIVER SHORT STAY HOSPITAL



Project Number
 F05-4898

Drawing Title and Number
 ELECTRICAL POWER PLAN GROUND LEVEL

E1-G



KEY NOTES:
 1 PROVIDE A JUNCTION BOX WITH EMERGENCY CIRCUITS FOR USE BY ATC CONTRACTOR. COORDINATE LOCATION WITH ATC.

INDIVIDUAL COMBINATION STARTER SCHEDULE
 (S1) SERVING EX-19, SIZE 1, REFER TO MOTOR BRANCH CIRCUIT SCHEDULE.
 (S2) SERVING EX-18, SIZE 1, REFER TO MOTOR BRANCH CIRCUIT SCHEDULE.
 (S3) SERVING EX-24, SIZE 1. REFER TO BRANCH CIRCUIT SCHEDULE.

NOTES:
 1. REFER TO SPECIFICATIONS FOR COMBINATION MOTOR STARTER DISCONNECT REQUIREMENTS.
 2. LOCATE STARTER WITHIN SITE OF MOTOR.
 3. REFER TO DRAWING ES-3, MOTOR BRANCH CIRCUIT WIRING SCHEDULE.

J:\ALBERS\2528000\DWG\LEVEL_PWR_LEVEL_GROUND_12-27-2006-114692.dwg