

Consultant
 CIVIL ENGINEER
 DeLuca-Hoffman Associates, Inc.
 778 Main Street, Suite 8
 South Portland, ME 04106
 Phone: (207) 775-1121
 Fax: (207) 879-0896

Consultant
 ASSOCIATE ARCHITECT/STRUCTURAL ENGINEER
 SMRT
 144 Fore Street P.O. Box 618
 Portland, Maine 04104
 Phone: (207) 772-3846
 Fax: (207) 772-1070

Consultant
 MECHANICAL/ELECTRICAL ENGINEER
 Bord, Rao + Athanas Consulting Engineers, LLC
 The Arsenal on the Charles
 311 Arsenal Street
 Watertown, MA 02472-5789
 Phone: 617.254.0016
 Fax: 617.924.9339

Consultant
 EQUIPMENT PLANNING
 Gene Burton & Associates
 1893 General George Patton Drive
 Franklin, Tennessee 37067
 Phone: (615) 376-3100
 Fax: (615) 376-3114

Consultant
 CONSTRUCTION MANAGER
 Gilbane Building Company
 7 Jackson Walkway
 Providence, Rhode Island 02903
 Phone: (401) 456-5905
 Fax: (401) 456-5516

Consultant
 FOOD SERVICE
 Inman Foodservice, LLC
 1808 West End Ave, Suite 1400
 Nashville, TN 37203
 Phone: (615) 321-5591
 Fax: (615) 321-5689

It is the responsibility of the Construction Manager/General Contractor and all Sub-Contractors to verify all dimensions and accept conditions of prior work by related trades before proceeding with any work.

Date
 11/10/06 Final-Issued for Construction
 Drawn By

Scale
 NONE

Francis

Cauffman

Foley

Hoffmann

Francis Cauffman 2120 Arch Street
 Foley Hoffmann Philadelphia, PA 19103
 Architects Ltd. 215-568-8250

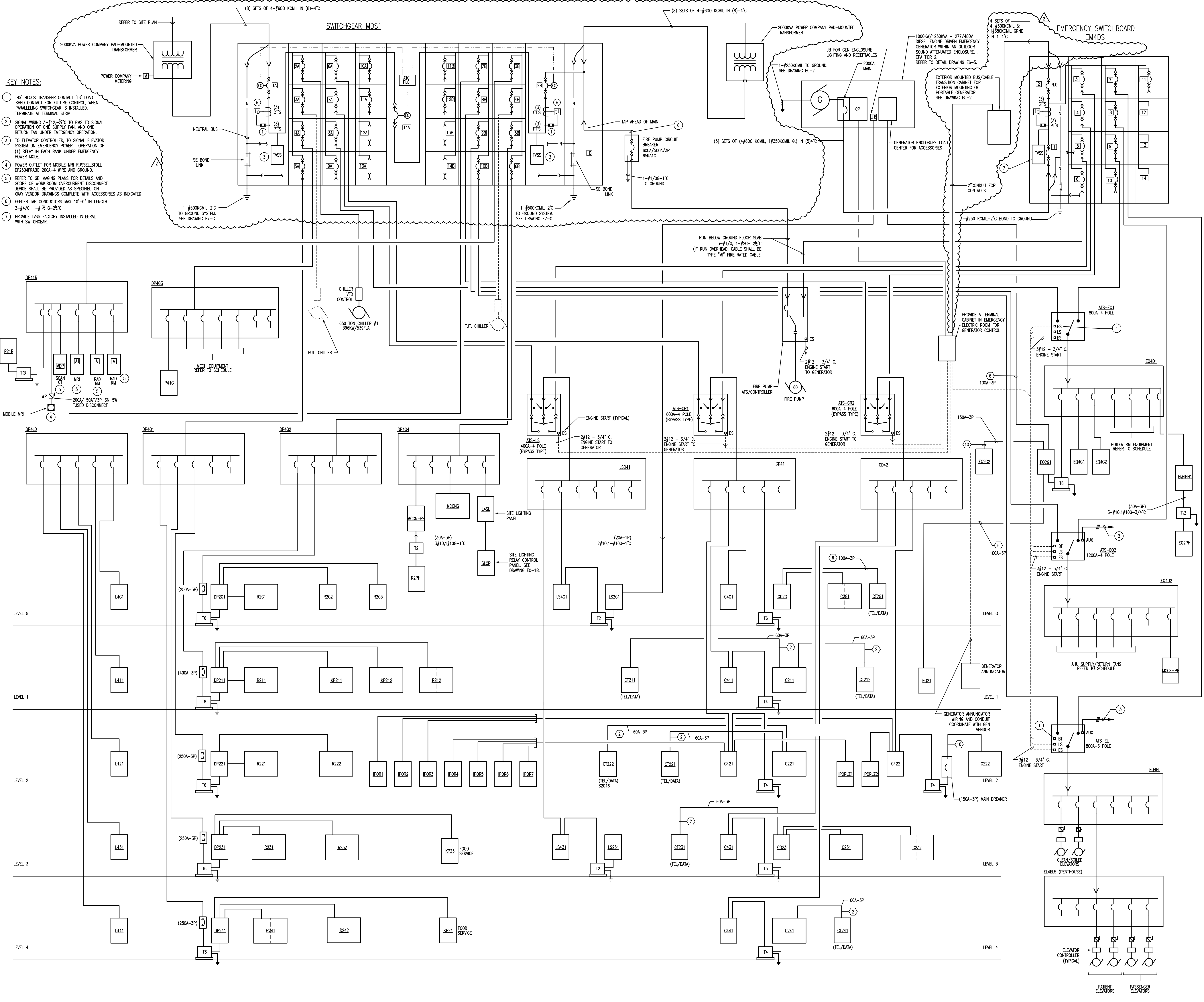
Project Title

Mercy Health Care
 System of Maine
 FORE RIVER SHORT
 STAY HOSPITAL



Project Number
 F05-4898
 Drawing Title and Number
 ELECTRICAL
 ONE-LINE
 DIAGRAM

E4-1



KEY NOTES:

1. 'BS' BLOCK TRANSFER CONTACT 'LS' LOAD SHED CONTACT FOR FUTURE CONTROL, WHEN PARALLELING SWITCHGEAR IS INSTALLED, TERMINATE AT TERMINAL STRIP.
2. SIGNAL WIRING 3-#12-34°C TO BUS TO SIGNAL OPERATION OF ONE SUPPLY FAN, AND ONE RETURN FAN UNDER EMERGENCY OPERATION.
3. TO ELEVATOR CONTROLLER, TO SIGNAL ELEVATOR SYSTEM ON EMERGENCY POWER. OPERATION OF (1) RELAY IN EACH BANK UNDER EMERGENCY POWER MODE.
4. POWER OUTLET FOR MOBILE MRI RUSSELLSTOLL DP2504FR4BD 200A-4 WIRE AND GROUND.
5. REFER TO CE IMAGING PLANS FOR DETAILS AND SCOPE OF WORK ROOM OVERCURRENT DISCONNECT DEVICE SHALL BE PROVIDED AS SPECIFIED ON XRAY VENDOR DRAWINGS COMPLETE WITH ACCESSORIES AS INDICATED.
6. FEEDER TAP CONDUCTORS MAX 10'-0" IN LENGTH. 3-#4/0, 1-# 8 G-28°C
7. PROVIDE TVSS FACTORY INSTALLED INTEGRAL WITH SWITCHGEAR.

J:\JOBS\2523000\ONE-LINE\ONE-LINE.DWG 12-27-2006 11:16:21 - lmd