

Consultant
 CIVIL ENGINEER
 DeLucco-Hoffman Associates, Inc.
 778 Main Street, Suite B
 South Portland, ME 04106
 Phone: (207) 775-1121
 Fax: (207) 879-0896

Consultant
 ASSOCIATE ARCHITECT/STRUCTURAL ENGINEER
 SMRT
 144 Fore Street P.O. Box 618
 Portland, Maine 04104
 Phone: (207) 772-3846
 Fax: (207) 772-1070

Consultant
 MECHANICAL/ELECTRICAL ENGINEER
 Bard, Rao + Athanas Consulting Engineers, LLC
 The Arsenal on the Charles
 311 Arsenal Street
 Watertown, MA 02472-5789
 Phone: 617.254.0016
 Fax: 617.924.9339

Consultant
 EQUIPMENT PLANNING
 Gene Burton & Associates
 1893 General George Patton Drive
 Franklin, Tennessee 37067
 Phone: (615) 376-3100
 Fax: (615) 376-3114

Consultant
 CONSTRUCTION MANAGER
 Gilbane Building Company
 7 Jackson Walkway
 Providence, Rhode Island 02903
 Phone: (401) 456-5905
 Fax: (401) 456-5516

Consultant
 FOOD SERVICE
 Inman Foodservice, LLC
 1808 West End Ave, Suite 1400
 Nashville, TN 37203
 Phone: (615) 321-5591
 Fax: (615) 321-5689

It is the responsibility of the Construction Manager/General Contractor and all Sub-Contractors to verify all dimensions and accept conditions of prior work by related trades before proceeding with any work.

Date
 11/10/06 Final-Issued for Construction

Drawn By
 XXX

Scale
 1"=60'-0"

Francis

Cauffman

Foley

Hoffmann

Francis Cauffman 2120 Arch Street Philadelphia, PA 19103
 Foley Hoffmann Architects Ltd. 215-568-8250

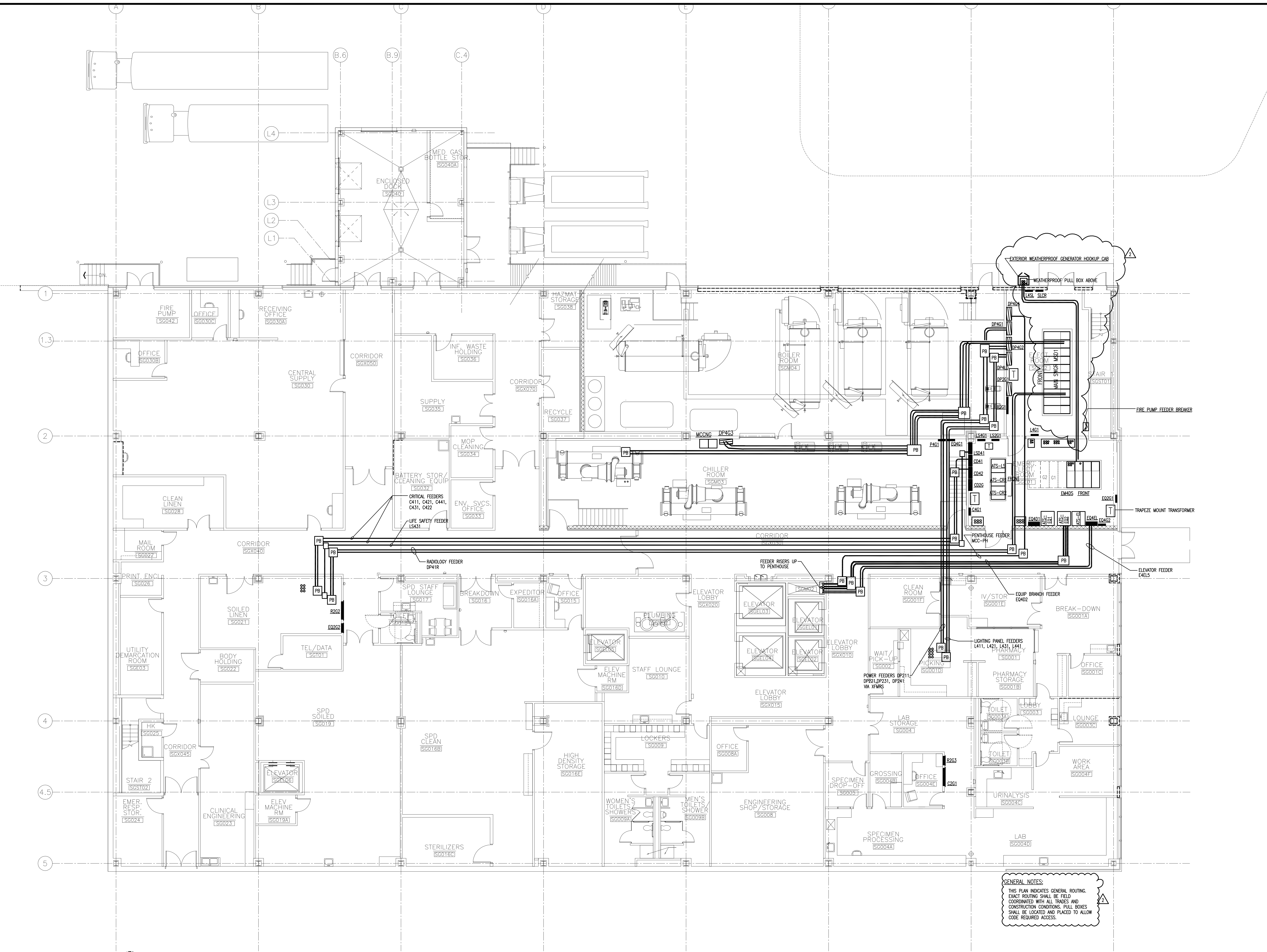
Project Title
 Mercy Health Care System of Maine
 FORE RIVER SHORT STAY HOSPITAL



Project Number
 F05-4898

Drawing Title and Number
 ELECTRICAL
 GROUND FLOOR CONDUIT PLAN

E-03



1 GROUND FLOOR PLAN
 A1.00 1/8" = 1'-0"

GENERAL NOTES:
 THIS PLAN INDICATES GENERAL ROUTING.
 EXACT ROUTING SHALL BE FIELD
 COORDINATED WITH ALL TRADES AND
 CONSTRUCTION CONDITIONS. PULL BOXES
 SHALL BE LOCATED AND PLACED TO ALLOW
 CODE REQUIRED ACCESS.

NO.	DESCRIPTION	DATE
1	REVISION	
2	REVISION	
3	REVISION	
4	REVISION	
5	REVISION	
6	REVISION	
7	REVISION	
8	REVISION	
9	REVISION	
10	REVISION	
11	REVISION	
12	REVISION	
13	REVISION	
14	REVISION	
15	REVISION	
16	REVISION	
17	REVISION	
18	REVISION	
19	REVISION	
20	REVISION	
21	REVISION	
22	REVISION	
23	REVISION	
24	REVISION	
25	REVISION	
26	REVISION	
27	REVISION	
28	REVISION	
29	REVISION	
30	REVISION	
31	REVISION	
32	REVISION	
33	REVISION	
34	REVISION	
35	REVISION	
36	REVISION	
37	REVISION	
38	REVISION	
39	REVISION	
40	REVISION	
41	REVISION	
42	REVISION	
43	REVISION	
44	REVISION	
45	REVISION	
46	REVISION	
47	REVISION	
48	REVISION	
49	REVISION	
50	REVISION	