

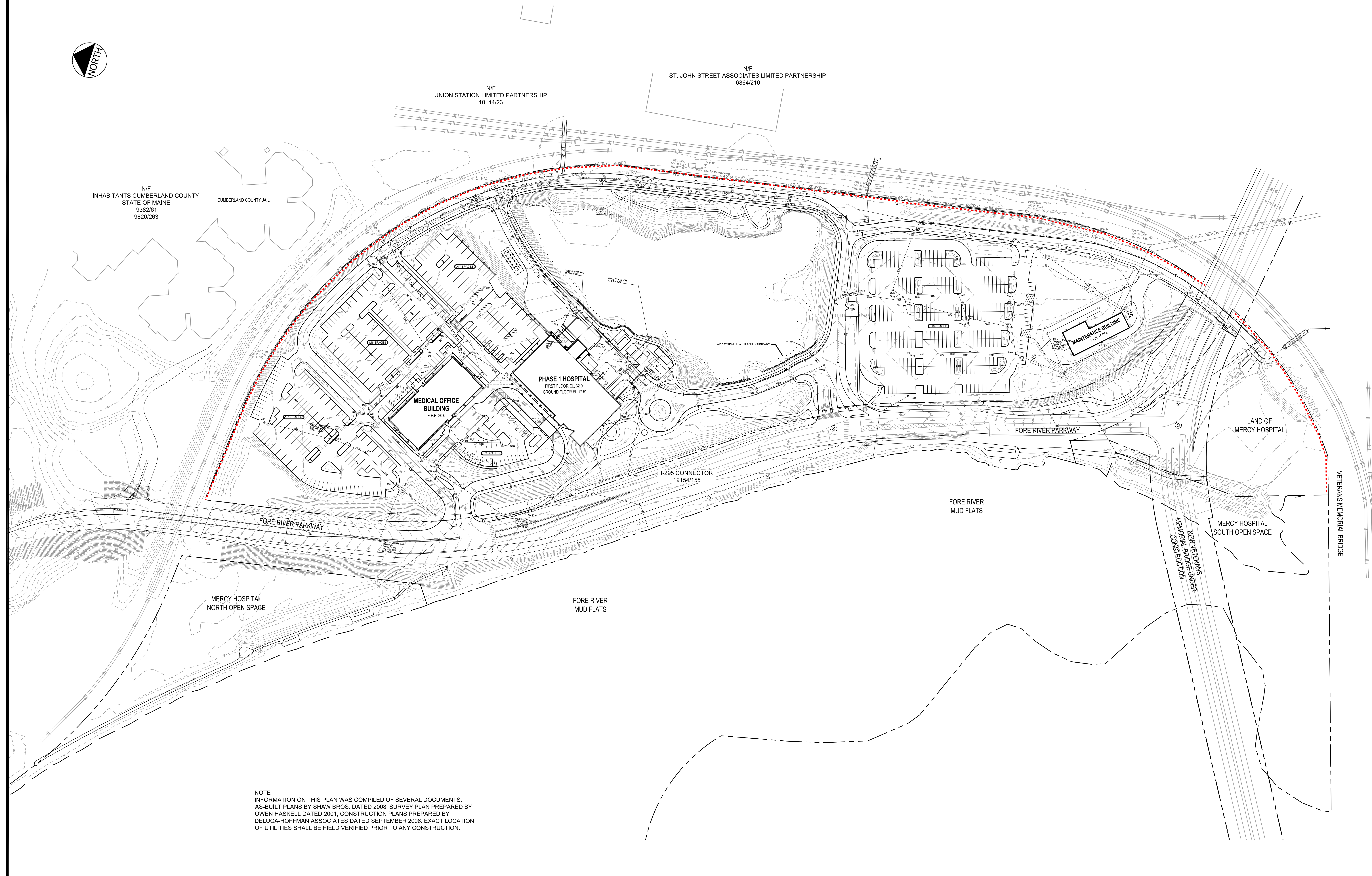


N/F
UNION STATION LIMITED PARTNERSHIP
10144/23

N/F
ST. JOHN STREET ASSOCIATES LIMITED PARTNERSHIP
6864/210

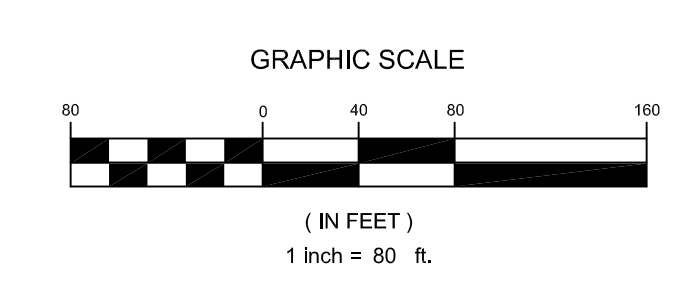
N/F
INHABITANTS CUMBERLAND COUNTY
STATE OF MAINE
9382/61
9820/263

CUMBERLAND COUNTY JAIL



NOTE
INFORMATION ON THIS PLAN WAS COMPILED OF SEVERAL DOCUMENTS.
AS-BUILT PLANS BY SHAW BROS. DATED 2008. SURVEY PLAN PREPARED BY
OWEN HASKELL DATED 2001. CONSTRUCTION PLANS PREPARED BY
DELUCA-HOFFMAN ASSOCIATES DATED SEPTEMBER 2006. EXACT LOCATION
OF UTILITIES SHALL BE FIELD VERIFIED PRIOR TO ANY CONSTRUCTION.

PRELIMINARY - NOT FOR CONSTRUCTION



		PROJECT MERCY AT THE FORE MASTER PLAN	DeLUCA-HOFFMAN ASSOCIATES, INC. 778 MAIN STREET, SUITE 6 SOUTH PORTLAND, ME 04106 207.775.1121 WWW.DELUCAHOFFMAN.COM
SHEET TITLE OVERALL EXISTING CONDITIONS PLAN		CLIENT MERCY HOSPITAL	DRAWN: DED DATE: MAY 2012 DESIGNED: BEK SCALE: 1" = 60' CHECKED: SRB JOB NO. 2149.08 FILE NAME: 2149.08-EX SHEET C-2.1
1 07.26.12 SUBMITTED TO MEDEP WITH MAJOR SITE PLAN AMENDMENT APPLICATION	REVISIONS	P.E. STEPHEN R. BUSHEY LIC. # 7429	