

**Francis**

**Caufman**

**Foley**

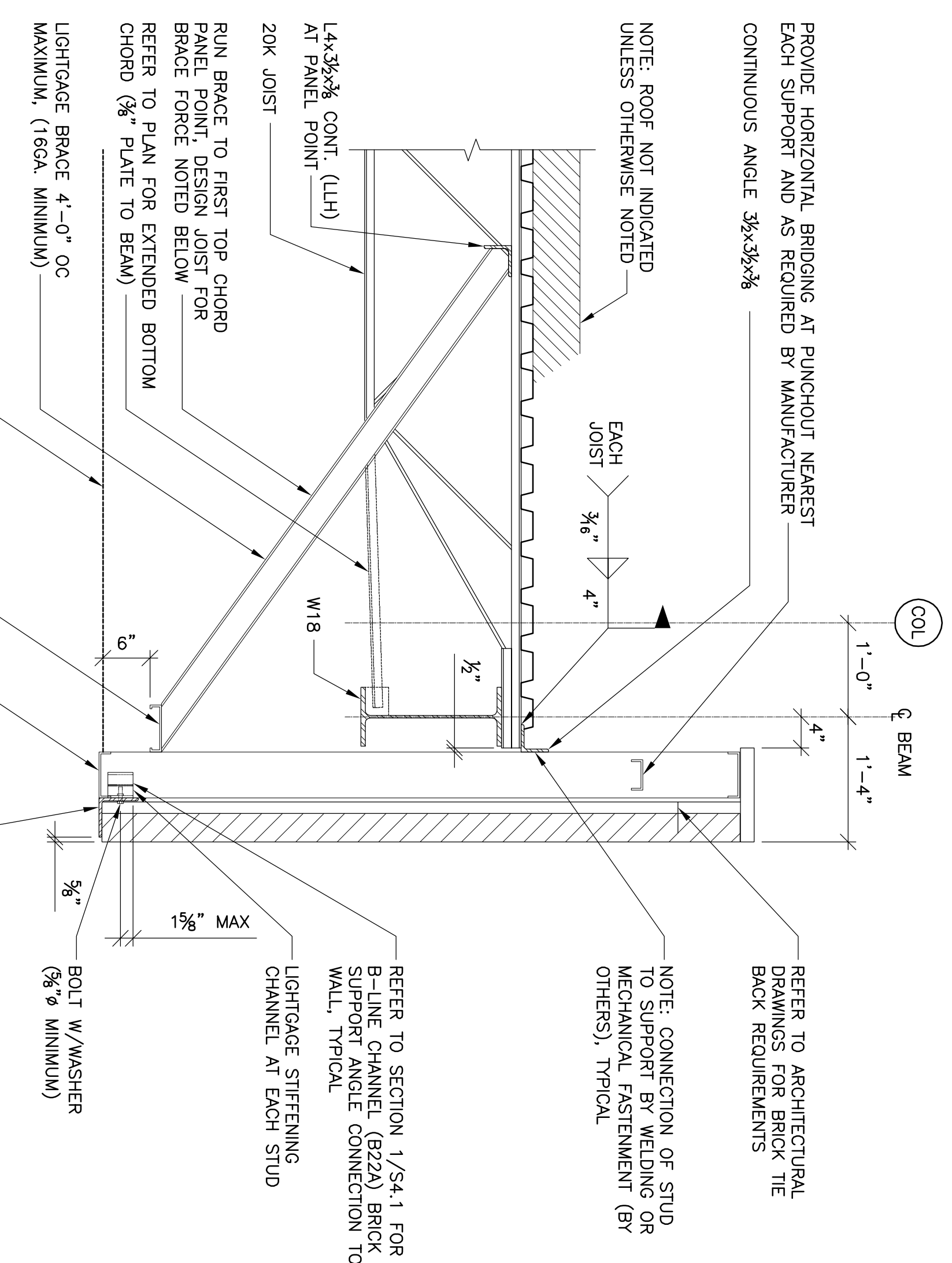
**Hoffmann**

Francis, Cauffman  
Foley, Hoffmann  
Architects Ltd. 2120 Arch Street  
Philadelphia, PA 19103  
215-588-8200

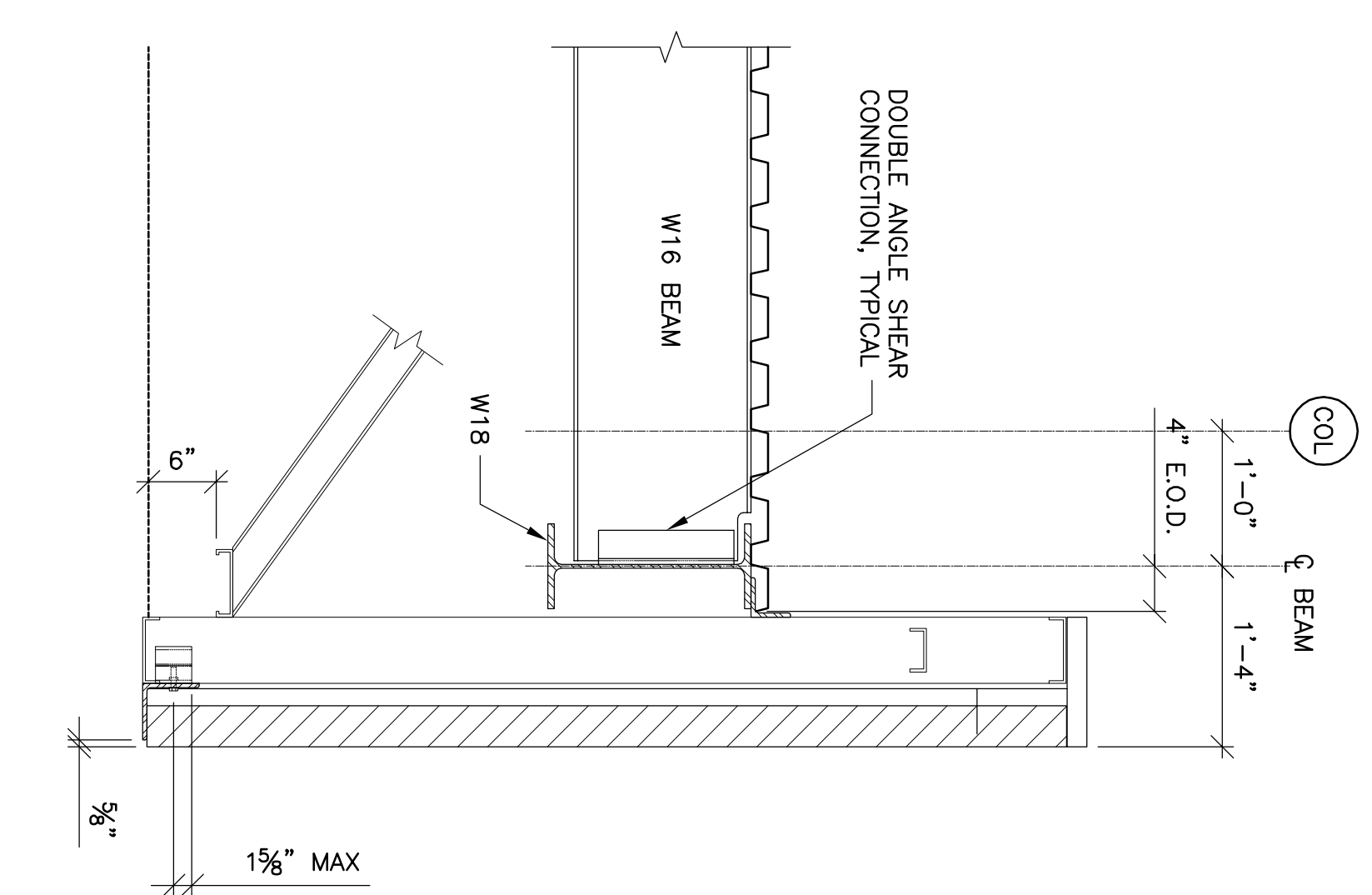
STRUCTURAL ENGINEER  
ROBERT EDWARD CHESTER ASSOCIATES,  
118 COLTIER AVENUE  
ARNDTSCHE, PA 19003  
P (610) 945-9570  
F (610) 945-9572

M/E/P ENGINEERS, LP  
1500 WALNUT STREET, SUITE 1400  
PHILADELPHIA, PA 19102  
P 215-282-2154  
F 215-755-5708

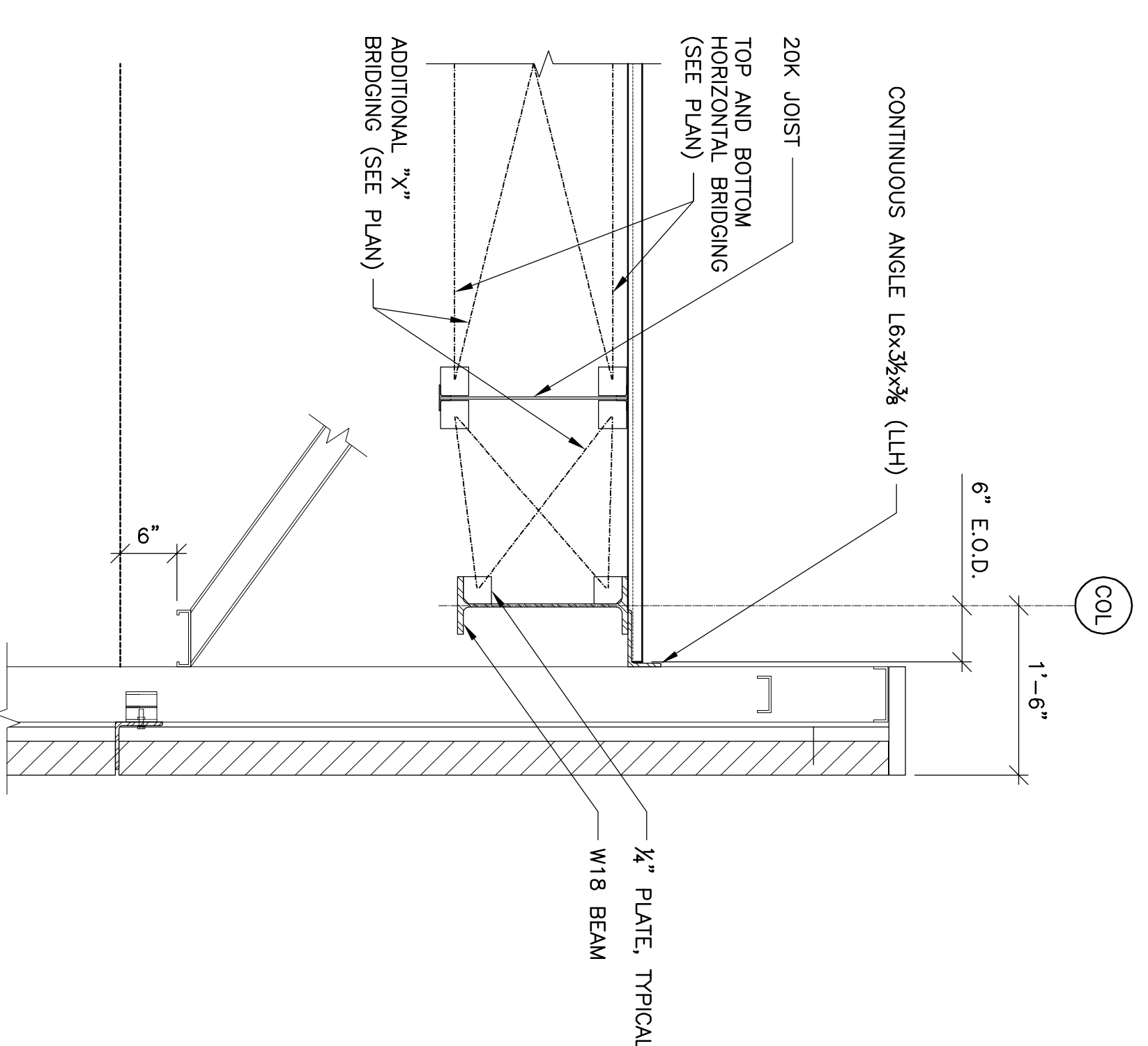
11-20-06 CONSTRUCTION DOCUMENTS ISSUED



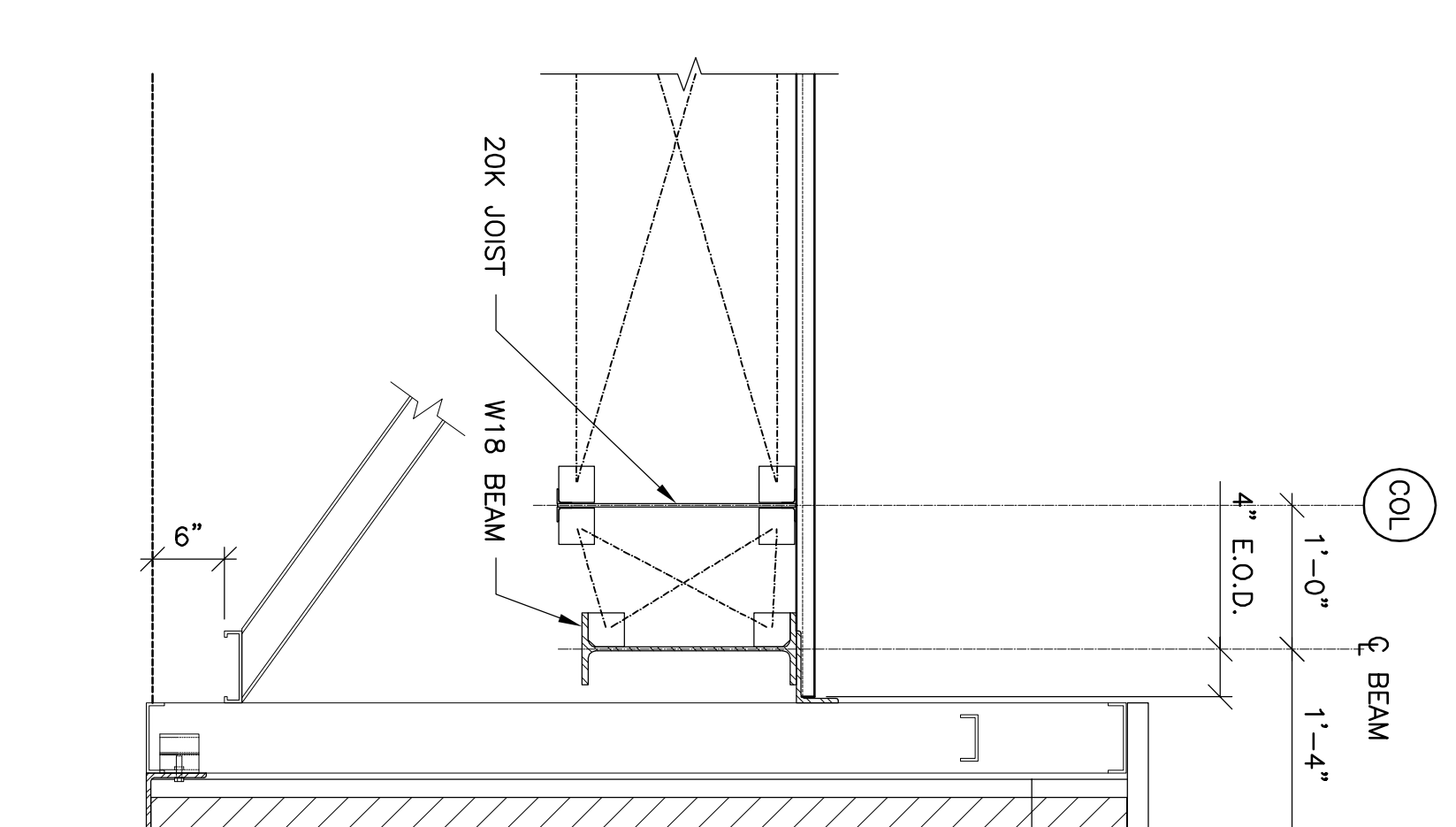
**1 SECTION**  
SCALE: 3/4"=1'-0"



**2 SECTION**  
SCALE: 3/4"=1'-0"



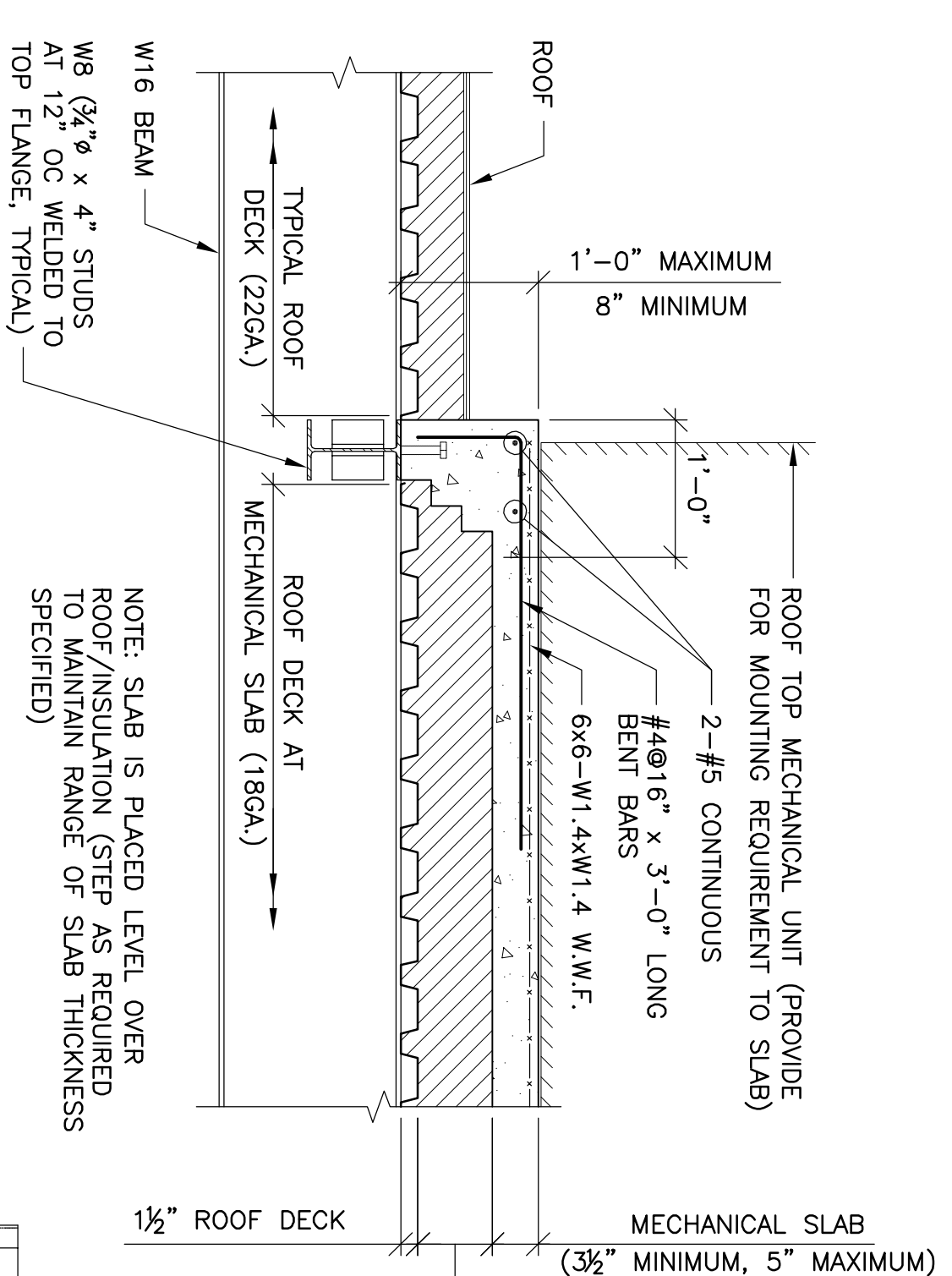
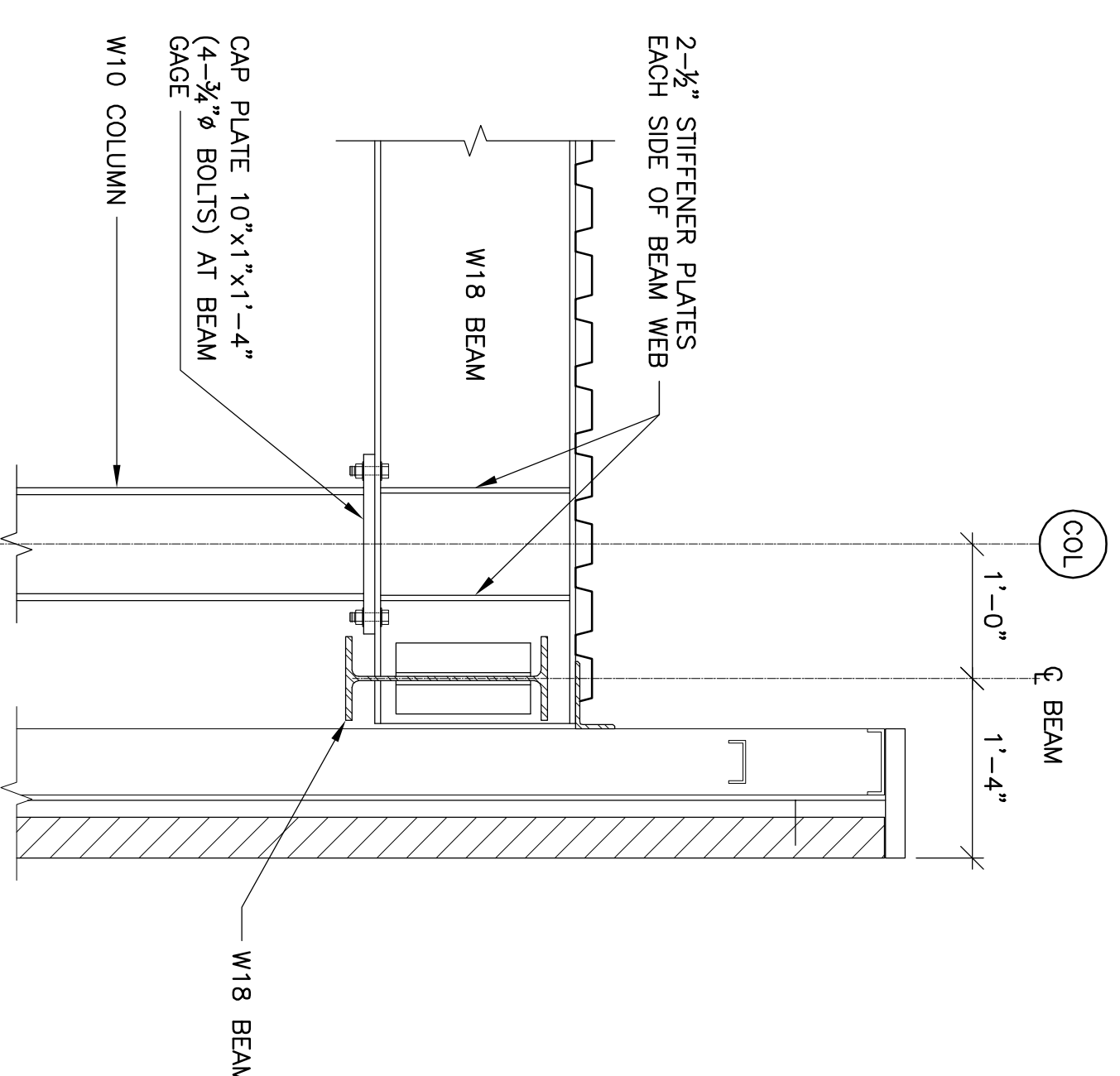
**3 SECTION**  
SCALE: 3/4"=1'-0"



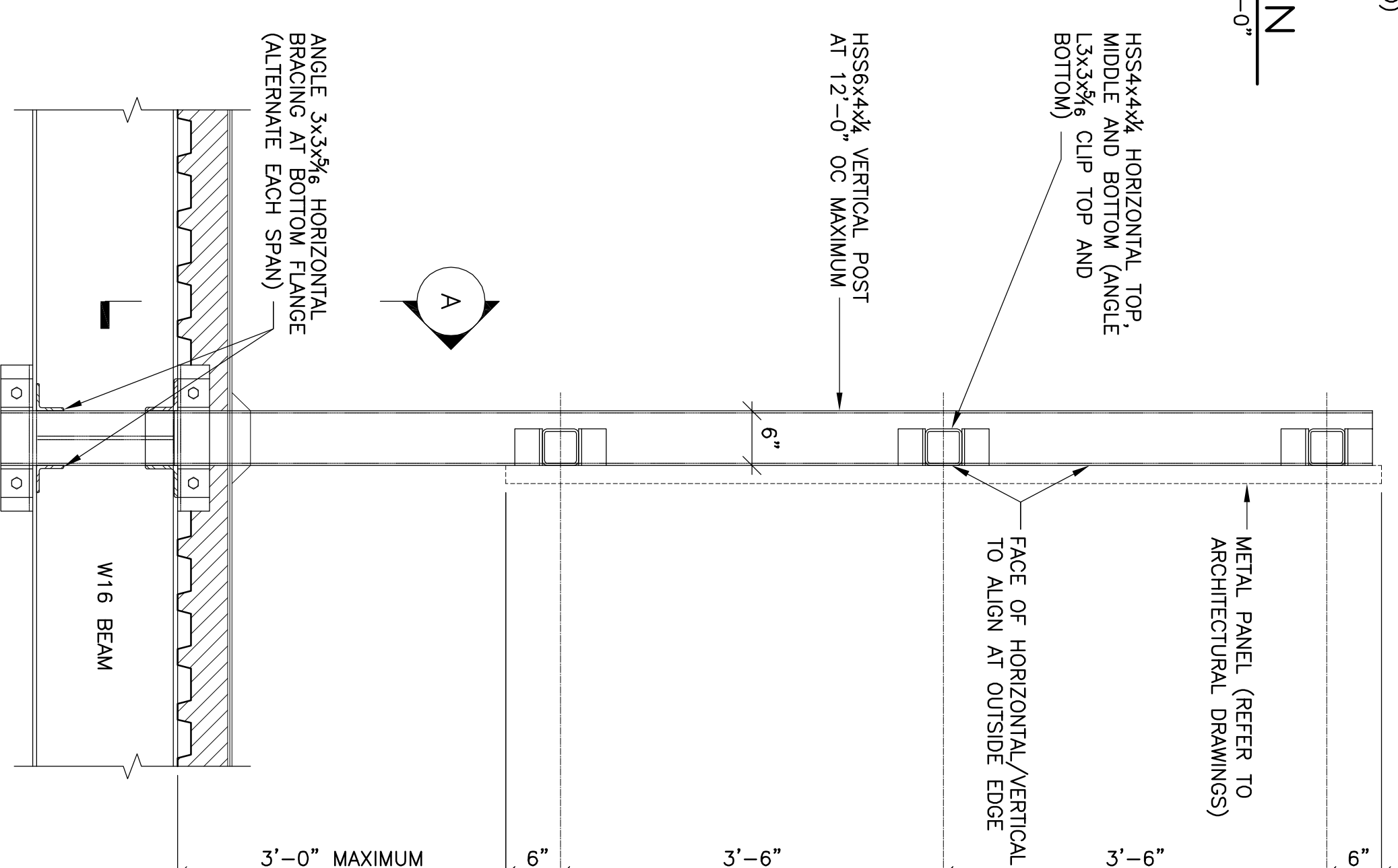
**4 SECTION**  
SCALE: 3/4"=1'-0"

**TYPICAL NOTES:**  
- ANGLES SUPPORTING STUDS SHALL BE LEVEL AND PLUMB FLOOR TO FLOOR.  
- SEE ARCHITECTURAL FOR ALL REQUIREMENTS REGARDING VAPOR BARRIER, WEEP HOLE, INSULATION, ETC.  
- DESIGN OF ALL LIGHTGAGE ATTACHMENT WELDMENTS TO LIGHTGAGE, ETC IS TO BE BY THE CONTRACTOR. SUBMIT STAMPED CALCULATIONS.

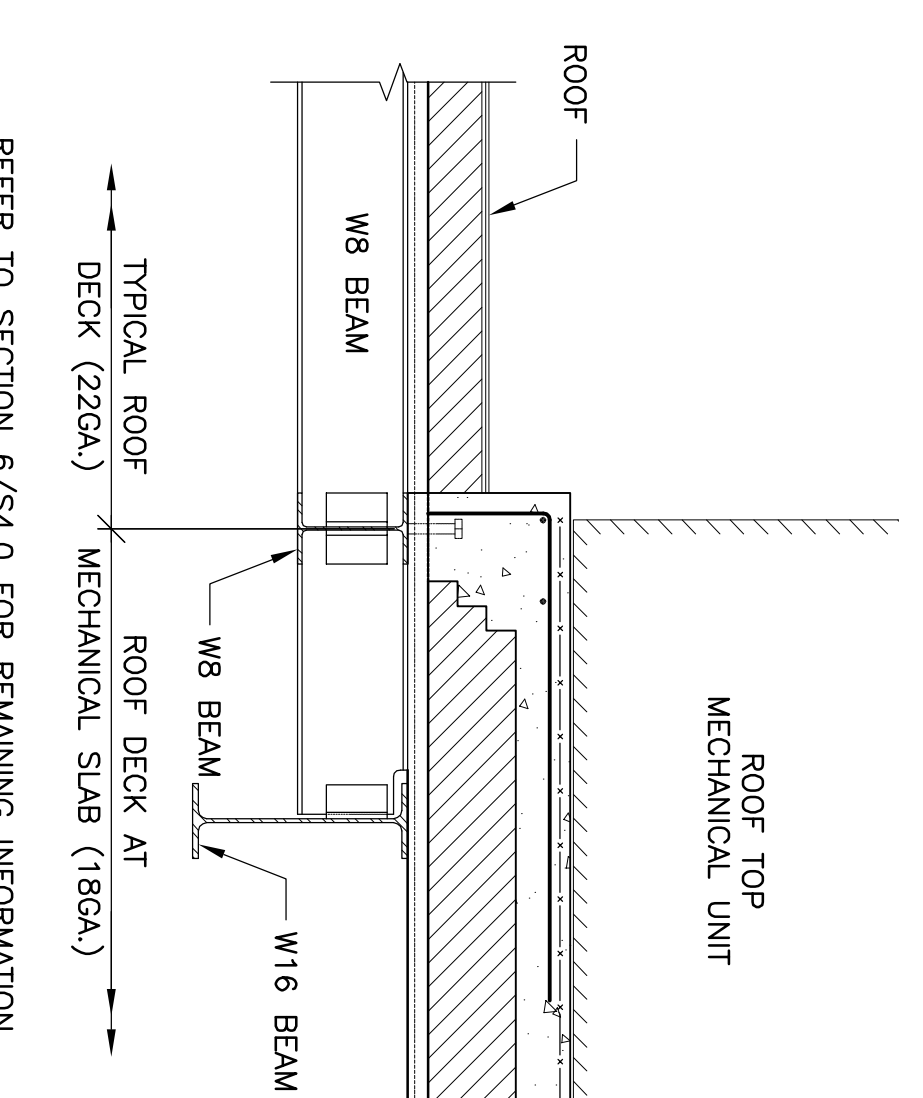
**5 SECTION**  
SCALE: 3/4"=1'-0"



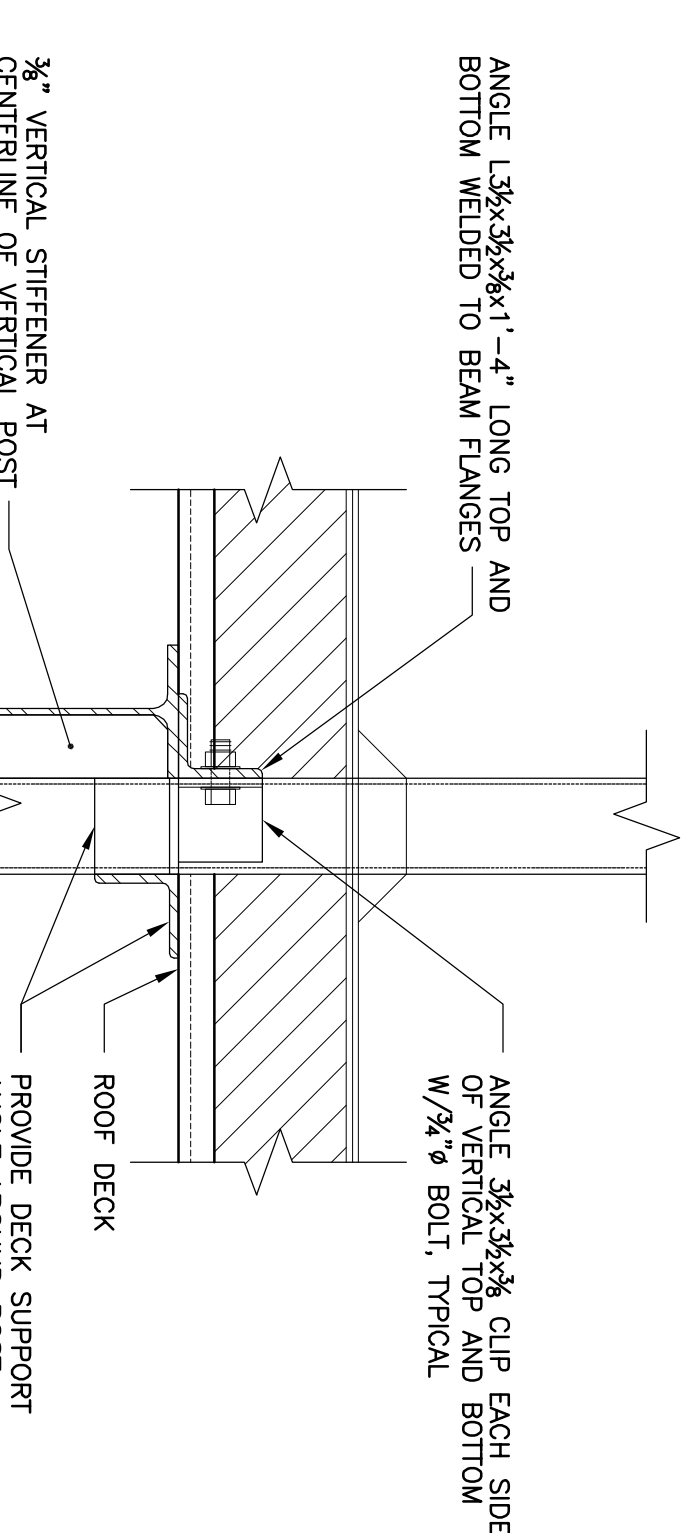
**6 SECTION**  
SCALE: 3/4"=1'-0"



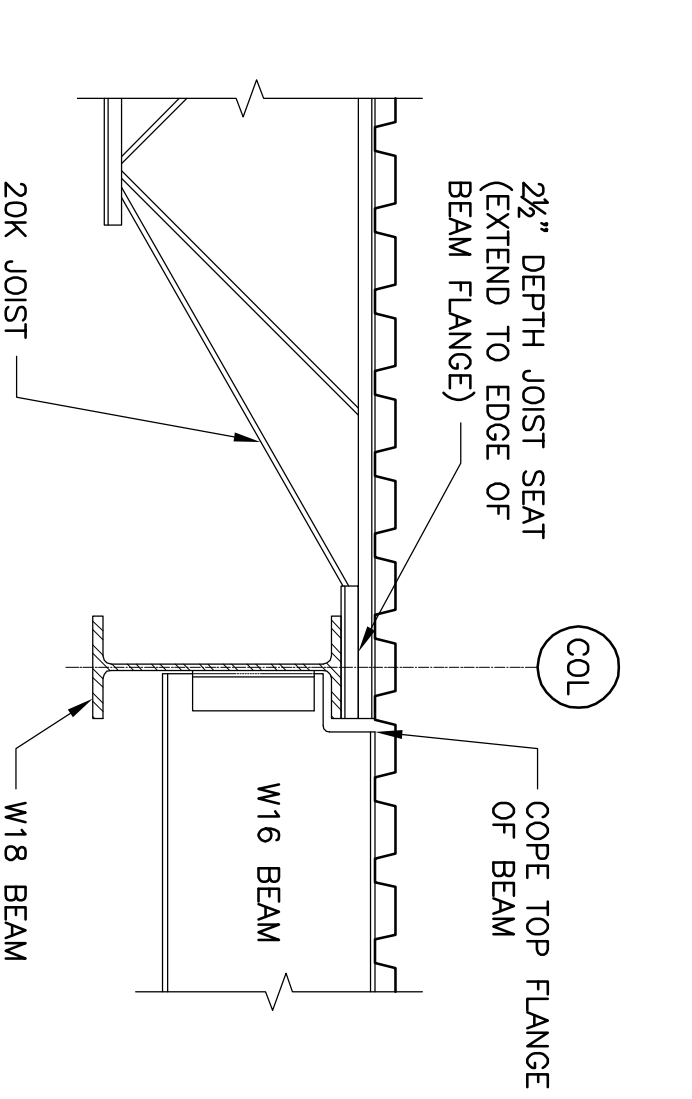
**7 SECTION**  
SCALE: 3/4"=1'-0"



**8 SECTION**  
SCALE: 3/4"=1'-0"



**9 SECTION**  
SCALE: 3/4"=1'-0"



**10 SECTION**  
SCALE: 3/4"=1'-0"

**VIEW "A"**  
SCALE: 1/2"=1'-0"

Sheet  
**STEEL FRAMING  
DETAILS**

Project Title  
Landmark Healthcare  
Facilities LLC  
Fore River Medical  
Pavilion  
Portland, Maine

Date  
NOVEMBER 20, 2006

Project Number  
F06-5103

Drawing Number  
S4.0