

**LANDMARK
HEALTHCARE
FACILITIES, LLC**
839 North Jefferson Street
Milwaukee, Wisconsin 53302
Telephone: (414) 277-0500
Facsimile: (414) 277-1055

Francis

Caufman

Foley

Hoffmann

Francis Hoffmann
2120 Arch Street
Philadelphia, PA 19103
Architects Ltd. 215-588-8200

STRUCTURAL ENGINEER
ROBERT EDWARD CHESTER ASSOCIATES,
118 COLTIER AVENUE
ARLINGTON, PA 19003

P (610) 945-9570
F (610) 945-9572

M/E/P ENGINEERS, LP
1500 WALNUT STREET, SUITE 1400
PHILADELPHIA, PA 19102
P 215-282-2154
F 215-735-5708

11-20-06 CONSTRUCTION DOCUMENTS ISSUED

Sheet
**FOUNDATION
DETAILS**

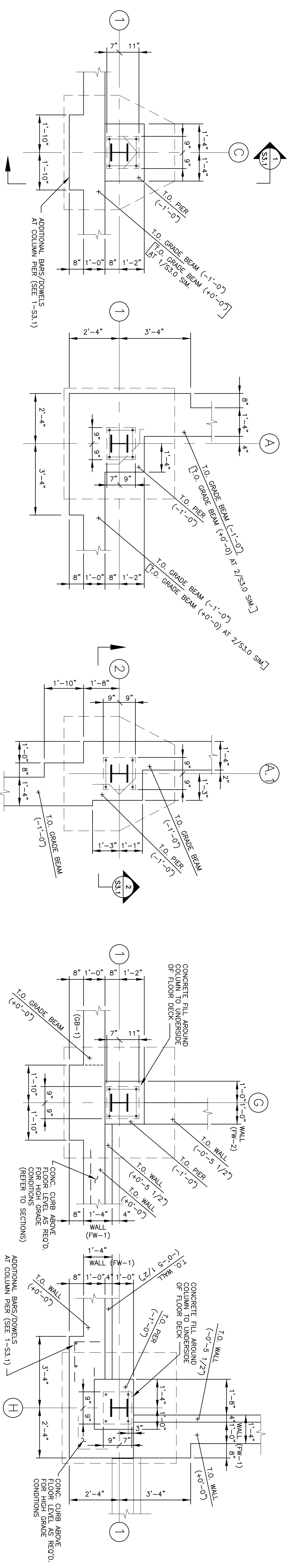
Project Title
**Landmark Healthcare
Facilities LLC**

**Fore River Medical
Pavilion
Portland, Maine**

Date
NOVEMBER 20, 2006

Project Number
F06-5103

Drawing Number



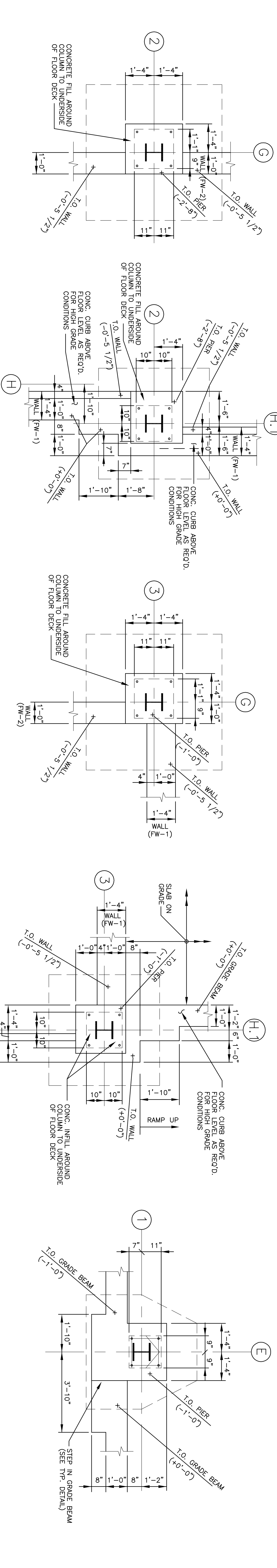
PLAN DETAIL 1
SCALE: 1/2"=1'-0"

PLAN DETAIL 2
SCALE: 1/2"=1'-0"

PLAN DETAIL 3
SCALE: 1/2"=1'-0"

PLAN DETAIL 4
SCALE: 1/2"=1'-0"

PLAN DETAIL 5
SCALE: 1/2"=1'-0"



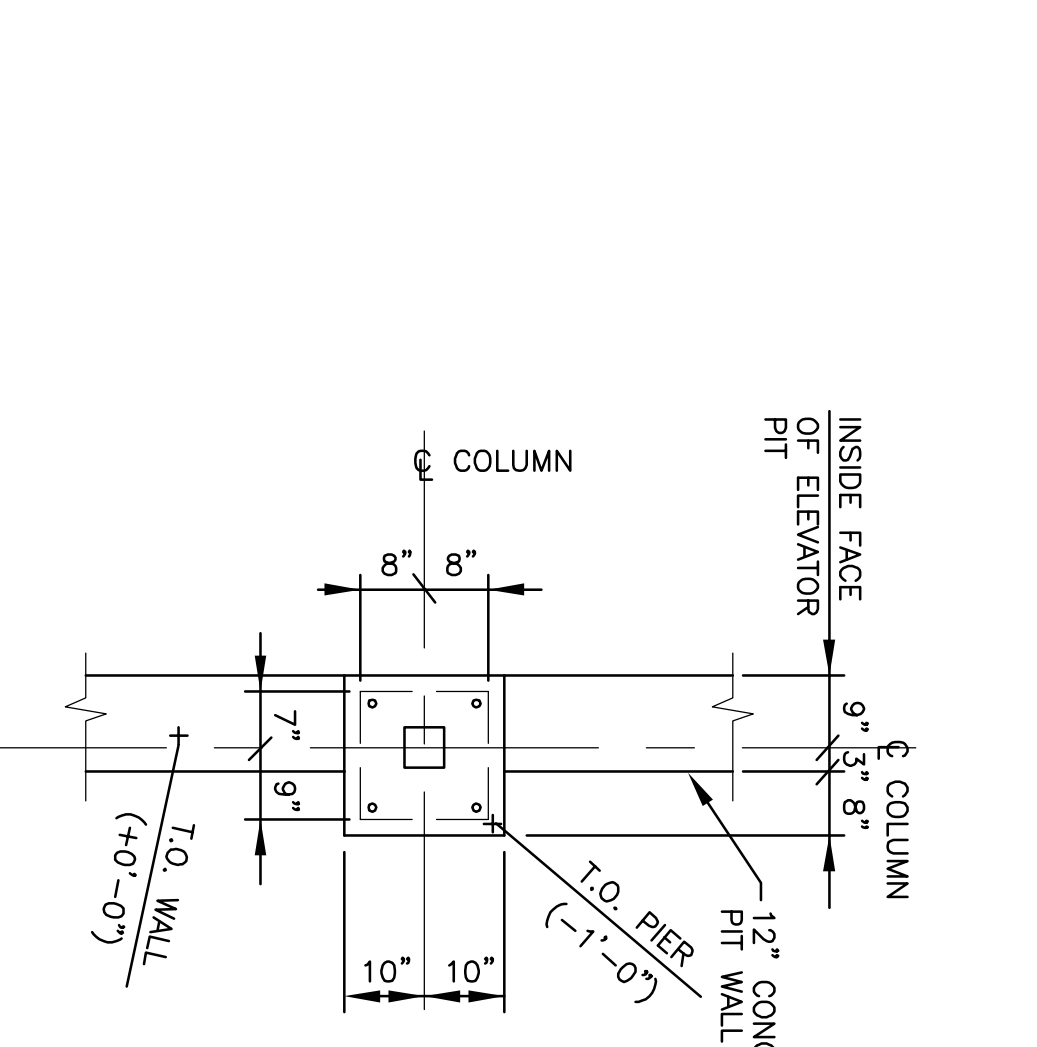
PLAN DETAIL 6
SCALE: 1/2"=1'-0"

PLAN DETAIL 7
SCALE: 1/2"=1'-0"

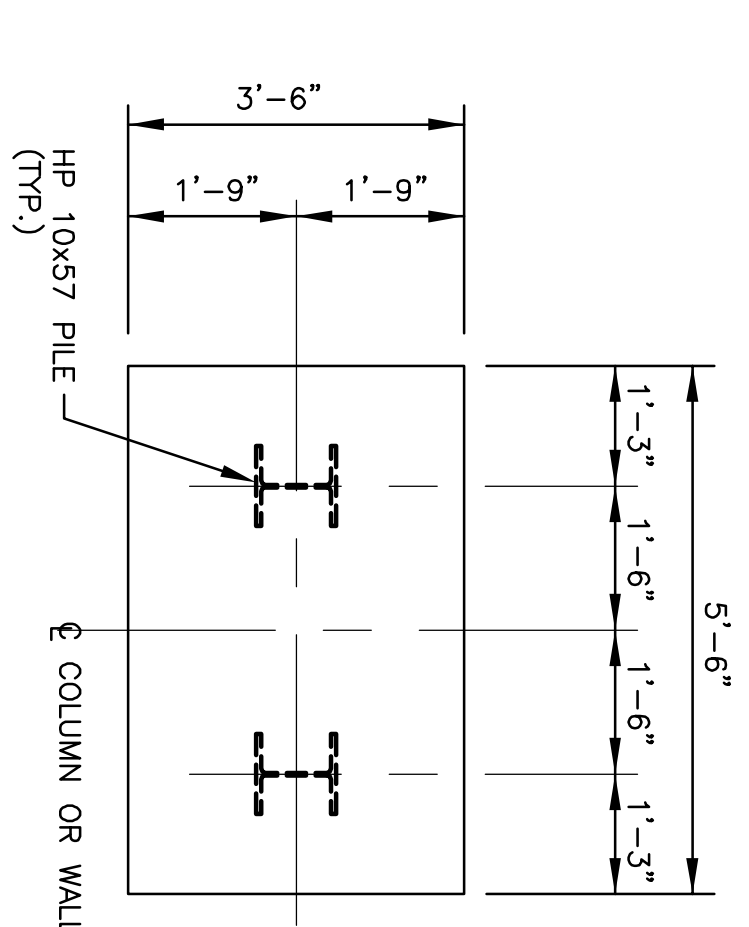
PLAN DETAIL 8
SCALE: 1/2"=1'-0"

PLAN DETAIL 9
SCALE: 1/2"=1'-0"

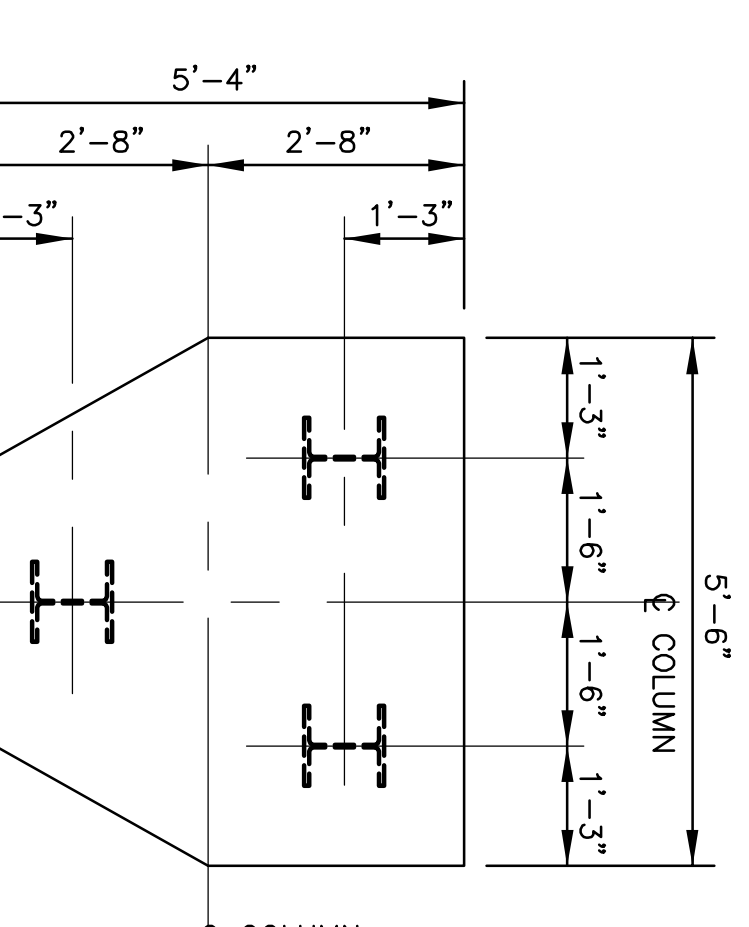
PLAN DETAIL 10
SCALE: 1/2"=1'-0"



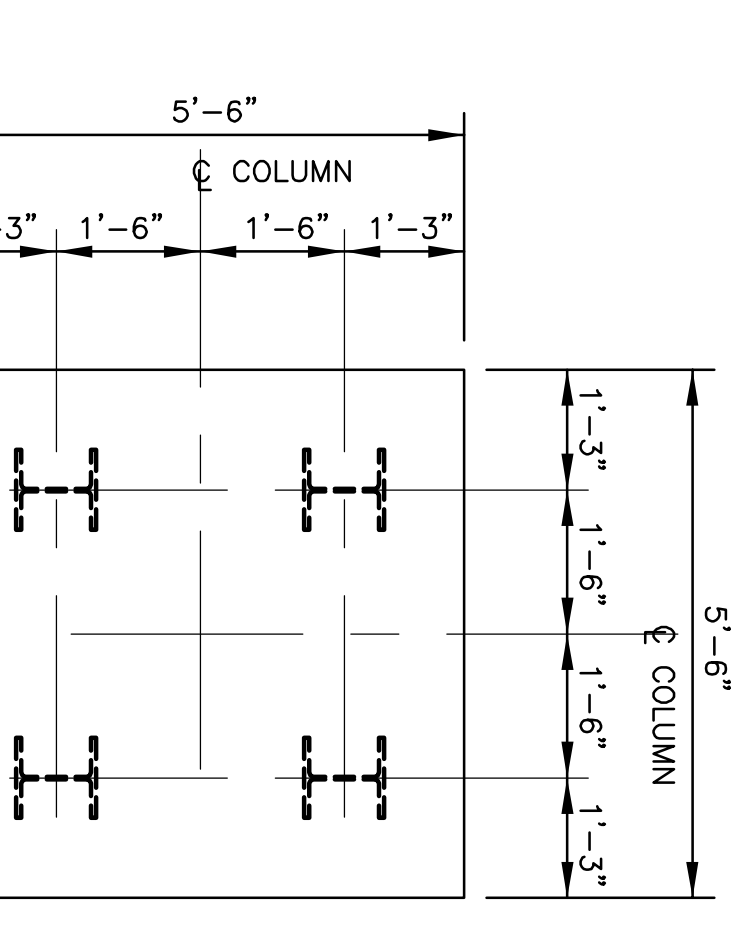
PLAN DETAIL 11
SCALE: 1/2"=1'-0"



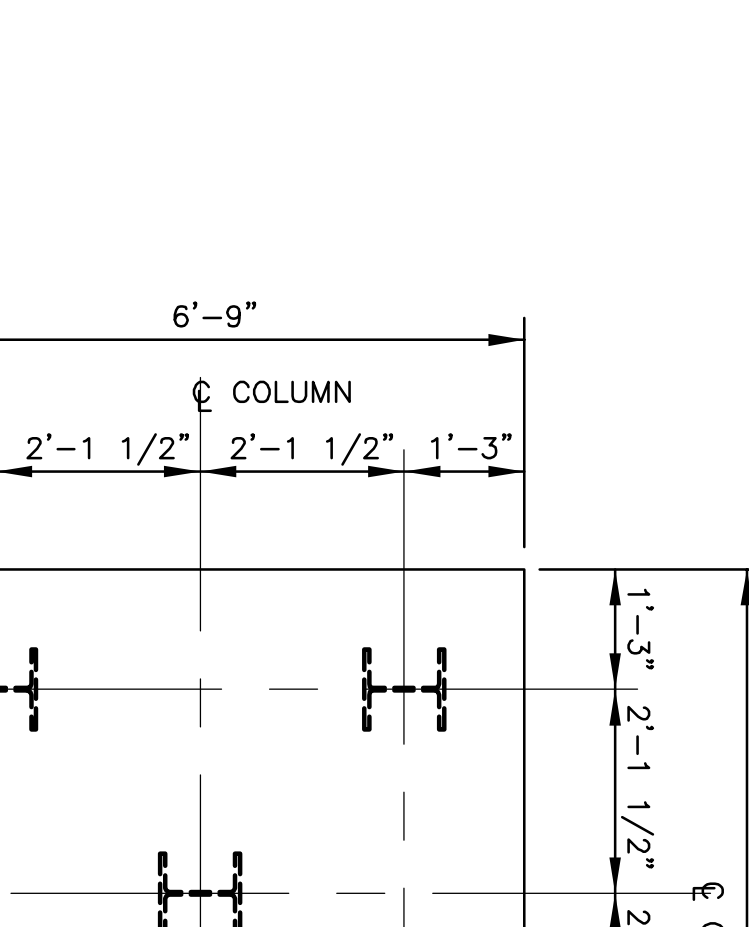
2-PILES



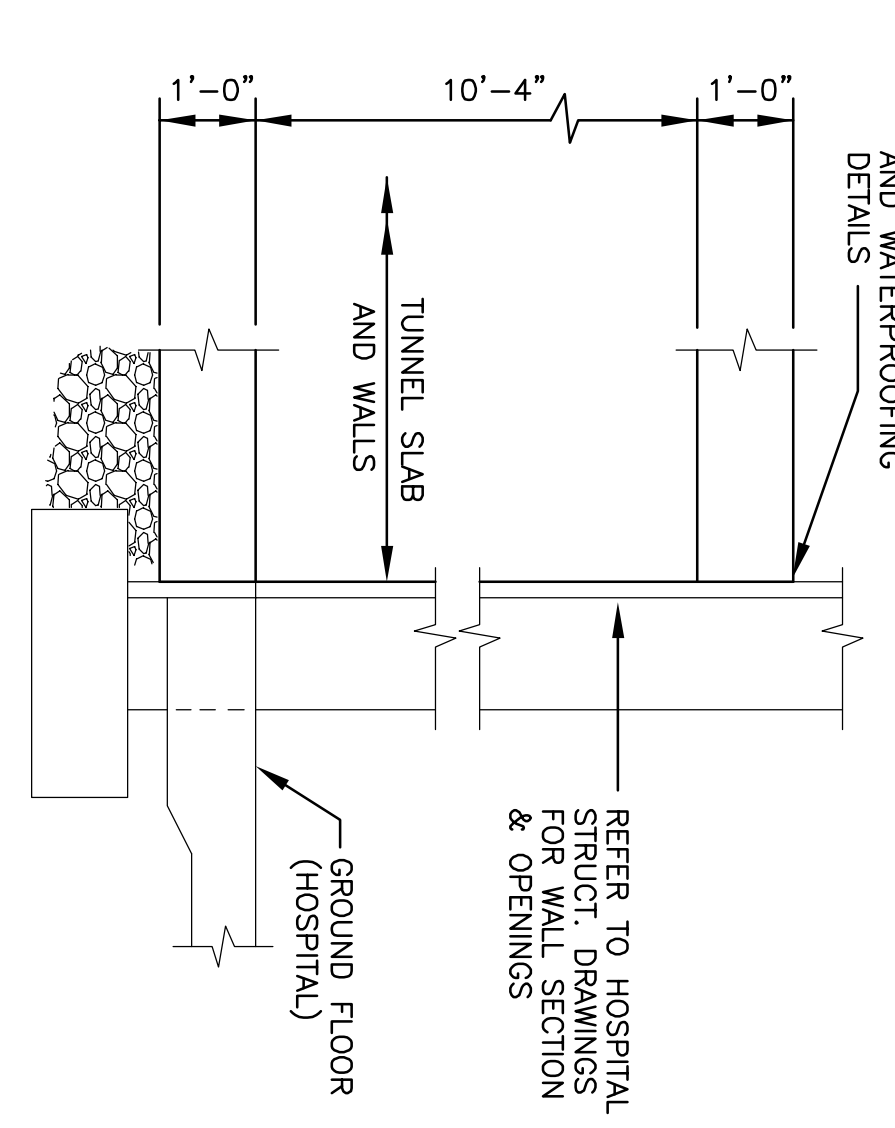
3-PILES



4-PILES



5-PILES



SECTION 12
SCALE: 1/2"=1'-0"
REFER TO TUNNEL
SECTIONS 1 & 2/53.2

S3.0