

**LANDMARK
HEALTHCARE
FACILITIES, LLC**
839 North Jefferson Street
Milwaukee, Wisconsin 53302
Telephone: (414) 277-0500
Facsimile: (414) 277-1055

Francis

Cauffman

Foley

Hoffmann

Francis Cauffman
Foley Hoffmann
Architects Ltd.
2120 Arch Street
Philadelphia, PA 19103
215-588-8200

STRUCTURAL ENGINEER
ROBERT EDWARD CHESTER ASSOCIATES,
118 COLTIER AVENUE
ARNDT, PA 19003
P (610) 845-9570
F (610) 845-9572

M/E/P ENGINEERS, LLP
1500 WALNUT STREET, SUITE 1400
PHILADELPHIA, PA 19102
P 215-282-3154
F 215-755-5708

REVISIONS
11-20-06 CONSTRUCTION DOCUMENTS ISSUED

Sheet
ROOF FRAMING PLAN

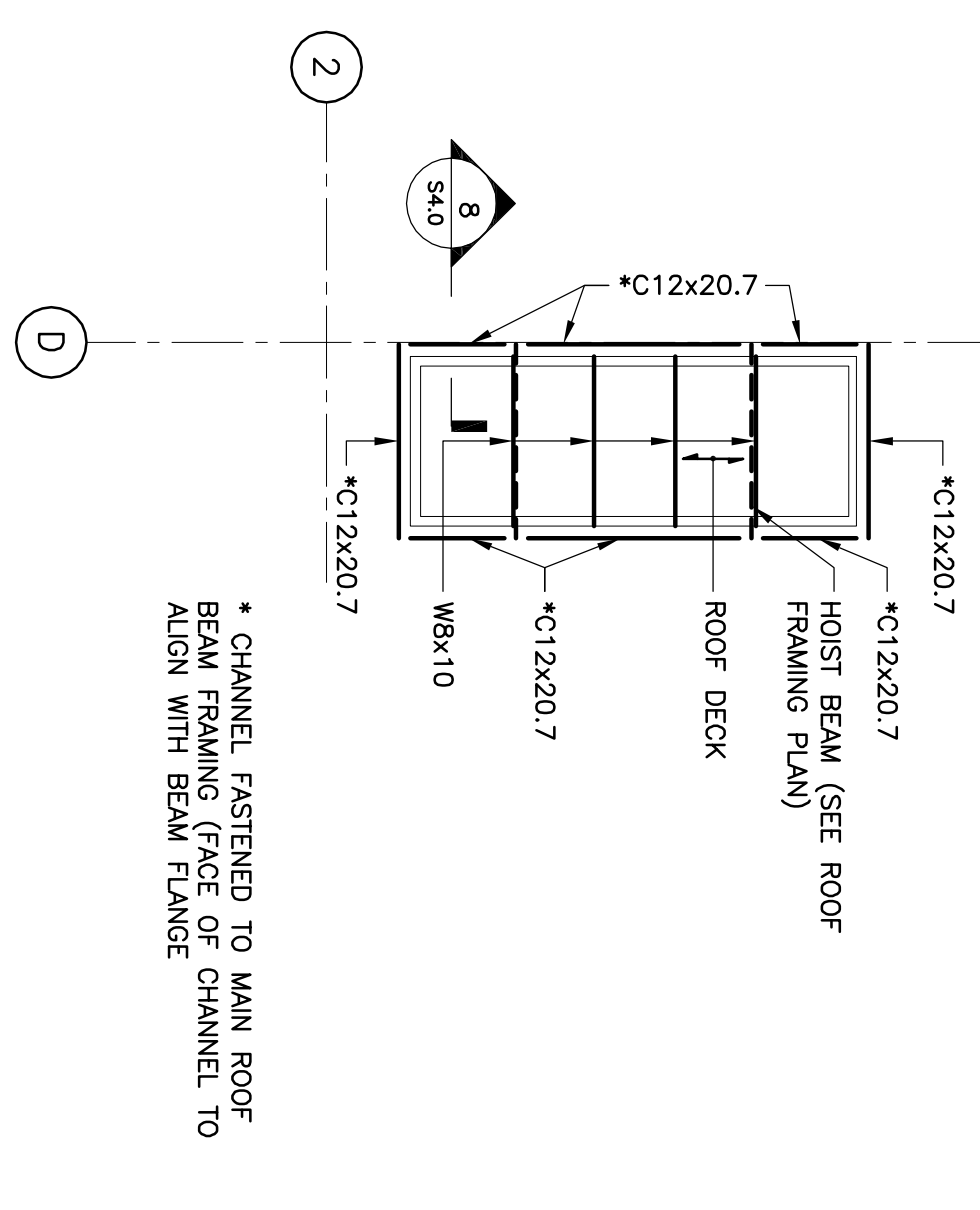
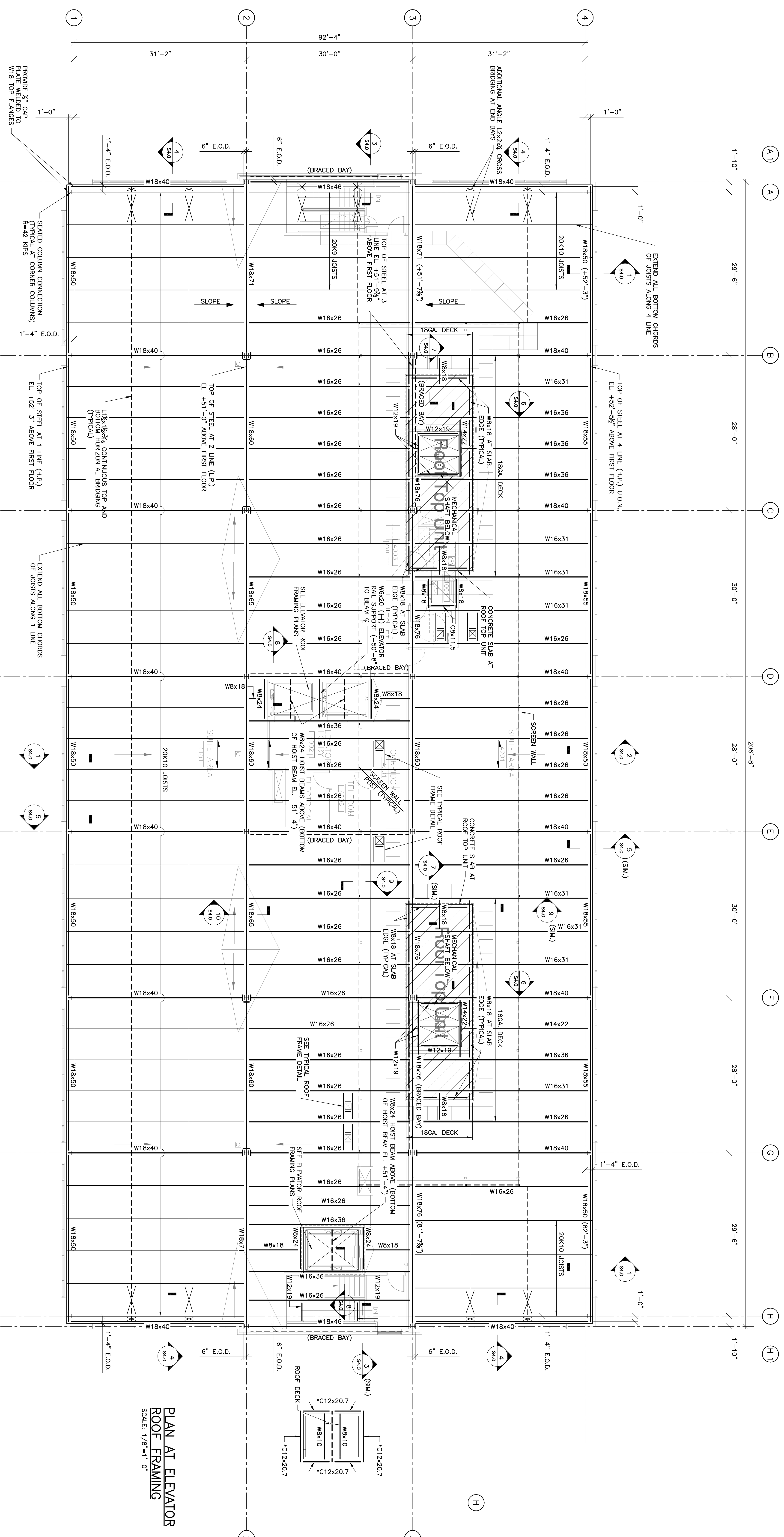
Project Title
**Fore River Medical
Pavilion
Portland, Maine**

Landmark Healthcare
Facilities LLC

Date
NOVEMBER 20, 2006

Project Number
F06-5103

Drawing Number
S1.5



PLAN AT ELEVATOR ROOF FRAMING
SCALE: 1/8"=1'-0"

ROOF FRAMING PLAN
SCALE: 1/8"=1'-0"

- NOTES**
- INDICATES 1/2" DEEP, 220A, WIDE RIB (TYPE B) PAINTED STEEL ROOF DECK UNLESS OTHERWISE NOTED.
 - E.O.D. INDICATES EDGE OF PAINTED STEEL ROOF DECK.
 - INDICATES BEAM TO COLUMN CONNECTION FOR DIAPHRAGM DISTRIBUTION (REFER TO SECTION 6/52.0).