

**LANDMARK
HEALTHCARE
FACILITIES, LLC**
839 North Jefferson Street
Milwaukee, Wisconsin 53302
Telephone: (414) 277-0500
Facsimile: (414) 277-1055

Francis

Caufman

Foley

Hoffmann

Francis, Cauffman
Foley, Hoffmann
Architects Ltd.
2120 Arch Street
Philadelphia, PA 19103
215-588-8200

STRUCTURAL ENGINEER
ROBERT EDWARD CHESTER ASSOCIATES,
118 COLTIER AVENUE
ARLINGTON, PA 19003
P (610) 545-9570
F (610) 545-9572

M/P ENGINEERS, LP
1500 WALNUT STREET, SUITE 1400
PHILADELPHIA, PA 19102
P 215-282-2154
F 215-755-5708

REVISIONS
11-20-06 CONSTRUCTION DOCUMENTS ISSUED

Sheet
**FOURTH FLOOR
FRAMING PLAN**

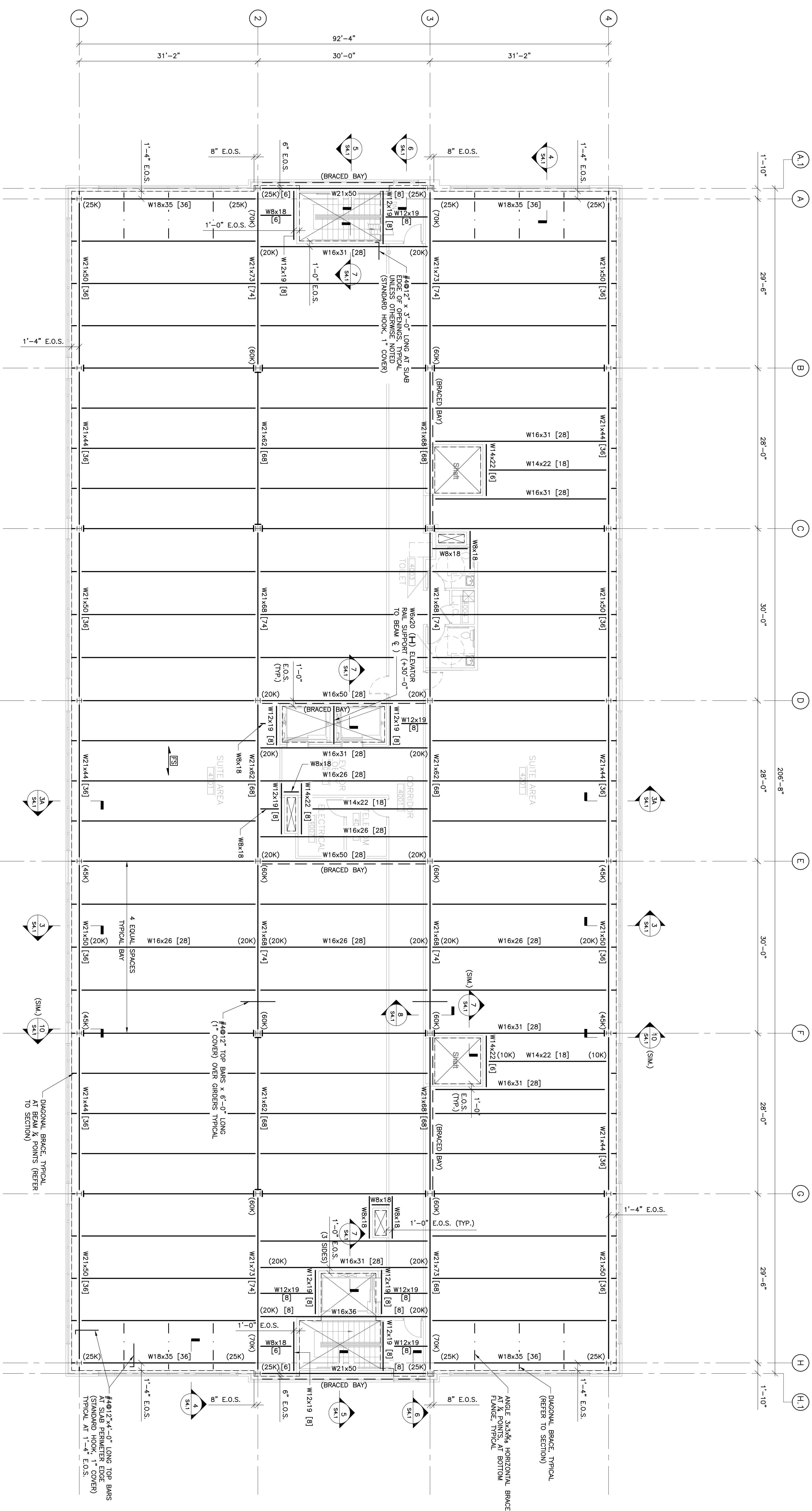
Project Title
**Landmark Healthcare
Facilities LLC**
Fore River Medical
Pavilion
Portland, Maine

Date
NOVEMBER 20, 2006

Project Number
F06-5103

Drawing Number

S1.4



FOURTH FLOOR FRAMING PLAN

SCALE 1/8"=1'-0"



- NOTES**
1. (.....) DESIGN BEAM REACTION (KIPS) TYPICAL FOR BEAMS, GIRDERS ALONG COLUMN LINE UNLESS OTHERWISE NOTED.
 2. ALL BEAMS/GIRDERS TO BE FABRICATED/ERECTED WITH STANDARD MILL CAMBER AT THE TOP.
 3. E.O.S. INDICATES EDGE OF SLAB/DECK (PROVIDE CONTINUOUS 12GA. BENT PLATE CLOSURE/FOURSTOP UNLESS OTHERWISE NOTED IN SECTION).
 4. PROVIDE CONCRETE SHUTOFFS AT ALL COLUMNS AND OPENINGS (USE 12GA. BENT PLATE UNLESS OTHERWISE NOTED IN SECTION).
 5. [] INDICATES NUMBER OF 3/4" DIAMETER x 4" STUDS PER BEAM EQUALLY SPACED FOR ENTIRE SPAN (MINIMUM SPACING: 48").
 6. [ES] INDICATES TYPICAL FLOOR CONSTRUCTION:
3/4" LIGHT WEIGHT CONCRETE OVER 2" DEEP 20GA. GALVANIZED STEEL COMPOSITE FLOOR DECK (3/8" TOTAL THICKNESS)
W/ 1/2" EPS INSULATION ON TOP OF DECK AND 1/2" GYPSUM BOARD ON BOTTOM OF DECK (3" STRIP MINIMUM), PROVIDE 5/8" x 2" x 1/2" x 1" W/ 3/4" (5/8" STRIP) LOCATED 1/2" FROM TOP OF SLAB.
 7. FINISH SLAB ELEVATION +38'-8" ABOVE FIRST FLOOR.
 8. TOP OF STEEL ELEVATION +38'-28" ABOVE FIRST FLOOR UNLESS OTHERWISE NOTED.
 9. [B] INDICATES BEAM TO COLUMN CONNECTION FOR DIAPHRAGM DISTRIBUTION (REFER TO SECTION 6/52.0).