

**Francis**

**Caufman**

**Foley**

**Hoffmann**

Francis, Cauffman  
Foley, Hoffmann  
Architects Ltd.  
2120 Arch Street  
Philadelphia, PA 19103  
215-588-8250

STRUCTURAL ENGINEER  
ROBERT EDWARD CHESTER ASSOCIATES,  
118 COLTIER AVENUE  
ANNAPOLIS, PA 19003  
P (410) 545-9570  
F (410) 545-9572

M/E/P ENGINEERS, LLP  
1500 WALNUT STREET, SUITE 1400  
PHILADELPHIA, PA 19102  
P 215-282-3154  
F 215-755-5708

REVISIONS  
11-20-06 CONSTRUCTION DOCUMENTS ISSUED

Sheet  
**THIRD FLOOR  
FRAMING PLAN**

Project Title

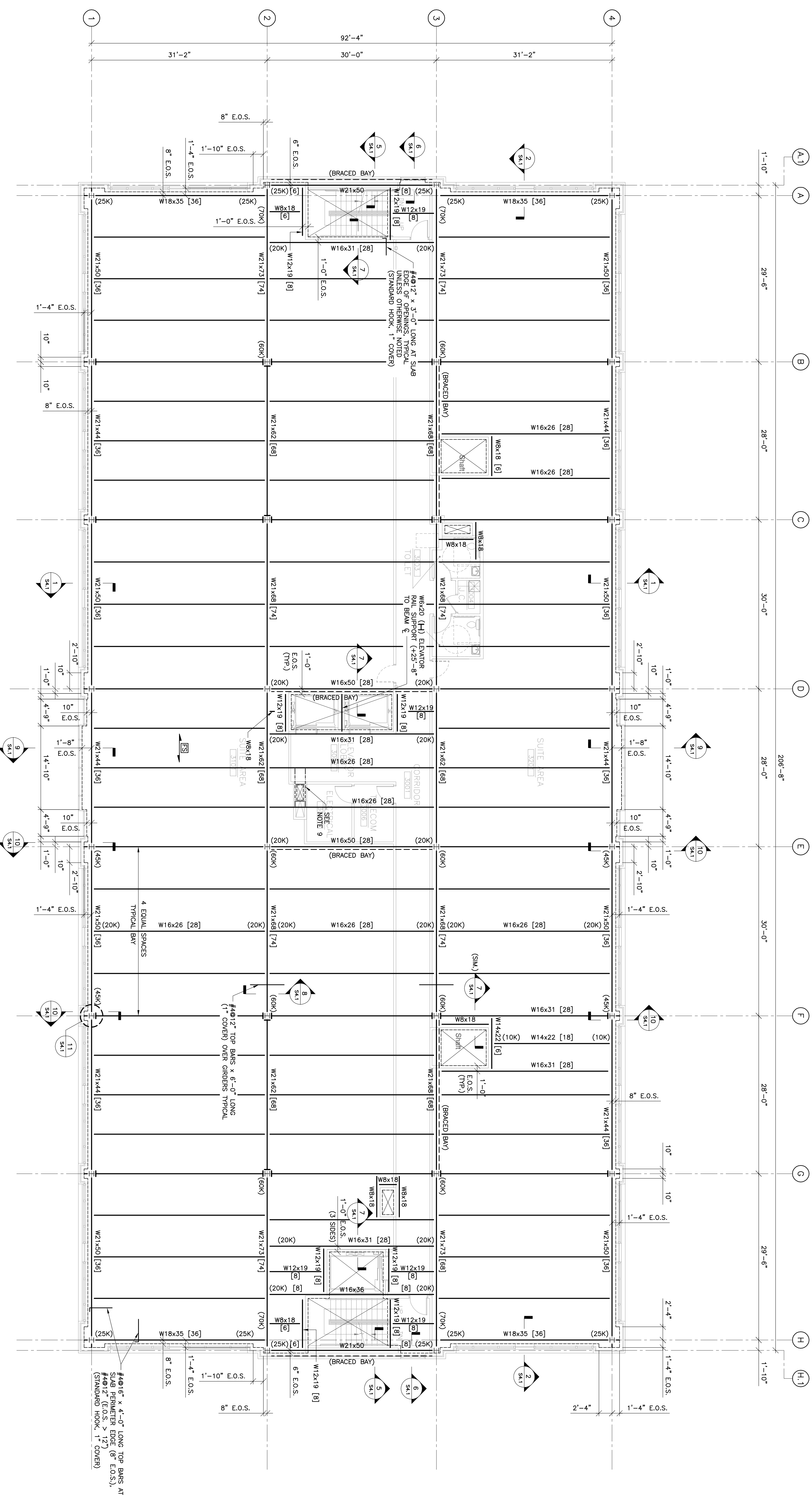
Landmark Healthcare  
Facilities LLC  
Fore River Medical  
Pavilion  
Portland, Maine

Date  
NOVEMBER 20, 2006

Project Number  
FO6-5103

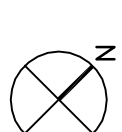
Drawing Number

**S1.3**



**THIRD FLOOR FRAMING PLAN**

SCALE 1/8"=1'-0"



- NOTES**
1. (.....) DESIGN BEAM REACTION (KIPS) TYPICAL FOR BEAMS, GIRDERS ALONG COLUMN LINE UNLESS OTHERWISE NOTED.
  2. ALL BEAMS/GIRDERS TO BE FABRICATED/ERECTED WITH STANDARD MILL CAMBER AT THE TOP.
  3. E.O.S. INDICATES EDGE OF SLAB/DECK (PROVIDE CONTINUOUS 12GA. BENT PLATE CLOSURE/FOURSTOP UNLESS OTHERWISE NOTED IN SECTION).
  4. PROVIDE CONCRETE SHUTOFFS AT ALL COLUMNS AND OPENINGS (USE 12GA. BENT PLATE UNLESS OTHERWISE NOTED IN SECTION).
  5. [ ] INDICATES NUMBER OF 3/4" DIAMETER x 4" STUDS PER BEAM EQUALLY SPACED FOR ENTIRE SPAN (MINIMUM SPACING: 45").
  6. [ ] INDICATES TYPICAL FLOOR CONSTRUCTION:  
 3/4" LIGHT WEIGHT CONCRETE OVER 2" DEEP 20GA. GALVANIZED STEEL COMPRESIVE FLOOR DECK (25% TOTAL THICKNESS)  
 W/STUD SUPPORT PER BEAMS AND SPECIFICATION (3) STRIP (MINIMUM), PROVIDE 5/8" x 2 1/2" x 1/2" W/MS (3/4" SHIELD) LOCATED  
 3/4" FROM TOP OF SLAB.
  7. FINISH SLAB ELEVATION +26'-4" ABOVE FIRST FLOOR.
  8. TOP OF STEEL ELEVATION +25'-10 1/2" ABOVE FIRST FLOOR UNLESS OTHERWISE NOTED.
  9. PROVIDE ANGLE FRAME AROUND DUCT OPENINGS - REFER TO TYPICAL DETAIL (SLAB/DECK TO BE CUT IN FUTURE).
  10. [ ] INDICATES BEAM TO COLUMN CONNECTION FOR DIAPHRAGM DISTRIBUTION (REFER TO SECTION 6/S210).