

Francis

Caufman

Foley

Hoffmann

Francis, Cauffman, Foley, Hoffmann
Architects Ltd. 2120 Arch Street
Philadelphia, PA 19103
215-588-8250

STRUCTURAL ENGINEER
ROBERT EDWARD CHESTER ASSOCIATES,
118 COLTIER AVENUE
ARLINGTON, PA 19003
P (610) 545-9570
F (610) 545-9572

M/P ENGINEERS, LLP
1500 WALNUT STREET, SUITE 1400
PHILADELPHIA, PA 19102
P 215-282-2154
F 215-755-5708

REVISIONS
11-20-06 CONSTRUCTION DOCUMENTS ISSUED

Sheet
**SECOND FLOOR
FRAMING PLAN**

Project Title

Landmark Healthcare
Facilities LLC

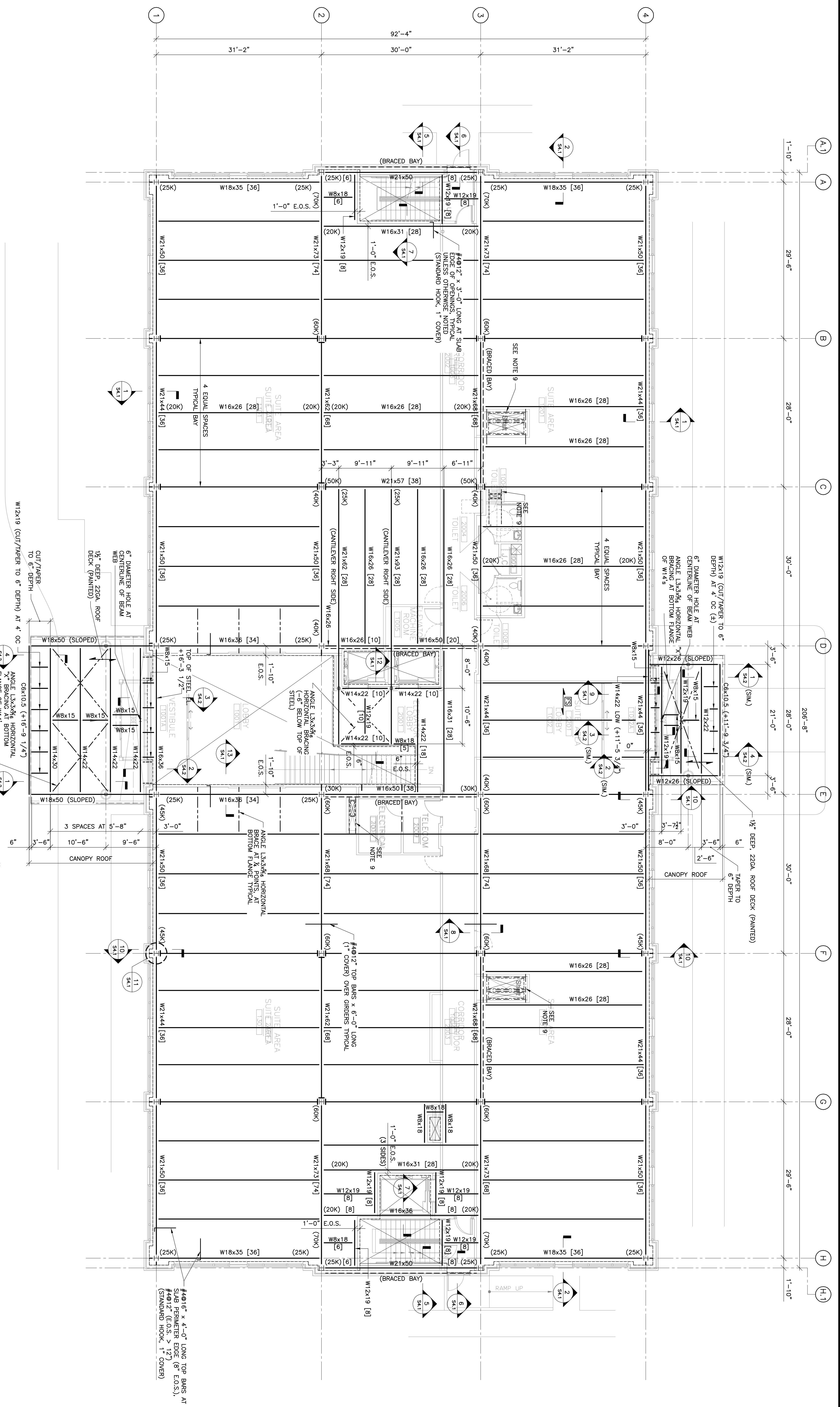
Fore River Medical
Pavilion
Portland, Maine

Date
NOVEMBER 20, 2006

Project Number
F06-5103

Drawing Number

S1.2



SECOND FLOOR FRAMING PLAN
SCALE 1/8"=1'-0"

- NOTES**
1. (.....) DESIGN BEAM REACTION (RFS) TYPICAL FOR BEAMS, GIRDERS ALONG COLUMN LINE UNLESS OTHERWISE NOTED.
 2. ALL BEAMS/GIRDERS TO BE FABRICATED/ERECTED WITH STANDARD MILL CAMBER AT THE TOP.
 3. E.O.S. INDICATES EDGE OF SLAB/DECK (PROVIDE CONTINUOUS 12GA. BENT PLATE CLOSURE/POSTTOP UNLESS OTHERWISE NOTED IN SECTION).
 4. PROVIDE CONCRETE SHUTOFFS AT ALL COLUMNS AND OPENINGS (USE 12GA. BENT PLATE UNLESS OTHERWISE NOTED IN SECTION).
 5. [] INDICATES NUMBER OF 3/4" DIAMETER x 4" STUDS PER BEAM EQUALLY SPACED FOR ENTIRE SPAN (MINIMUM SPACING: 48").
 6. [] INDICATES TYPICAL FLOOR CONSTRUCTION:
5" LIGHT WEIGHT CONCRETE OVER 2" DEEP 20GA. GALVANIZED STEEL COMPOSITE FLOOR DECK (5/8" TOTAL THICKNESS)
WUDED 2" SLOPED 5/8" STAIRS AND SPECIFICATION (3" STRIP MINIMUM), PROVIDE 5/8" x 1/2" x 1/4" W/1/2" (5/8" STRIP) LOCATED
3/4" FROM TOP OF SLAB.
 7. FINISH SLAB ELEVATION +14'-0" ABOVE FIRST FLOOR.
 8. TOP OF STEEL ELEVATION +13'-0" ABOVE FIRST FLOOR UNLESS OTHERWISE NOTED.
 9. PROVIDE ANGLE FRAME AROUND DUCT OPENINGS - REFER TO TYPICAL DETAIL (SLAB/DECK TO BE CUT IN FUTURE).
 10. [] INDICATES BEAM TO COLUMN CONNECTION FOR DIAPHRAGM DISTRIBUTION (REFER TO SECTION 6/S210).