

**Francis**

**Cauffman**

**Foley**

**Hoffmann**

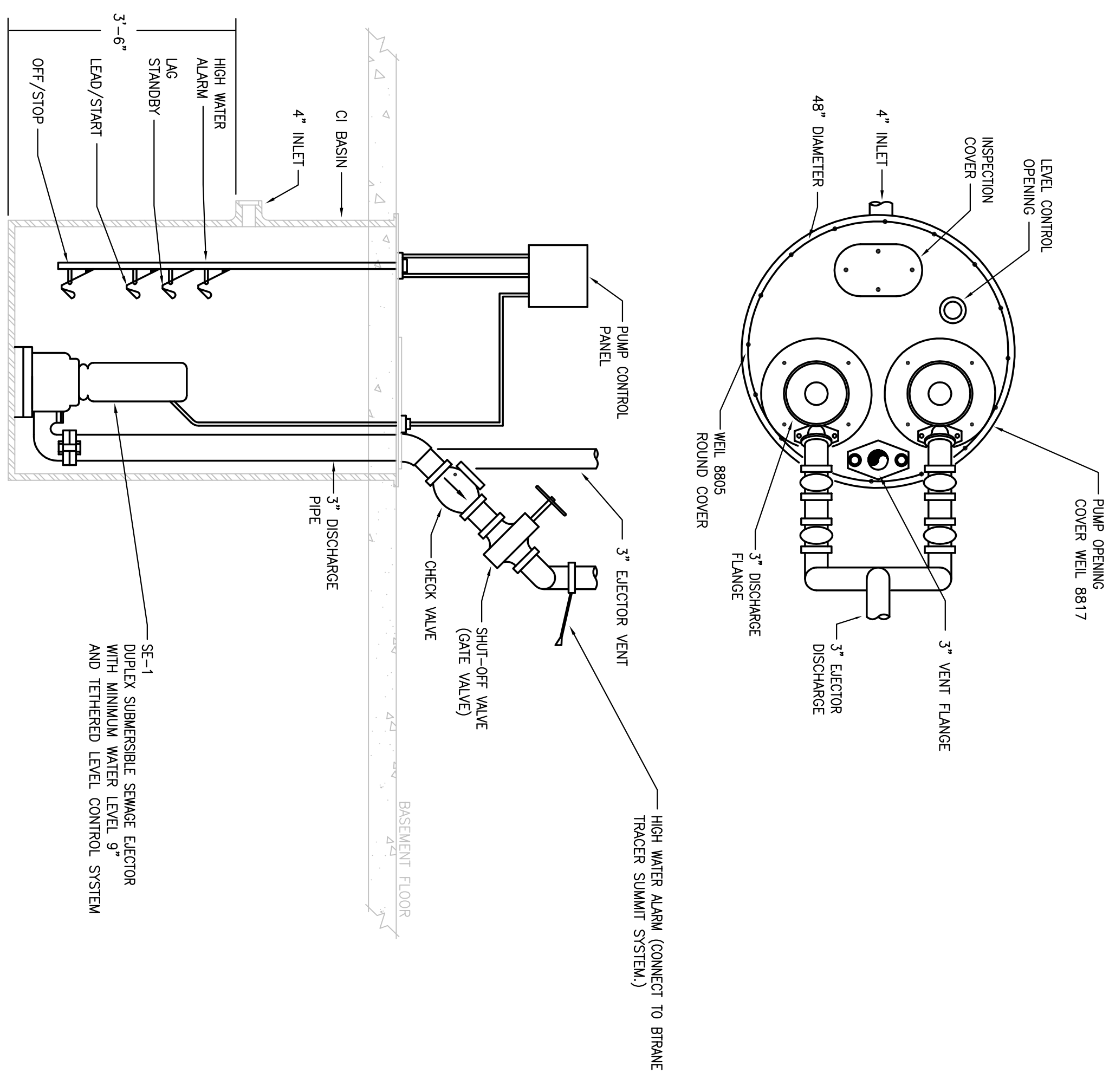
Francis Cauffman  
 Foley Hoffmann  
 Architects Ltd. 2120 Arch Street  
 Philadelphia, PA 19103  
 215-568-8250

STRUCTURAL ENGINEER  
 ROBERT EDWARD CHESTER ASSOCIATES,  
 119 COLTIER AVENUE  
 ARMONK, PA 19003  
 P (610) 445-9570  
 F (610) 445-9572  
 W/E/P ENGINEER

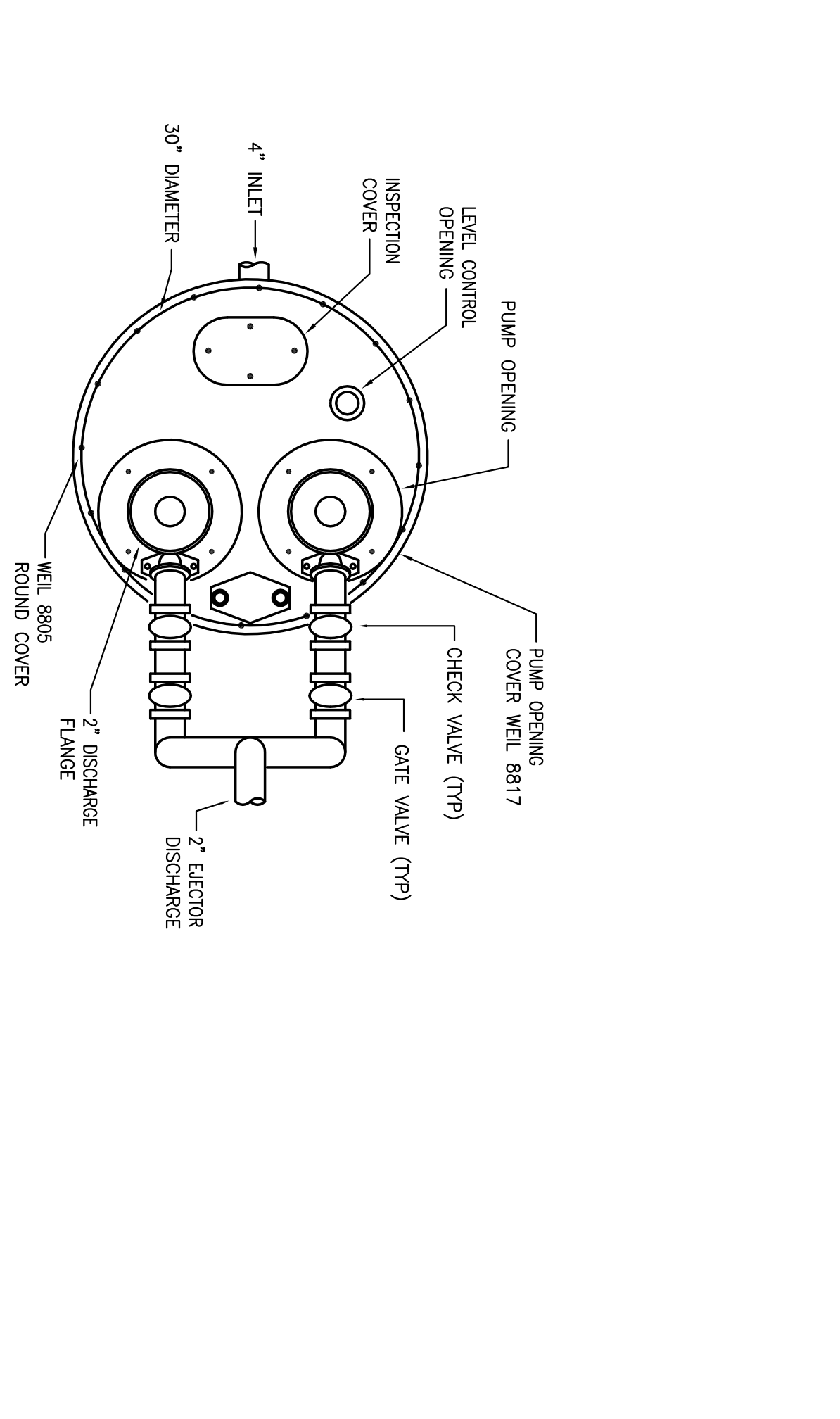
**AKF**

*e n r i e r s*  
 150 WALNUT STREET, SUITE 1400  
 PHILADELPHIA, PA 19102  
 215-752-7870 TEL. 215-576-0600 FAX  
 A/E/ P/O/ NO. 0000008  
 ADMINISTRATION: 215-576-0600  
 MAILING: 215-576-0600

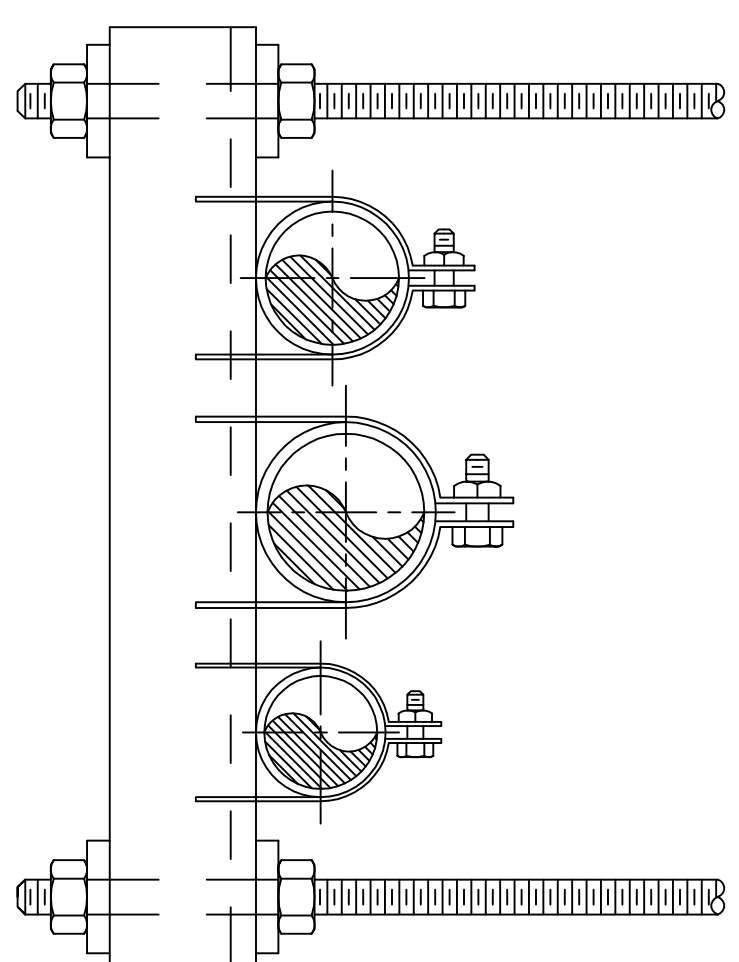
Revision 11-20-06 CONSTRUCTION DOCUMENTS ISSUED



**DUPLEX SEWAGE EJECTOR DETAIL**

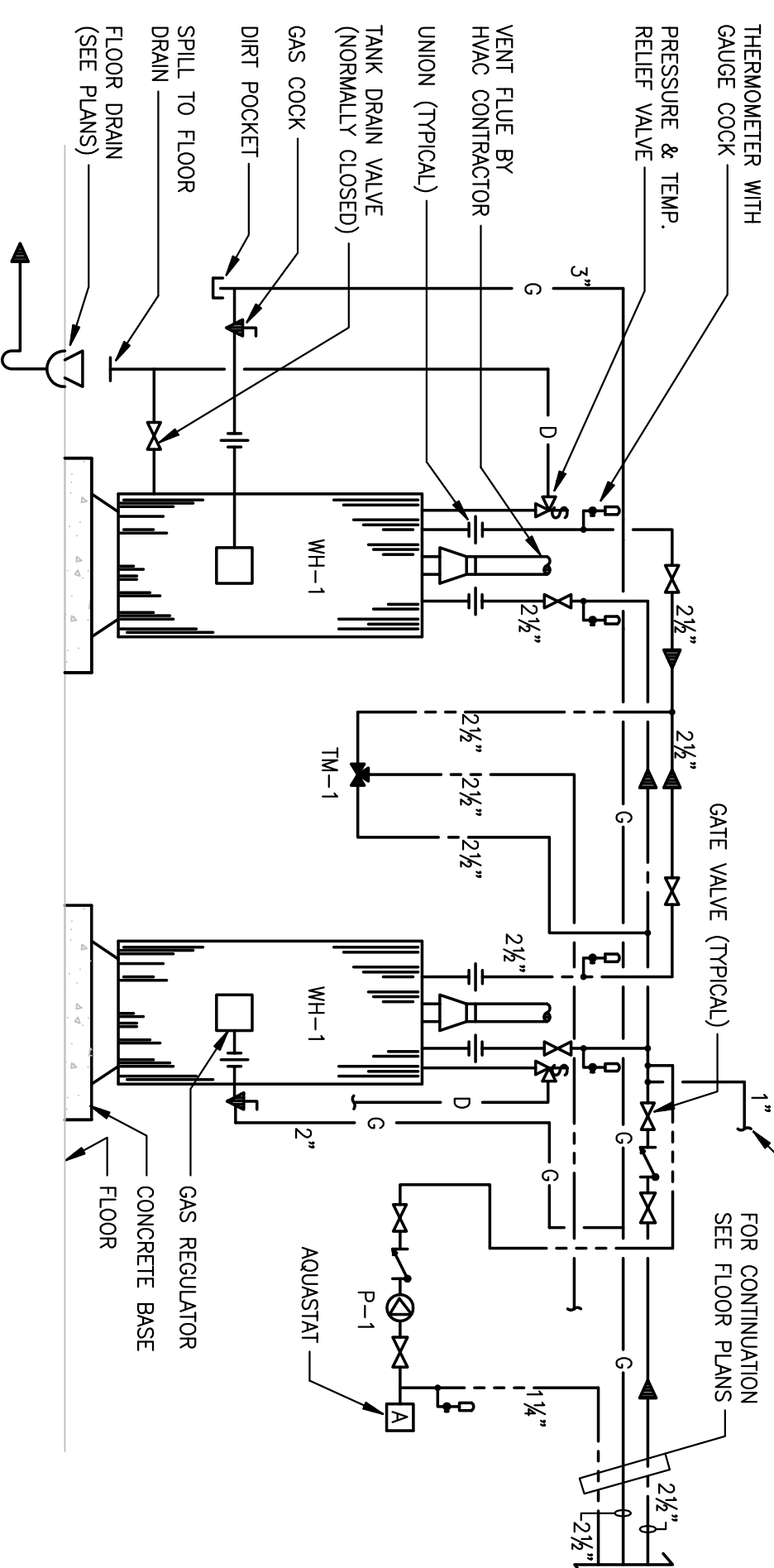


**DUPLEX SUMP PUMP DETAIL**

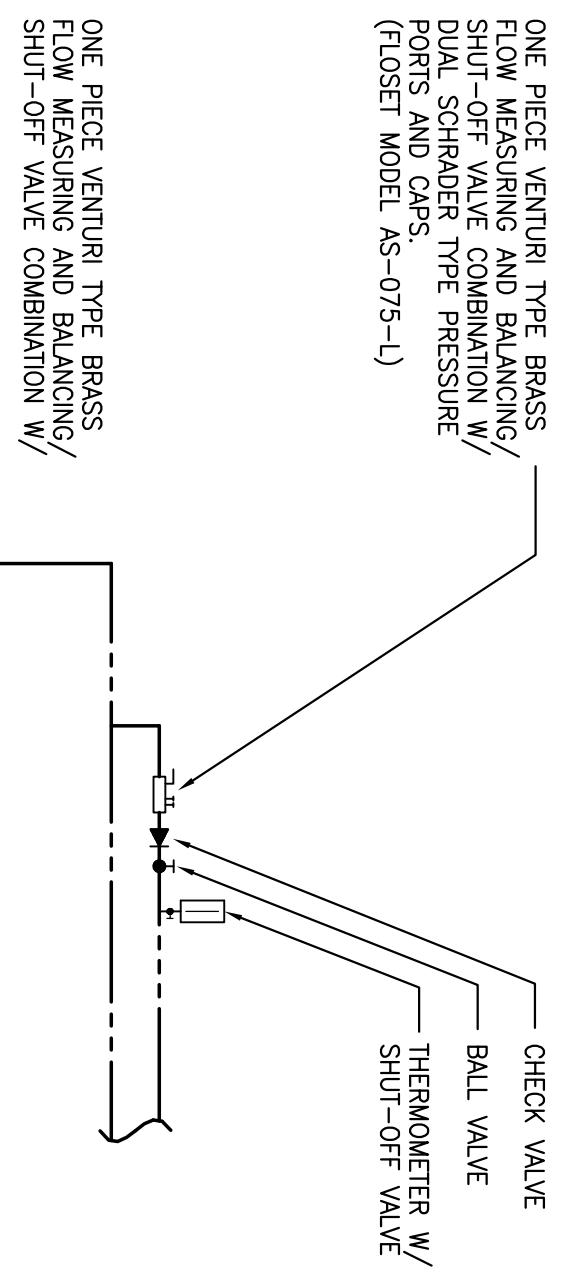


**PIPE HANGER DETAIL**

- NOTES:  
 1. SIZE STRUT AND CLAMP TO ADEQUATELY SUPPORT LOAD.  
 2. PROVIDE STRUT IN DURA-GREEN EPOXY PAINTED.

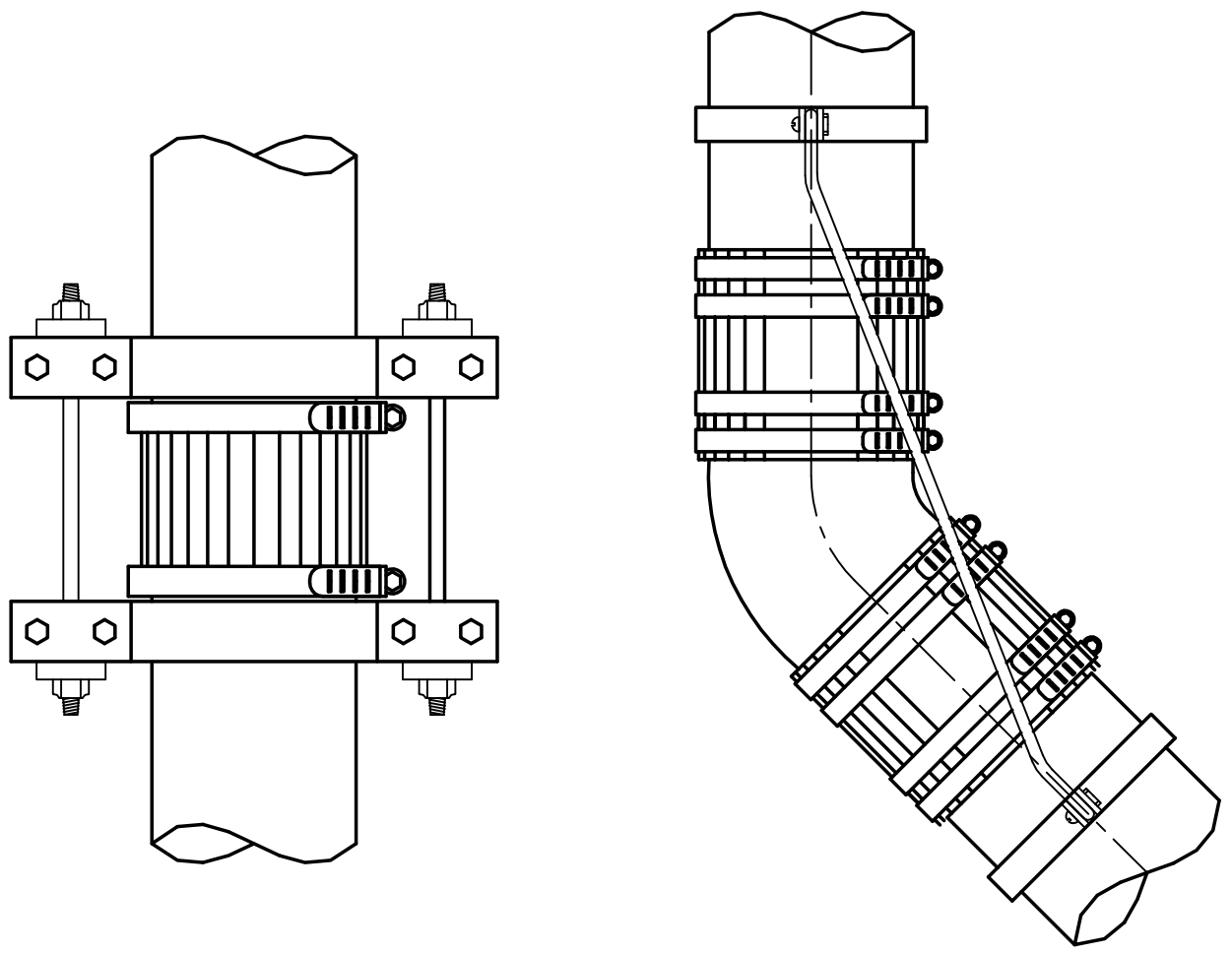


**GAS FIRED DOMESTIC WATER HEATER**



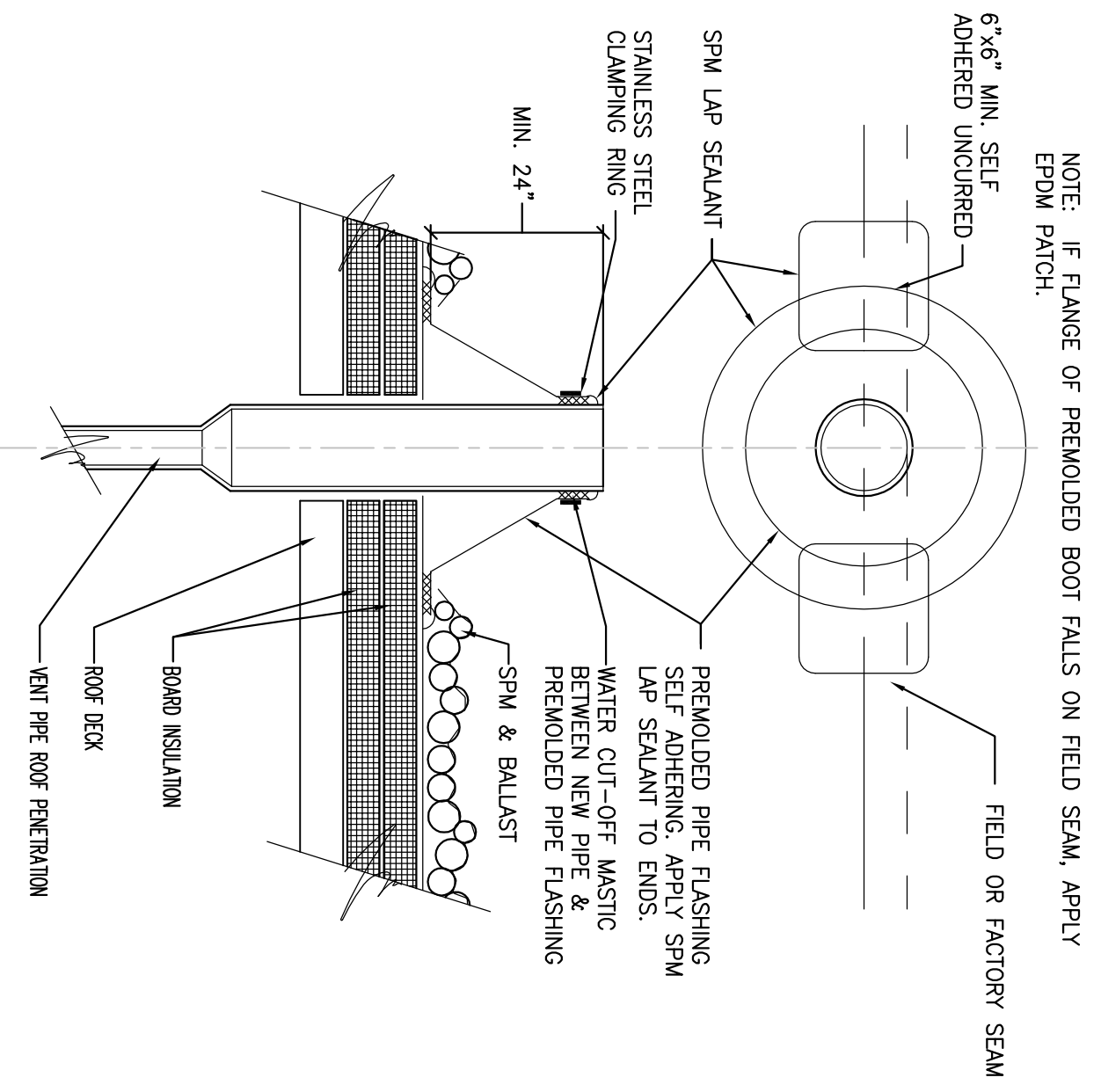
**BALANCING VALVE ASSEMBLY (BVA)**

- NOTES:  
 1. BALANCE VALVE ASSEMBLY (BVA) SHALL BE PROVIDED BY THE MANUFACTURER OF THE BVA.  
 2. ACCESS MUST BE MAINTAINED FOR BVA.  
 3. PROVIDE ONE FLOSET TEST KIT NO. 300.5 PER PROJECT.  
 4. CONTRACTOR SHALL MAINTAIN HW THROUGH EACH HW REGENERATION SYSTEM.



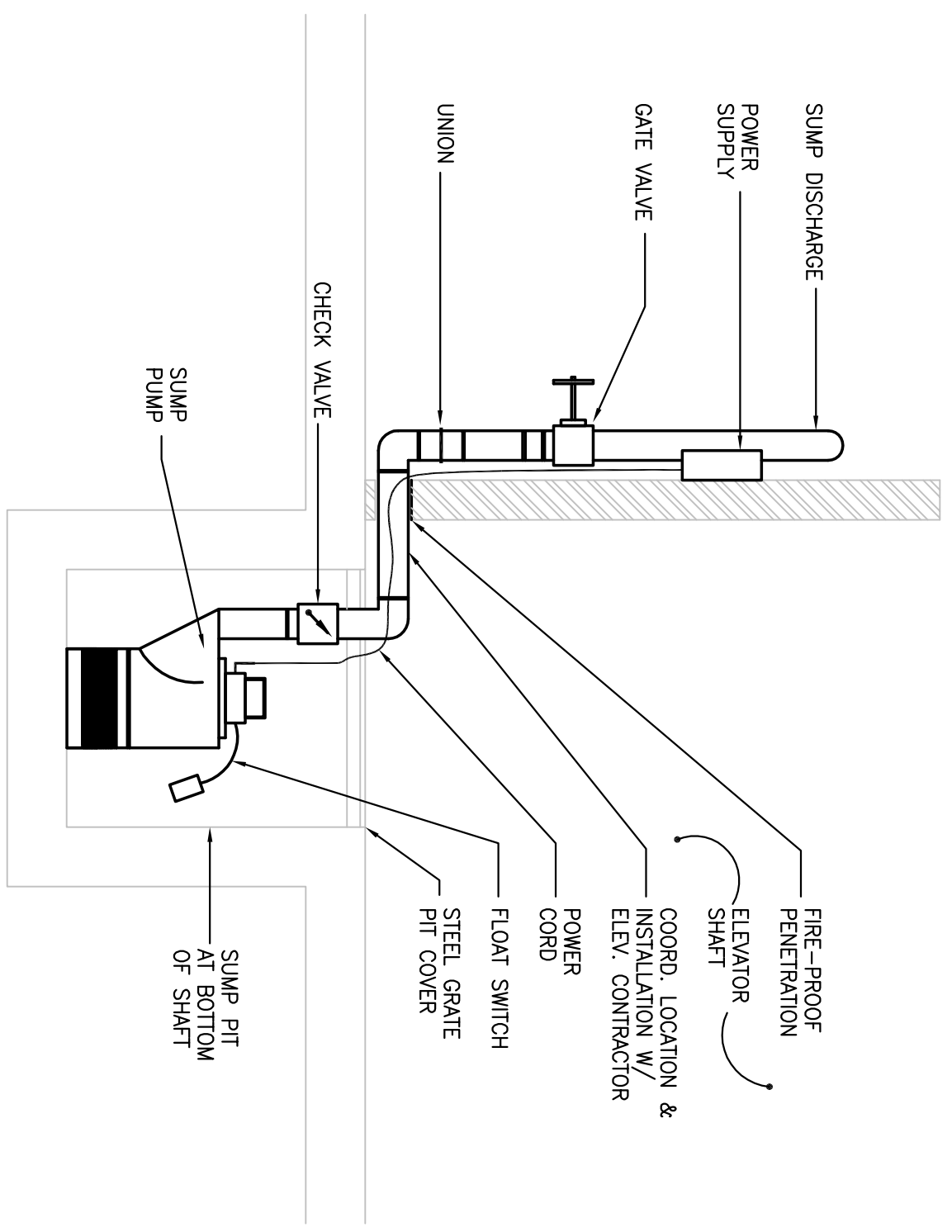
**HORIZONTAL INSTALLATION OF LARGE DIAMETER PIPE**

- NOTE:  
 1. HORIZONTAL PIPE AND FITTINGS FIVE (5) INCHES AND LARGER MUST BE SUPPORTED AT EVERY BRANCH OPENING OR CHANGE OF DIRECTION.



**VENT THRU ROOF**

- NOTE: IF FLANGE OF REMODELED BOOT FALLS ON FIELD SEAM, APPLY EPDM PATCH.  
 6"x6" MIN. SELF ADHERED UNCOURED STAINLESS STEEL CLAMPING RING MIN. 24" REMODELED PIPE FLASHING WATER CUT-OFF MASTIC BETWEEN NEW PIPE & REMODELED PIPE FLASHING SPM & BALLAST SPM UP SEAMANT



**ELEVATOR SUMP PIT DETAIL 1**

Date  
 NOVEMBER 20, 2006

Project Number  
 FO8-5103

Drawing Number  
 P5.01