

Francis

Coffman

Foley

Hoffmann

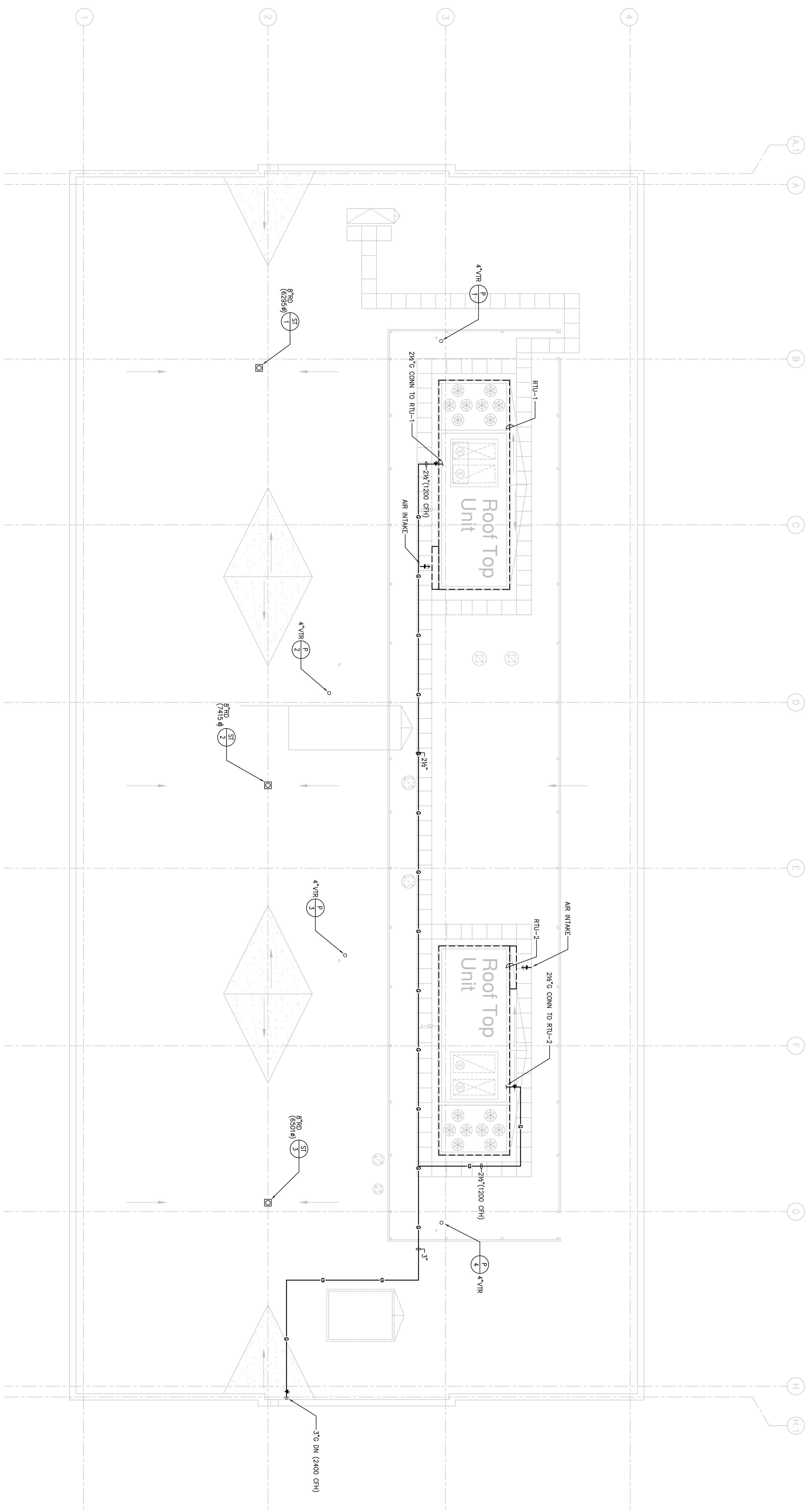
Francis Coffman 2120 Arch Street
Foley Hoffmann Philadelphia, PA 19103
Architects Ltd. 215-566-8250

STRUCTURAL ENGINEER
ROBERT EDWARD CHESTER ASSOCIATES,
119 COLTIER AVENUE
ARLINGTON, PA 19003
P (610) 445-9570
F (610) 445-9572

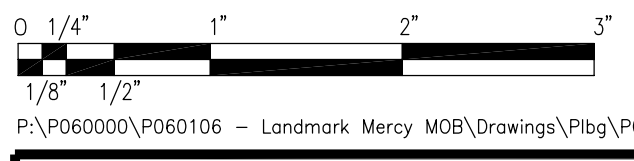
M/E/P ENGINEER
AKF
e n g i n e e r s

180 WALNUT STREET, SUITE 1400
PHILADELPHIA, PA 19106
215-251-7200 TEL. 215-515-0616 FAX
A/E/P/O/NOI/PO/006
ADMINISTRATIVE SERVICES AVAILABLE
INTERNATIONAL SERVICE AVAILABLE

Revisions
11-20-06 CONSTRUCTION DOCUMENTS ISSUED



1 ROOF PLAN
SCALE: 1/8"=1'-0"
1. SCISSER BEAMS ARE AS IDENTIFIED ON ARCHITECTURAL PLANS.



Sheet
PLUMBING
ROOF PLAN

Project Title
**Landmark Healthcare
Facilities LLC**
**Fore River Medical
Pavilion**
Portland, Maine

Date
NOVEMBER 20, 2006

Project Number
FO6-5103

Drawing Number

P2.05