

Francis

Cauffman

Foley

Hoffmann

Francis Cauffman 2120 Arch Street
Foley Hoffmann Philadelphia, PA 19103
Architects Ltd. 215-566-8250

STRUCTURAL ENGINEER
ROBERT EDWARD CHESTER ASSOCIATES,
119 COLTIER AVENUE
ARLINGTON, PA 19003
P (610) 445-9570
F (610) 445-9572

M/E/P ENGINEER
AKF
e n g i n e e r s

188 WALNUT STREET SUITE 1400
PHILADELPHIA, PA 19106
A/E/P/O/D NO. 1000008
ADMINISTRATIVE SERVICES - PHILADELPHIA
TELEPHONE: 215-566-8250

Revisions
11-20-06 CONSTRUCTION DOCUMENTS ISSUED

Sheet

PLUMBING
THIRD FLOOR PLAN

Project Title

Landmark Healthcare
Facilities LLC

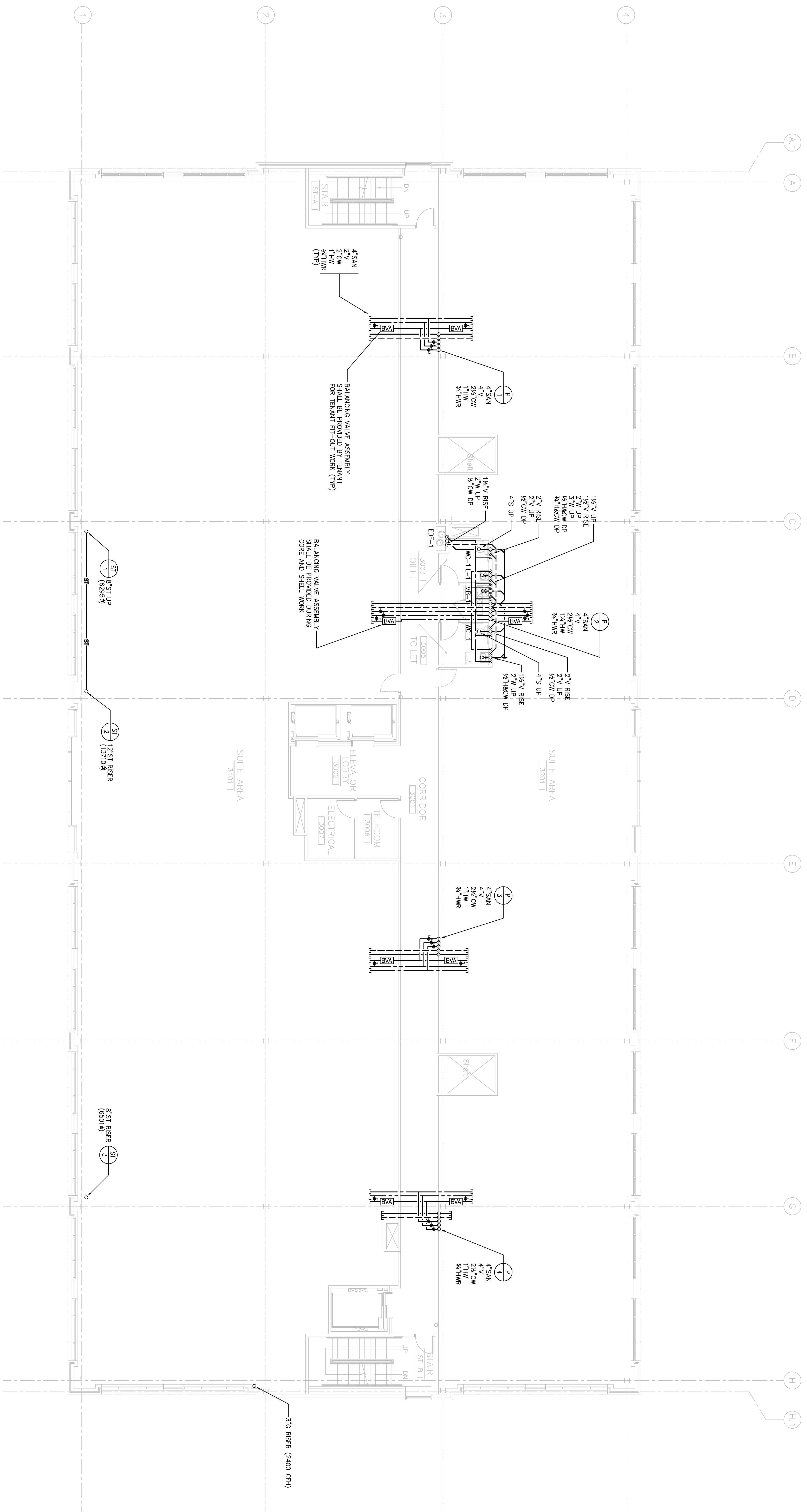
Fore River Medical
Pavilion
Portland, Maine

Date
NOVEMBER 20, 2006

Project Number
FO6-5103

Drawing Number

P2.03



1 THIRD FLOOR PLAN
SCALE: 1/8"=1'-0"

