

**Francis**

**Cauffman**

**Foley**

**Hoffmann**

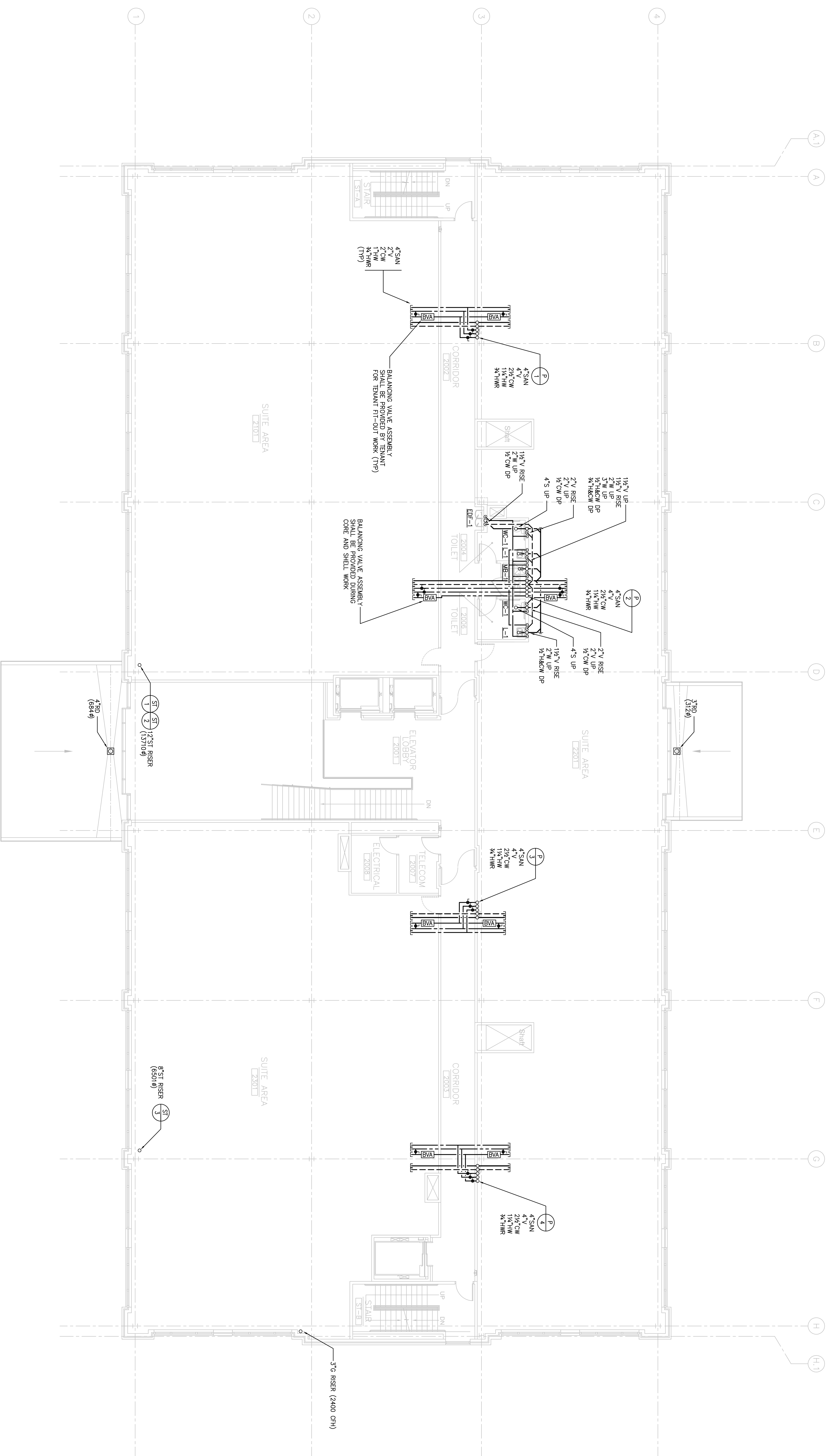
Francis Cauffman  
 Foley Hoffmann  
 Architects Ltd.  
 2120 Arch Street  
 Philadelphia, PA 19103  
 215-568-6250

STRUCTURAL ENGINEER  
 ROBERT EDWARD CHESTER ASSOCIATES,  
 119 COLTIER AVENUE  
 ARMONK, PA 19003  
 P (610) 445-9570  
 F (610) 445-9572

**A K F**  
 e n g i n e e r s

188 WALNUT STREET SUITE 1400  
 PHILADELPHIA, PA 19106  
 A/E/P/O/D NO. 000008  
 ADMIN. SERV. DIV. - 215.576.6700  
 FAX - 215.576.6700

**Revisions**  
 11-20-06 CONSTRUCTION DOCUMENTS ISSUED



**1 SECOND FLOOR PLAN**  
 SCALE: 1/8"=1'-0"

Sheet  
 PLUMBING  
 SECOND FLOOR PLAN

Project Title  
 Landmark Healthcare  
 Facilities LLC  
 Fore River Medical  
 Pavilion  
 Portland, Maine

Date  
 NOVEMBER 20, 2006

Project Number  
 FO8-5103

Drawing Number  
**P2.02**