

Francis

Cauffman

Foley

Hoffmann

Francis Cauffman
 Foley Hoffmann
 Architects Ltd. 2120 Arch Street
 Philadelphia, PA 19103
 215-598-8250

STRUCTURAL ENGINEER
 ROBERT EDWARD CHESTER ASSOCIATES,
 119 COLTIER AVENUE
 ARDENHORSE, PA 19003
 P (610) 445-9570
 F (610) 645-9572
 W/E/P ENGINEER

AKF
e n g i n e e r s
 150 WALNUT STREET SUITE 1400
 PHILADELPHIA, PA 19102
 P (610) 545-5670
 F (610) 545-5672
 ADMINISTRATION: 215-566-1111
 FAX: 215-566-1111

Revisions
 11-20-06 CONSTRUCTION DOCUMENTS ISSUED

Sheet
 PLUMBING
 BASEMENT PLAN

Project Title
**Landmark Healthcare
 Facilities LLC**

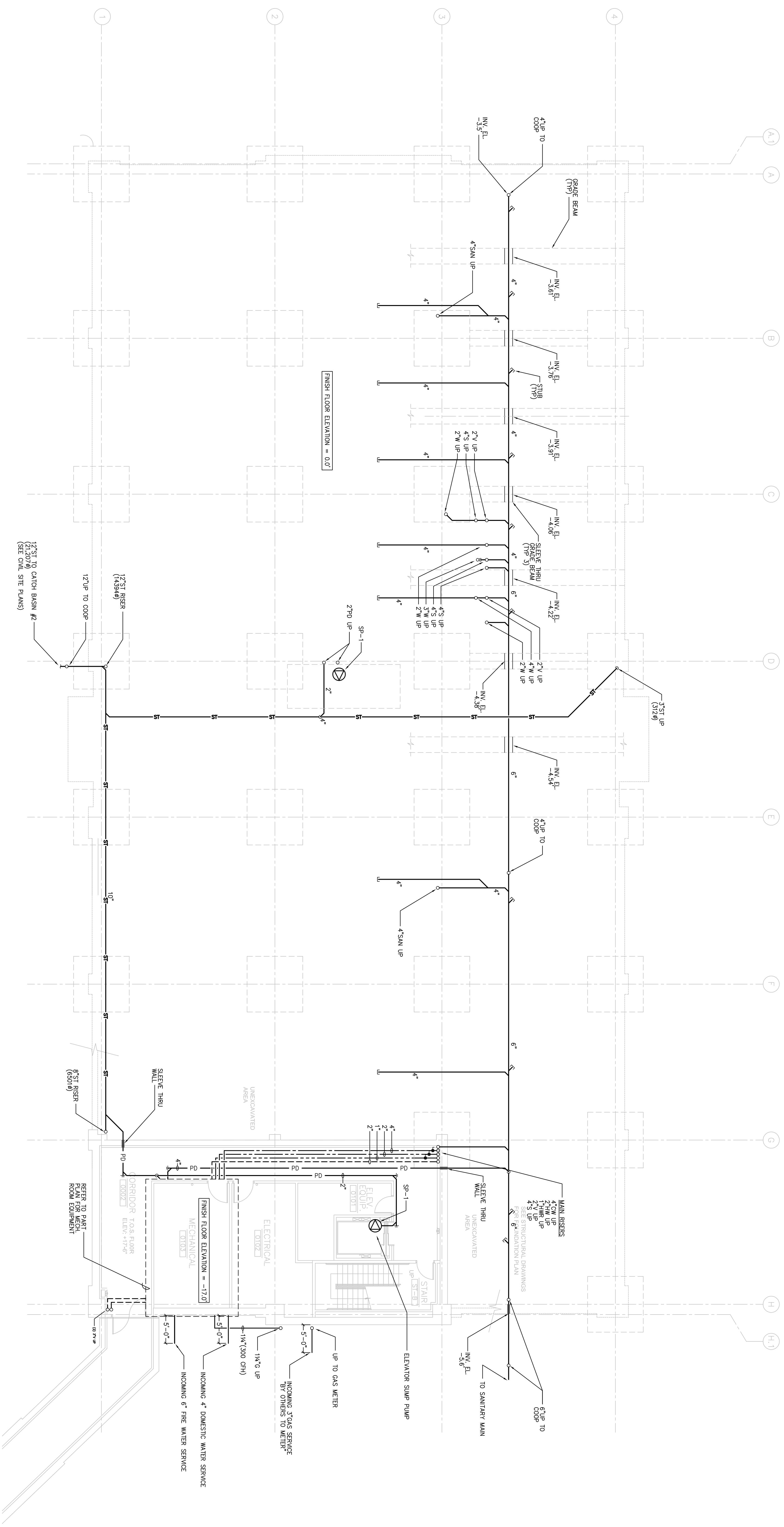
**Fore River Medical
 Pavilion
 Portland, Maine**

Date
 NOVEMBER 20, 2006

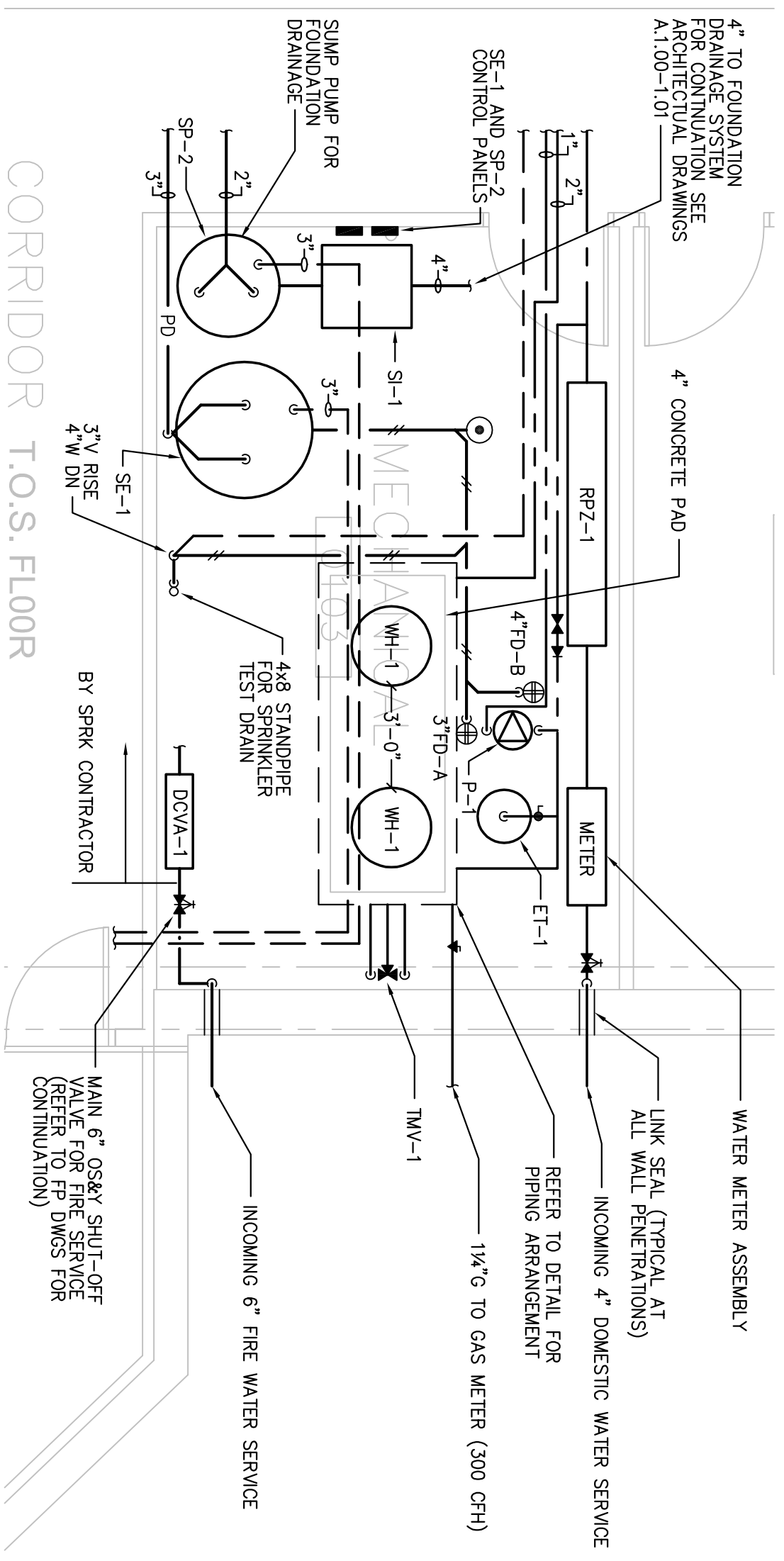
Project Number
 FO6-5103

Drawing Number

P2.00



1 BASEMENT PLAN
 SCALE: 1/8"=1'-0"



1 MECHANICAL ROOM PART PLAN
 SCALE: 1/4"=1'-0"