

Francis

Cauffman

Foley

Hoffmann

Francis Cauffman
Foley Hoffmann
Architects Ltd.
2120 Arch Street
Philadelphia, PA 19103
215-566-8250

STRUCTURAL ENGINEER
ROBERT EDWARD CHESTER ASSOCIATES,
119 COLTIER AVENUE
SUNBURY, PA 18033
P (610) 445-9570
F (610) 445-9572

W/E/P ENGINEER

ARKF

arkf
180 WALNUT STREET, SUITE 1400
PHILADELPHIA, PA 19103
215-251-7267 TEL. 215-516-0646 FAX
215-251-7267
A/E/P/PROJ. NO. P060106
ADMINISTRATIVE SERVICES: 215-251-7267
GENERAL CONTRACTOR: 215-251-7267

Revisions
11-20-06 CONSTRUCTION DOCUMENTS ISSUED

Sheet
HVAC
DETAILS & RISERS

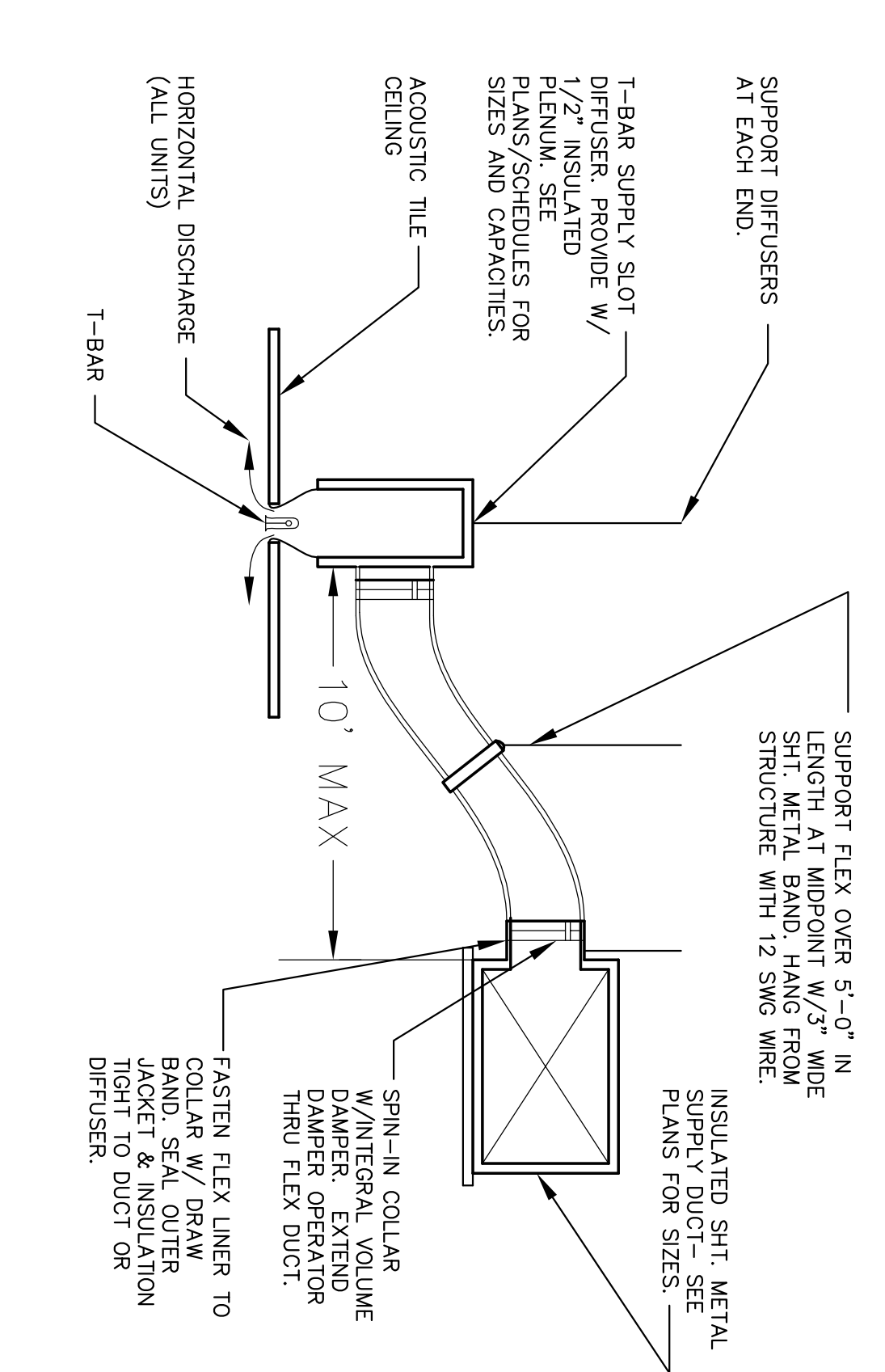
Project Title
**Landmark Healthcare
Facilities LLC
Fore River Medical
Pavilion
Portland, Maine**

Date
NOVEMBER 20, 2006

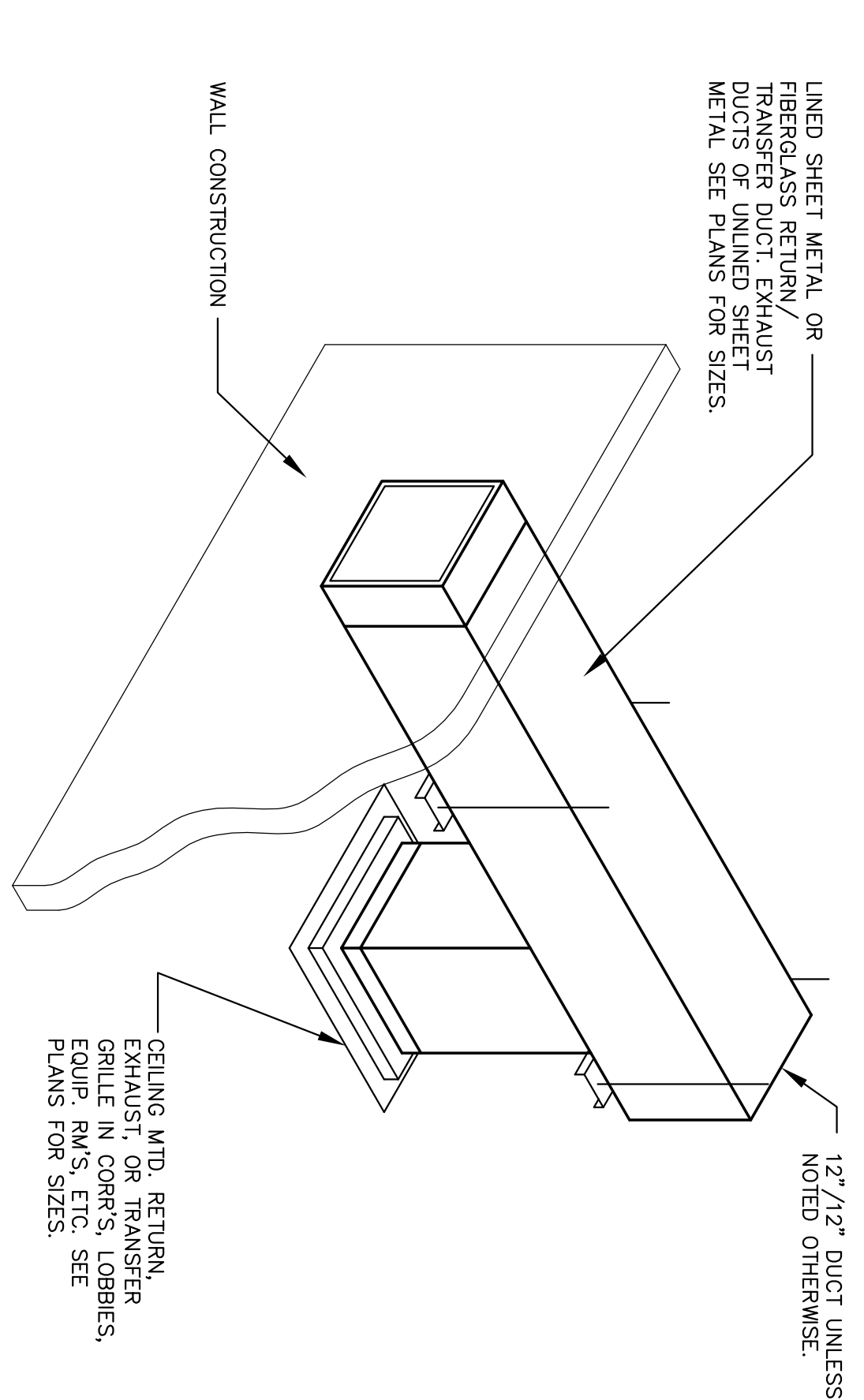
Project Number
FO8-5103

Drawing Number

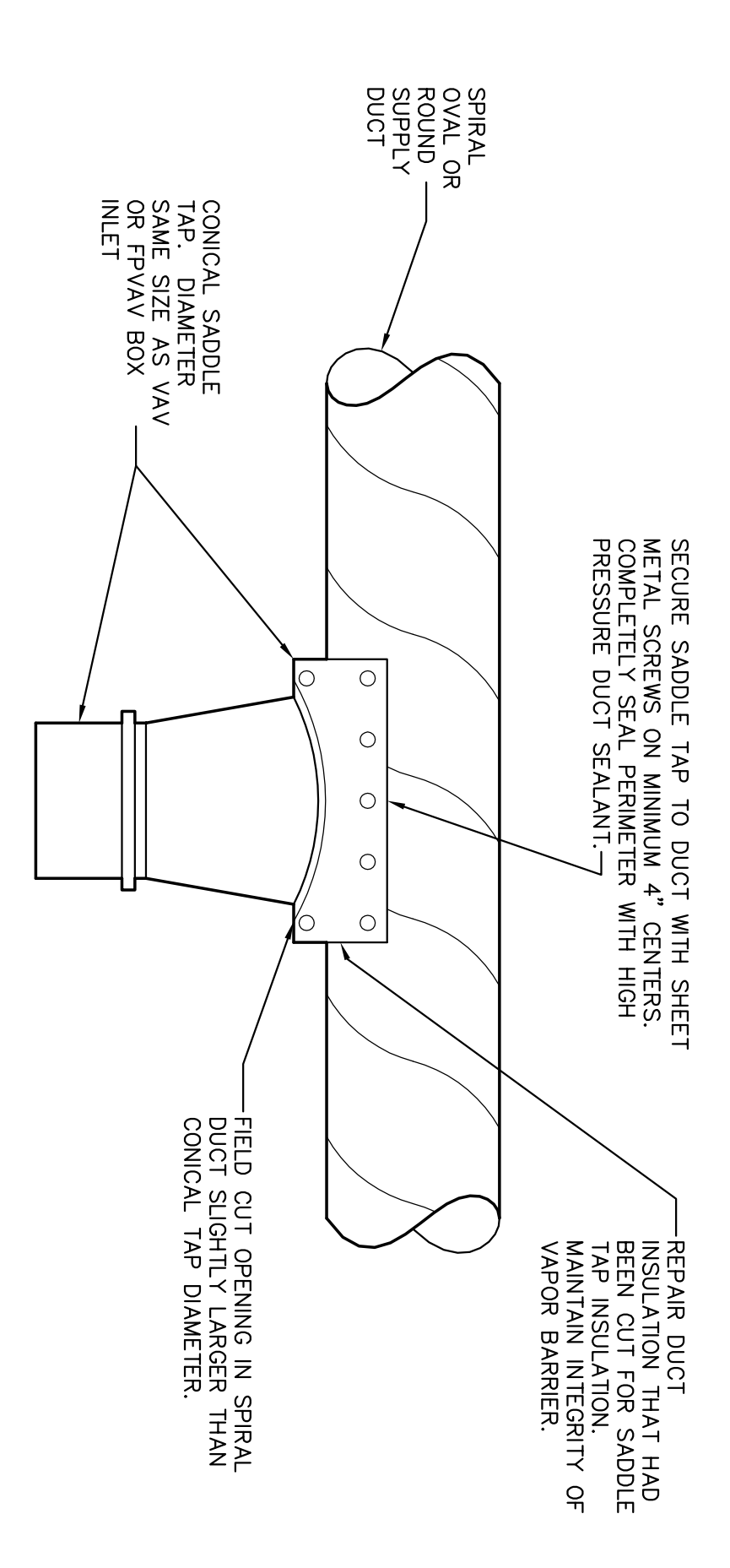
H4.00



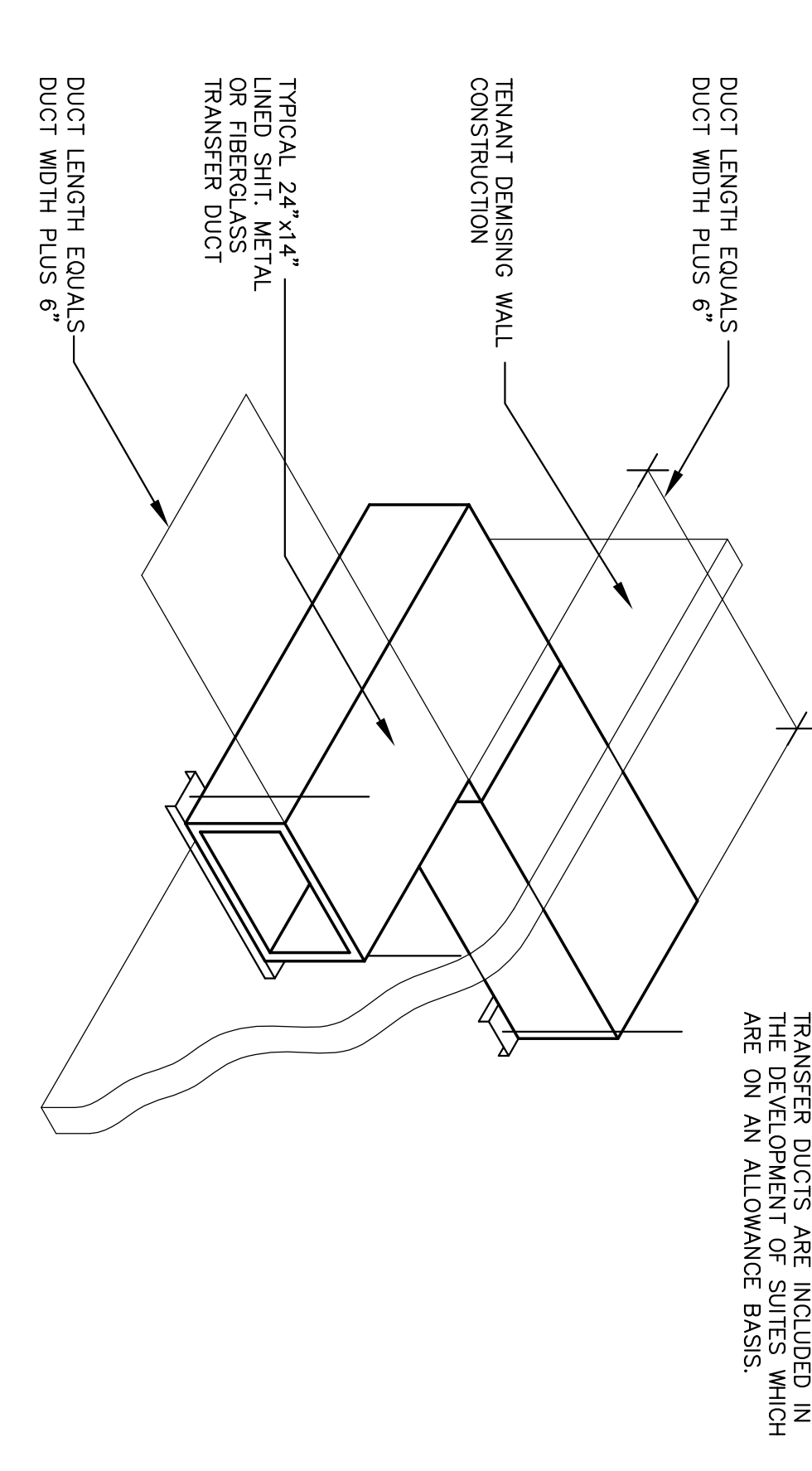
3 SLOT DIFFUSER TO DUCT CONNECTION
N.T.S.



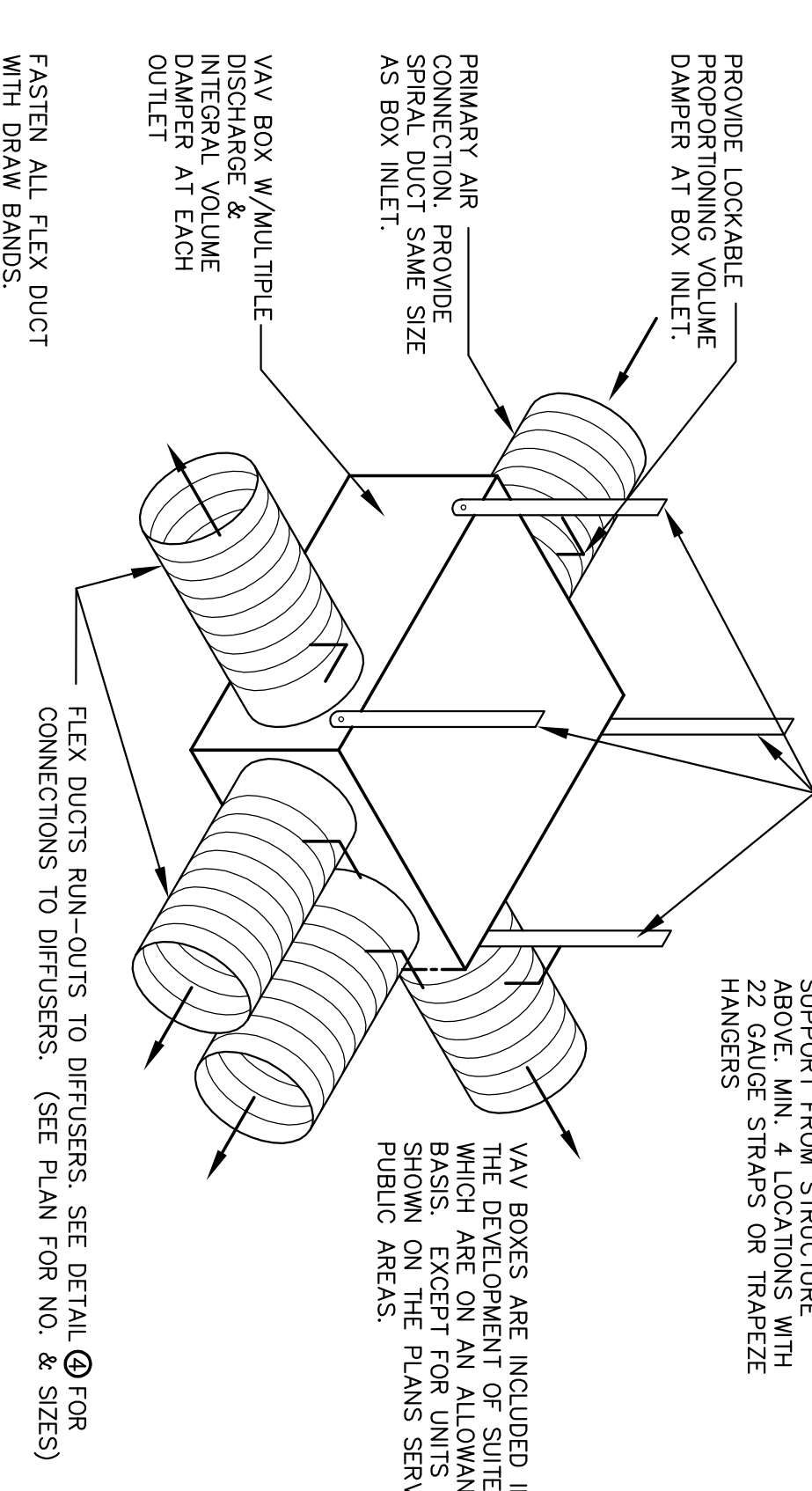
2 RETURN, EXHAUST, OR TRANSFER DUCT W/ GRILLE - PUBLIC AREAS
N.T.S.



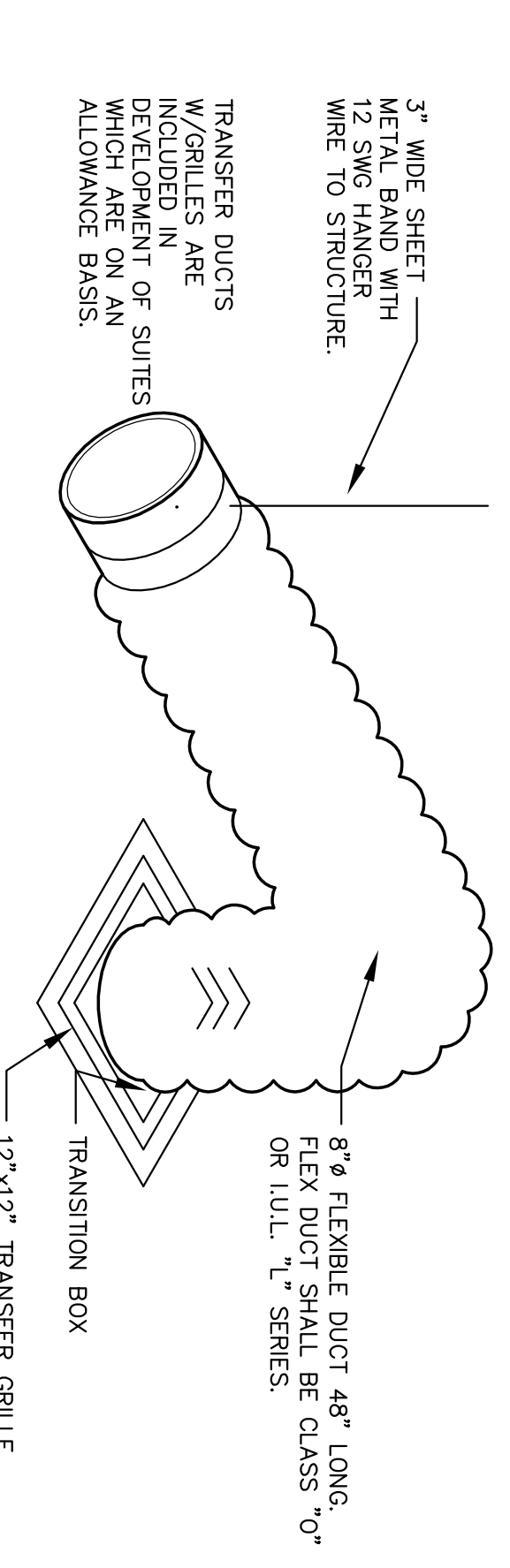
1 CONICAL SADDLE TAP
N.T.S.



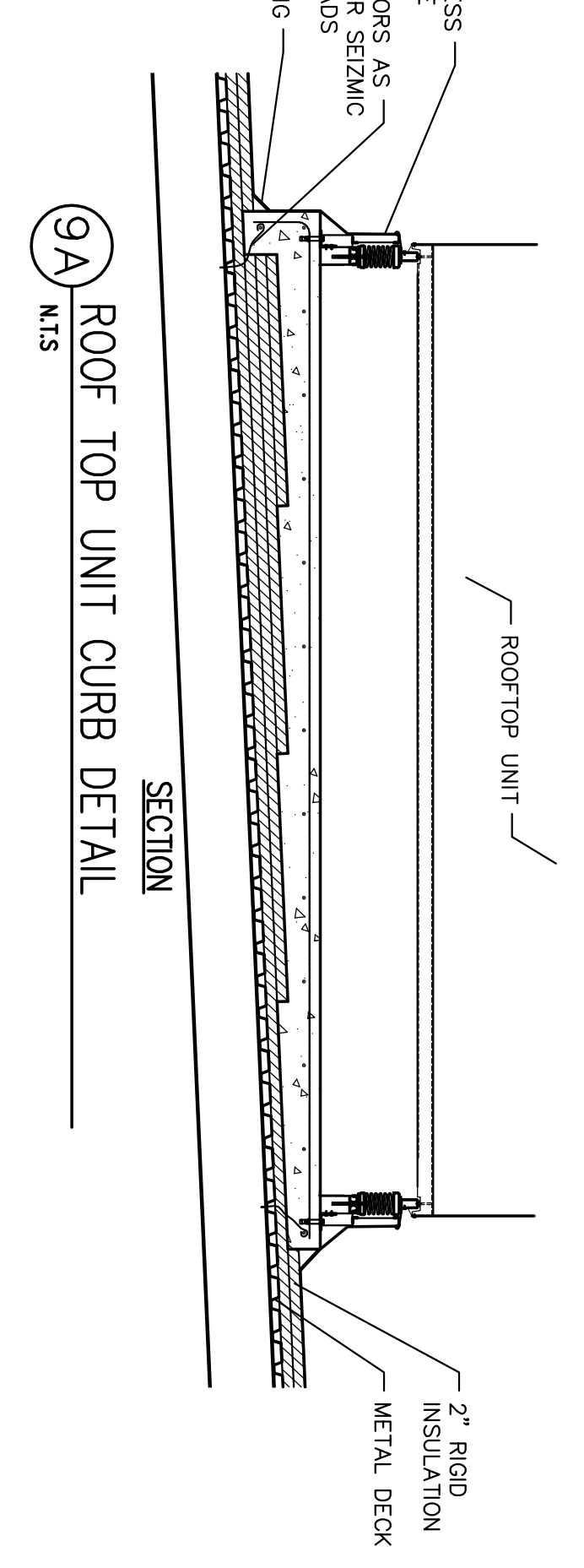
5 TRANSFER DUCT - SUITE AREAS
N.T.S.



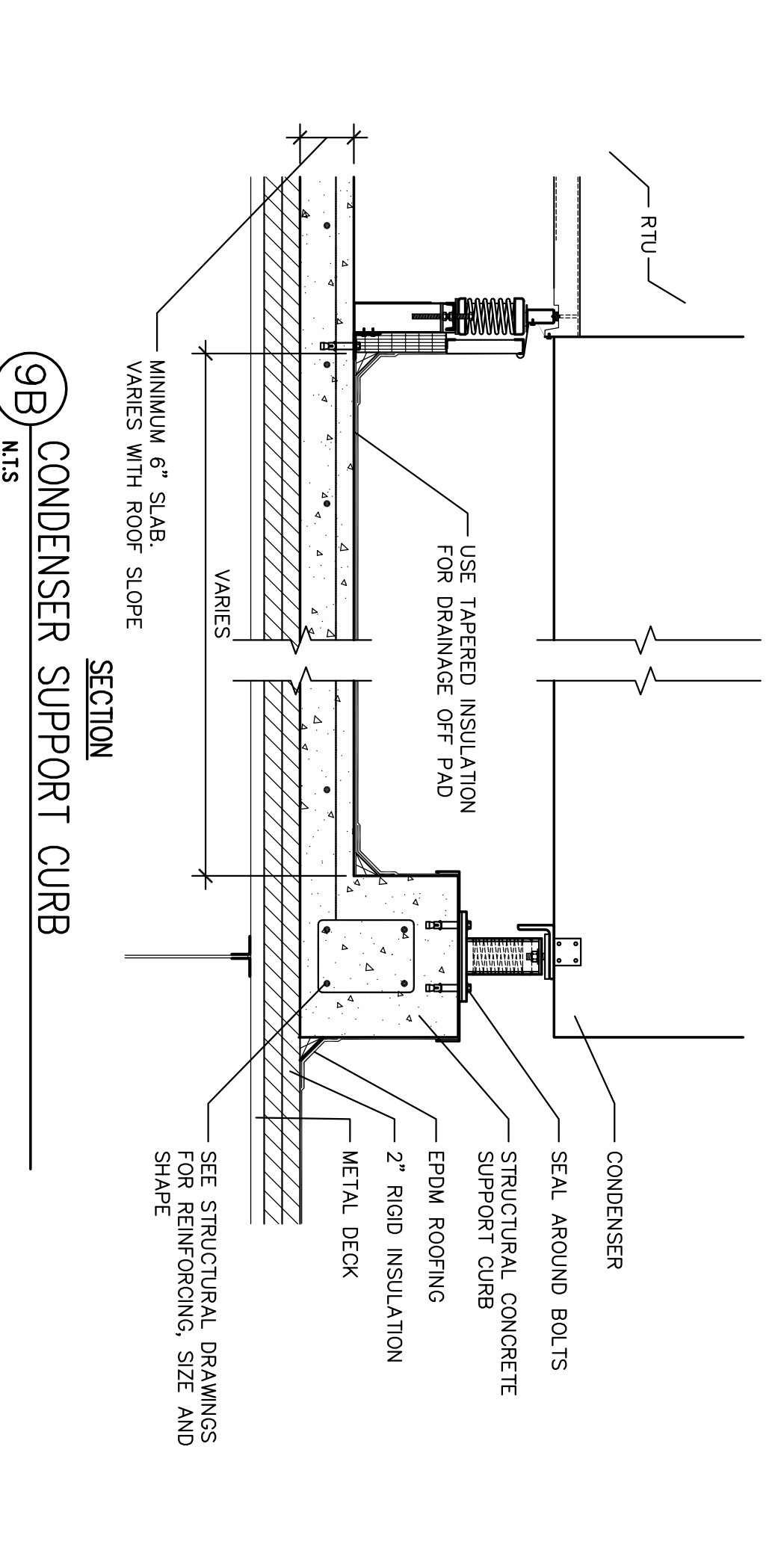
6 TYPICAL VAV BOX
N.T.S.



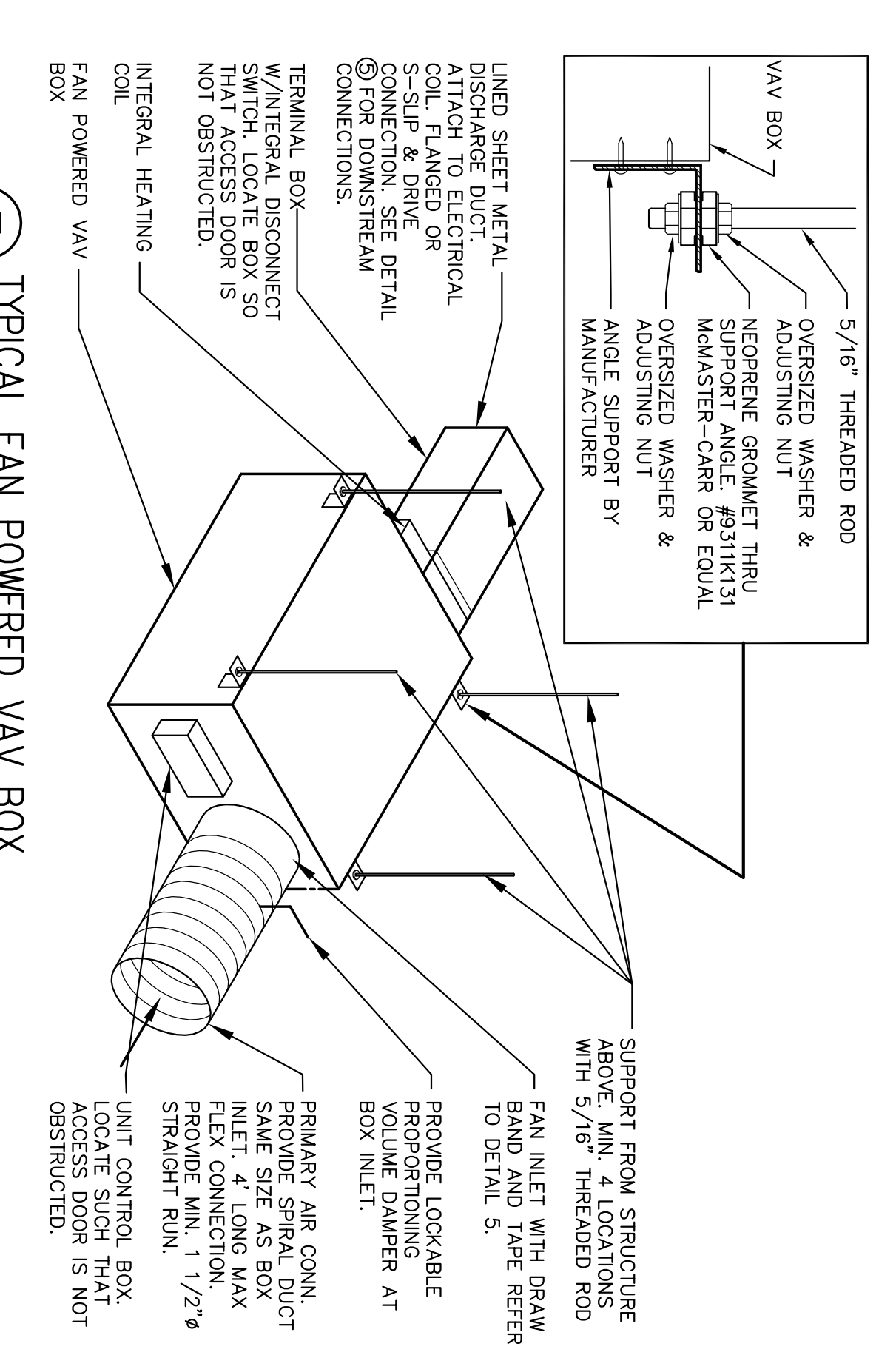
4 RETURN / TRANSFER GRILLE W/ FLEX
N.T.S.



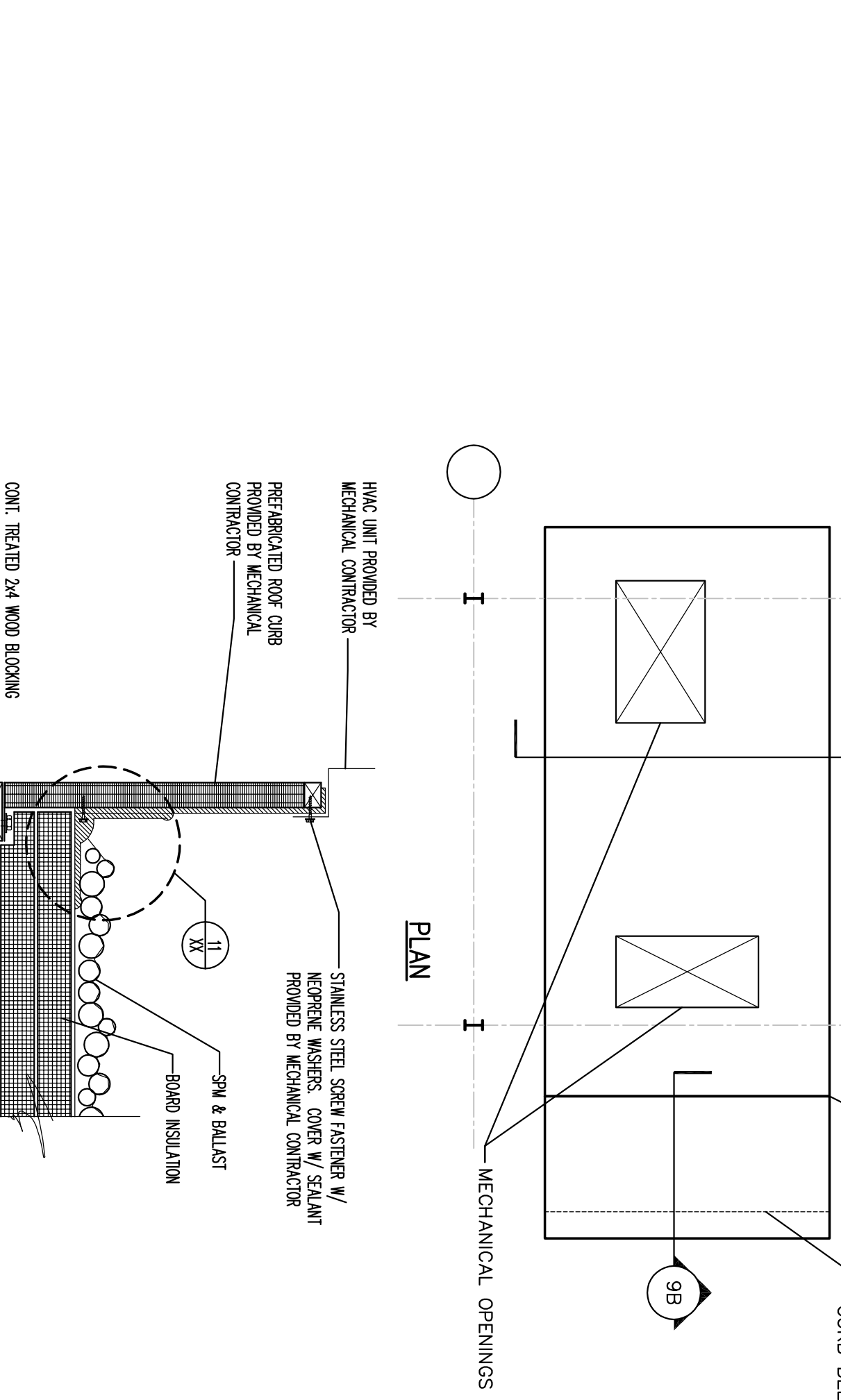
9A ROOF TOP UNIT CURB DETAIL
N.T.S.



9B CONDENSER SUPPORT CURB
N.T.S.



7 TYPICAL FAN POWERED VAV BOX
N.T.S.



8 HVAC UNIT CURB DETAIL
SCALE N.T.S.